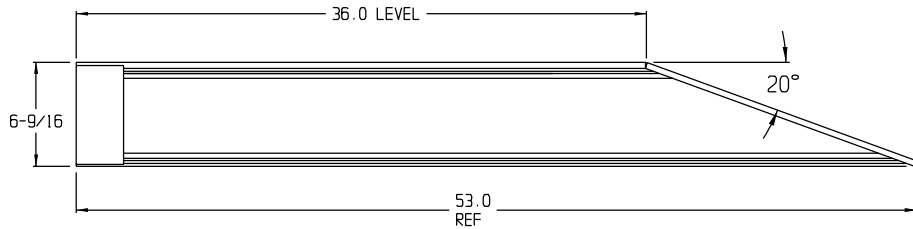


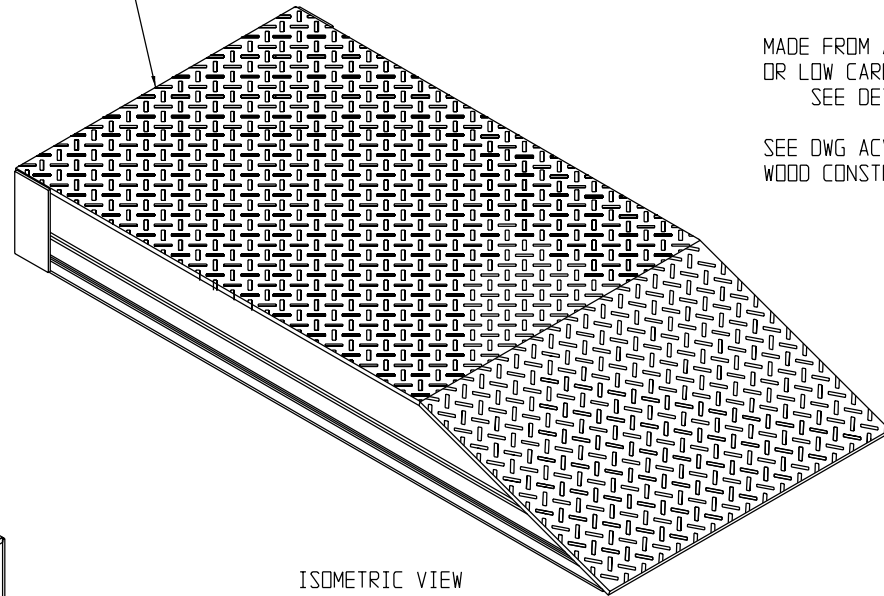
NOTES:

1. THIS RAMP IN A PAIR AS SHOWN ON SKETCH #2 IS SUITABLE FOR USE WITH THE PLS TRUCK UNLOADING OR LOADING CROP IN A FIELD ENVIRONMENT. THE 3 FOOT LEVEL-OFF ALLOWS THE ROLLERS TO BE DROPPED ONTO A SUPPORTING SURFACE OUTSIDE THE CONTAINER DOORS PRIOR TO ROLLING INSIDE. THIS IS ESPECIALLY BENEFITUAL WITH HIGH CROP LOADS THAT NEED TO BE LEVELLED BY PLS TO CLEAR THE DOOR OPENING.
2. THE 20° RAMP IS THE SAME ANGLE USED IN A PREVIOUS STEEL WEDGE DESIGN WHICH WAS PROVEN COULD BE USED TO PUSH A LOADED CROP UP THE WEDGE INTO A CONTAINER USING PLS. THIS PROCEDURE WILL REQUIRE HARSTAND OR AT LEAST PACKED GRAVEL (TO BE TESTED). THE RAMP ALSO PROTECTS THE CROP RUBBER BUMPERS FROM DAMAGE DURING FULL EXTRACTION.
3. THE DESIGN MAY BE FABRICATED FROM STEEL OR ALUMINUM. THE TOP DECK AND RAMP SURFACE SHOULD BE CUT FROM SKID RESISTANT PLATE. THE BOTTOM GROUND SUPPORT PLATE IS 1/4 INCH THICK. FORKLIFT LANDING IS FROM THE OPEN END.
 ESTIMATED WEIGHT OF EACH STEEL RAMP IS: 340 LBS
 ESTIMATED WEIGHT OF EACH ALUMINUM RAMP IS: 140 LBS

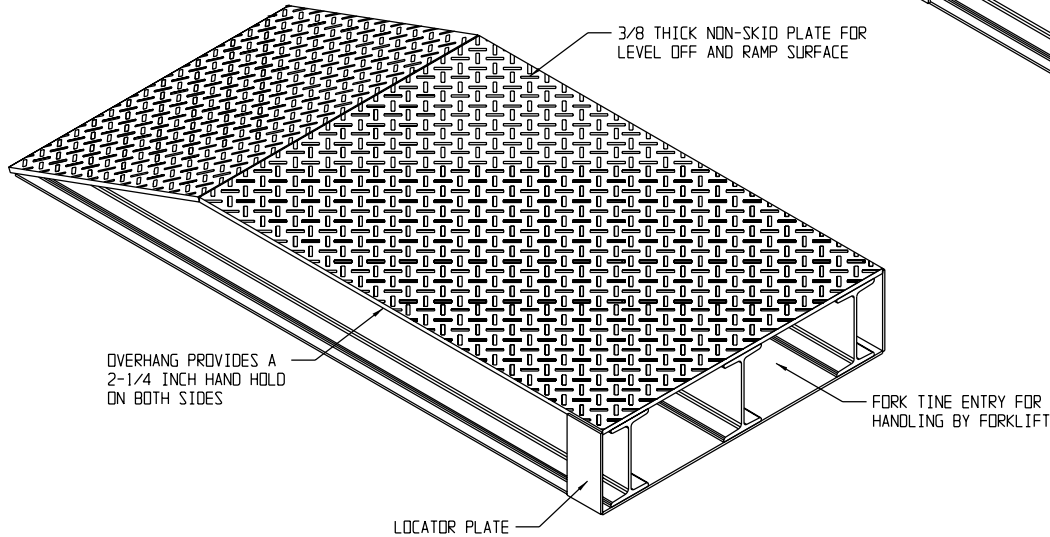
REVISION			
LTR	DESCRIPTION	DATE	APPROVED
-	PRODUCT BASELINE	99-04-16	



REPRESENTS NON-SKID TREAD PLATE (DIAMOND TREAD); USED ON TOP DECK AND RAMP SURFACE



MADE FROM ALUMINUM OR LOW CARBON STEEL
 SEE DETAIL SHEETS
 SEE DWG ACV00628 FOR WOOD CONSTRUCTION



SKETCH #1
 ASSEMBLED VIEW OF RAMP
 PART NO ACV00632-1

DISTRIBUTION STATEMENT A.

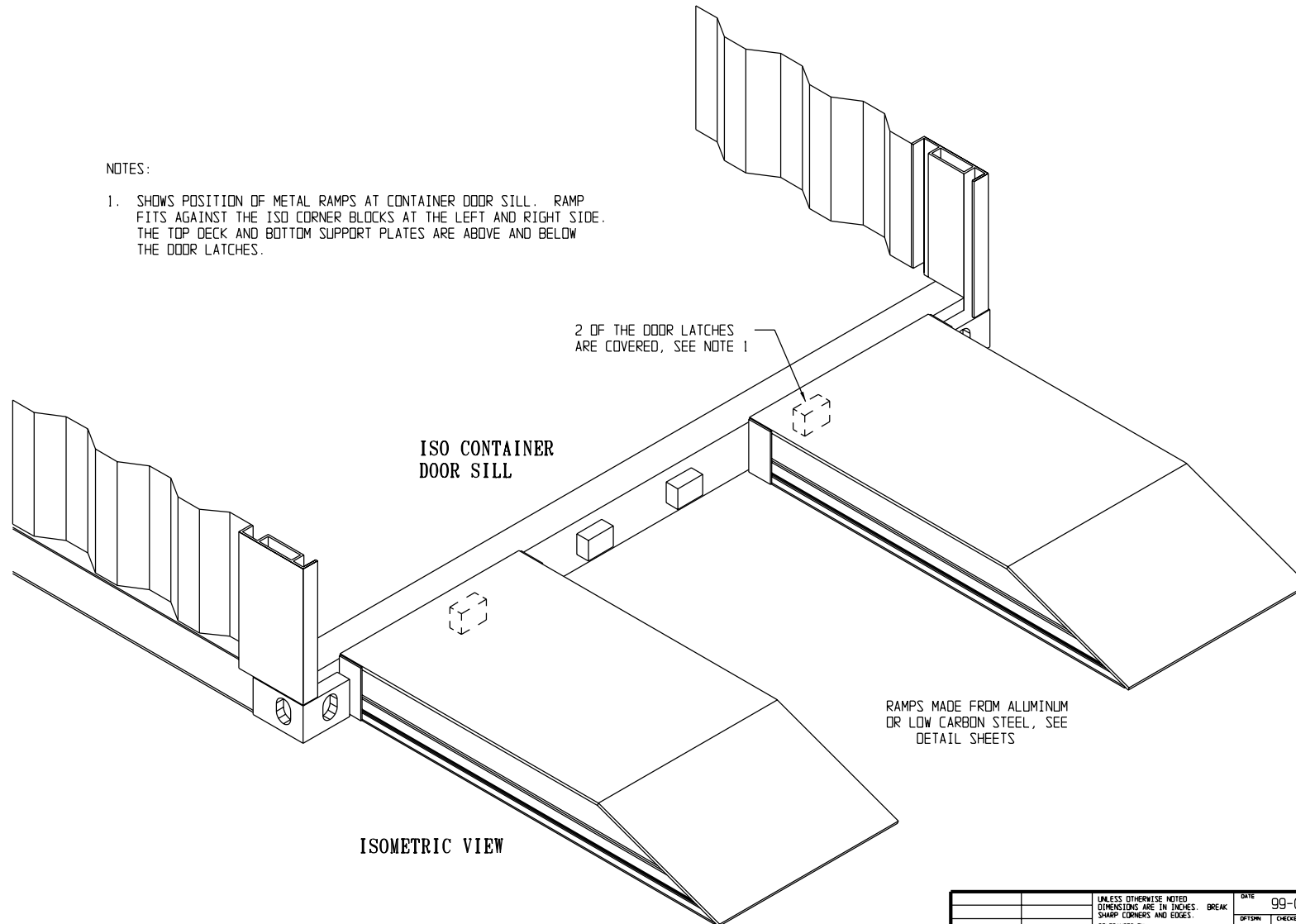
APPROVED FOR PUBLIC RELEASE;
 DISTRIBUTION IS UNLIMITED.

		UNLESS OTHERWISE NOTED DIMENSIONS ARE IN INCHES. BREAK SHARP CORNERS AND EDGES		DATE	99-04-16	DESIGN ACTIVITY	
		TOLERANCES ON FRACTIONS	± 1/16	DESIGNER	JMS	CHECKER	SPRAGUE
		TOLERANCES ON DECIMALS	± .062	DRWING		CHEF, MAINTENANCE ENG DIV	
		TOLERANCES ON ANGLES	± 1°	MATERIAL		CHIEF, LOGISTICS ENGINEERING OFFICE	
		APPROVED BY ORDER OF COMMANDING GENERAL, U.S. ARMY MATERIAL COMMAND (AMC)		APPROVED BY		GENERAL, U.S. ARMY MATERIAL COMMAND (AMC)	
NEXT ASSY	USED ON	APPLICATION		SIZE	D	CAGE CODE	28620
				SCALE	1/4	UNIT WT	
				PART NO		ACV00632	
				SHEET		1 OF 8	

REVISION			
LTR	DESCRIPTION	DATE	APPROVED
-	PRODUCT BASELINE	99-04-16	

NOTES:

1. SHOWS POSITION OF METAL RAMPS AT CONTAINER DOOR SILL. RAMP FITS AGAINST THE ISO CORNER BLOCKS AT THE LEFT AND RIGHT SIDE. THE TOP DECK AND BOTTOM SUPPORT PLATES ARE ABOVE AND BELOW THE DOOR LATCHES.

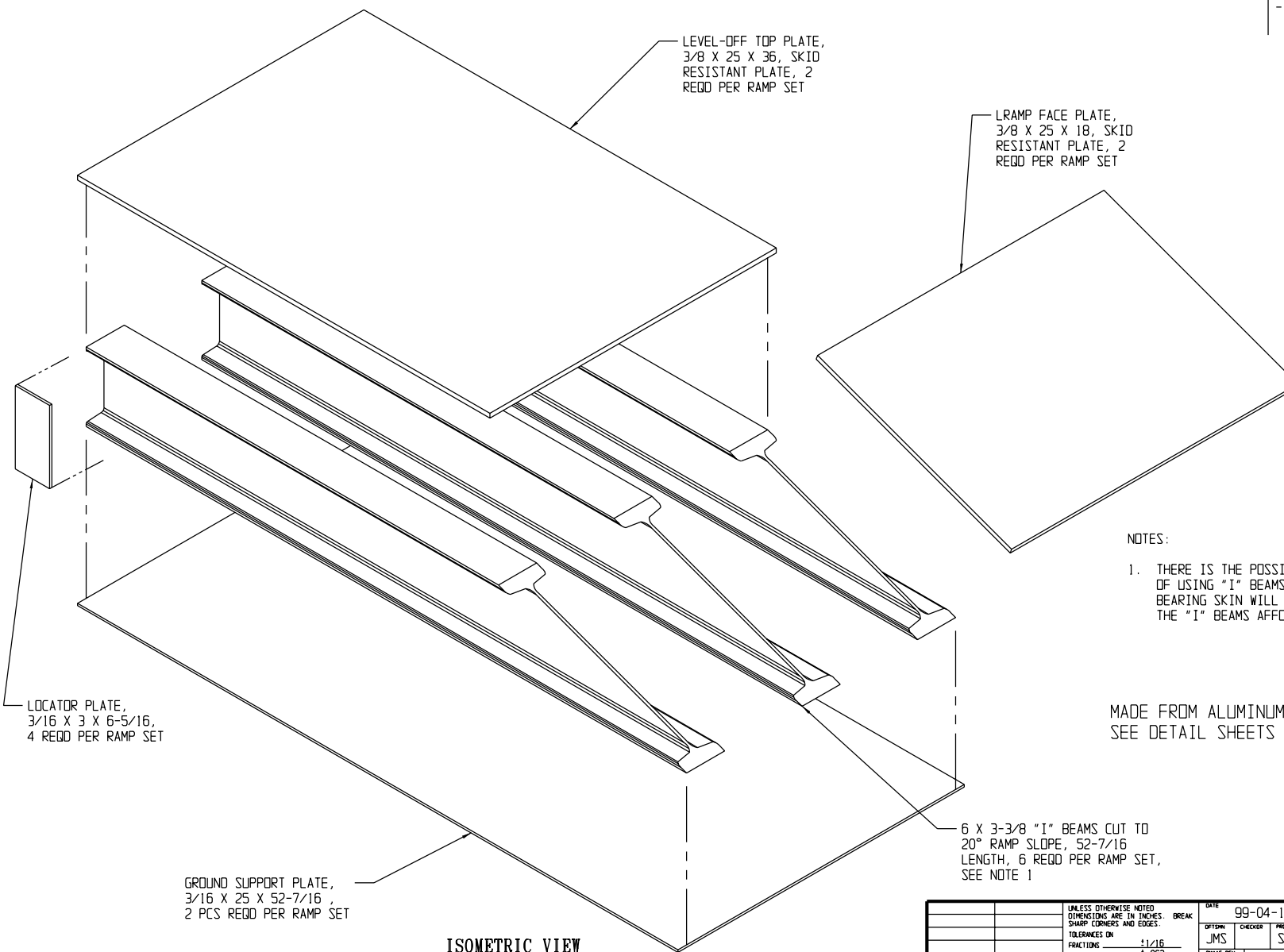


SKETCH #1
RAMPS IN POSITION
PART NO ACV00632-1

UNLESS OTHERWISE NOTED DIMENSIONS ARE IN INCHES. BREAK SHARP CORNERS AND EDGES.		DATE 99-04-16	DESIGN ACTIVITY U.S. ARMY OPERATIONS SUPPORT COMMAND DEFENSE ADMINISTRATION CENTER MCALISTER, OKLAHOMA 74501-9053
TOLERANCES ON FRACTIONS $\pm 1/16$	DECIMALS $\pm .002$	ANGLES $\pm 1^\circ$	STEEL OR ALUMINUM RAMP SUITABLE FOR CROP LOADING / UNLOADING USING PLS TRUCK IN THE FIELD
MATERIAL		APPROVED BY OFFICE OF COMMANDING GENERAL, U.S. ARMY MATERIAL COMMAND (AMC)	
NEXT ASSY	USED ON	APPLICATION	SIZE D
APPLICATION		SCALE 3/16	CAGE CODE 28620
			UNIT WT
			SHEET 2 OF 8

DISTRIBUTION STATEMENT A.
APPROVED FOR PUBLIC RELEASE;
DISTRIBUTION IS UNLIMITED.

REVISION			
LTR	DESCRIPTION	DATE	APPROVED
-	PRODUCT BASELINE	99-04-16	



ISOMETRIC VIEW

NOTES:

1. THERE IS THE POSSIBILITY OF SHEERING 3/8 RIB PLATES INSTEAD OF USING "I" BEAMS. HOWEVER; EXPERIENCE INDICATES THE BEARING SKIN WILL DEVELOPE A RIBBING EFFECT OVER TIME. THE "I" BEAMS AFFORD MDRE BEARING SUPPORT AND STABILITY

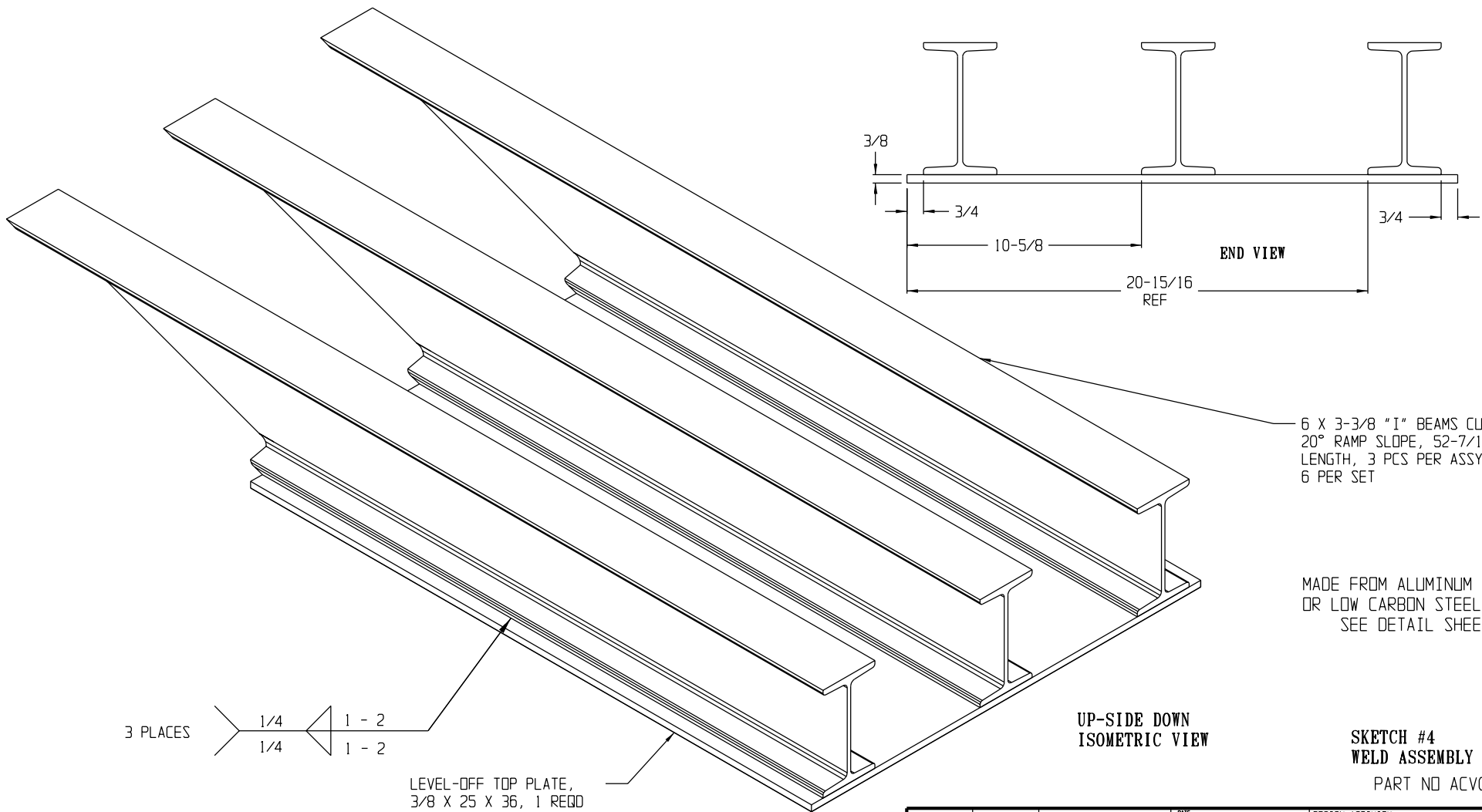
MADE FROM ALUMINUM OR LOW CARBON STEEL,
SEE DETAIL SHEETS AT 7 OF 8 AND 8 OF 8

SKETCH #3
EXPLODED VIEW OF WELD PARTS
PART NO ACV00632-1

DISTRIBUTION STATEMENT A.
APPROVED FOR PUBLIC RELEASE;
DISTRIBUTION IS UNLIMITED.

UNLESS OTHERWISE NOTED DIMENSIONS ARE IN INCHES. BREAK SHARP CORNERS AND EDGES.		DATE: 99-04-16	DESIGN ACTIVITY: U.S. ARMY OPERATIONS SUPPORT COMMAND GDFENSE ADMINISTRATION CENTER MCALISTER, OKLAHQMA 74501-9053
TOLERANCES ON FRACTIONS: $\pm 1/16$	DECIMALS: $\pm .002$	ANGLES: $\pm 1^\circ$	STEEL OR ALUMINUM RAMP SUITABLE FOR CROP LOADING / UNLOADING USING PLS TRUCK IN THE FIELD
MATERIAL:		APPROVED BY: JMS (CHECKER) SPRAGUE (PROJ ENGR)	
NEXT ASSY:	USED ON:	APPROVED BY: JMS (CHECKER) SPRAGUE (PROJ ENGR)	SIZE: D CAGE CODE: 28620
APPLICATION:		APPROVED BY: JMS (CHECKER) SPRAGUE (PROJ ENGR)	SCALE: 5/16 UNIT WT: SHEET 3 OF 8

REVISION			
LTR	DESCRIPTION	DATE	APPROVED
-	PRODUCT BASELINE	99-04-16	



6 X 3-3/8 "I" BEAMS CUT TO
20° RAMP SLOPE, 52-7/16
LENGTH, 3 PCS PER ASSY,
6 PER SET

MADE FROM ALUMINUM
OR LOW CARBON STEEL
SEE DETAIL SHEETS

UP-SIDE DOWN
ISOMETRIC VIEW

SKETCH #4
WELD ASSEMBLY DETAIL
PART NO ACV00632-1

3 PLACES
1/4 1 - 2
1/4 1 - 2

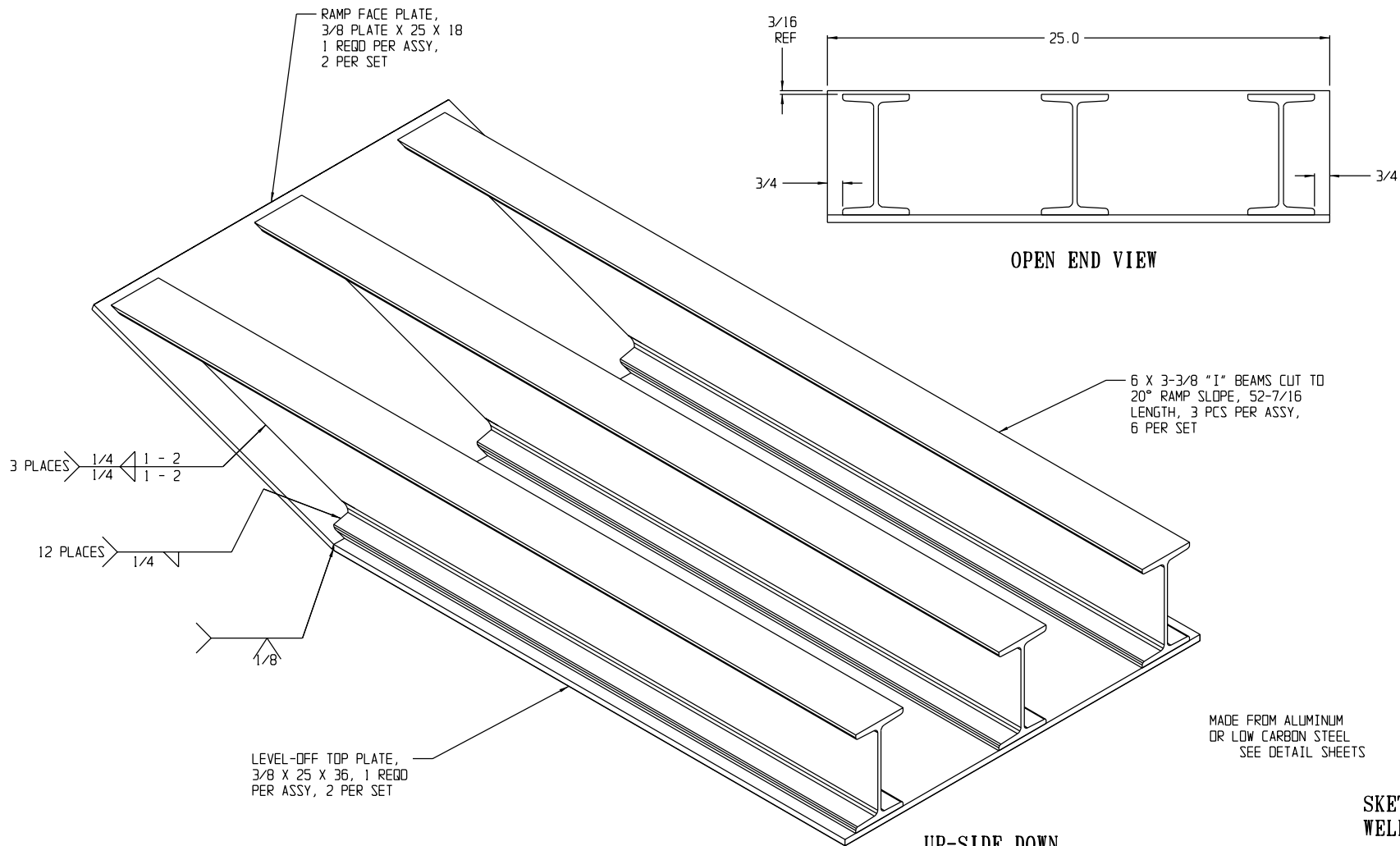
LEVEL-OFF TOP PLATE,
3/8 X 25 X 36, 1 REQD
PER ASSEMBLY, 2 PER SET

UNLESS OTHERWISE NOTED DIMENSIONS ARE IN INCHES. BREAK SHARP CORNERS AND EDGES.		DATE 99-04-16	DESIGN ACTIVITY U. S. ARMY OPERATIONS SUPPORT COMMAND DEFENSE ADMINISTRATION CENTER MCALISTER, OKLAHOMA 74501-9053
TOLERANCES ON FRACTIONS ±1/16	DECIMALS ±.002	ANGLES ±1°	STEEL OR ALUMINUM RAMP SUITABLE FOR CROP LOADING / UNLOADING USING PLS TRUCK IN THE FIELD
MATERIAL		DESIGNED BY JMS	
APPROVED BY GENERAL, U. S. ARMY MATERIAL COMMAND (AMC)		SUBMITTED BY CHIEF, MAINTENANCE ENG DIV	SIZE D
NEXT ASSY		USED ON	CAGE CODE 28620
APPLICATION		U. S. ARMY DEFENSE ADMINISTRATION CENTER	SCALE 7/16 UNIT WT SHEET 4 OF 8

DISTRIBUTION STATEMENT A.

APPROVED FOR PUBLIC RELEASE;
DISTRIBUTION IS UNLIMITED.

REVISION			
LTR	DESCRIPTION	DATE	APPROVED
-	PRODUCT BASELINE ERR e#e####	YY-MM-DD	YY-MM-DD



OPEN END VIEW

UP-SIDE DOWN
ISOMETRIC VIEW

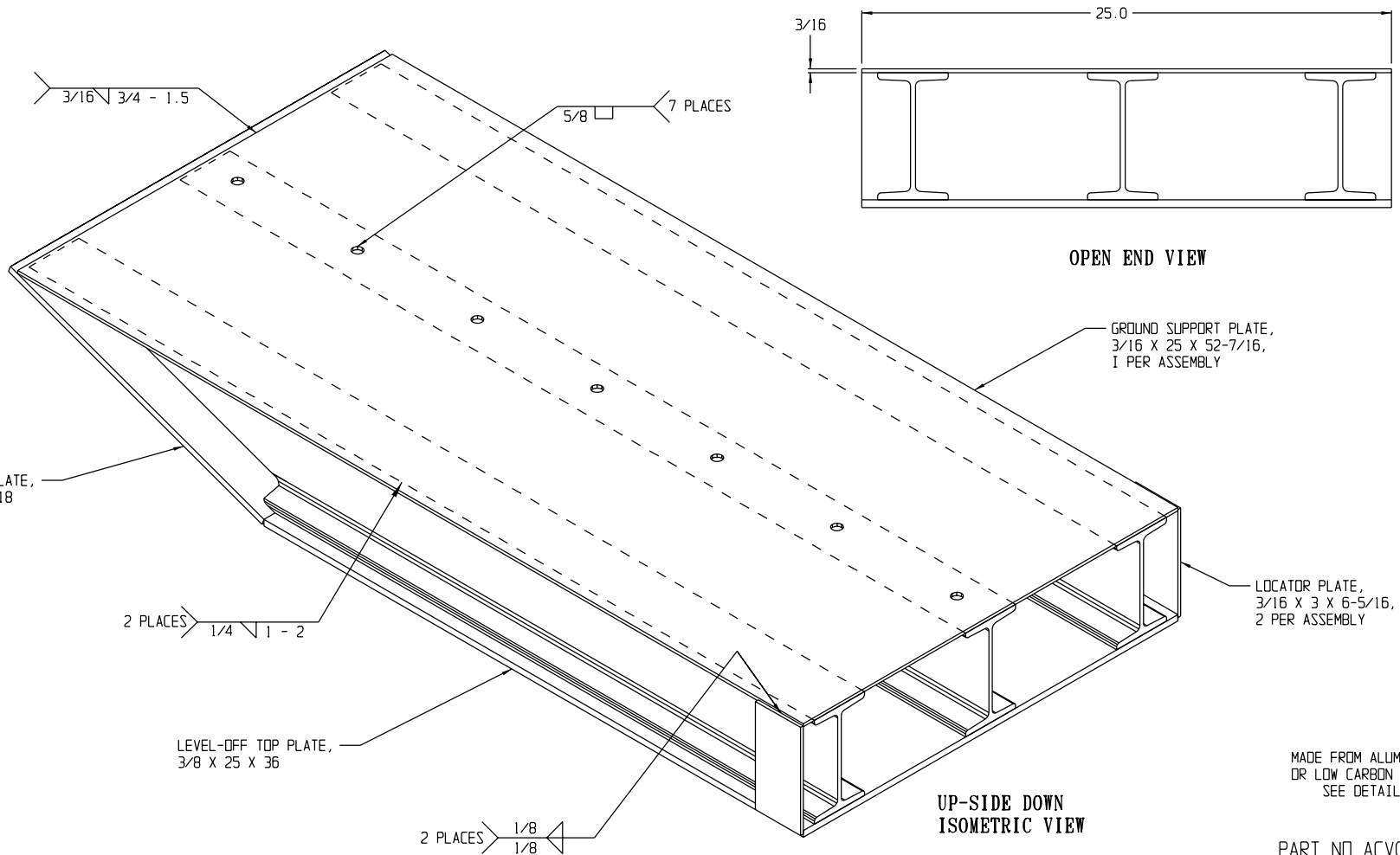
SKETCH #5
WELD ASSEMBLY DETAIL
PART NO ACV00632-5

MADE FROM ALUMINUM
OR LOW CARBON STEEL
SEE DETAIL SHEETS

DISTRIBUTION STATEMENT A.
APPROVED FOR PUBLIC RELEASE;
DISTRIBUTION IS UNLIMITED.

UNLESS OTHERWISE NOTED DIMENSIONS ARE IN INCHES. BREAK SHARP CORNERS AND EDGES.		DATE 99-04-16	DESIGN ACTIVITY U. S. ARMY OPERATIONS SUPPORT COMMAND DEFENSE ADMINISTRATION CENTER MCALISTER, OKLAHOMA 74501-9053	
TOLERANCES ON FRACTIONS DECIMALS	± .06	DRGSMN JMS	CHECKER eee	PROJ ENGR SPRAGUE
MATERIAL		SMAC-DEV	CHIEF, MAINTENANCE ENG DIV	
SUBMITTED		CHIEF, LOGISTICS ENGINEERING OFFICE		
APPROVED BY OFFICE OF COMMANDING GENERAL, U. S. ARMY MATERIAL COMMAND		STEEL OR ALUMINUM RAMP SUITABLE FOR CROP LOADING / UNLOADING USING PLS TRUCK IN THE FIELD		
XXXXXXX	CROP / PLS	SIZE D	CAGE CODE 28620	ACV00632-5
NEXT ASSY	USED ON	SCALE 3/8	UNIT WT	SHEET 5 OF 8
APPLICATION		DEFENSE ADMINISTRATION CENTER		

REVISION			
LTR	DESCRIPTION	DATE	APPROVED
-	PRODUCT BASELINE ERR e#e####	YY-MM-DD	YY-MM-DD



OPEN END VIEW

UP-SIDE DOWN ISOMETRIC VIEW

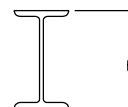
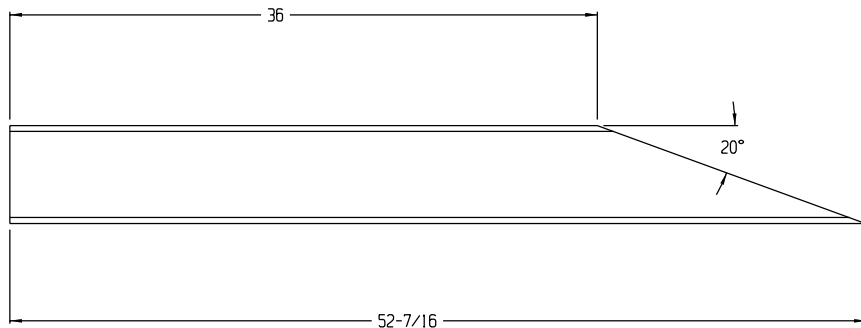
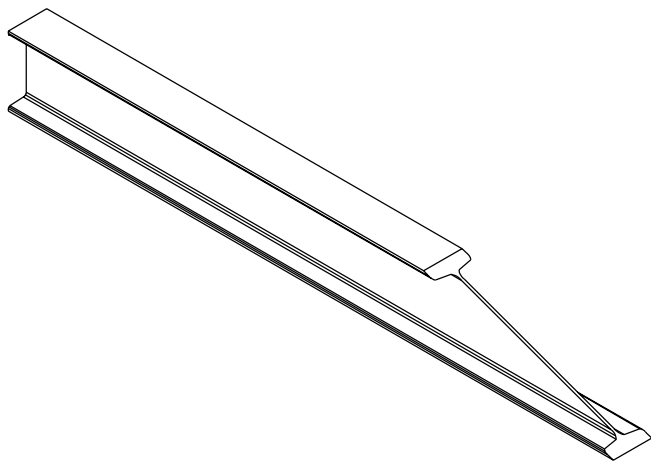
MADE FROM ALUMINUM
OR LOW CARBON STEEL
SEE DETAIL SHEETS

PART NO ACV00632-6

DISTRIBUTION STATEMENT A.
APPROVED FOR PUBLIC RELEASE;
DISTRIBUTION IS UNLIMITED.

UNLESS OTHERWISE NOTED DIMENSIONS ARE IN INCHES. BREAK SHARP CORNERS AND EDGES.		DATE 99-04-16	DESIGN ACTIVITY U. S. ARMY OPERATIONS SUPPORT COMMAND DEFENSE ADMINISTRATION CENTER MCALISTER, OKLAHOMA 74501-9053
TOLERANCES ON FRACTIONS DECIMALS	± ± ±.06	DESIGNED BY JMS	CHECKED BY eee
MATERIAL		PROJ ENGR SPRAGUE	SMAC-DEV
APPROVED BY OFFICE OF CONTRACTING GENERAL, U. S. ARMY MATERIAL COMMAND		CHIEF, MAINTENANCE ENG DIV	CHIEF, LOGISTICS ENGINEERING OFFICE
XXXXXXXXXXXX	XXXXXXXXXXXX	STEEL OR ALUMINUM RAMP SUITABLE FOR CRCP LOADING / UNLOADING USING PLS TRUCK IN THE FIELD	
NEXT ASSY	USED ON	SIZE D	CAGE CODE 28620
APPLICATION		SCALE 3/8	UNIT WT
		ACV00632-6	
		SHEET 6 OF 8	

REVISION			
LTR	DESCRIPTION	DATE	APPROVED
-	PRODUCT BASELINE ERR e#e####	YY-MM-DD	YY-MM-DD



MATERIAL	
DESCRIPTION	NUMBER REQUIRED
STEEL I BEAM, S 6 X 12.5 LBS/FT. CONFORMS TO ASTM A36	6 PER RAMP SET

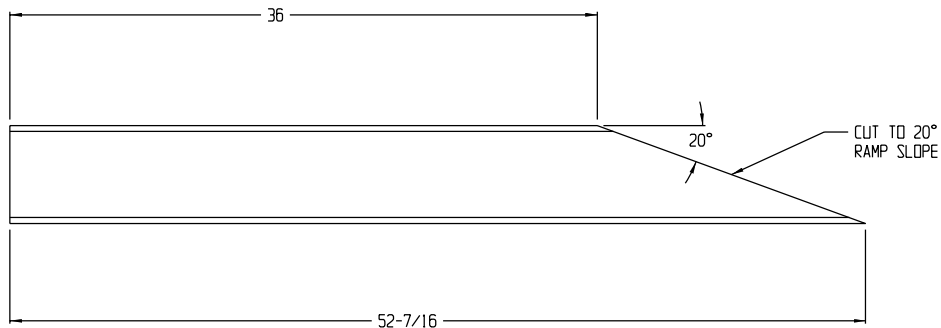
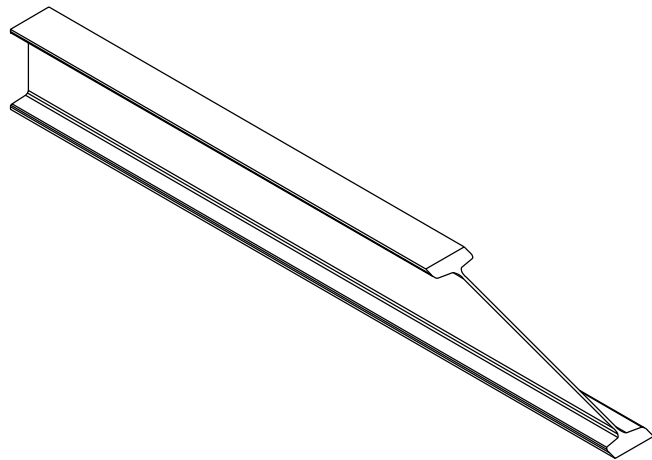
STEEL RAMP PARTS

PART NO ACV00632-7

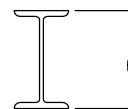
DISTRIBUTION STATEMENT A.
APPROVED FOR PUBLIC RELEASE;
DISTRIBUTION IS UNLIMITED.

UNLESS OTHERWISE NOTED DIMENSIONS ARE IN INCHES. BREAK SHARP CORNERS AND EDGES.		DATE 00-09-15	DESIGN ACTIVITY U. S. ARMY OPERATIONS SUPPORT COMMAND DEFENSE ADMINISTRATION CENTER MCALISTER, OKLAHOMA 74501-9053
TOLERANCES IN FRACTIONS DECIMALS	± ± ± .06	DR/SPR MSB	CHECKER e#e
MATERIAL		PROJ ENGR BARTOSIAK	
		SMAC-DEV	CHIEF, MAINTENANCE ENG. DIV.
		SUBMITTED	
		CHIEF, LOGISTICS ENGINEERING OFFICE	
		APPROVED BY OFFICE OF COMPROVING GENERAL, U.S. ARMY MATERIAL COMMAND	
XXXXXXXXXXXX	XXXXXXXXXXXX	SIZE D	CAGE CODE 28620
NEXT ASSY	USED ON	ACV00632-7	
APPLICATION		SCALE 1/4	UNIT WT SHEET 7 OF 8

REVISION			
LTR	DESCRIPTION	DATE	APPROVED
-	PRODUCT BASELINE ERR e#e####	YY-MM-DD	YY-MM-DD



ALUMINUM I BEAM



MATERIALS FOR ALUMINUM RAMP	
DESCRIPTION	NUMBER REQUIRED
ALUMINUM 6061-T6 I BEAM, 6" DEPTH, 4.302 LBS/FT., 52-7/16" LONG	6 PER RAMP SET
LOCATOR PLATE, ALUMINUM 3/16" X 3" X 6-5/16"	4 PER RAMP SET
GROUND SUPPORT PLATE, ALUMINUM 5052, 3/16" X 25" X 52-7/16"	2 PER RAMP SET
LEVEL OFF PLATE, ALUMINUM 6061-T6, DIAMOND TREAD, 3/8" X 25" X 36"	2 PER RAMP SET
RAMP FACE PLATE, ALUMINUM, 6061-T6, DIAMOND TREAD, 3/8" X 25" X 18"	2 PER RAMP SET

ALUMINUM RAMP PARTS

PART NO ACV00632-8

DISTRIBUTION STATEMENT A.

APPROVED FOR PUBLIC RELEASE;
DISTRIBUTION IS UNLIMITED.

UNLESS OTHERWISE NOTED DIMENSIONS ARE IN INCHES. BREAK SHARP CORNERS AND EDGES.		DATE	00-09-15	DESIGN ACTIVITY	
TOLERANCES UNLESS OTHERWISE SPECIFIED:	FRACTIONS	OFSPN	CHECKER	PROJ ENGR	U.S. ARMY OPERATIONS SUPPORT COMMAND
	DECIMALS	MSB	e#e	BARTOSIAK	DEFENSE ADMINISTRATION CENTER
		SMAC-DEV			MCALISTER, OKLAHOMA 74501-9053
					STEEL OR ALUMINUM RAMP SUITABLE FOR CROP LOADING / UNLOADING USING PLS TRUCK IN THE FIELD
					CHIEF, MAINTENANCE ENG. DIV.
					CHIEF, LOGISTICS ENGINEERING OFFICE
APPROVED BY OFFICE OF COMPROVING GENERAL, U.S. ARMY MATERIAL COMMAND					APPROVED BY OFFICE OF COMPROVING GENERAL, U.S. ARMY MATERIAL COMMAND
XXXXXXXXXXXX	XXXXXXXXXXXX				SIZE
NEXT ASSY	USED ON				D
					28620
					28620
					SCALE
					1/4
					UNIT WT
					SHEET 8 OF 8