

NOTES:

1. MODIFIED MH1/9-03SW4048 OR MH1/9-06SW4048 PALLET ON SHEET 3.
2. MODIFIED STYLE 1B MIL-DTL-15011 PALLET ON SHEET 2.
3. MATERIAL-LUMBER: ASTM-D6199, GROUP III OR IV. NOMINAL DIMENSIONS FOR THIS DRAWING ARE APPROVED.
4. MATERIAL-NAILS FOR MODIFIED MIL-DTL-15011 PALLET: ASTM-F1667, TYPE I, STYLE 18 PALLET NAIL. EXCEPT THAT THE NAIL POINT MAY BE DIAMOND (NOT LONGER THAN 5/32 INCH), OR CHISEL PROVIDED THE WIDTH DOES NOT EXCEED THE WIRE DIAMETER.
 - A. NAIL TOP DECK BOARDS TO STRINGER BOARDS WITH TWO 1-1/2 OR 1-5/8 INCH, 0.120 INCH DIAMETER DRIVE-SCREW NAILS AT EACH JOINT.
 - B. NAIL OUTER DECK BOARDS TO STRINGER BOARDS WITH THREE 1-1/2 OR 1-5/8 INCH, 0.120 INCH DIAMETER DRIVE-SCREW NAILS AT EACH JOINT.
 - C. NAIL THRU TOP DECK BOARD AND STRINGER BOARD INTO CENTER POST WITH FOUR 3-1/4 INCH, 0.135 INCH DIAMETER DRIVE-SCREW NAILS AND INTO OUTER POST WITH THREE 3-1/4 INCH, 0.135 INCH DIAMETER DRIVE-SCREW NAILS.
 - D. NAIL EACH BOTTOM DECK BOARD TO CENTER POST WITH FOUR 2-1/4 INCH, 0.120 INCH DIAMETER DRIVE-SCREW NAILS AND INTO OUTER POST WITH THREE 2-1/4 INCH, 0.120 INCH DIAMETER DRIVE-SCREW NAILS.
5. MATERIAL-NAILS FOR MODIFIED MH1/9-03SW4048 OR MH1/9-06SW4048 PALLET: ASTM-F1667, TYPE I, STYLE 18 PALLET NAILS. NAIL TOP DECK BOARDS AND CENTER BOTTOM DECK BOARDS TO POSTS WITH TWO 2-1/2 INCH NAILS AT EACH JOINT. NAIL OUTER TOP DECK BOARDS AND BOTTOM DECK BOARDS TO POSTS WITH THREE 2-1/2 INCH NAILS AT EACH JOINT.
6. PAINT THE OPPOSITE END FROM THE MANUFACTURE MARKING BLACK IN ACCORDANCE WITH MIL-STD-171.
7. PRESERVATIVE TREATMENT IS NOT REQUIRED FOR THESE PALLETS.
8. ALL NON-MANUFACTURED WOOD USED IN THE UNIT LOAD WILL BE HEAT TREATED AND MARKED TO SHOW CONFORMANCE TO THE INTERNATIONAL PLANT PROTECTION CONVENTION STANDARD (IPPC), ISPM-15. SEE DAC DRAWING ACV00831 FOR ISPM-15 CERTIFICATION MARKING AND PLACEMENT DETAILS.

REVISION		APPROVED		
LTR.	DESCRIPTION	ENG.	BY	DATE
-	PRODUCT BASELINE ERR M5Y2014 / 95-11-13	SMS	MICHELS	95-11-13
A	ERR R15K3007 / 15-11-18	MRB	FIEFFER	15-11-05

CAD MAINTAINED. CHANGES SHALL BE INCORPORATED BY THE DESIGN ACTIVITY.

PART NO. ACV00200

DISTRIBUTION STATEMENT A.

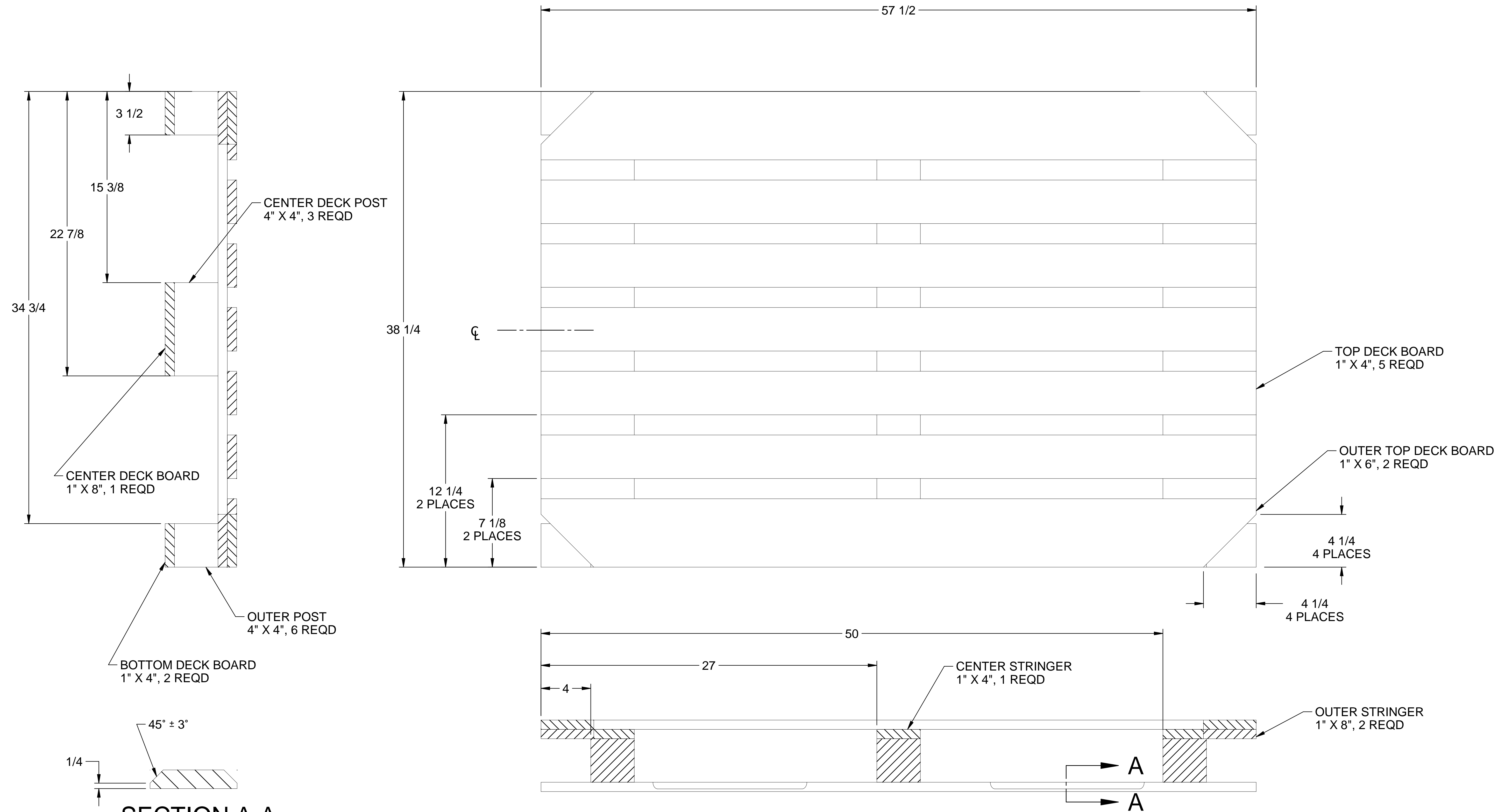
APPROVED FOR PUBLIC RELEASE;
DISTRIBUTION IS UNLIMITED.

REVISION STATUS OF SHEETS	
SHEET	REVISION
1 OF 3	A
2 OF 3	A
3 OF 3	A

UNLESS OTHERWISE NOTED DIMENSIONS ARE IN INCHES		DATE 95-11-13	PROJECT ENGINEER SCHULTZ	DESIGN ACTIVITY U.S. ARMY COMBINED ARMS SUPPORT COMMAND DEFENSE AMMUNITION CENTER (DAC) MCALESTER, OKLAHOMA 74501-9053	
TOLERANCES: .xx .xxx FRACTIONS 125 ±.06 ±.005 ±0°15' +1/4		TEST REPORT N/A	TEST ENGINEER J. H. KROHN	PALLET, SPECIAL 57-1/2 X 38-1/4 WOOD	
REMOVE ALL BURRS AND SHARP EDGES .010 R OR CHAMFER MAX.		SUBMITTED John M. Sprague CHIEF, SUPPLY ENGINEERING DIVISION		ENGINEERING DIRECTORATE THOMAS J. MICHELS	
MATERIAL BULK EXPLOSIVES		APPROVED BY ORDER OF COMMANDING GENERAL, U.S. ARMY MATERIAL COMMAND John L. Byrd, Jr.		SIZE D	CAGE 28620
NEXT ASSEMBLY USED ON		DEFENSE AMMUNITION CENTER		DRAWING No. ACV00200	REV. A
APPLICATION		SCALE 1/4	UNIT WT LBS	SHEET 1 OF 3	

REVISION		APPROVED		
LTR.	DESCRIPTION	ENG.	BY	DATE
-	PRODUCT BASELINE ERR MSY2014 / 95-11-13	SMS	MICHELS	95-11-13
A	ERR R15K3007/ 15-11-18	MRB	FIEFFER	15-11-05

CAD MAINTAINED. CHANGES SHALL BE INCORPORATED BY THE DESIGN ACTIVITY.



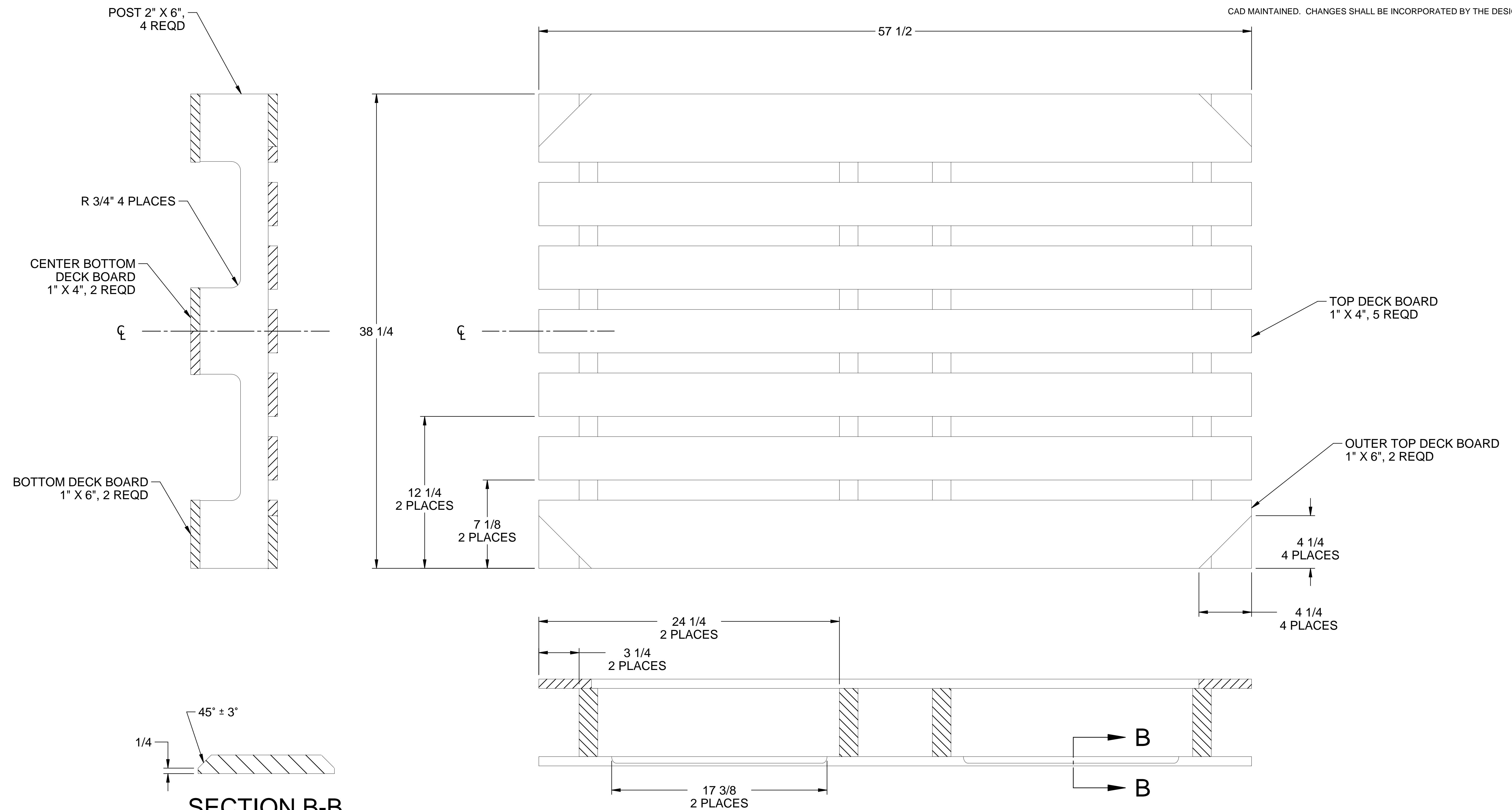
SECTION A-A
SCALE 1/2

DISTRIBUTION STATEMENT A.
APPROVED FOR PUBLIC RELEASE;
DISTRIBUTION IS UNLIMITED.

DATE	PROJECT ENGINEER	DESIGN ACTIVITY	U.S. ARMY COMBINED ARMS SUPPORT COMMAND DEFENSE AMMUNITION CENTER (DAC) MCALESTER, OKLAHOMA 74501-9053	
95-11-13	SCHULTZ			
TEST REPORT	TEST ENGINEER			
N/A	J. H. KROHN			
John M. Sprague CHIEF, SUPPLY ENGINEERING DIVISION		PALLET, SPECIAL 57-1/2 X 38-1/4 WOOD		
THOMAS J. MICHELS ENGINEERING DIRECTORATE		SIZE	CAGE	DRAWING NO.
APPROVED BY ORDER OF COMMANDING GENERAL, U.S. ARMY MATERIAL COMMAND		D	28620	ACV00200
John L. Byrd, Jr. DEFENSE AMMUNITION CENTER		SCALE	1/4	UNIT WT LBS SHEET 2 OF 3
				REV. A

REVISION		APPROVED		
LTR.	DESCRIPTION	ENG.	BY	DATE
-	PRODUCT BASELINE ERR MSY2014 / 95-11-13	SMS	MICHELS	95-11-13
A	ERR R15K3007/ 15-11-18	MRB	FIEFFER	15-11-05

CAD MAINTAINED. CHANGES SHALL BE INCORPORATED BY THE DESIGN ACTIVITY.



DISTRIBUTION STATEMENT A.
 APPROVED FOR PUBLIC RELEASE;
 DISTRIBUTION IS UNLIMITED.

DATE	PROJECT ENGINEER	DESIGN ACTIVITY	U.S. ARMY COMBINED ARMS SUPPORT COMMAND DEFENSE AMMUNITION CENTER (DAC) MCALESTER, OKLAHOMA 74501-9053	
95-11-13	SCHULTZ			
TEST REPORT	TEST ENGINEER			
N/A	J. H. KROHN			
John M. Sprague CHIEF, SUPPLY ENGINEERING DIVISION		PALLET, SPECIAL 57-1/2 X 38-1/4 WOOD		
THOMAS J. MICHELS ENGINEERING DIRECTORATE		SIZE	CAGE	DRAWING No.
APPROVED BY ORDER OF COMMANDING GENERAL, U.S. ARMY MATERIAL COMMAND		D	28620	ACV00200
John L. Byrd, Jr. DEFENSE AMMUNITION CENTER		SCALE	1/4	UNIT WT LBS SHEET 3 OF 3
				REV. A