

NOTES:

1. MODIFIED MH1/9-03SW4048 OR MH1/9-06SW4048 PALLET ON SHEET 2.
2. MODIFIED STYLE 1A MIL-DTL-15011 PALLET ON SHEET 3.
3. THE NATIONAL STOCK NUMBER (NSN) FOR EITHER PALLET IS 3990-01-371-1062.
4. MATERIAL-LUMBER: ASTM-D6199, GROUP III OR IV. NOMINAL DIMENSIONS FOR THIS DRAWING ARE APPROVED.
5. MATERIAL-NAILS FOR MODIFIED MH1/9-03SW4048 OR MH1/9-06SW4048 PALLET: ASTM-F1667, TYPE I, STYLE 18 PALLET NAILS. NAIL TOP DECK BOARDS AND CENTER BOTTOM DECK BOARDS TO POSTS WITH TWO 2-1/2 INCH NAILS AT EACH JOINT. NAIL OUTER TOP DECK BOARDS AND BOTTOM DECK BOARDS TO POSTS WITH THREE 2-1/2 INCH NAILS AT EACH JOINT.
6. MATERIAL-NAILS FOR MODIFIED MIL-DTL-15011 PALLET: ASTM-F1667, TYPE I, STYLE 18 PALLET NAIL. EXCEPT THAT THE NAIL POINT MAY BE DIAMOND (NOT LONGER THAN 5/32 INCH), OR CHISEL PROVIDED THE WIDTH DOES NOT EXCEED THE WIRE DIAMETER.
 - A. NAIL TOP DECK BOARDS TO STRINGER BOARDS WITH TWO 1-1/2 OR 1-5/8 INCH, 0.120 INCH DIAMETER DRIVE-SCREW NAILS AT EACH JOINT.
 - B. NAIL OUTER DECK BOARDS TO STRINGER BOARDS WITH THREE 1-1/2 OR 1-5/8 INCH, 0.120 INCH DIAMETER DRIVE-SCREW NAILS AT EACH JOINT.
 - C. NAIL THRU TOP DECK BOARD AND STRINGER BOARD INTO CENTER POST WITH FOUR 3-1/4 INCH, 0.135 INCH DIAMETER DRIVE-SCREW NAILS AND INTO OUTER POST WITH THREE 3-1/4 INCH, 0.135 INCH DIAMETER DRIVE-SCREW NAILS.
 - D. NAIL EACH BOTTOM DECK BOARD TO CENTER POST WITH FOUR 2-1/4 INCH, 0.120 INCH DIAMETER DRIVE-SCREW NAILS AND INTO OUTER POST WITH THREE 2-1/4 INCH, 0.120 INCH DIAMETER DRIVE-SCREW NAILS.
7. PAINT THE OPPOSITE END FROM THE MANUFACTURE MARKING BLACK IN ACCORDANCE WITH MIL-STD-171.
8. PRESERVATIVE TREATMENT IS NOT REQUIRED FOR THESE PALLETS.
9. ALL NON-MANUFACTURED WOOD USED IN THE UNIT LOAD WILL BE HEAT TREATED AND MARKED TO SHOW CONFORMANCE TO THE INTERNATIONAL PLANT PROTECTION CONVENTION STANDARD (IPPC), ISPM-15. SEE DAC DRAWING ACV00831 FOR ISPM-15 CERTIFICATION MARKING AND PLACEMENT DETAILS.

| REVISION | | APPROVED | | |
|----------|---|----------|----------|----------|
| LTR. | DESCRIPTION | ENG. | BY | DATE |
| - | PRODUCT BASELINE ERR M3Y2001 / 93-01-18 | SMS | MICHELS | 93-01-18 |
| A | ERR MAY2019 / 94-11-14 | SMS | MICHELS | 94-11-14 |
| B | ERR M5Y2009 / 97-02-03 | SMS | MICHELS | 97-02-11 |
| C | ECP R0Y3000 / 00-08-15 | MSB | FRERICHS | 00-10-20 |
| D | ERR R15K3007 / 15-11-18 | MRE | FIEFFER | 15-11-05 |

CAD MAINTAINED. CHANGES SHALL BE INCORPORATED BY THE DESIGN ACTIVITY.

PART NO. ACV00183

DISTRIBUTION STATEMENT A.

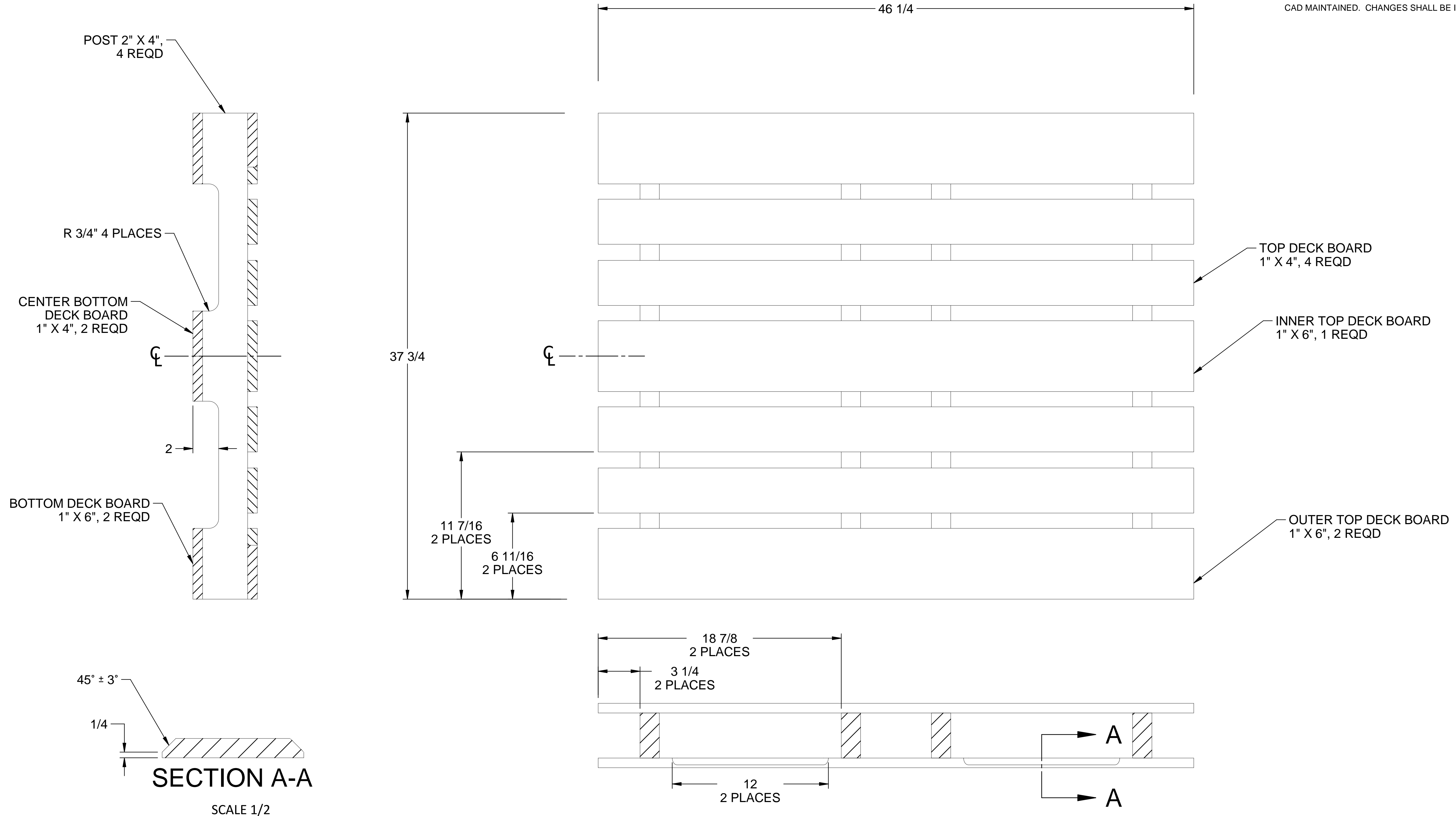
APPROVED FOR PUBLIC RELEASE;
DISTRIBUTION IS UNLIMITED.

| REVISION STATUS OF SHEETS | |
|---------------------------|----------|
| SHEET | REVISION |
| 1 OF 3 | D |
| 2 OF 3 | D |
| 3 OF 3 | D |

| | | | | |
|---|--|---|------------------|---|
| UNLESS OTHERWISE NOTED DIMENSIONS ARE IN INCHES | | DATE | PROJECT ENGINEER | DESIGN ACTIVITY |
| TOLERANCES: .xx .xxx FRACTIONS 125 ✓ ±.06 ±.005 ±0°15' +1/4 REMOVE ALL BURRS AND SHARP EDGES .010 R OR CHAMFER MAX. | | 93-01-18 | SCHULTZ | U.S. ARMY COMBINED ARMS SUPPORT COMMAND DEFENSE AMMUNITION CENTER (DAC) MCALESTER, OKLAHOMA 74501-9053 |
| MATERIAL | | TEST REPORT | TEST ENGINEER | PALLET, SPECIAL 46-1/4 X 37-3/4 WOOD |
| BULK | | N/A | J. H. KROHN | |
| 19-48-4177/1 EXPLOSIVES | | SUBMITTED | | SIZE CAGE DRAWING No. REV. D 28620 ACV00183 D |
| NEXT ASSEMBLY USED ON | | CHIEF, SUPPLY ENGINEERING DIVISION | | |
| APPLICATION | | ENGINEERING DIRECTORATE APPROVED BY ORDER OF COMMANDING GENERAL, U.S. ARMY MATERIAL COMMAND | | SCALE UNIT WT SHEET 1/4 LBS 1 OF 3 |
| | | Thomas J. Michels William F. Ernst John L. Byrd, Jr. | | |

| REVISION | | APPROVED | | |
|----------|---|----------|----------|----------|
| LTR. | DESCRIPTION | ENG. | BY | DATE |
| - | PRODUCT BASELINE ERR M3Y2001 / 93-01-18 | SMS | MICHELS | 93-01-18 |
| A | ERR M4Y2019 / 94-11-14 | SMS | MICHELS | 94-11-14 |
| B | ERR M5Y2009 / 97-02-03 | SMS | MICHELS | 97-02-11 |
| C | ECP R0Y3000 / 00-08-15 | MSB | FRERICHS | 00-10-20 |
| D | ERR R15K3007 / 15-11-18 | MRB | FIEFFER | 15-11-05 |

CAD MAINTAINED. CHANGES SHALL BE INCORPORATED BY THE DESIGN ACTIVITY.

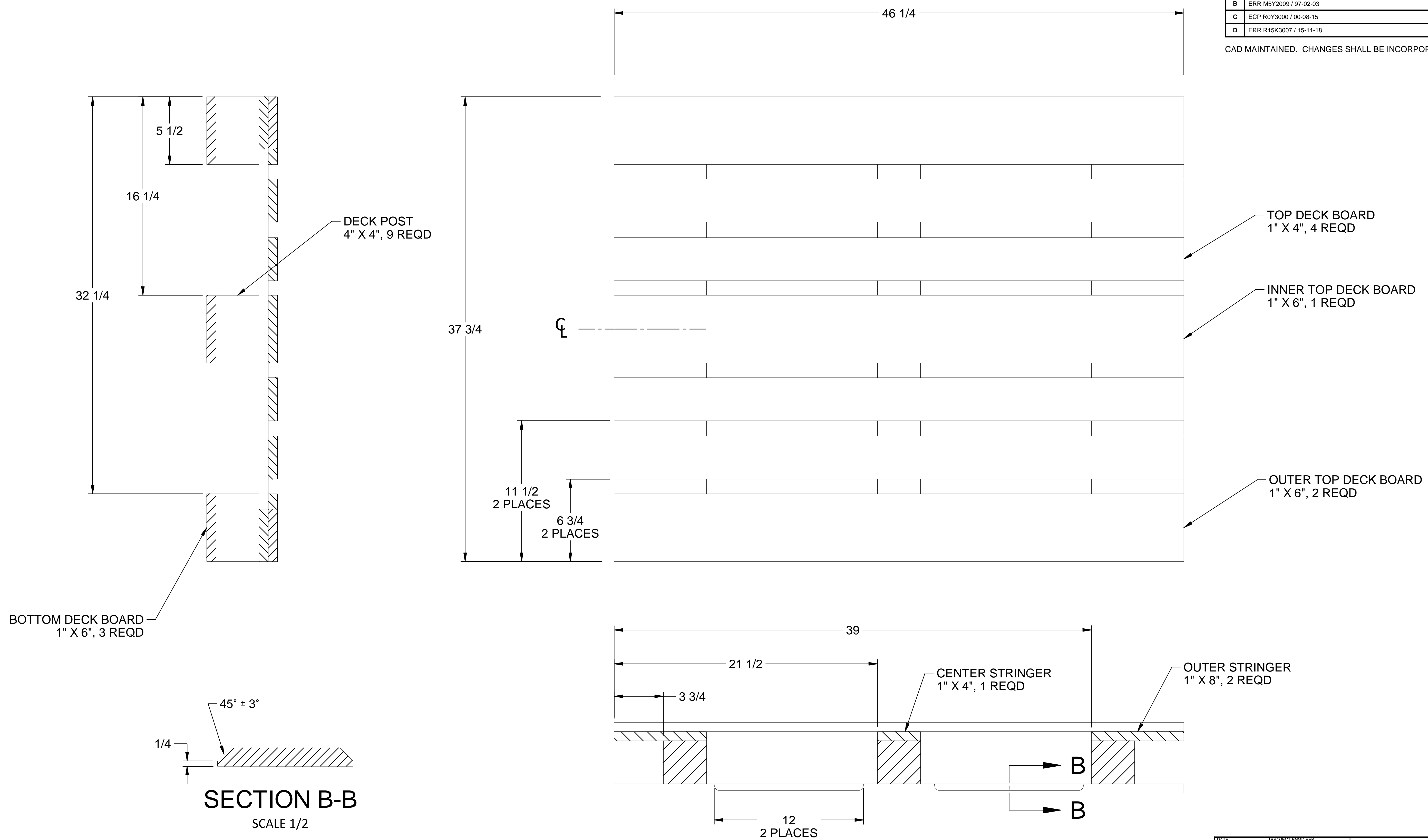


DISTRIBUTION STATEMENT A.
 APPROVED FOR PUBLIC RELEASE;
 DISTRIBUTION IS UNLIMITED.

| | | | | |
|---|------------------|--|---|---------|
| DATE | PROJECT ENGINEER | DESIGN ACTIVITY | U.S. ARMY COMBINED ARMS SUPPORT COMMAND DEFENSE AMMUNITION CENTER (DAC) MCALESTER, OKLAHOMA 74501-9053 | |
| 93-01-18 | SCHULTZ | | | |
| TEST REPORT | TEST ENGINEER | | | |
| N/A | J. H. KROHN | | | |
| Thomas J. Michels CHIEF, SUPPLY ENGINEERING DIVISION | | PALLET, SPECIAL 46-1/4 X 37-3/4 WOOD | | |
| SUBMITTED | | ENGINEERING DIRECTORATE | SIZE | CAGE |
| William F. Ernst | | APPROVED BY ORDER OF COMMANDING GENERAL, U.S. ARMY MATERIAL COMMAND | D | 28620 |
| John L. Byrd, Jr. | | | DRAWING No. | REV. |
| | | | ACV00183 | D |
| | | SCALE | 1/4 | UNIT WT |
| | | | LBS | SHEET |
| | | | | 2 OF 3 |

| REVISION | | APPROVED | | |
|----------|---|----------|----------|----------|
| LTR. | DESCRIPTION | ENG. | BY | DATE |
| - | PRODUCT BASELINE ERR M3Y2001 / 93-01-18 | SMS | MICHELS | 93-01-18 |
| A | ERR M4Y2019 / 94-11-14 | SMS | MICHELS | 94-11-14 |
| B | ERR M5Y2009 / 97-02-03 | SMS | MICHELS | 97-02-11 |
| C | ECP R0Y3000 / 00-08-15 | MSB | FRERICHS | 00-10-20 |
| D | ERR R15K3007 / 15-11-18 | MRB | FIEFFER | 15-11-05 |

CAD MAINTAINED. CHANGES SHALL BE INCORPORATED BY THE DESIGN ACTIVITY.



SECTION B-B
SCALE 1/2

DISTRIBUTION STATEMENT A.
APPROVED FOR PUBLIC RELEASE;
DISTRIBUTION IS UNLIMITED.

| | | | | |
|--|------------------|---|---------|-------------|
| DATE | PROJECT ENGINEER | DESIGN ACTIVITY | | |
| 93-01-18 | SCHULTZ | U.S. ARMY COMBINED ARMS SUPPORT COMMAND DEFENSE AMMUNITION CENTER (DAC) MCALESTER, OKLAHOMA 74501-9053 | | |
| TEST REPORT | TEST ENGINEER | PALLET, SPECIAL 46-1/4 X 37-3/4 WOOD | | |
| N/A | J. H. KROHN | | | |
| Thomas J. Michels CHIEF, SUPPLY ENGINEERING DIVISION | | SIZE | CAGE | DRAWING No. |
| William F. Ernst ENGINEERING DIRECTORATE | | D | 28620 | ACV00183 |
| APPROVED BY ORDER OF COMMANDING GENERAL, U.S. ARMY MATERIAL COMMAND | | SCALE | UNIT WT | SHEET |
| John L. Byrd, Jr. | | 1/4 | LBS | 3 OF 3 |