

CARGO BOX CONVERSION FOR M796 BOLSTER TRAILER

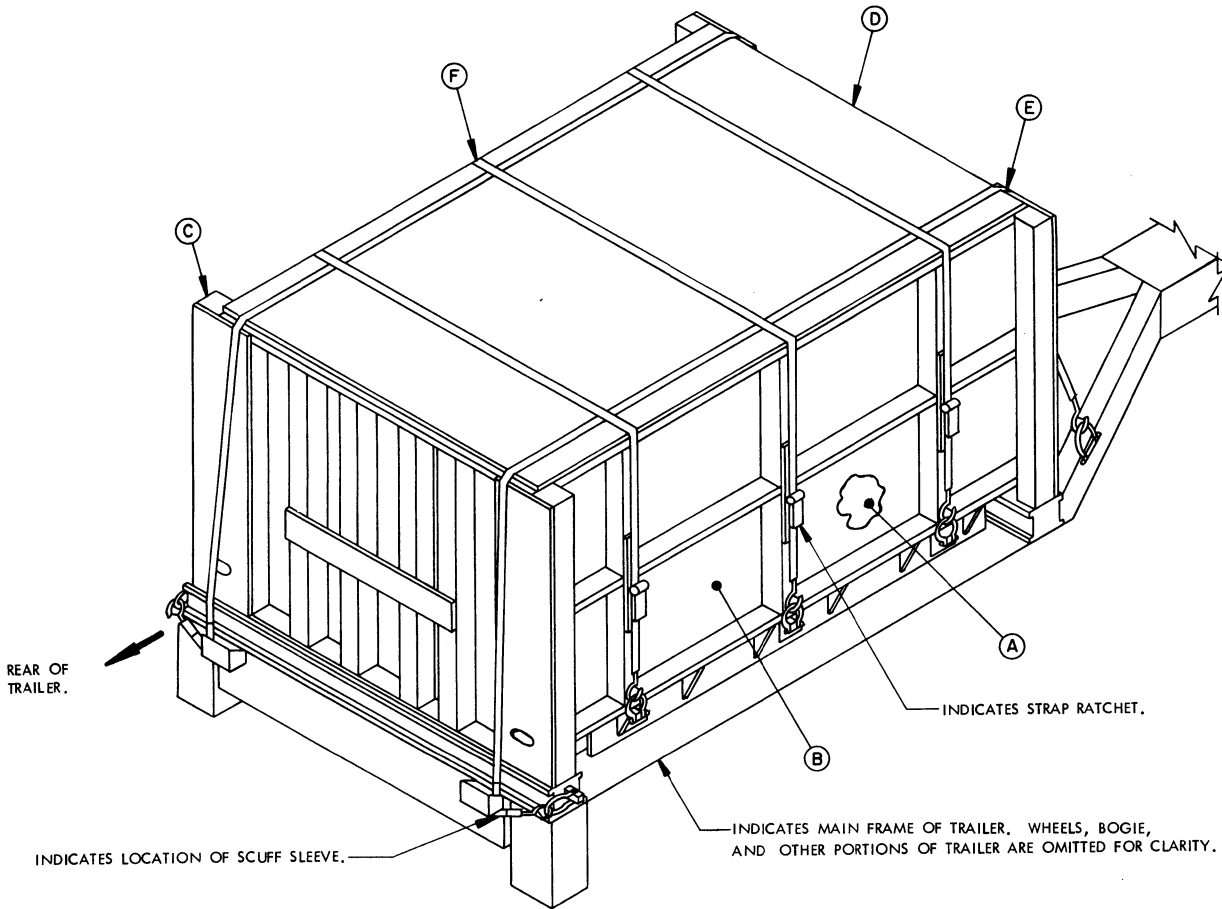
INDEX

<u>ITEM</u>	<u>PAGE (S)</u>
BOX ASSEMBLY AND TIEDOWN ON TRAILER -----	2
GENERAL NOTES, AND MATERIAL SPECIFICATIONS -----	3
CONSTRUCTION DETAILS -----	4-6
PLYWOOD CUTTING PATTERNS -----	6
TYPICAL FILLER DETAILS -----	7-8

THIS PROCEDURAL DRAWING DELINEATES THE CONSTRUCTION OF A MODULAR WOODEN CARGO BOX FOR ASSEMBLY AND TIEDOWN ON AN M796 BOLSTER TRAILER. THESE PROCEDURES PROVIDE A FIELD EXPEDIENT METHOD FOR CONVERTING "POLE" TRAILERS TO "AMMUNITION" TRAILERS FOR HAULING PACKAGED CLASS V EXPLOSIVES, EITHER PALLETIZED OR NON-PALLETIZED. TRAILERS SO CONVERTED MAY BE MOVED FULLY LOADED BY ALL MODES OF TRANSPORTATION (MOTOR, RAIL, AIR, OR MARINE CARRIER). ALL SUCH MOVES MUST BE CONDUCTED IN ACCORDANCE WITH APPROVED PROCEDURES AND IN COMPLIANCE WITH GOVERNING REGULATIONS.

DO NOT SCALE

REVISIONS		DRAFTSMAN	PROJ. ENG.	EVALUATION DIV.
		A. TRS	is	W. F. Emst
		CHECKER	LOG ENGRG OFFICE	STOR & OUTLOADING DIV
		GRG	W. F. Emst	W. F. Emst
		APPROVED, U.S. ARMY ARMAMENT, MUNITIONS AND CHEMICAL COMMAND		
		B. J. Harrison		
		APPROVED BY ORDER OF COMMANDING GENERAL, U.S. ARMY MATERIEL DEVELOPMENT AND READINESS COMMAND (DARCOM)		
		William F. Emst		
		U.S. ARMY DEFENSE AMMUNITION CENTER AND SCHOOL		
		U. S. ARMY DARCOM DRAWING		
		OCTOBER 1983		
		DEF AMMO CEN & SCH DWG NO.		
		D-SMCAC - 4501		



ISOMETRIC VIEW

(GENERAL NOTES CONTINUED)

- P. **LOADING NOTE:** WHEN LOADING THE CARGO BOX FOR A MILITARY EXERCISE, VOIDS WITHIN THE CARGO BOX SHOULD BE MINIMIZED WITHOUT THE USE OF WOODEN FILLERS IF POSSIBLE. RIGID WOODEN FILLERS, HOWEVER, SHOULD BE INSTALLED WHEN EXCESSIVE CARGO SHIFTING COULD OTHERWISE OCCUR AND JEOPARDIZE SAFETY DURING TRAILER MOVEMENT.
- Q. **TRANSPORT BY MOTOR CARRIER:** FOR MOTOR CARRIER MOVEMENT OVER HIGHWAY OR CROSS COUNTRY, APPLICABLE DOT REGULATIONS SHALL BE COMPLIED WITH AND SPEED RESTRICTIONS SHALL BE FOLLOWED.
- R. **TRANSPORT BY RAIL:** FOR APPLICABLE LOADING RULES FOR TRANSPORT BY RAILCAR, REFER TO TM 55-601 AND ASSOCIATION OF AMERICAN RAILROADS MANUAL, "GENERAL RULES GOVERNING THE LOADING OF COMMODITIES ON OPEN TOP CARS AND TRAILERS". PREFACE AND RULES, 1-A, 2, 3, 4, 5, 7, 9, 10, 11, 14, 15, 19-A AND 19-B APPLY.
- S. **TRANSPORT BY AIR:** FOR MOVEMENT BY TACTICAL AIRCRAFT, PROCEDURAL GUIDANCE CONTAINED IN TM 38-250 (AFR 71-4) SHALL BE FOLLOWED. ALSO, FINAL AUTHORITY REGARDING LOADING AND SECUREMENT CONFIGURATION ABOARD THE AIRCRAFT IS AT THE DISCRETION OF THE RESPONSIBLE LOAD MASTER.
- T. **TRANSPORT BY WATER:** FOR SHIP TRANSPORT, PROCEDURAL GUIDANCE CONTAINED IN APPLICABLE TM'S SHALL BE FOLLOWED AND US COAST GUARD REGULATIONS (TITLE 49CFR) SHALL BE SATISFIED.

KEY LETTERS

- (A) FLOOR (1 REQD). SEE FLOOR CONSTRUCTION DETAILS ON PAGE 4. POSITION ON FRAME OF TRAILER SO THAT THE PLYWOOD SHEATHING IS CENTERED BETWEEN THE SIDE RAILS AND EQUALLY OVERLAPS THE CROSS CHANNELS ON EACH END.
- (B) SIDEWALL (2 REQD). SEE SIDEWALL CONSTRUCTION DETAILS ON PAGE 6 AND GENERAL NOTE "J" ON PAGE 3. POSITION AS SHOWN.
- (C) BULKHEAD (2 REQD). SEE BULKHEAD CONSTRUCTION DETAILS ON PAGE 5 AND GENERAL NOTE "J" ON PAGE 3. POSITION AS SHOWN.
- (D) COVER (1 REQD). SEE COVER CONSTRUCTION DETAILS ON PAGE 4. POSITION AS SHOWN.
- (E) LONGITUDINAL WEB STRAP TIEDOWN ASSEMBLY (2 REQD). INSTALL TO EXTEND FROM A TIEDOWN/LIFTING FITTING ON THE FORWARD FRAME OF THE TRAILER, OVER THE ASSEMBLED CARGO BOX, THROUGH THE BRACKET ON THE REAR OF THE TRAILER, TO A TIEDOWN FITTING AT THE END OF THE CROSS CHANNEL. SEE GENERAL NOTES "K" AND "L" ON PAGE 3.
- (F) LATERAL WEB STRAP TIEDOWN ASSEMBLY (3 REQD). INSTALL TO EXTEND FROM A TIEDOWN FITTING ON THE SIDE FRAME OF THE TRAILER, OVER THE ASSEMBLED CARGO BOX, TO A TIEDOWN FITTING ON THE OPPOSITE SIDE OF THE TRAILER. SEE GENERAL NOTE "K" ON PAGE 3.

BOX ASSEMBLY AND TIEDOWN ON TRAILER

BILL OF MATERIAL

2" X 2" LUMBER				
KEY NO.	LENGTH	NO. REQD	LINEAR FEET	BOARD FEET
②	87-1/2"	1	7.3	2.4
④	20"	6	10.0	3.3
⑳	89-1/2"	2	14.9	5.0
㉑	50-1/2"	4	16.8	5.6
TOTAL 2" X 2" LUMBER REQD			49.0	16.3
2" X 4" LUMBER				
KEY NO.	LENGTH	NO. REQD	LINEAR FEET	BOARD FEET
①	87-1/2"	2	14.6	9.7
③	25"	9	18.8	12.5
⑤	20"	3	5.0	3.3
⑪	55-1/2"	2	9.3	6.2
⑯	97-1/2"	6	48.8	32.5
⑰	20-3/4"	12	20.8	13.8
㉒	50-1/2"	1	4.2	2.8
TOTAL 2" X 4" LUMBER REQD			121.5	80.8
4" X 4" LUMBER				
KEY NO.	LENGTH	NO. REQD	LINEAR FEET	BOARD FEET
⑨	50"	12	50.0	66.7
⑩	51-1/2"	4	17.2	22.9
TOTAL 4" X 4" LUMBER REQD			67.2	89.6
3/4" PLYWOOD (SEE PAGE 6 FOR CUTTING PATTERNS)				
KEY NO.	SIZE	NO. REQD	SQ. FEET	SHEETS
⑥	48" X 53-3/4"	1	17.9	BASED ON 4' BY 8' PIECES. SEE PAGE 6 FOR CUTTING GUIDANCE.
⑦	43" X 53-3/4"	1	16.1	
⑧	4-7/8" X 22-1/4"	2	1.5	
⑫	32" X 4-7/8"	2	2.2	
⑬	48" X 10-3/4"	4	14.3	
⑭	47-1/4" X 33-3/4"	2	22.1	
⑮	47-1/4" X 20"	2	13.1	
⑱	48" X 91"	2	60.7	
㉓	15-7/8" X 1-1/2"	6	1.0	
㉔	48" X 62"	2	41.3	
TOTAL 3/4" PLYWOOD REQD			190.2	6
NAILS, 6d (2")		600 REQD	3-1/2 LBS	
NAILS, 10d (3")		135 REQD	2 LBS	
CAULK		AS REQD	NIL	
PAINT		AS REQD	8 LBS	
TIEDOWN STRAPS		5 REQD	25 LBS	

* NOTE: KEY NUMBERS ARE IDENTIFIED TO FACILITATE CONSTRUCTION.

MATERIAL SPECIFICATIONS

LUMBER ---- TM 743-200-1 (DUNNAGE LUMBER) AND FED SPEC MM-L-751; DOUGLAS FIR OR COMPARABLE LUMBER WITH STRAIGHT GRAIN AND FREE FROM MATERIAL DEFECTS.

PLYWOOD -- FED SPEC NN-P-530; GROUP B, PS-1 (CONSTRUCTION AND INDUSTRIAL), EXTERIOR, GRADE B-C. IF SPECIFIED GRADE IS NOT AVAILABLE, A BETTER EXTERIOR GRADE MAY BE SUBSTITUTED.

NAILS ---- FED SPEC FF-N-105; COMMON.

CAULK ---- COMMERCIAL ITEM DESCRIPTION A-A-272: TYPE III, BUTYL RUBBER CAULK OR FED SPEC TT-S-001657.

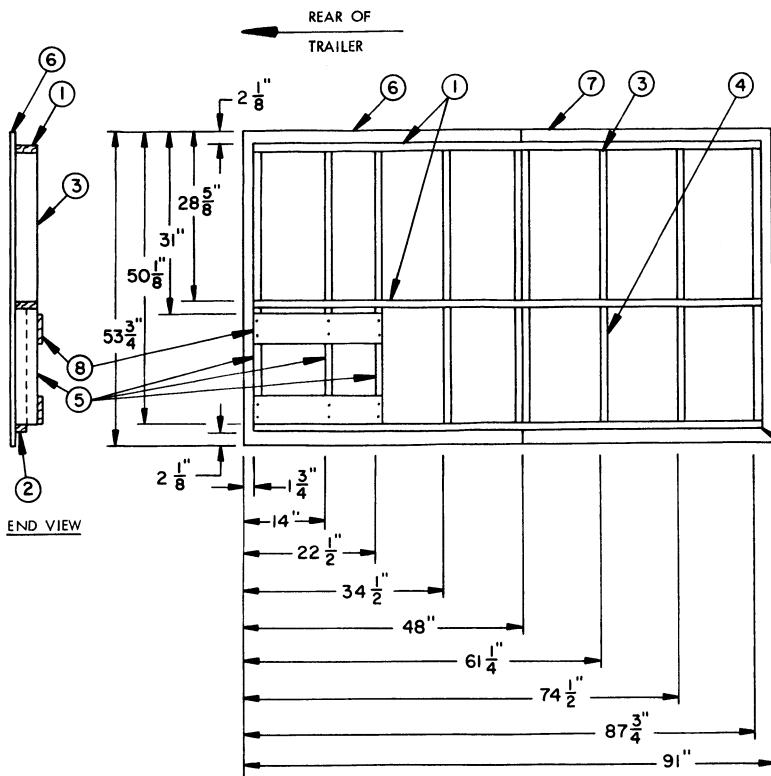
PAINT ---- SEE MIL-STD-193; TABLE V, PAINT FINISHES FOR WOOD. ALSO SEE GENERAL NOTE "E" ON THIS PAGE.

STRAP ---- WEBBING, UNIVERSAL TIEDOWN, NSN 5340-00-980-9277, PN 10900880.

GENERAL NOTES

- A. AUTHORITY: THIS DOCUMENT HAS BEEN PREPARED AND ISSUED IN ACCORDANCE WITH AR 740-1.
- B. EQUIPMENT DATA: THESE PROCEDURES ARE FOR USE WITH TRAILER, BOLSTER, 4-TON, 4-WHEEL, GENERAL PURPOSE, M796, NSN 2330-00-089-3866. FOR FURTHER DESCRIPTION OF TRAILER, REFER TO TM 9-2330-287-14 AND TACOM DRAWING NO. 8750088.
- | | LENGTH | WIDTH | HEIGHT |
|---------------------|----------|-------|--------|
| TRAILER (RETRACTED) | | | |
| WITH CARGO BOX | 210-1/2" | 96" | 89" |
| BOX INTERIOR | 90" | 54" | 46" |
- | | AXLE WEIGHT | LUNETTE WEIGHT | TOTAL WEIGHT |
|---------------------|-------------|----------------|--------------|
| TRAILER (RETRACTED) | 4,140 LBS | 680 LBS | 4,820 LBS |
| CARGO BOX | 780 LBS | 0 LBS | 780 LBS |
| TIEDOWN STRAPS | 25 LBS | 0 LBS | 25 LBS |
| NET PAYLOAD (MAX) | 7,195 LBS | 0 LBS | 7,195 LBS |
| GROSS WEIGHT | 12,140 LBS | 680 LBS | 12,820 LBS |
- C. DIMENSIONAL LUMBER: LUMBER SPECIFIED THROUGHOUT THIS PROCEDURAL DRAWING IS OF NOMINAL SIZE UNLESS OTHERWISE SPECIFIED. FOR EXAMPLE, 2" X 2" MATERIAL IS ACTUALLY 1-1/2" THICK BY 1-1/2" WIDE AND 2" X 4" MATERIAL IS ACTUALLY 1-1/2" THICK BY 3-1/2" WIDE.
- D. NAILING: A STAGGERED NAILING PATTERN WILL BE USED TO THE MAXIMUM EXTENT POSSIBLE, HOWEVER, NO NAILS WILL BE DRIVEN CLOSER THAN 3/4" FROM THE EDGE OR 1" FROM THE END OF A PIECE OF LUMBER.
- E. PAINTING: THE CARGO BOX ASSEMBLIES SHOULD BE PAINTED, WITH A PRIMER AND TOPCOAT, ACCORDING TO SPECIFICATIONS IDENTIFIED BY TABLE V OF MIL-STD-193. SPECIFICATIONS CHOSEN SHOULD BE SIMILAR IN NATURE TO THOSE OF THE TRAILER AND ITS TOWING VEHICLE. FOR EXAMPLE, CAMOUFLAGING MAY BE REQUIRED. (REFERENCE AR 750-58 REGARDING CAMOUFLAGEMENT REQUIREMENTS).
- F. TOLERANCES: UNLESS OTHERWISE SPECIFIED, ALL CONSTRUCTION TOLERANCES ARE ± 1/8".
- G. METRIC CONVERSION: DIMENSIONS WITHIN THIS DOCUMENT ARE EXPRESSED IN INCHES, AND WEIGHTS ARE EXPRESSED IN POUNDS. WHEN NECESSARY THE METRIC EQUIVALENTS MAY BE COMPUTED ON THE BASIS OF ONE INCH EQUALS 25.4MM, AND ONE POUND EQUALS 0.454KG.
- H. HANDLING OF ASSEMBLIES: ALL ASSEMBLIES CAN BE HANDLED AND POSITIONED MANUALLY BY TWO PERSONNEL. ALL ASSEMBLIES CAN BE EASILY REMOVED FOR TRAILER MAINTENANCE PURPOSES OR TO REVERT TRAILER TO ITS GENERAL PURPOSE CONFIGURATION.
- J. ASSEMBLY OF CARGO BOX: ONCE THE FLOOR SECTION HAS BEEN POSITIONED, THE BULKHEADS AND THE SIDEWALLS MAY BE ASSEMBLED TO THE TRAILER IN ANY ORDER, BEFORE OR AFTER LOADING CARGO. THE CARGO BOX MAY BE ACCESSED FROM EITHER END OR FROM EITHER SIDE FOR LOADING PURPOSES. ADDITIONALLY, DUE TO THE CONSTRUCTION CHARACTERISTICS, THE BULKHEADS ARE INTERCHANGEABLE AND THE SIDEWALLS ARE INTERCHANGEABLE.
NOTE: WHEN POSITIONING A SIDEWALL SUBSEQUENT TO POSITIONING BOTH BULKHEADS, THE SIDEWALL MUST BE LIFTED ABOVE THE TOP OF THE BULKHEADS AND SLID DOWN INTO PLACE. REGARDLESS OF THE POSITIONING SEQUENCE, EACH BULKHEAD MAY BE LIFTED ONTO THE TRAILER AND SET INTO PLACE BY USE OF HANDHOLDS. (SEE HANDHOLD DETAIL ON PAGE 5).
- K. APPLICATION OF TIEDOWN STRAPS: WEB STRAP TIEDOWN ASSEMBLIES MUST BE SECURELY HOOKED INTO ANCHORING DEVICES (SHACKLES) ON THE TRAILER AND FIRMLY TENSIONED. EXERCISE CARE DURING STRAP APPLICATION; AVOID TWISTS IN THE STRAP TO THE EXTENT POSSIBLE, BUT ENSURE THERE ARE NO KNOTS IN THE STRAP. ON THE TAKE-UP SPOOL OF RATCHET, ENSURE STRAIGHT LAY OF STRAP WHEN TENSIONING. THE TENSIONED STRAP MUST FORM AT LEAST ONE AND ONE-HALF COMPLETE WRAPS ON THE TAKE-UP SPOOL OF RATCHET. TIE BACK THE LOOSE END OF STRAP AFTER TENSIONING IS COMPLETED (LOOSE END MAY BE FOLDED AND TAPED OR TIED TO THE TENSION STRAP IF TIME PERMITS). METAL PARTS OF A STRAP ASSEMBLY SHOULD BE LOCATED TO AVOID DIRECT CONTACT WITH THE CARGO BOX. OTHER THAN THE CONNECTIONS TO THE ANCHORING DEVICES, METAL PARTS OF A STRAP ASSEMBLY SHOULD NOT CONTACT THE TRAILER OR TRAILER COMPONENTS.
- L. POSITIONING OF SCUFF SLEEVES: ADJUSTABLE SCUFF SLEEVES PROVIDED ON WEB STRAP TIEDOWN ASSEMBLIES WILL BE LOCATED TO PROVIDE A PAD WHERE STRAPS PASS OVER SHARP EDGES.
- M. LOAD DISTRIBUTION: WHENEVER POSSIBLE, BOXES OR PALLET LOADS SHOULD BE EVENLY DISTRIBUTED Laterally AND LONGITUDINALLY WITHIN THE CARGO BOX.
- N. LOADING OF NON-PALLETIZED BOXES: IN PREPARATION FOR REGULATED TRANSPORT, NON-PALLETIZED BOXES SHOULD BE POSITIONED TO FILL OUT THE LAYER (5) AS COMPLETELY AS POSSIBLE. COMBINATION OF BOX POSITIONS (LAYING FLAT, ON EDGE, OR ON END) MAY BE USED TO MINIMIZE VOIDS. REMAINING VOIDS GREATER THAN 1" LONGITUDINALLY OR 1-1/2" Laterally SHALL BE BLOCKED OUT BY RIGID WOODEN FILLERS. SEE PAGES 7 AND 8 FOR DETAILS OF TYPICAL FILLERS. NOTE: FOR CERTAIN NON-PALLETIZED BOXED ITEMS, A MORE OPTIMUM LOADING PATTERN CAN BE ACHIEVED BY UTILIZING THE ADDITIONAL CARGO SPACE BETWEEN THE SUPPORT PIECES OF THE COVER SECTION. THIS CAN BE ACCOMPLISHED BY CAREFULLY POSITIONING BOXES IN THE UPPERMOST LAYER SO THAT THE SUPPORT PIECES FIT BETWEEN THE UPPERMOST ROWS OF BOXES. (MAXIMUM STACKING HEIGHT ALLOWABLE IS 47-1/4" HIGH AND TOTAL USEABLE INTERIOR CARGO SPACE IS 132 CUBIC FEET).
- O. LOADING OF PALLETIZED BOXES: TYPICALLY, TWO PALLETIZED LOADS OF BOXES CAN BE LOADED WITHIN THE CARGO BOX, PROVIDED DIMENSIONAL AND WEIGHT RESTRICTIONS ARE NOT EXCEEDED. IN PREPARATION FOR REGULATED TRANSPORT, VOIDS GREATER THAN 1" LONGITUDINALLY OR 1-1/2" Laterally SHALL BE BLOCKED OUT BY RIGID WOODEN FILLERS AND/OR BLOCKING ASSEMBLIES. SEE PAGES 7 AND 8 FOR DETAILS OF TYPICAL FILLERS. AS AN ALTERNATIVE, ADDITIONAL NON-PALLETIZED BOXES MAY BE POSITIONED AROUND THE PALLETIZED BOXES TO FILL ANY VOID IN THE LOAD.

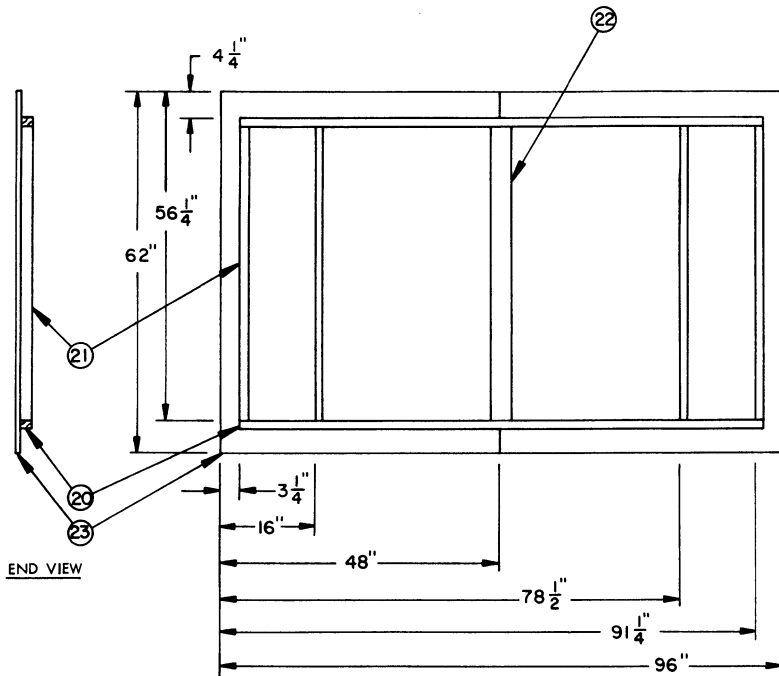
(CONTINUED ON PAGE 2)



KEY NUMBERS (FLOOR)

- ① LONGITUDINAL SUPPORT, 2" X 4" X 87-1/2" (2 REQD). NAIL TO THE LATERAL SUPPORTS, PIECES MARKED ③, W/2-10d NAILS PER JOINT.
- ② LONGITUDINAL SUPPORT, 2" X 2" X 87-1/2" (1 REQD). NAIL TO THE LATERAL SUPPORTS, PIECES MARKED ④ AND ⑤, W/1-10d NAIL PER JOINT.
- ③ LATERAL SUPPORT, 2" X 4" X 25" (9 REQD).
- ④ LATERAL SUPPORT, 2" X 2" X 20" (6 REQD). TOENAIL TO THE MIDDLE LONGITUDINAL SUPPORT, PIECE MARKED ①, W/1-10d NAIL PER JOINT.
- ⑤ LATERAL SUPPORT, 2" X 4" X 20" (3 REQD). TOENAIL TO THE MIDDLE LONGITUDINAL SUPPORT, PIECE MARKED ①, W/2-10d NAILS PER JOINT.
- ⑥ PLYWOOD SHEATHING, 3/4" X 48" X 53-3/4" (1 REQD). NAIL TO THE SUPPORTS; PIECES MARKED ①, ②, ③, ④, AND ⑤; W/1-6d NAIL EVERY 8".
- ⑦ PLYWOOD SHEATHING, 3/4" X 43" X 53-3/4" (1 REQD). NAIL TO THE SUPPORTS; PIECES MARKED ①, ②, ③, AND ④ W/1-6d NAIL EVERY 8".
- ⑧ PLYWOOD SUPPORT FILLER, 3/4" X 4-7/8" X 22-1/4" (2 REQD). NAIL TO THE SUPPORTS PIECES MARKED ⑤, W/2-6d NAILS PER JOINT AS SHOWN

FLOOR
(APPROX 138 LBS)

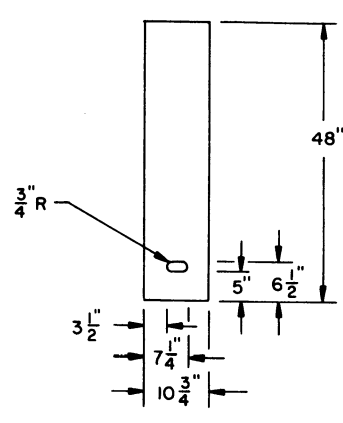
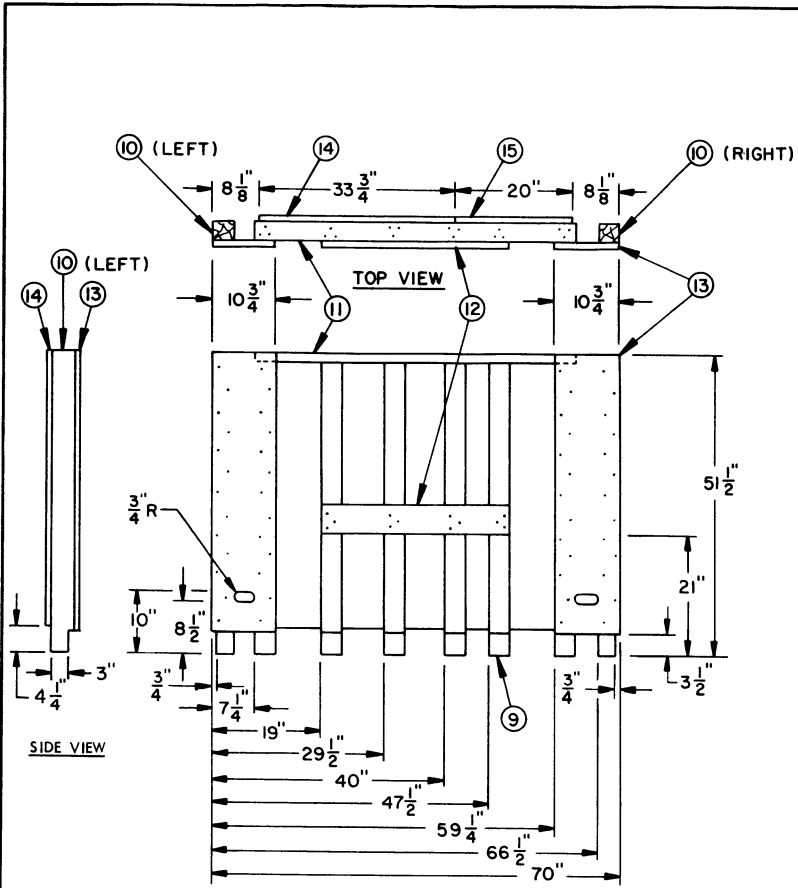


KEY NUMBERS (COVER)

- ⑳ LONGITUDINAL SUPPORT, 2" X 2" X 89-1/2" (2 REQD). NAIL TO THE LATERAL SUPPORTS, PIECE MARKED ㉑, W/1-10d NAIL PER JOINT AND TO THE LATERAL SUPPORT, PIECE MARKED ㉒, W/2-10d NAILS.
- ㉑ LATERAL SUPPORTS, 2" X 2" X 50-1/2" (4 REQD).
- ㉒ LATERAL SUPPORTS, 2" X 4" X 50-1/2" (1 REQD).
- ㉓ PLYWOOD SHEATHING, 3/4" X 48" X 62" (2 REQD). NAIL TO THE SUPPORTS; PIECES MARKED ㉑, ㉒, AND ㉓; W/1-6d NAIL EVERY 8". CAULK JOINT FORMED BY THE TWO ADJACENT PIECES OF PLYWOOD SHEATHING PRIOR TO NAILING.

COVER
(APPROX 114 LBS)

CONSTRUCTION DETAILS

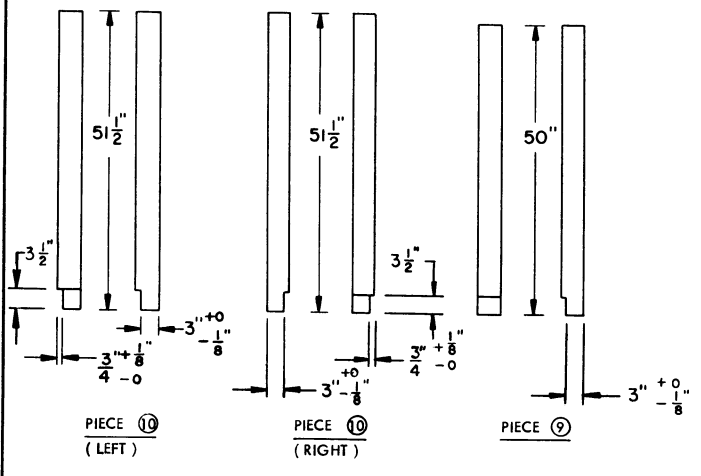


REAR OR FRONT VIEW
BULKHEAD
 (APPROX 152 LBS)

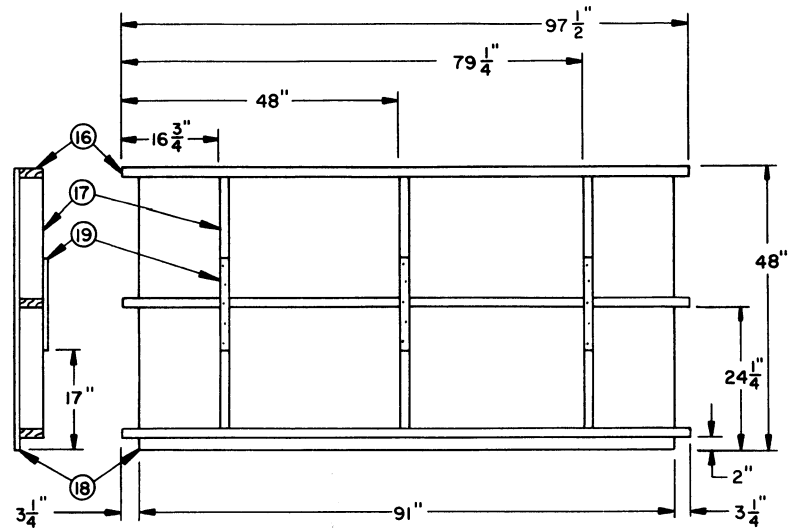
KEY NUMBERS (BULKHEAD)

- ⑨ INSIDE VERTICAL POST, 4" X 4" X 50" (6 REQD). SEE DETAILS ON THIS PAGE FOR SPECIAL CUTTING SPECIFICATIONS.
- ⑩ OUTSIDE VERTICAL POST, 4" X 4" X 51-1/2" (2 REQD, ONE LEFT HAND AND ONE RIGHT). SEE DETAILS ON THIS PAGE FOR SPECIAL CUTTING SPECIFICATIONS.
- ⑪ UPPER STIFFENER, 2" X 4" X 55-1/2" (1 REQD), NAIL TO THE INSIDE VERTICAL POSTS, PIECE MARKED ⑨, W/3-10d NAILS PER JOINT AS SHOWN.
- ⑫ PLYWOOD STIFFENER, 3/4" X 4-7/8" X 32" (1 REQD). NAIL TO THE INSIDE VERTICAL POSTS, PIECE MARKED ⑨, W/3-6d NAILS PER JOINT AS SHOWN.
- ⑬ PLYWOOD TIE PIECE, 3/4" X 48" X 10-3/4" (2 REQD). NAIL TO THE VERTICAL POSTS, PIECES MARKED ⑨ AND ⑩, W/1-6d NAIL EVERY 4" AS SHOWN. SEE HANDHOLD DETAIL ON THIS PAGE FOR SPECIAL CUTTING SPECIFICATIONS.
- ⑭ PLYWOOD SHEATHING, 3/4" X 47-1/4" X 33-3/4" (1 REQD). NAIL TO THE INSIDE VERTICAL POSTS, PIECE MARKED ⑨, AND THE UPPER STIFFENER, PIECE MARKED ⑪, W/1-6d NAIL EVERY 4".
- ⑮ PLYWOOD SHEATHING, 3/4" X 47-1/4" X 20" (1 REQD). NAIL TO THE INSIDE VERTICAL POSTS, PIECE MARKED ⑨, AND THE UPPER STIFFENER, PIECE MARKED ⑪, W/1-6d NAIL EVERY 4".

REAR OR FRONT VIEW SIDE VIEW SIDE VIEW REAR OR FRONT VIEW REAR OR FRONT VIEW SIDE VIEW



CONSTRUCTION DETAILS



END VIEW

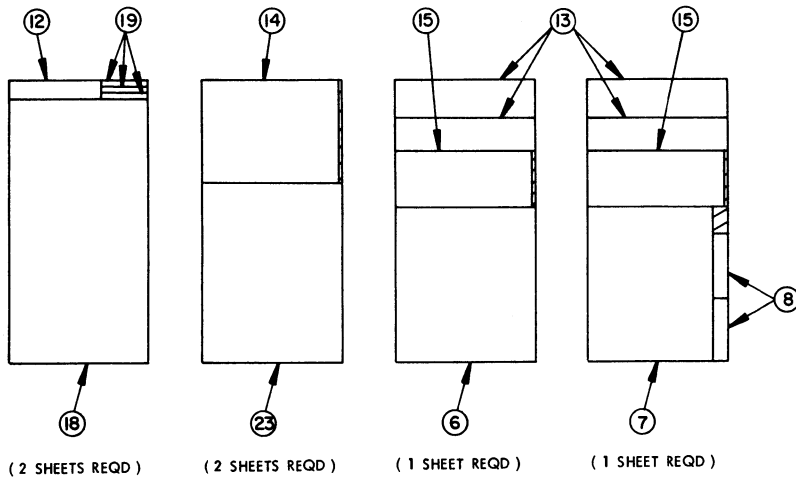
SIDE VIEW

SIDEWALL

(APPROX 112 LBS)

KEY NUMBERS (SIDEWALL)

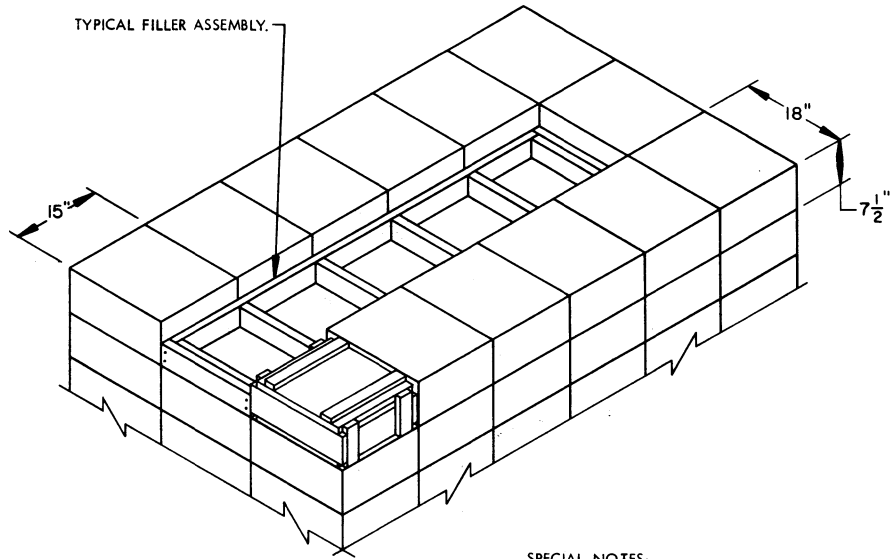
- ①⑥ HORIZONTAL BEAM, 2" X 4" X 97-1/2" (3 REQD). NAIL EACH HORIZONTAL BEAM TO THREE VERTICAL SUPPORTS, PIECES MARKED ①⑦, W/2-10d NAILS PER JOINT.
- ①⑦ VERTICAL SUPPORT, 2" X 4" X 20-3/4" (6 REQD). TOENAIL THREE OF THE VERTICAL SUPPORTS TO THE MIDDLE HORIZONTAL BEAM W/2-10d NAILS PER JOINT.
- ①⑧ PLYWOOD SHEATHING, 3/4" X 48" X 91" (1 REQD). NAIL TO THE HORIZONTAL BEAMS, PIECES MARKED ①⑨, AND THE VERTICAL SUPPORTS, PIECES MARKED ①⑦, W/1-6d NAIL EVERY 8".
- ①⑨ PLYWOOD TIE PIECE, 3/4" X 1-1/2" X 15-7/8" (3 REQD). NAIL TO THE VERTICAL SUPPORTS, PIECES MARKED ①⑦, W/2-6d NAILS PER JOINT AND TO THE MIDDLE HORIZONTAL BEAM, PIECE MARKED ①⑥, W/1-6d NAIL PER JOINT AS SHOWN.



PLYWOOD CUTTING PATTERNS

(Z INDICATES SCRAP MATERIAL)

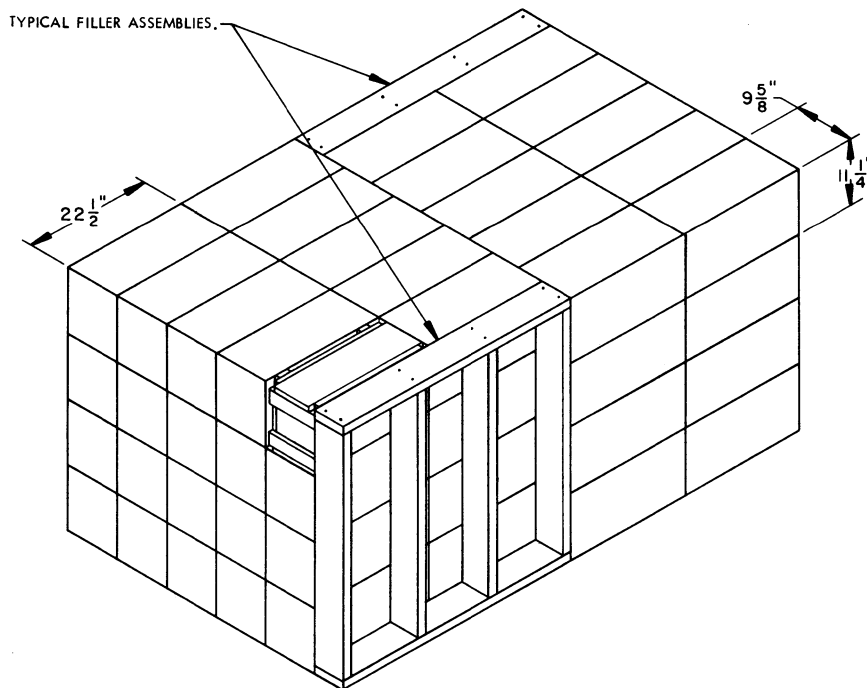
NOTE: SEE BILL OF MATERIAL ON PAGE 3 FOR ACTUAL DIMENSIONS OF PLYWOOD PIECES TO BE CUT.



TYPICAL TOP LAYER FILLER
(NON-PALLETIZED BOXES SHOWN)

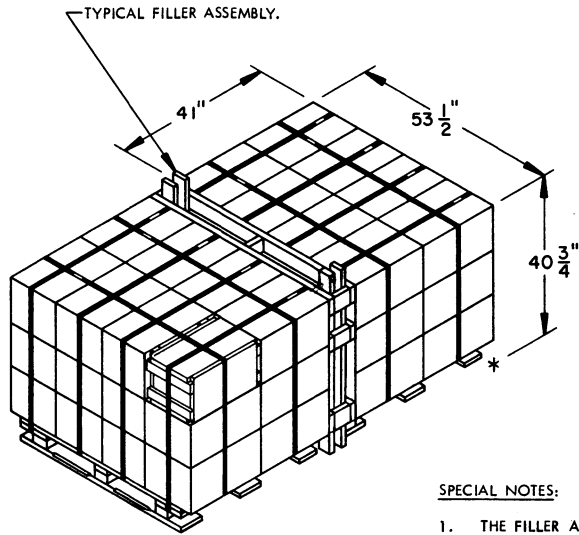
SPECIAL NOTES:

1. THE FILLER ASSEMBLIES SHOWN ON THIS PAGE ARE TYPICAL IN CONSTRUCTION, AND ARE SHOWN AS THEY ARE TO PROVIDE GENERAL GUIDANCE TO USERS WHO HAVE TO LOAD THE CARGO BOX.
2. FILLER ASSEMBLIES WILL BE CONSTRUCTED TO SATISFY THE REQUIREMENTS OF THE LOAD BEING LOADED. SEE GENERAL NOTE "N" ON PAGE 3 FOR THESE REQUIREMENTS.



TYPICAL LATERAL VOID FILLER
(NON-PALLETIZED BOXES SHOWN)

TYPICAL FILLER DETAILS

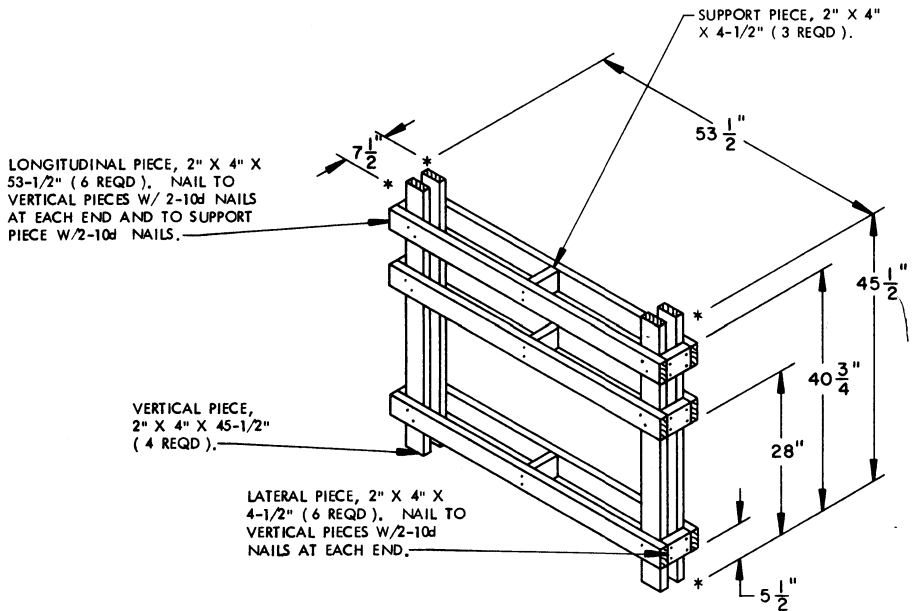


TYPICAL LONGITUDINAL VOID FILLER

(PALLETIZED BOXES SHOWN)

SPECIAL NOTES:

1. THE FILLER ASSEMBLY SHOWN ON THIS PAGE IS TYPICAL IN CONSTRUCTION, AND IS SHOWN AS IT IS TO PROVIDE GENERAL GUIDANCE TO USERS WHO HAVE TO LOAD THE CARGO BOX.
2. A FILLER ASSEMBLY WILL BE CONSTRUCTED TO SATISFY THE REQUIREMENTS OF THE LOAD BEING LOADED. SEE GENERAL NOTE "O" ON PAGE 3 FOR THESE REQUIREMENTS.



DETAIL OF TYPICAL LONGITUDINAL VOID FILLER

(SEE SPECIAL NOTES ABOVE)