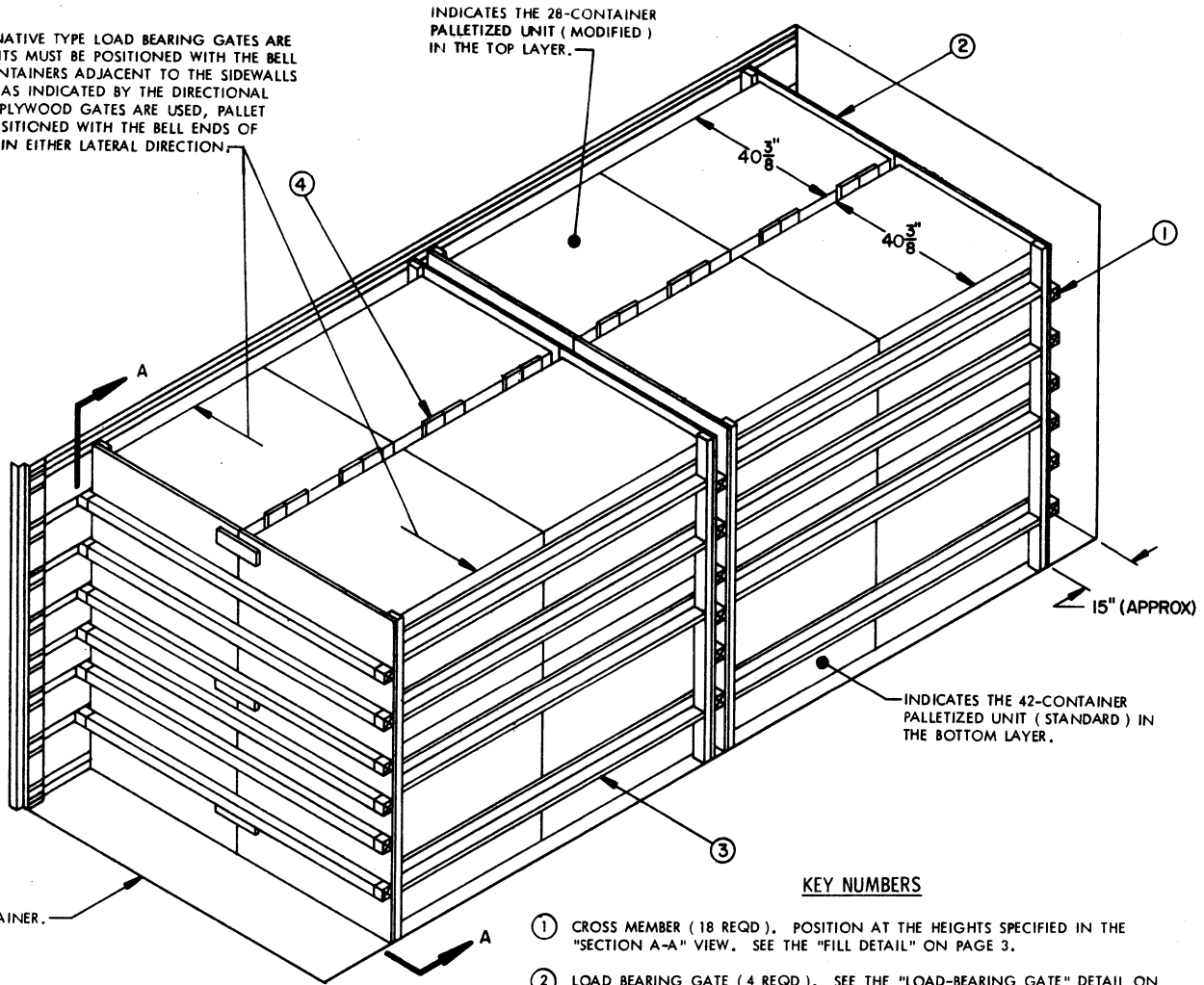


REVISIONS

- REVISION NO. 1, DATED DECEMBER 1975, CONSISTS OF:
1. CHANGING THE ALTERNATIVE LOAD BEARING GATE ON PAGE 4.
 2. ADDING PIECE MARKED (3), AND ADJUSTING THE BILL OF MATERIAL AND THE LOAD AS SHOWN TO SUIT.

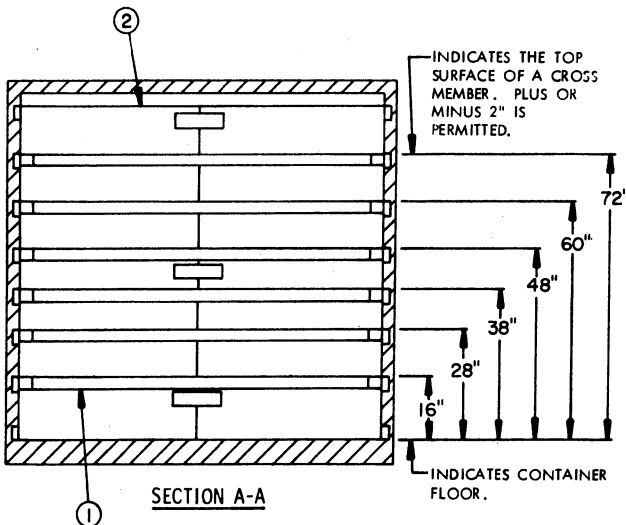
WHEN THE ALTERNATIVE TYPE LOAD BEARING GATES ARE USED, PALLET UNITS MUST BE POSITIONED WITH THE BELL ENDS OF THE CONTAINERS ADJACENT TO THE SIDEWALLS OF THE MILVAN, AS INDICATED BY THE DIRECTIONAL ARROWS. WHEN PLYWOOD GATES ARE USED, PALLET UNITS MAY BE POSITIONED WITH THE BELL ENDS OF THE CONTAINERS IN EITHER LATERAL DIRECTION.



ISOMETRIC VIEW

KEY NUMBERS

- 1 CROSS MEMBER (18 REQD). POSITION AT THE HEIGHTS SPECIFIED IN THE "SECTION A-A" VIEW. SEE THE "FILL DETAIL" ON PAGE 3.
- 2 LOAD BEARING GATE (4 REQD). SEE THE "LOAD-BEARING GATE" DETAIL ON PAGE 4.
- 3 SIDE FILL GATE (4 REQD). SEE THE "SIDE FILL GATE" DETAIL ON PAGE 4. WIRE TIE THE SIDE FILL GATES TO THE BELT RAILS WITH TWO PIECES OF NO. 14 GAGE WIRE 18" LONG.
- 4 CENTER FILL GATE (4 REQD). SEE THE "CENTER FILL GATE" DETAIL ON PAGE 4. SEE GENERAL NOTE "G" ON PAGE 3.
- 5 RISER, 1" X 6" X 42" (8 REQD). NAIL TO THE ADJACENT BATTENS W/1-10d NAIL AT EACH JOINT. SEE THE "PALLET UNIT (STANDARD)" DETAILS ON PAGES 5 AND 6 FOR LOCATION GUIDANCE. SEE GENERAL NOTE "L" ON PAGE 3.



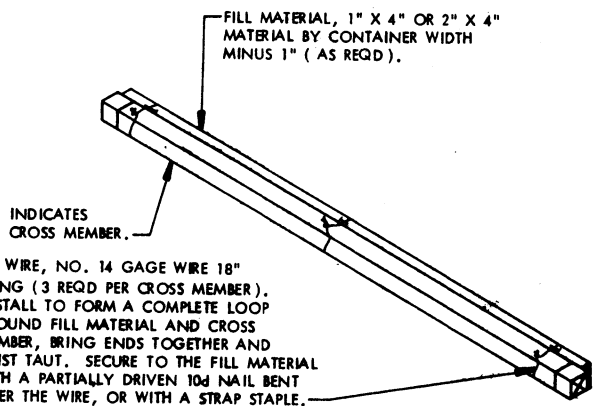
REDUCED-LOAD PROVISIONS

WHEN A CONTAINER IS TO BE LOADED WITH A REDUCED QUANTITY OF LADING UNITS, THE LENGTHWISE CENTER OF GRAVITY OF A LOAD MUST BE WITHIN 12", IN EITHER DIRECTION, OF THE MIDPOINT IN A MILVAN, AND THE FOLLOWING CRITERIA WILL APPLY:

- A. IF A LOAD IS REDUCED BY ONLY A SMALL AMOUNT, LADING UNITS NORMALLY MAY BE ELIMINATED FROM THE REAR OF THE LOAD. SEE US ARMY MATERIEL COMMAND DRAWING NO. 19-48-4106-15PM1001 FOR ADDITIONAL GUIDANCE.
- B. IF A LOAD IS REDUCED BY A LARGE AMOUNT, LADING UNITS SHOULD BE ELIMINATED FROM LOCATIONS WITHIN THE LOAD OR LADING UNITS SHOULD BE ELIMINATED AS REQUIRED AND THE TOTAL LOAD SHIFTED AS NECESSARY FORE OR AFT, TO ACHIEVE A SYMMETRICAL WEIGHT DISTRIBUTION. THE DEPICTED PROCEDURES WILL BE FOLLOWED AS CLOSELY AS POSSIBLE, MAKING ONLY THOSE ADJUSTMENTS TO THE DUNNAGE WHICH ARE REQUIRED TO ACCOMMODATE THE NUMBER OF UNITS TO BE SHIPPED.
- C. COMBINATIONS OF THE VARIOUS DEPICTED LOADING PATTERNS MAY BE USED TO SATISFY THE NUMBER OF UNITS TO BE SHIPPED. HOWEVER, EACH LOAD BAY WILL BE INDEPENDENTLY BLOCKED AS A SEPARATE LOAD BAY IN ACCORDANCE WITH THE DEPICTED PROCEDURES FOR THAT SPECIFIC LOADING PATTERN.

GENERAL NOTES

- A. THIS DOCUMENT HAS BEEN PREPARED AND ISSUED IN ACCORDANCE WITH AR 740-1, AND AUGMENTS TM 743-200-1 (CHAPTER 5).
- B. THE SPECIFIED OUTLOADING PROCEDURE IS APPLICABLE TO A MIXED LOAD OF 42-CONTAINER AND 28-CONTAINER PALLET UNITS OF PROPELLING CHARGE PACKED IN THE M14 SERIES CYLINDRICAL METAL CONTAINER. SUBSEQUENT REFERENCE TO PALLET UNIT MEANS THE PALLETIZED UNIT WITH AMMUNITION ITEMS. SEE PAGES 5 AND 6 OF THIS DRAWING AND US ARMY MATERIEL COMMAND DRAWING NO. 19-48-4106-15PM1001 FOR DETAIL OF THE PALLETIZED UNIT. **CAUTION:** REGARDLESS OF THE QUANTITY OF UNITS TO BE SHIPPED, THE "MAXIMUM GROSS WEIGHT" OF 44,800 POUNDS MUST NOT BE EXCEEDED.
- C. THE LOAD AS SHOWN IS BASED ON A 20' LONG BY 8' WIDE BY 8' HIGH MILVAN CONTAINER WITH INSIDE DIMENSIONS OF 19'-4" LONG BY 92" WIDE BY 87" HIGH. THE LOAD IS DESIGNED FOR TRAILER/CONTAINER-ON-FLAT-CAR (T/COFC) SHIPMENT.
- D. THE SPECIFIED OUTLOADING PROCEDURES ARE FOR CONTAINERS EQUIPPED WITH SELF-CONTAINED MECHANICAL BRACING DEVICES AS DESCRIBED WITHIN BUREAU OF EXPLOSIVES PAMPHLET 6C. CROSS MEMBER ATTACHMENT FACILITIES WITHIN THESE CONTAINERS MUST PROVIDE FOR THE INSTALLATION OF LOAD BLOCKING CROSS MEMBERS AT THE HEIGHTS SPECIFIED. THE HEIGHT DIMENSIONS SPECIFIED WITHIN THIS DRAWING FOR THE INSTALLATION OF CROSS MEMBERS CONFORM WITH BUREAU OF EXPLOSIVES PAMPHLET 6C, WITH THE EXCEPTION THAT TWO (2) ADDITIONAL BELT RAILS HAVE BEEN SHOWN; ONE AT 72" AND ONE AT 83" HEIGHT FROM THE CONTAINER FLOOR. VOIDS LENGTHWISE WITHIN THE LOAD MUST BE HELD TO A MINIMUM. CROSS MEMBERS MUST BE PLACED AGAINST THE LADING AS TIGHTLY AS THE HOLE SPACING IN THE CROSS MEMBER ATTACHMENT FACILITY PERMITS. EACH CROSS MEMBER WILL BE INSTALLED WITH THE ENDS ATTACHED AS NEARLY AS POSSIBLE IN "MATED" POSITIONS (AT EQUAL HEIGHTS, AND AT EQUAL DISTANCES FROM THE END OF THE CONTAINER). CROSS MEMBERS IN EMPTY CONTAINERS AND THOSE NOT USED IN LOADED CONTAINERS MUST BE FASTENED INTO BELT RAILS FOR SHIPMENT. COMPONENTS ASSIGNED TO EACH CONTAINER MUST REMAIN THEREWITH EVEN THOUGH UNUSED DURING SOME SHIPMENTS. SEE THE "FILL DETAIL" AT LEFT FOR THE DUNNAGING METHOD REQUIRED TO ELIMINATE AN EXCESSIVE LENGTHWISE VOID WITHIN A LOAD. THE LOAD BLOCKING COMPONENT DESIGNATED AS "CROSS MEMBER" HEREIN, IS IDENTIFIED AS "BEAM ASSEMBLY" WITHIN TM 55-8115-200-24, DATED SEPTEMBER 1972. THE BEAM ASSEMBLY IS FURTHER IDENTIFIED AS NSN 8115-00-165-6623 (FSN 8115-165-6623).



FILL DETAIL

THIS DETAIL DEPICTS METHOD OF POSITIONING FILL MATERIAL BETWEEN CROSS MEMBER AND LADING, WHEN THE VOID BETWEEN THE TWO IS GREATER THAN ONE INCH (1") FOR LONGITUDINAL BRACING.

(GENERAL NOTES CONTINUED)

- K. IF PLYWOOD IS NOT AVAILABLE OR IF DESIRED, THE LOAD BEARING GATES MAY BE FABRICATED FROM NOMINAL TWO-INCH LUMBER. SEE THE "ALTERNATIVE LOAD BEARING GATE" DETAIL ON PAGE 4, AND THE LEADER NOTE FROM THE DIRECTIONAL ARROWS IN THE ISOMETRIC VIEW ON PAGE 2.
- L. THE RISER, PIECE MARKED (S), IS REQUIRED TO PROVIDE FOR A LEVEL BEARING SURFACE FOR THE UPPER PALLET UNIT OF A STACK. NOTE THAT THIS RISER IS ONLY REQUIRED ON THE 42-CONTAINER PALLETIZED UNIT (STANDARD).

- E. DUNNAGE LUMBER SPECIFIED IS OF A NOMINAL SIZE. FOR EXAMPLE, 1" X 4" MATERIAL IS ACTUALLY 3/4" THICK BY 3-1/2" OR 3-5/8" WIDE AND 2" X 4" MATERIAL IS ACTUALLY 1-1/2" THICK BY 3-1/2" WIDE OR 1-5/8" THICK BY 3-5/8" WIDE.
- F. **CAUTION:** DO NOT NAIL DUNNAGE MATERIAL TO THE CONTAINER WALLS OR FLOOR. ALL NAILING WILL BE WITHIN THE DUNNAGE.
- G. ALTHOUGH A TOTAL OF 1-1/2" (ONE AND ONE-HALF INCHES) OF UNBLOCKED SPACE ACROSS THE WIDTH OF A LOAD BAY IS PERMITTED, LATERAL VOIDS WITHIN THE LOAD ARE TO BE HELD TO A MINIMUM. EXCESSIVE SLACK CAN BE ELIMINATED FROM A LOAD BAY BY LAMINATING ADDITIONAL BEARING PIECES OF APPROPRIATE THICKNESS TO THE BEARING PIECES OF THE CENTER FILL GATE. NAIL EACH ADDITIONAL PIECE TO THE BEARING PIECE W/1 APPROPRIATELY SIZED NAIL EVERY 12".
- H. A STAGGERED NAILING PATTERN WILL BE USED WHEREVER POSSIBLE WHEN NAILS ARE DRIVEN INTO JOINTS OF DUNNAGE ASSEMBLIES OR WHEN LAMINATING DUNNAGE. ADDITIONALLY, THE NAILING PATTERN FOR AN UPPER PIECE OF LAMINATED DUNNAGE WILL BE ADJUSTED AS REQUIRED SO THAT A NAIL FOR THAT PIECE WILL NOT BE DRIVEN THROUGH ONTO OR RIGHT BESIDE A NAIL IN A LOWER PIECE.
- J. PORTIONS OF THE CONTAINER DEPICTED WITHIN THIS DRAWING, SUCH AS ONE OF THE SIDE WALLS, HAVE NOT BEEN SHOWN IN THE LOAD VIEWS FOR CLARITY PURPOSES.

(CONTINUED AT LEFT)

BILL OF MATERIAL		
LUMBER	LINEAR FEET	BOARD FEET
1" X 4"	12	4
1" X 6"	364	182
2" X 4"	222	148
NAILS	NO. REQD	POUNDS
6d (2")	672	4
10d (3")	80	1-1/4
PLYWOOD, 1/2" -----	210 SQ. FT. REQD ----	286 LBS
WIRE, NO. 14 GAGE -----	12' REQD -----	NIL
CROSS MEMBER -----		18 REQD

MATERIAL SPECIFICATIONS

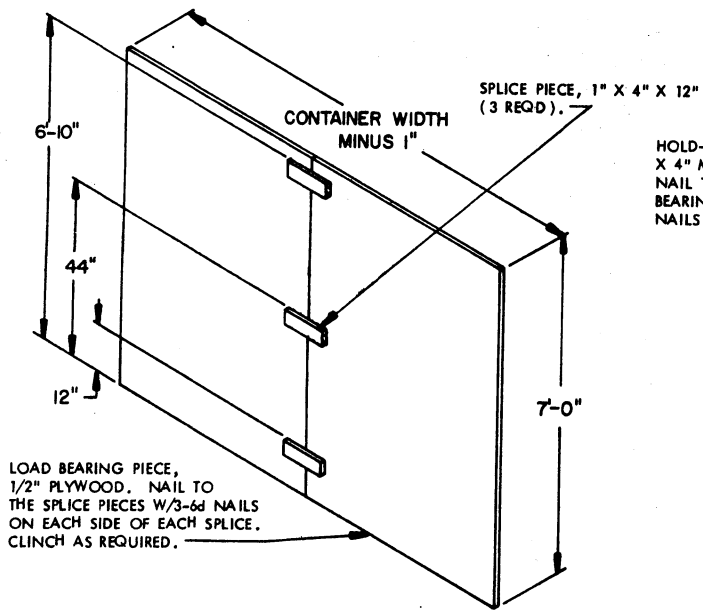
- LUMBER** ----- : SEE TM 743-200-1, DUNNAGE LUMBER; FED SPEC MM-L-751.
- NAILS** ----- : COMMON, CEMENT COATED OR CHEMICALLY ETCHED; FED SPEC FF-N-105. ALT: ANNULAR-RING TYPE NAIL OF THE SAME SIZE.
- WIRE** ----- : FED SPEC QQ-W-461.
- STAPLE, STRAP** ----- : COMMERCIAL GRADE.
- PLYWOOD** ----- : GROUP B OR C, GRADE C-D (EXTERIOR); FED SPEC NN-P-530. IF SPECIFIED GRADE IS NOT AVAILABLE, A BETTER EXTERIOR GRADE MAY BE SUBSTITUTED.

LOAD AS SHOWN (FLAT-DUNNAGE UNITS)

ITEM	QUANTITY	WEIGHT (APPROX)
42-CONTAINER PALLET UNIT -----	8 -----	11,632 LBS
28-CONTAINER PALLET UNIT -----	8 -----	7,840 LBS
DUNNAGE -----		1,127 LBS
CONTAINER -----		5,700 LBS
TOTAL GROSS WEIGHT -----		26,299 LBS

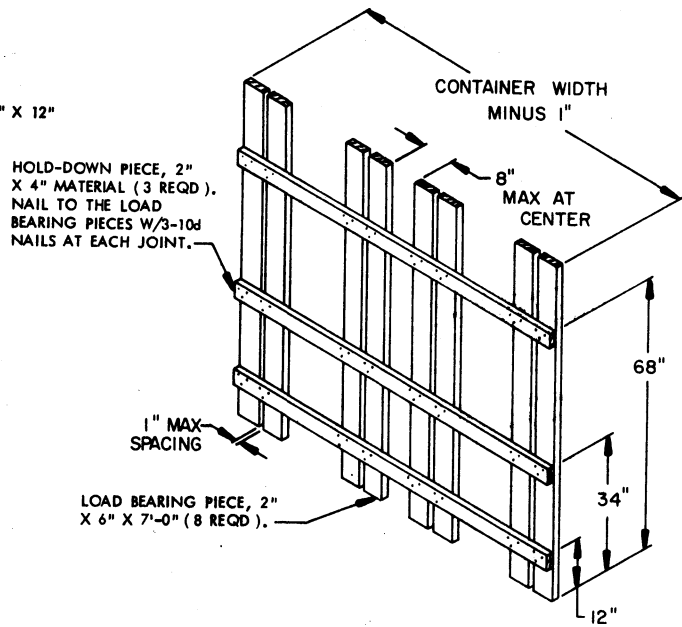
LOAD AS SHOWN (ROUTED-DUNNAGE UNITS) *

ITEM	QUANTITY	WEIGHT (APPROX)
42-CONTAINER PALLET UNIT -----	8 -----	11,440 LBS
28-CONTAINER PALLET UNIT -----	8 -----	7,712 LBS
DUNNAGE -----		1,127 LBS
CONTAINER -----		5,700 LBS
TOTAL GROSS WEIGHT -----		25,979 LBS
* LOAD SHOWN ON PAGE 2.		

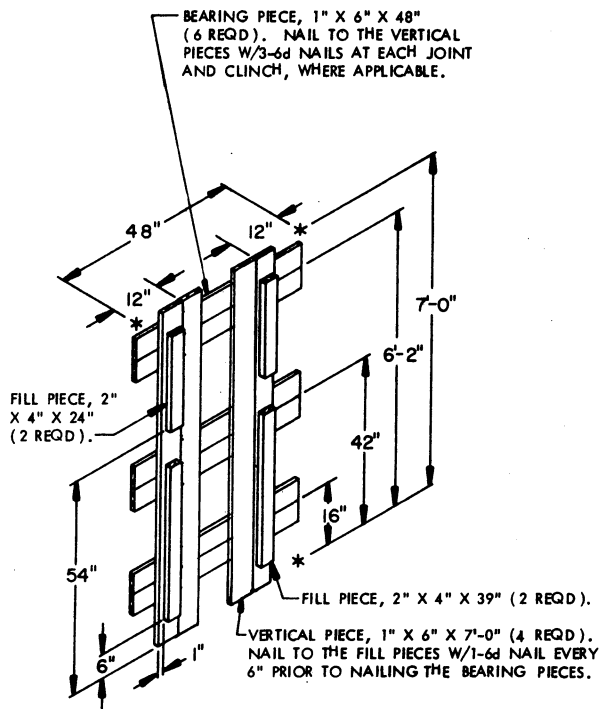


LOAD BEARING GATE

SEE GENERAL NOTE "K" ON PAGE 3.

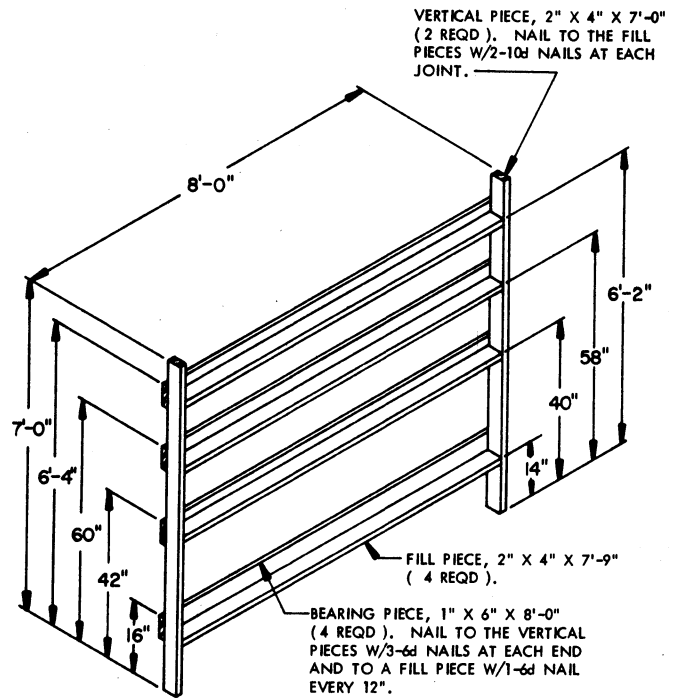


ALTERNATIVE LOAD BEARING GATE

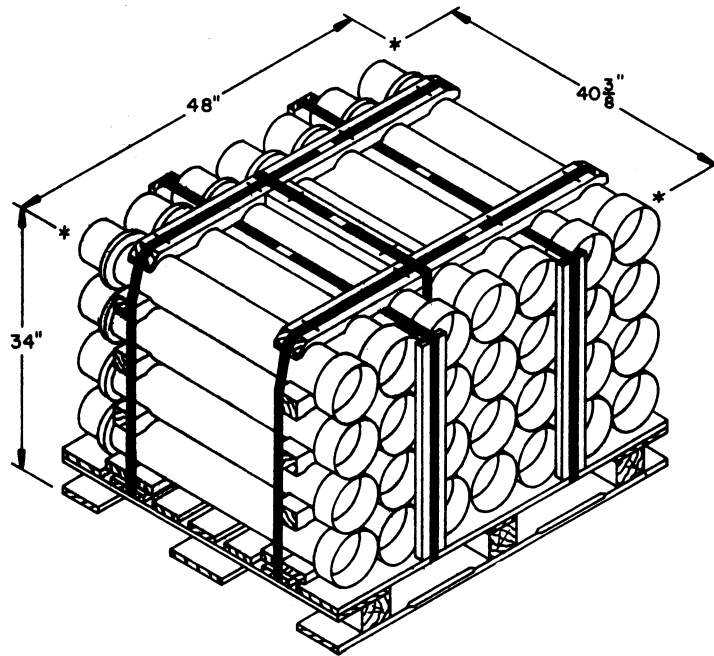


CENTER FILL GATE

SEE GENERAL NOTE "G" ON PAGE 3.



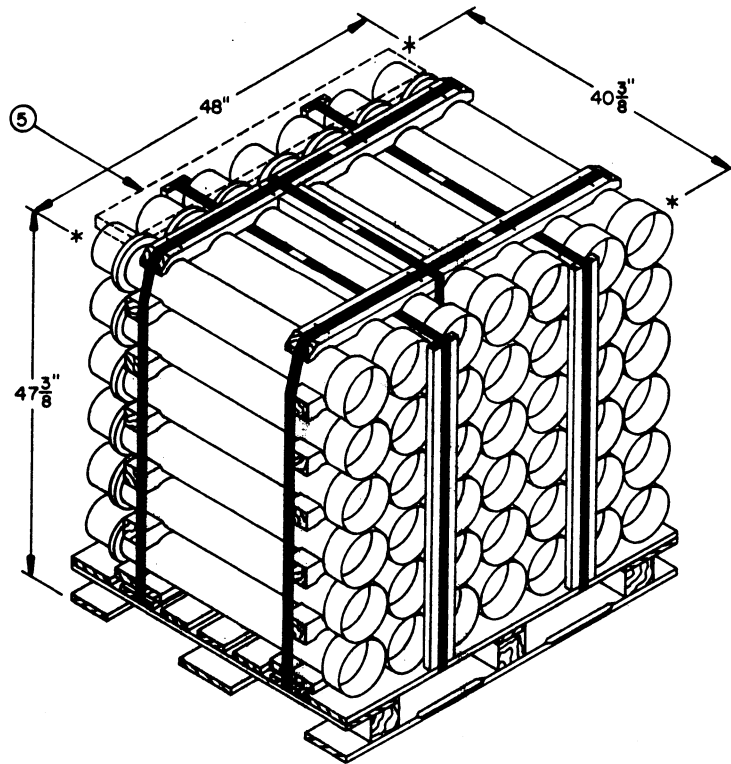
SIDE FILL GATE



PALLET UNIT (MODIFIED)

ROUTED DUNNAGE

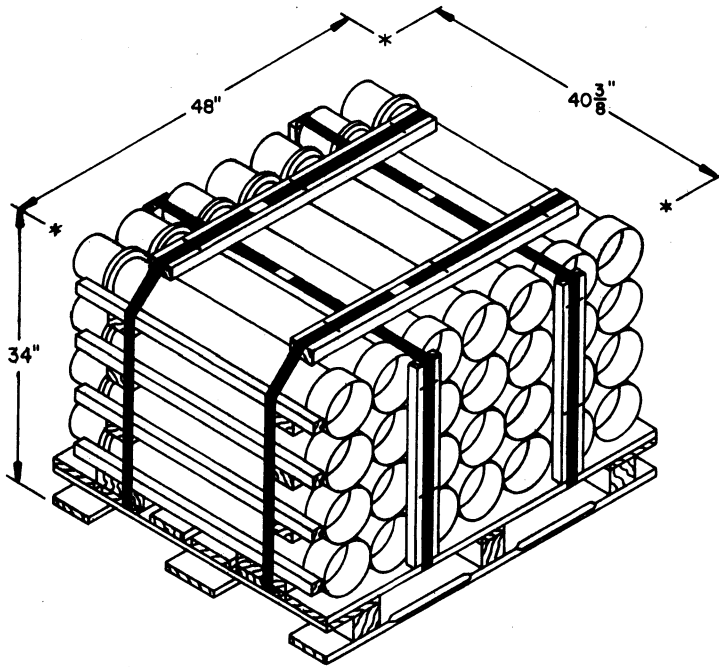
UNIT WEIGHT ----- 964 POUNDS (APPROX)
 CUBE ----- 38.0 CUBIC FEET



PALLET UNIT (STANDARD)

ROUTED DUNNAGE

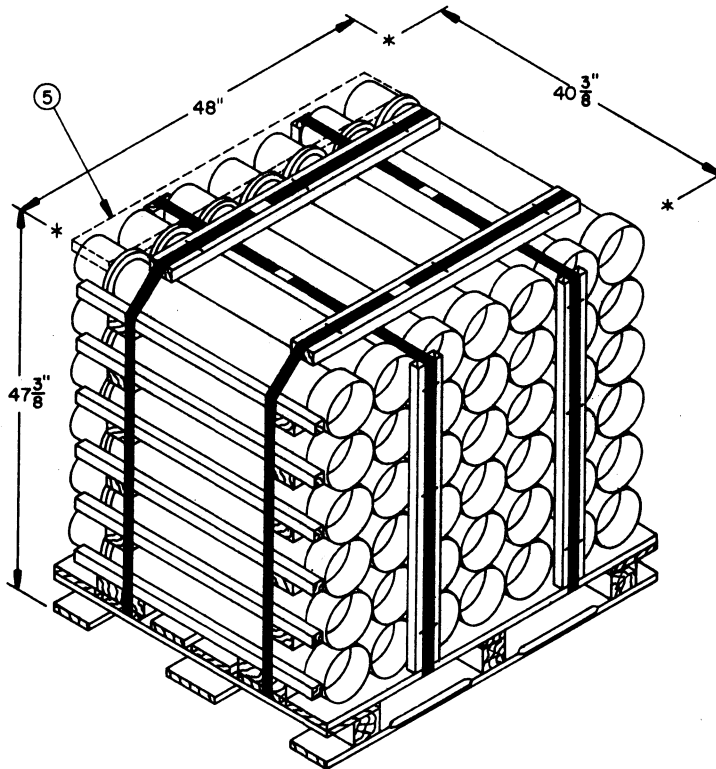
UNIT WEIGHT ----- 1,430 POUNDS (APPROX)
 CUBE ----- 53.1 CUBIC FEET



PALLET UNIT (MODIFIED)

FLAT DUNNAGE

UNIT WEIGHT ----- 980 POUNDS (APPROX)
 CUBE ----- 38.0 CUBIC FEET



PALLET UNIT (STANDARD)

FLAT DUNNAGE

UNIT WEIGHT ----- 1,454 POUNDS (APPROX)
 CUBE ----- 53.1 CUBIC FEET