

WR-51/81
Change Notice 2
11 February 1972

NAVAL ORDNANCE SYSTEMS COMMAND
DEPARTMENT OF THE NAVY
WEAPONS REQUIREMENT, TRUCKLOADING

Bomb, General Purpose, Mk 82 & Mods (500 lb.)

Air Force Unit Load

TPO 1325-294-4152

This notice forms a part of WR-51/81 dated 31 May 1969 and is mandatory for use by establishments of the Naval Systems Command within the Naval Material Command.

Page 1

1. Add in title after "TPO-1325-294-4152", the following "REV. G or H".

Distribution
WR-51 & WR-52
distribution list

Preparing Activity
NAD Earle (NWHL)

WR-51/81
Change Notice 1
12 October 1970

NAVAL ORDNANCE SYSTEMS COMMAND
DEPARTMENT OF THE NAVY
WEAPONS REQUIREMENT, TRUCKLOADING

Bomb, General Purpose Mk 82 & Mods (500 lb)

With Plastic Nose Plug

Air Force Unit Load

This notice forms a part of WR-51/81 dated 31 May 1969 and is mandatory for use by establishments of the Naval Systems Command within the Naval Material Command.

Page 1

1. Delete in title "With Plastic Nose Plugs".
2. Add in title, underneath "Air Force Unit Load", the following line "TPO-1325-294-4152".

Distribution

WR-51 & WR-52
distribution list

Preparing Activity

NAD Earle (NWHL)

Code Ident
10001

Naval Ordnance Systems Command
Department of the Navy

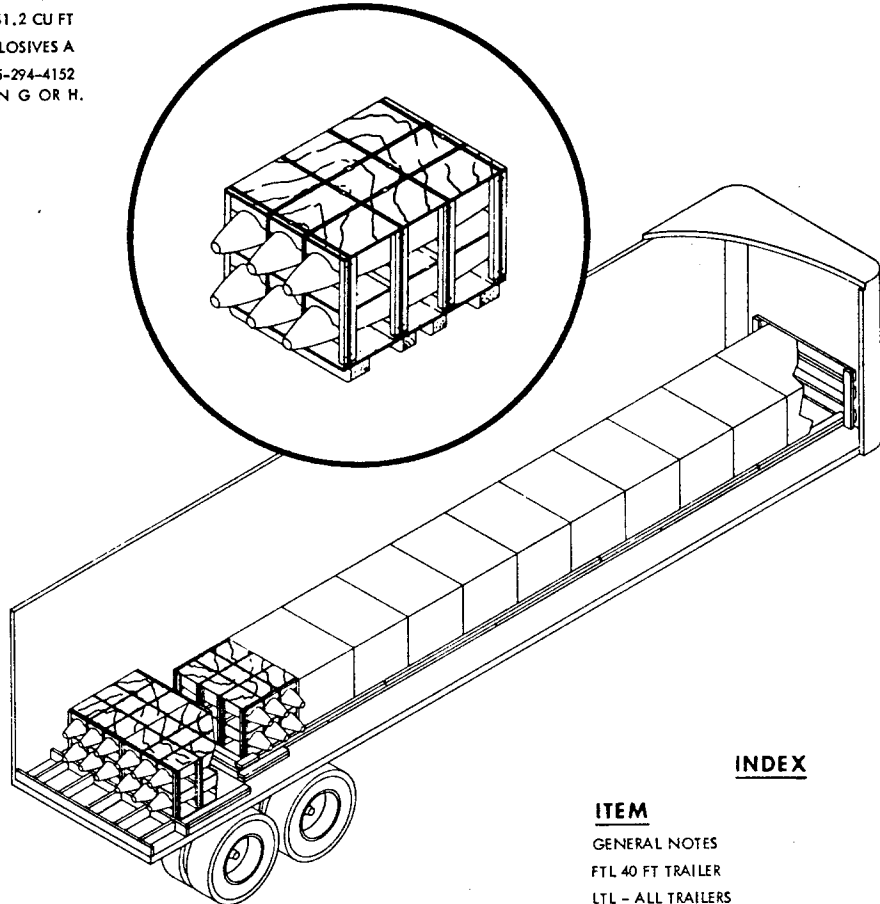
WR-51/81

31 MAY 1969

**WEAPONS REQUIREMENT, TRUCKLOADING
BOMB, GENERAL PURPOSE, MK 82 AND MODS (500 LB)
WITH PLASTIC NOSE PLUGS
AIR FORCE UNIT LOAD**

UNIT LOAD DATA

WEIGHT 3200 LBS
DIMENSIONS 61 3/4 L X 36 W X 32 1/2 H
CUBE 41.2 CU FT
DOT HAZARD CLASSIFICATION .. EXPLOSIVES A
AIR FORCE DWG NO. ... TPO 1325-294-4152
REVISION G OR H.



THIS WR SUPERSEDES
AND CANCELS ALL PRIOR
DRAWINGS COVERING TRUCKLOADING
OF THIS ITEM

UNLESS OTHERWISE SPECIFIED
DIMENSIONS ARE IN INCHES

INDEX

ITEM	PAGE
GENERAL NOTES	2
FTL 40 FT TRAILER	2 & 3
LTL - ALL TRAILERS	5

51/85	TRUCKLOADING (TOFC & COFC)					
NONE	PALLETIZING (SEE UNIT LOAD DATA ABOVE)					
52/74	CARLOADING					
WR NO.	ASSOCIATED PROCESS	REV LTR	REVISION DESCRIPTION	DATE	TDA	SYSCOM APPROVAL

**AUTHORIZED AND RELEASED
FOR HIGHWAY SHIPMENTS
ONLY**

J. E. Kelly NWHL 4/28/69
SIGNATURE TECHNICAL DIRECTING ACTIVITY (TDA) DATE
C. P. Albricht AIR-53442 5/8/69
SIGNATURE (AIR) () SYSCOM, BY DIRECTION DATE

ORIGINATOR *C. P. Troutman* 4/28/69
SIGNATURE

**NAVAL WEAPONS HANDLING LABORATORY
U.S.N.A.D. EARLE, NEW JERSEY**

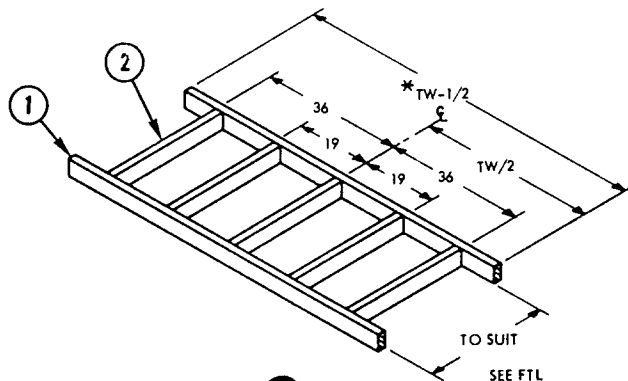
GENERAL NOTES

1. THIS DOCUMENT GIVES DETAILED INSTRUCTIONS FOR TRUCKLOADING 500 LB G.P. BOMBS, MK 82 AND MODS WHEN THE BOMBS ARE PALLETIZED IN ACCORDANCE WITH U.S. AIR FORCE DRAWING NO. TPO 1325-294-4152, REVISION G OR H. NO OTHER PALLET LOADS ARE AUTHORIZED FOR SHIPMENT PER THIS DOCUMENT.
2. DIRECTION OF ARROWS INDICATES NOSE END OF BOMB. UNIT LOADS SHALL BE ORIENTED AS INDICATED.
3. BOMBS DEPICTED HEREIN ARE WITH PLASTIC NOSE PLUGS. HOWEVER, BOMBS WITH METAL NOSE PLUGS MAY BE TRUCKLOADED USING THIS DOCUMENT.
4. PROCEDURES AND PRACTICES DESCRIBED HEREIN ARE INTENDED FOR VAN TYPE TRAILERS. METAL FLOOR TRAILERS SHALL NOT BE USED. TRAILERS WITH PARTIAL METAL FLOORS MAY BE USED PROVIDED THE METAL FLOOR DOES NOT INTERFERE WITH NAILING.
5. GROSS WEIGHT AND AXLE DISTRIBUTION OF WEIGHT IS THE RESPONSIBILITY OF THE CARRIER. THE CARRIER WILL ADVISE THE SHIPPER OF THE APPLICABLE WEIGHT REQUIREMENTS AND THE SHIPPER WILL LOAD ACCORDINGLY.
6. AFTER BLOCKING AND BRACING HAS BEEN INSPECTED, CLOSE AND SEAL TRAILER DOORS AND ATTACH "EXPLOSIVES A" PLACARD TO BOTH SIDES, FRONT, AND BACK OF TRAILER.
7. APPLICABLE MATERIAL SPECIFICATIONS: DUNNAGE LUMBER, MM-L-751; NAILS, FF-N-105 COMMON CEMENT COATED; STRAPPING QQ-S-781 TYPE I CLASS A.
8. FOR GENERAL TRUCKLOADING PROCEDURES REFER TO THE GENERAL TRUCKLOADING WEAPONS REQUIREMENT, WR-51.

FTL 40 FT TRAILER (VAN TYPE)

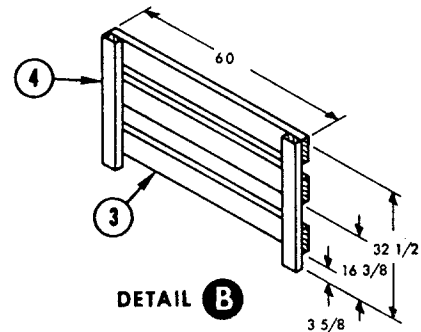
NOTE

1. THE USE OF SLIDING TANDEM TRAILERS IS PREFERRED AND THESE TRAILERS SHOULD BE USED WHENEVER POSSIBLE. TRAILERS WITH AXLES LOCATED IN THE "WESTERN" POSITION (AT EXTREME REAR OF TRAILER) MAY BE USED PROVIDED THE LIGHT WEIGHT OF THE TRACTOR'S DRIVE AXLES DOES NOT EXCEED 11,500 LBS.
2. LENGTH OF STRUTS (ITEM 2) SHALL BE SUCH AS TO CAUSE REAR BLOCKING ASSEMBLY TO BEAR AGAINST THE UNIT LOADS AND TRAILER DOORS WHEN THE DOORS ARE IN THE CLOSED POSITION.

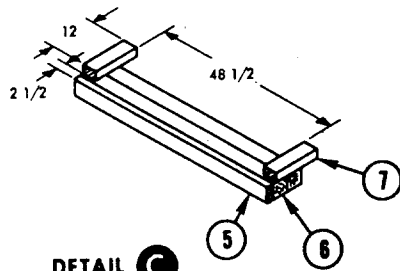


DETAIL A
 REAR BLOCKING ASSEMBLY
 1 REQUIRED
 * TW = TRAILER WIDTH

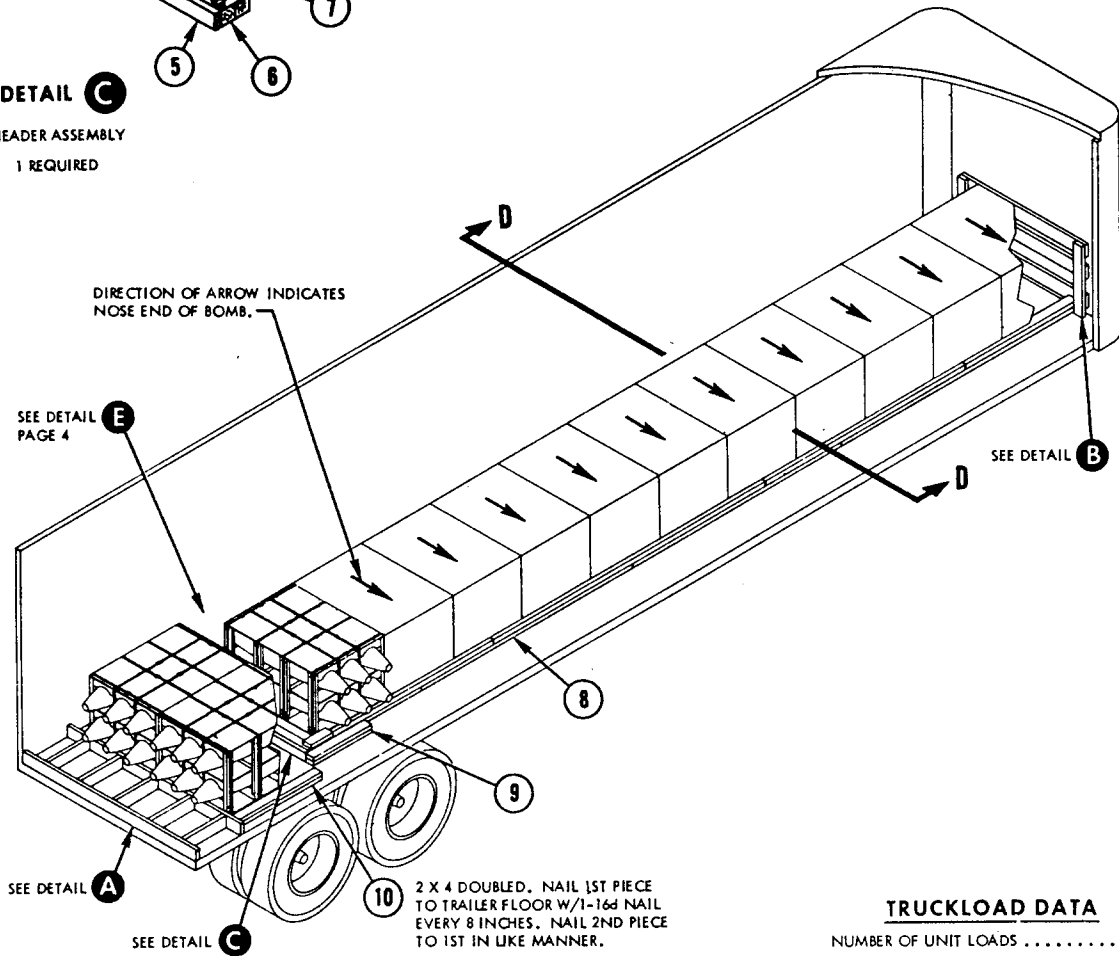
SEE FTL
 NOTE 2



DETAIL B
 FRONT BULKHEAD
 1 REQUIRED

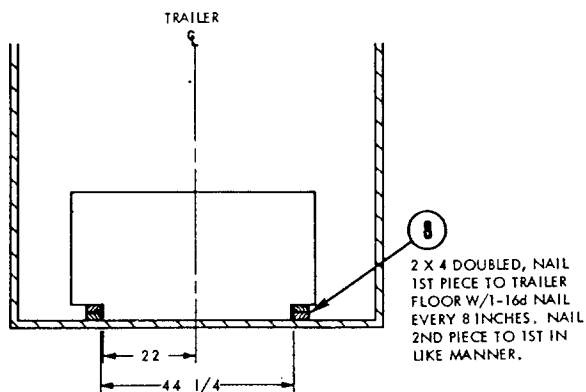


DETAIL C
HEADER ASSEMBLY
 1 REQUIRED



TRUCKLOAD DATA

NUMBER OF UNIT LOADS 13
 WEIGHT (W/O DUNNAGE) 41,600 LBS
 WEIGHT (W/DUNNAGE) 41,980 LBS

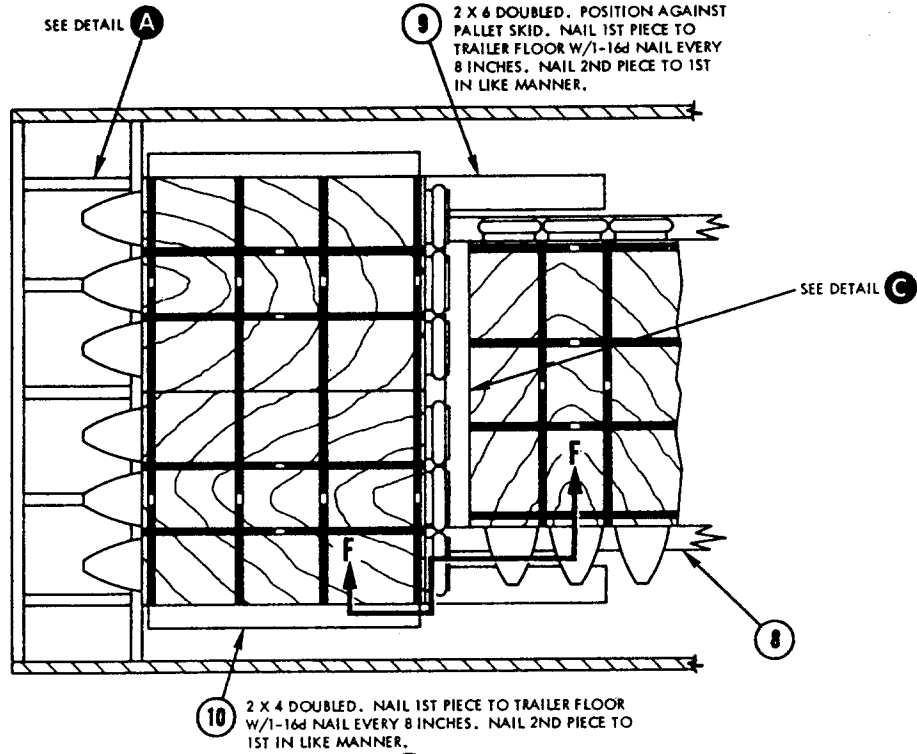


SECTION D-D

*TW = TRAILER WIDTH

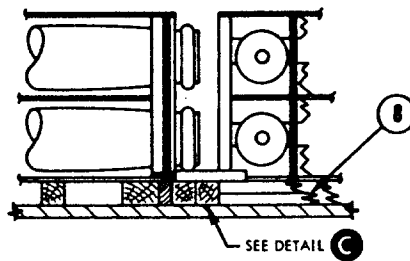
PIECE NO.	DESCRIPTION	SIZE	NO. PCS REQD	NAIL TO	NUMBER	SIZE
10	SLEEPER	2 X 4 X 46	4	SEE DETAIL E		
9	CLEAT	2 X 6 X 30	4	SEE DETAIL E		
8	SLEEPER	2 X 4 X 132 FT (RANDOM LENGTHS)	-	SEE SECTION D-D		
7	CLEAT	2 X 4 X 12	2	6	2 PER JOINT	12d
6	SPACER	4 X 4 X 55 3/4	2	SEE 7	-	-
5	SPACER	2 X 4 X 55 3/4	1	6	6	12d
4	UPRIGHT	2 X 4 X 32 1/2	2	SEE 3	-	-
3	CROSS MEMBER	2 X 6 X 60	3	4	2 PER JOINT	12d
2	STRUT	2 X 6 TO SUIT	5	SEE 1	-	-
1	CROSS MEMBER	2 X 6 X TW*-1/2	2	2	3 PER JOINT	16d
					NAILS	

LIST OF MATERIAL AND NAILING DATA



DETAIL E

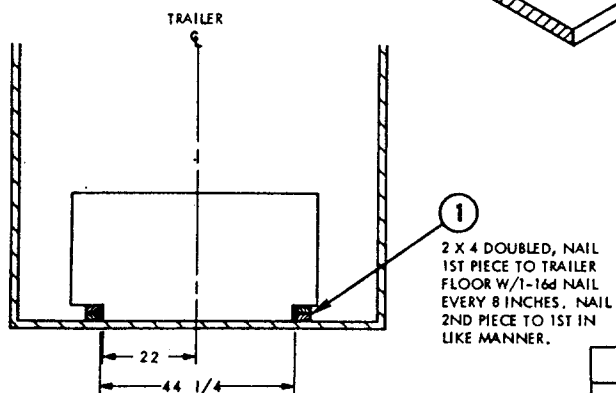
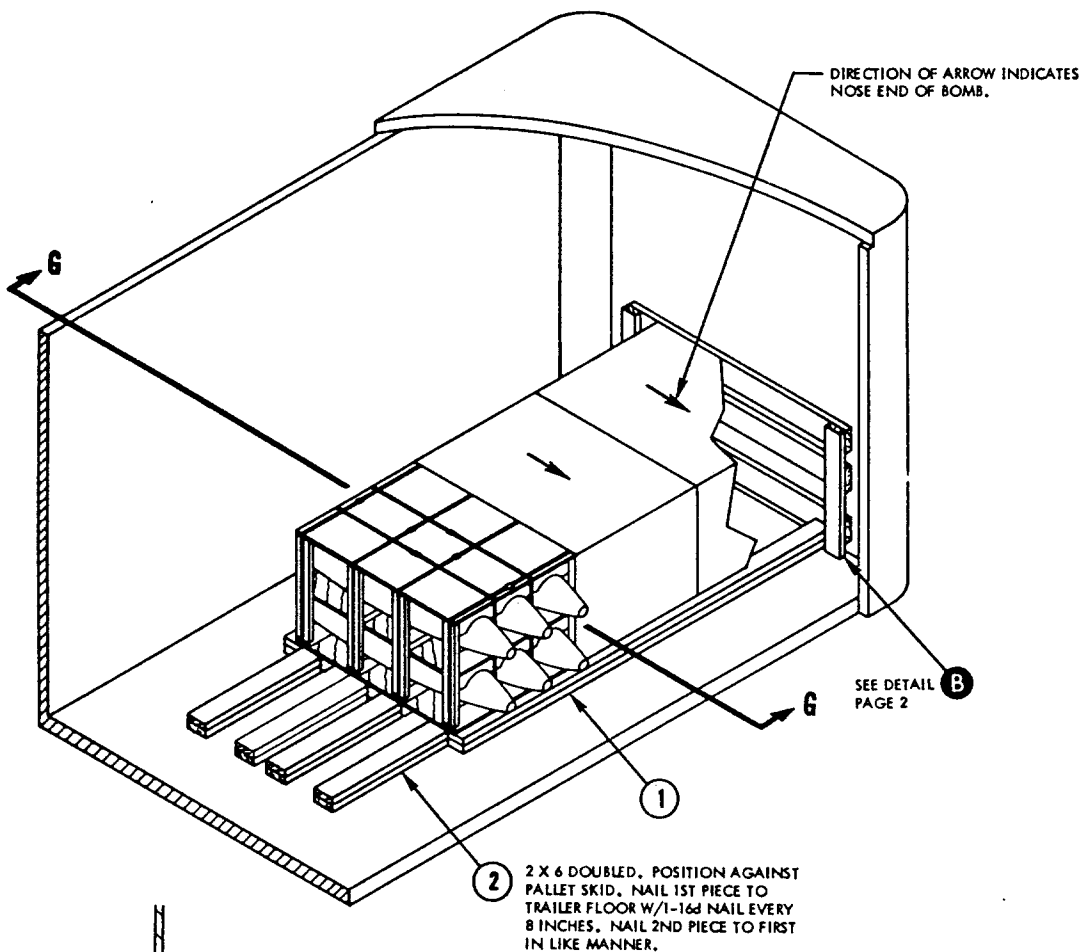
PARTIAL PLAN VIEW



SECTION F-F

LTL ALL LENGTH TRAILERS

1. WHEN REQUIRED TO SHIP LESS-THAN-TRUCKLOAD (LTL), THE SHIPPING REQUIREMENTS WILL DETERMINE THE NUMBER OF UNIT LOADS IN THE TRAILER. THE LOAD PATTERN AND DUNNAGING SHALL BE IN ACCORDANCE WITH THE APPROPRIATE PARTS OF THIS DOCUMENT AND THE GENERAL DOCUMENT.
2. THE LTL SHOWN ON THIS PAGE IS FOR A SHIPMENT OF THREE UNIT LOADS. THIS DOES NOT LIMIT LTL SHIPMENTS TO THIS QUANTITY. THEY MAY CONSIST OF A GREATER OR LESSER NUMBER OF UNIT LOADS.



SECTION G-G

4	UPRIGHT	2 X 4 X 32 1/2	2	SEE 3	-	-
3	CROSS MEMBER	2 X 6 X 60	3	4	2 PER JOINT	12d
2	BACKUP CLEAT	2 X 6 X 30	8	SEE FIELD NOTE		
1	SLEEPER	2 X 4 X 36 FT (RANDOM LENGTHS)		SEE SECTION G-G		
PIECE NO.	DESCRIPTION	SIZE	NO. PCS REQD	NAIL TO	NUMBER NAILS	SIZE
LIST OF MATERIAL AND NAILING DATA						