

Code Ident
10001

Bureau of Naval Weapons
Department of the Navy

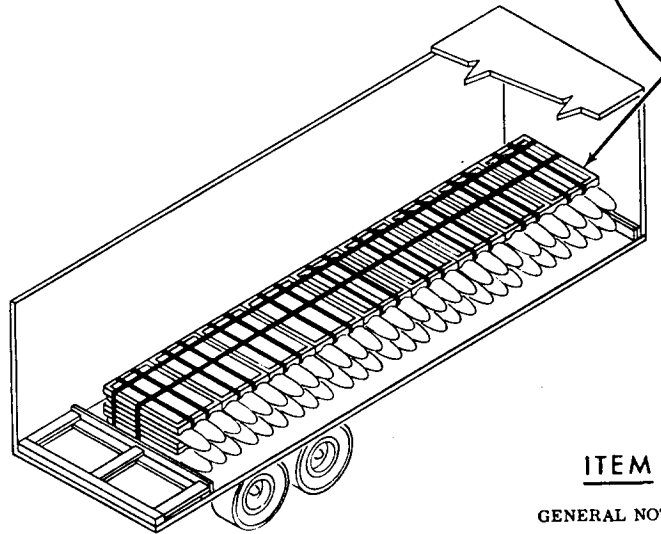
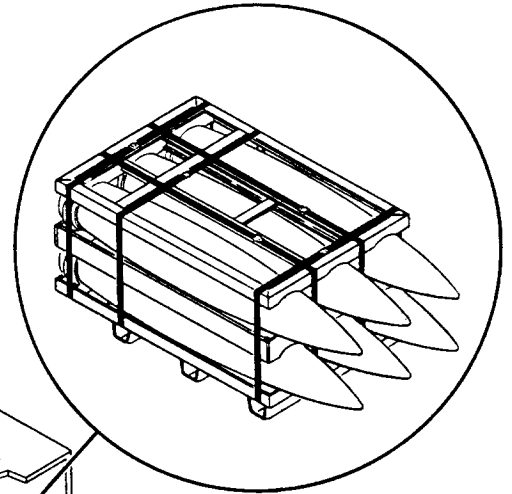
WR51/6
30 July 1964

WEAPONS REQUIREMENT, TRUCKLOADING

FLEET ISSUE UNIT LOAD, MK 36 MOD 0
FOR 500 LB. L. D. BOMB

UNIT LOAD DATA

LENGTH	67-5/16 IN.
WIDTH	33-3/4 IN.
HEIGHT	27-1/16 IN.
WEIGHT (LOADED)	3,177 LBS.
CUBE	35.6 CU. FT.
BUWEPS DWG 1583398	



INDEX

ITEM	PAGE
GENERAL NOTES	2
27, 35, AND 40 FT. TRAILERS (FTL)	2&3
27, 35, AND 40 FT. TRAILERS (LTL)	4&5

UNLESS OTHERWISE SPECIFIED
DIMENSIONS ARE IN INCHES

54/31 PALLETIZING		REV				
WR NO.	ASSOCIATED PROCESS	LTR	REVISION DESCRIPTION	DATE	NWHL	BUWEPS
AUTHORIZED AND RELEASED FOR GENERAL USE			APPROVAL			
J. E. Kelly (SIGNATURE) TECH DIRECTING ACTIVITY (DATE) 6/7/64 M. A. Jambor (SIGNATURE) BUWEPS-RSWI, BY DIRECTION (DATE) 6/12/64		ORIGINATOR <i>J. R. Bauman</i> 6-5-64 SIGNATURE NAVAL WEAPONS HANDLING LABORATORY U. S. N. A. D. EARLE, NEW JERSEY		PAGE 1 OF 5		

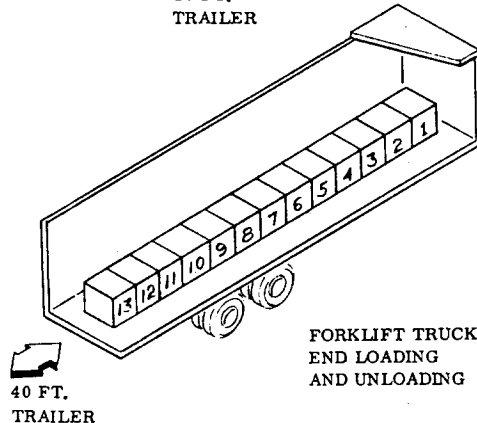
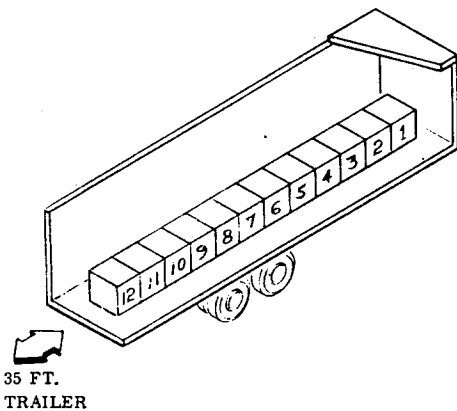
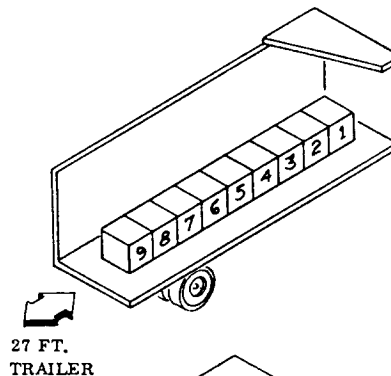
GENERAL NOTES

PURPOSE OF THIS DOCUMENT IS TO PROVIDE DETAILED TRUCKLOADING INSTRUCTIONS APPLICABLE TO THE SHIPMENT OF THE FLEET ISSUE UNIT LOAD MK 36 MOD 0, FOR 500 POUND L.D. BOMBS. METHODS FOR LOADING AND SECURING THE UNIT LOAD FOR SHIPMENT ARE DESCRIBED IN DETAIL. TRAILERS HAVING METAL DECKS MUST HAVE DECK COVERED WITH WOOD FALSE DECKING TO PREVENT SPARKING AND TO PROVIDE A NAILING SURFACE FOR BLOCKING AND BRACING. THE PROCEDURES AND PRACTICES HEREIN ARE INTENDED FOR COMMERCIAL TRAILERS 27, 35, AND 40 FEET LONG AND 8 FEET WIDE AS BEING MOST GENERALLY IN USE, AND ARE ADAPTED TO FULL-TRUCK LOADS (FTL) AND LESS-THAN-TRUCK LOADS (LTL) AS APPLICABLE. THE LOCATION OF THE COMPLETE LOAD SHALL BE SUCH AS TO MEET AXLE LOAD LIMITATIONS. DIMENSIONS INDICATED ARE IN INCHES UNLESS OTHERWISE SPECIFIED. FOR GENERAL TRUCKLOADING PROCEDURES AND REGULATIONS REFER TO THE GENERAL WEAPONS REQUIREMENT. (WR51.)

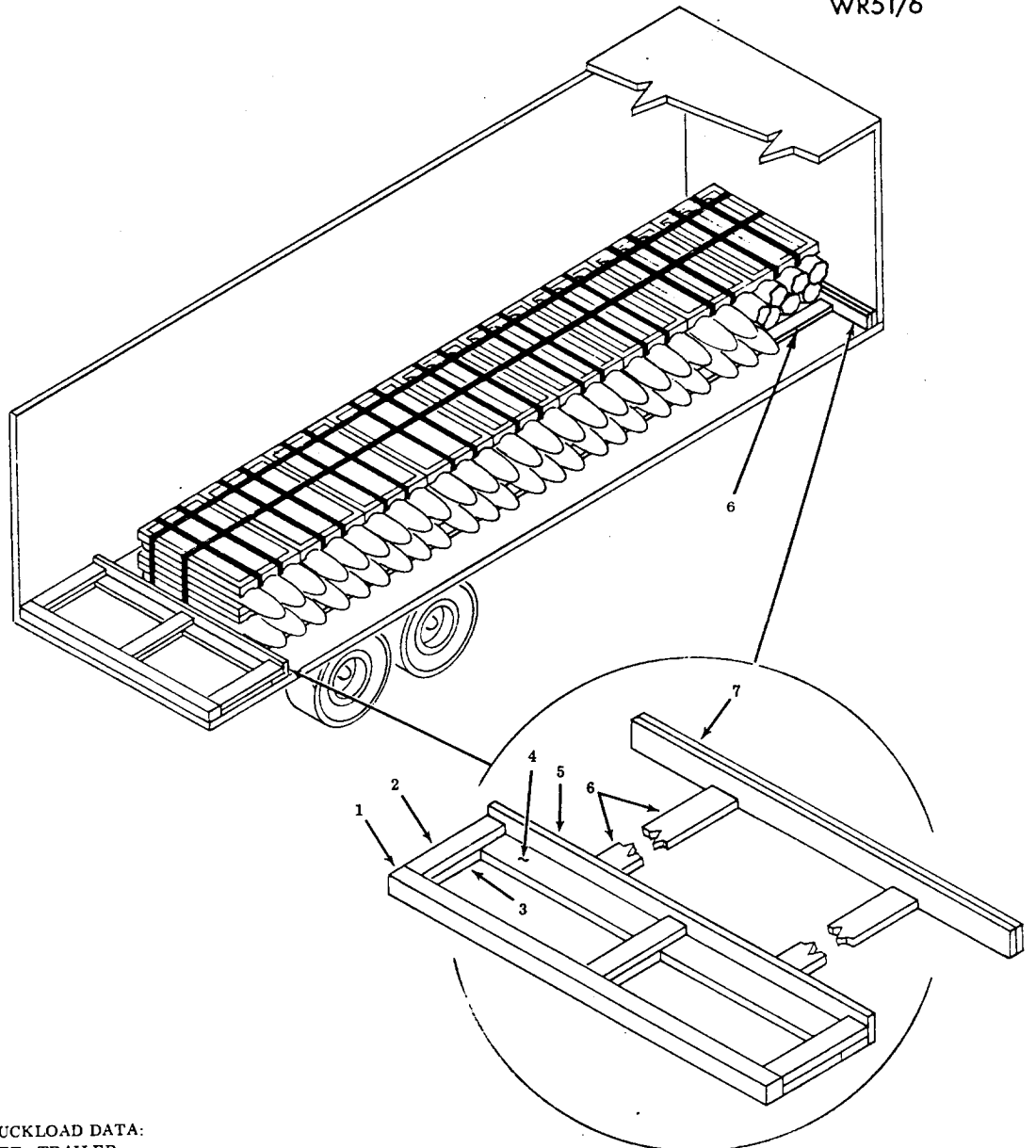
FTL-27, 35, AND 40 FT. TRAILERS

A. LOADING AND DUNNAGING PROCEDURE. FULL LOAD FOR A 27 FOOT TRAILER CONSISTS OF 9 UNITS, 12 UNITS FOR A 35 FOOT TRAILER AND 13 UNITS FOR A 40 FOOT TRAILER AS SHOWN IN THE LOAD DIAGRAM. LOAD AND INSTALL DUNNAGE AS FOLLOWS:

1. POSITION CROSS MEMBERS (7) IN FORWARD END OF TRAILER.
2. POSITION ONE SLEEPER (6) WITH FORWARD END AGAINST CROSS MEMBERS (7) AND INBOARD EDGE OF SLEEPER 18 INCHES TO LEFT OF TRAILER CENTERLINE. SECURE SLEEPER WITH 16d NAILS.
3. PLACE UNITS IN THE TRAILER AS SHOWN WITH PALLET AGAINST INBOARD EDGE OF PREVIOUSLY INSTALLED SLEEPER (6). LOAD NUMBER OF UNITS SPECIFIED IN APPLICABLE LOAD DIAGRAM.
4. POSITION SECOND SLEEPER (6) AGAINST OPPOSITE SIDE OF PALLET. SECURE SLEEPER WITH 16d NAILS.
5. POSITION SLEEPER (5) AND CLEAT (4) AGAINST AFT UNIT AS SHOWN AND SECURE WITH 16d NAILS.
6. POSITION CROSS MEMBER (1) TO BEAR AGAINST REAR CORNER POSTS OR AGAINST DOORS IN ABSENCE OF CORNER POSTS.
7. POSITION SPACERS (2 AND 3) AND NAIL IN PLACE WITH 16d NAILS.
8. ATTACH SHIPPING DOCUMENTS TO REAR DUNNAGE.
9. CLOSE AND SEAL TRAILER DOORS.



WR51/6



TRUCKLOAD DATA:
 27 FT. TRAILER
 NUMBER OF UNITS 9
 WEIGHT 28,593 LBS.
 35 FT. TRAILER
 NUMBER OF UNITS 12
 WEIGHT 38,124 LBS.
 40 FT. TRAILER
 NUMBER OF UNITS 13
 WEIGHT 41,301 LBS.

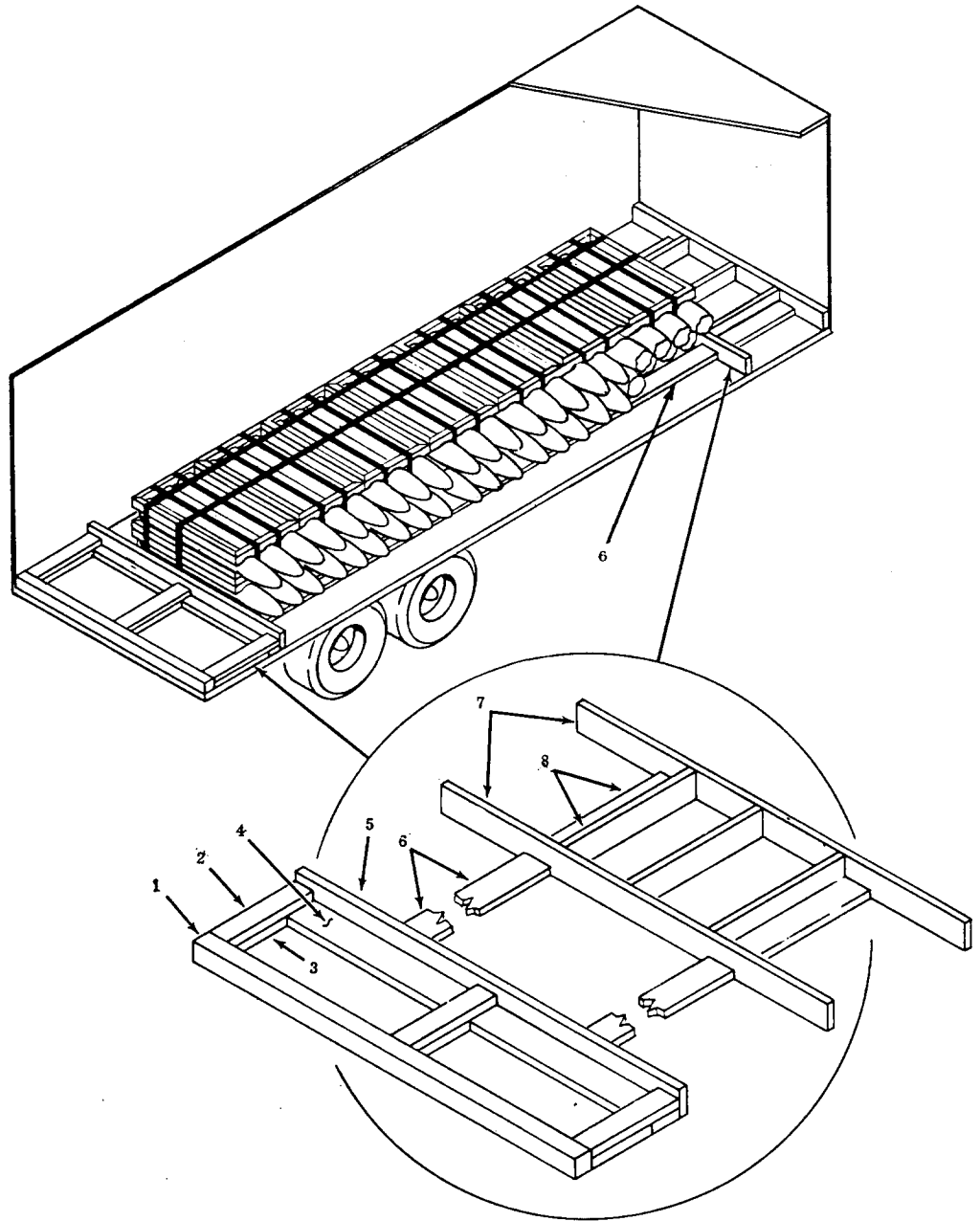
2	7	CROSS MEMBER	WOOD DRESSED	MM-L-751	2 x 6 CUT TO FIT
2	6	SLEEPER	WOOD DRESSED	MM-L-751	2 x 6 CUT TO FIT
1	5	SLEEPER	WOOD DRESSED	MM-L-751	2 x 6 CUT TO FIT
1	4	CLEAT	WOOD DRESSED	MM-L-751	2 x 6 CUT TO FIT
3	3	SPACER	WOOD DRESSED	MM-L-751	2 x 4 CUT TO FIT
3	2	SPACER	WOOD DRESSED	MM-L-751	2 x 4 CUT TO FIT
1	1	CROSS MEMBER	WOOD DRESSED	MM-L-751	4 x 4 CUT TO FIT
RQD	PIECE NO.	DESCRIPTION	MATL.	MATL. SPEC	DIMENSION
		LIST	OF MATERIAL		

LTL-27, 35, AND 40 FT. TRAILERS

A. LOADING AND DUNNAGING PROCEDURE. WHEN IT IS DESIRED TO SHIP LESS THAN A FULL LOAD ON ANY SIZE TRAILER, POSITION THE LOAD AND DUNNAGE AS NECESSARY TO KEEP THE LOAD AS NEAR CENTERED AS POSSIBLE ON THE TRAILER. LOAD AND INSTALL DUNNAGE AS FOLLOWS:

1. ASSEMBLE CROSS MEMBERS (7) AND SPACERS (8) IN FORWARD END OF TRAILER.
2. POSITION ONE SLEEPER (6) WITH FORWARD END AGAINST CROSS MEMBER (7) AND INBOARD EDGE OF SLEEPER 18 INCHES TO LEFT OF TRAILER CENTERLINE. SECURE WITH 16d NAILS.
3. PLACE UNITS IN TRAILER WITH PALLET AGAINST INBOARD EDGE OF PREVIOUSLY INSTALLED SLEEPER (6). LOAD DESIRED NUMBER OF UNITS.
4. POSITION SECOND SLEEPER (6) AGAINST OPPOSITE SIDE OF PALLET. SECURE WITH 16d NAILS.
5. POSITION SLEEPER (5) AND CLEAT (4) AGAINST AFT UNIT AS SHOWN AND SECURE WITH 16d NAILS.
6. POSITION CROSS MEMBER (1) TO BEAR AGAINST REAR CORNER POSTS OR AGAINST DOORS IN ABSENCE OF CORNER POSTS.
7. POSITION SPACERS (2 AND 3) AND NAIL IN PLACE WITH 16d NAILS.
8. ATTACH SHIPPING DOCUMENTS TO REAR DUNNAGE.
9. CLOSE AND SEAL TRAILER DOORS.

WR51/6



1	4	CLEAT	WOOD DRESSED	MM-L-751	2 x 6 CUT TO FIT
3	3	SPACER	WOOD DRESSED	MM-L-751	2 x 4 CUT TO FIT
3	2	SPACER	WOOD DRESSED	MM-L-751	2 x 4 CUT TO FIT
1	1	CROSS MEMBER	WOOD DRESSED	MM-L-751	4 x 4 CUT TO FIT
RQD	PIECE NO.	DESCRIPTION	MATL.	MATL. SPEC	DIMENSION
LIST OF MATERIAL					

5	8	SPACER	WOOD DRESSED	MM-L-751	2 x 6 CUT TO FIT
2	7	CROSS MEMBER	WOOD DRESSED	MM-L-751	2 x 6 CUT TO FIT
2	6	SLEEPER	WOOD DRESSED	MM-L-751	2 x 6 CUT TO FIT
1	5	SLEEPER	WOOD DRESSED	MM-L-751	2 x 6 CUT TO FIT
RQD	PIECE NO.	DESCRIPTION	MATL.	MATL. SPEC	DIMENSION
LIST OF MATERIAL					

LTL DUNNAGE FOR 27, 35, AND 40 FOOT TRAILERS

PAGE 5