

Code Ident
10001

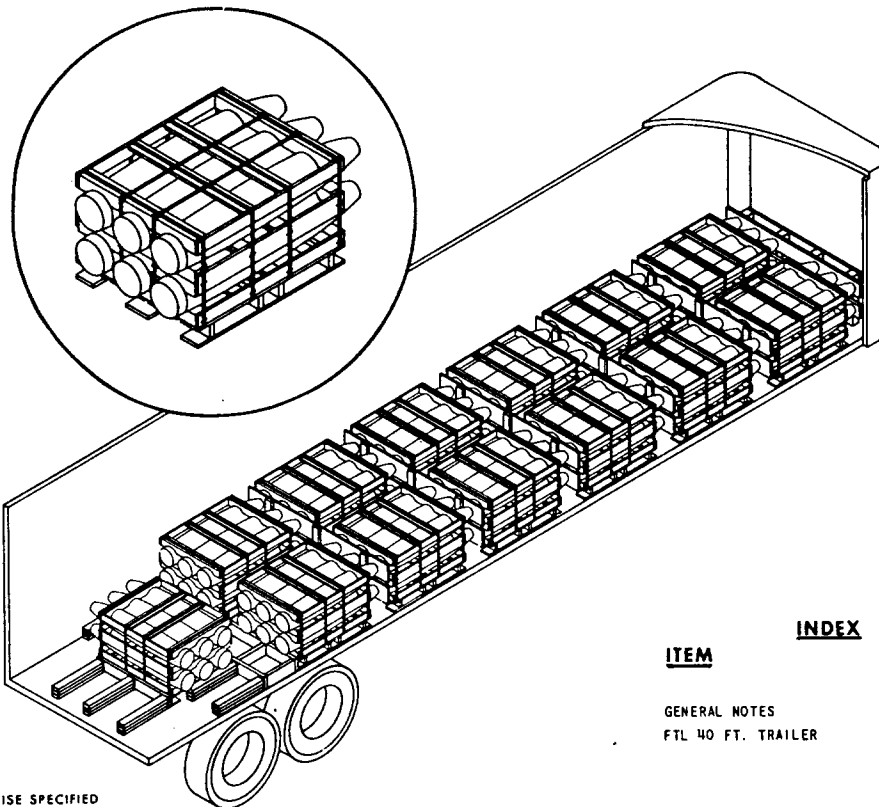
Naval Ordnance Systems Command
Department of the Navy

WR-51/36
7 November 1967

WEAPONS REQUIREMENT, TRUCKLOADING
500 LB. L.D. BOMB MK 82 & MODS, PALLETIZED
DOMESTIC UNIT LOAD WR-53/702
(WITH PLASTIC NOSE PLUGS)

UNIT LOAD DATA

WEIGHT 3100 LBS.
DIMENSIONS 61 13/16 L x 40 W x 30 1/4 H
CUBE 42.7 CU. FT.



UNLESS OTHERWISE SPECIFIED
DIMENSIONS ARE IN INCHES

ITEM	INDEX	PAGE
GENERAL NOTES		2
FTL 40 FT. TRAILER		2 & 3

51/35	TRUCKLOADING (TOFC)				
53/702	PALLETIZING				
WR NO.	ASSOCIATED PROCESS	REV LTR	REVISION DESCRIPTION	DATE	TDA BUXPL SYSCOM APPROVAL
<p>AUTHORIZED AND RELEASED FOR GENERAL USE</p>		<p>ORIGINATOR <u>C. P. Troutman</u> 12/16/66 SIGNATURE</p> <p>NAVAL WEAPONS HANDLING LABORATORY U.S.N.A.D. EARLE, NEW JERSEY</p>			
<p><u>James E. Kelly</u> NWHL 12/19/66 SIGNATURE TECHNICAL DIRECTING ACTIVITY (TDA) DATE</p> <p><u>R.E. Albrecht</u> AIR-53042 1/17/68 SIGNATURE (AIR) (ORD) SYSCOM, BY DIRECTION DATE</p>					

GENERAL NOTES

1. THIS DOCUMENT PROVIDES DETAILED TRUCKLOADING INSTRUCTIONS APPLICABLE TO PALLETIZED UNIT LOADS OF 500 LB. L.D. BOMBS MK 82 AND MODS, WHEN THE BOMBS ARE PALLETIZED IN ACCORDANCE WITH WR 53/702 (WITH PLASTIC NOSE PLUGS).
2. PROCEDURES AND PRACTICES DESCRIBED HEREIN ARE INTENDED FOR REGULAR VAN-TYPE TRAILERS.
3. TRAILERS WITH METAL DECKS SHALL NOT BE USED.
4. A FULL TRUCKLOAD (FTL) FOR A 40 FT. TRAILER CONSISTS OF 13 UNIT LOADS OF 6 BOMBS EACH, FOR A TOTAL OF 78 BOMBS.
5. FOR LESS-THAN-TRAILER LOAD (LTL) FOLLOW THE PRINCIPLES CONTAINED IN THIS DOCUMENT. THE LOCATION OF THE LOAD SHALL BE SUCH AS TO COMPLY WITH AXLE LOAD LIMITATIONS.
6. UNLESS OTHERWISE SPECIFIED, DIMENSIONS ARE IN INCHES. FOR GENERAL TRUCKLOADING PROCEDURES AND REGULATIONS REFER TO THE GENERAL WEAPONS REQUIREMENT, WR-51.

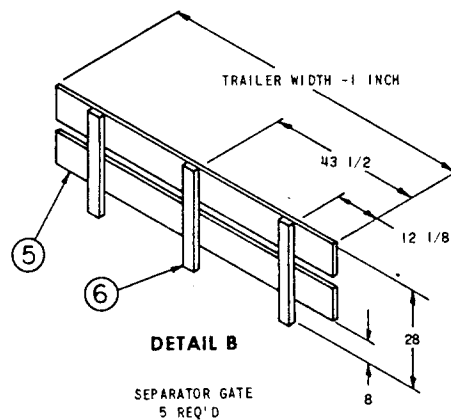
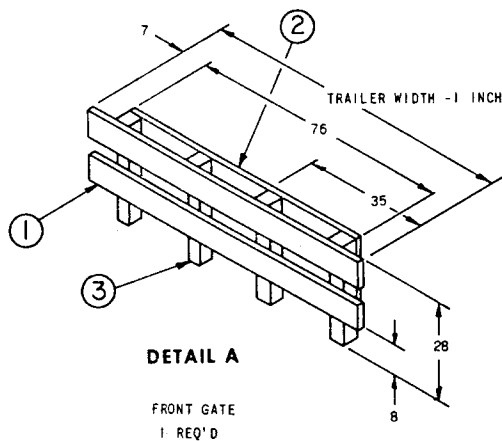
FTL 40 FT. TRAILER

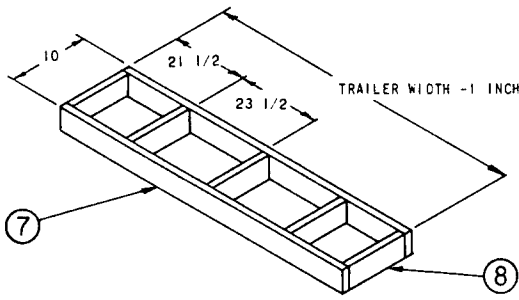
1. PREFABRICATE FRONT GATE (DETAIL A) CONSISTING OF 4 CROSSMEMBERS (ITEMS 1 AND 2) AND 4 UPRIGHT MEMBERS (ITEM 3) USING FOUR 12d NAILS EACH JOINT. POSITION GATE AGAINST TRAILER'S FRONT BULKHEAD AS SHOWN.
2. POSITION TWO UNIT LOADS IN THE TRAILER FORMING THE FIRST BAY WITH EACH UNIT LOAD AGAINST TRAILER WALL AND BOMB NOSES AGAINST HORIZONTAL MEMBERS OF FRONT GATE.
3. POSITION SLEEPERS (ITEM 4), DOUBLED, ON TRAILER FLOOR AGAINST EACH PALLET. NAIL FIRST MEMBER TO TRAILER FLOOR USING ONE 16d NAIL EVERY 8 INCHES AND NAIL SECOND MEMBER TO FIRST MEMBER IN THE SAME MANNER.
4. PREFABRICATE SEPARATOR GATE (DETAIL B) CONSISTING OF 2 CROSSMEMBERS (ITEM 5) AND 3 UPRIGHT MEMBERS (ITEM 6) USING FIVE 6d NAILS EACH JOINT, AND POSITION FIRMLY AGAINST FIRST BAY IN TRAILER. PLACE CROSSMEMBER (ITEM 5) AGAINST BOMB BASE.
5. CONTINUE LOADING BOMBS, REPEATING STEPS 2, 3 AND 4 UNTIL 12 PALLETS HAVE BEEN LOADED AND DUNNAGED. SEPARATOR GATE IS NOT USED FOR LAST BAY.
6. PREFABRICATE REAR SEPARATOR FRAME (DETAIL D) CONSISTING OF 2 CROSSMEMBERS (ITEM 7), AND 5 STRUT MEMBERS (ITEM 8) USING THREE 12d NAILS EACH JOINT, AND POSITION AGAINST THE 6TH BAY AS SHOWN.
7. POSITION ONE UNIT LOAD AGAINST SEPARATOR FRAME AND CENTERED IN TRAILER AS SHOWN.
8. POSITION CROSSMEMBER (ITEM 9) ON TRAILER FLOOR AND AGAINST PALLET AS SHOWN.
9. POSITION CLEATS (ITEM 10) TRIPLED AGAINST CROSSMEMBER (ITEM 9) AS SHOWN. NAIL 1ST PIECE TO DECK WITH 20d NAILS EVERY 8 INCHES. NAIL SECOND PIECE TO FIRST AND THIRD PIECE TO SECOND IN LIKE MANNER. TOENAIL TO PIECE 9 WITH TWO 12d NAILS EACH JOINT.
10. POSITION CLEATS (ITEM 11) TRIPLED AGAINST SEPARATOR FRAME AS SHOWN. NAIL IN SAME MANNER AS CLEATS (ITEM 10).

NOTE

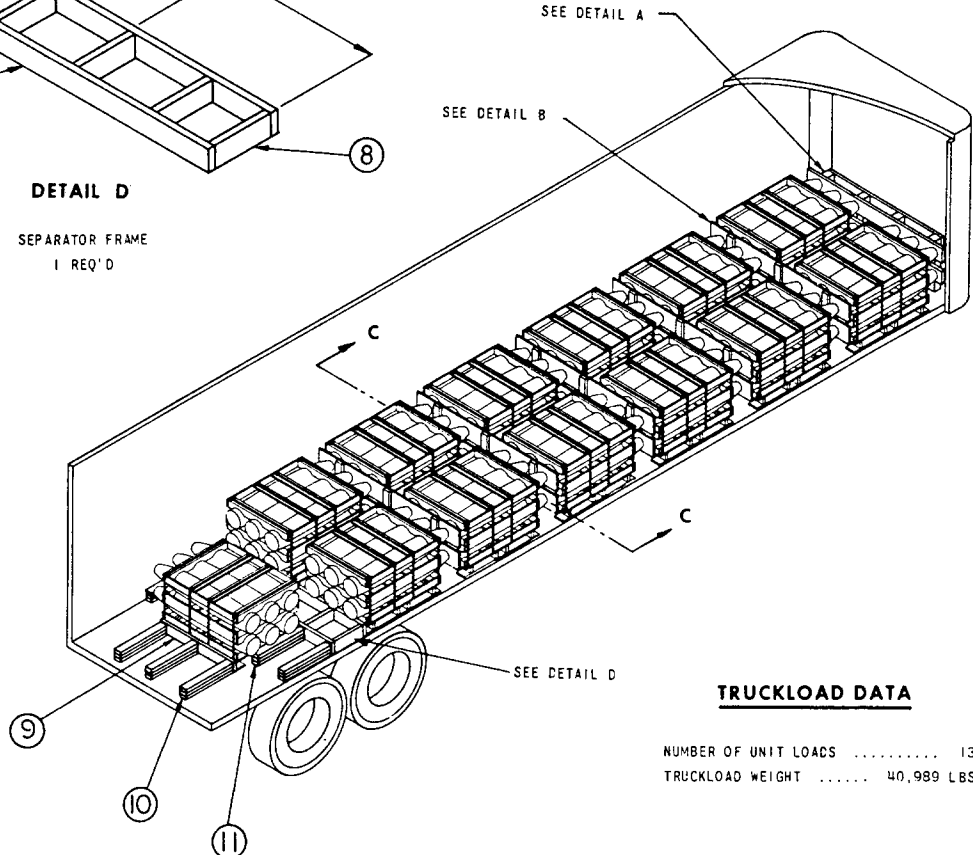
POSITION ONE CLEAT TO BEAR AGAINST EACH SIDE OF PALLET OF LAST UNIT LOAD AS SHOWN

11. ATTACH SHIPPING DOCUMENTS TO REAR DUNNAGE.
12. CLOSE AND SEAL TRAILER DOORS.



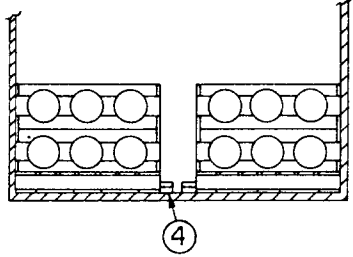


DETAIL D
SEPARATOR FRAME
1 REQ'D



TRUCKLOAD DATA

NUMBER OF UNIT LOADS 13
TRUCKLOAD WEIGHT 40,989 LBS.



SECTION C-C

12	11	CLEAT	WOOD DRESSED	MM-L-751	2 x 4 x 30
9	10	CLEAT	WOOD DRESSED	MM-L-751	2 x 4 x 30
1	9	CROSSMEMBER	WOOD DRESSED	MM-L-751	2 x 6 x 48
5	8	STRUT	WOOD DRESSED	MM-L-751	2 x 6 x 6 3/4
2	7	CROSSMEMBER	WOOD DRESSED	MM-L-751	2 x 6 x TRAILER WIDTH - 1 INCH
15	6	UPRIGHT	WOOD DRESSED	MM-L-751	2 x 4 x 28
10	5	SEPARATOR CROSSMEMBER	WOOD DRESSED	MM-L-751	1 x 8 x TRAILER WIDTH - 1 INCH
24	4	SLEEPER	WOOD DRESSED	MM-L-751	2 x 4 x 48
4	3	UPRIGHT	WOOD DRESSED	MM-L-751	4 x 4 x 28
2	2	FRONT GATE CROSSMEMBER	WOOD DRESSED	MM-L-751	2 x 8 x 76
2	1	FRONT GATE CROSSMEMBER	WOOD DRESSED	MM-L-751	2 x 8 x TRAILER WIDTH - 1 INCH
REQ.	ITEM	DESCRIPTION	MAT'L	MAT'L SPEC.	DIMENSIONS

LIST OF MATERIALS