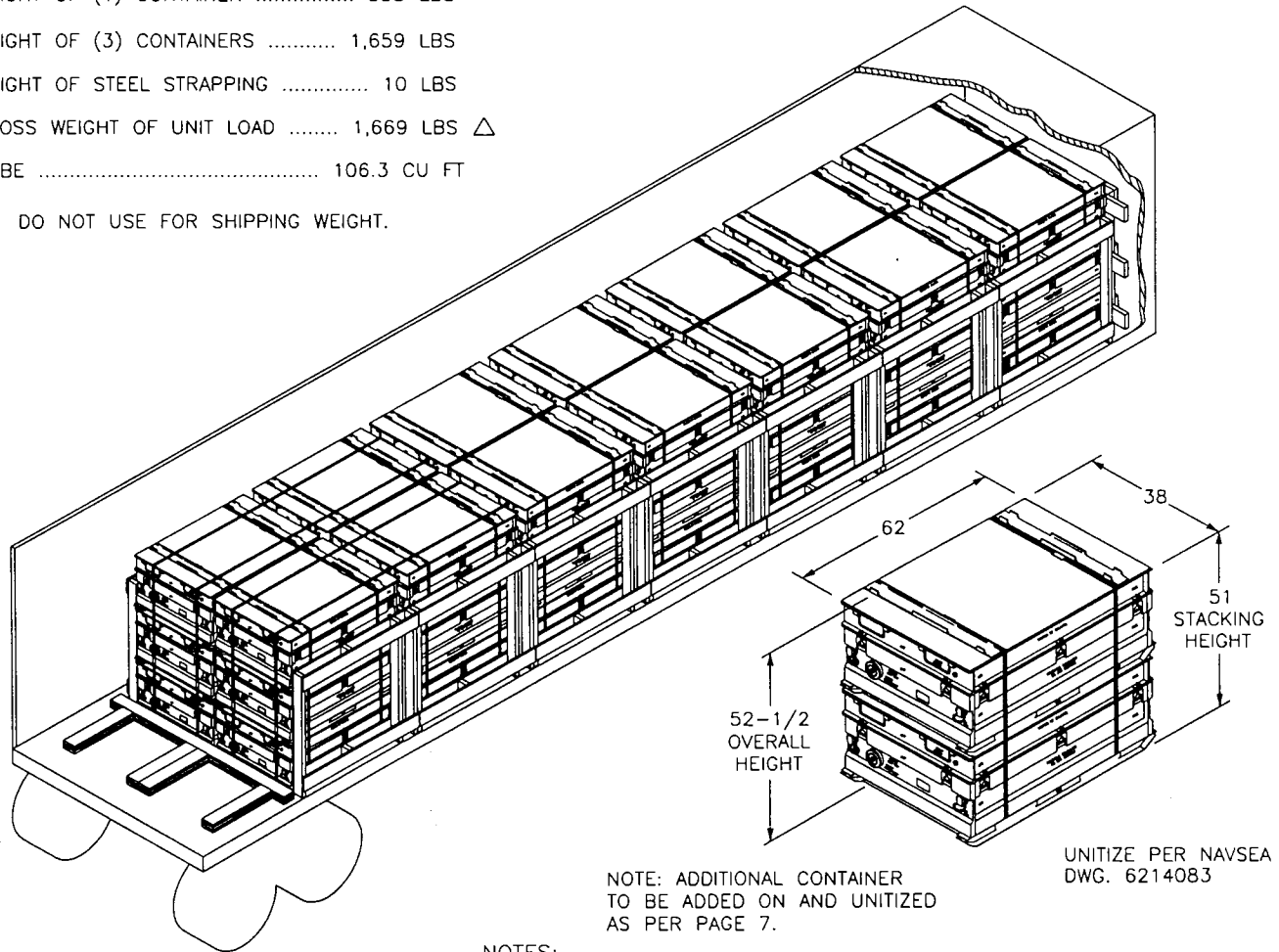


TRUCKLOADING

ADG-770 SERIES ADAPTER GROUP IN CNU-439 SERIES CONTAINER

UNIT LOAD DATA

WEIGHT OF (1) CONTAINER 553 LBS
 WEIGHT OF (3) CONTAINERS 1,659 LBS
 WEIGHT OF STEEL STRAPPING 10 LBS
 GROSS WEIGHT OF UNIT LOAD 1,669 LBS Δ
 CUBE 106.3 CU FT
 Δ DO NOT USE FOR SHIPPING WEIGHT.



NOTES:

1. UNLESS OTHERWISE SPECIFIED, DIMENSIONS ARE IN INCHES.
2. SEE SW020-AC-SAF- 010/020/030/040 FOR CROSS REFERENCE TO ASSOCIATED PALLETIZING, CONTAINER LOADING AND CAR LOADING MILITARY STANDARDS.

-	ORIGINAL ISSUE -- SUPERSEDES MIL-STD-1320-275	6/23/99	<i>QVJ</i>	<i>RS</i>	
REV LTR	REVISION DESCRIPTION	DATE	TDA	SYSCOM	APPROVAL
	DRAWN BY	6/23/99			DISTRIBUTION STATEMENT A APPROVED FOR PUBLIC RELEASE DISTRIBUTION IS UNLIMITED THIS TRUCKLOAD IS AUTHORIZED AND RELEASED FOR HIGHWAY SHIPMENT ONLY.
	ENGINEER	6/23/99			
	SYSTEMS ENGINEER	6/23/99			
	SYSTEMS ENG. SUPERVISOR	6/23/99			
	TECH DATA MANAGEMENT SUPERVISOR	6/23/99			
	 NAVSEASYSKOM (BY DIRECTION)				
DEPARTMENT OF THE NAVY NAVAL SEA SYSTEMS COMMAND WASHINGTON, D.C., 20362		CAGE CODE 53711	DWG NO. 6214079		REV. —
		SIZE A	PAGE 1 OF 8		

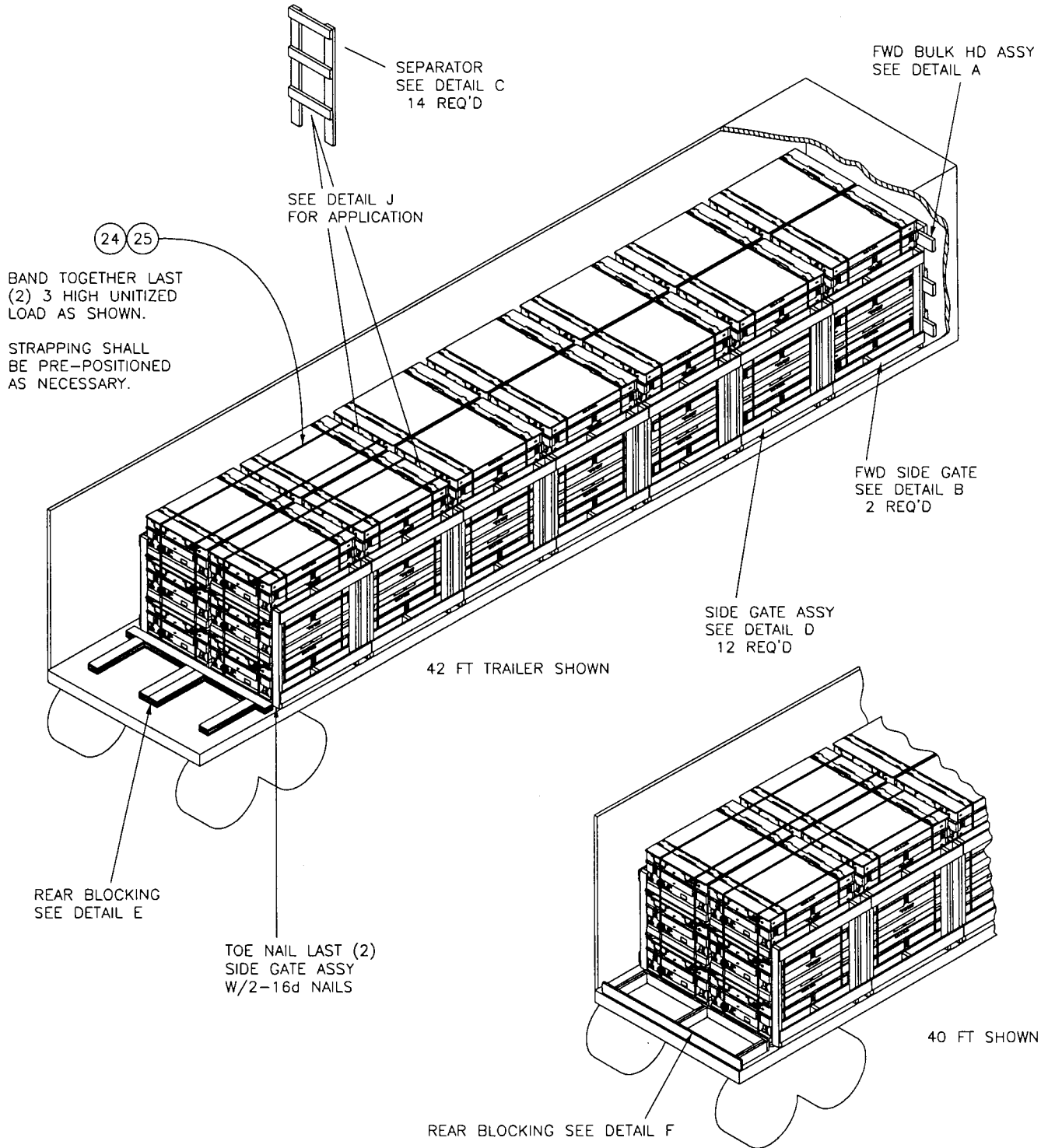
GENERAL NOTES:

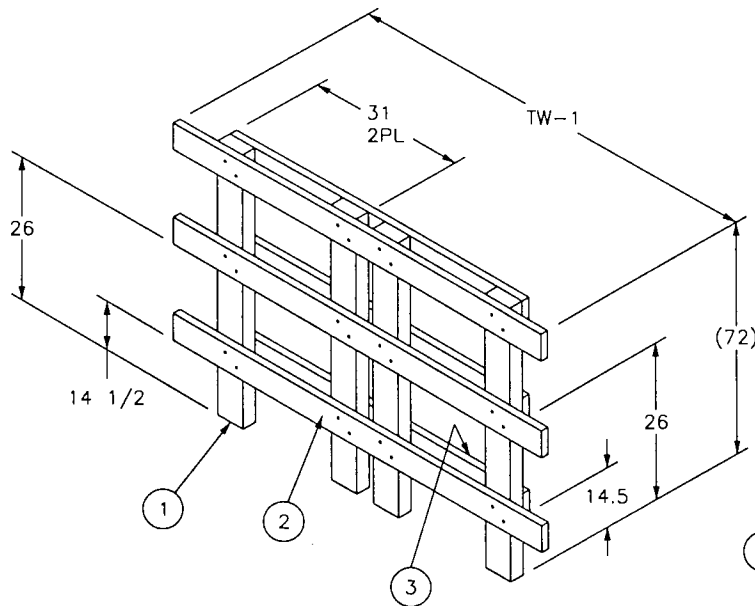
1. THIS DOCUMENT GIVES DETAILED INSTRUCTIONS FOR TRUCKLOADING THE ADG-770 SERIES ADAPTER GROUP PACKAGED IN THE CNU-439 SERIES SHIPPING AND STORAGE CONTAINER. THE UNIT LOAD SHOWN ON PAGE 1 SHALL BE IN ACCORDANCE WITH NAVSEA DWG. 6214083.
2. THE PROCEDURES DESCRIBED HEREIN ARE INTENDED FOR 40 FT AND LONGER ENCLOSED TRAILERS. SHORTER THAN 40 FT TRAILERS MAY BE USED FOR LESS THAN FULL LOADS PROVIDED THE SAME BLOCKING AND BRACING PRINCIPLES OUTLINED IN THIS DOCUMENT CAN BE APPLIED. DO NOT USE TRAILERS WITH ALL METAL FLOORS.
3. FOR LESS THAN FULL TRUCKLOADS (LTL), FOLLOW THE PRINCIPLES CONTAINED IN THIS DOCUMENT, DECREASING THE NUMBER OF CONTAINERS AS REQUIRED.
4. UNLESS OTHERWISE SPECIFIED, DUNNAGE LUMBER, STEEL STRAPPING, STRAP SEALS, AND NAILS SHALL BE AS SPECIFIED IN THE GENERAL TRUCKLOADING DOCUMENT MIL-STD-1320 (NAVY).
5. THE MAXIMUM GROSS WEIGHT OF THE TRACTOR-TRAILER AND THE ALLOWABLE AXLE WEIGHTS ARE THE RESPONSIBILITY OF THE CARRIER. THE CARRIER WILL ADVISE THE SHIPPER OF THESE LIMITATIONS, AND THE SHIPPER SHALL LOAD THE TRAILER IN SUCH A MANNER THAT THE TRACTOR-TRAILER WILL NOT EXCEED THESE LIMITATIONS.
6. FOR GENERAL TRUCKLOADING PROCEDURES REFER TO THE GENERAL TRUCKLOADING DOCUMENT, MIL-STD-1320 (NAVY).

FTL

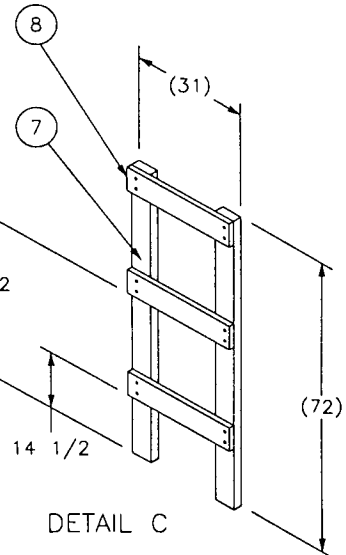
THIS LAYOUT REPRESENTS A FULL TRUCKLOAD CONSISTING OF 42 CONTAINERS LOADED ON A 42 FT TRAILER. THIS DOES NOT LIMIT FTL SHIPMENTS TO THE QUANTITY SHOWN SINCE FTL SHIPMENTS MAY CONSIST OF A GREATER NUMBER WHEN LOADED ON LONGER TRAILERS.

WHEN SHIPPING VARIOUS QUANTITIES OR LESS THAN TRUCKLOAD REFER TO THE BLOCKING AND BRACING PROCEDURES AS SHOWN ON PAGE 6.

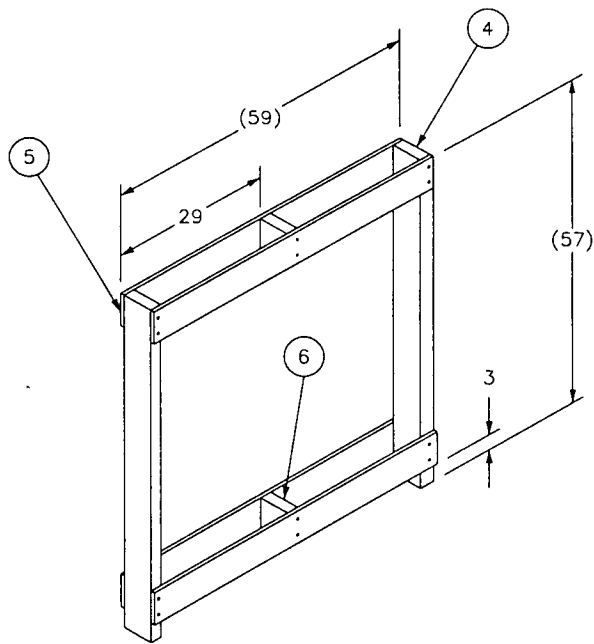




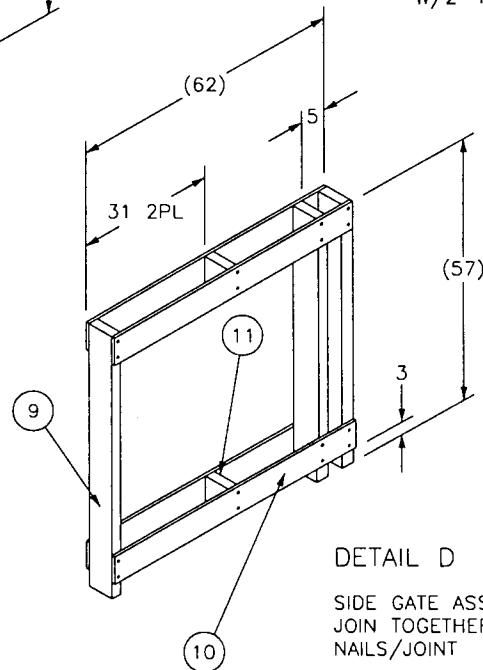
DETAIL A
 FWD BULKHEAD ASSY
 JOIN TOGETHER W/2-10d
 NAILS/JOINT



DETAIL C
 SEPARATOR
 JOIN TOGETHER
 W/2-10d NAILS/JOINT

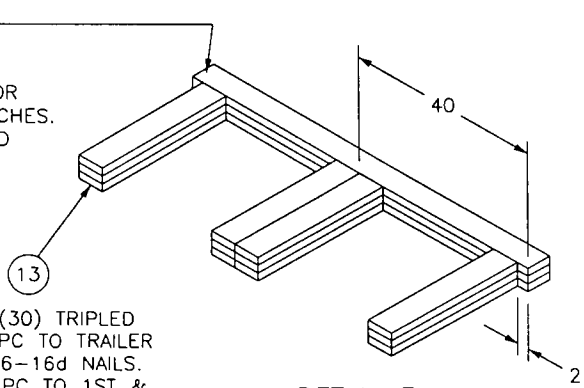


DETAIL B
 SIDE GATE ASSY (SHORT)
 JOIN TOGETHER W/2-10d
 NAILS/JOINT



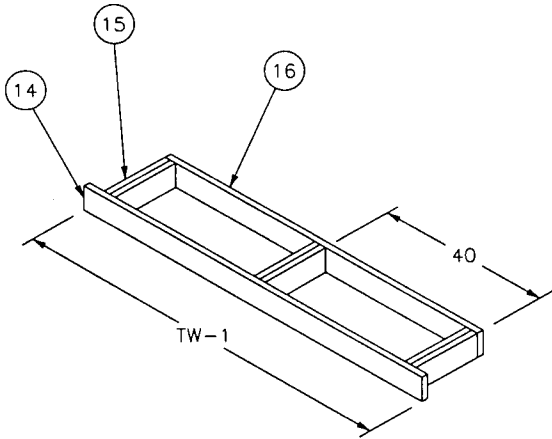
DETAIL D
 SIDE GATE ASSY (LONG)
 JOIN TOGETHER W/2-10d
 NAILS/JOINT

(2 X 6) X (80) TRIPLED
 NAIL 1ST PC TO TRAILER FLOOR
 W/1-16d NAIL EVERY 6-7 INCHES.
 NAIL 2ND PC TO 1ST AND 3RD
 TO 2ND IN LIKE MANNER.

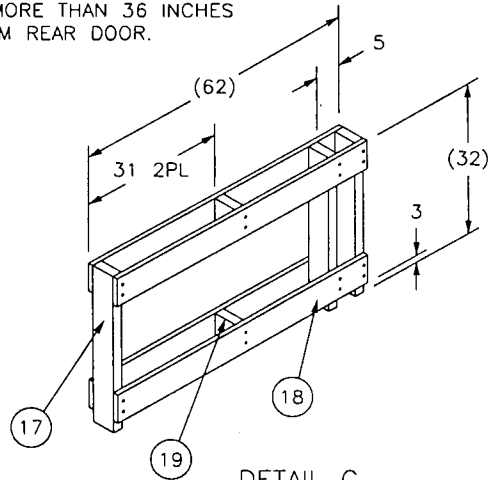


2 X 6 X (30) TRIPLED
 NAIL 1ST PC TO TRAILER
 FLOOR W/6-16d NAILS.
 NAIL 2ND PC TO 1ST &
 3RD TO 2ND IN LIKE
 MANNER 4PL.

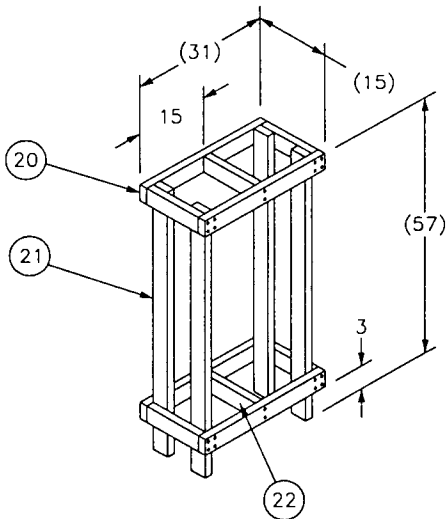
DETAIL E
 AFT BLOCKING TO BE
 USED WHEN LADING
 IS MORE THAN 36 INCHES
 FROM REAR DOOR.



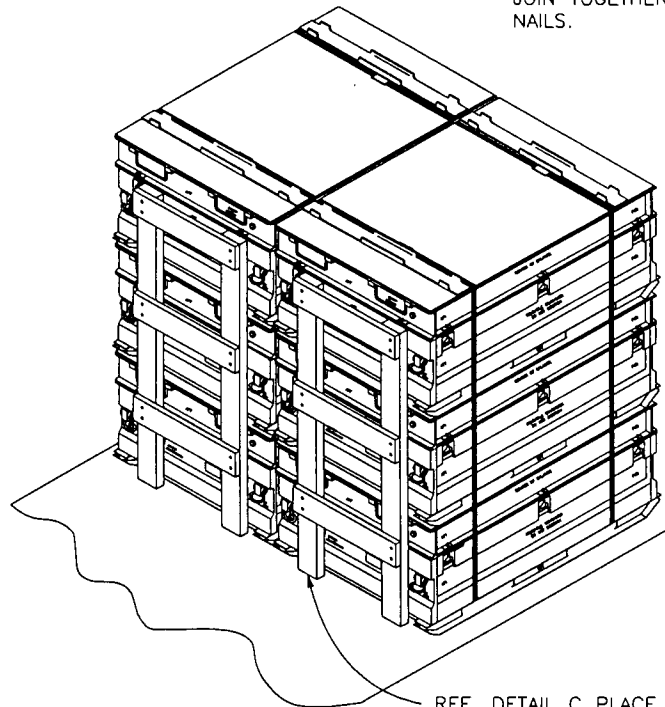
DETAIL F
 JOIN TOGETHER W/2-10d NAILS/JOINT
 USE WHEN THE DISTANCE FROM THE
 LADING TO REAR DOOR IS BETWEEN
 12 AND 36 INCHES.



DETAIL G
 SIDE GATE ASSY FOR
 (2 HIGH UNIT LOAD)
 JOIN TOGETHER W/2-10d
 NAILS.



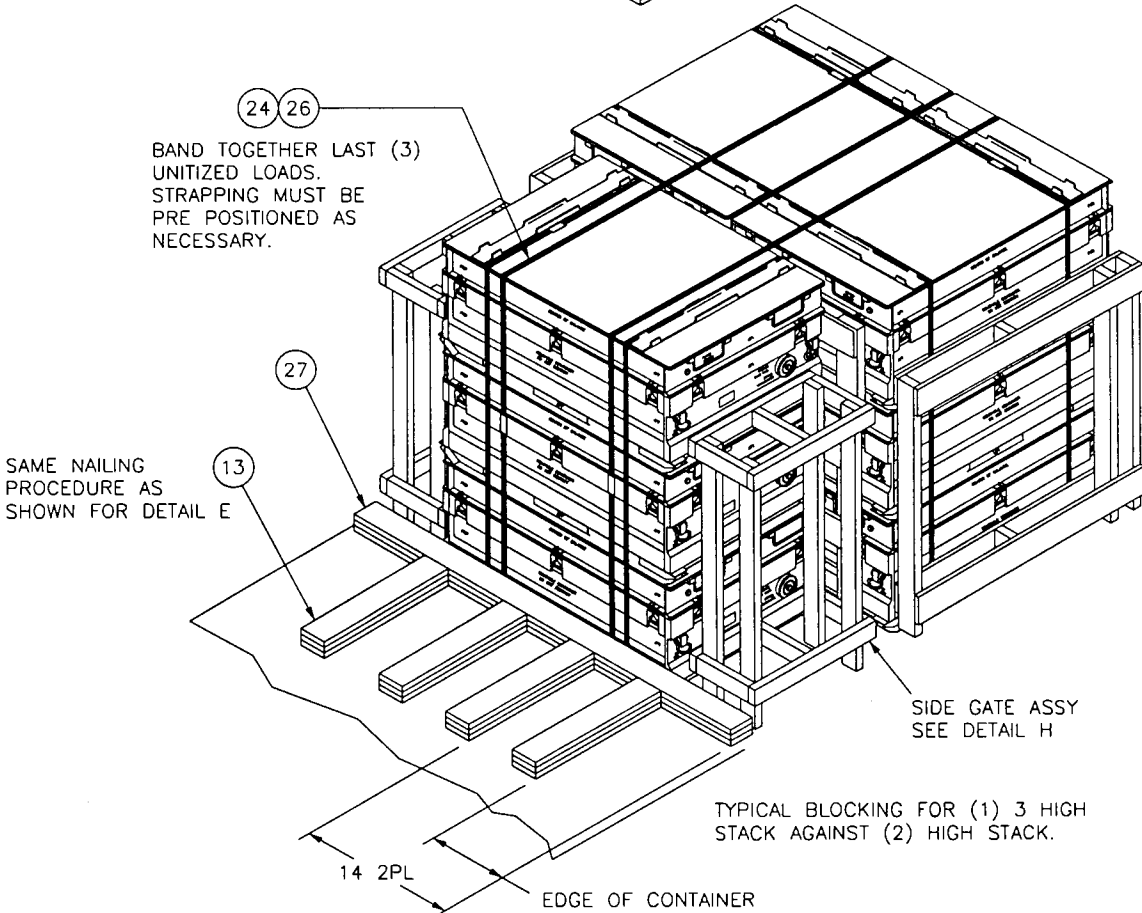
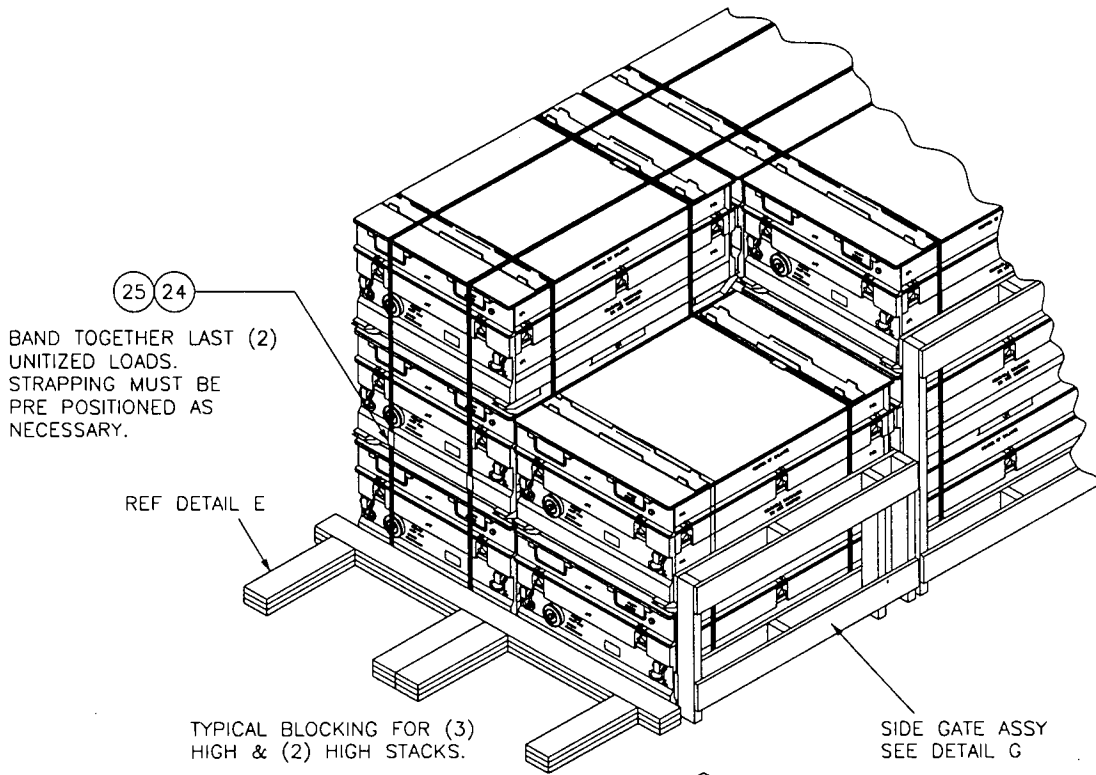
DETAIL H
 SIDE GATE ASSY
 JOIN TOGETHER W/2-10d
 NAILS 2/JOINT
 2 REQ'D



DETAIL J
 (APPLICATION OF SEPARATOR)
 REF. DETAIL C PLACE BETWEEN
 EACH UNIT LOAD & TOE NAIL
 TO TRAILER FLOOR W/2-16d
 NAILS/PC.

LTL

WHEN NECESSARY TO SHIP LESS THAN A FULL TRUCKLOAD REFER TO THE TYPICAL BLOCKING AND BRACING PROCEDURES SHOWN AND APPLY AS NECESSARY.

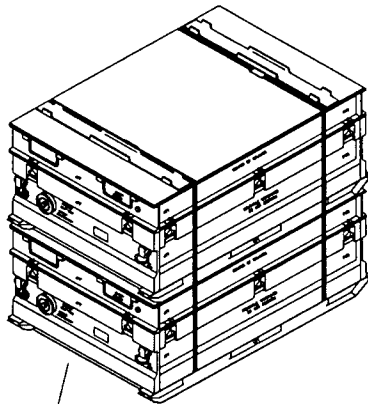


UNITIZING PROCEDURE

NOTE:

THE UNITIZING PROCEDURE SHOWN HERE IS FOR ADDING AN EXTRA CONTAINER TO A PREVIOUSLY UNITIZED LOAD REF (NAVSEA DWG. 6214083) AND UNITIZING TO MAKE A THREE HIGH UNIT LOAD.

1. USING A FORK LIFT TRUCK, STACK 3RD CONTAINER ON TO THE UNITIZED LOAD. BE SURE TO ALIGN THE STACKING FEATURES.
2. POSITION TWO STRAPS, ITEM 23, THROUGH THE FORK POCKETS OF THE 2ND CONTAINER AND ON OVER THE TOP CONTAINER.
3. TENSION STRAPPING, ITEM 23, AND DOUBLE NOTCH SEALS, ITEM 24.



REF NAVSEA DWG. 6214083



WARNING

THE STRAPPING TOGETHER OF CONTAINERS TO FORM A UNIT LOAD OF CONTAINERS THREE (3) HIGH IS AUTHORIZED FOR THE LOADING AND UNLOADING OF TRAILERS ONLY. ANY MOVEMENT OF THESE UNIT LOADS IS LIMITED TO THAT NECESSARY TO LOAD OR UNLOAD THE TRAILER.

3	27	CROSSMEMBER (LTL)		2 X 6 X TW-1
2	26	STRAPPING, (LAST 3 UNIT LOADS)	STEEL	.035 X 3/4 X 32 FT
2	25	STRAPPING, (LAST 4 UNIT LOADS)	STEEL	.035 X 3/4 X 34 FT
AR	24	SEALS	STEEL	FOR 3/4 STRAPPING
2	23	STRAPPING, UNITIZING	STEEL	.035 3/4 X 16 FT
2	22	SUPPORT	(DETAIL H)	2 X 4 X 12
4	21	VERTICAL		2 X 4 X 57
4	20	HORIZONTAL	(DETAIL H)	2 X 4 X 31
2	19	FILLER	(DETAIL G)	2 X 6 X 3 1/2
4	18	HORIZONTAL		1 X 4 X 62
3	17	VERTICAL	(DETAIL G)	2 X 6 X 32
1	16	HORIZONTAL	(DETAIL F)	2 X 6 X 80
6	15	BRACE		2 X 6 X AR
1	14	HORIZONTAL	(DETAIL F)	2 X 6 X TW-1
12	13	BACKUP CLEAT	(DETAIL E)	2 X 6 X 30
3	12	CROSSMEMBER	(DETAIL E)	2 X 6 X 80
2	11	FILLER	(DETAIL D)	2 X 6 X 3 1/2
2	10	HORIZONTAL		1 X 4 X 62
3	9	VERTICAL	(DETAIL D)	2 X 6 X 57
3	8	HORIZONTAL	(DETAIL C)	1 X 4 X 31
2	7	VERTICAL	(DETAIL C)	2 X 4 X 72
2	6	FILLER	(DETAIL B)	2 X 6 X 3 1/2
4	5	HORIZONTAL		1 X 4 X 59
2	4	VERTICAL	(DETAIL B)	2 X 6 X 57
3	3	HORIZONTAL	(DETAIL A)	2 X 6 X 70
3	2	HORIZONTAL (LONG)		2 X 6 X TW-1
4	1	POST, VERTICAL	(DETAIL A)	4 X 4 X 72
REQ	ITEM	DESCRIPTION	MAT'L/DWG	DIMENSIONS

LIST OF MATERIALS

NAVSEA
DWG NO.

6214079

REV. —

SIZE A

CAGE CODE
53711

PAGE 8 OF 8