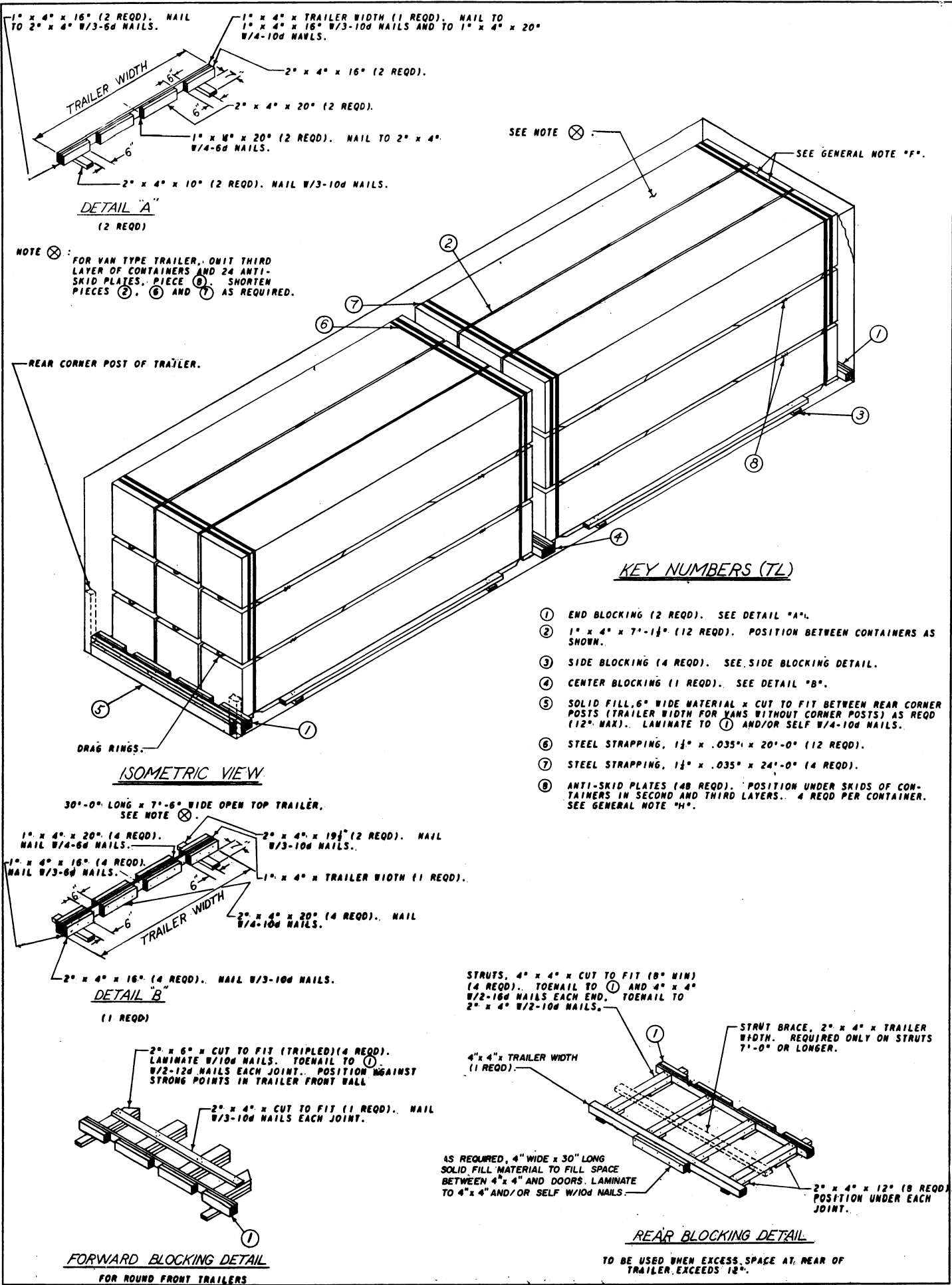


APPROVED  
BUREAU OF EXPLOSIVES

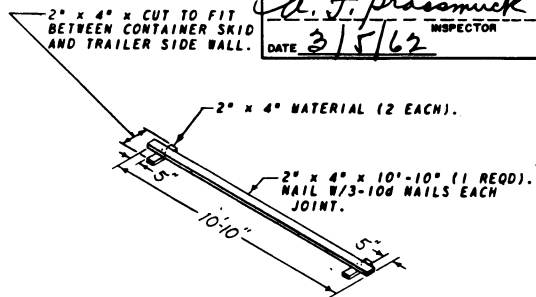
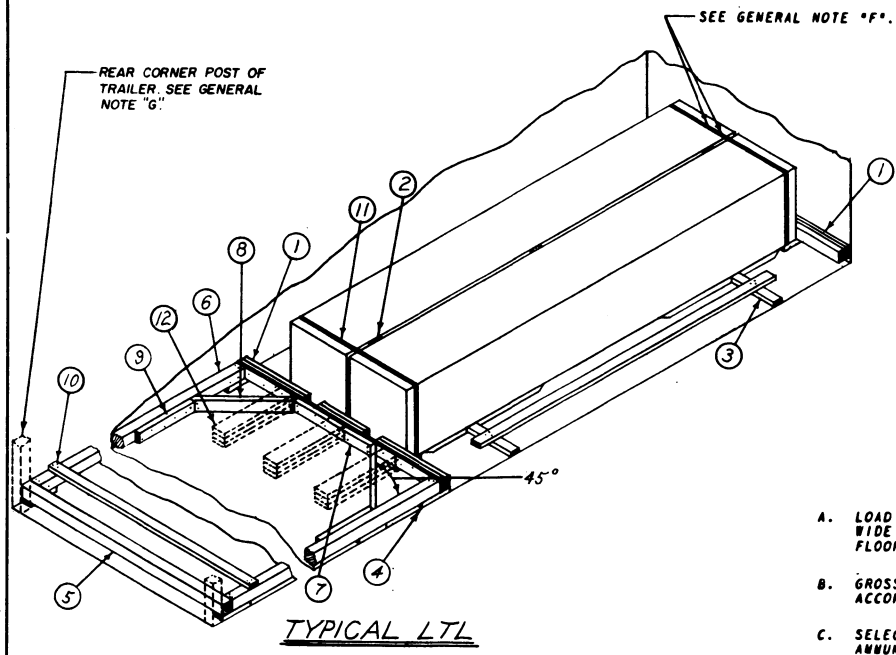
*A. J. Prassmuck*  
INSPECTOR  
DATE *3/5/62*

LOADING & BRACING (TL & LTL) IN VAN TYPE AND OPEN  
TOP TRAILERS OF ROCKET MOTOR, M5 AND/OR M5E1,  
PACKED ONE PER WOODEN SHIPPING CONTAINER, M13  
AND/OR M13A1, FOR THE NIKE-AJAX AND NIKE-HERCULES  
GUIDED MISSILES

DEVELOPER <i>GBF</i>	TRACER	REVISOR <i>DIW/JB</i>	SUBMITTED
CHECKER <i>RHA/GWP</i>	<i>KCAI</i>	REVISIONS	<i>Ralph D. Mabe</i> COLONEL ORG. CORPS U.S.A.
REVISIONS			<i>John Taylor</i> ORG. CORPS U.S.A.
			APPROVED BY ORDER OF THE CHIEF OF BUREAU
			<i>Andrew W. Reid</i> ORG. CORPS U.S.A.
			ORDNANCE CORPS U.S.A.
			30 APRIL 1962
CLASS	DIVISION	DRAWING	FILE
19	48	5644	GM IIA113



*A. J. Grossmuck*  
INSPECTOR  
DATE 3/5/62



SIDE BLOCKING DETAIL

GENERAL NOTES

- A. LOAD AS SHOWN IS BASED ON OPEN TOP TRAILER 31'-0" LONG X 7'-6" WIDE (INSIDE DIMENSIONS) WITH WOOD, WOOD & METAL, OR METAL FLOOR. SEE NOTE X.
- B. GROSS WEIGHT AND AXLE DISTRIBUTION OF WEIGHT WILL BE IN ACCORDANCE WITH PARAGRAPH B, 346.4, ORDN 3-4, VOL 3.
- C. SELECTION OF VEHICLE TO BE USED TO TRANSPORT GUIDED MISSILE AMMUNITION AND/OR COMPONENTS THEREOF, MUST COMPLY WITH AR-55-355, CHAPTER 213, FOR EXPLOSIVES OR OTHER DANGEROUS ARTICLES IN FULL.
- D. NOTICE: SHIPMENTS WILL BE POSITIONED IN THE TRAILER CONSISTENT WITH STATE WEIGHT LAWS. THE NUMBER OF UNITS MAY BE ADJUSTED TO FIT THE DIMENSIONS OF THE VEHICLE CONCERNED OR THE QUANTITY TO BE SHIPPED; HOWEVER, THE APPROVED METHODS CONTAINED HEREIN FOR FULL OR PARTIAL TRUCKLOAD MUST BE FOLLOWED FOR BLOCKING, BRACING AND STAYING OF THIS ITEM.
- E. FOR DETAIL OF M13 CONTAINER SEE DRAWING NO. 8026310. FOR DETAIL OF M13A1 CONTAINER SEE DRAWING NO. 8030062. CONTAINER DIMENSIONS - 177" LONG X 25 1/2" WIDE X 31 1/2" HIGH. GROSS WEIGHT - M13 CONTAINER, 1,883 POUNDS (APPROX). M13A1 CNTR, 1,949 POUNDS (APPROX).
- F. ALL 1 1/2" STRAPPING WILL BE SEALED WITH TWO (2) SEALS AND TWO (2) CRIMPS PER SEAL.
- G. FOR TRAILERS NOT EQUIPPED WITH REAR CORNER POSTS, REAR BLOCKING MUST CONTACT CLOSED DOORS.
- H. THE WORDS "ANTI-SKID PLATES" WILL BE STENCILED IN ONE INCH (1") LETTERS ON BOTH SIDES OF THE CONTAINERS TO SHOW THE LOCATION OF THESE PLATES.
- J. THIS ITEM IS AN ICC CLASS "B" EXPLOSIVE. PROCEDURES SHOWN HEREON ARE APPLICABLE FOR THE SHIPMENT OF CONTAINERS WITH INERT LOADED, EMPTY OR PRACTICE MOTORS AND OF EMPTY CONTAINERS.

KEY NUMBERS (LTL)

- ① SEE DETAIL "A" (2 REQD). FABRICATE TO SUIT LADING WIDTH.
- ② 1" x 4" x 20 1/2" (3 REQD). POSITION BETWEEN CONTAINERS AS SHOWN.
- ③ SIDE BLOCKING (2 REQD). SEE SIDE BLOCKING DETAIL.
- ④ RISER, 2" x 4" x 12" (MINIMUM 6 REQD). POSITION AS SHOWN.
- ⑤ 4" x 4" x TRAILER WIDTH (1 REQD).
- ⑥ 4" x 4" x CUT TO FIT (2 REQD). TOENAIL TO ① AND ⑤ W/2-16d NAILS EACH END. TOENAIL TO ② W/2-10d NAILS.
- ⑦ 2" x 4" x 36" (1 REQD). NAIL TO ① W/7-12d NAILS.
- ⑧ 2" x 4" x CUT TO FIT (2 REQD). DOUBLE BEVEL EACH END. POSITION AT 45°. TOENAIL TO ① AND ⑥ W/2-16d NAILS EACH END.
- ⑨ 2" x 4" x 24" (2 REQD). NAIL TO ⑥ W/6-12d NAILS.
- ⑩ 2" x 4" x TRAILER WIDTH (MINIMUM 1 REQD). POSITION EVERY 7'-0". NAIL TO ⑥ W/3-12d NAILS EACH END.
- ⑪ STEEL STRAPPING, 1 1/2" x .035" x 14'-6" (2 REQD).
- ⑫ 2" x 6" x 30" (TRIPLED) (3 REQD). FOR WOOD OR WOOD AND METAL FLOOR TRAILERS. DELETE PIECES ④ THRU ⑩. NAIL FIRST PIECE TO TRAILER FLOOR W/6-12d NAILS. NAIL EACH ADDITIONAL PIECE IN LIKE MANNER. TOENAIL TO ① W/2-12d NAILS.

BILL OF MATERIAL (TL)

LUMBER	LINEAL FEET	BOARD FEET
1" x 4"	132	44
2" x 4"	78	52
2" x 6"	23	23
NAILS	NO. REQD	POUNDS
6d (2")	56	1/3
10d (3")	98	1 1/2
12d (3-1/4")	32	3
STEEL STRAPPING, 1 1/2" x .035" - 336' REQD - 48' LBS		
ANTI-SKID PLATES - 48 REQD - 12 LBS		

MATERIAL SPECIFICATIONS

LUMBER: SEE PARAGRAPH B400, ORDN 3-4, VOL 3.  
 NAILS: COMMON, CEMENT COATED, FED SPEC FF-N-105.  
 ALT: ANNULAR-RING TYPE NAIL OF SAME SIZE.  
 STRAPPING, STEEL: TYPE 1, CLASS "A" OR "C", FED SPEC QQ-S-781. FOR FSN SEE SB-38-100.  
 ANTI-SKID PLATES: SIGNODE NO. 1 OR EQUAL.

**DO NOT SCALE**

LOAD AS SHOWN

ITEM	QUANTITY	WEIGHT
ROCKET MOTOR, M13 CNTR	18	33,894 LBS (APPROX)
DUNNAGE		360 LBS
TOTAL WEIGHT		34,254 LBS
ROCKET MOTOR, M13A1 CNTR		35,082 LBS (APPROX)

**LOADING & BRACING (TL & LTL) IN VAN TYPE AND OPEN TOP TRAILERS OF ROCKET MOTOR, M5 AND/OR M5E1, PACKED ONE PER WOODEN SHIPPING CONTAINER, M13 AND/OR M13A1, FOR THE NIKE-AJAX AND NIKE-HERCULES GUIDED MISSILES**

DESIGNED BY <b>GBF</b>	CHECKED BY <b>RHR/GWP</b>	DATE <b>DIW/JR</b>	SUBMITTED BY <i>Ralph G. Mackintosh</i>
REVISIONS			APPROVED BY CHIEF OF THE CHIEF OF QUARTERS <i>John Taylor</i>
			ORDNANCE CORPS U.S.A.
			APPROVED BY CHIEF OF THE CHIEF OF QUARTERS <i>Andrew W. Bird</i>
			ORDNANCE CORPS U.S.A.
<b>30 APRIL 1962</b>			
CLASS	DIVISION	DRAWING	FILE
19	48	5644	GM 11A113

