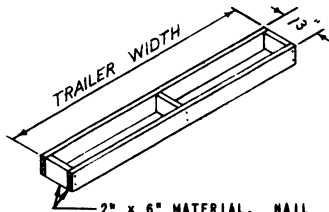


**LOADING & BRACING (TL & LTL) IN VAN TYPE TRAILER
OF BATTERY STORAGE, BB401/U, PACKED FOUR PER
WOODEN BOX, FOR THE NIKE-AJAX AND NIKE-
HERCULES GUIDED MISSILES**

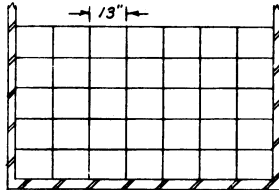
DESIGNER GBF	TRACER	ENGINEER DIW / 42	REVISOR
CHECKER RHA / GWP	CHECKER AAI	ENGINEER	EXAMINED <i>Andrew W. O'Neil</i> COMMANDER, SAVANNA ARMY DEPOT
REVISIONS			EXAMINED <i>John Taylor</i> ARMY MISSILE COMMAND
2	17 OCT 52	GBF / GWP	<i>Andrew W. O'Neil</i> ARMY MISSILE COMMAND
			APPROVED BY ORDER OF SUPERVISOR, ARMY MATERIEL COMMAND <i>Andrew W. O'Neil</i> ARMY MISSILE COMMAND
			MATERIEL COMMAND U.S.A.
			15 NOVEMBER 1954
			CLASS DIVISION DRAWING FILE
			19 48 5117 GMIIA17



TYPICAL RISER

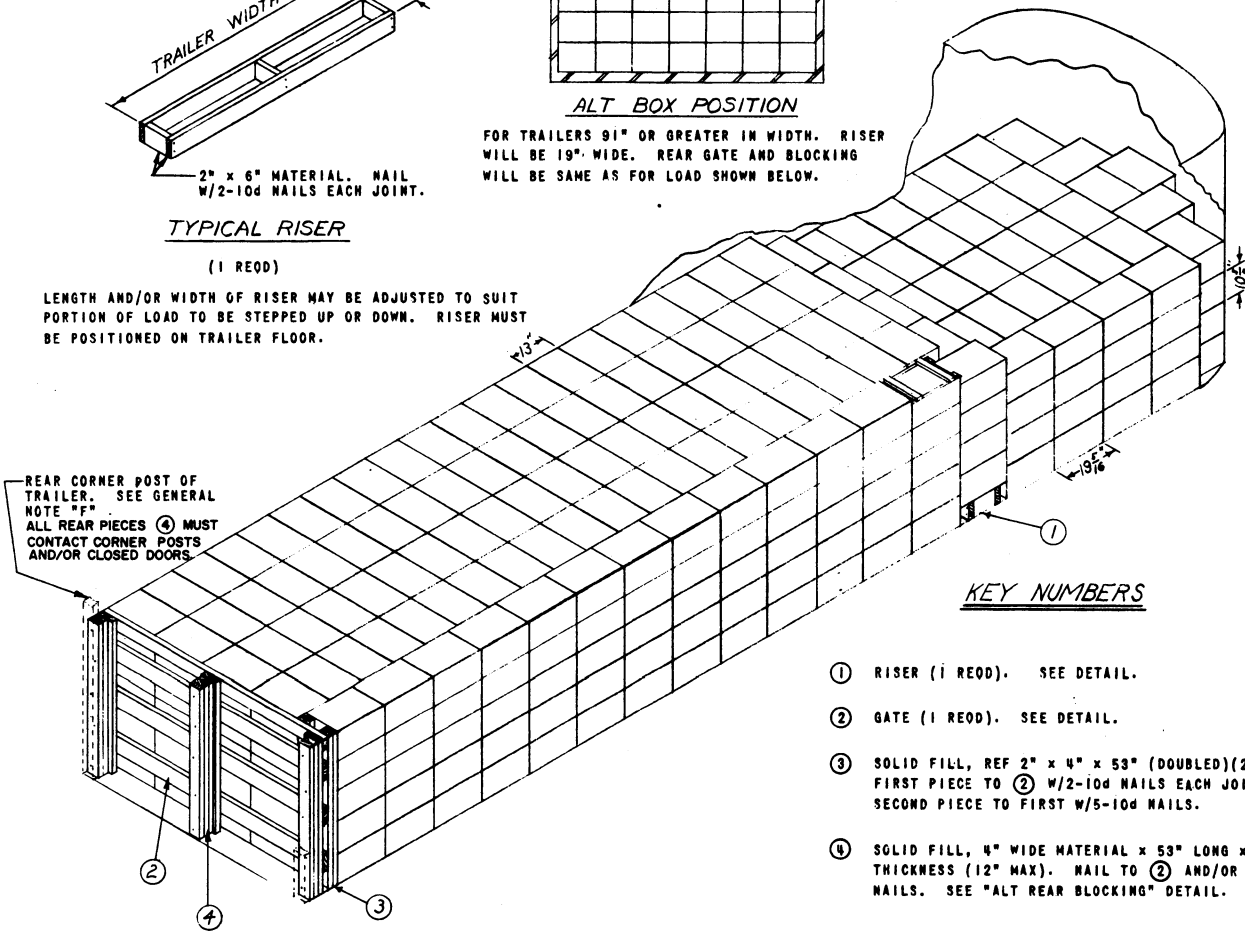
(1 REOD)

LENGTH AND/OR WIDTH OF RISER MAY BE ADJUSTED TO SUIT PORTION OF LOAD TO BE STEPPED UP OR DOWN. RISER MUST BE POSITIONED ON TRAILER FLOOR.



ALT BOX POSITION

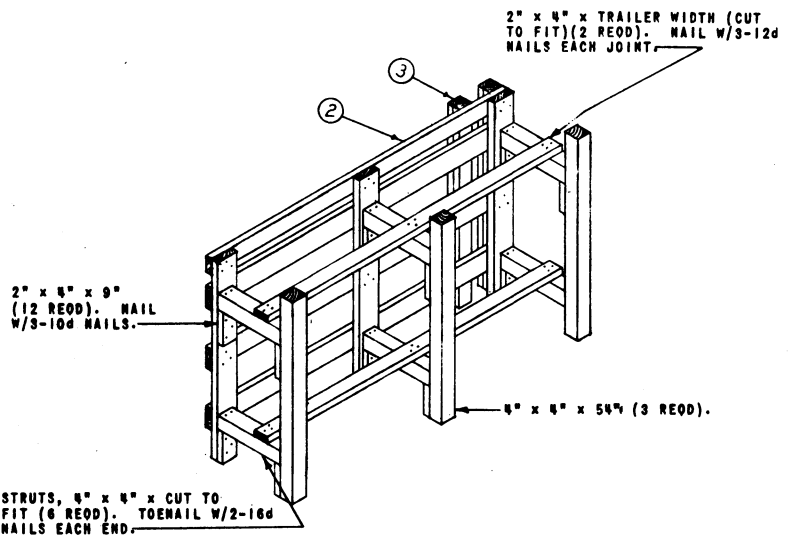
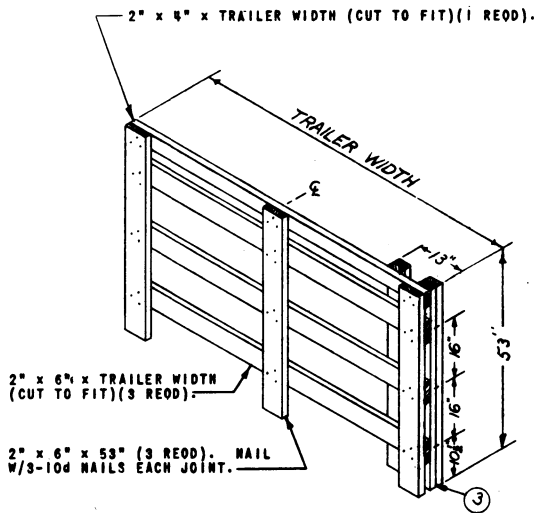
FOR TRAILERS 91" OR GREATER IN WIDTH. RISER WILL BE 19" WIDE. REAR GATE AND BLOCKING WILL BE SAME AS FOR LOAD SHOWN BELOW.



- ① RISER (1 REOD). SEE DETAIL.
- ② GATE (1 REOD). SEE DETAIL.
- ③ SOLID FILL, REF 2" x 4" x 53" (DOUBLED)(2 REOD). NAIL FIRST PIECE TO ② W/2-10d NAILS EACH JOINT. NAIL SECOND PIECE TO FIRST W/5-10d NAILS.
- ④ SOLID FILL, 4" WIDE MATERIAL x 53" LONG x REQUIRED THICKNESS (12" MAX). NAIL TO ② AND/OR SELF W/5-10d NAILS. SEE "ALT REAR BLOCKING" DETAIL.

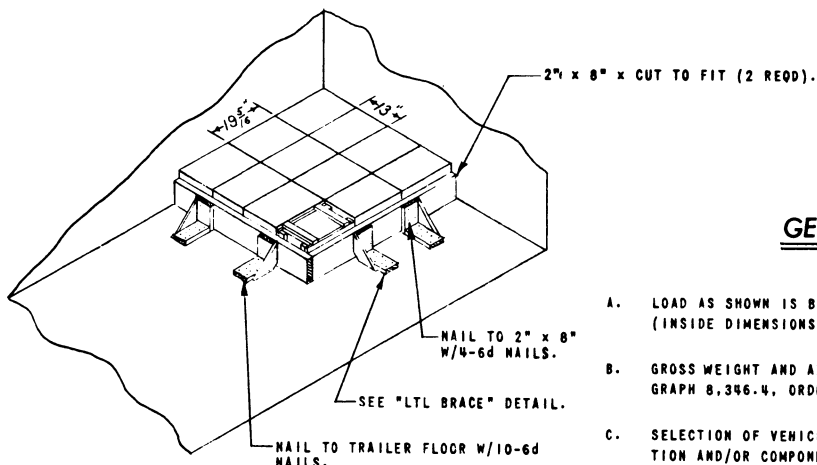
ISOMETRIC VIEW

30'-0" LONG x 7'-6" WIDE VAN TYPE TRAILER



TO BE USED WHEN EXCESS SPACE AT REAR OF TRAILER IS GREATER THAN 12".

A. F. Grassmuck
INSPECTOR
DATE 12/6/62

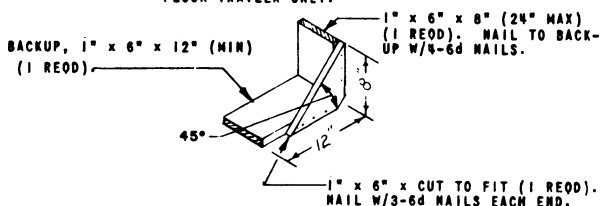


GENERAL NOTES

- A. LOAD AS SHOWN IS BASED ON VAN TYPE TRAILER 32'-0" LONG x 7'-6" WIDE (INSIDE DIMENSIONS) WITH WOOD, WOOD AND METAL, OR METAL FLOOR.
- B. GROSS WEIGHT AND AXLE DISTRIBUTION WILL BE IN ACCORDANCE WITH PARAGRAPH 8.346.4, ORDM 3-4, VOL 3.
- C. SELECTION OF VEHICLE TO BE USED TO TRANSPORT GUIDED MISSILE AMMUNITION AND/OR COMPONENTS THEREOF, MUST COMPLY WITH AR-55-355, CHAPTER 213, FOR EXPLOSIVES OR OTHER DANGEROUS ARTICLES, IN FULL.
- D. NOTICE: SHIPMENTS WILL BE POSITIONED IN THE TRAILER CONSISTENT WITH STATE WEIGHT LAWS. THE NUMBER OF UNITS MAY BE ADJUSTED TO FIT THE DIMENSIONS OF THE VEHICLE CONCERNED OR THE QUANTITY TO BE SHIPPED; HOWEVER, THE APPROVED METHODS CONTAINED HEREIN, FOR FULL OR PARTIAL TRUCKLOAD, MUST BE FOLLOWED FOR BLOCKING, BRACING AND STAYING OF THIS ITEM.
- E. FOR DETAIL OF BOX SEE DRAWING NO. 8026371.
BOX DIMENSIONS - 19-5/16" LONG x 13" WIDE x 10-5/8" HIGH.
GROSS WEIGHT - 65 LBS (APPROX).
- F. FOR TRAILERS NOT EQUIPPED WITH REAR CORNER POSTS, REAR BLOCKING MUST CONTACT CLOSED DOORS.
- G. CAUTION: ALL BOXES MARKED "THIS SIDE UP" MUST BE SO LOADED.
- H. PROCEDURES SHOWN HEREIN ARE APPLICABLE FOR THE SHIPMENT OF EMPTY BOXES.

TYPICAL LTL

FOR WOOD OR WOOD AND METAL FLOOR TRAILER ONLY.



LTL BRACE

EACH BRACE AS APPLIED FOR LONGITUDINAL OR LATERAL BRACING WILL SUPPORT 2,000 POUNDS. A BRACE MUST BE USED FOR EACH 24" OF LOAD DIMENSION. ADDITIONALLY, A MINIMUM OF TWO (2) BRACES MUST BE USED IN THEIR RESPECTIVE DIRECTION IF THE LOAD IS MORE THAN TWO (2) BOXES WIDE OR LONG.

BILL OF MATERIAL (TL)

LUMBER	LINEAL FEET	BOARD FEET
2" x 4"	57	38
2" x 6"	54	54
NAILS	NO. REOD	POUNDS
10d (3")	109	1-3/4

LOAD AS SHOWN

ITEM	QUANTITY	WEIGHT
BOXES	621	40,365 LBS (APPROX)
DUNNAGE		232 LBS
TOTAL WEIGHT		40,597 LBS (APPROX)

LOADING & BRACING (TL & LTL) IN VAN TYPE TRAILER OF BATTERY STORAGE, BB401/U, PACKED FOUR PER WOODEN BOX, FOR THE NIKE-AJAX AND NIKE-HERCULES GUIDED MISSILES

MATERIAL SPECIFICATIONS

- LUMBER: SEE PARAGRAPH 8.400, ORDM 3-4, VOL 3.
- NAILS: COMMON, CEMENT COATED, FED SPEC FF-N-105.
- ALT: ANNULAR-RING TYPE NAIL OF SAME SIZE.

DESIGNER GDF	TRACER	ENGINEER DIW/4	SUBMITTED <i>A. F. Grassmuck</i>
CHECKER RHA/SWP	CHECKED AAI	ENGINEER	COMMANDER, SAVANNA ARMY DEPOT
REVISIONS			EXAMINED <i>John Taylor</i>
2	17 OCT 62	GDF/SWP	ARMY MISSILE COMMAND
			APPROVED BY ORDER OF COMMANDER, ARMY MATERIEL COMMAND <i>Andrew W. O'Neil</i>
			ARMY MISSILE COMMAND
			MATERIEL COMMAND U.S.A.
			15 NOVEMBER 1954
			CLASS DIVISION DRAWING FILE
			19 48 5117 GMIIA17

DO NOT SCALE

