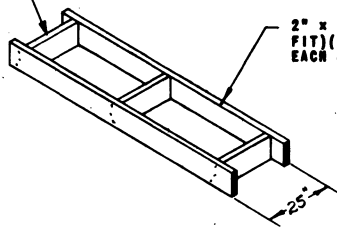


LOADING & BRACING (TL & LTL) IN VAN TYPE TRAILER OF IGNITER, ROCKET MOTOR, M24, PACKED EIGHTEEN PER WOODEN BOX, FOR THE NIKE-AJAX AND NIKE-HERCULES GUIDED MISSILES

| | | | |
|----------------------------|----------------------|------------------------------|--|
| DRAFTSMAN <i>M.R.S.</i> | TRACER | ENGINEER <i>DIW/Z</i> | SUBMITTED <i>Outman</i> |
| CHECKER <i>RHA</i> | CHECKER <i>AL</i> | ENGINEER | COMMANDER, SAMHNA ARMY DEPOT |
| REVISIONS | | | EXAMINED <i>John Taylor</i> |
| 2 | 10-25-62 | <i>M.S. RHP</i> <i>AL</i> | ARMY MISSILE COMMAND |
| | | | APPROVED BY ORDER OF COMMANDER, ARMY MATERIEL COMMAND <i>Andrew W. Heid</i> |
| | | | ARMY MISSILE COMMAND |
| | | | MATERIEL COMMAND U.S.A. |
| | | | 8 NOVEMBER 1954 |
| | | | CLASS DIVISION DRAWING FILE |
| | | | 19 48 5116 GM IIA16 |

2" x 8" x CUT TO FIT (AS REOD)



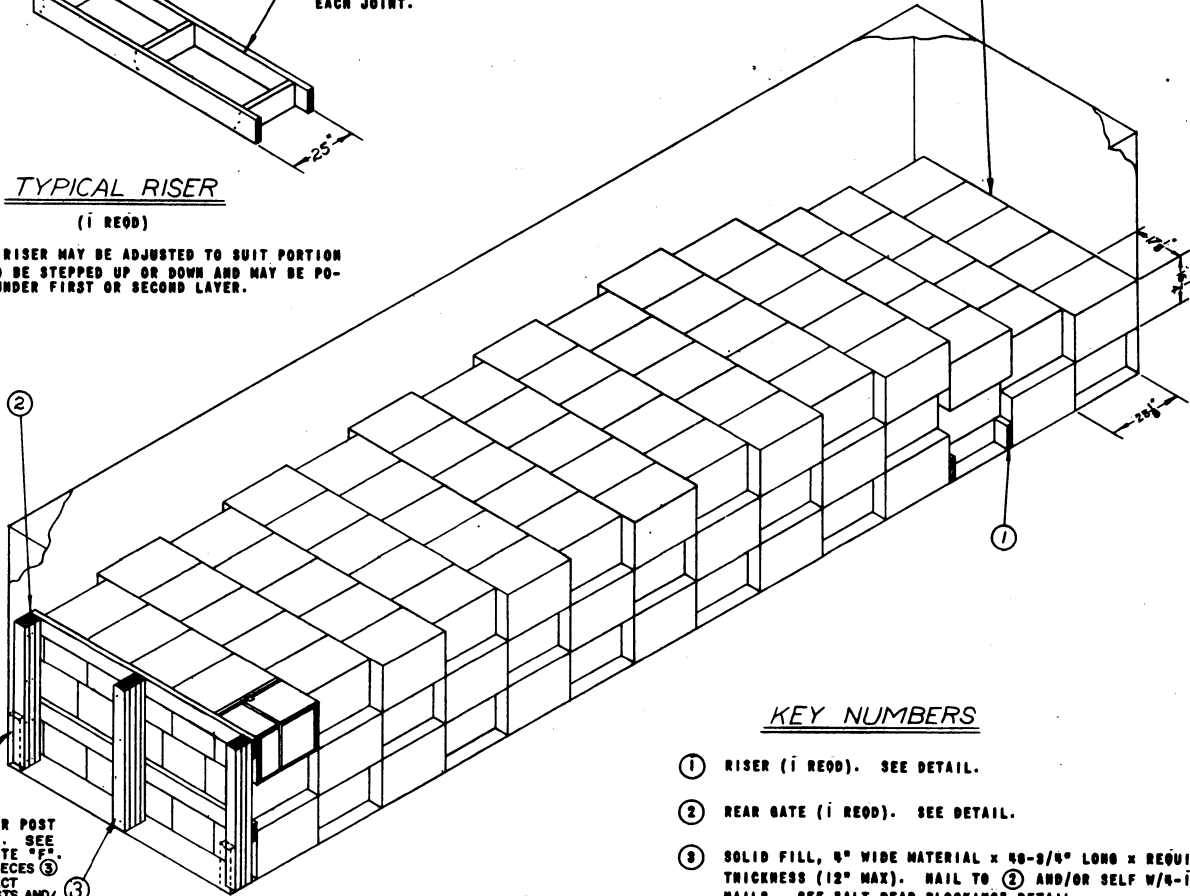
TYPICAL RISER

(i REOD)

LENGTH OF RISER MAY BE ADJUSTED TO SUIT PORTION OF LOAD TO BE STEPPED UP OR DOWN AND MAY BE POSITIONED UNDER FIRST OR SECOND LAYER.

2" x 8" x TRAILER WIDTH (CUT TO FIT)(2 REOD). NAIL W/8-10d NAILS EACH JOINT.

FOR ROUND FRONT TRAILERS SEE "TYPICAL LTL" VIEW FOR BOX POSITIONS.

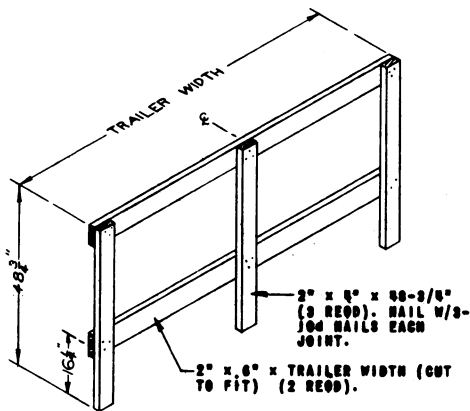


REAR CORNER POST OF TRAILER. SEE GENERAL NOTE "F". ALL REAR PIECES ③ MUST CONTACT CORNER POSTS AND/OR CLOSED DOORS.

ISOMETRIC VIEW

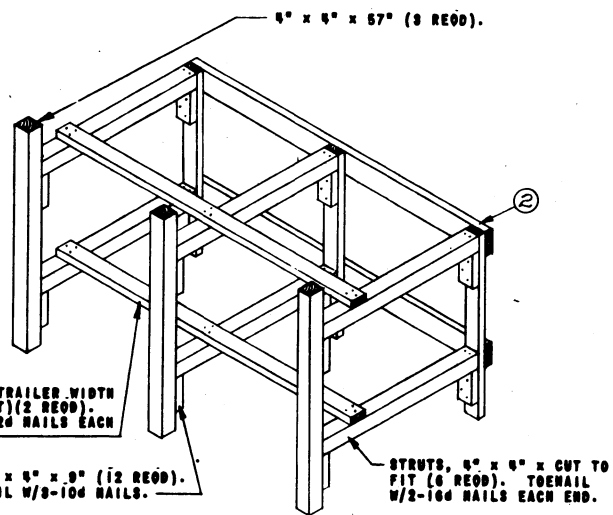
KEY NUMBERS

- ① RISER (i REOD). SEE DETAIL.
- ② REAR GATE (i REOD). SEE DETAIL.
- ③ SOLID FILL, 4" WIDE MATERIAL x 48-3/4" LONG x REQUIRED THICKNESS (12" MAX). NAIL TO ② AND/OR SELF W/4-10d NAILS. SEE "ALT REAR BLOCKING" DETAIL.



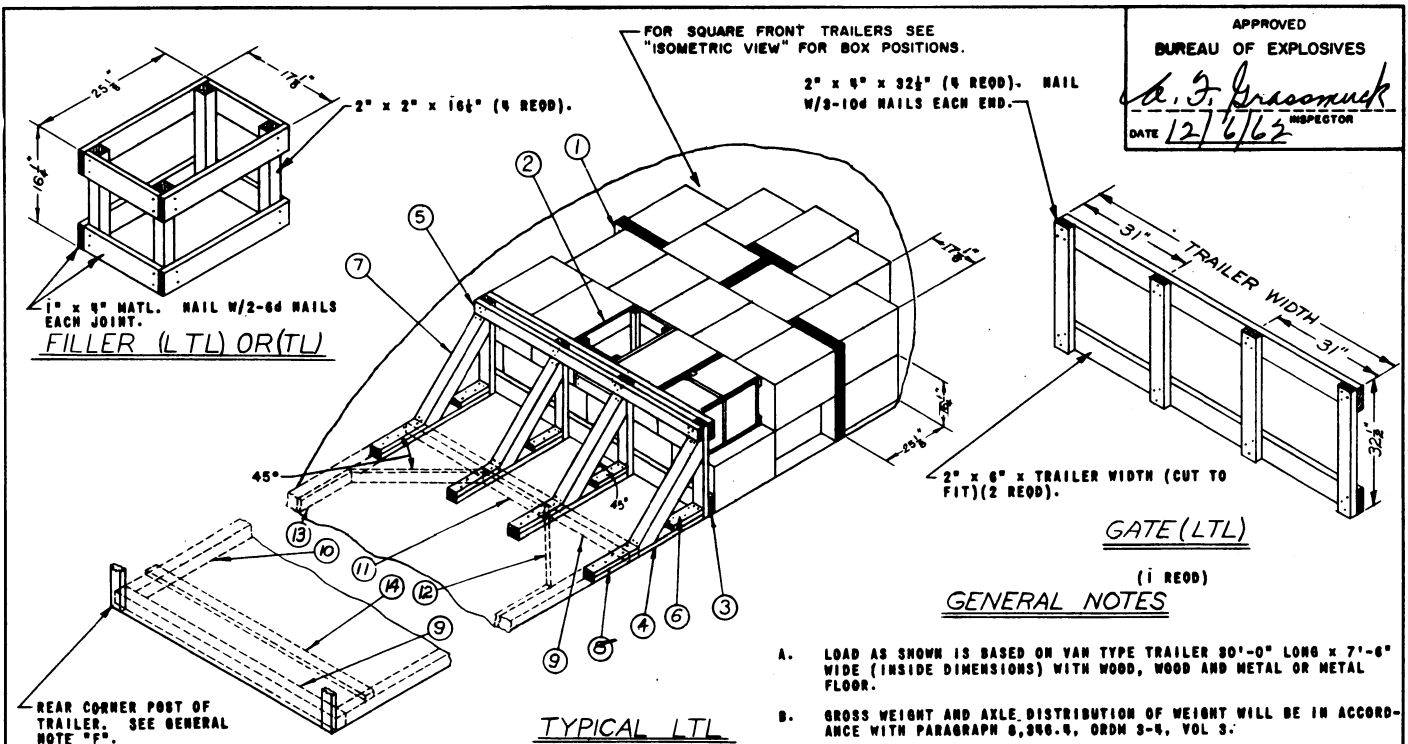
REAR GATE

(i REOD)



ALT REAR BLOCKING

TO BE USED WHEN EXCESS SPACE AT REAR OF TRAILER IS GREATER THAN 12".



APPROVED
 BUREAU OF EXPLOSIVES
A. J. Grassmuck
 INSPECTOR
 DATE 12/6/62

1" x 4" MATL. NAIL W/2-6d NAILS EACH JOINT.
 FILLER (LTL) OR(TL)

REAR CORNER POST OF TRAILER. SEE GENERAL NOTE "F".

KEY NUMBERS (LTL)

- ① SOLID FILL (AS REOD).
- ② FILLER (i REOD). SEE DETAIL.
- ③ GATE (i REOD). SEE DETAIL.
- ④ 2" x 4" x 45" (4 REOD). NAIL TO TRAILER FLOOR W/6-12d NAILS, OMIT NAILING TO ALL METAL FLOOR. SEE NOTE ⊗.
- ⑤ 2" x 4" x TRAILER WIDTH (CUT TO FIT)(1 REOD). NAIL TO ③ W/3-10d NAILS EACH JOINT.
- ⑥ 2" x 4" x 12" (4 REOD). NAIL TO ④ W/3-12d NAILS AND TOENAIL TO ③ W/2-12d NAILS.
- ⑦ 4" x 4" x CUT TO FIT (4 REOD). DOUBLE BEVEL EACH END. POSITION AT 45°. TOENAIL TO ③ AND ④ W/2-10d NAILS EACH END.
- ⑧ 2" x 4" x 18" (4 REOD). NAIL TO ④ W/5-12d NAILS. SEE NOTE ⊗.
- ⑨ 4" x 4" x TRAILER WIDTH (CUT TO FIT)(2 REOD). POSITION AS SHOWN. TOENAIL FORWARD PIECE TO ⑦ W/2-10d NAILS EACH JOINT.
- ⑩ 4" x 4" x CUT TO FIT(2 REOD). TOENAIL TO ⑨ W/2-10d NAILS EACH END.
- ⑪ 2" x 4" x 30" (1 REOD). NAIL TO ⑨ W/6-12d NAILS.
- ⑫ 2" x 4" x CUT TO FIT (2 REOD). DOUBLE BEVEL EACH END. POSITION AT 45°. TOENAIL TO ⑨ AND ⑩ W/2-10d NAILS EACH END.
- ⑬ 2" x 4" x 24" (2 REOD). NAIL TO ⑩ W/6-12d NAILS.
- ⑭ 2" x 4" x TRAILER WIDTH (CUT TO FIT)(MIN i REOD). POSITION EVERY 7'-0". NAIL TO ⑩ W/3-12d NAILS EACH END.

NOTE ⊗ WHEN LOADING TRAILERS WITH ALL METAL FLOORS OR IF THE METHOD IS PREFERRED IN WOOD OR WOOD AND METAL FLOOR TRAILERS, SHORTEN PIECE ④ TO 27", OMIT PIECE ⑧, AND APPLY PIECES ⑨ THRU ⑭.

FOUR (4) BACK UP CLEATS, SHOWN AS PIECES ⑨ AND ⑩ ARE ADEQUATE FOR RETAINING A MAXIMUM LTL LOAD OF 20,000 POUNDS.

"K-BRACE", SHOWN AS PIECES ⑨ THRU ⑭, IS ADEQUATE FOR RETAINING A MAXIMUM LTL LOAD OF 24,000 POUNDS.

| BILL OF MATERIAL (TL) | | |
|-----------------------|-------------|------------|
| LUMBER | LINEAL FEET | BOARD FEET |
| 2" x 4" | 41 | 28 |
| 2" x 6" | 16 | 15 |
| 2" x 8" | 21 | 28 |
| NAILS | NR. REOD | POUNDS |
| 10d (3") | 64 | 1 |

MATERIAL SPECIFICATIONS

LUMBER: SEE PARAGRAPH 8,400, ORDM 3-4, VOL 3.
 NAILS: COMMON, CEMENT COATED, FED SPEC FF-N-105.
 ALT: ANNULAR-RING TYPE NAIL OF SAME SIZE.

DO NOT SCALE

- GENERAL NOTES (i REOD)
- A. LOAD AS SHOWN IS BASED ON VAN TYPE TRAILER 30'-0" LONG x 7'-6" WIDE (INSIDE DIMENSIONS) WITH WOOD, WOOD AND METAL OR METAL FLOOR.
 - B. GROSS WEIGHT AND AXLE DISTRIBUTION OF WEIGHT WILL BE IN ACCORDANCE WITH PARAGRAPH 8,346.4, ORDM 3-4, VOL 3.
 - C. SELECTION OF VEHICLE TO BE USED TO TRANSPORT GUIDED MISSILE AMMUNITION AND/OR COMPONENTS THEREOF MUST COMPLY WITH ARSS-355, CHAPTER 213. FOR EXPLOSIVES OR OTHER DANGEROUS ARTICLES, IN FULL.
 - D. NOTICE: SHIPMENTS WILL BE POSITIONED IN THE TRAILER CONSISTENT WITH STATE WEIGHT LAWS. THE NUMBER OF UNITS MAY BE ADJUSTED TO FIT THE DIMENSIONS OF THE VEHICLE CONCERNED OR THE QUANTITY TO BE SHIPPED; HOWEVER, THE APPROVED METHODS CONTAINED HEREIN, FOR FULL OR PARTIAL TRUCKLOAD, MUST BE FOLLOWED FOR BLOCKING, BRACING, AND STAYING OF THIS ITEM.
 - E. FOR DETAIL OF BOX SEE DRAWING NR. 8026200
 BOX DIMENSIONS - 25" LONG x 16 1/2" WIDE x 17-1/8" HIGH.
 GROSS WEIGHT - 202 POUNDS (APPROX).
 - F. FOR TRAILERS NOT EQUIPPED WITH REAR CORNER POSTS, REAR BLOCKING MUST CONTACT CLOSED DOORS.
 - G. THIS ITEM IS AN ICC CLASS "A" EXPLOSIVE. PROCEDURES SHOWN HEREIN ARE APPLICABLE FOR THE SHIPMENT OF BOXES WITH INERT LOADED, EMPTY OR PRACTICE IGNITERS.

LOAD AS SHOWN

| ITEM | QUANTITY | WEIGHT |
|--------------|----------|---------------------|
| BOXES | 195 | 39,390 LBS (APPROX) |
| DUNNAGE | | 170 LBS |
| TOTAL WEIGHT | | 39,560 LBS (APPROX) |

LOADING & BRACING (TL & LTL) IN VAN TYPE TRAILER OF IGNITER, ROCKET MOTOR, M24, PACKED EIGHTEEN PER WOODEN BOX, FOR THE NIKE-AJAX AND NIKE-HERCULES GUIDED MISSILES

| | | | |
|------------------------------|--------------------------|-----------------------|--|
| DESIGNED BY <i>M.A.S.</i> | CHECKED BY <i>RHA</i> | DATE <i>DIW/75</i> | APPROVED BY <i>Andrew W. Heid</i> COMMANDER, SARGENT ARMY DEPOT |
| REVISIONS | | | EXAMINED BY <i>John Taylor</i> ARMY MISSILE COMMAND |
| 2 | 10-25-62 | <i>M.A.S. RHA</i> | APPROVED BY ORDER OF COMMANDER, ARMY MATERIEL COMMAND <i>Andrew W. Heid</i> ARMY MISSILE COMMAND |
| | | | MATERIEL COMMAND U.S.A. |
| | | | 8 NOVEMBER 1954 |
| CLASS | DIVISION | DRAWING | FILE |
| 19 | 48 | 5116 | GM IIA16 |

