

Code Ident.
10001

Naval Ordnance Systems Command
Department of the Navy

WR-53/705A
Change Notice 1
28 January 1969

WEAPONS REQUIREMENT, PALLETIZING
DOMESTIC UNIT LOAD
750 LB DEMOLITION BOMB M117A1

Make the following pen and ink changes:

Page 2

In "LIST OF MATERIALS", "DIMENSIONS" column, for item 11, change size to "16d".

Distribution
WR-53

Preparing Activity
NAD, Earle NWHL

Code Ident
10001

Naval Ordnance Systems Command
Department of the Navy
**WEAPONS REQUIREMENT, PALLETIZING
DOMESTIC UNIT LOAD
750 LB DEMOLITION BOMB M117A1**

WR-53/705 A

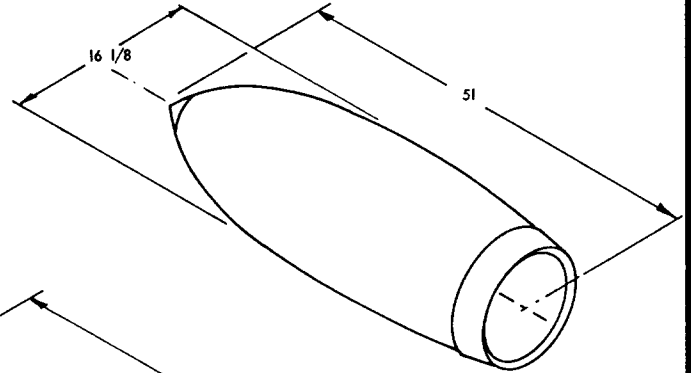
16 APRIL 1968
SUPERSEDING WR-53/705
8 DECEMBER 1966

UNIT LOAD DATA

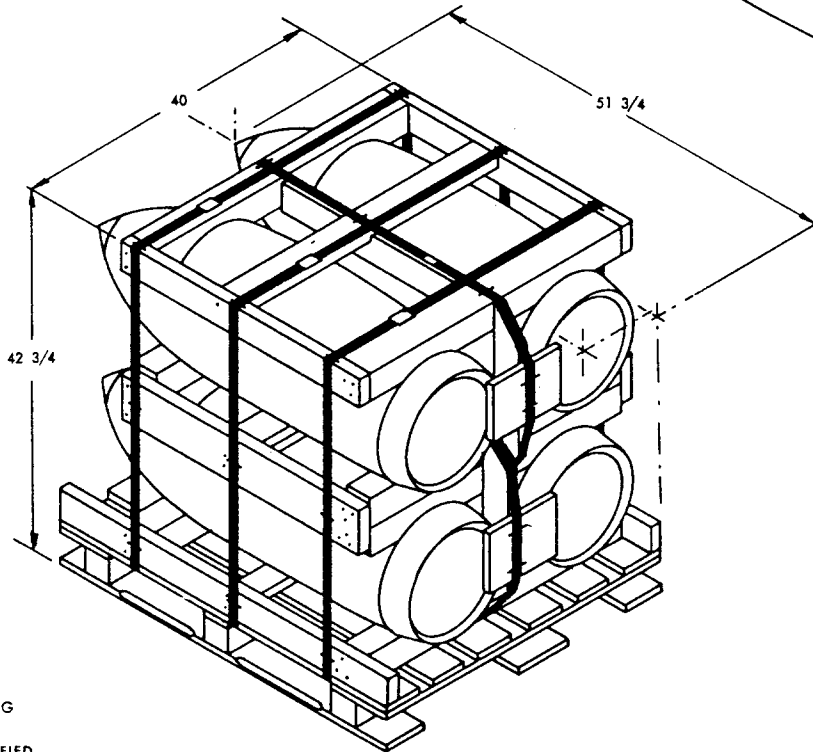
GROSS WEIGHT OF ONE BOMB 755 LBS.
NUMBER OF BOMBS PER UNIT LOAD 4
WEIGHT OF PALLET AND DUNNAGE (ESTIMATED) .. 210 LBS.
WEIGHT OF UNIT LOAD (ESTIMATED) 3230 LBS.
CUBE 51.2 CU. FT.

DO NOT STACK MORE THAN
4 UNIT LOADS HIGH IN STORAGE

CLASS A EXPLOSIVES



BOMB
DWG. NO. 9211824



FOR GENERAL PALLETIZING
REQUIREMENTS SEE WR-53
UNLESS OTHERWISE SPECIFIED
DIMENSIONS ARE IN INCHES

52/77	CARLOADING
51/46	TRUCKLOADING (TOFC)
51/39	TRUCKLOADING (HIGHWAY)
WR NO.	ASSOCIATED PROCESS

A	ADDED SPACER ASSEMBLY & CHANGED BOTTOM FRAME	4-3-68	JER	P.E.A.
REV LTR	REVISION DESCRIPTION	DATE	TDA	SYSCOM APPROVAL

**THIS UNIT LOAD IS AUTHORIZED
AND RELEASED FOR** DEPOT HANDLING
AND STORAGE AND FOR SHIPMENT BY COMMON CARRIER
IN COMPLIANCE WITH DOT REGULATIONS.

A.E. Kelly NWHL 10/28/66
SIGNATURE TECHNICAL DIRECTING ACTIVITY (TDA) DATE
R.E. Albrecht AIR-53442 11/3/66
SIGNATURE (AIR) () SYSCOM, BY DIRECTION DATE

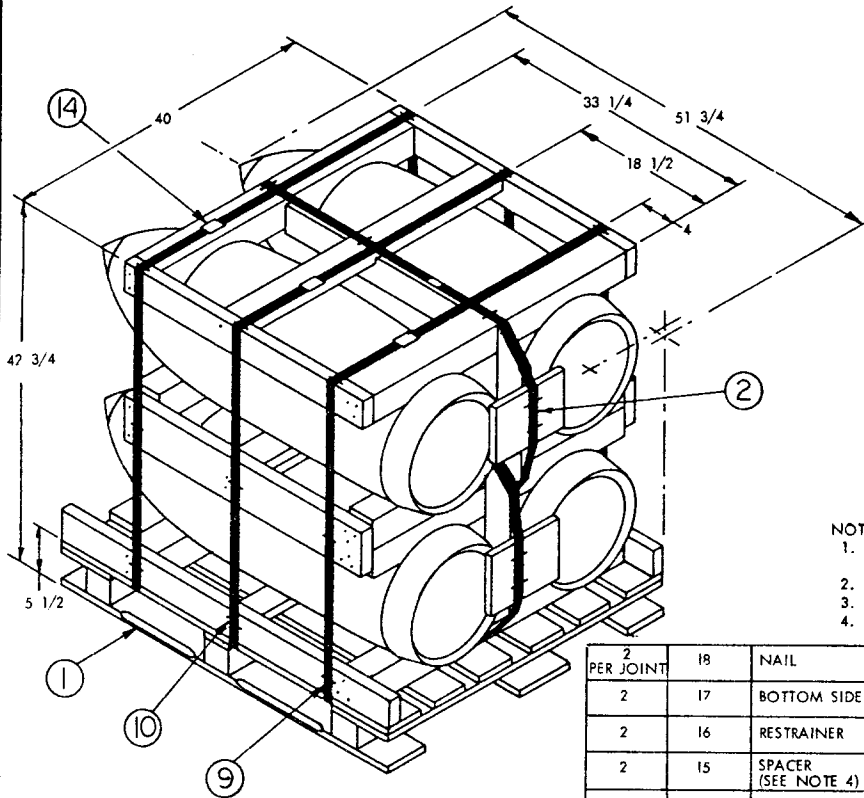
ORIGINATOR *C.P. Troutman* 10-28-66
SIGNATURE

NAVAL WEAPONS HANDLING LABORATORY
U.S.N.A.D. EARLE, NEW JERSEY

- (a) PLACE PREFABRICATED BOTTOM FRAME ON PALLET DECK, ITEM 1, AND SECURE WITH THREE 8d NAILS THROUGH LATERAL SPREADER, ITEM 8.
- (b) PLACE LONGITUDINAL STRAP, ITEM 2, ON PALLET DECK THROUGH SLOTS IN BOTTOM FRAME.
- (c) POSITION BOTTOM ROW OF BOMBS ON BOTTOM FRAME WITH EDGES OF BASE PROTECTING CAPS SNUG AGAINST THE BASE CHOCK.
- (d) PLACE PREFABRICATED INTERMEDIATE FRAME ON TOP OF BOMBS WITH BASE CHOCK SNUG AGAINST THE EDGES OF BASE PROTECTING CAPS.
- (e) POSITION LONGITUDINAL STRAP OVER SPACER ASSEMBLY AND INTERMEDIATE FRAME. TENSION AND DOUBLE CRIMP SEAL, ITEM 14. SECURE STRAP WITH STAPLES, ITEM 10. ON TOP OF FRAME AND ON SPACER ASSEMBLY AS SHOWN.
- (f) POSITION SECOND ROW OF BOMBS ON INTERMEDIATE FRAME WITH EDGES OF BASE PROTECTING CAPS SNUG AGAINST THE BASE CHOCK.
- (g) PLACE PREFABRICATED TOP FRAME ON SECOND ROW OF BOMBS WITH BASE CHOCK SNUG AGAINST THE EDGES OF BASE PROTECTING CAPS.
- (h) POSITION THE SECOND LONGITUDINAL STRAP UNDER THE INTERMEDIATE FRAME. OVER THE SPACER ASSEMBLY AND TOP FRAME, TENSION AND DOUBLE CRIMP SEAL. SECURE STRAP WITH STAPLES ON TOP FRAME AND SPACER ASSEMBLY.
- (i) POSITION LATERAL STRAP, ITEM 9, UNDER PALLET DECK AND AROUND THE UNIT LOAD. TENSION AND DOUBLE CRIMP SEAL. SECURE STRAPPING TO FRAMES WITH STAPLES.

MARKING:

IN ADDITION TO ANY SPECIAL MARKING REQUIRED BY CONTRACT OR ORDER, UNIT LOAD SHALL BE MARKED IN ACCORDANCE WITH MIL-STD-129.



NOTES:

- 1. WHEN PALLET M/L-P-15011 IS NOT AVAILABLE MIL-P-3938 MAY BE USED AS AN ALTERNATE PALLET.
- 2. .031 COLD ROLLED, HEAT TREATED MAY BE SUBSTITUTED.
- 3. 1 1/4 ACTUAL THICKNESS.
- 4. 3 3/8 ACTUAL WIDTH.

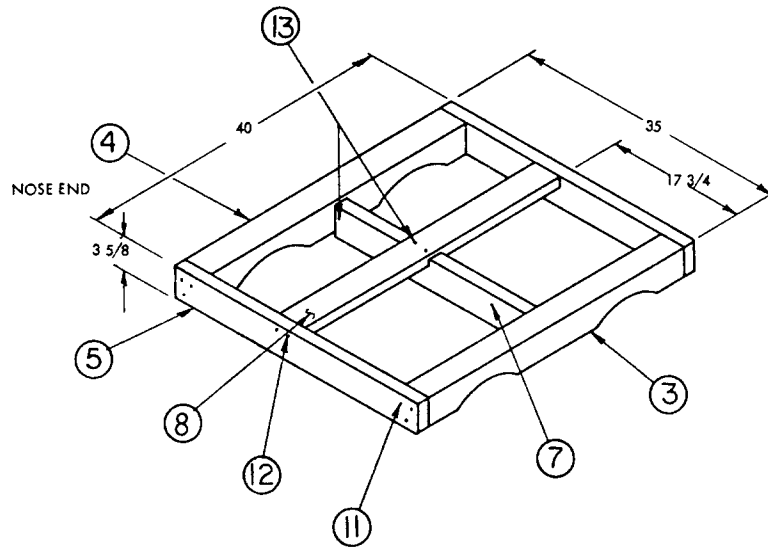
DEPALLETIZING PROCEDURE

- (a) REMOVE STAPLES.
- (b) CUT AND REMOVE STRAPPING.
- (c) REMOVE TOP FRAME AND SPACER ASSEMBLY.
- (d) REMOVE TOP ROW OF BOMBS.
- (e) REMOVE INTERMEDIATE FRAME AND SPACER ASSEMBLY.
- (f) REMOVE BOTTOM ROW OF BOMBS.
- (g) REMOVE BOTTOM FRAME AND PALLET.

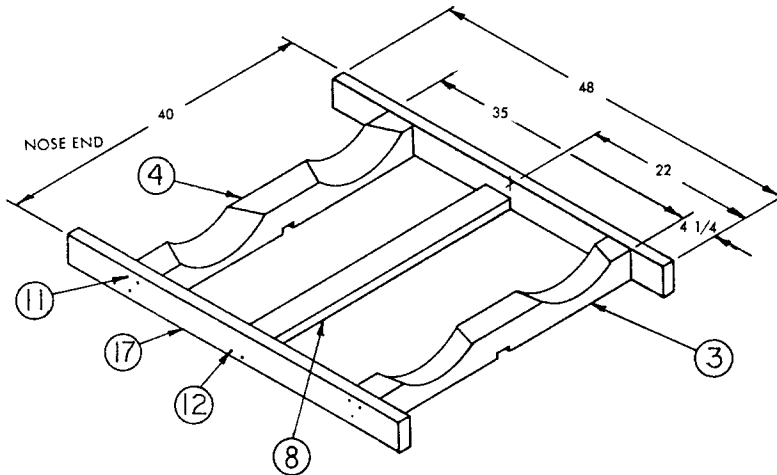
2 PER JOINT	18	NAIL	STEEL	FF-N-105 TY. II ST. 4	6d
2	17	BOTTOM SIDE PIECE	WOOD DRESSED	MIL-STD-73I	2 X 4 X 48
2	16	RESTRAINER	WOOD DRESSED	MIL-STD-73I	1 X 8 X 10
2	15	SPACER (SEE NOTE 4)	WOOD DRESSED	MIL-STD-73I	2 X 3 3/8 X 22
5	14	SEAL	STEEL ZINC COATED	COM'L	1 1/4 X 22GA. MIN
2 PER JOINT	13	NAIL	STEEL	FF-N-105 TY. II ST. 4	8d
2 PER JOINT	12	NAIL	STEEL	FF-N-105 TY. II ST. 4	16d
2 PER JOINT	11	NAIL	STEEL	FF-N-105 TY. II ST. 4	20d
AS REQ'D	10	STAPLE	STEEL CEMENT COATED	COM L	1 1/4
3	9	STRAPPING (SEE NOTE 2)	STEEL ZINC COATED	OO-S-78I TY. I CL. B	1 1/4 X .035 X 14 FT.
4	8	LATERAL SPREADER (SEE NOTE 3)	WOOD DRESSED	MIL-STD-73I	1 1/4 X 3 5/8 X 36 3/4
1	7	LONGITUDINAL SPREADER	WOOD DRESSED	MIL-STD-73I	2 X 4 X 27 3/4
2	6	INTERMEDIATE SIDE PIECE	WOOD DRESSED	MIL-STD-73I	2 X 6 X 35
2	5	TOP SIDE PIECE	WOOD DRESSED	MIL-STD-73I	2 X 4 X 35
4	4	NOSE CHOCK	WOOD DRESSED	MIL-STD-73I	4 X 4 X 36 3/4
4	3	BASE CHOCK	WOOD DRESSED	MIL-STD-73I	4 X 4 X 36 3/4
2	2	STRAPPING (SEE NOTE 2)	STEEL ZINC COATED	OO-S-78I TY. I CL. B	1 1/4 X .035 X 10 FT.
1	1	PALLET (SEE NOTE 1)	WOOD	MIL-P-15011	40 X 48
REQ.	ITEM	DESCRIPTION	MAT'L	MAT'L SPEC.	DIMENSIONS

LIST OF MATERIALS

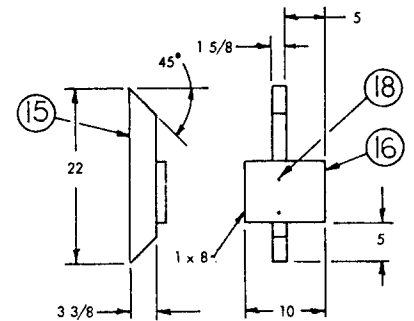
CONSTRUCTION DETAILS



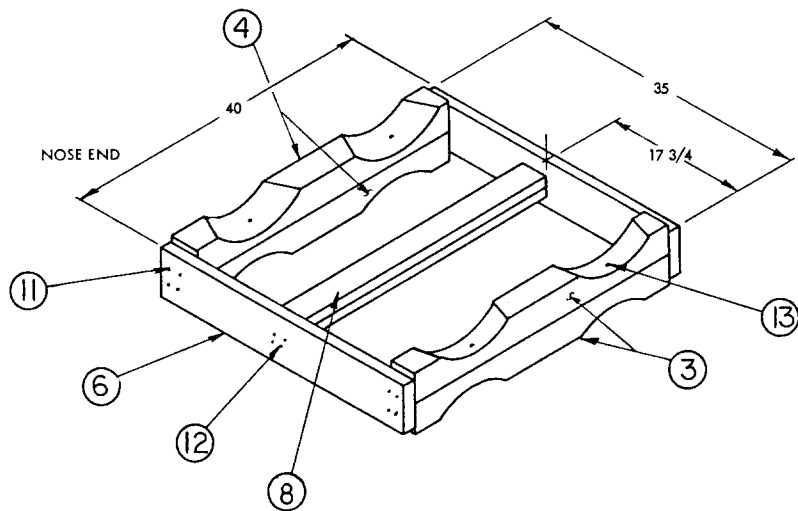
TOP FRAME ASS'Y



BOTTOM FRAME ASS'Y

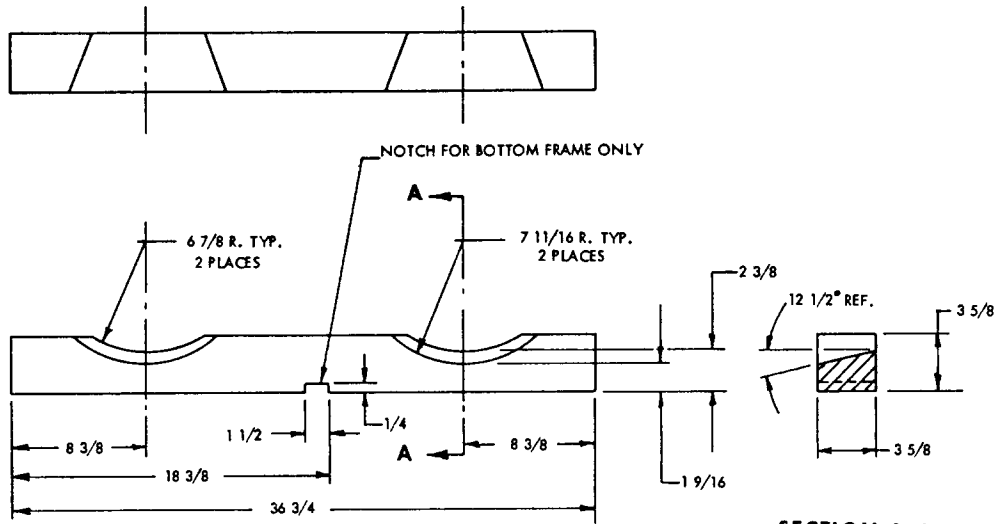


SPACER ASS'Y



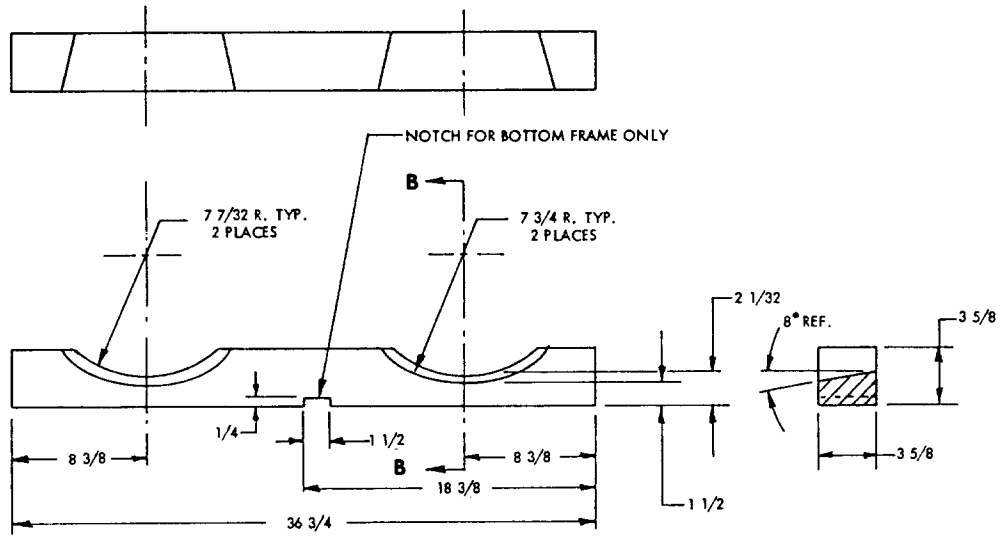
INTERMEDIATE FRAME ASS'Y

CONSTRUCTION DETAILS



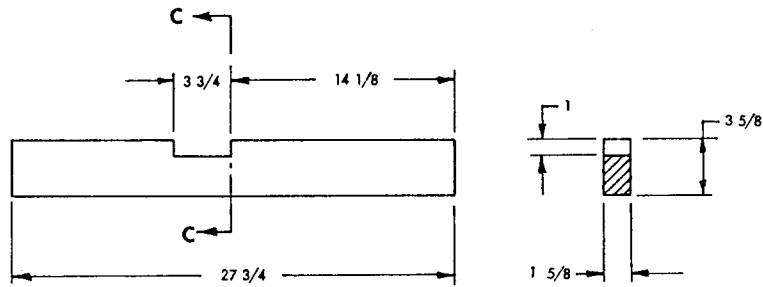
NOSE CHOCK DETAIL

SECTION A-A



BASE CHOCK DETAIL

SECTION B-B



LONGITUDINAL SPREADER

SECTION C-C