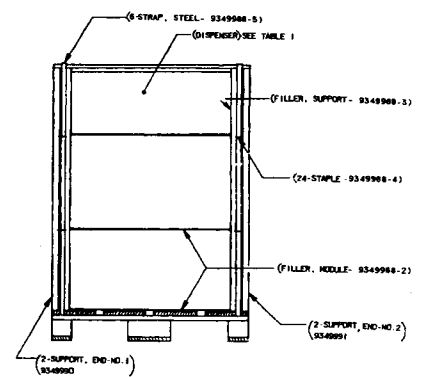
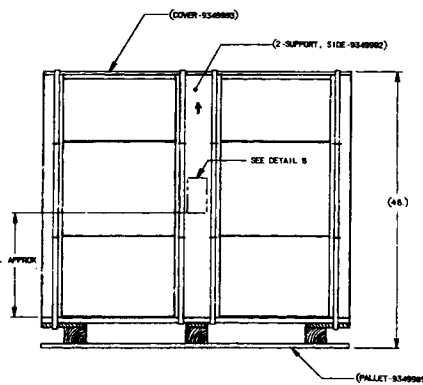
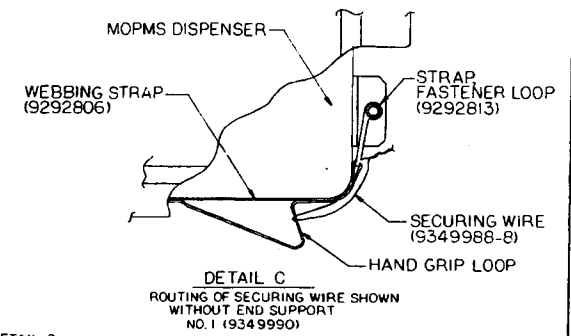
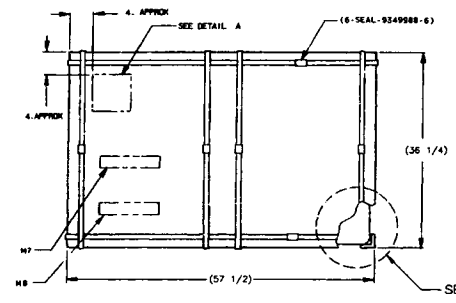
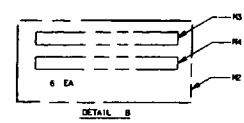
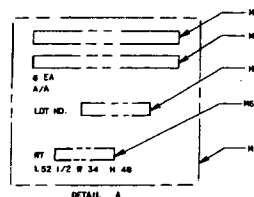


PACKAGING COMPONENTS

- COVER - 9349983
- FILLER - MCU - 9349988-1
12 1/4 X 24 1/4
NOTE 4
- FILLER - MODULE - 9349988-2
21 1/4 X 25 1/4
NOTE 5, 6
- FILLER - SUPPORT - 9349988-3
2 1/4 X 1 1/8 X 41 1/2 ± 1/4
NOTE 5, 6
- PALLET - 9349989
- 24 - STAPLES - 9349988-4
7/8 X 3/4 LEG
NOTE 7
- 6 - STRAPS - STEEL - 9349988-5
5/2 X .031 OR 126 THICK
LENGTH AS REQUIRED
NOTE 8
- 6 - SEALS - 9349988-6
3/4 SIZE
NOTE 9
- 2 - SUPPORT - END NO. 1 - 9349990
- 2 - SUPPORT - END NO. 2 - 9349991
- 2 - SUPPORT - SIDE - 9349992
- 12 - TAPE - 9349988-7
1 INCH WIDTH
LENGTH AS REQUIRED
NOTE 10
- 26 - WIRE SECURING - 9349988-8
LENGTH 3 1/2 ± 1/4
NOTE 11

PACKING INSTRUCTIONS

- P1 - LOOSEN SCREENS AND REMOVE COVER FROM BATTERY COMPARTMENT ON EACH MCU.
- P2 - FOLD MCU FILLER (9349988-1) SUFFICIENTLY FOR FILLER TO FIT INTO COMPARTMENT. INSERT FILLER AND INSURE CONNECTOR DOES NOT MOVE FREELY.
- P3 - PLACE COVER ON EACH COMPARTMENT AND TIGHTEN SCREENS.
- P4 - PLACE FOUR MODULE FILLERS, (9349988-2) ON PALLET BASE (9349989). TWO IN A STACK ON LEFT SIDE OF PALLET BASE AND TWO IN A STACK ON RIGHT SIDE OF PALLET BASE. POSITION FILLERS APPROXIMATELY 1 3/4 INCHES FROM EACH SIDE AND END. SECURE HANDLES TOGETHER ON EACH SIDE OF DISPENSER (6 TOTAL) WITH TAPE (9349988-7). WRAP A MINIMUM OF 2 TIMES TO JOIN HANDLES IN THE CENTER OF WHERE THE HANDLES OVERLAP.
- P5 - PLACE TWO DISPENSERS, SIDE BY SIDE, ON TOP OF FILLERS. ORIENT DISPENSERS WITH MCU FACING EACH OTHER.
- P6 - LAY TWO ADDITIONAL MODULE FILLERS (TOTAL FOUR) AS IN P5 ON TOP OF EACH DISPENSER.
- P7 - PLACE TWO DISPENSERS, SIDE BY SIDE, ON TOP OF FILLERS IN THE SAME ORIENTATION AS IN P6.
- P8 - SECURE EACH STRAP, WEAVING (9329208), 2 STRAPS PER DISPENSER, 6 DISPENSERS TOTAL, CLOSE TO THE DISPENSER BY PASSING A WIRE, SECURING (9349988-8) THROUGH EACH HAND GRIP LOOP OF THE SECURING STRAP AND THROUGH THE LOOP, STRAP FASTENER (93292813) OF THE CORRESPONDING END OF THE WEAVING STRAP. SEE DETAIL C. PULL EACH SECURING WIRE TIGHT AND TWIST THE TWO ENDS TOGETHER A MINIMUM OF THREE TIMES TO HOLD THE SECURING STRAP IN PLACE. AFTER THE LAST TWIST, MATERIAL IN EXCESS OF APPROXIMATELY 1/2 INCH SHALL BE REMOVED.
- P9 - REPEAT P7 AND P8.
- P10 - OLEASE ONE SUPPORT FILLER (9349988-3) AGAINST INSIDE SURFACE OF EACH (2) SIDE SUPPORT (9349990) AND ONE SUPPORT FILLER AGAINST INSIDE SURFACE OF EACH (4) END SUPPORT (9349990 AND 9349991). INSURE FILLERS DO NOT INTERFERE WITH NOTCHED CUTOUTS ON SUPPORTS.
- P11 - PROPERLY POSITION SIDE SUPPORT WITH FILLERS, ARROW POINTING UP, AGAINST DISPENSERS.
- P12 - PLACE ADDITIONAL MODULE FILLERS, ARROW POINTING UP, AGAINST DISPENSERS.
- P13 - PROPERLY POSITION END SUPPORTS (WITH FILLERS) ARROW POINTING UP WITH CORRESPONDING NUMBERS ON COVER. INSERT END SUPPORTS BETWEEN COVER AND PALLET BASE.
- P14 - VERIFY PALLET COVER DOES NOT REST ON MODULE FILLERS. UNDER NO CIRCUMSTANCES SHALL COVER REST ON FILLERS.
- P15 - STRAP AND SEAL PALLET AS SHOWN.



- NOTES:-**
1. SPEC MIL-A-255C APPLIES.
 2. MATERIAL:- 1IN. STENCIL, BLACK NO. 37038, TYPE II OR III, SPEC 13-1-1195.
 3. ALTERNATIVE MATERIAL: 1IN. PRINTERS, BLACK, DNO 9273747.
 4. MATERIAL:- PLASTIC SHEET, FLEXIBLE, ELECTROSTATIC-FREE TYPE II SPEC MIL-R-81705.
 5. MATERIAL:- FIBERBOARD, TYPE SF (SOLID), CLASS-WEATHER RESISTANT, GRADE V3, SPEC PPP-F-320.
 6. ALTERNATIVE MATERIAL:- FIBERBOARD, TYPE SF (SOLID), CLASS-WEATHER RESISTANT, GRADE V4, SPEC PPP-F-320.
 7. MATERIAL:- STAPLES, STYLE 3, TYPE III, SPEC PF-N-105.
 8. MATERIAL:- STRAPPING, STEEL, CLASS 1-FLAT, TYPE 1, HEAVY DUTY, FINISH A, SPEC QQ-S-781.
 9. MATERIAL:- SEAL, TYPE D, STYLE 1, CLASS M, FINISH A, SPEC QQ-S-781.
 10. MATERIAL:- TAPE, PRESSURE-SENSITIVE, TYPE 1, SPEC MIL-T-40306 OR SPEC ASTM-D5330.
 11. MATERIAL:- WIRE, ELECTRICAL, INSULATED, 22 AMERICAN WIRE GAGE, (SOLID) STRAND, COATED COPPER, BLACK, PART NUMBER M167871-8FAD, SPECIFICATION MIL-W-18078/L.

MARKING INSTRUCTIONS

- M1 - MARKING SHALL BE IN LETTERS AND FIGURES 1 INCH HIGH USING 1IN. NOTE 2 OR 3.
- M2 - MARKING SHALL BE IN LETTERS AND FIGURES 1/4 INCH HIGH USING 1IN. NOTE 2 OR 3.
- M3 - INSERT APPROPRIATE NSN/DDIC (SEE TABLE II).
- M4 - INSERT APPROPRIATE DESCRIPTIVE NOMENCLATURE. (SEE TABLE II).
- M5 - INSERT APPROPRIATE LOT NO.
- M6 - INSERT APPROPRIATE HEIGHT (SEE TABLE I).
- M7 - INSERT PROPER SHIPPING NAME AND IDENTIFICATION NUMBER (FROM ENTRIES TABLE II).
- M8 - INSERT COMPETENT AUTHORITY APPROVAL NUMBER-CA-9201006.

REFERENCE DATA

CUBIC DISPLACEMENT 49.1 CUBIC FT.
FOR DISPENSER AND WIRE, GROUND: M131 SEE DWG 9337906.
FOR DISPENSER, GROUND, PRACTICE: M136 SEE DWG 9337950.

LINE NO.	HEIGHTS (ESTIMATED)	
	PARTS	POUNDS
1	MOPMS DISPENSER (6)	960 960
2	PALLET BASE, COVER, SUPPORTS	140 140
TOTAL		1100 970

LINE NO.	DESCRIPTIVE NOMENCLATURE	PSN/AFN	PART NO.	NSN/DDIC
1	DISPENSER AND WIRE, GROUND: M131	W485 UN0437	9337506	1345-01-180-8308/NO22
2	DISPENSER, GROUND, PRACTICE: M136		9337950	1345-01-182-9380/NO24

PART NO. 9349988

U.S. ARMY AMMUNITION RESEARCH AND DEVELOPMENT CENTER
MILITARY INVENTION CENTER
PACKING AND MARKING FOR DISPENSER AND WIRE, GROUND: M131 AND DISPENSER, GROUND, PRACTICE: M136

DATE: 82-04-02
BY: [Signature]
CHECKED: [Signature]
APPROVED: [Signature]

SCALE: 1/8" = 1"

MECHANICAL PROPERTIES		DO NOT SCALE DRAWING UNLESS OTHERWISE SPECIFIED		TOLERANCES ON DIMENSIONS	
UT	UT	FRAC	FRAC	FRAC	FRAC
TE	TE	DEC	DEC	DEC	DEC
IN	IN	ANG	ANG	ANG	ANG
WH	WH	ANG	ANG	ANG	ANG
WH	WH	ANG	ANG	ANG	ANG
WH	WH	ANG	ANG	ANG	ANG

DISTRIBUTION STATEMENT A
APPROVED FOR PUBLIC RELEASE;
DISTRIBUTION IS UNLIMITED.