

Code Ident.  
10001

Naval Ordnance Systems Command  
Department of the Navy

WR-53/702  
Change Notice 1  
28 January 1969

WEAPONS REQUIREMENT, PALLETIZING  
DOMESTIC UNIT LOAD  
500 LB. LOW DRAG BOMB (G. P.) MK 82 & MODS  
WITH METAL OR PLASTIC NOSE PLUGS

TO: WR-53 Distribution

Make the following pen and ink changes:

Page 1

Under UNIT LOAD DATA

Add Do not stack more than

5 unit loads high in storage.

Add Class A Explosives.

In the ASSOCIATED PROCESS BLOCK

Add WR-51/35 TOFC & COFC Truckloading

Add WR-51/36 Regular Truckloading

Add WR-52/76 Carloading

In THIS UNIT LOAD IS AUTHORIZED AND RELEASED FOR

Change Stowage to Storage and

Change ICC Regulations to DOT Regulations.

Page 2

Under PALLETIZING PROCEDURE

Add Marking:

In addition to any special marking required by contract or  
order, unit load shall be marked in accordance with MIL-STD-129.

In LIST OF MATERIALS

Change Item 11 Nail, Standard Box to 16d.

WR-53/702  
Change Notice 1  
28 January 1969  
Page 2 (Continued)

Page 2

In LIST OF MATERIALS

Change Item 7 Longitudinal Spreader to 2X3X40 3/4

Page 3

Delete - Note 1: When Protrusion of Piece 7 in Bottom Frame  
Interferes with Palletizing Method, width of this Longitudinal  
Spreader may be reduced to 2 5/8.

Code Ident  
10001

Naval Ordnance Systems Command  
Department of the Navy

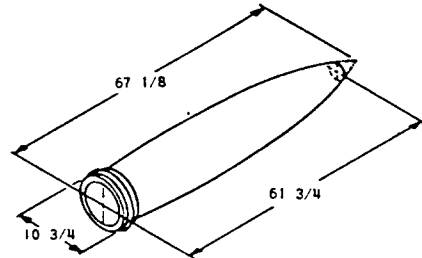
WR-53/702

8 December 1966

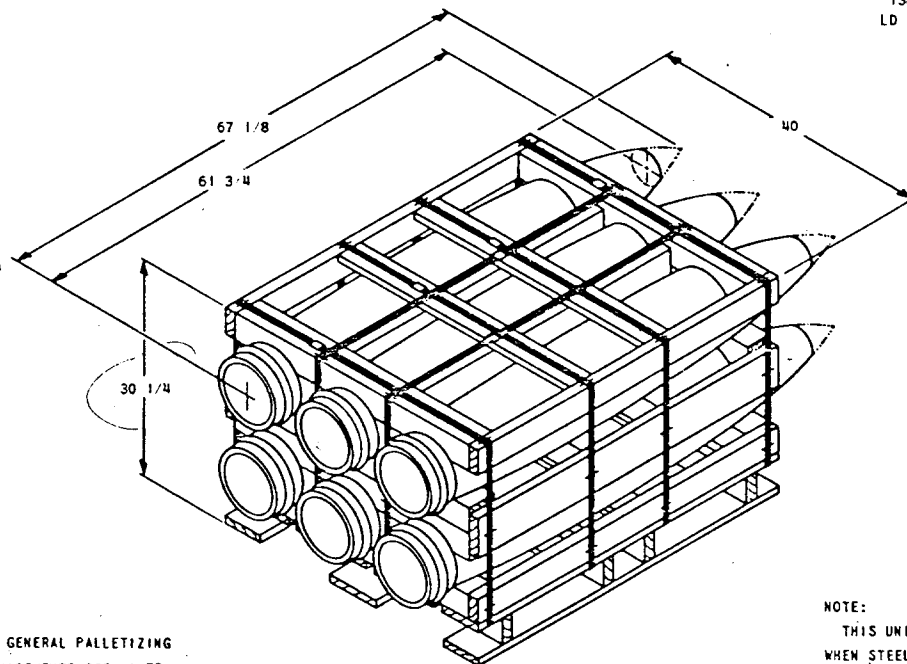
**WEAPONS REQUIREMENT, PALLETIZING  
DOMESTIC UNIT LOAD  
500 LB. LOW DRAG BOMB (G.P.) MK 82 & MODS  
WITH METAL OR PLASTIC NOSE PLUGS**

**UNIT LOAD DATA**

GROSS WEIGHT OF ONE BOMB.....493 LBS.  
NUMBER OF BOMBS PER UNIT LOAD.....6  
WEIGHT OF PALLET AND DUNNAGE.....142 LBS.  
WEIGHT OF UNIT LOAD.....3100 LBS.  
CUBE (WITH METAL NOSE PLUGS).....47.0 CU. FT.  
CUBE (WITH PLASTIC NOSE PLUGS).....43.2 CU. FT.



1380545  
LD 165796



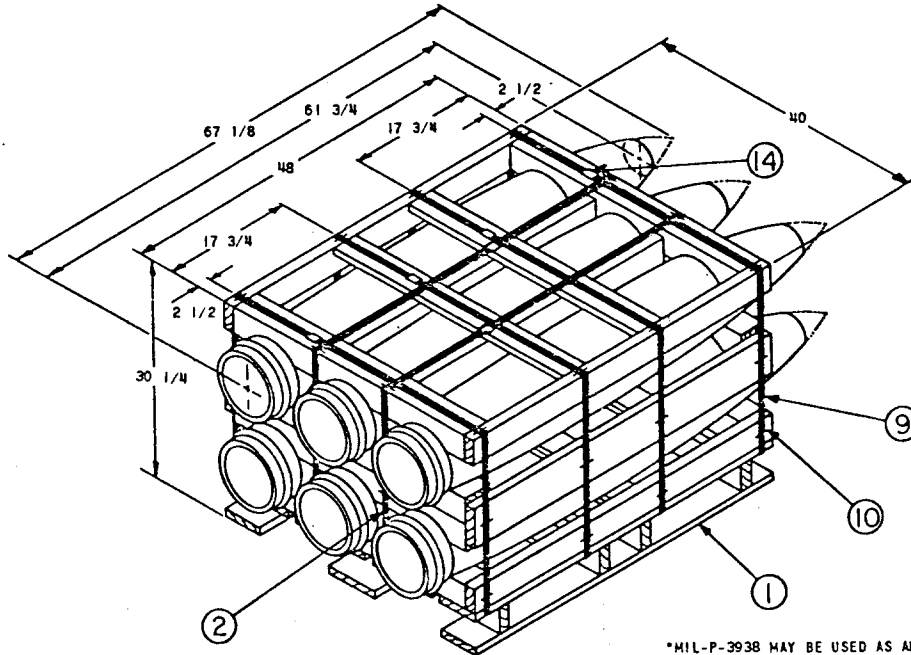
FOR GENERAL PALLETIZING  
REQUIREMENTS SEE WR-53  
UNLESS OTHERWISE SPECIFIED  
DIMENSIONS ARE IN INCHES

NOTE:  
THIS UNIT LOAD SHALL ONLY BE USED  
WHEN STEEL BOMB PALLETS MK 9 MOD 0  
ARE NOT AVAILABLE.  
FOR FLEET ISSUE UNIT LOAD USE  
WR-54/31.

WR NO.	ASSOCIATED PROCESS	REV LTR	REVISION DESCRIPTION	DATE	TDA	SYSCOM	APPROVAL
<b>THIS UNIT LOAD IS AUTHORIZED AND RELEASED FOR DEPOT HANDLING AND STORAGE AND FOR SHIPMENT BY COMMON CARRIER IN COMPLIANCE WITH ICC REGULATIONS.</b>		<b>THIS DOCUMENT IS NOT CONTROLLED. ITS CURRENTNESS IS ASSURED THROUGH THE RESPONSIBILITY TO ASSURE THE VALIDITY OF THIS DOCUMENT.</b>					
SIGNATURE <i>J. E. Kelly</i> [AIR] 53442A 10/25/66		ORIGINATOR <i>[Signature]</i> 10/13/66					
SIGNATURE [AIR] 53442A 10/25/66		NAVAL WEAPONS HANDLING LABORATORY U.S.N.A.D. EARLE, NEW JERSEY					
		PAGE 1 OF 4					

PALLETIZING PROCEDURE

- (a) PLACE LONGITUDINAL STRAPPING, PC. 2, ON PALLET DECK, PC. 1.
- (b) PLACE PREFABRICATED BOTTOM FRAME ON PALLET DECK AND CENTER LONGITUDINAL STRAPPING BETWEEN SCALLOPS.
- (c) POSITION BOTTOM ROW OF BOMBS ON BOTTOM FRAME WITH EDGES OF BASE PROTECTING CAPS SNUG AGAINST THE BASE CHOCK.
- (d) PLACE PREFABRICATED INTERMEDIATE FRAME ON TOP OF BOMBS WITH BASE CHOCK SNUG AGAINST THE EDGES OF BASE PROTECTING CAPS.
- (e) POSITION SECOND ROW OF BOMBS ON INTERMEDIATE FRAME WITH EDGES OF BASE PROTECTING CAPS SNUG AGAINST THE BASE CHOCK.
- (f) PLACE PREFABRICATED TOP FRAME ON THE SECOND ROW OF BOMBS WITH BASE CHOCK SNUG AGAINST THE EDGES OF BASE PROTECTING CAPS.
- (g) POSITION LATERAL STRAPPING, PC. 9, UNDER PALLET DECK AND AROUND UNIT LOAD, TENSION AND DOUBLE CRIMP SEAL, PC. 14.
- (h) POSITION LONGITUDINAL STRAPPING AROUND THE UNIT LOAD, TENSION AND DOUBLE CRIMP SEAL.
- (i) SECURE STRAPPING TO FRAMES WITH STAPLES, PC. 10.



DEPALLETIZING PROCEDURE

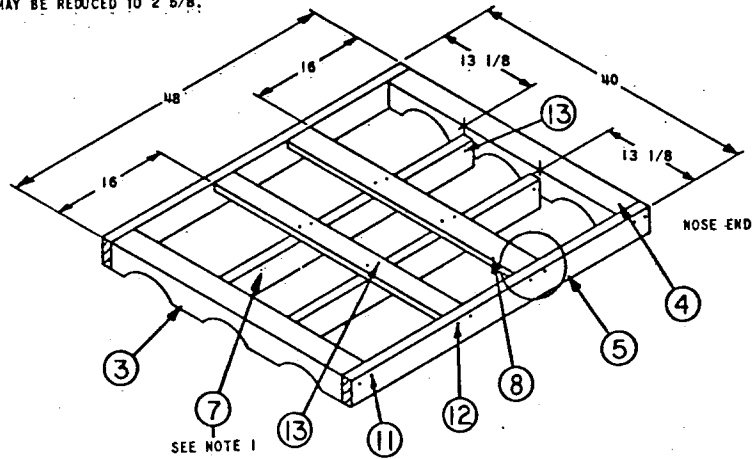
- (a) REMOVE STAPLES.
- (b) CUT AND REMOVE STRAPPING.
- (c) REMOVE TOP FRAME.
- (d) REMOVE TOP ROW OF BOMBS.
- (e) REMOVE INTERMEDIATE FRAME.
- (f) REMOVE BOTTOM ROW OF BOMBS.
- (g) REMOVE BOTTOM FRAME AND PALLET.

REQ.	ITEM	DESCRIPTION	MAT'L	MAT'L SPEC.	DIMENSIONS
2	15	LATERAL SPREADER	WOOD DRESSED	MIL-STD-731	2 x 4 x 36 3/4
6	14	SEAL	STEEL ZINC COATED	COML	1 1/4 x 22 GA. MIN.
2 PER JOINT	13	NAIL STANDARD BOX	STEEL	FF-N-105	8d
2 PER JOINT	12	NAIL STANDARD BOX	STEEL	FF-N-105	10d
2 PER JOINT	11	NAIL STANDARD BOX	STEEL	FF-N-105	20d
AS REQ.	10	STAPLE	STEEL CEMENT COATED	COML	1 1/4
4	9	LATERAL STRAPPING	STEEL ZINC COATED	00-S-781 TY. 1 CL. B	1 1/4 x .035 x 12 FT.
4	8	LATERAL SPREADER	WOOD DRESSED	MIL-STD-731	1 x 4 x 36 3/4
4	7	LONGITUDINAL SPREADER	WOOD DRESSED	MIL-STD-731	2 x 4 x 40 3/4
2	6	INTERMEDIATE SIDE PIECE	WOOD DRESSED	MIL-STD-731	2 x 6 x 48
4	5	TOP AND BOTTOM SIDE PIECE	WOOD DRESSED	MIL-STD-731	2 x 4 x 48
4	4	NOSE CHOCK	WOOD DRESSED	MIL-STD-731	4 x 4 x 36 3/4
4	3	BASE CHOCK	WOOD DRESSED	MIL-STD-731	4 x 4 x 36 3/4
2	2	LONGITUDINAL STRAPPING	STEEL ZINC COATED	00-S-781 TY. 1 CL. B	1 1/4 x .035 x 13 FT.
1	1	PALLET	WOOD	MIL-P-15011 *	40 x 48 x 5 1/2

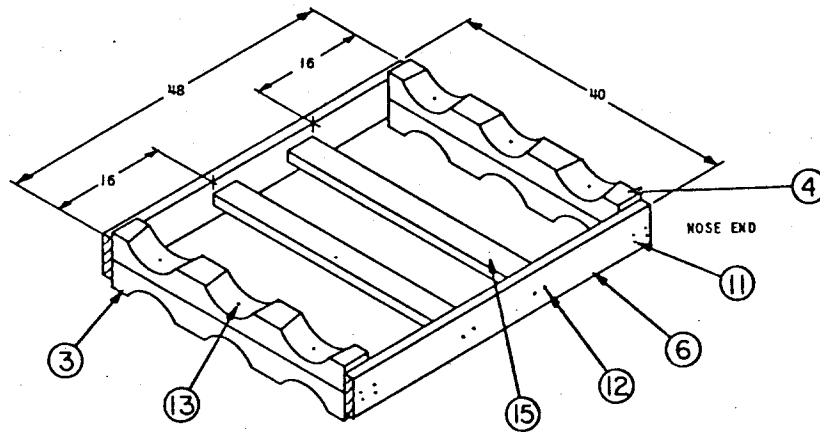
LIST OF MATERIALS

### CONSTRUCTION DETAILS

NOTE 1: WHEN PROTRUSION OF PIECE 7 IN BOTTOM FRAME INTERFERES WITH PALLETIZING METHOD, WIDTH OF THIS LONGITUDINAL SPREADER MAY BE REDUCED TO 2 5/8".

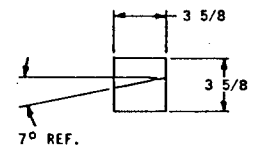
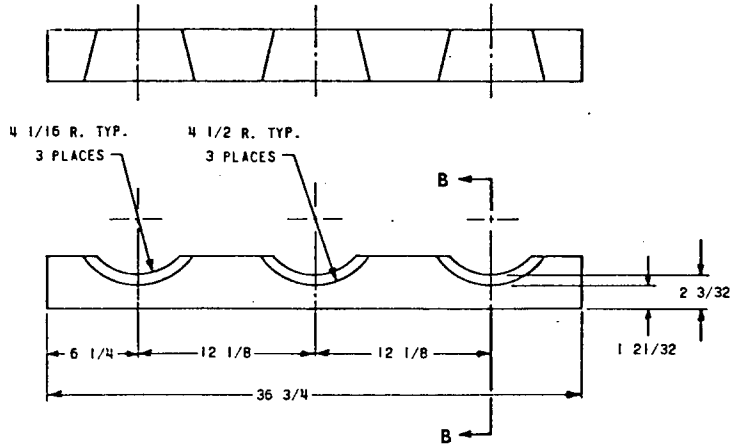


TOP AND BOTTOM FRAME ASSEMBLY



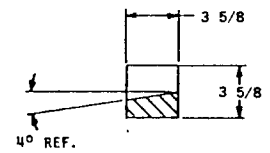
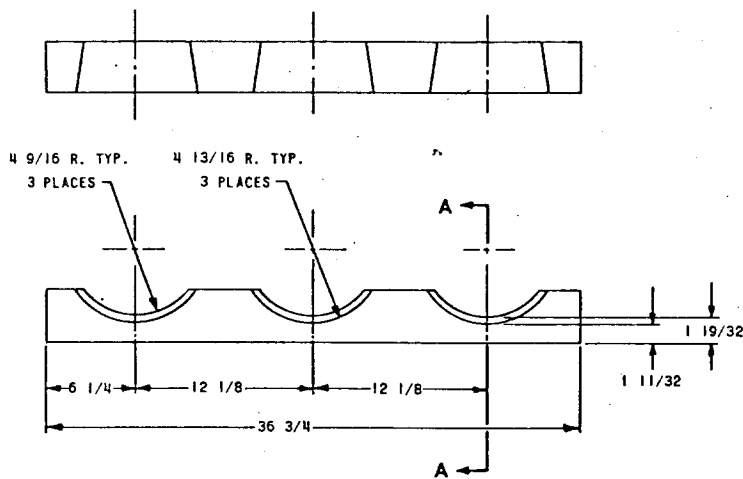
INTERMEDIATE FRAME ASSEMBLY

CONSTRUCTION DETAILS



SECTION B-B

NOSE CHOCK DETAIL



SECTION A-A

BASE CHOCK DETAIL