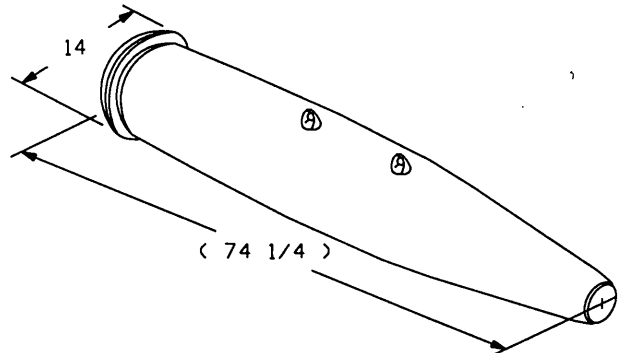


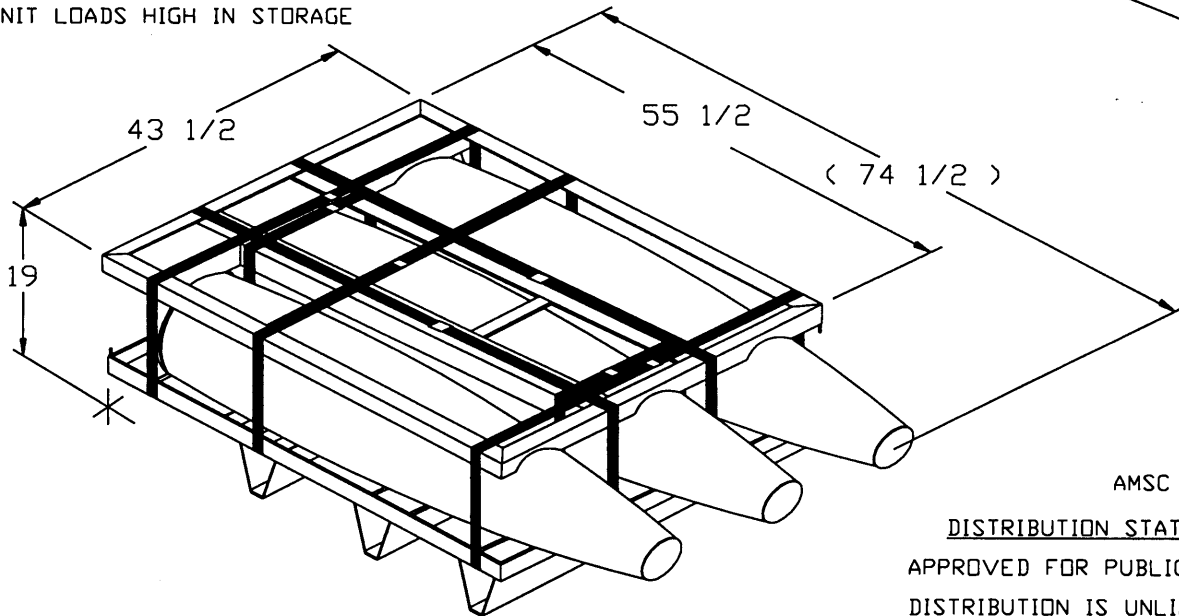
MILITARY STANDARD
 UNIT LOAD
 FOR UNDERWAY REPLENISHMENT
 BOMB, GENERAL PURPOSE: 1000 LB. MK 83 AND MODS,
 ON BOMB PALLET MK 11 MOD 0, ADL 1279631

MIL-STD-1323-35
 (NAVY)
 30 JULY 1997
 SUPERSEDING
 WR-54/35B
 5 MARCH 1981

UNIT LOAD DATA DDDIC/NALC NO. E511, F254
 NUMBER OF BOMBS PER UNIT LOAD..... 3
 GROSS WEIGHT OF ONE BOMB..... 991.7 LBS.
 WEIGHT OF BOMB PALLET..... 200 LBS.
 GROSS WEIGHT OF UNIT LOAD..... 3175.1 LBS. Δ
 CUBE..... 35.6 CU/FT.



Δ DO NOT USE FOR SHIPPING WEIGHT
 FOR HAZARD CLASSIFICATION SEE SW020-AC-SAF-010
 DDDIC/NALC E511 & F254 ARE INERT
 DO NOT STACK MORE THAN
 9 UNIT LOADS HIGH IN STORAGE



AMSC NO. - N/A

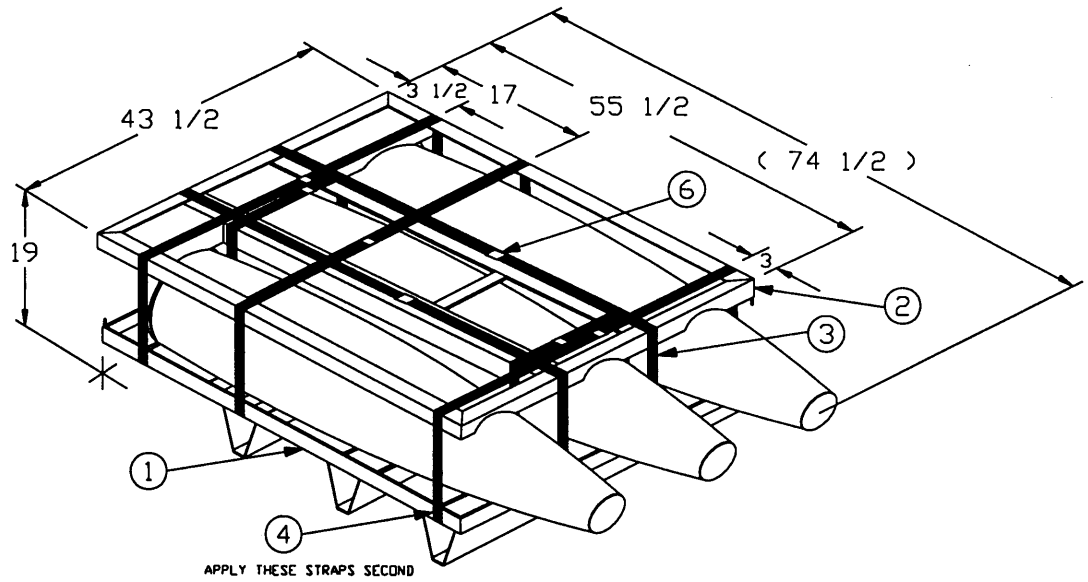
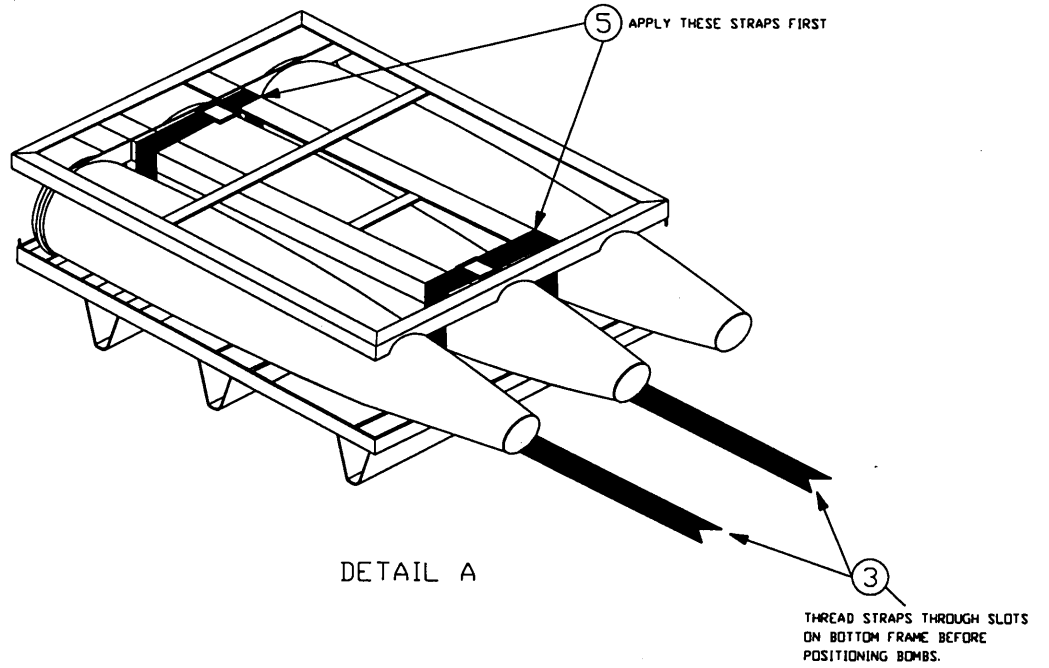
DISTRIBUTION STATEMENT A
 APPROVED FOR PUBLIC RELEASE:
 DISTRIBUTION IS UNLIMITED.

NOTES:

1. UNLESS OTHERWISE SPECIFIED, DIMENSIONS ARE IN INCHES.
2. FOR CROSS REFERENCE TO ASSOCIATED TRUCKLOADING, CONTAINERLOADING AND CARLOADING MILITARY STANDARDS, REFER TO INDEX TO STANDARDS,

REV	REVISION DESCRIPTION	DATE	TDA	SYSCOM	MIL-HDBK-236 (NAVY).	FSC 8140
THIS UNIT LOAD IS AUTHORIZED AND RELEASED FOR SHIPPING, HANDLING, STORAGE AND TRANSFER-AT-SEA. IT MAY ALSO BE USED FOR DOMESTIC SHIPMENT IN COMPLIANCE WITH DOT REGULATIONS.					REQUIREMENTS FOR CONSTRUCTION OF THIS UNIT LOAD SHALL CONSIST OF THIS DOCUMENT AND THE LATEST ISSUE OF MIL-STD-1323 (NAVY).	
SIGNATURE <i>[Signature]</i> TDA, NWHC, WPNSTA EARLE DATE 7/30/97 SIGNATURE <i>[Signature]</i> NAVAIRSYSCOM BY DIRECTION DATE 7/31/97					ORIGINATOR <i>[Signature]</i> DATE 7/31/97 WPNSTA EARLE, NEW JERSEY	
					PAGE 1 OF 3	

PALLETIZING DETAILS



PALLETIZING PROCEDURE

- (a) THREAD LONGITUDINAL STRAPPING, ITEM 3, THROUGH SLOTS IN THE BOTTOM FRAME, ITEM 1.
- (b) PLACE THE CENTER BOMB ON THE BOTTOM FRAME WITH THE SUSPENSION LUGS DOWN, IN EITHER THE 5 O'CLOCK OR THE 7 O'CLOCK POSITION, AND THE BASE END SNUG AGAINST RIM OF FRAME AT THE AFT END. SEE NOTE*
- (c) POSITION THE SECOND BOMB ON THE LEFT SIDE OF THE BOTTOM FRAME, WITH THE SUSPENSION LUGS DOWN IN THE 7 O'CLOCK POSITION, POINTING OUTBOARD AND BASE END SNUG AGAINST RIM OF FRAME AT THE AFT END. SEE NOTE*
- (d) POSITION THE THIRD BOMB ON THE RIGHT SIDE OF THE BOTTOM FRAME, WITH THE SUSPENSION LUGS DOWN IN THE 5 O'CLOCK POSITION, POINTING OUTBOARD AND THE BASE END SNUG AGAINST RIM OF FRAME AT THE AFT END. SEE NOTE*
- (e) POSITION THE TOP FRAME, ITEM 2, OVER THE BOMBS WITH THE AFT END SNUG AGAINST THE BASE END OF THE BOMBS.
- (f) POSITION THE INTERMEDIATE STRAPPING, ITEM 5, AS SHOWN IN DETAIL A ON PAGE 2. POSITION THE STRAPPING UNDER THE CENTER ANGLES OF THE BOTTOM FRAME AND AROUND THE CENTER ANGLES OF THE TOP FRAME, TENSION AND DOUBLE NOTCH SEAL, ITEM 6.
- (g) POSITION THE LATERAL STRAPPING, ITEM 4, UNDER THE BOTTOM FRAME, AS SHOWN IN DETAIL B ON PAGE 2 AND OVER THE TOP FRAME, TENSION AND DOUBLE NOTCH SEAL, ITEM 6.
- (h) POSITION THE LONGITUDINAL STRAPPING, ITEM 3, AROUND THE UNIT LOAD, TENSION AND DOUBLE NOTCH SEAL, ITEM 6.

MARKING:

IN ADDITION TO ANY SPECIAL MARKING REQUIRED BY CONTRACT OR ORDER, THE UNIT LOAD SHALL BE MARKED IN ACCORDANCE WITH MIL-STD-129.

DEPALLETIZING PROCEDURE

- (a) CUT AND REMOVE STRAPPING.
- (b) REMOVE THE TOP FRAME.
- (c) REMOVE THE THREE BOMBS.
- (d) POSITION THE TOP FRAME ON THE BOTTOM FRAME.

* NOTE:

WHEN REPALLETIZING BOMBS, THE SUSPENSION LUGS MAY BE LOCATED AT THE 1 TO 2 O'CLOCK OR 10 TO 11 O'CLOCK POSITION.

UNLESS OTHERWISE SPECIFIED, ALL MATERIALS SHALL BE IAW MIL STD-1323 (NAVY)

7	6	SEAL	STEEL	1 1/4
2	5	STRAP, INTERMEDIATE	STEEL	1 1/4 X .035 X 5 FT 6 IN
3	4	STRAP, LATERAL	STEEL	1 1/4 X .035 X 10 FT 6 IN
2	3	STRAP, LONGITUDINAL	STEEL	1 1/4 X .035 X 12 FT 6 IN
1	2	FRAME, TOP	10001-1579710	43 1/2 X 55 1/2
1	1	FRAME, BOTTOM	10001-2086418	43 1/2 X 55 1/2
REQ	ITEM	DESCRIPTION	MAT/DWG	DIMENSIONS

LIST OF MATERIALS

REVIEW ACTIVITY:
NAVY-OS, AS

PREPARING ACTIVITY:
NAVY AS, OS
(PROJECT NO. 8140-0180)