

Code Ident.
10001

Naval Sea Systems Command
Department of the Navy

WR-54/140B
Change Notice 1
3 September 1982

WEAPONS REQUIREMENT, PALLETIZING
FLEET ISSUE UNIT LOAD
DISPENSER AND BOMB, AIRCRAFT CBU-MK 20 & MODS (ROCKEYE II)
IN CONTAINER MK 427 MOD 0

Make the following pen and ink changes:

Page 1.

Title block. Add "and CBU-78/B (GATOR)".

Distribution
WR-54

Preparing Activity
WPNSTA Earle (NWHC)

Code Ident
10001

Naval Ordnance Systems Command
Department of the Navy

WR-54/140B

31 JANUARY 1974

SUPERSEDING WR-54/140A

3 MARCH 1969

**WEAPONS REQUIREMENT, PALLETIZING
FLEET ISSUE UNIT LOAD
DISPENSER AND BOMB, AIRCRAFT CBU-MK 20 & MODS (ROCKEYE II)
IN CONTAINER MK 427 MOD 0**

UNIT LOAD DATA

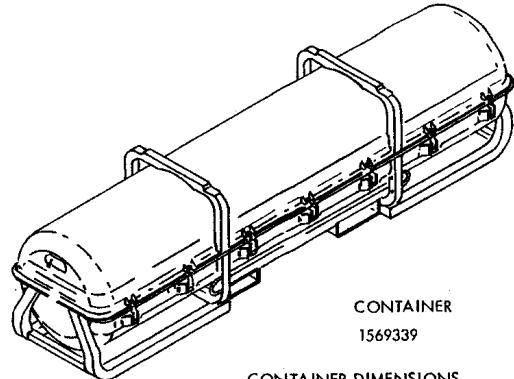
DODIC/NALC NO. E 173
E 819
NUMBER OF DISPENSERS PER CONTAINER 1
NUMBER OF CONTAINERS PER UNIT LOAD 4
NUMBER OF DISPENSERS PER UNIT LOAD 4
GROSS WEIGHT OF ONE CONTAINER (APPROX.) 915 LBS
WEIGHT OF RESTRAINER (APPROX.) 40 LBS
GROSS WEIGHT OF UNIT LOAD (APPROX.) 3700 LBS *
CUBE 141.3 CU FT

* DO NOT USE FOR SHIPPING PURPOSES

DO NOT STACK MORE THAN
3 UNIT LOADS HIGH IN STORAGE

HAZARD CLASSIFICATION

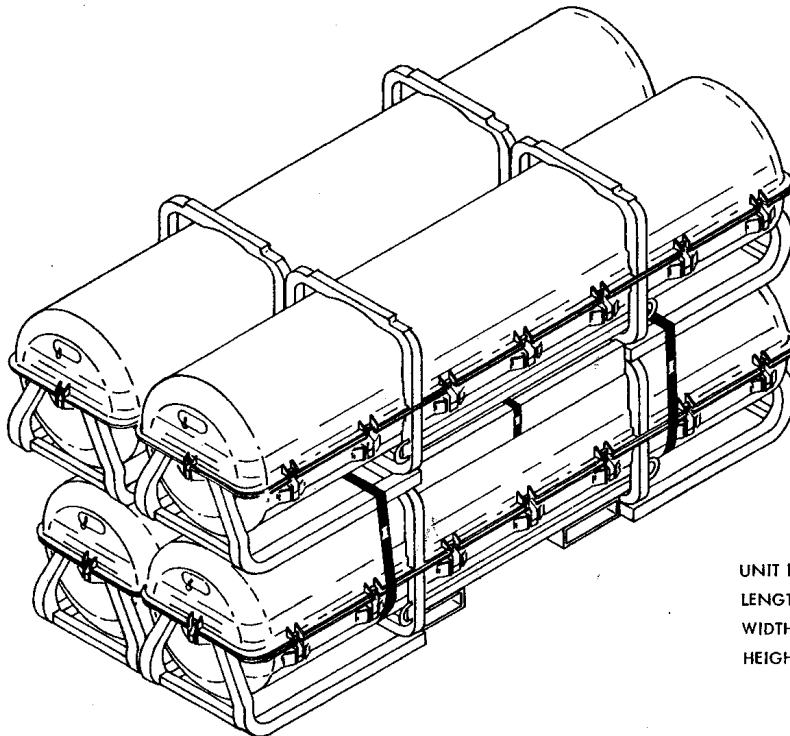
DOT - CLASS A
C G - CLASS VII



CONTAINER
1569339

CONTAINER DIMENSIONS

LENGTH 102 17/32
WIDTH 23 5/32
HEIGHT (OVERALL) 25 31/32
(STACKING) 25 17/32



UNIT LOAD DIMENSIONS

LENGTH 102 17/32
WIDTH 46 5/16
HEIGHT 51 1/2 OVERALL

FOR GENERAL PALLETIZING
REQUIREMENTS SEE WR-54

UNLESS OTHERWISE SPECIFIED
DIMENSIONS ARE IN INCHES

SEE MIL-HDBK-236 (NAVY) "INDEX TO STANDARDS" FOR APPLICABLE TRUCKLOADING, CARLOADING AND CONTAINER LOADING DOCUMENTS.		B	REPLACED WITH CHANGE, TITLE CHGD, ADDED RESTRAINER INSTALLATION DETAIL AND UP-DATED WR	<i>[Signature]</i>	<i>[Signature]</i>	<i>[Signature]</i>
WR NO.	ASSOCIATED PROCESS	REV LTR	REVISION DESCRIPTION	DATE	TDA	SYSCOM
<p>THIS UNIT LOAD IS AUTHORIZED AND RELEASED FOR SHIPPING, HANDLING, STORAGE AND TRANSFER-AT-SEA. IT MAY ALSO BE USED FOR DOMESTIC SHIPMENT IN COMPLIANCE WITH DOT REGULATION.</p> <p><i>M.S. Gray</i> NWHL 1/25/74 SIGNATURE TECHNICAL DIRECTING ACTIVITY (TDA) DATE</p> <p><i>J.E. Kelly</i> 1/31/74 SIGNATURE (AIR) SYSCOM, BY DIRECTION DATE</p>			<p>THIS DOCUMENT IS NOT CONTROLLED. ITS CURRENTNESS IS ASSURED THROUGH RESPONSIBILITY TO ASSURE THE VALIDITY OF THIS DOCUMENT.</p> <p>FEB 1983</p> <p>ORIGINATOR <i>Charles Mc Bride</i> 1/25/74 SIGNATURE</p> <p>NAVAL WEAPONS HANDLING LABORATORY U.S.N.A.D. EARLE, NEW JERSEY</p>			
			PAGE 1 OF 3			

UNITIZING PROCEDURE

- (a) POSITION BOTTOM CONTAINERS SIDE BY SIDE WITH FORE AND AFT ENDS IN OPPOSITE DIRECTION.
- (b) STACK ONE TOP CONTAINER WITH FORE AND AFT END IN OPPOSITE DIRECTION OF THE BOTTOM CONTAINER.

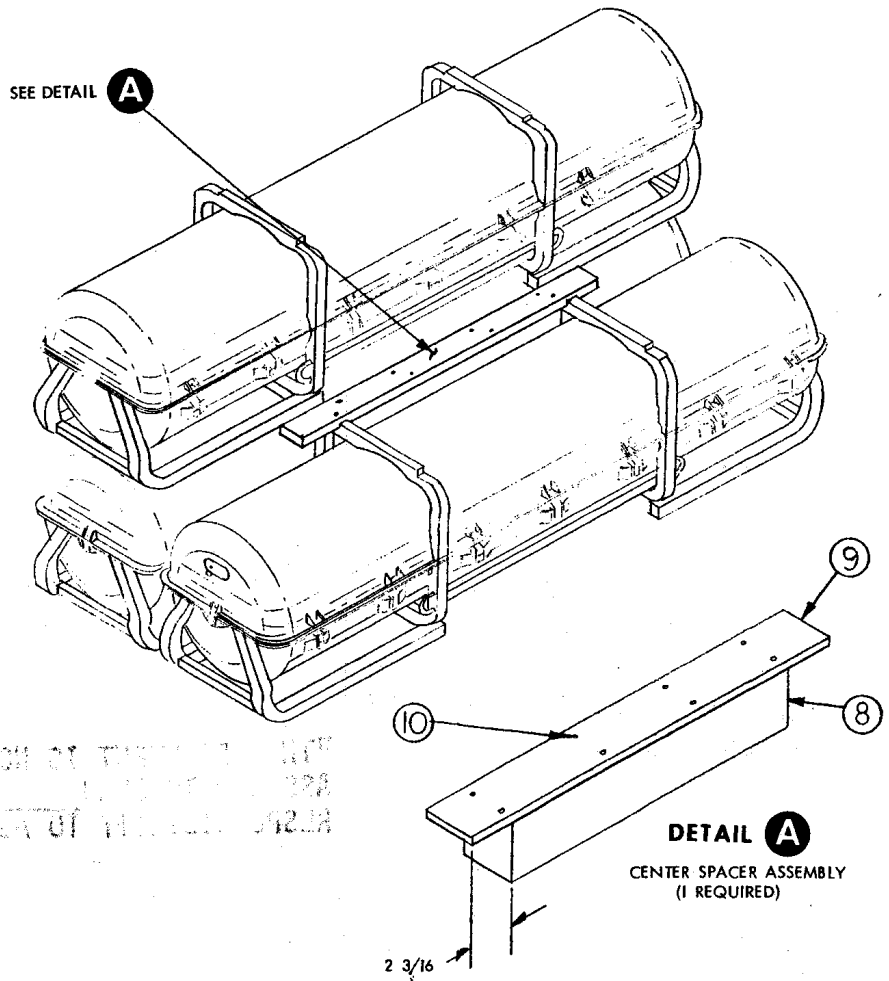
NOTE

ALL STACKING BANDS
MUST BE IN ALIGNMENT.

- (c) INSERT CENTER SPACER ASSEMBLY, ITEMS 8 AND 9, BETWEEN CONTAINERS ON BOTTOM ROW, AS SHOWN IN DETAIL A.
- (d) POSITION THE FOURTH CONTAINER ON TOP ROW CONTINUING TO ALTERNATE FORE AND AFT END.
- (e) POSITION STRAPPING, ITEM 1, UNDER BODY OF BOTTOM TWO CONTAINERS AND OVER SKIDS OF TOP TWO CONTAINERS, TENSION AND DOUBLE NOTCH SEAL, ITEM 3.
- (f) PARTIALLY ASSEMBLE RESTRAINER, ITEMS 5, 6 AND 7, AS SHOWN IN RESTRAINER ASSEMBLY DETAIL. INSERT RESTRAINER SPACERS THROUGH FORK LIFT POCKETS IN TOP TWO CONTAINERS. SEE DETAIL B.
- (g) POSITION STRAPPING, ITEM 2, AROUND FIRST RESTRAINER, ITEM 5, BETWEEN LAYERS OF CONTAINERS AND UNDER AND OVER SECOND RESTRAINER. NAIL SECOND RESTRAINER IN PLACE, TENSION STRAPPING AND DOUBLE NOTCH SEAL, ITEM 4, AS SHOWN IN SECTION C-C.

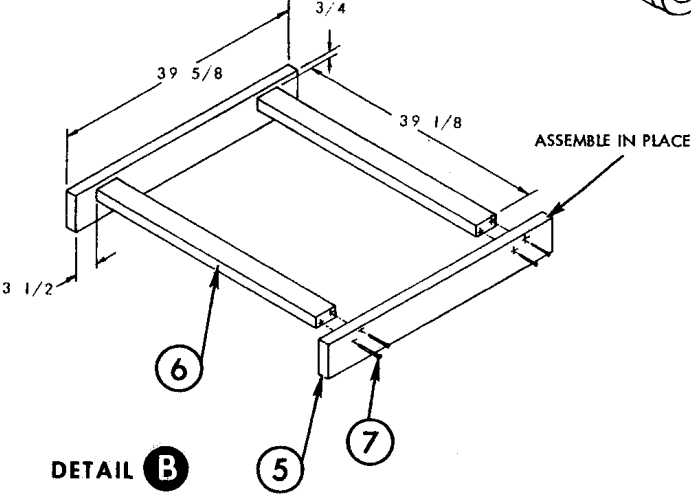
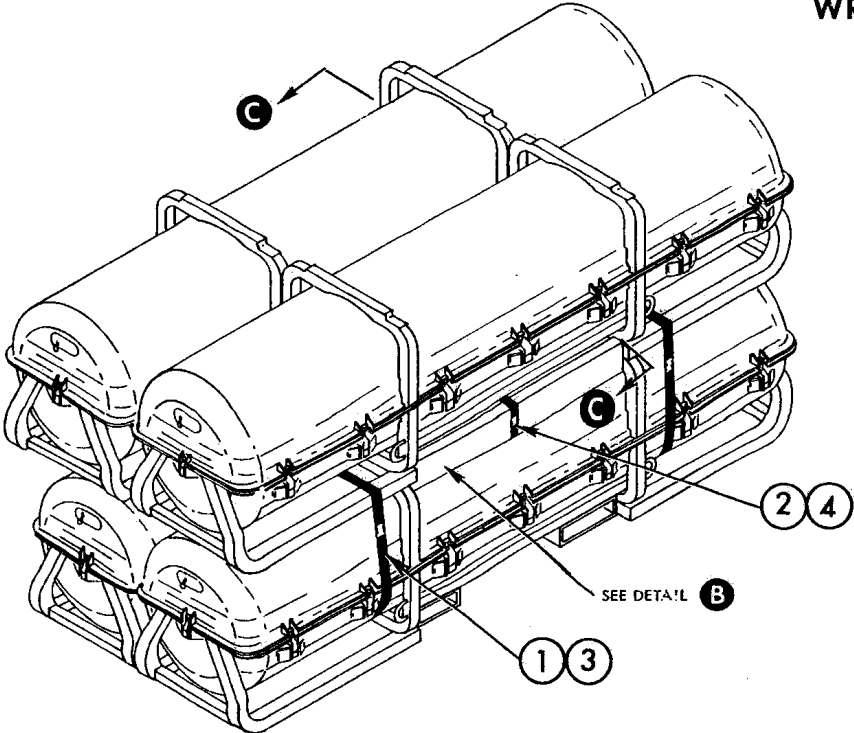
MARKING:

IN ADDITION TO ANY SPECIAL MARKING REQUIRED BY CONTRACT OR ORDER, UNIT LOAD SHALL BE MARKED IN ACCORDANCE WITH MIL-STD-129.

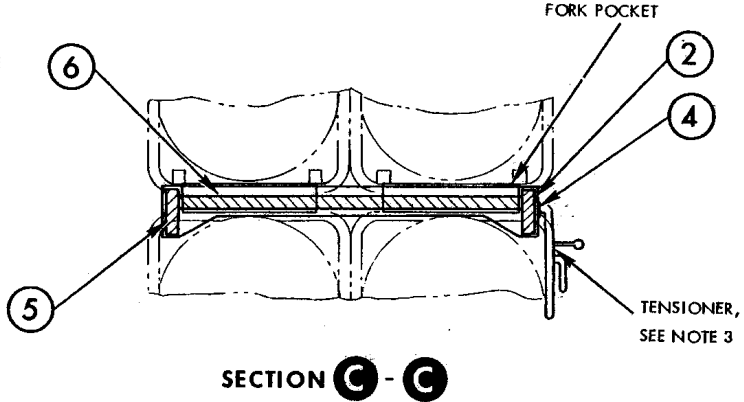


DEUNITIZING PROCEDURE

- (a) CUT AND REMOVE STRAPPING.
- (b) REMOVE RESTRAINER.
- (c) REMOVE CONTAINERS AND CENTER SPACER.



DETAIL B
 RESTRAINER ASSEMBLY
 (1 REQUIRED)



SECTION C - C

- NOTES 1. .031 COLD ROLLED, HEAT TREATED, MAY BE SUBSTITUTED.
 2. DO NOT USE TYPE I STRAPPING WITH POWER TOOLS.
 3. TOOLS AND SEALS REQUIRED TO APPLY STRAPPING, ITEM 2.
 TENSIONER: (PUSH TYPE) ACME MODEL 810, SIGNODE MODEL PH2, OR EQUIVALENT.
 SEALS: (PUSH TYPE) ACME NO. 632 PB, 1 25/32 LONG X 3/4
 SIGNODE NO. 34 HOC 2 1/4 LONG X 3/4, OR EQUIVALENT.

8	10	NAIL, STANDARD BOX	STEEL	FF-N-105 TY II, ST 4	8d
1	9	CENTER SPACER CLEAT	WOOD DRESSED	MM-L-751	1 X 4 X 44
1	8	CENTER SPACER	WOOD DRESSED	MM-L-751	4 X 4 X 39 5/8
1	7	NAIL, STANDARD BOX	STEEL	FF-N-105, TY II, ST 4	12d
2	6	RESTRAINER SPACER	WOOD DRESSED	MM-L-751	2 X 4 X 39 1/8
2	5	RESTRAINER	WOOD DRESSED	MM-L-751	2 X 6 X 39 5/8
1	4	SEAL, SEE NOTE 3	STEEL COATED	QQ-5-781, TY D, ST III, CL H, FIN B	3/4
2	3	SEAL	STEEL COATED	QQ-5-781, TY D, CL H, FIN B	1 1/4
1	2	STRAPPING, SEE NOTES 1 & 3	STEEL COATED HEAVY DUTY	QQ-5-781, TY I OR IV, FIN B	3/4 X .035 X 9 FT 6
2	1	STRAPPING, SEE NOTES 1 & 2	STEEL COATED HEAVY DUTY	QQ-5-781, TY I OR IV, FIN B	1 1/4 X .035 X 13 FT
REQ.	ITEM	DESCRIPTION	MAT'L	MAT'L SPEC.	DIMENSIONS

LIST OF MATERIALS