

# UNIT LOAD FOR UNDERWAY REPLENISHMENT BOMB, MK 84 SERIES, BLU-117 SERIES, AND BDU-56 SERIES IN UNIT LOAD ADAPTER, MK 79 MOD 0 AND MOD 1

## UNIT LOAD DATA (USING MK 79 MOD 0 PALLET)

NUMBER OF BOMBS PER UNIT LOAD.....	2
GROSS WEIGHT OF ONE BOMB (APPROX.).....	1,920 LBS
WEIGHT OF ADAPTER WITH SADDLES.....	259 LBS
WEIGHT OF ADAPTER WITHOUT SADDLES.....	248 LBS
WEIGHT OF STEEL STRAPPING (APPROX.).....	12 LBS
GROSS WEIGHT OF UNIT LOAD (TP).....	4,111 LBS $\Delta$
GROSS WEIGHT OF UNIT LOAD (NTP).....	4,100 LBS $\Delta$
CUBE.....	53.6 CU-FT
CUBE.....	53.6 CU-FT

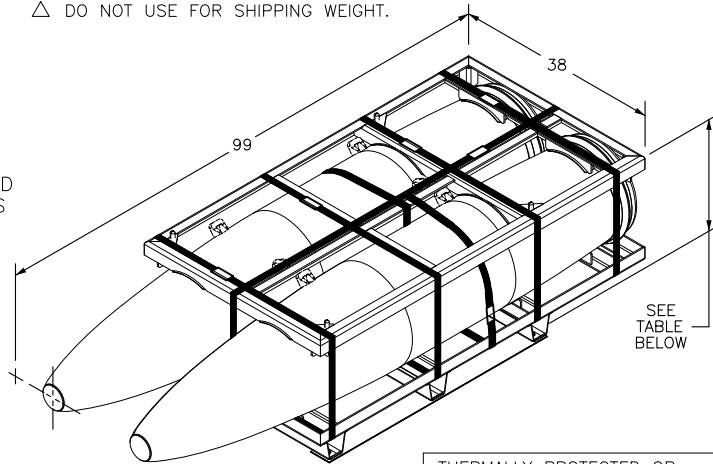
$\Delta$  DO NOT USE FOR SHIPPING WEIGHT.

## UNIT LOAD DATA (USING MK 79 MOD 1 PALLET)

NUMBER OF BOMBS PER UNIT LOAD.....	2
GROSS WEIGHT OF ONE BOMB (APPROX.).....	1,920 LBS
WEIGHT OF ADAPTER.....	300 LBS
WEIGHT OF STEEL STRAPPING (APPROX.).....	12 LBS
GROSS WEIGHT OF UNIT LOAD (TP).....	4,152 LBS $\Delta$
GROSS WEIGHT OF UNIT LOAD (NTP).....	4,141 LBS $\Delta$
CUBE.....	53.6 CU-FT

**WARNING**

DO NOT MIX THERMALLY PROTECTED (TP), THERMAL PROTECTION REMOVED (TPR), AND NON-THERMALLY PROTECTED (NTP) BOMBS ON THE SAME PALLET.



	OVERALL HEIGHT	STACKING HEIGHT
THERMALLY PROTECTED OR THERMAL PROTECTION REMOVED	25	23-3/4
NON-THERMALLY PROTECTED	24-3/4	23-1/2

**NOTES:**

- UNLESS OTHERWISE SPECIFIED, DIMENSIONS ARE IN INCHES
- SEE SW020-AC-SAF-010 FOR THE FOLLOWING INFORMATION:  
(A) CROSS REFERENCE TO ASSOCIATED TRUCK LOADING, CONTAINER LOADING, AND CAR LOADING MILITARY STANDARDS.  
(B) HAZARD CLASSIFICATION.
- FOR UNIT LOAD QUALIFICATION WITH OR WITHOUT MECHANICAL SADDLES, SEE PHST TEST REPORTS 93042 & 93068.
- FOR UNIT LOAD QUALIFICATION WITH WELDED SADDLES, SEE PHST INFORMAL TEST REPORT 05093.
- DO NOT STACK MORE THAN 6 UNIT LOADS HIGH IN STORAGE.

F	SEE NSWC IHEDTD DET PICATINNY ECP I17021	7/27/2017	S/JB	S/RS										
E	SEE NSWC IHD DET EARLE ECP I07052	11/19/2007	S/CSC	S/RS										
D	SEE NSWC IHD DET EARLE ECP I06044	3/28/2007	S/CHAPIN	S/R SMITH										
C	SEE NSWC IHD DET EARLE ECP I05066	8/31/2005	S/JM	S/AVS										
B	SEE NSWC IHD DET EARLE ECP I04058	6/23/2004	S/JM	S/AVS										
A	SEE NSWC IHD DET EARLE ECP I03021	4/30/2003	S/AVS	S/KZ										
-	ORIGINAL ISSUE, SUPERSEDES MIL-STD-1323-127A & MIL-STD-1323-253A	7/12/1999	S/AVS	S/KZ	F	F	E	E	F	F	F	F	E	
					1	2	3	4	5	6	7	8	9	
REV.	REVISION DESCRIPTION	DATE	TDA	SYSCOM	REVISION STATUS OF SHEETS									

TECH DATA MANAGEMENT SUPERVISOR	EP S/AVS	1999-07-12
SYSTEMS ENG. SUPERVISOR	S/GB	1999-07-12
S/ R. SMITH      2004-09-30		
NAVSEASYSKOM ( BY DIRECTION )		

**DISTRIBUTION STATEMENT A**  
APPROVED FOR PUBLIC RELEASE: DISTRIBUTION IS UNLIMITED

REQUIREMENTS FOR CONSTRUCTION OF THIS UNIT LOAD SHALL CONSIST OF THIS DOCUMENT & THE LATEST ISSUE OF MIL-STD-1323 (NAVY)

THIS LOAD IS AUTHORIZED & RELEASED FOR DEPOT HANDLING & STORAGE & FOR SHIPMENT BY COMMON CARRIER

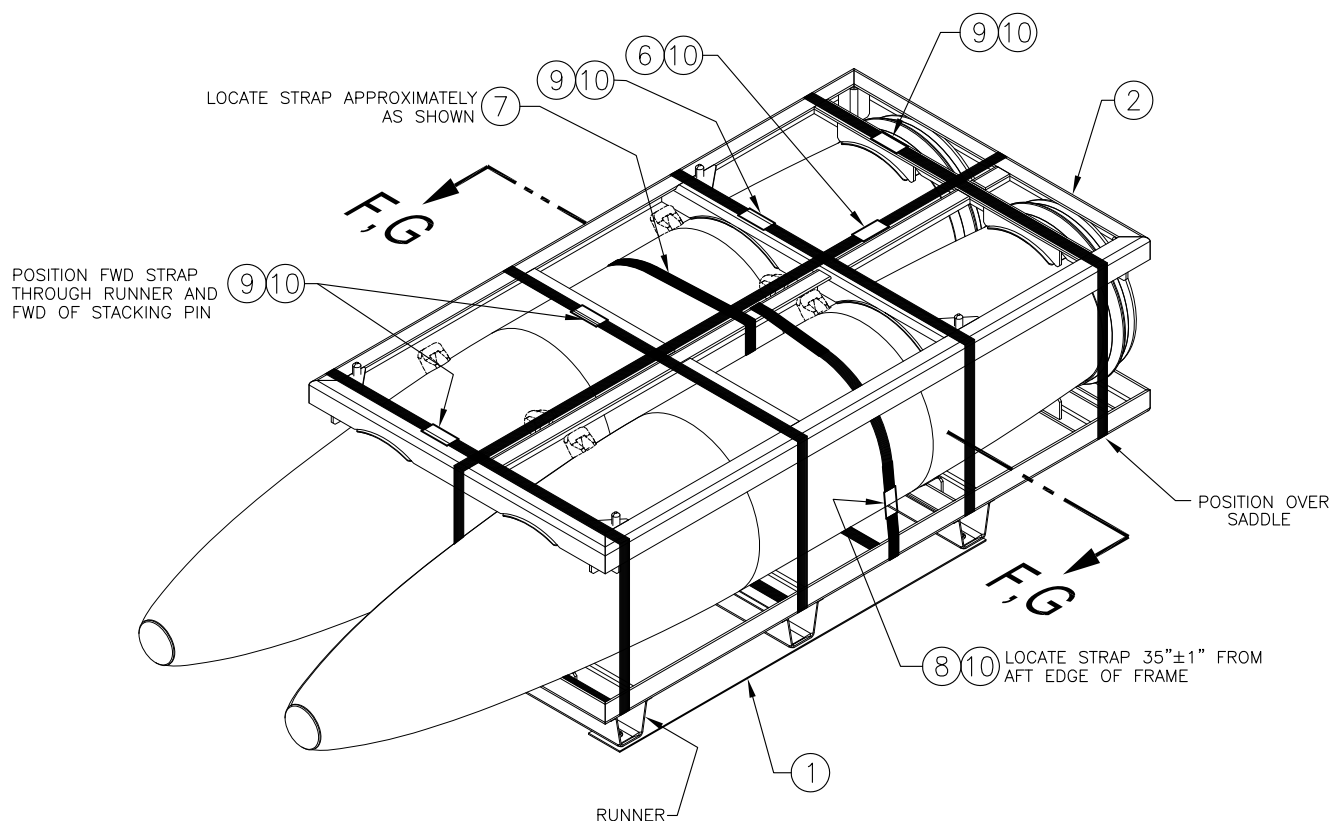
DEPARTMENT OF THE NAVY NAVAL SEA SYSTEMS COMMAND ARLINGTON, VA 22242-5160	CAGE CODE 53711	DWG NO. 6214081	REV. F
	SIZE A		

# PALLETIZING PROCEDURE

NOTES: (FOR PARTS LIST SEE PAGE 4)

1. LOOK AT THE ILLUSTRATIONS IN DETAILS A, B, AND C, AND DETERMINE WHICH MK 79 PALLET FRAME IS BEING USED (I.E., THE MOD 0 OR THE MOD 1). IF LOADING THERMALLY PROTECTED BOMBS ONTO MOD 0 PALLET FRAMES, BOTH UPPER AND LOWER FRAMES MUST BE FITTED WITH SADDLES, ITEMS 3, 4, AND 5. WHEN USING THE SADDLES, ENSURE THAT THEY ARE CENTERED AND FULLY HAMMERED IN PLACE BEFORE LOADING THE BOMBS.
2. THREAD LONGITUDINAL STRAP, ITEM 6, THROUGH SLOTS IN BOTTOM FRAME, ITEM 1, AS SHOWN IN DETAIL E.
3. PLACE BOMBS ONTO BOTTOM FRAME WITH THE AFT ENDS OF THE BOMBS SNUG AGAINST THE INSIDE EDGE OF THE FRAME'S AFT MEMBER (SEE DETAIL E).
4. MAKE SURE THE BOMB SUSPENSION LUGS ARE SCREWED ALL THE WAY IN, AND THEN TURN THEM SO THEY ARE ORIENTED AS SHOWN IN DETAIL D.
5. ROTATE THE BOMB BODIES SUCH THAT THE LUGS POINT IN THE DIRECTIONS SHOWN IN SECTIONS F-F AND G-G. THE LUGS CAN BE ROTATED SO THAT THEY ARE INWARD OR OUTWARD ON THE PALLET (10 O'CLOCK OR 2 O'CLOCK POSITIONS). LUGS ARE REPRESENTED BY DOTTED LINES TO SHOW THE TWO DIFFERENT CONFIGURATIONS. PRODUCTION FACILITIES PALLETIZING BOMBS HAVING JUST BEEN FILLED WITH TRITONAL, H-6, OR AFX-795, HOWEVER, SHALL PALLETIZE THE BOMBS WITH THE LUGS ORIENTED AS SHOWN IN DETAIL L ON PAGE 8.
6. POSITION REMAINING STRAPS, ITEMS 7, 8, AND 9 (QTY 4), AS SHOWN BELOW. IT IS SUGGESTED THAT THE BOMB STRAPS, ITEMS 7 & 8, BE PREPOSITIONED BEFORE PLACING THE SECOND BOMB ONTO THE PALLET. PLACE TOP FRAME, ITEM 2, OVER BOMBS WITH THE INSIDE EDGE OF ITS AFT MEMBER SNUG AGAINST THE AFT ENDS OF THE BOMBS.
7. TENSION AND SECURE ALL STRAPS IN THE FOLLOWING ORDER, USING ONE DOUBLE NOTCHED SEAL, ITEM 10, PER STRAP.
  - INNER LATERAL STRAPS, ITEMS 9
  - OUTER LATERAL STRAPS, ITEMS 9
  - BOMB STRAPS, ITEMS 7 & 8
  - LONGITUDINAL STRAP, ITEM 6

MARKING: IN ADDITION TO ANY SPECIAL MARKING REQUIRED BY CONTRACT OR ORDER, THE UNIT LOAD SHALL BE MARKED IN ACCORDANCE WITH THE INSTRUCTIONS ON PAGE 9.

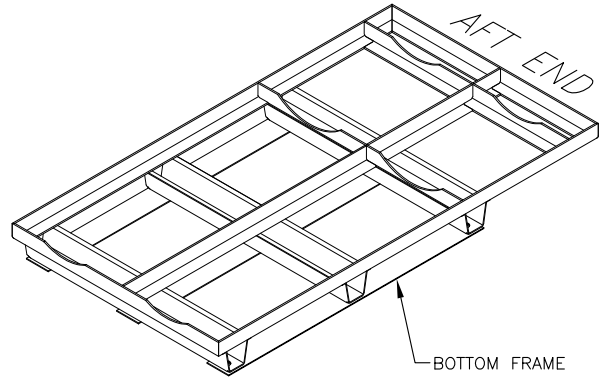
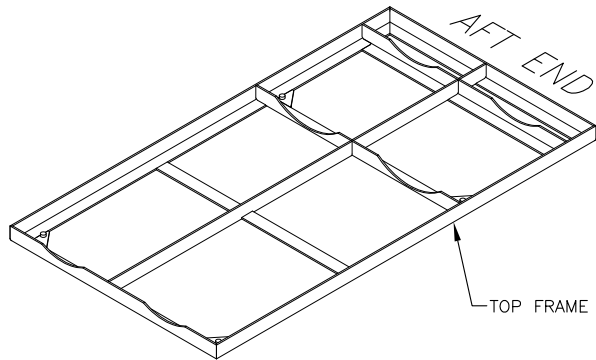


## DEPALLETIZING PROCEDURE:

1. CUT & REMOVE ALL STRAPPING.
2. REMOVE TOP FRAME.
3. REMOVE BOMBS.
4. POSITION TOP FRAME ON BOTTOM FRAME.
5. IF MOD 0 PALLET, REMOVE SADDLES AND SECURELY FASTEN TO FRAME.
6. STACK LIKE PALLET ASSEMBLIES AND SECURE TOGETHER FOR STORAGE/STOWAGE.

### WARNING

WEAR LEATHER GLOVES AND EYE PROTECTION (WITH SIDE SHIELDS) OR GOGGLES TO PREVENT INJURY WHEN PERFORMING STRAPPING OPERATIONS. RAPIDLY UNCOILING STRAPPING MAY CAUSE INJURY. DIRECT STRAPPING AWAY FROM PERSONNEL WHEN CUTTING STRAPPING UNDER TENSION.

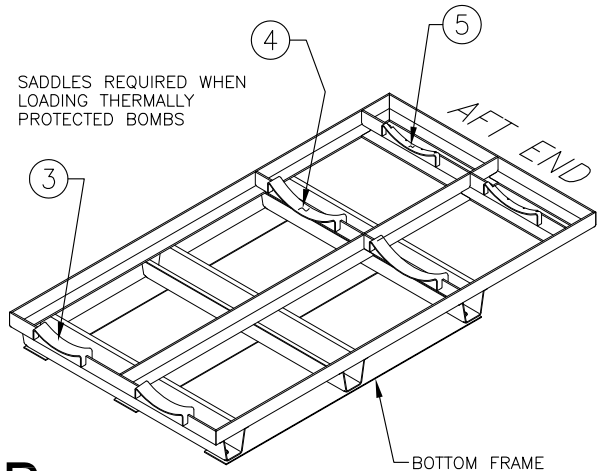
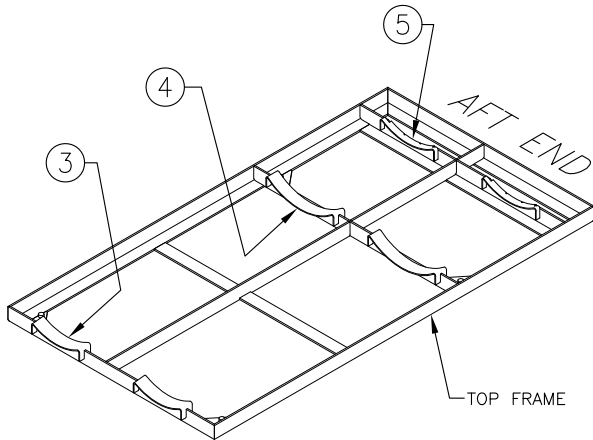


**NOTE**

ONLY NON-THERMALLY PROTECTED BOMBS SHALL BE LOADED ONTO MOD 0 PALLETS WITHOUT SADDLES.

## DETAIL A

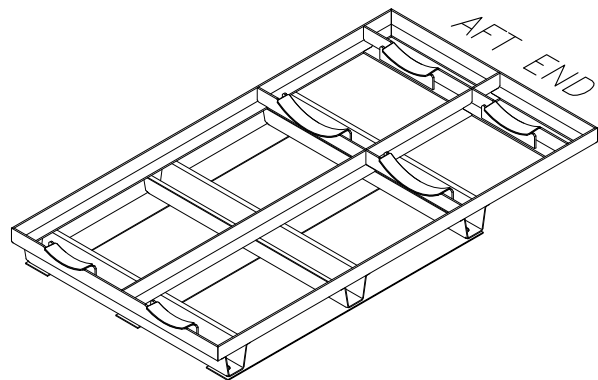
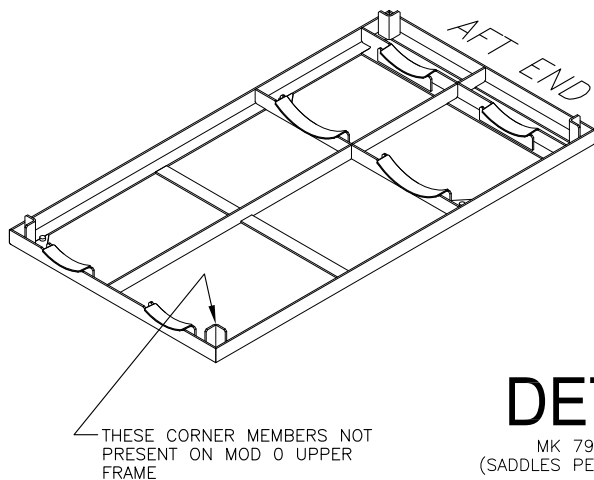
MK 79 MOD 0 PALLET  
(WITHOUT REMOVABLE SADDLES)



SADDLES REQUIRED WHEN LOADING THERMALLY PROTECTED BOMBS

## DETAIL B

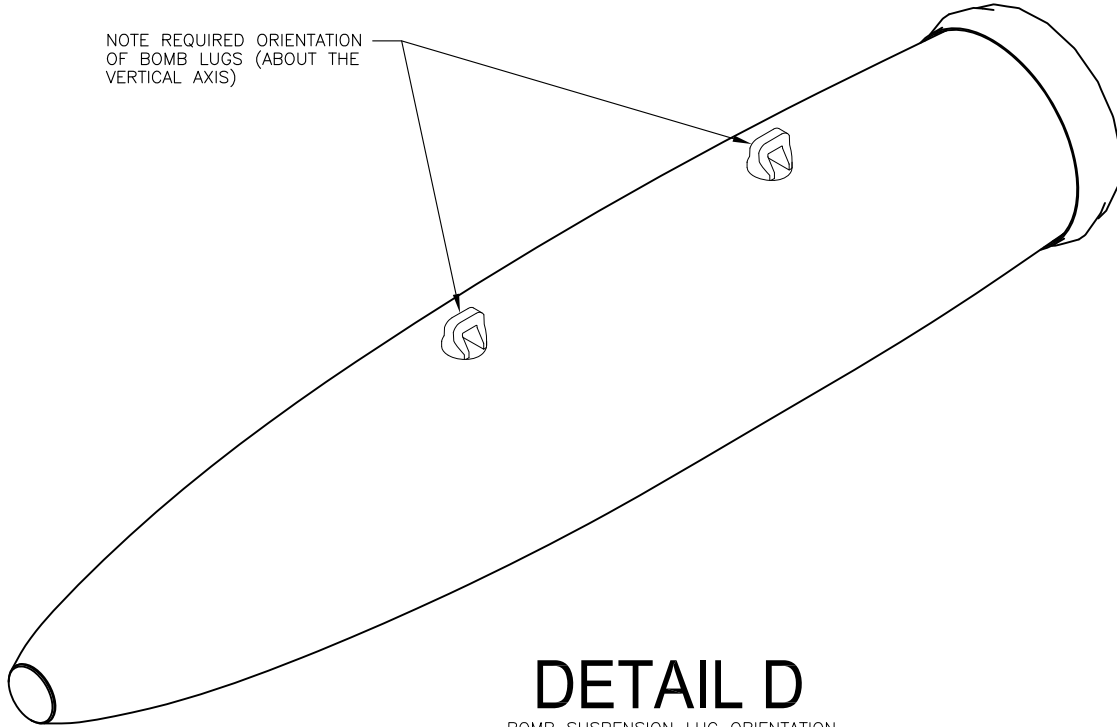
MK 79 MOD 0 PALLET  
(WITH REMOVABLE SADDLES)



## DETAIL C

MK 79 MOD 1 PALLET  
(SADDLES PERMANENTLY ATTACHED)

NOTE REQUIRED ORIENTATION  
OF BOMB LUGS (ABOUT THE  
VERTICAL AXIS)



## DETAIL D

BOMB SUSPENSION LUG ORIENTATION

### MATERIAL NOTES:

1. STRAPPING SHALL CONFORM TO ASTM D3953, FLAT, TYPE 1, HEAVY DUTY, FINISH B, GRADE 2.
2. SEALS SHALL CONFORM TO ASTM D3953, CLASS H, FINISH B, GRADE 2, STYLE I, II OR IV.
3. WOOD SHALL CONFORM TO VOLUNTARY PRODUCTS STANDARD PS-20-05.
4. WOOD PACKAGING MATERIALS: ALL NON-MANUFACTURED WOOD (INCLUDING HARD WOOD) USED IN PACKAGING OR UNITIZATION SHALL BE HEAT TREATED TO A CORE TEMPERATURE OF 56 DEGREESCELSIUS (133° F) FOR A MINIMUM OF 30 MINUTES. THE BOX, WOOD PACKAGING, AND PALLET MANUFACTURERS SHALL BE AFFILIATED WITH AN INSPECTION AGENCY ACCREDITED BY THE BOARD OF REVIEW OF THE AMERICAN LUMBER STANDARD COMMITTEE. AN INTERNATIONAL CERTIFICATION AUTHORITY RECOGNIZED BY THE U. S. DEPARTMENT OF AGRICULTURE MUST ACCREDIT AN INTERNATIONAL SOURCE OF WOOD. EACH BOX SHALL BE MARKED TO SHOW THE CONFORMANCE TO THE INTERNATIONAL PLANT PROTECTION CONVENTION STANDARD. BOXES AND ANY WOOD USED AS INNER PACKAGING MADE OF NON-MANUFACTURED WOOD SHALL BE HEAT-TREATED. THE QUALITY MARK SHALL BE PLACED ON BOTH ENDS OF THE OUTER PACKAGING (BETWEEN THE ENCLOSURE CLEATS OR BATTENS IF APPLICABLE). QUALITY MARKS FOR PALLETS SHALL BE PLACED ON TWO OPPOSITE END POSTS. QUALITY MARK FOR WOOD UNITIZATION COMPONENTS SHALL BE PLACED ON TWO OPPOSITE SIDES. FOREIGN MANUFACTURERS SHALL HAVE THE HEAT TREATMENT OF NON-MANUFACTURED WOOD PRODUCTS VERIFIED IN ACCORDANCE WITH THEIR NATIONAL PLANT PROTECTION ORGANIZATION'S COMPLIANCE PROGRAM.
5. NAILS SHALL CONFORM TO ASTM F1667 DESIGNATION F1667 NL CM S-XX B, WHERE "XX" DESIGNATES THE SIZE (I.E., 8d, 10d, ETC.).

NOTE: QUANTITIES SHOWN FOR ITEMS 1-10 ARE FOR A FULL PALLET LOAD (2 BOMBS)

7	10	STRAP SEAL	SEE MATERIAL NOTE 2	1-1/4" SIZE
4	9	LATERAL STRAPPING	SEE MATERIAL NOTE 1	1-1/4 X .031 (OR .035) X 11 FT
1	8	RIGHT BOMB STRAPPING	SEE MATERIAL NOTE 1	1-1/4 X .031 (OR .035) X 8 FT
1	7	LEFT BOMB STRAPPING	SEE MATERIAL NOTE 1	1-1/4 X .031 (OR .035) X 7 FT
1	6	LONGITUDINAL STRAPPING	SEE MATERIAL NOTE 1	1-1/4 X .031 (OR .035) X 16 FT
4	5	SADDLE, REMOVABLE, AFT	30003 805AS100-3	
4	4	SADDLE, REMOVABLE, CENTER	30003 805AS100-2	
4	3	SADDLE, REMOVABLE, FORWARD	30003 805AS100-1	
1	2	TOP FRAME (MK 79)	10001-2642648 (MOD 0)	30003-A511AS202 (MOD 1)
1	1	BOTTOM FRAME (MK 79)	10001-2642647 (MOD 0)	30003-A511AS201 (MOD 1)
REQ	ITEM	DESCRIPTION	MAT'L/DWG	DIMENSIONS
LIST OF MATERIALS				

NAVSEA  
DWG NO.

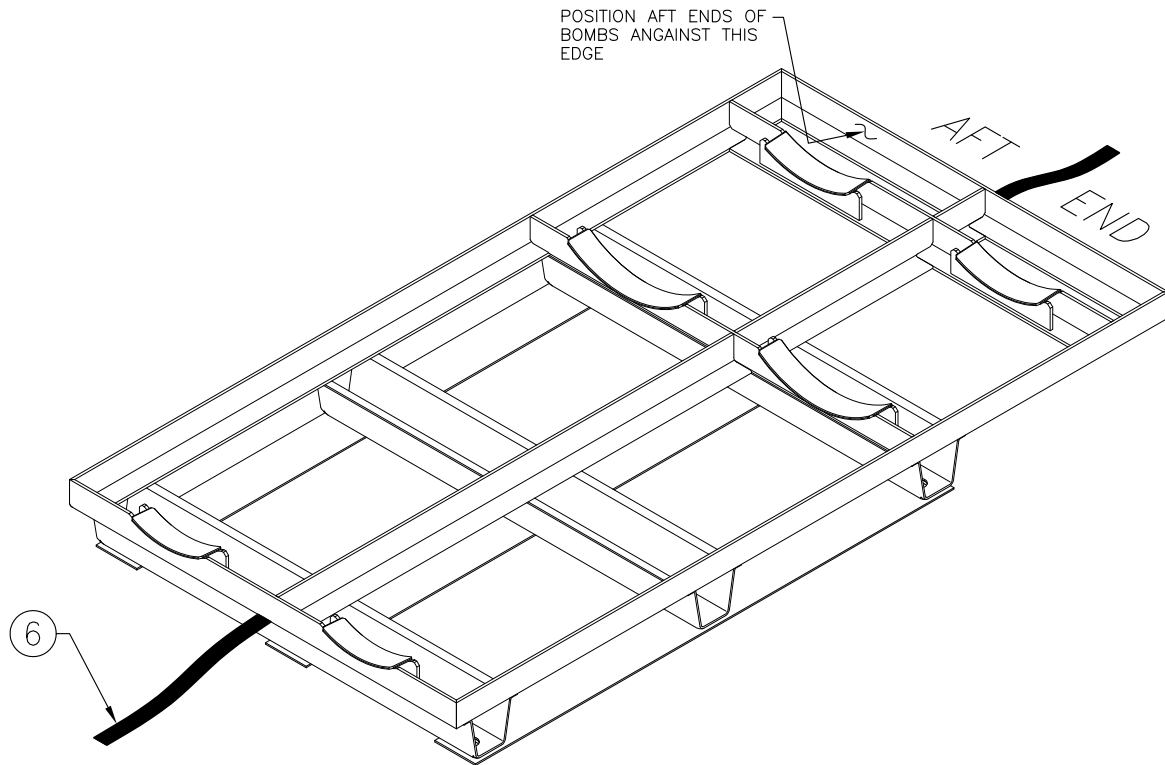
6214081

REV. E

SIZE A

CAGE CODE  
53711

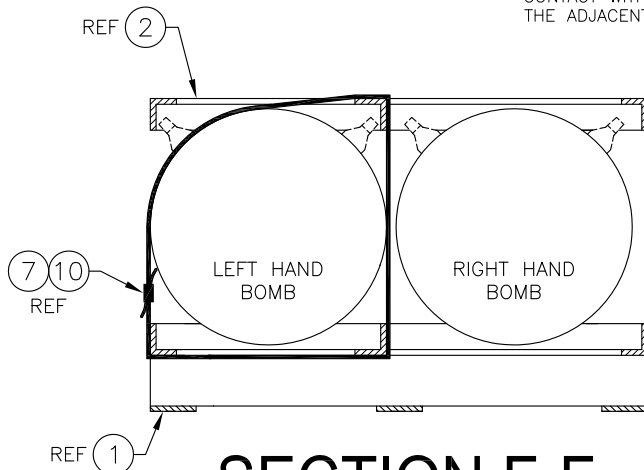
PAGE 4 OF 9



## DETAIL E

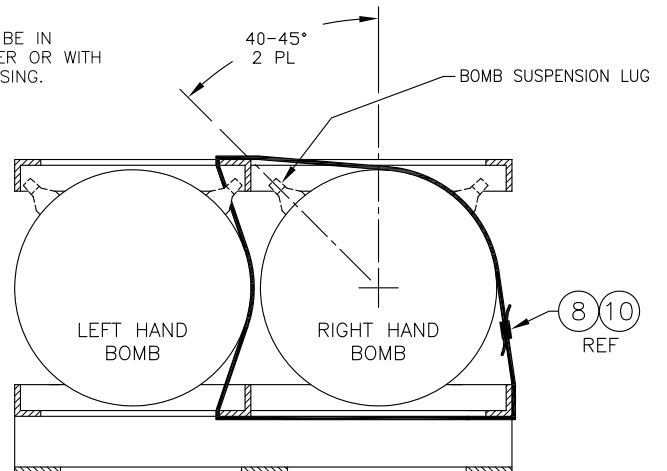
### CAUTION

BOMB LUGS SHALL NOT BE IN CONTACT WITH ONE OTHER OR WITH THE ADJACENT BOMB CASING.



## SECTION F-F

LEFT BOMB STRAPPING  
(RIGHT BOMB STRAPPING, ITEM 8,  
NOT SHOWN FOR CLARITY)



## SECTION G-G

RIGHT BOMB STRAPPING  
(LEFT BOMB STRAPPING, ITEM 7,  
NOT SHOWN FOR CLARITY)

NOTE: NEW PRODUCTION BOMBS FILLED WITH TRITONAL, H-6, OR AFX-795 SHALL BE ORIENTED ON THE PALLET WITH THE LUGS IN THE 5 O'CLOCK AND 7 O'CLOCK POSITIONS AS SHOWN IN DETAIL L ON PAGE 8. OTHERWISE, LUGS SHOULD BE ORIENTED IN THE INWARD OR OUTWARD (10 O'CLOCK OR 2 O'CLOCK) POSITIONS AS SHOWN IN SECTIONS F-F AND G-G.

# PALLETIZING PROCEDURE FOR PARTIAL UNIT LOAD (ONE BOMB ONLY)

NOTES: (FOR PARTS LIST SEE PAGE 4 AND BELOW)

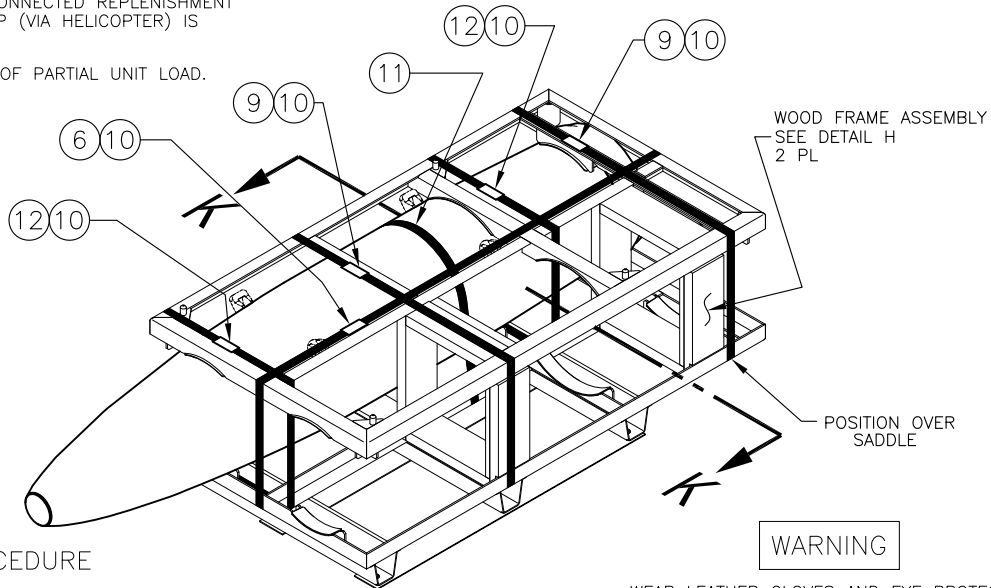
1. LOOK AT THE ILLUSTRATIONS IN DETAILS A, B, AND C, AND DETERMINE WHICH MK 79 PALLET FRAME IS BEING USED (I.E., THE MOD 0 OR THE MOD 1). IF LOADING A THERMALLY PROTECTED BOMB ONTO MOD 0 PALLET FRAMES, BOTH UPPER AND LOWER FRAMES MUST BE FITTED WITH SADDLES, ITEMS 3, 4, AND 5. WHEN USING THE SADDLES, ENSURE THAT THEY ARE CENTERED AND FULLY HAMMERED IN PLACE BEFORE LOADING THE BOMB.
2. THREAD LONGITUDINAL STRAP, ITEM 6, THROUGH SLOTS IN BOTTOM FRAME, ITEM 1, AS SHOWN IN DETAIL E.
3. PLACE BOMB ONTO STARBOARD SIDE OF BOTTOM FRAME WITH THE AFT END OF THE BOMB SNUG AGAINST THE INSIDE EDGE OF THE FRAME'S AFT MEMBER (SEE DETAIL J).
4. MAKE SURE THE BOMB SUSPENSION LUGS ARE SCREWED ALL THE WAY IN, AND THEN TURN THEM SO THEY ARE ORIENTED AS SHOWN IN DETAIL D.
5. ROTATE THE BOMB BODY SUCH THAT THE LUGS POINT IN THE DIRECTIONS SHOWN IN SECTION K-K ON PAGE 8. PRODUCTION FACILITIES PALLETIZING A BOMB HAVING JUST BEEN FILLED WITH TRITONAL, H-6, OR AFX-795, HOWEVER, SHALL PALLETIZE THE BOMB WITH THE LUGS ORIENTED AS SHOWN IN DETAIL L ON PAGE 8.
6. APPLY BOMB STRAP, ITEM 11, AS SHOWN IN SECTION K-K. LOCATE AS SHOWN IN DETAIL J. TENSION AND SECURE STRAP WITH ONE DOUBLE NOTCHED SEAL, ITEM 10.
7. FABRICATE TWO WOOD FRAME ASSEMBLIES AS SHOWN IN DETAIL H. NOTE THAT THE LENGTHS OF THE VERTICAL PIECES (ITEMS 13, 14, & 15) ARE SLIGHTLY DIFFERENT DEPENDING ON WHETHER A MK 79 MOD 0 OR MOD 1 PALLET IS BEING USED.
8. PLACE WOOD FRAME ASSEMBLIES INTO BOTTOM FRAME, POSITIONED AS SHOWN IN DETAIL J.
9. PLACE TOP FRAME, ITEM 2, OVER BOMB AND WOOD FRAME ASSEMBLIES WITH THE INSIDE EDGE OF ITS AFT MEMBER SNUG AGAINST THE AFT END OF THE BOMB.
10. POSITION REMAINING STRAPS, ITEMS 6, 9 (QTY 2), AND 12 (QTY 2), AS SHOWN BELOW.
11. TENSION AND SECURE ALL STRAPS IN THE FOLLOWING ORDER, USING ONE DOUBLE NOTCHED SEAL, ITEM 10, PER STRAP.
  - LATERAL STRAPS, ITEM 12
  - LATERAL STRAPS, ITEM 9
  - LONGITUDINAL STRAP, ITEM 6

MARKING: IN ADDITION TO ANY SPECIAL MARKING REQUIRED BY CONTRACT OR PURCHASE ORDER, THE UNIT LOAD SHALL BE MARKED IN ACCORDANCE WITH THE INSTRUCTIONS ON PAGE 9.

**WARNING**

APPROXIMATE GROSS WEIGHT OF PARTIAL UNIT LOAD . . . 2,243 LBS ■  
 ■ DO NOT USE FOR SHIPPING WEIGHT.

1. PARTIAL UNIT LOADS ARE APPROVED FOR TRANSFER-AT-SEA BY CONNECTED REPLENISHMENT (CONREP) ONLY. VERTREP (VIA HELICOPTER) IS FORBIDDEN.
2. DO NOT STACK ON TOP OF PARTIAL UNIT LOAD.



## DEPALLETIZING PROCEDURE

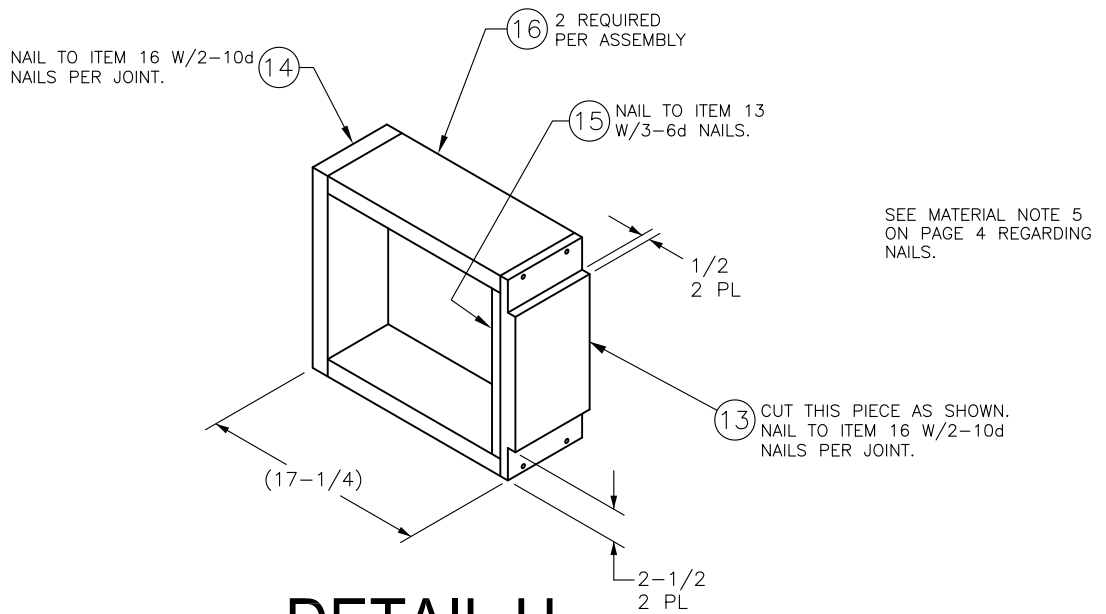
1. CUT & REMOVE ALL STRAPPING.
2. REMOVE TOP FRAME & WOOD FRAME ASSEMBLIES.
3. REMOVE BOMB.
4. POSITION TOP FRAME ON BOTTOM FRAME.
5. IF MOD 0 PALLET, REMOVE SADDLES AND SECURELY FASTEN TO FRAME.
6. STACK LIKE PALLET ASSEMBLIES AND SECURE TOGETHER FOR STORAGE/STOWAGE.

**WARNING**

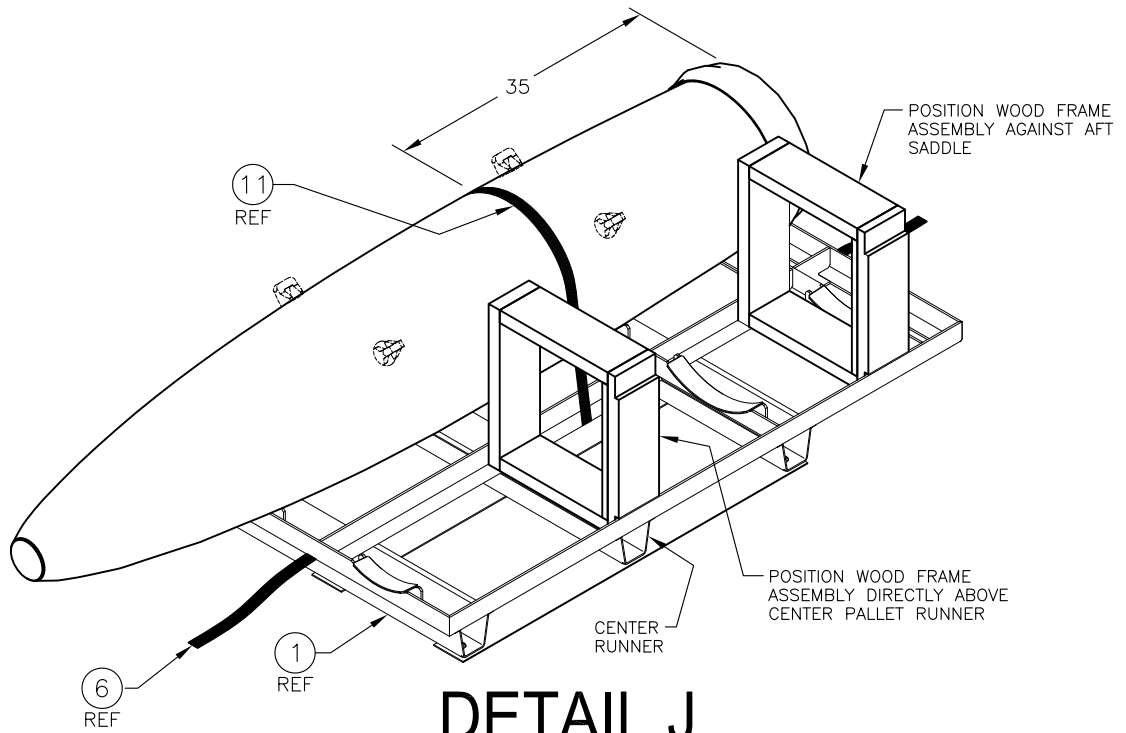
WEAR LEATHER GLOVES AND EYE PROTECTION (WITH SIDE SHIELDS) OR GOGGLES TO PREVENT INJURY WHEN PERFORMING STRAPPING OPERATIONS. RAPIDLY UNCOILING STRAPPING MAY CAUSE INJURY. DIRECT STRAPPING AWAY FROM PERSONNEL WHEN CUTTING STRAPPING UNDER TENSION.

REQ	ITEM	DESCRIPTION	MAT'L/DWG	DIMENSIONS
2	12	LATERAL STRAPPING, SHORT	SEE MATERIAL NOTE 1, PAGE 4	1-1/4 X .031 (OR .035) X 8 FT
1	11	STRAPPING, BOMB	SEE MATERIAL NOTE 1, PAGE 4	1-1/4 X .031 (OR .035) X 8 FT

LIST OF MATERIALS

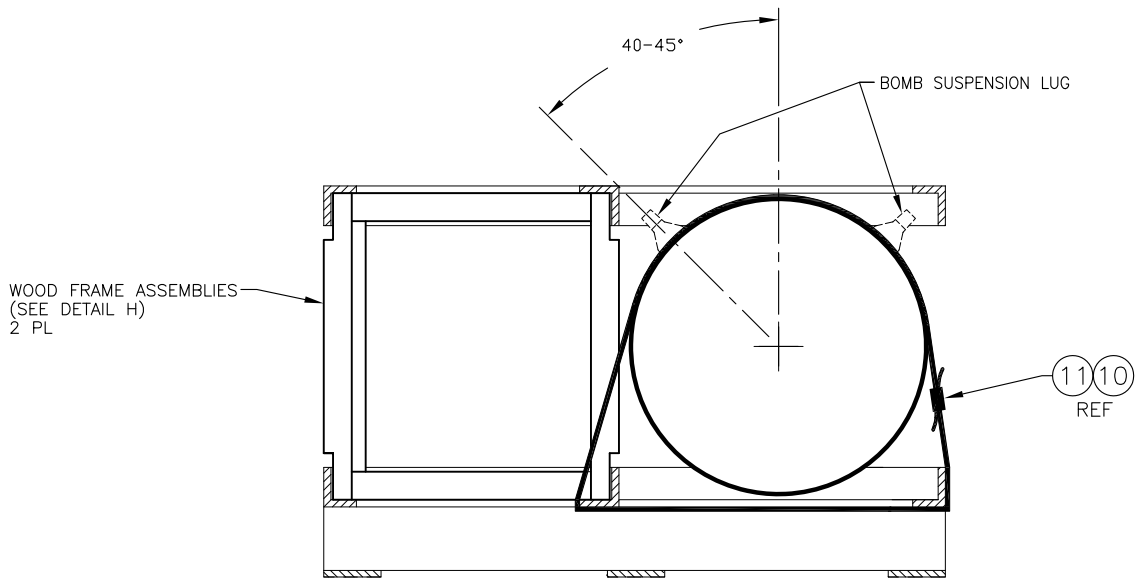


**DETAIL H**  
WOOD FRAME ASSEMBLY  
2 REQUIRED



**DETAIL J**

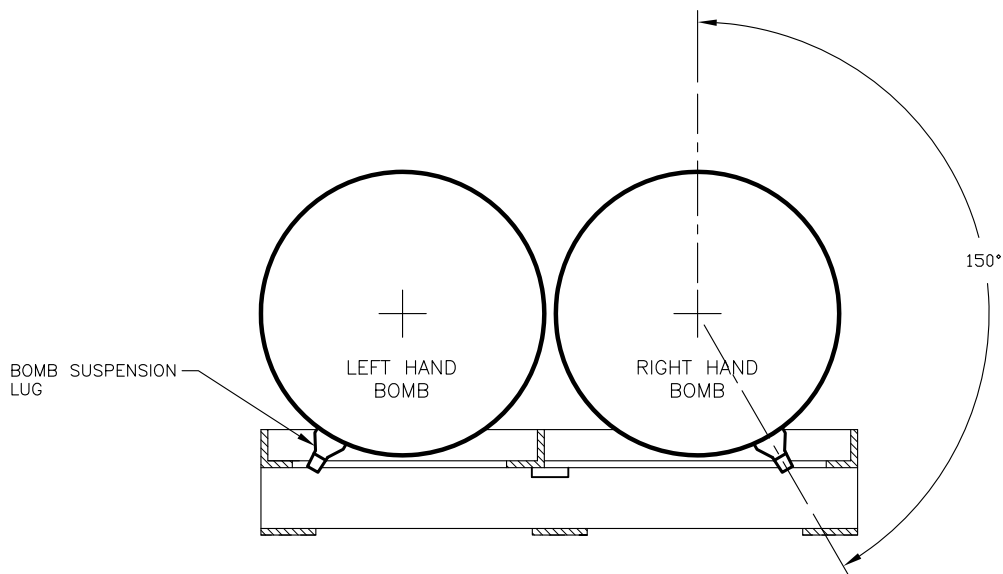
4	16	HORIZONTAL	SEE MATERIAL NOTE 3, PAGE 4	2 X 6 X 14-3/4
2	15	VERTICAL, INBOARD	SEE MATERIAL NOTE 3, PAGE 4	1 X 6 X 16 (ADAPTER WITH SADDLES) 1 X 6 X 15-3/8 (ADAPTER WITHOUT SADDLES)
2	14	VERTICAL, OUTBOARD	SEE MATERIAL NOTE 3, PAGE 4	2 X 6 X 19 (ADAPTER WITH SADDLES) 2 X 6 X 18-3/8 (ADAPTER WITHOUT SADDLES)
2	13	VERTICAL, OUTBOARD	SEE MATERIAL NOTE 3, PAGE 4	2 X 6 X 19 (ADAPTER WITH SADDLES) 2 X 6 X 18-3/8 (ADAPTER WITHOUT SADDLES)
REQ	ITEM	DESCRIPTION	MAT'L/DWG	DIMENSIONS
LIST OF MATERIALS				



# SECTION K-K

(LOOKING FORWARD)

ALL OTHER STRAPS OMITTED FROM VIEW FOR CLARITY



# DETAIL L

THIS DETAIL SHOWS THE REQUIRED SUSPENSION LUG ORIENTATION FOR NEW PRODUCTION BOMBS FILLED WITH H-6, TRITONAL, OR AFX-795. ONCE THESE BOMBS ARE IN THE FIELD, THEY MAY BE RE-PALLETIZED WITH THE LUGS ORIENTED AS SHOWN IN SECTIONS F-F AND G-G ON PAGE 5.



## MARKING INSTRUCTIONS:

1. IN ADDITION TO ANY SPECIAL MARKING REQUIRED BY CONTRACT OR ORDER, THE UNIT LOAD SHALL BE MARKED IN ACCORDANCE WITH 28620-ACV00561 AND THE FOLLOWING NOTES.
2. THE UNIT LOAD MARKING AND UNIT LOAD LINEAR AND 2D BAR CODES SHALL BE APPLIED TO WATERPROOF TAG(S) THAT ARE ATTACHED TO THE UNIT LOAD AT DIAGONALLY OPPOSITE ENDS OF THE UNIT LOAD ON THE TOP FRAME OF THE ADAPTER. THE UNIT LOAD MARKING AND LINEAR BAR CODE LABELS SHALL BE APPLIED TO ONE SIDE OF THE TAG. THE 2D BAR CODE LABEL SHALL BE APPLIED TO THE OPPOSITE SIDE OF THE TAG. WATERPROOF PAPER, METAL, CLOTH OR PLASTIC TAGS SHALL BE USED. THE TAGS SHALL BE ATTACHED BY CORROSION-RESISTANT WIRE OR PLASTIC TIES.
3. LINEAR BAR CODE LABELS:
  - A. IN ADDITION TO 2D BAR CODE LABELS OF ACV00561, APPLY NIIN AND LOT NUMBER LINEAR BAR CODE LABELS AS FOLLOWS:
    - 1) NIIN BAR CODE LABEL: THE NINE-DIGIT NATIONAL ITEM IDENTIFICATION NUMBER (NIIN), OWNERSHIP CODE AND AMMUNITION CONDITION CODE SHALL BE ENCODED AS A SINGLE "MESSAGE". THE NIIN SHALL BE ENCODED WITHOUT THE DASHES. A SPACE (ENCODED) SHALL BE PLACED BETWEEN THE NIIN AND THE OWNERSHIP CODE AND BETWEEN THE OWNERSHIP CODE AND AMMUNITION CONDITION CODE.
      - a) OWNERSHIP CODE: THE OWNERSHIP CODE SHALL BE AS FOLLOWS:
        1. FOR ARMY-OWNED AMMUNITION- "1".
        2. FOR MARINE CORPS-OWNED AMMUNITION- "4".
        3. FOR NAVY OWNED-AMMUNITION- "5".
        4. FOR AIR FORCE-OWNED AMMUNITION- "6".
        5. FOR COAST GUARD-OWNED AMMUNITION- "7".
      - b) AMMUNITION CONDITION CODE: THE AMMUNITION CONDITION CODE (C/C) SHALL BE "A" FOR NEW PRODUCTION ASSETS.
    - 2) LOT/SERIAL NUMBER BAR CODE LABEL: THE LOT NUMBER, SERIAL NUMBER, SHELF-LIFE EXPIRATION DATE AND QUANTITY SHALL BE ENCODED ON THE SAME "MESSAGE". A SLASH (ENCODED) SHALL BE PLACED BETWEEN THE LOT NUMBER AND THE SERIAL NUMBER, WHEN BOTH LOT AND SERIAL NUMBERS ARE ASSIGNED. THE SHELF-LIFE EXPIRATION DATE IS A 4 DIGIT DATA ELEMENT REPRESENTING THE MONTH (01 THROUGH 12) AND LAST TWO DIGITS OF THE YEAR. THE SHELF-LIFE SHALL BE ENCODED BETWEEN THE SERIAL NUMBER AND THE QUANTITY, IF A SHELF-LIFE IS ASSIGNED. A SPACE (ENCODED) SHALL BE PLACED BETWEEN THE SERIAL NUMBER AND THE SHELF-LIFE DATE AND BETWEEN THE SHELF-LIFE DATE AND THE QUANTITY.
  - B. LINEAR BAR CODE REQUIREMENTS:
    - 1) LABELS SHALL MEET THE REQUIREMENTS FOR GRADE A, STYLE 2, COMPOSITION B, LABELS AS SPECIFIED IN MIL-PRF-61002. THE PERFORMANCE REQUIREMENTS FOR SOLVENT AND DETERGENT RESISTANCE ARE NOT REQUIRED. THE LABEL SHOULD BE THE PRESSURE SENSITIVE ADHESIVE TYPE. ADDITIONAL PERFORMANCE REQUIREMENTS THAT MUST BE MET ARE AS FOLLOWS:
      - a) THE LABEL MATERIAL WILL BE MINIMUM OF 6.8 MIL THICK (7 MIL NOMINAL). MATERIAL WILL PROVIDE A MINIMUM OF 42 LBS/1-INCH WIDE TENSILE STRENGTH AT BREAK WHEN TESTED IAW ASTM D882. MATERIAL WILL PROVIDE A MINIMUM OF 6600 GRAMS (66 NEWTONS) OF PUNCTURE PROPAGATION AND TEAR RESISTANCE WHEN TESTED IAW ASTM D2582.
      - b) EACH LABEL SHALL BE NO GREATER THAN 4 INCHES BY 4 INCHES SQUARE. NEW PRODUCTION SHALL HAVE LABELS OF MINIMUM SIZE WITH MINIMUM AMOUNT OF WHITE SPACE. FORMAT IS NOT MANDATED BUT THE INFORMATION SHOULD BE GROUPED BY NSN OR PART NUMBER AND THEN BY SERIAL NUMBER FOR EACH LOT NUMBER IF APPLICABLE.
    - 2) THE BAR CODE SYMBOLOGY AND HUMAN READABLE INFORMATION (HRI) THAT ARE TO BE APPLIED SHOULD BE THE STANDARD DOD SYMBOLOGY AS DESCRIBED IN ANSI/AIM BC1 (UNIFORM SYMBOLOGY SPECIFICATION CODE 39). THE ANSI/AIM BC1 IS A DOCUMENT PUBLISHED BY AIM USA AND MAY BE OBTAINED DIRECTLY FROM AIM USA BY WRITING TO 634 ALPHA DRIVE, PITTSBURGH PA 15328-2802 OR CALL (412) 963-8588. THE HRI SHALL BE AN EXACT INTERPRETATION OF THE DATA ENCODED IN THE BAR CODE AND SHOULD NOT CONTAIN ANY SPACES OR DASHES, THE PREFERRED LOCATION FOR THE HRI IS BELOW THE BAR CODE MARKINGS.
    - 3) BAR CODE RESTRICTIONS:
      - a) DENSITY OF THE BAR CODE SHALL BE 9.4 CHARACTERS PER INCH UNLESS OTHERWISE SPECIFIED.
      - b) HEIGHT OF BAR CODE SHALL BE 0.25 INCH OR GREATER. THE HEIGHT OF THE BARS MAY EXTEND TO THE EDGE OF THE LABEL.
      - c) DISTANCE BETWEEN THE BAR CODE AND THE HRI WILL BE BETWEEN 0.003 AND 0.010 INCH. THE PREFERRED DISTANCE IS 0.003.
      - d) HEIGHT OF THE HRI SHALL BE BETWEEN 0.09 AND 0.15 INCH. THE PREFERRED HEIGHT IS 0.09.