

WR-51/85
Change Notice 2
11 February 1972

NAVAL ORDNANCE SYSTEMS COMMAND
DEPARTMENT OF THE NAVY
WEAPONS REQUIREMENT, TRUCKLOADING

Trailer-on-Flat-Car (TOFC) or Container-on-Flat-Car (COFC)

Air Force Unit Load

TPO 1325-294-4152

This notice forms a part of WR-51/85 dated 25 July 1969 and is mandatory for use by establishments of the Naval Systems Command within the Naval Material Command.

Page 1

1. Add in title after "TPO-1325-294-4152" the following "REV. G or H".
2. Add in Unit Load Data after "TPO-1325-294-4152" the following "REV. G or H".

Page 2

1. Add in General Note 2 after "TPO-1325-294-4152" the following "REV. G or H".

Distribution
WR-51 & WR-52
distribution list

Preparing Activity
NAD Earle (NWHL)

WR-51/85
Change Notice 1
12 October 1970

NAVAL ORDNANCE SYSTEMS COMMAND
DEPARTMENT OF THE NAVY
WEAPONS REQUIREMENT, TRUCKLOADING

Trailer-on-Flat Car (TOFC) or Container-on-Flat Car (COFC)

Bomb, General Purpose, Mk 82 & Mods (500 lb)

With Plastic Nose Plug

Air Force Unit Load

This notice forms a part of WR-51/85 dated 25 July 1969 and is mandatory for use by establishments of the Naval Systems Command within the Naval Material Command.

Page 1

1. Delete in title "With Plastic Nose Plug".
2. Add in title, underneath "Air Force Unit Load", the following line "TPO-1325-294-4152".

Distribution

WR-51 & WR-52
distribution list

Preparing Activity

NAD Earle (NWHL)

Code Ident
10001

Naval Ordnance Systems Command
Department of the Navy

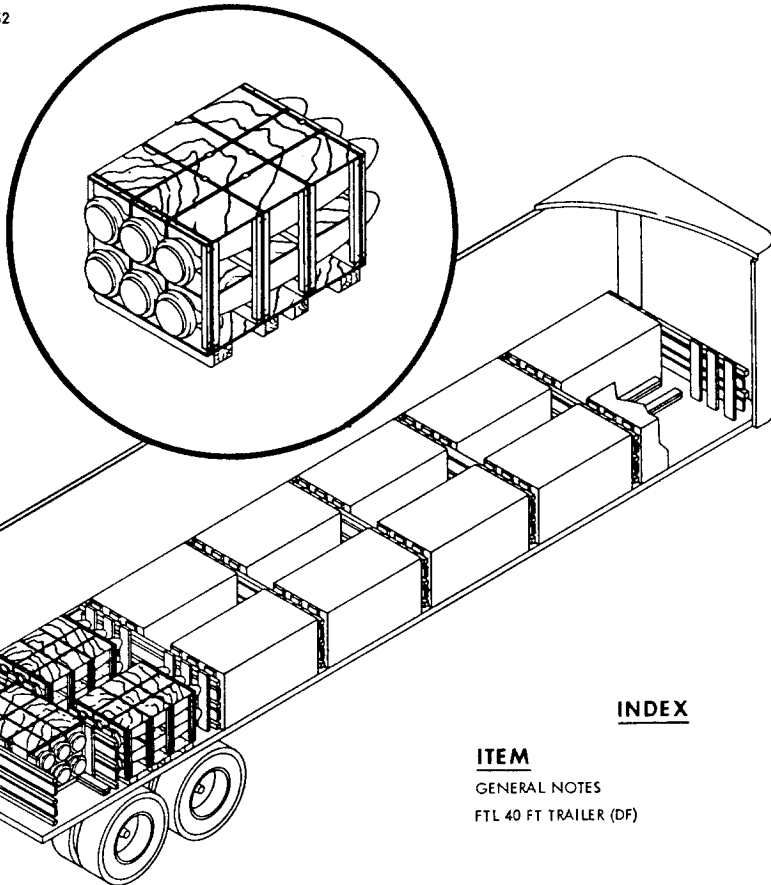
WR-51/85

25 JULY 1969

WEAPONS REQUIREMENT, TRUCKLOADING
Trailer-On-Flat-Car (TOFC) or Container-On-Flat-Car (COFC)
BOMB, GENERAL PURPOSE, MK 82 AND MODS (500 LB)
WITH PLASTIC NOSE PLUG
AIR FORCE UNIT LOAD

UNIT LOAD DATA

WEIGHT 3200 LBS
DIMENSIONS 61 3/4 L X 36 W X 32 1/2 H
CUBE 41.2 CU FT
D.O.T. HAZARD CLASSIFICATION EXPLOSIVES A
AIR FORCE DWG NO. TPO 1325-294-4152



THIS WR SUPERSEDES
AND CANCELS ALL PRIOR
DRAWINGS COVERING TRUCKLOADING
OF THIS ITEM
UNLESS OTHERWISE SPECIFIED
DIMENSIONS ARE IN INCHES

INDEX

ITEM	PAGE
GENERAL NOTES	2
FTL 40 FT TRAILER (DF)	2 & 3

NONE	PALLETIZING (SEE UNIT LOAD DATA ABOVE)
52/74	CARLOADING
51/81	TRUCKLOADING (HIGHWAY ONLY)
WR NO.	ASSOCIATED PROCESS

REV LTR	REVISION DESCRIPTION	DATE	TDA	BUXPL	SYSCOM

**AUTHORIZED AND RELEASED
FOR TRAILER-ON-FLAT-CAR (TOFC)
OR CONTAINER-ON-FLAT-CAR (COFC)
USE.**

APPROVED BY BUREAU OF EXPLOSIVES

A. F. Grassmuck MILITARY ASSISTANT 5/28/69
SIGNATURE DATE

J. E. Kelly NWHL 6/13/69
SIGNATURE TECHNICAL DIRECTING ACTIVITY (TDA) DATE
E. G. Albrecht AIR 53442 7/1/69
SIGNATURE [AIR] () SYSCOM, BY DIRECTION DATE

ORIGINATOR *C. P. Troutman* 6/12/69
SIGNATURE

NAVAL WEAPONS HANDLING LABORATORY
U.S.N.A.D. EARLE, NEW JERSEY

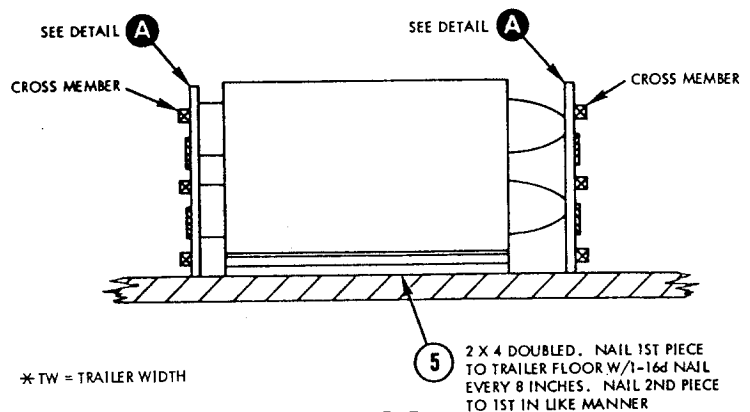
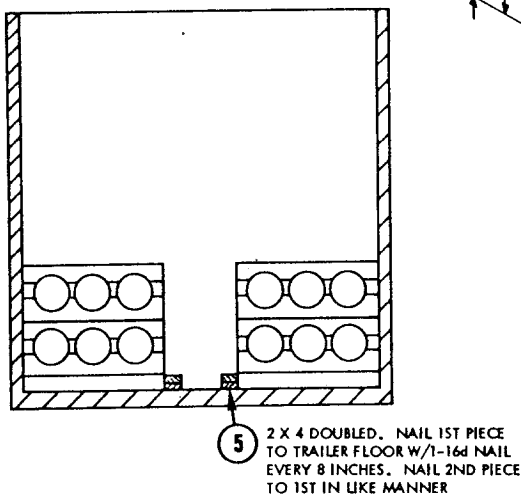
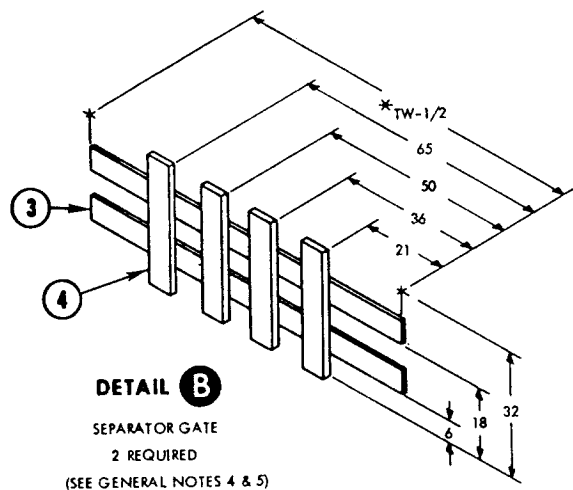
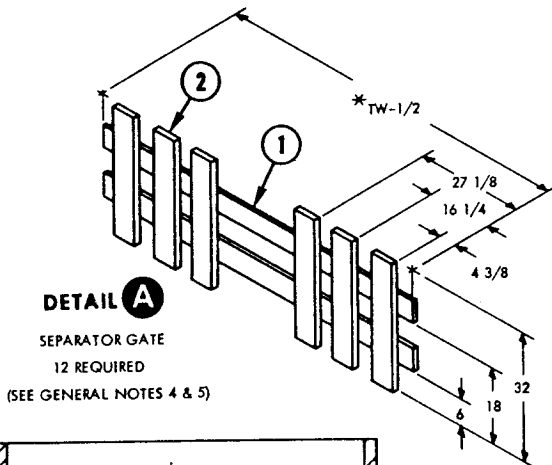
GENERAL NOTES

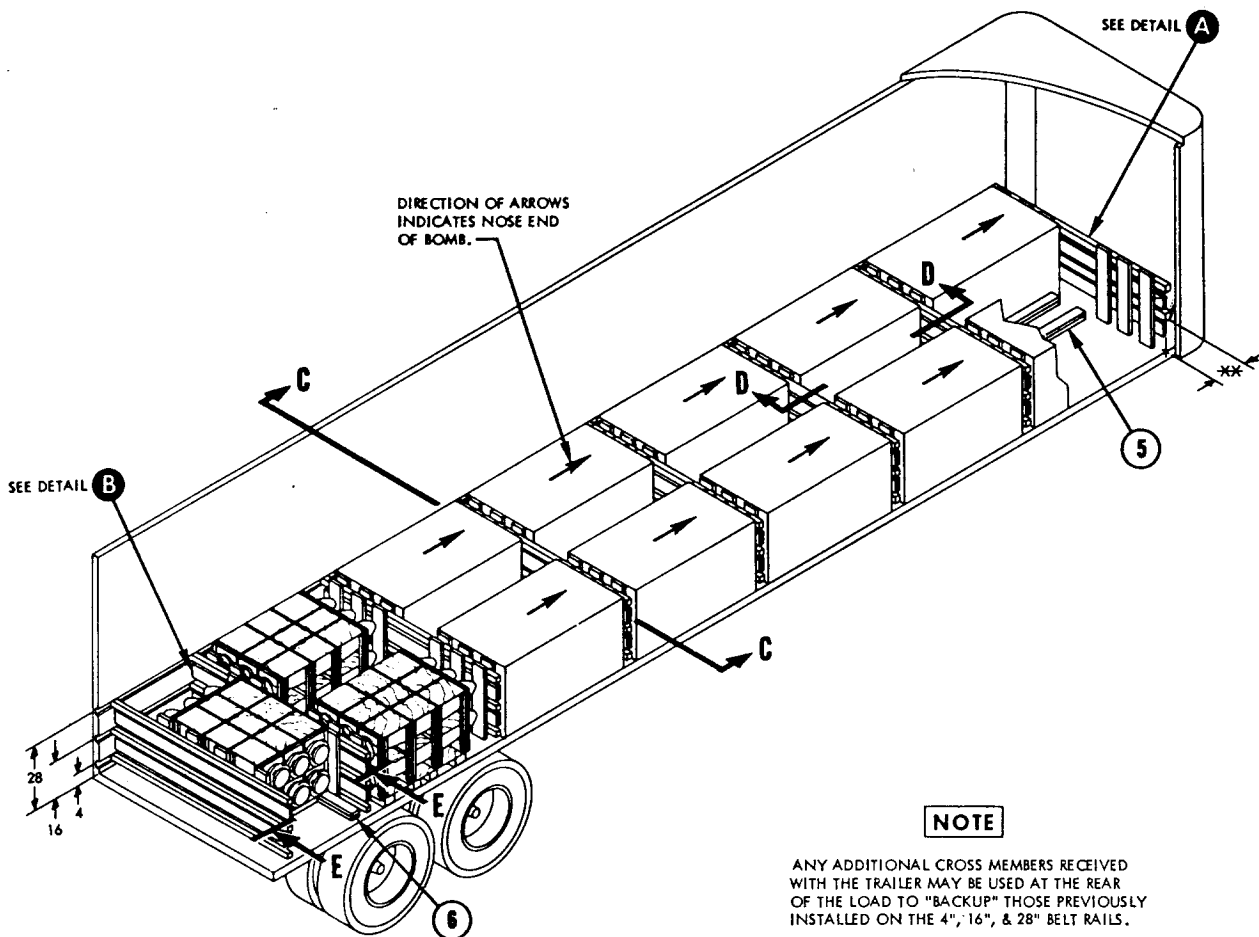
1. THIS DOCUMENT GIVES DETAILED INSTRUCTIONS FOR LOADING THE AIR FORCE UNIT LOAD OF 500 LB GENERAL PURPOSE BOMBS, MK 82 AND MODS WHEN SHIPPING TRAILER-ON-FLAT-CAR (TOFC) OR CONTAINER-ON-FLAT-CAR (COFC). BOMBS MUST HAVE PLASTIC NOSE PLUGS.
2. BOMB SHALL BE PALLETIZED IN ACCORDANCE WITH AIR FORCE DRAWING NUMBER TPO 1325-294-4152. NO OTHER LOADS ARE AUTHORIZED FOR SHIPMENT PER THIS DOCUMENT.
3. DF EQUIPPED VANS AND CONTAINERS SHALL BE IN CONFORMANCE WITH AND SHIPPED ON FLAT CARS COMPLYING WITH BUREAU OF EXPLOSIVES PAMPHLET 6C.
4. POSITION SEPARATOR GATES WITH THE VERTICAL MEMBERS TOWARDS THE UNIT LOAD AND THE HORIZONTAL MEMBERS TOWARDS THE DF CROSS MEMBER.
5. SEPARATOR GATES OF 1/2 INCH PLYWOOD MAY BE USED AS AN ALTERNATE FOR SEPARATOR GATES OF DIMENSIONAL LUMBER SHOWN IN DETAIL A AND DETAIL B. PLYWOOD SEPARATOR GATES SHALL BE 1/2 X 90 X 32 AND MAY BE IN TWO PIECES JOINED TOGETHER WITH TWO 2 X 4 CLEATS POSITIONED NOT TO INTERFERE WITH THE UNIT LOAD.
6. DF CROSS MEMBERS SHALL BE POSITIONED AGAINST THE SEPARATOR GATES AS TIGHT AS THE ADJUSTMENT HOLES OF BELT RAILS PERMIT.

CAUTION

WHEN POSITIONING CROSS MEMBERS, MAKE A VISUAL CHECK TO ENSURE THAT CROSS MEMBERS ARE LOCKED SECURELY IN PLACE.

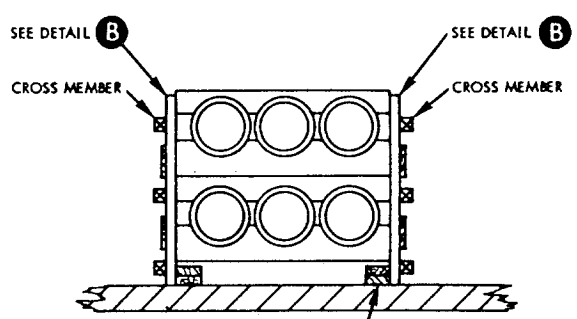
7. THE MAXIMUM GROSS WEIGHT OF THE TRACTOR-TRAILER AND THE ALLOWABLE AXLE WEIGHTS ARE THE RESPONSIBILITY OF THE CARRIER. THE CARRIER WILL ADVISE THE SHIPPER OF THESE LIMITATIONS AND THE SHIPPER SHALL LOAD THE TRAILER IN SUCH A MANNER THAT THE TRACTOR-TRAILER WILL NOT EXCEED THESE LIMITATIONS.
8. AFTER BLOCKING AND BRACING HAS BEEN INSPECTED, CLOSE AND SEAL TRAILER DOORS AND ATTACH "EXPLOSIVES A" PLACARD TO BOTH SIDES, FRONT, AND BACK OF TRAILER OR CONTAINER.
9. APPLICABLE MATERIAL SPECIFICATIONS: DUNNAGE LUMBER, MM-L-751; NAILS FF-N-105, COMMON CEMENT COATED; STRAPPING QQ-5-781, TYPE 1, CLASS A; PLYWOOD, COMMERCIAL STANDARD CS45, GRADE INTERIOR C-D.
10. FOR GENERAL TRUCKLOADING PROCEDURES REFER TO THE GENERAL TRUCKLOADING WEAPONS REQUIREMENT, WR-51.





NOTE

ANY ADDITIONAL CROSS MEMBERS RECEIVED WITH THE TRAILER MAY BE USED AT THE REAR OF THE LOAD TO "BACKUP" THOSE PREVIOUSLY INSTALLED ON THE 4", 16", & 28" BELT RAILS.



6 2 X 4 DOUBLED. NAIL 1ST PIECE TO TRAILER FLOOR W/1-16d NAIL EVERY 8 INCHES. NAIL 2ND PIECE TO 1ST IN LIKE MANNER.

VIEW E-E

TRUCKLOAD DATA

NUMBER OF UNIT LOADS	13
WEIGHT (W/O DUNNAGE)	41,600 LBS
WEIGHT (W/DUNNAGE)	42,560 LBS
NUMBER OF CROSS MEMBERS REQUIRED	24

** POSITION FIRST CROSS MEMBERS AS FAR FORWARD AS POSSIBLE.

* TW = TRAILER WIDTH

PIECE NO.	DESCRIPTION	SIZE	NO. PCS REQD	NAIL TO	NAILS	
6	SLEEPER	2 X 4 X 18	8		SEE VIEW E-E	
5	SLEEPER	2 X 4 X 48	24		SEE SECTION C-C	
4	VERTICAL	1 X 6 X 32	8	SEE 3	-	-
3	HORIZONTAL	1 X 6 X TW* ^{-1/2}	4	4	3/Joint CLINCHED	8d
2	VERTICAL	1 X 6 X 32	72	SEE 1	-	-
1	HORIZONTAL	1 X 6 X TW* ^{-1/2}	24	2	3/Joint CLINCHED	8d
					NUMBER	SIZE
					NAILS	

LIST OF MATERIAL AND NAILING DATA