

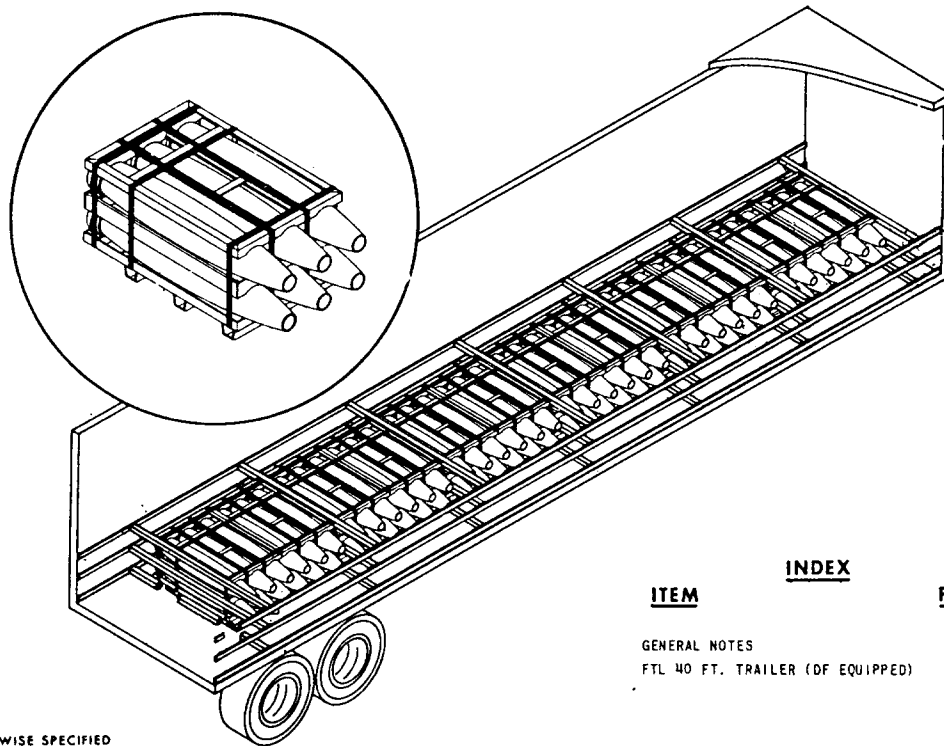
Code Ident
10001

Naval Ordnance Systems Command
Department of the Navy
WEAPONS REQUIREMENT, TRUCKLOADING
Trailer-On-Flat-Car (TOFC) or Container-On-Flat-Car (COFC)
500 LB. L.D. BOMB MK 82 & MODS, PALLETIZED
FLEET ISSUE UNIT LOAD WR-54/31

WR-51/34
7 November 1967

UNIT LOAD DATA

WEIGHT - 3056 LBS.
DIMENSIONS - 61 13/16 L x 33 3/4 W x 27 1/16 H
CUBE - 32.7 CU. FT.



UNLESS OTHERWISE SPECIFIED
DIMENSIONS ARE IN INCHES

ITEM	INDEX	PAGE
GENERAL NOTES		2
FTL 40 FT. TRAILER (OF EQUIPPED)		2 & 3

54/31	PALLETIZING						
52/10	CARLOADING						
51/6	TRUCKLOADING						
WR NO.	ASSOCIATED PROCESS	REV LTR	REVISION DESCRIPTION	DATE	TDA	BUXPL	SYSCOM APPROVAL
AUTHORIZED AND RELEASED FOR TRAILER-ON-FLAT-CAR (TOFC) OR CONTAINER-ON-FLAT-CAR (COFC) USE. WHEN NOT SHIPPING TOFC OR COFC, USE WR-51/6.		APPROVED BY BUREAU OF EXPLOSIVES <i>A. J. Grassmuck</i> MILITARY ASSISTANT 12/2/66 SIGNATURE DATE					
<i>J. E. Kelly</i> RWHL 12/3/66 SIGNATURE TECHNICAL DIRECTING ACTIVITY (TDA) DATE		ORIGINATOR <i>C. P. Troutman</i> 12/12/66 SIGNATURE					
<i>P. E. Albert</i> 12/19/66 SIGNATURE (AIR) (S) SYSCOM, BY DIRECTION DATE		NAVAL WEAPONS HANDLING LABORATORY U.S.N.A.D. EARLE, NEW JERSEY					

GENERAL NOTES

1. THIS DOCUMENT PROVIDES DETAILED INSTRUCTIONS FOR LOADING 500 LB. L.D. BOMBS, PALLETIZED FLEET ISSUE, IN DF EQUIPPED TRAILERS OR CONTAINERS WHEN SHIPPING TRAILER-ON-FLAT-CAR (TOFC) OR CONTAINER-ON-FLAT-CAR (COFC).
2. BOMBS SHALL BE PALLETIZED IN ACCORDANCE WITH WR-54/31. NO OTHER PALLET LOADS ARE AUTHORIZED FOR SHIPMENT PER THIS DOCUMENT.
3. DF EQUIPMENT SHALL BE IN CONFORMANCE WITH AND SHIPPED ON FLAT CARS COMPLYING WITH BUREAU OF EXPLOSIVES PAMPHLET 6C, APPENDIX NO. 1.
4. FOR GENERAL TRUCKLOADING PROCEDURES AND REGULATIONS REFER TO THE GENERAL WEAPONS REQUIREMENT (WR-51).

FTL 40 FT. TRAILER (DF EQUIPPED)

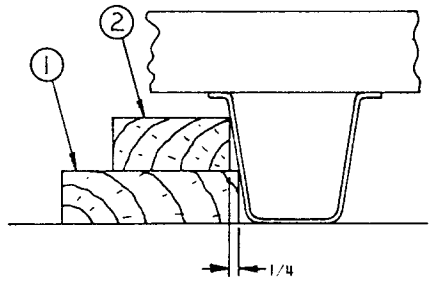
A FULL TRUCKLOAD FOR A 40-FOOT DF TRAILER CONSISTS OF 12 UNIT LOADS OF 6 BOMBS EACH FOR A TOTAL OF 72 BOMBS. LOAD AND DUNNAGE AS FOLLOWS:

1. INSTALL A CROSS MEMBER ON THE FIRST, SECOND, AND THIRD BELT RAILS AND 28 INCHES FROM THE FORWARD END OF THE TRAILER. NOTE: BELT RAILS ARE NUMBERED FROM THE TRAILER FLOOR UP.

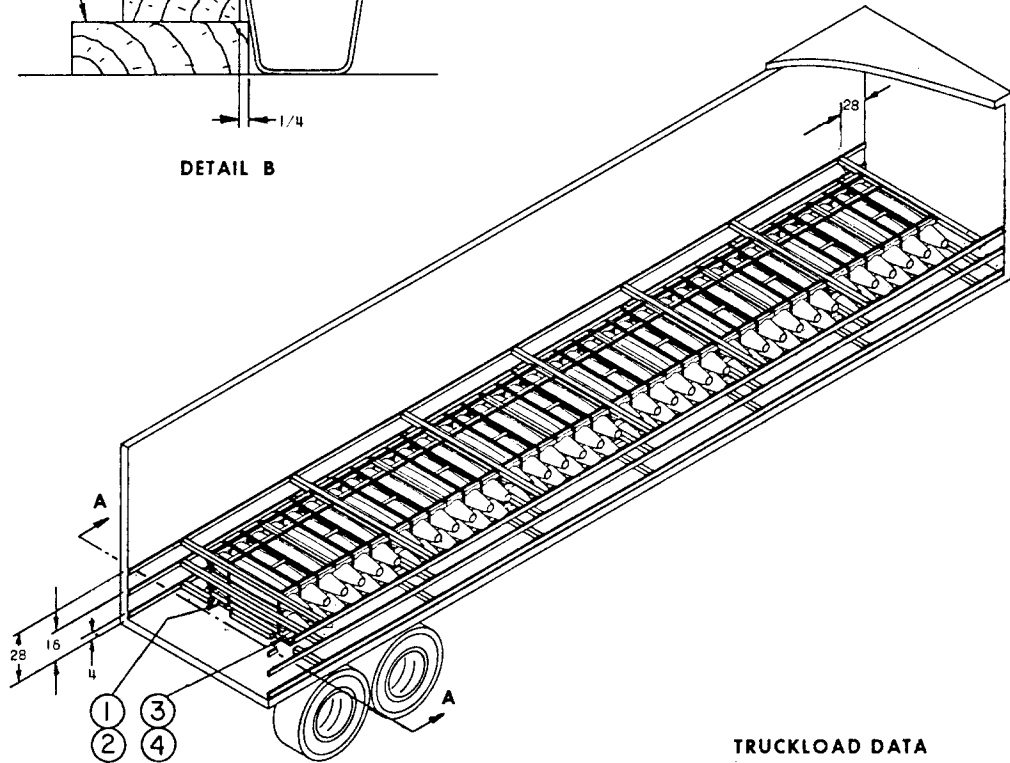
CAUTION

WHEN POSITIONING THE CROSS MEMBERS, MAKE A VISUAL CHECK TO ENSURE THAT CROSS MEMBERS ARE LOCKED SECURELY IN PLACE.

2. POSITION ONE SLEEPER, PIECE 1, ON TRAILER FLOOR WITH FORWARD END OF SLEEPER EVEN WITH PREVIOUSLY INSTALLED CROSS MEMBERS AND 18 INCHES TO LEFT OF CENTER LINE OF TRAILER AS SHOWN IN SECTION A-A. NAIL TO TRAILER FLOOR WITH 16d NAILS EVERY 8 INCHES. NAIL SLEEPER, PIECE 2, TO PIECE 1 AS SHOWN IN DETAIL B. USE ONE 16d NAIL EVERY 8 INCHES.
3. NAIL ONE SLEEPER, PIECE 3, ON TRAILER FLOOR WITH FORWARD END OF SLEEPER EVEN WITH PREVIOUSLY INSTALLED CROSS MEMBERS AND 36 INCHES TO THE RIGHT OF THE PREVIOUSLY INSTALLED SLEEPER AS SHOWN IN SECTION A-A, USING 16d NAILS EVERY 8 INCHES. NAIL SLEEPER, PIECE 4, TO PIECE 3 WITH 16d NAILS EVERY 8 INCHES AND OFFSET TO THE RIGHT 1/4 INCH.
4. POSITION THE FIRST UNIT LOAD IN TRAILER WITH BOMB NOSES TO THE RIGHT. PLACE AGAINST CROSS MEMBERS AND INSTALLED SLEEPERS. POSITION SECOND UNIT LOAD AGAINST FIRST IN LIKE MANNER.
5. INSTALL A CROSS MEMBER ON THE FIRST, SECOND, AND THIRD BELT RAILS. POSITION MEMBERS FIRMLY AGAINST UNIT LOADS.
6. CONTINUE LOADING UNTIL 12 UNIT LOADS HAVE BEEN LOADED, USING PROCEDURES IN STEPS 2, 3, 4, AND 5.
7. ATTACH SHIPPING DOCUMENTS TO REAR DUNNAGE. CLOSE AND SEAL TRAILER DOORS.



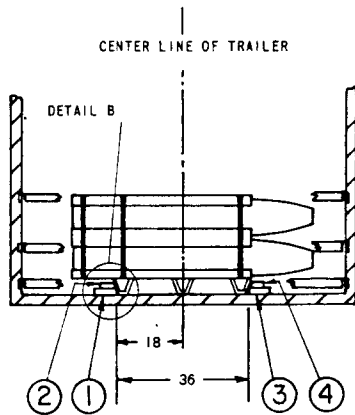
DETAIL B



TRUCKLOAD DATA

NUMBER OF UNIT LOADS 12
 TRUCKLOAD WEIGHT 36,672 LBS.
 NUMBER OF CROSSMEMBERS REQ 21

NOTE - ANY ADDITIONAL CROSSMEMBERS RECEIVED IN TRAILER MAY BE USED AT REAR OF LOAD TO "BACKUP" THOSE PREVIOUSLY INSTALLED ON 1ST, 2ND, AND 3RD BELT RAILS.



SECTION A-A

6	4	SLEEPER	WOOD DRESSED	MM-L-751	2 x 4 x 67
6	3	SLEEPER	WOOD DRESSED	MM-L-751	2 x 6 x 67
6	2	SLEEPER	WOOD DRESSED	MM-L-751	2 x 4 x 67
6	1	SLEEPER	WOOD DRESSED	MM-L-751	2 x 6 x 67
REQ.	ITEM	DESCRIPTION	MAT'L	MAT'L SPEC.	DIMENSIONS

LIST OF MATERIALS