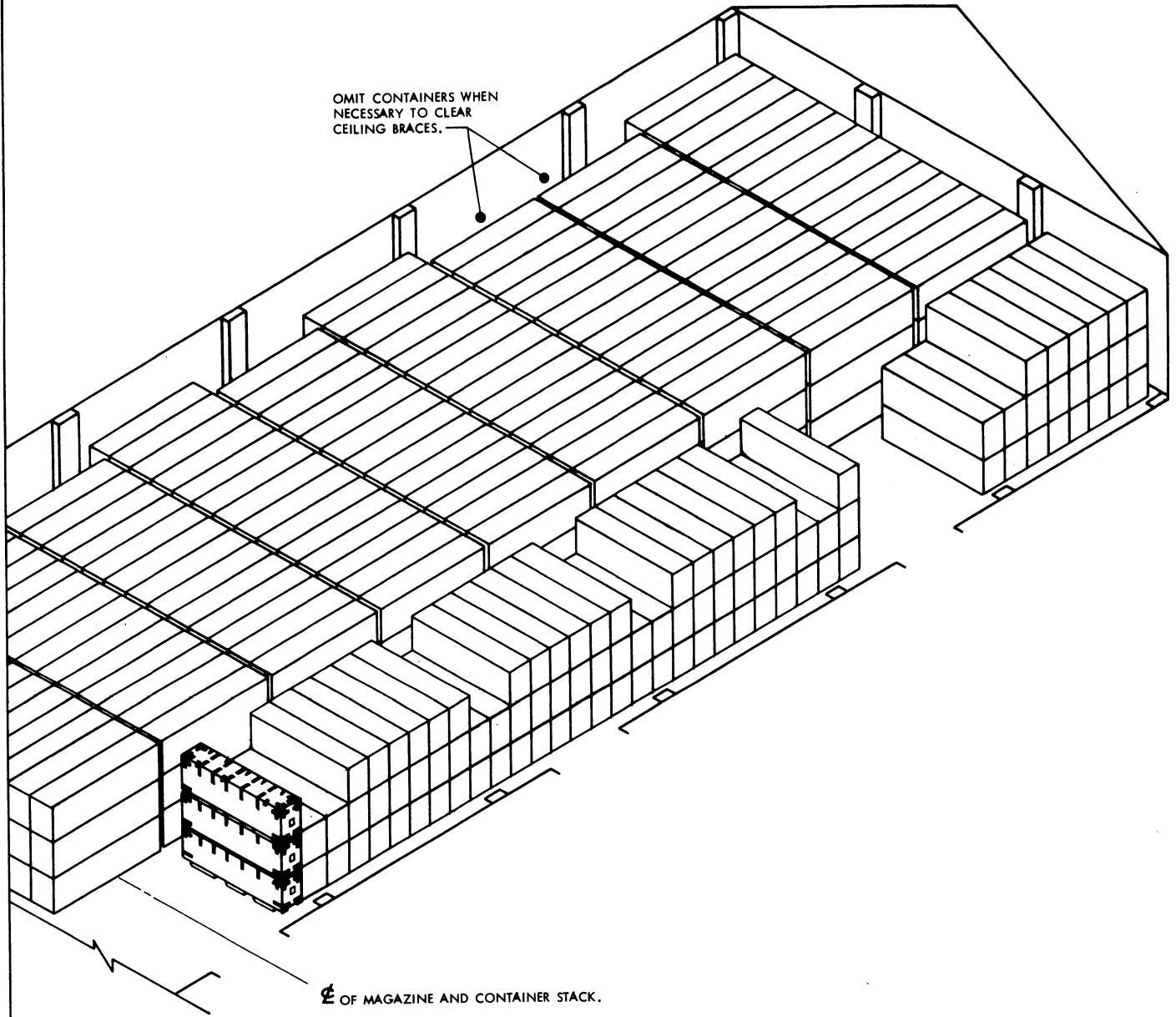


# NIKE - HERCULES

## STORAGE IN STANDARD MAGAZINE OF CONTROL SURFACE KIT PACKED IN THE M31 CONTAINER

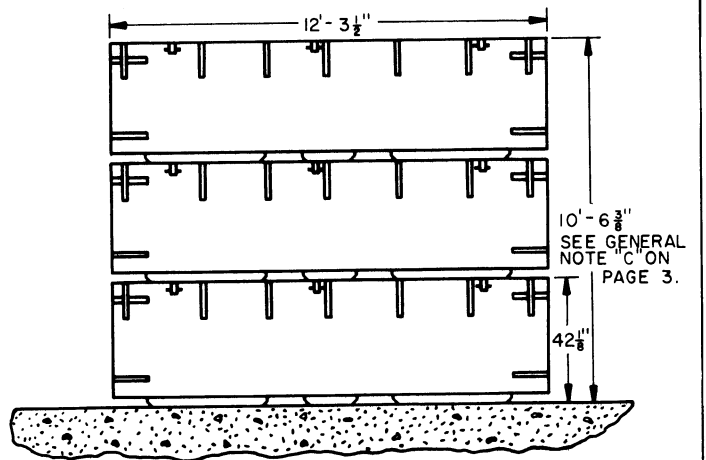
<small>DRAFTSMAN</small> <b>M. J. P.</b>	<small>PROJ. ENG.</small> <b>GWP</b>	<small>AMSMT - SMO</small> <b>[Signature]</b>	<small>SUBMITTED</small> <b>W. B. Harding, Col.</b>
<small>CHIEF</small> <b>RSH</b>	<small>ASST. CHIEF</small> <b>JDS</b>	<small>AMSMT - SMO</small> <b>[Signature]</b>	<small>COMMANDING OFFICER, SAVANNAH ARMY DEPOT</small>
<b>REVISIONS</b>			<small>APPROVED</small> <b>Andrew W. Harding</b>
1	15 JUL 68	<small>GWP</small> <b>[Signature]</b>	<small>ARMY MISSILE COMMAND</small>
		/	<small>APPROVED BY ORDER OF COMMANDING GENERAL, U. S. ARMY MATERIEL COMMAND</small> <b>[Signature]</b>
		/	<b>U. S. ARMY MATERIEL COMMAND</b>
		/	<b>21 NOVEMBER 1957</b>
		/	<small>CLASS    DIVISION    DRAWING    FILE</small>
		/	<b>19    48    5042    GM 2A9</b>

**DO NOT SCALE**

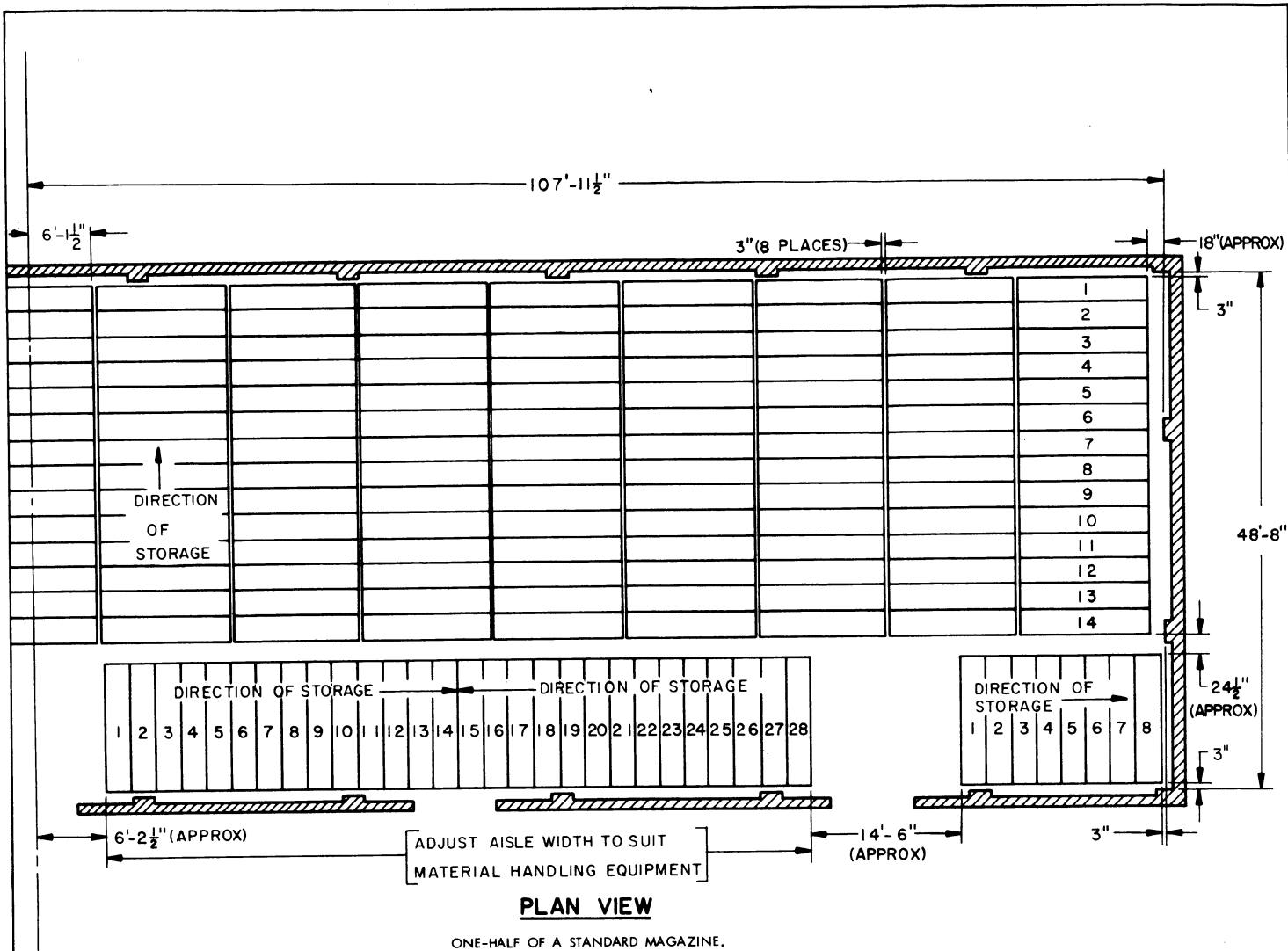


**ISOMETRIC VIEW**

ONE-HALF OF A STANDARD MAGAZINE.



**TYPICAL STACK**



☑ OF MAGAZINE AND CONTAINER STACK.

**STORAGE AS SHOWN**

ONE-HALF OF A STANDARD MAGAZINE.

ITEM	QUANTITY
CONTAINER W/CONTENTS -----	450

**GENERAL NOTES**

- A. FOR DETAILS OF CONTAINER SEE DRAWING NO. 8524211.  
CONTAINER DIMENSIONS ----- 147-1/2" LONG X 29" WIDE X 42-1/8" HIGH.  
GROSS WEIGHT ----- 1,050 POUNDS (APPROX).
- B. AISLE DIMENSIONS AS SHOWN HEREIN MAY BE ADJUSTED TO SUIT LOCAL CONDITIONS AND/OR AVAILABLE MATERIALS HANDLING EQUIPMENT.
- C. STACKS ARE LIMITED TO THREE (3) CONTAINERS HIGH IN STANDARD MAGAZINES WHICH HAVE CEILINGS. IN STANDARD MAGAZINES THAT DO NOT HAVE CEILINGS, CONTAINERS MAY BE STACKED BETWEEN THE TRUSSES TO WITHIN 18" OF THE ROOF RAFTERS AS LONG AS THE MAXIMUM FLOOR LOAD IS NOT EXCEEDED AND THE STABILITY OF THE STACK IS MAINTAINED.
- D. MAXIMUM FLOOR LOADS PRESCRIBED BY THE LOCAL POST ENGINEER WILL NOT BE EXCEEDED.

**REVISIONS**

REVISION NO. 1 DATED 15 JULY 1968 CONSISTS OF:

- 1. CHANGE IN DRAWING TITLE.
- 2. CHANGE IN CONTAINER DIMENSIONS AND WEIGHT.
- 3. CHANGES AS NECESSARY TO OPERATE DRAWING FORMAT.

