



**NOTES**

**GENERAL:**

- A. THIS DOCUMENT HAS BEEN PREPARED AND ISSUED IN ACCORDANCE WITH AMCR 740-13.
- B. THIS DRAWING DEPICTS MINIMUM PROCEDURES APPLICABLE TO THE HANDLING, STOWAGE AND BRACING ABOARD SHIPS OF ANTENNA-RECEIVER-TRANSMITTER GROUP, TARGET TRACKING, TARGET RANGING, AND MISSILE TRACKING, TRAILER MOUNTED, FOR THE NIKE-HERCULES MISSILE SYSTEM.
- C. THE ANTENNA-RECEIVER-TRANSMITTER GROUP SHOWN HEREIN MAY BE STOWED IN THE SAME HOLD OR TWEEN DECK WITH OTHER TYPES OF CARGO.
- D. LADING DATA:  
SEE "LADING DATA CHART" BELOW.

**HANDLING:**

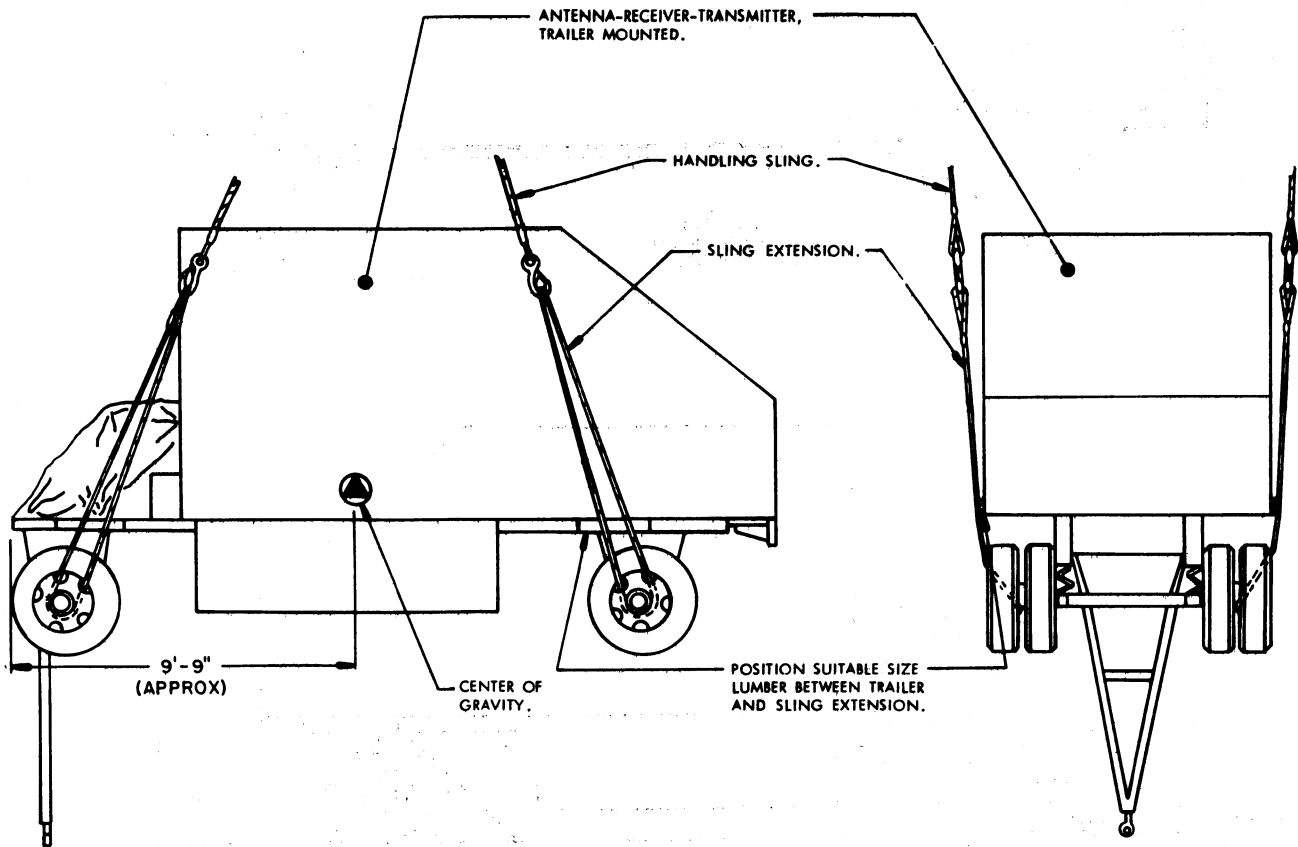
- A. PERTINENT PROVISIONS OF TITLE 46 CODE OF FEDERAL REGULATIONS APPLY.
- B. HANDLING OF THE ANTENNA-RECEIVER-TRANSMITTER GROUP SHOULD BE ACCOMPLISHED BY THE USE OF SLING EXTENSIONS, PASSED THRU THE HOLES OF THE WHEEL AND SECURELY POSITIONED UNDER THE AXLE OF THE TRAILER AS SHOWN.
- C. THE HANDLING SLING SHALL BE OF A DESIGN AND CONFIGURATION TO LIFT THE TRAILER-MOUNTED UNIT IN SUCH A MANNER THAT THE CABLE LEGS DO NOT APPLY EXCESSIVE PRESSURE WHICH WILL DAMAGE THE ITEM WHEN BEING LIFTED.
- D. ALTHOUGH DESIRABLE, A LEVEL LIFT IS NOT MANDATORY. THE CENTER OF GRAVITY OF THIS ITEM IS SHOWN TO ASSIST IN DETERMINING CABLE LENGTHS TO ASSURE A SAFE LIFT.

**STOWAGE AND BRACING:**

- A. WHEN STOWING THE TRAILER-MOUNTED, ANTENNA-RECEIVER-TRANSMITTER UNITS WITHIN THE HOLD OR TWEEN DECK, BRACING BETWEEN UNITS OR BETWEEN UNITS AND THE CARGO SHALL ONLY BE APPLIED AGAINST THE WHEELS OF THE TRAILER. ALSO, OTHER CARGO ITEMS MUST NOT BE STACKED ON TOP OF OR BE BRACED AGAINST ANY OTHER PART OF THE ANTENNA-RECEIVER-TRANSMITTER UNITS THAN AS IDENTIFIED IMMEDIATELY ABOVE.
- B. SPECIES, GRADE AND SIZE OF LUMBER TO BE USED WILL COMPLY WITH REQUIREMENTS OF CURRENT SHIPWRIGHT-CARPENTRY AND RELATED SERVICES CONTRACTS. BRACING METHODS AND LUMBER SIZES DEPICTED IN THIS DRAWING ARE CONSIDERED MINIMUM AND ARE NOT INTENDED TO CONFLICT WITH CONTRACT REQUIREMENTS.
- C. THE TRAILER-MOUNTED UNITS COMPRISING THE ANTENNA-RECEIVER-TRANSMITTER GROUP ARE EQUIPPED WITH TIE DOWN FACILITIES AS SHOWN HEREIN AND ARE SYMMETRICAL ABOUT THE LONGITUDINAL LINE OF CENTER. THE ITEM SHOULD BE SECURED FORE AND AFT TO SHIP TIE DOWN POINTS USING A MINIMUM OF TWO SYMMETRICALLY LOCATED TIE DOWN FACILITIES IN EACH DIRECTION AS TYPICALLY SHOWN WITHIN THIS DOCUMENT.
- D. A TYPICAL TIE DOWN PROCEDURE IS SHOWN AND DEPICTS THE PREFERRED METHOD OF USING CABLES AND TURNBUCKLES. IF USED, A TURNBUCKLE MUST BE OF A SIZE EQUAL IN STRENGTH TO THE MINIMUM SIZE CABLE REQUIRED TO SECURE THE ITEM. IN LIEU OF CABLES AND TURNBUCKLES, SECUREMENT MAY BE ACCOMPLISHED BY OTHER ACCEPTED METHODS.

LADING DATA CHART			
ANTENNA-RECEIVER-TRANSMITTER GROUP			
	TARGET TRACKING	TARGET RANGING	MISSILE TRACKING
LENGTH	21'-5" *	21'-5" *	21'-5" *
WIDTH	8'-1"	8'-1"	8'-1"
HEIGHT	11'-10"	11'-10"	11'-10"
GROSS WEIGHT	13,453 LBS	13,930 LBS	13,480 LBS
CUBE	2,049 CU. FT.	2,049 CU. FT.	2,049 CU. FT.

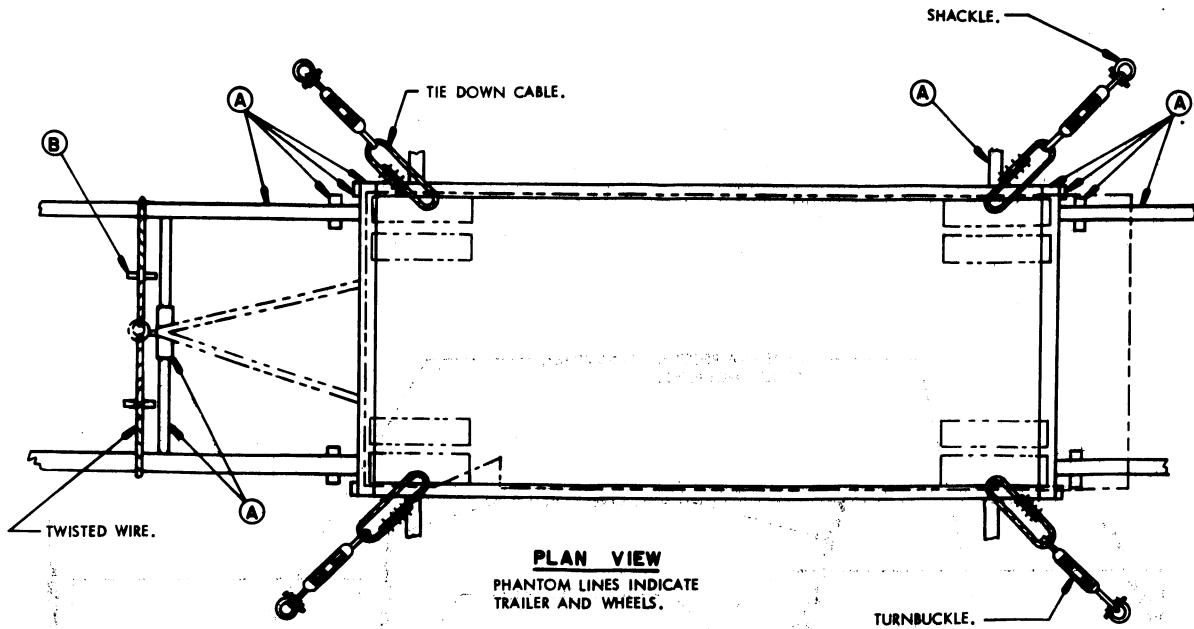
\* 28'-1" LONG WITH TOWBAR EXTENDED.



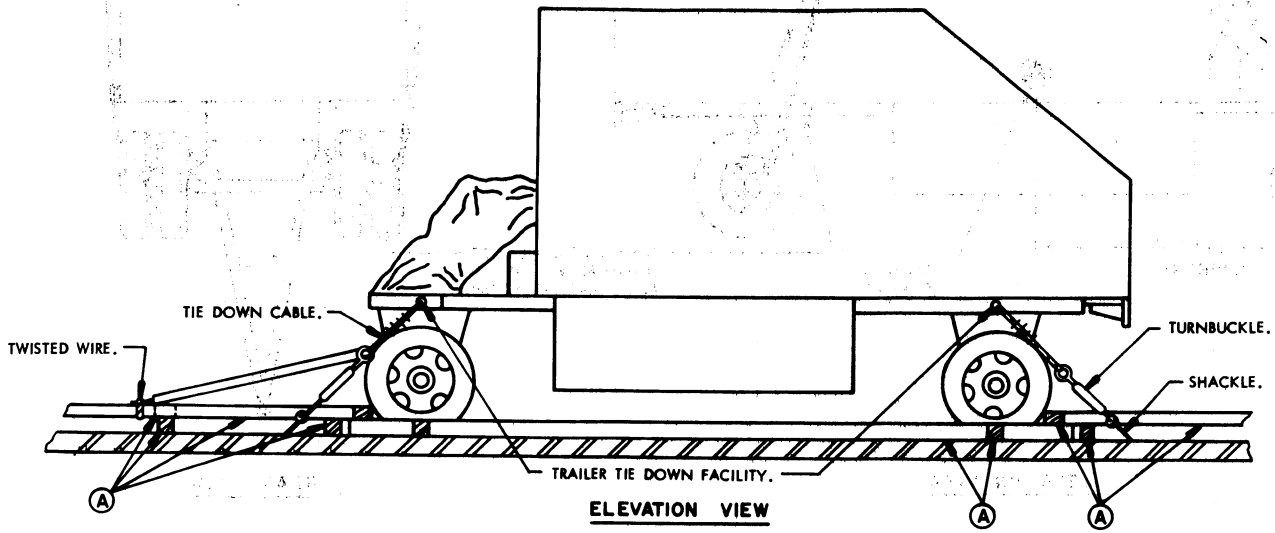
ELEVATION VIEW

REAR VIEW

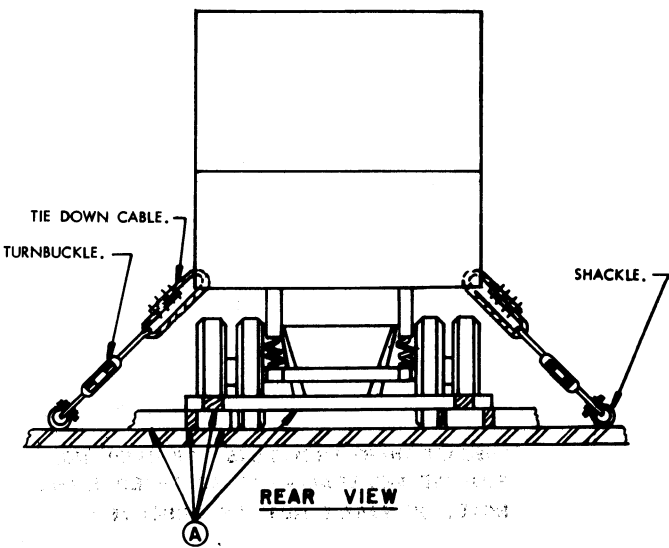
PRECAUTIONARY PROVISIONS FOR HANDLING,  
STOWAGE AND BRACING AS SPECIFIED IN THE  
NOTES ON PAGE 2 MUST BE OBSERVED



**PLAN VIEW**  
PHANTOM LINES INDICATE TRAILER AND WHEELS.



**ELEVATION VIEW**



**REAR VIEW**

MINIMUM LUMBER SIZES	
(A)	4" X 6"
(B)	2" X 2"

**PRECAUTIONARY PROVISIONS FOR HANDLING STOWAGE AND BRACING AS SPECIFIED IN THE NOTES ON PAGE 2 MUST BE OBSERVED.**