

**NOTICE
OF VALIDATION**

INCH-POUND

MIL-STD-1386/3
NOTICE 1
13 MARCH 1991

MILITARY STANDARD

**LOADING OF HAZARDOUS MATERIALS AND ASSOCIATED
ITEMS IN MILVAN CONTAINERS BOMB, GENERAL PURPOSE
MK 82 AND MODS (500 LB) AIR FORCE FLEET ISSUE UNIT LOAD
(WITH PLASTIC NOSE PLUGS)**

MIL-STD-1386/3, dated 18 August 1972, has been reviewed and determined to be valid for use in acquisition.

Preparing activity:
Navy-OS

AMSC N/A
DISTRIBUTION STATEMENT A. Approved for public release; distribution is unlimited.

FSC 8140

MILITARY STANDARD

MIL-STD-1386-3
(Navy)

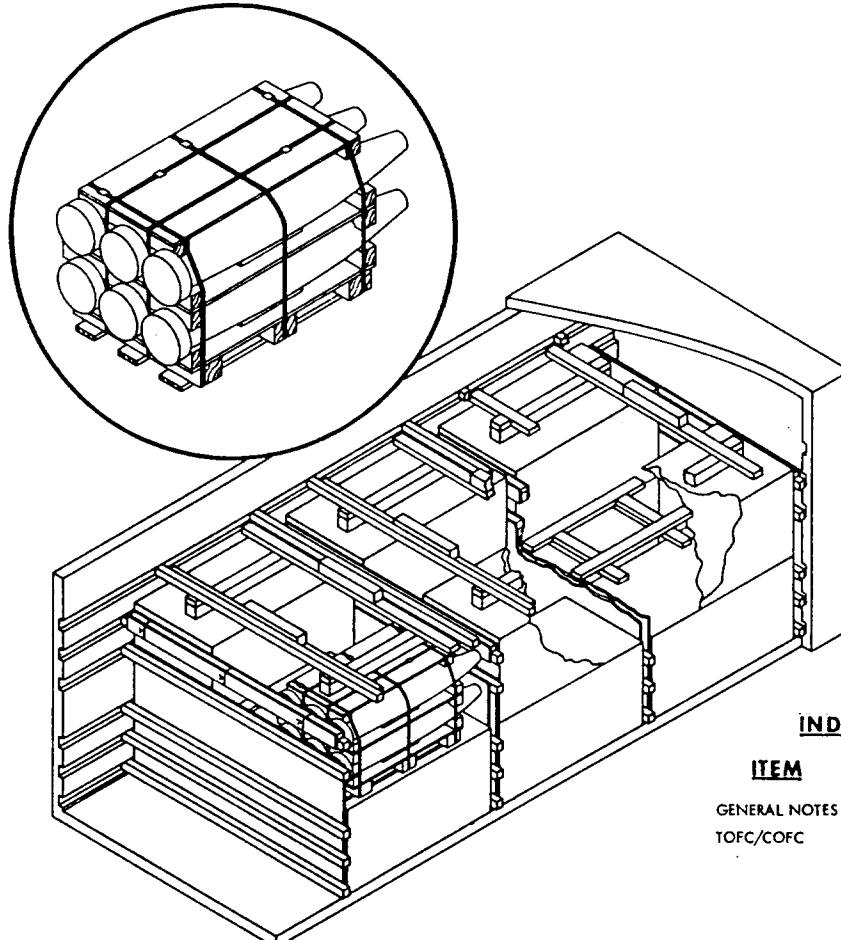
18 AUGUST 1972

LOADING OF HAZARDOUS MATERIALS AND ASSOCIATED ITEMS IN MILVAN CONTAINERS

BOMB, GENERAL PURPOSE MK 82 AND MODS (500 LBS)
AIR FORCE UNIT LOAD
(WITH PLASTIC NOSE PLUGS)

UNIT LOAD DATA

UNIT LOAD DRAWING. . . TPO 1325-294-4152, REV R
WEIGHT. 3096 LBS
DIMENSIONS. . . 61 3/4 L x 33 1/4 W x 31 1/2 H
CUBE 37.4 CU FT
DOT HAZARD CLASSIFICATION. . . . EXPLOSIVES A
COAST GUARD CLASS XA



INDEX

ITEM	PAGE
GENERAL NOTES	2
TOFC/COFC	2, 3 & 4

NOTES:

- UNLESS OTHERWISE SPECIFIED DIMENSIONS ARE IN INCHES.
- FOR CROSS REFERENCE TO ASSOCIATED PALLETIZING, TRUCKLOADING AND CARLOADING MILITARY STANDARDS REFER TO COMPREHENSIVE INDEX NWHL NO. 4200.

**AUTHORIZED FOR COFC,
CONTAINERSHIP AND MOVEMENT
ABOARD DEPOT (NON-PUBLIC)
ROADS ONLY.**

**APPROVED BY
US COAST GUARD**

R. S. Churney Capt USCG
DATE 7-19-72

**APPROVED BY
BUREAU OF EXPLOSIVES**

A. F. Grassmuck
DATE 7/25/72

M.S. Gray NWHL 8/1/72
SIGNATURE TECHNICAL DIRECTING ACTIVITY (TDA) DATE

J. E. Kelly 8/1/72
SIGNATURE (MR) SYSCOM BY DIRECTION DATE

ORIGINATOR

A. L. Oring
SIGNATURE

**NAVAL WEAPONS HANDLING LABORATORY
NAD EARLE, NEW JERSEY**

GENERAL NOTES

1. THIS DOCUMENT GIVES DETAILED INSTRUCTIONS FOR LOADING THE MILVAN CONTAINER WITH AIR FORCE UNIT LOADS OF 500 LB MK 82 LOW DRAG BOMBS. THE UNIT LOAD SHALL BE IN ACCORDANCE WITH TPO 1325-294-4152 REV. R, S, T, AND U.
2. THE MILVAN SHALL BE EQUIPPED WITH A MECHANICAL LOAD-BRACING SYSTEM THAT SATISFIES THE REQUIREMENTS OF THE BUREAU OF EXPLOSIVES PAMPHLET 6C AND SHIPPED ON FLAT CARS THAT MEET THE REQUIREMENTS OF PAMPHLET 6C.
3. IN ADDITION TO THE BELT RAILS REQUIRED BY PAMPHLET 6C, THE MILVAN CONTAINER HAS BELT RAILS AT THE 72 AND 83 INCH HEIGHT FROM THE CONTAINER FLOOR.
4. CONTAINERS ARE EQUIPPED WITH 25 CROSSMEMBERS. UNUSED CROSSMEMBERS MUST REMAIN WITH THE CONTAINER AND SHALL BE FASTENED INTO BELT RAILS FOR SHIPMENT.

CAUTION

WHEN POSITIONING CROSSMEMBERS MAKE A VISUAL CHECK TO ENSURE THAT CROSSMEMBERS ARE LOCKED SECURELY IN PLACE.

5. THE DUNNAGE SPECIFIED IS OF NOMINAL SIZE. FOR EXAMPLE, 1 x 4 MATERIAL IS ACTUALLY 3/4 THICK BY 3 5/8 WIDE AND 2 x 6 MATERIAL IS ACTUALLY 1 5/8 THICK BY 5 1/2 WIDE.
6. WHEN THE VOID BETWEEN THE CROSSMEMBER AND THE PLYWOOD SEPARATOR IS GREATER THAN ONE INCH, USE FILL MATERIAL TO SHIM BETWEEN CROSSMEMBERS AND GATE AS SHOWN IN DETAIL E, PAGE 4.
7. SHIM, PIECE 7, IS THICKNESS TO SUIT AND MAY BE ADDED TO OR OMITTED AS REQUIRED TO SECURE LADING.
8. APPLICABLE MATERIAL SPECIFICATIONS:
 - DUNNAGE LUMBER, MM-L-751;
 - NAILS, FF-N-105, COMMON CEMENT COATED;
 - PLYWOOD, COMMERCIAL STANDARD C545, GRADE INTERIOR C-D.
9. SWAY BRACE DETAIL C IS ASSEMBLED IN PLACE. PIECE 8 IS POSITIONED INBOARD OF THE BASE END AND NOSE END OF PALLET SKIDS. WITH PIECES 10 AGAINST PALLET SKIDS, NAIL TO PIECE 8 WITH THREE 10d NAILS PER JOINT. CUT PIECE 9 TO FIT BETWEEN PIECES 10 AND NAIL TO PIECE 8 WITH THREE 10d NAILS.
10. AFTER BLOCKING AND BRACING HAS BEEN INSPECTED ATTACH SHIPPING DOCUMENTS INSIDE THE CONTAINER IN AN ACCESSIBLE AREA, CLOSE AND SEAL CONTAINER DOORS, AND ATTACH APPLICABLE PLACARDS TO THE OUTSIDE OF THE CONTAINER FOR THE APPROPRIATE MODE OF TRANSPORTATION AS PRESCRIBED IN OP 2165 (VOL. 1)

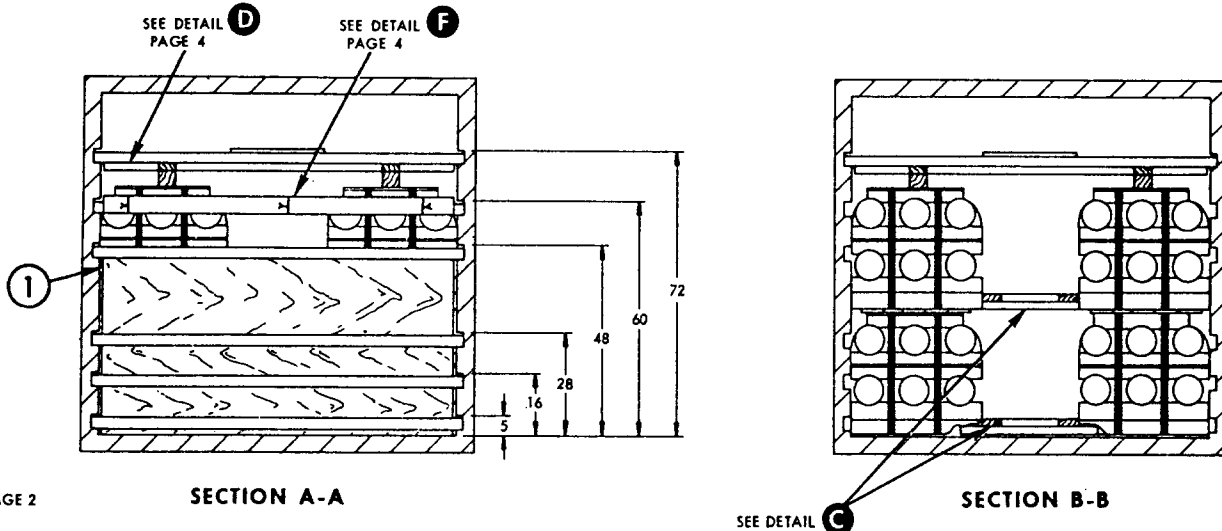
COFC AND CONTAINERSHIP

1. THE CONTAINER LOAD CONSISTS OF 12 UNIT LOADS WHICH MUST BE LOADED AND DUNNAGED IN ACCORDANCE WITH THIS DOCUMENT.

WARNING

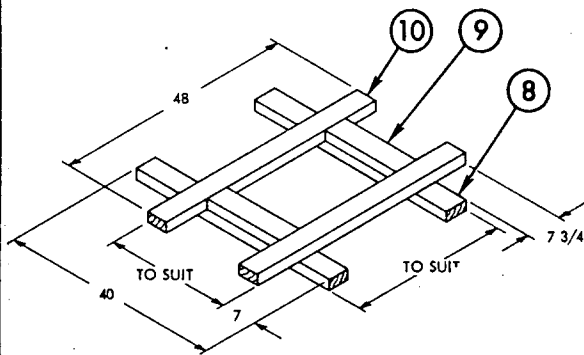
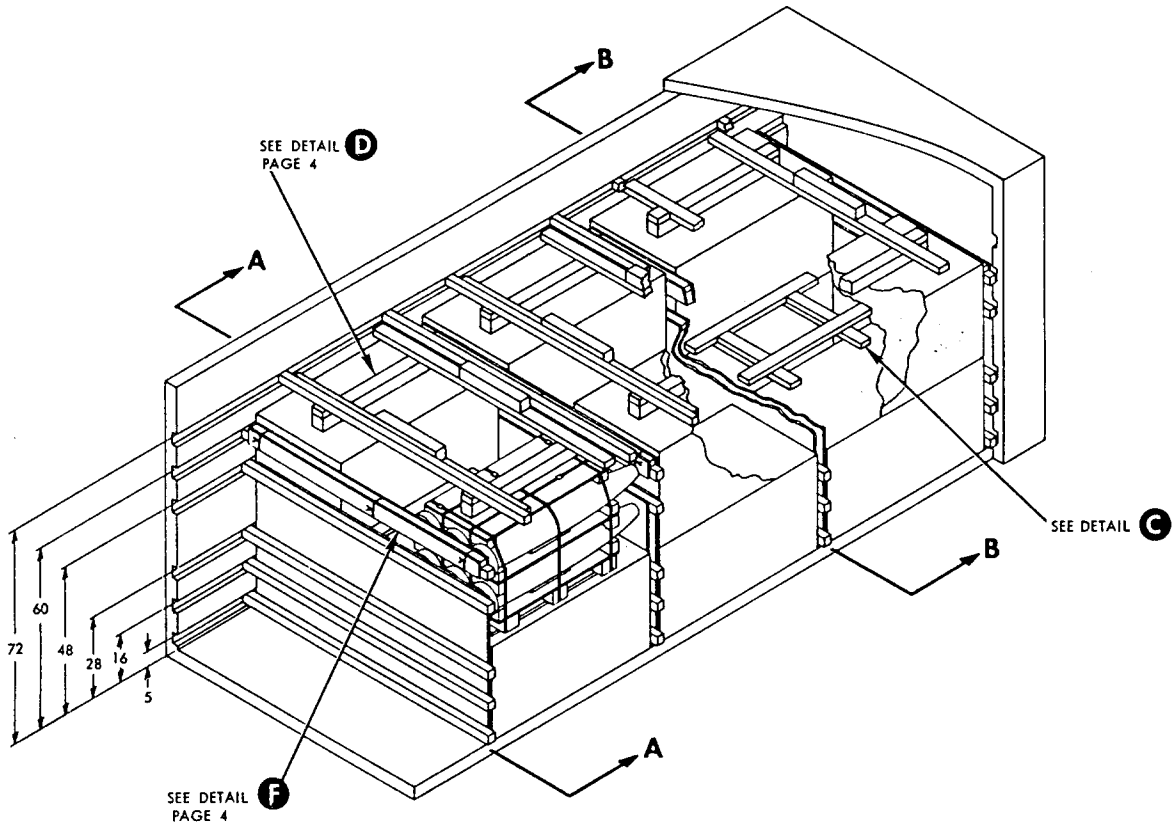
BECAUSE THE WEIGHT LOADED INTO THIS CONTAINER EXCEEDS 34,000 LBS, THE MILVAN CHASSIS CAN NOT BE USED TO TRANSPORT THE LOADED CONTAINER ON PUBLIC HIGHWAYS. THE LOADED CONTAINER MAY BE TRANSPORTED OVER DEPOT ROADS USING A MILVAN CHASSIS EQUIPPED WITH DOUBLE BOGIES OR COMMERCIAL EQUIPMENT OF APPROPRIATE CAPACITY.

2. A SEPARATOR GATE OF DIMENSIONAL LUMBER MAY BE USED AS AN ALTERNATE FOR THE PLYWOOD SEPARATOR, PIECE 1, AND THE FILLER ASSEMBLY, DETAIL F. SEE DETAIL G, PAGE 5.



CONTAINER LOAD DATA

NUMBER OF UNIT LOADS 12
 NUMBER OF CROSSMEMBERS REQ'D 25
 LOAD WEIGHT 37,152 LBS
 DUNNAGE WEIGHT 650 LBS
 CONTAINER WEIGHT 5,700 LBS
 GROSS WEIGHT 43,502 LBS



DETAIL C

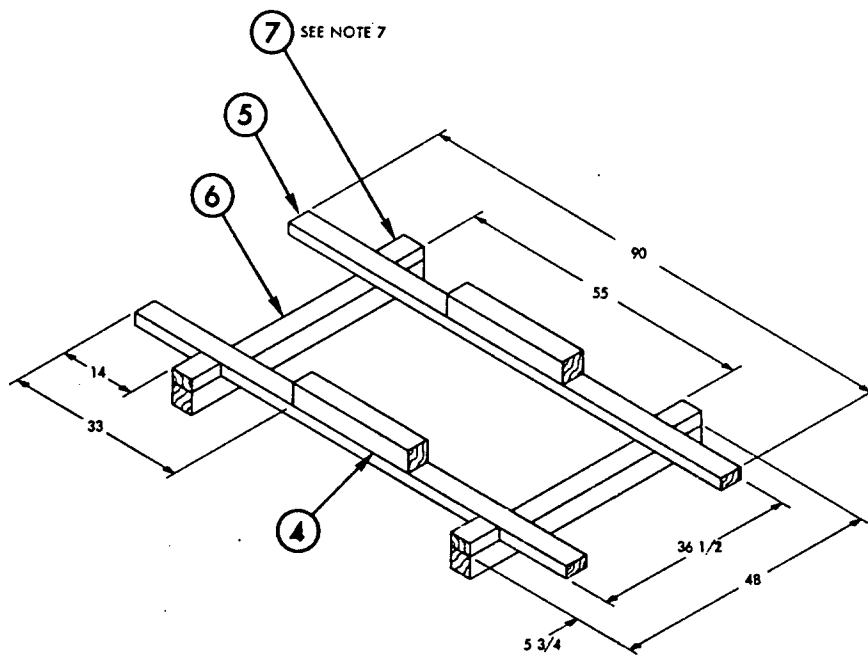
SWAY BRACE 6 REQUIRED TO BE ASSEMBLED IN PLACE
 SEE NOTE 9

* = ACTUAL MEASUREMENT

10	STRINGER	2 x 4 x 48	12	8	3/JOINT	10d
9	SPACER	2 x 4 TO SUIT	12	8	3	10d
8	SUPPORT	2 x 4 x 40	12	SEE 9 & 10	-	-
7	SHIM	4" WIDE x 5 3/4 THICKNESS TO SUIT	12	6	3	10d
6	HOLD DOWN	4 x 4 x 48	6	SEE 5	-	-
5	TIE PIECE	2 x 4 x 90	6	6	3/JOINT	10d
4	RETAINER	4 x 4 x 24	6	4	3	10d
4	RETAINER	4 x 4 x 24	6	SEE 5	-	-
3	SPACER	2 x 2 1/2* x 90	4	SEE 2	-	-
2	SHIM (PLYWOOD)	1/2 x 4 3/4* x 90	8	3	6	10d
1	SEPARATOR (PLYWOOD)	1/2 x 48 x 90	6	-	-	-
PIECE NO.	DESCRIPTION	SIZE	NO. OF PIECES REQ'D	NAIL TO	NUMBER	SIZE
					NAILS	

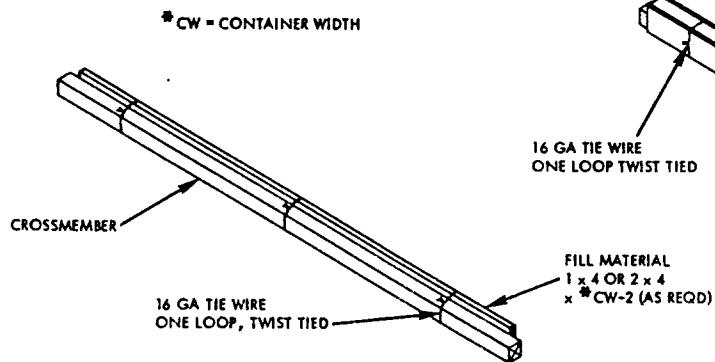
LIST OF MATERIALS & NAILING DATA

MIL-STD-1386-3 (Navy)



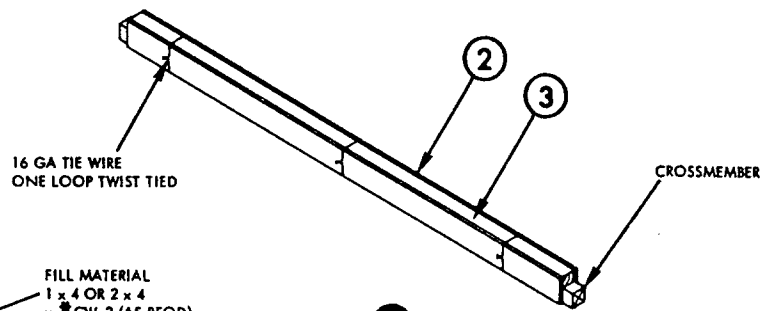
DETAIL D

HOLD DOWN 3 REQUIRED



DETAIL E

FILL MATERIAL
SEE NOTE 6



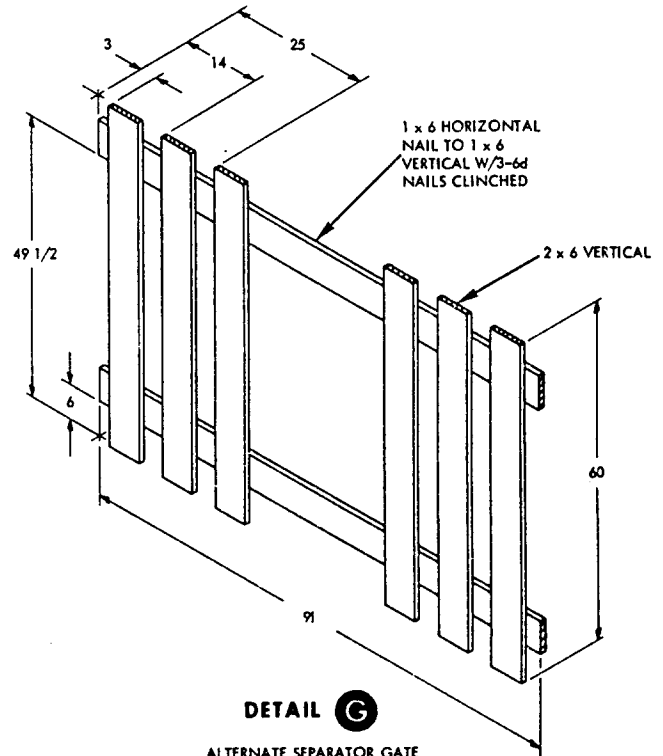
DETAIL F

FILLER ASSEMBLY 4 REQUIRED
SEE ALTERNATE SEPARATOR GATE
INSTRUCTIONS, PAGE 5

ALTERNATE SEPARATOR GATE

A SEPARATOR GATE OF 1 x 6 DIMENSIONAL LUMBER MAY BE USED AS AN ALTERNATE FOR THE PLYWOOD SEPARATOR. WHEN USING ALTERNATE GATE, DO NOT USE FILLER ASSEMBLY, DETAIL F, ON THE 60 INCH HIGH CROSSMEMBERS

POSITION SEPARATOR GATE WITH VERTICALS AGAINST UNIT LOAD



DETAIL G

ALTERNATE SEPARATOR GATE
6 REQUIRED