

NOTICE OF INACTIVATION
FOR NEW DESIGN

INCH-POUND

MIL-STD-1386-21A(OS)
NOTICE 2
25 February 1993
SUPERSEDING
NOTICE 1
13 March 1991

MILITARY STANDARD

LOADING OF HAZARDOUS MATERIALS AND ASSOCIATED ITEMS
IN MILVAN CONTAINERS-BOMB, 500 LB MK 82 MOD 2
(THERMALLY PROTECTED) ON PALLET, MHU-122/E
FLEET ISSUE UNIT LOAD

This notice should be filed in front of MIL-STD-1386-21A(OS), dated 14 March 1977.

MIL-STD-1386-21A(OS) is inactive for new design and are no longer used by the Navy except for replacement purposes.

Preparing activity:
Navy - OS

(Project 8140-N910)

AMSC N/A

FSC 8140

DISTRIBUTION STATEMENT A. Approved for public release; distribution is unlimited.

**NOTICE
OF VALIDATION**

INCH-POUND

MIL-STD-1386/21A
NOTICE 1
13 MARCH 1991

MILITARY STANDARD

**LOADING OF HAZARDOUS MATERIALS AND ASSOCIATED
ITEMS IN MILVAN CONTAINERS-BOMB, 500 LB MK 82 MOD 2
(THERMALLY PROTECTED) ON PALLET, MHU-122/E
FLEET ISSUE UNIT LOAD**

MIL-STD-1386/21A, dated 14 March 1977, has been reviewed and determined to be valid for use in acquisition.

Preparing activity:
Navy-OS

AMSC N/A
DISTRIBUTION STATEMENT A. Approved for public release; distribution is unlimited.

FSC 8140

MILITARY STANDARD

MIL-STD-1386-21 A

LOADING OF HAZARDOUS MATERIALS AND ASSOCIATED ITEMS IN MILVAN CONTAINERS

(NAVY)

14 MARCH 1977

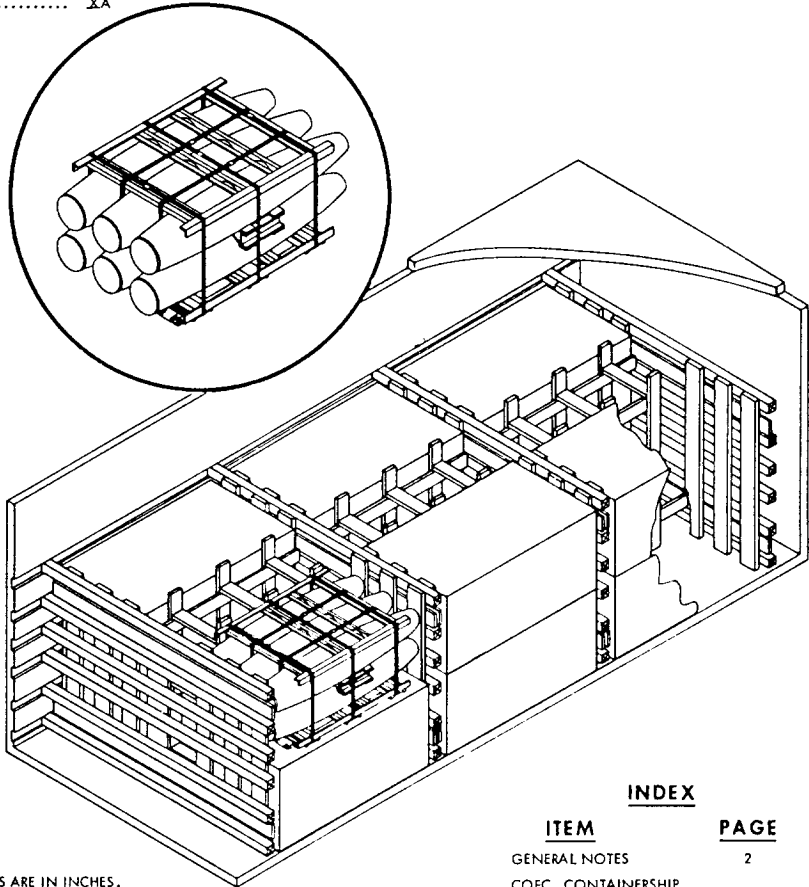
**BOMB, 500 LB MK 82 MOD 2 (THERMALLY PROTECTED)
ON PALLET, MHU-122/E
FLEET ISSUE UNIT LOAD**

UNIT LOAD DATA

UNIT LOAD DWG WR-54/239
 WEIGHT OF UNIT LOAD (APPROX) 3165 LBS
 WEIGHT OF PALLET (BOTTOM FRAME) 113 LBS
 DIMENSIONS 61 3/8 L X 35 W X 29 H
 CUBE 35.9 CU FT
 DOT HAZARD CLASSIFICATION EXPLOSIVES A
 COAST GUARD CLASS XA

SUPERSEDING
MIL-STD-1386-21 (NAVY)

1 JUNE 1973



NOTES:

- UNLESS OTHERWISE SPECIFIED DIMENSIONS ARE IN INCHES.
- FOR CROSS REFERENCE TO ASSOCIATED PALLETIZING, TRUCKLOADING AND CARLOADING MILITARY STANDARDS, REFER TO THE INDEX TO STANDARDS, MIL-HDBK-236 (NAVY).

INDEX

ITEM	PAGE
GENERAL NOTES	2
COFC, CONTAINERSHIP AND HIGHWAY DETAILS	2 & 3
	4

AUTHORIZED FOR CONTAINER-ON-FLAT-CAR (COFC), CONTAINERSHIP AND HIGHWAY SHIPMENT.

**APPROVED BY
US COAST GUARD**

P. A. Altman

DATE 22 Feb 1977

**APPROVED BY
BUREAU OF EXPLOSIVES**

A. F. [Signature]

DATE 10/20/75

M. S. Gray NWHC 2/25/77
SIGNATURE TECHNICAL DIRECTION AGENT (TDA) DATE

ORIGINATOR S. R. Petoia 8025 2/28/77
SIGNATURE

J. E. Kelly 2/28/77
SIGNATURE AIR SYSCOM, BY DIRECTION DATE

**NAVAL WEAPONS HANDLING CENTER
WPNSTA EARLE, NEW JERSEY**

GENERAL NOTES

1. THIS DOCUMENT GIVES DETAILED INSTRUCTIONS FOR LOADING THE MILVAN CONTAINER WITH FLEET ISSUE UNIT LOADS OF MK 82 MOD 2 500 LB THERMAL COATED BOMBS. THE BOMBS SHALL BE PALLETIZED IN ACCORDANCE WITH WR-54/239.
2. THE MILVAN SHALL BE EQUIPPED WITH A MECHANICAL LOAD-BRACING SYSTEM THAT MEETS THE REQUIREMENTS OF THE BUREAU OF EXPLOSIVES PAMPHLET 6 C.
3. IN ADDITION TO THE BELT RAILS REQUIRED BY PAMPHLET 6 C, THE MILVAN CONTAINER HAS BELT RAILS AT THE 72 AND 83 INCH HEIGHTS FROM THE CONTAINER FLOOR.

CAUTION

WHEN POSITIONING CROSSMEMBERS, MAKE A VISUAL CHECK TO ENSURE THAT CROSSMEMBERS ARE LOCKED SECURELY IN PLACE.

4. CONTAINERS ARE EQUIPPED WITH 25 CROSSMEMBERS. UNUSED CROSSMEMBERS MUST REMAIN WITH THE CONTAINER AND SHALL BE FASTENED INTO BELT RAILS FOR SHIPMENT.
5. WHEN THE VOID BETWEEN THE CROSSMEMBER AND THE SEPARATOR GATE IS GREATER THAN ONE INCH, USE FILL MATERIAL TO SHIM BETWEEN CROSSMEMBERS AND GATES AS SHOWN IN DETAIL D.
6. THE FILLER ASSEMBLY, DETAIL C, IS PREASSEMBLED AND SLID INTO PLACE WITH BOTTOM STOP, PIECE 7, ON THE RIGHT SIDE OF THE MILVAN, THE STRUT PIECES, SHALL BE OF SUFFICIENT LENGTH TO CAUSE THE ASSEMBLY TO FILL THE VOID BETWEEN THE UNIT LOADS. ONE INCH SLACK IS PERMITTED.

WARNING

THE FILLER ASSEMBLY MUST BE ORIENTED AS DESCRIBED ABOVE.

7. APPLICABLE MATERIAL SPECIFICATIONS:
DUNNAGE LUMBER - FED. SPEC. MM-L-751
NAILS - FED. SPEC. FF-N- 105, TYPE II, CLASS 10, COMMON BRIGHT.
8. AFTER BLOCKING AND BRACING HAS BEEN INSPECTED ATTACH SHIPPING DOCUMENTS INSIDE THE CONTAINER IN AN ACCESSIBLE AREA, CLOSE AND SEAL CONTAINER DOORS, AND ATTACH APPLICABLE PLACARDS TO THE OUTSIDE OF THE CONTAINER FOR THE APPROPRIATE MODE OF TRANSPORTATION AS PRESCRIBED IN OP 2165 (VOL. 1).

COFC, CONTAINERSHIP AND HIGHWAY

1. THIS CONTAINER LOAD CONSISTS OF 12 UNIT LOADS WHICH MUST BE LOADED AND DUNNAGED IN ACCORDANCE WITH THIS DOCUMENT.
2. THE LOADED MILVAN CONTAINER MAY BE MOVED OVER PUBLIC HIGHWAYS USING COMMERCIAL EQUIPMENT OF APPROPRIATE CAPACITY THAT MEETS THE REQUIREMENTS OF THE CODE OF FEDERAL REGULATIONS.

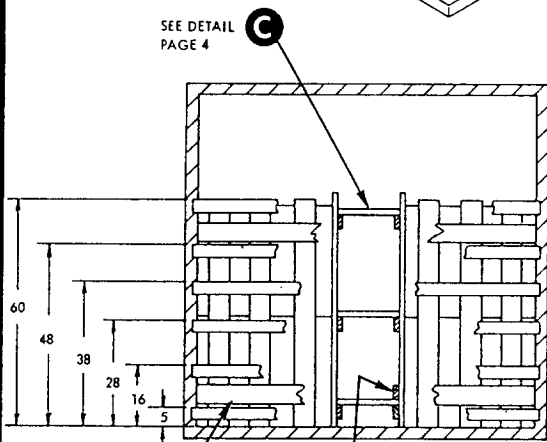
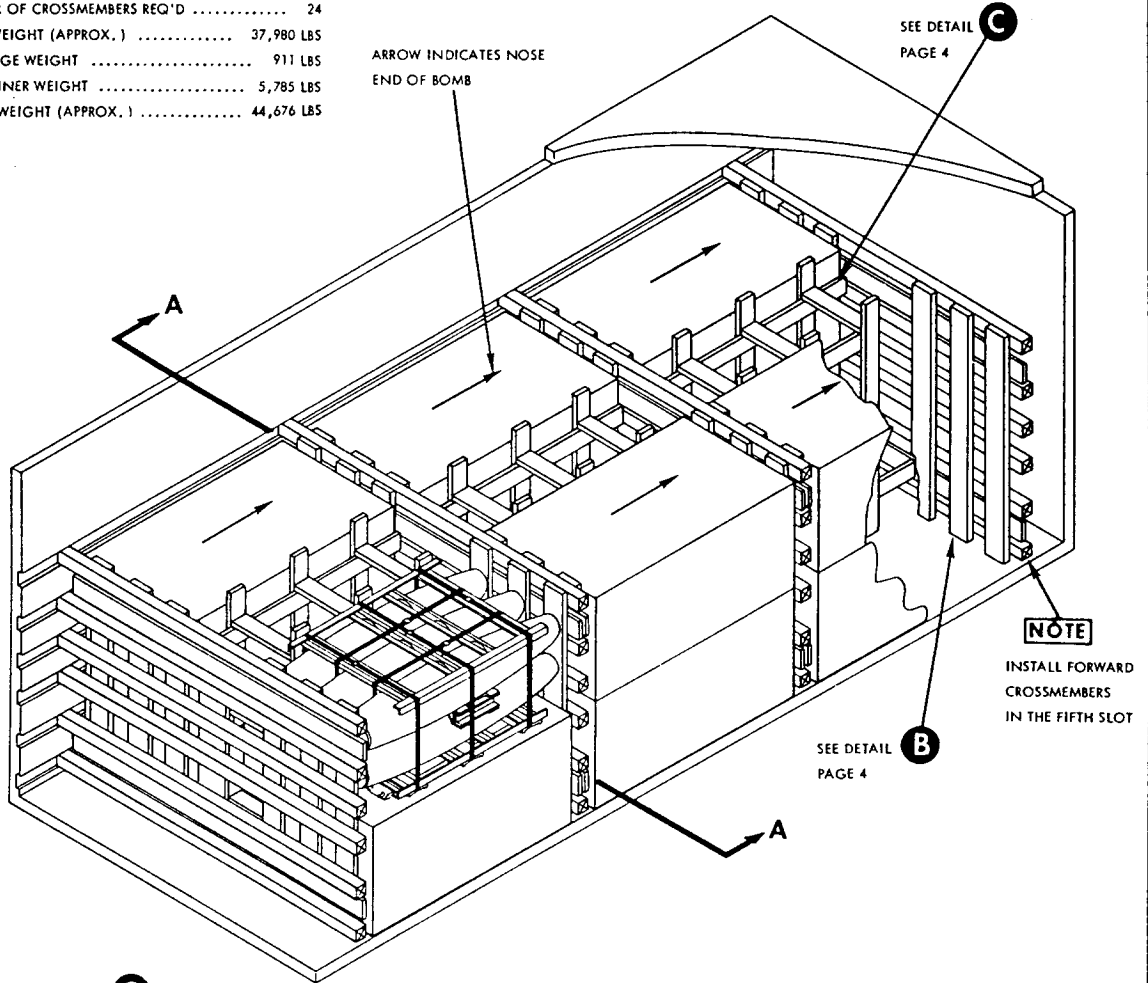
WARNING

BECAUSE THE WEIGHT LOADED INTO THIS CONTAINER EXCEEDS 34,000 LBS, THE MILVAN CHASSIS CANNOT BE USED TO TRANSPORT THE LOADED CONTAINER ON PUBLIC HIGHWAYS. THE LOADED CONTAINER MAY BE TRANSPORTED OVER DEPOT ROADS USING A MILVAN CHASSIS EQUIPPED WITH DOUBLE BOGIES OR COMMERCIAL EQUIPMENT OF APPROPRIATE CAPACITY.

3. WHEN SHIPPING THE LOADED MILVAN CONTAINER COFC, THE FLATCAR SHALL MEET THE REQUIREMENTS OF THE BUREAU OF EXPLOSIVES PAMPHLET 6C.
4. POSITION SEPARATOR GATES, DETAIL B, WITH VERTICAL MEMBERS, PIECE 1, AGAINST THE UNIT LOADS.

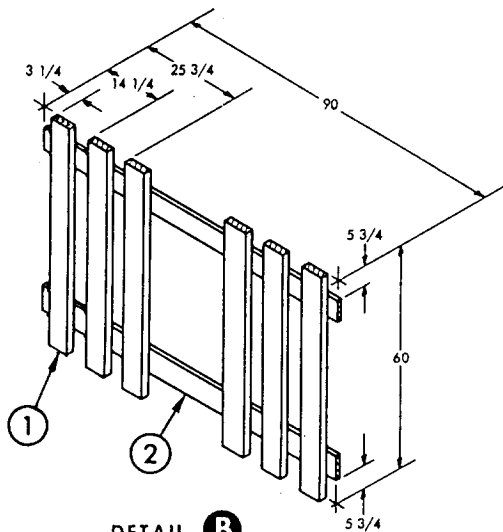
CONTAINER LOAD DATA

NUMBER OF UNIT LOADS	12
NUMBER OF CROSSMEMBERS REQ'D	24
LOAD WEIGHT (APPROX.)	37,980 LBS
DUNNAGE WEIGHT	911 LBS
CONTAINER WEIGHT	5,785 LBS
GROSS WEIGHT (APPROX.)	44,676 LBS



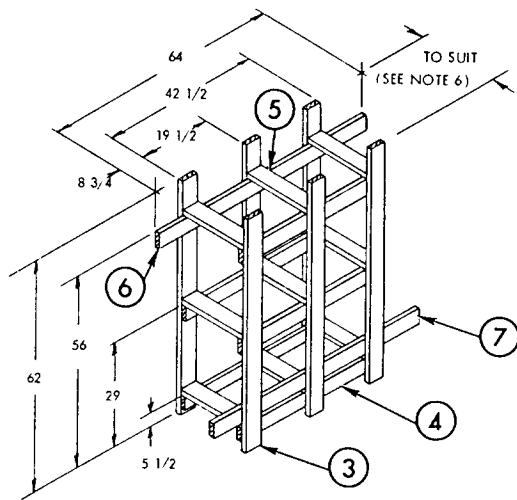
PIECE NO.	DESCRIPTION	SIZE	NO. PCS. REQ'D	NAIL TO	NUMBER	SIZE
7	BOTTOM STOP	2 X 4 X 64	3	SEE 3	-	-
6	TOP STOP & LONGITUDINAL	2 X 4 X 64	3	SEE 3	-	-
5	CLEAT	2 X 4 X TO SUIT	27	TOENAIL TO 3	2 PER JOINT	10d
4	LONGITUDINAL	2 X 4 X 42 1/2	15	SEE 3	-	-
3	UPRIGHT	2 X 4 X 62	18	4	3 PER JOINT	10d
2	HORIZONTAL	1 X 6 X 90	12	SEE 1	3 PER JOINT	10d
1	VERTICAL	2 X 6 X 60	36	2, 6 OR 7	3 PER JOINT	10d
LIST OF MATERIALS AND NAILING DATA						

SECTION A-A



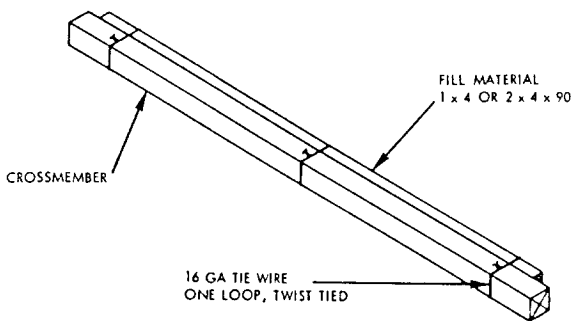
DETAIL B

SEPARATOR GATE
6 REQUIRED
(SEE COFC NOTE 4)
POSITION VERTICALS, PIECE 1,
AGAINST UNIT LOAD



DETAIL C

FILLER ASSEMBLY
3 REQUIRED
SEE GENERAL NOTE 6



DETAIL D

FILL MATERIAL
SEE GENERAL NOTE 5

REVIEW ACTIVITY:
NAVY - OS, AS

PREPARING ACTIVITY:
NAVY - OS
(PROJECT NO. 8140-N315)