

Code Ident.
10001

Naval Sea Systems Command
Department of the Navy

WR-51/124
Change Notice 4
3 September 1982

WEAPONS REQUIREMENT, TRUCKLOADING
BOMB, CLUSTER MK 20 MOD 2 (ROCKEYE II)
IN CRADLE, WEAPON MK 18 MOD 0
FLEET ISSUE UNIT LOAD

Make the following pen and ink changes:

Page 1.

Title block. Add "and CBU-78/B (GATOR)".

Distribution
WR-51

Preparing Activity:
WPNSTA Earle (NWHC)

Code Ident.
10001

WR-51/124
CHANGE NOTICE 3
23 July 1979

NAVAL SEA SYSTEMS COMMAND
DEPARTMENT OF THE NAVY

WEAPONS REQUIREMENT, TRUCKLOADING
BOMB, CLUSTER, MK 20 MOD 2, 3, & 4 (ROCKEYE II)
IN CRADLE, WEAPON MK 18 MOD 0
FLEET ISSUE UNIT LOAD

Make the following pen and ink changes:

Page 2

1. Delete Note 6 of General Notes and substitute:

"6. Chains, fittings and loadbinders shall meet the requirements of the basic truckloading document MIL-STD-1320 (NAVY) and applied as shown on page 5 and 7 of this document.

2. Delete General Note 11 and substitute:

"11. Unless otherwise specified, all material shall be as specified in the General Truckloading Document, MIL-STD-1320 (NAVY).

3. In General Note 12, delete "Weapons Requirement, WR-51" and substitute "Document, MIL-STD-1320 (NAVY)."

Page 3. In list of material, add "or 5/16" to size of Piece No. 8.

Page 5. In list of material, add "or 5/16" to size of Piece No. 7.

Page 6. In list of material, add "or 5/16" to size of Piece No. 4.

Page 8

1. Add at end of WARNING note: "Stacked loads shall be broken down to unit loads after unloading the vehicle."

Distribution
WR-51

Preparing Activity
WPNSTA Earle (NWHC)

WR-51/124
Change Notice 2
10 May 1973

NAVAL ORDNANCE SYSTEMS COMMAND
DEPARTMENT OF THE NAVY
WEAPONS REQUIREMENT, TRUCKLOADING

Bomb, Cluster MK 20 MODs 2 and 3 (Rockeye)

In Cradle, Weapon MK 18 MOD 0

Fleet Issue Unit Load

This notice forms a part of WR-51/124 dated
15 July 1970 and is mandatory for use by
establishments of the Naval Systems Command
within the Naval Material Command.

Page 1

1. In title, change "MK 20 MODs 2 & 3" to "MK 20 MODs 2, 3 & 4".

Page 2

1. In GENERAL NOTE 1, change "MK 20 MOD 2" to "MK 20 MODs 2, 3 & 4".

Distribution

WR-51 & WR-52
distribution list

Preparing Activity

U.S. NAD Earle (NWHL)

WR-51/124 -
Change Notice 1
25 September 1970

NAVAL ORDNANCE SYSTEMS COMMAND
DEPARTMENT OF THE NAVY
WEAPONS REQUIREMENT, TRUCKLOADING

Bomb, Cluster Mk 20 Mod 2 (ROCKEYE II)
in Cradle, Weapon Mk 18 Mod 0
Fleet Issue Unit Load

This notice forms a part of WR-51/124 dated 15 July 1970
and is mandatory for use by establishments of the Naval
Systems Command within the Naval Material Command.

Page 1

1. In title line "Bomb, Cluster Mk 20 Mod 2 (ROCKEYE II),"
delete "Mod 2" and substitute "Mods 2 & 3".

Distribution

WR-51 & WR-52
distribution list

Preparing Activity

U.S. NAD Earle (NWHL)

Code Ident
10001

Naval Ordnance Systems Command
Department of the Navy

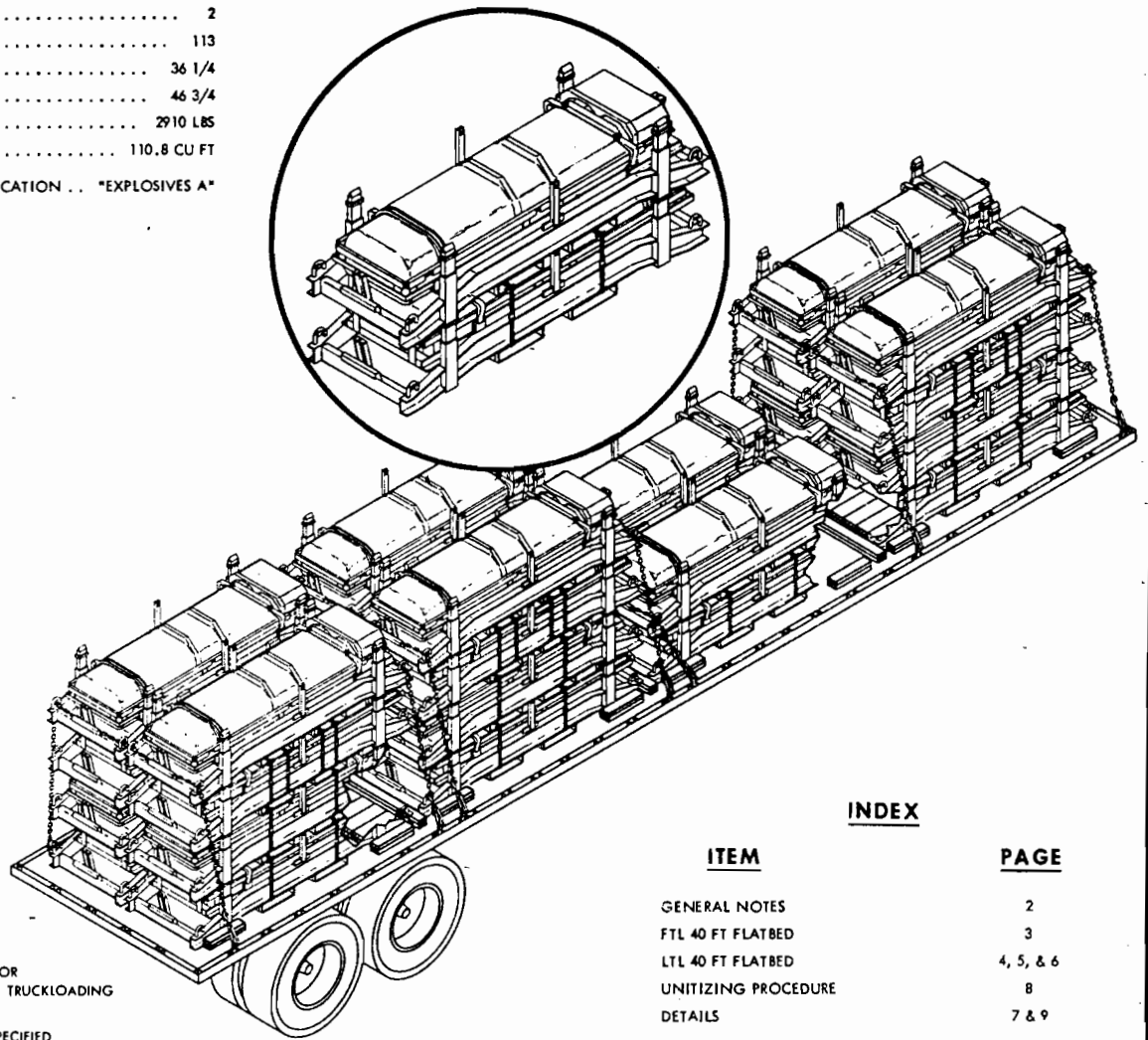
WR-51/124

15 JULY 1970

WEAPONS REQUIREMENT, TRUCKLOADING
BOMB, CLUSTER MK20 MOD 2 (ROCKEYE II)
IN CRADLE, WEAPON MK 18 MOD 0
FLEET ISSUE UNIT LOAD

UNIT LOAD DATA

NO. OF CRADLES 2
 LENGTH 113
 WIDTH 36 1/4
 HEIGHT 46 3/4
 WEIGHT 2910 LBS
 CUBE 110.8 CU FT
 DOT HAZARD CLASSIFICATION . . . "EXPLOSIVES A"



THIS WR SUPERSEDES
AND CANCELS ALL PRIOR
DRAWINGS COVERING TRUCKLOADING
OF THIS ITEM
UNLESS OTHERWISE SPECIFIED
DIMENSIONS ARE IN INCHES

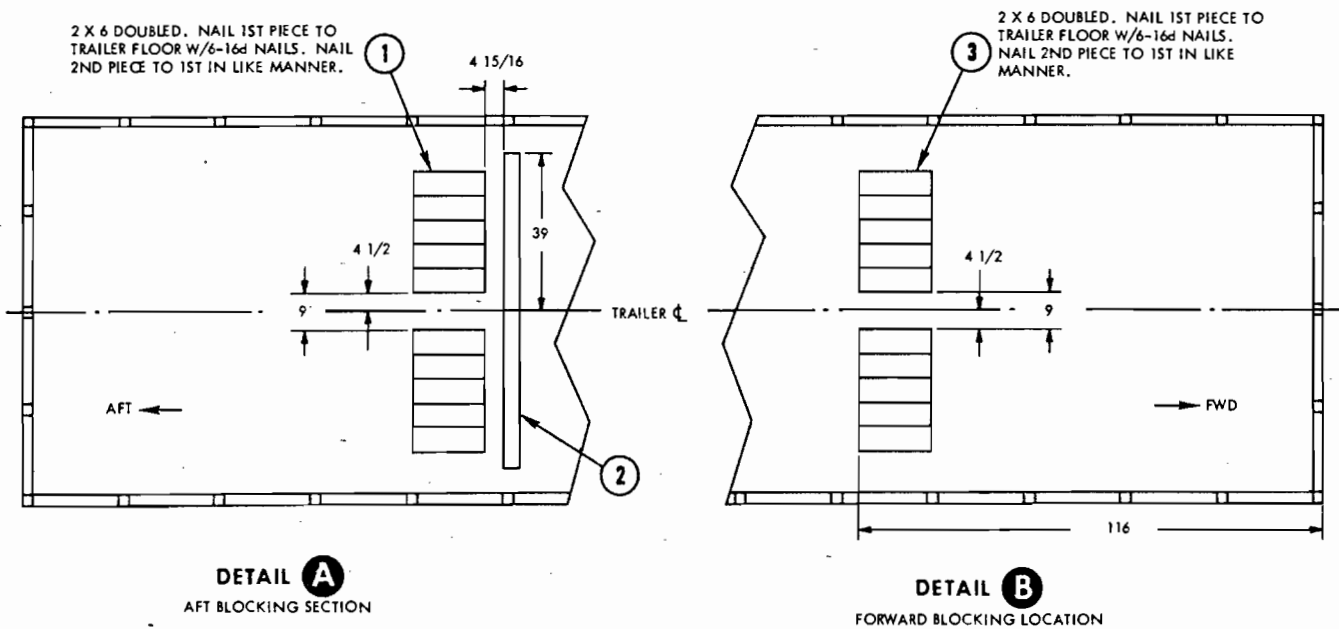
INDEX

ITEM	PAGE
GENERAL NOTES	2
FTL 40 FT FLATBED	3
LTL 40 FT FLATBED	4, 5, & 6
UNITIZING PROCEDURE	8
DETAILS	7 & 9

54/168 PALLETIZING		REV					
WR NO.	ASSOCIATED PROCESS	LTR	REVISION DESCRIPTION	DATE	TDA	SYSCOM	APPROVAL
AUTHORIZED AND RELEASED FOR HIGHWAY SHIPMENTS ONLY							
<i>J. Kelly</i> NWHL 5/8/70 SIGNATURE TECHNICAL DIRECTING ACTIVITY (TDA) DATE		ORIGINATOR <i>Charles Mc Bride</i> 5/8/70 SIGNATURE		NAVAL WEAPONS HANDLING LABORATORY U.S.N.A.D. EARLE, NEW JERSEY		PAGE 1 OF 9	
<i>E. Bettmering</i> AIR-53443 6/5/70 SIGNATURE (AIR) SYSCOM, BY DIRECTION DATE							

GENERAL NOTES

1. THIS DOCUMENT GIVES DETAILED INSTRUCTIONS FOR TRUCKLOADING THE CLUSTER BOMB MK 20 MOD 2 (ROCKEYE II) IN THE WEAPON CRADLE MK 18 MOD 0 WHEN THE CRADLES ARE UNITIZED IN ACCORDANCE WITH WR-54/168.
2. PROCEDURES AND PRACTICES DESCRIBED HEREIN ARE FOR 40 FT FLATBED TRAILERS. DO NOT USE TRAILERS WITH METAL FLOORS.
3. CRADLES MUST BE UNITIZED PRIOR TO LOADING. FOR UNITIZING PROCEDURE REFER TO PAGE 8.
4. EACH STACK OF CRADLES IS SECURED TOGETHER WITH TWO 1 1/4 X .035 CROSS STRAPS. THESE STRAPS PASS THROUGH THE FORK POCKETS OF THE TOP CRADLES AND RETURN THROUGH THE FORK POCKETS OF THE CRADLES BENEATH THE TOP CRADLES. THE STRAPS ARE SEALED WITH TWO 1 1/4 SEALS. EDGE PROTECTORS SHALL BE USED AT EACH FORK POCKET.
5. CHAIN AND LOAD BINDERS SHALL BE USED TO SECURE THE CRADLES TO THE TRAILER. THE CHAIN SHALL PASS OVER THE FRAME OF THE TOP CRADLES, THROUGH THE LIFTING EYES AND OUTSIDE OF THE END LIFT TRUCK FITTINGS (SEE DETAIL J, PAGE 7).
6. THE CHAIN AND LOAD BINDERS SHALL MEET THE FOLLOWING CONDITIONS:
 - a. CHAIN AND FITTINGS SHALL BE 3/8 INCH AND LOAD BINDERS 3/8 INCH CAPACITY.
 - b. CHAIN, FITTINGS, AND LOAD BINDER SHALL HAVE A MINIMUM BREAK LOAD OF 9,800 LBS.
 - c. LOAD BINDERS SHALL BE SAFETY WIRED WITH 16 GAUGE SOFT ANNEALED IRON WIRE OR SECURED USING THE END PIECE OF THE 3/8 CHAIN.
7. PRIOR TO LOADING THE TRAILER AND DURING THE PRELOADING INSPECTION REQUIRED BY NAVWEPS OP 2165 AND REPORTED ON DD FORM 626, THE CHAINS, FITTINGS, AND LOAD BINDERS SHALL BE INSPECTED FOR STRETCH, GOUGING, BENT LINKS, WEAR, AND ANY OTHER NOTICEABLE DEFECTS. THE INSPECTOR SHALL CONFIRM THAT THE CHAINS AND LOAD BINDERS HAVE BEEN INSPECTED AND SHALL SO NOTE IN ITEM NO. 22 OF DD FORM 626. ANY DEFICIENCY SHALL BE CAUSE FOR REJECTION OF A CHAIN OR LOAD BINDER.
8. TRAILERS SHALL BE LOADED STARTING AT THE FORWARD END AND IN THE FOLLOWING SEQUENCE.
 - a. POSITION FORWARD BLOCKING. (SEE DETAIL B.)
 - b. LOAD 1ST STACK OF CRADLES WITH FORWARD BLOCKING INSIDE CRADLE FRAME AND AGAINST CRADLE CROSS MEMBER. (SEE DETAIL K.)
 - c. NAIL CROSS MEMBER, PIECE NO. 2, IN PLACE AND LOAD 2ND STACK OF CRADLES ON TRAILER. REPEAT FOR 3RD STACK OF CRADLES.
 - d. POSITION REAR BLOCKING. (SEE DETAIL A.)
 - e. LOAD 4TH STACK OF CRADLES WITH AFT BLOCKING INSIDE CRADLE FRAME AND AGAINST CRADLE CROSS MEMBER. (SEE DETAIL L.)
9. THE MAXIMUM GROSS WEIGHT OF THE TRACTOR-TRAILER AND THE ALLOWABLE AXLE WEIGHTS ARE THE RESPONSIBILITY OF THE CARRIER. THE CARRIER WILL ADVISE THE SHIPPER OF THESE LIMITATIONS AND THE SHIPPER SHALL LOAD THE TRAILER IN SUCH A MANNER THAT THE TRACTOR-TRAILER WILL NOT EXCEED THESE LIMITATIONS.
10. AFTER BLOCKING AND BRACING HAS BEEN INSPECTED, ATTACH "EXPLOSIVES A" PLACARD TO BOTH SIDES, FRONT, AND BACK OF TRAILER.
11. APPLICABLE MATERIAL SPECIFICATIONS: DUNNAGE LUMBER, MM-L-751; NAILS FF-N-105, COMMON CEMENT COATED; STRAPPING QQ-S-781, TYPE I, CLASS A.
12. FOR GENERAL TRUCKLOADING PROCEDURES REFER TO THE GENERAL TRUCKLOADING WEAPONS REQUIREMENT, WR-51.

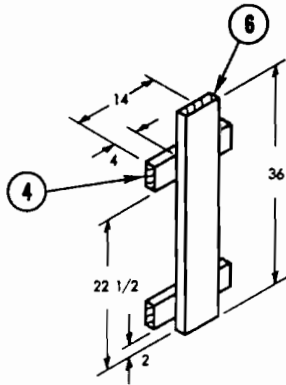


FTL 40 FT TRAILER (FLATBED)

WR-51/124

NOTE

SEE GENERAL NOTE 8 FOR LOADING SEQUENCE

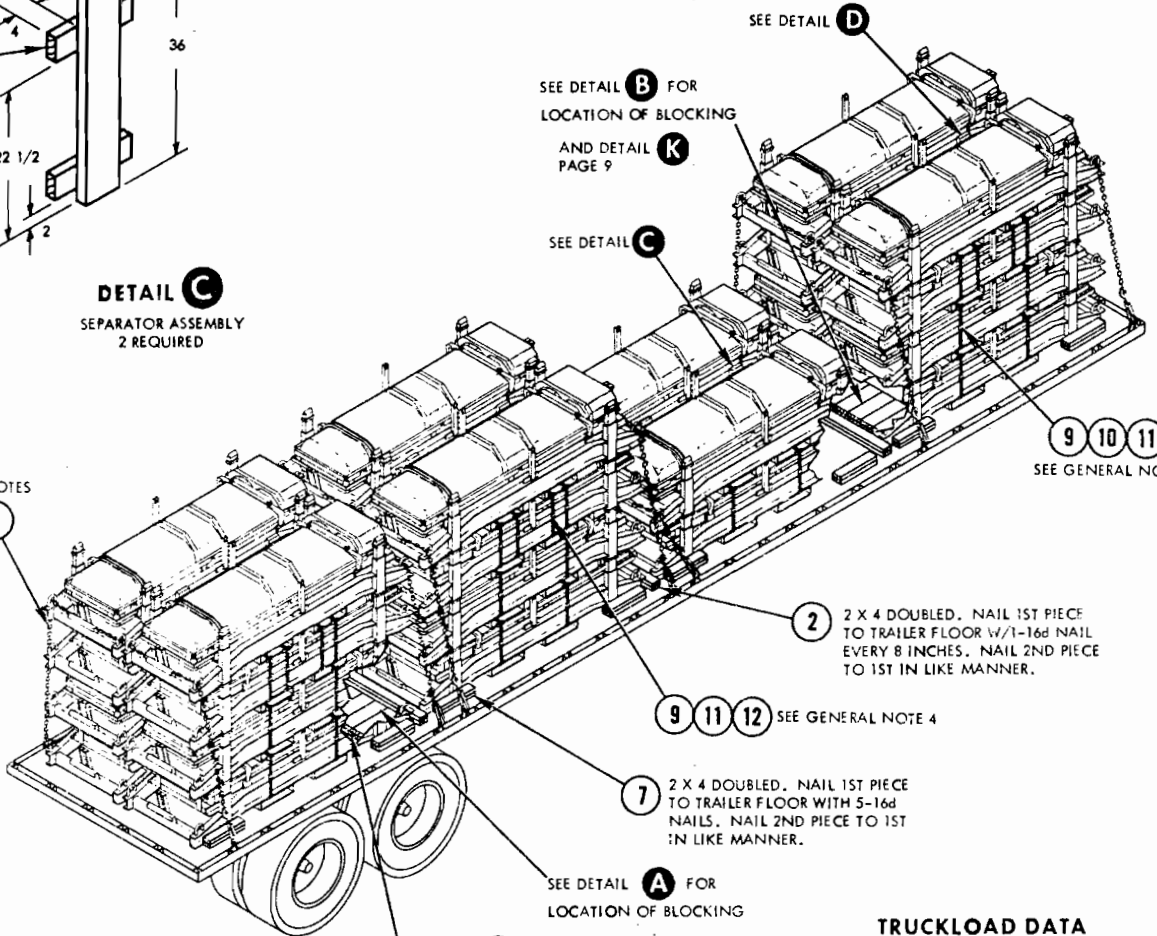


DETAIL C

SEPARATOR ASSEMBLY
2 REQUIRED

SEE GENERAL NOTES 5, 6, AND 7

8



SEE DETAIL D

SEE DETAIL B FOR LOCATION OF BLOCKING AND DETAIL PAGE 9

SEE DETAIL C

9 10 11
SEE GENERAL NOTE 3

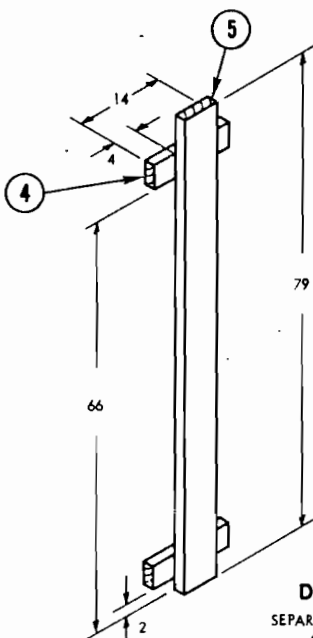
2 2 X 4 DOUBLED. NAIL 1ST PIECE TO TRAILER FLOOR W/1-16d NAIL EVERY 8 INCHES. NAIL 2ND PIECE TO 1ST IN LIKE MANNER.

9 11 12 SEE GENERAL NOTE 4

7 2 X 4 DOUBLED. NAIL 1ST PIECE TO TRAILER FLOOR WITH 5-16d NAILS. NAIL 2ND PIECE TO 1ST IN LIKE MANNER.

SEE DETAIL A FOR LOCATION OF BLOCKING

SEE DETAIL L PAGE 9



DETAIL D

SEPARATOR ASSEMBLY
6 REQUIRED

TRUCKLOAD DATA

NUMBER OF UNIT LOADS 14
NUMBER OF CRADLES 28
WEIGHT 40,740 POUNDS

12	CROSS STRAP	1 1/4 X .035 X 16 FT	6	-	-	-
11	EDGE PROTECTOR	FOR 1 1/4 STRAP	72	-	-	-
10	UNITIZING STRAP	1 1/4 X .035 X 10 FT	12	-	-	-
9	SEAL	FOR 1 1/4 STRAP	18	-	-	-
8	CHAIN & LOAD BINDER	3/8 INCH	8	SEE GENERAL NOTE 5, 6, & 7		
7	SLEEPER	2 X 4 X 18	32	SEE FIELD NOTE		
6	UPRIGHT	2 X 6 X 36	2	SEE 4	-	-
5	UPRIGHT	2 X 6 X 79	6	SEE 4	-	-
4	CROSS PIECE	2 X 4 X 14	16	5 OR 6	3/JOINT	12d.
3	FWD BLOCKING	2 X 6 X 18	20	SEE DETAIL B		
2	CROSS MEMBER	2 X 4 X 78	6	SEE FIELD NOTE		
1	AFT BLOCKING	2 X 6 X 18	20	SEE DETAIL A		
PIECE NO.	DESCRIPTION	SIZE	NO. PCS. REQD	NAIL TO	NUMBER NAILS	SIZE

LIST OF MATERIAL AND NAILING DATA

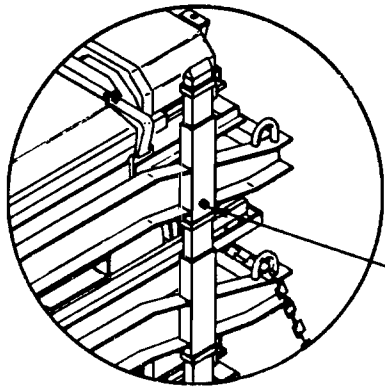
LTL 40 FT TRAILER (FLATBED)

1. WHEN REQUIRED TO SHIP LESS-THAN-TRUCKLOAD, SELECT THE CORRECT LOAD PATTERN FOR THE NUMBER OF CRADLES TO BE SHIPPED FROM TABLE I AND POSITION CRADLES ON TRAILER ACCORDINGLY.
2. WHEN THE CRADLES IN A STACK ARE HIGHER ON ONE SIDE THAN THE OTHER, THAT STACK SHOULD BE SECURED TO THE TRAILER AS SHOWN FOR AFT BAY, LTL PAGE 5.
3. WHEN REQUIRED TO STACK A SINGLE CRADLE ON TOP OF A FLEET ISSUE UNIT LOAD OF TWO CRADLES, BOLT THEM TOGETHER AS SHOWN IN DETAIL E, PAGE 5. IF A SELF-LOCKING NUT IS NOT AVAILABLE, A LOCK WASHER SHALL BE USED.
4. WHEN THE CRADLES IN A STACK ARE TWO FLEET ISSUE UNIT LOADS HIGH (4 CRADLES HIGH) THEY MUST BE UNITIZED PRIOR TO LOADING. FOR UNITIZING PROCEDURE SEE PAGE 8.
5. THE LTL PLANS SHOWN ON PAGES 5 AND 6 INDICATE THE CORRECT LESS-THAN-TRUCKLOADS FOR THE QUANTITY OF CRADLES SHOWN. THEY DO NOT LIMIT LTL SHIPMENTS TO THESE QUANTITIES SINCE LTL SHIPMENTS MAY CONSIST OF A GREATER OR LESSER NUMBER OF CRADLES.

TABLE I

NO. OF CRADLES	LOAD PATTERN* → FWD	NO. OF CRADLES	LOAD PATTERN* → FWD	NO. OF CRADLES	LOAD PATTERN* → FWD																				
27	<table border="1"><tr><td>4</td><td>4</td><td>2</td><td>4</td></tr><tr><td>4</td><td>3</td><td>2</td><td>4</td></tr></table>	4	4	2	4	4	3	2	4	18	<table border="1"><tr><td>2</td><td>3</td><td>4</td></tr><tr><td>2</td><td>3</td><td>4</td></tr></table>	2	3	4	2	3	4	9	<table border="1"><tr><td>1</td><td>2</td><td>2</td></tr><tr><td></td><td>2</td><td>2</td></tr></table>	1	2	2		2	2
4	4	2	4																						
4	3	2	4																						
2	3	4																							
2	3	4																							
1	2	2																							
	2	2																							
26	<table border="1"><tr><td>4</td><td>3</td><td>2</td><td>4</td></tr><tr><td>4</td><td>3</td><td>2</td><td>4</td></tr></table>	4	3	2	4	4	3	2	4	17	<table border="1"><tr><td>2</td><td>3</td><td>4</td></tr><tr><td>2</td><td>2</td><td>4</td></tr></table>	2	3	4	2	2	4	8	<table border="1"><tr><td>2</td><td>2</td></tr><tr><td>2</td><td>2</td></tr></table>	2	2	2	2		
4	3	2	4																						
4	3	2	4																						
2	3	4																							
2	2	4																							
2	2																								
2	2																								
25	<table border="1"><tr><td>4</td><td>3</td><td>2</td><td>4</td></tr><tr><td>4</td><td>2</td><td>2</td><td>4</td></tr></table>	4	3	2	4	4	2	2	4	16	<table border="1"><tr><td>2</td><td>2</td><td>4</td></tr><tr><td>2</td><td>2</td><td>4</td></tr></table>	2	2	4	2	2	4	7	<table border="1"><tr><td>1</td><td>2</td><td>2</td></tr><tr><td></td><td></td><td>2</td></tr></table>	1	2	2			2
4	3	2	4																						
4	2	2	4																						
2	2	4																							
2	2	4																							
1	2	2																							
		2																							
24	<table border="1"><tr><td>4</td><td>4</td><td>4</td></tr><tr><td>4</td><td>4</td><td>4</td></tr></table>	4	4	4	4	4	4	15	<table border="1"><tr><td>2</td><td>2</td><td>4</td></tr><tr><td>2</td><td>2</td><td>3</td></tr></table>	2	2	4	2	2	3	6	<table border="1"><tr><td>2</td><td>2</td></tr><tr><td></td><td>2</td></tr></table>	2	2		2				
4	4	4																							
4	4	4																							
2	2	4																							
2	2	3																							
2	2																								
	2																								
23	<table border="1"><tr><td>4</td><td>4</td><td>4</td></tr><tr><td>3</td><td>4</td><td>4</td></tr></table>	4	4	4	3	4	4	14	<table border="1"><tr><td>2</td><td>2</td><td>3</td></tr><tr><td>2</td><td>2</td><td>3</td></tr></table>	2	2	3	2	2	3	5	<table border="1"><tr><td>1</td><td>2</td><td>2</td></tr><tr><td></td><td></td><td>2</td></tr></table>	1	2	2			2		
4	4	4																							
3	4	4																							
2	2	3																							
2	2	3																							
1	2	2																							
		2																							
22	<table border="1"><tr><td>3</td><td>4</td><td>4</td></tr><tr><td>3</td><td>4</td><td>4</td></tr></table>	3	4	4	3	4	4	13	<table border="1"><tr><td>2</td><td>2</td><td>3</td></tr><tr><td>2</td><td>2</td><td>2</td></tr></table>	2	2	3	2	2	2	4	<table border="1"><tr><td>2</td></tr><tr><td>2</td></tr></table>	2	2						
3	4	4																							
3	4	4																							
2	2	3																							
2	2	2																							
2																									
2																									
21	<table border="1"><tr><td>3</td><td>4</td><td>4</td></tr><tr><td>2</td><td>4</td><td>4</td></tr></table>	3	4	4	2	4	4	12	<table border="1"><tr><td>2</td><td>2</td><td>2</td></tr><tr><td>2</td><td>2</td><td>2</td></tr></table>	2	2	2	2	2	2	3	<table border="1"><tr><td>1</td><td>2</td></tr></table>	1	2						
3	4	4																							
2	4	4																							
2	2	2																							
2	2	2																							
1	2																								
20	<table border="1"><tr><td>2</td><td>4</td><td>4</td></tr><tr><td>2</td><td>4</td><td>4</td></tr></table>	2	4	4	2	4	4	11	<table border="1"><tr><td>2</td><td>2</td><td>3</td></tr><tr><td></td><td>2</td><td>2</td></tr></table>	2	2	3		2	2	2	<table border="1"><tr><td>2</td></tr></table>	2							
2	4	4																							
2	4	4																							
2	2	3																							
	2	2																							
2																									
19	<table border="1"><tr><td>2</td><td>4</td><td>4</td></tr><tr><td>2</td><td>3</td><td>4</td></tr></table>	2	4	4	2	3	4	10	<table border="1"><tr><td>2</td><td>2</td><td>2</td></tr><tr><td></td><td>2</td><td>2</td></tr></table>	2	2	2		2	2	1	<table border="1"><tr><td>1</td></tr></table>	1							
2	4	4																							
2	3	4																							
2	2	2																							
	2	2																							
1																									

* LOAD PATTERN SHOWS TRAILER FLOOR PLAN. NUMBER IN SMALL BLOCKS INDICATES NUMBER OF CRADLES IN LAYER.



12 13
4 PLACES
SEE NOTE 3 PAGE 4

SEE DETAIL G

DETAIL E

SEE DETAIL E

SEE GENERAL NOTES
5, 6, & 7, PAGE 2
AND DETAIL J
PAGE 7

7

9 10 11
SEE GENERAL NOTE 3
PAGE 2

8 9 11

2 2 X 4 DOUBLED. NAIL 1ST PIECE TO
TRAILER FLOOR W/1-16d NAIL EVERY
8 INCHES. NAIL 2ND PIECE TO 1ST
IN LIKE MANNER.

3 2 X 4 DOUBLED. NAIL 1ST PIECE TO
TRAILER FLOOR W/5-16d NAILS. NAIL
2ND PIECE TO 1ST IN LIKE MANNER.

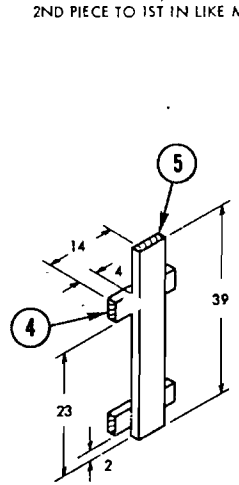
SEE DETAIL F

1

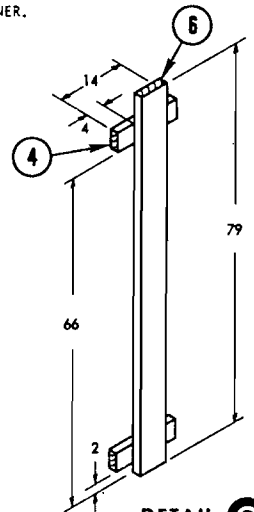
2 X 6 DOUBLED. NAIL 1ST PIECE TO
TRAILER FLOOR W/6-16d NAILS. NAIL
2ND PIECE TO 1ST IN LIKE MANNER.

TRUCKLOAD DATA

NUMBER OF UNIT LOADS 10 + 1 CRADLE
NUMBER OF CRADLES 21
WEIGHT 30,555 LBS



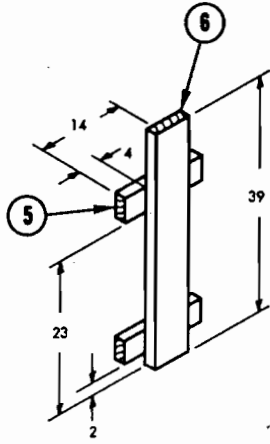
DETAIL F
SEPARATOR ASSEMBLY
2 REQUIRED



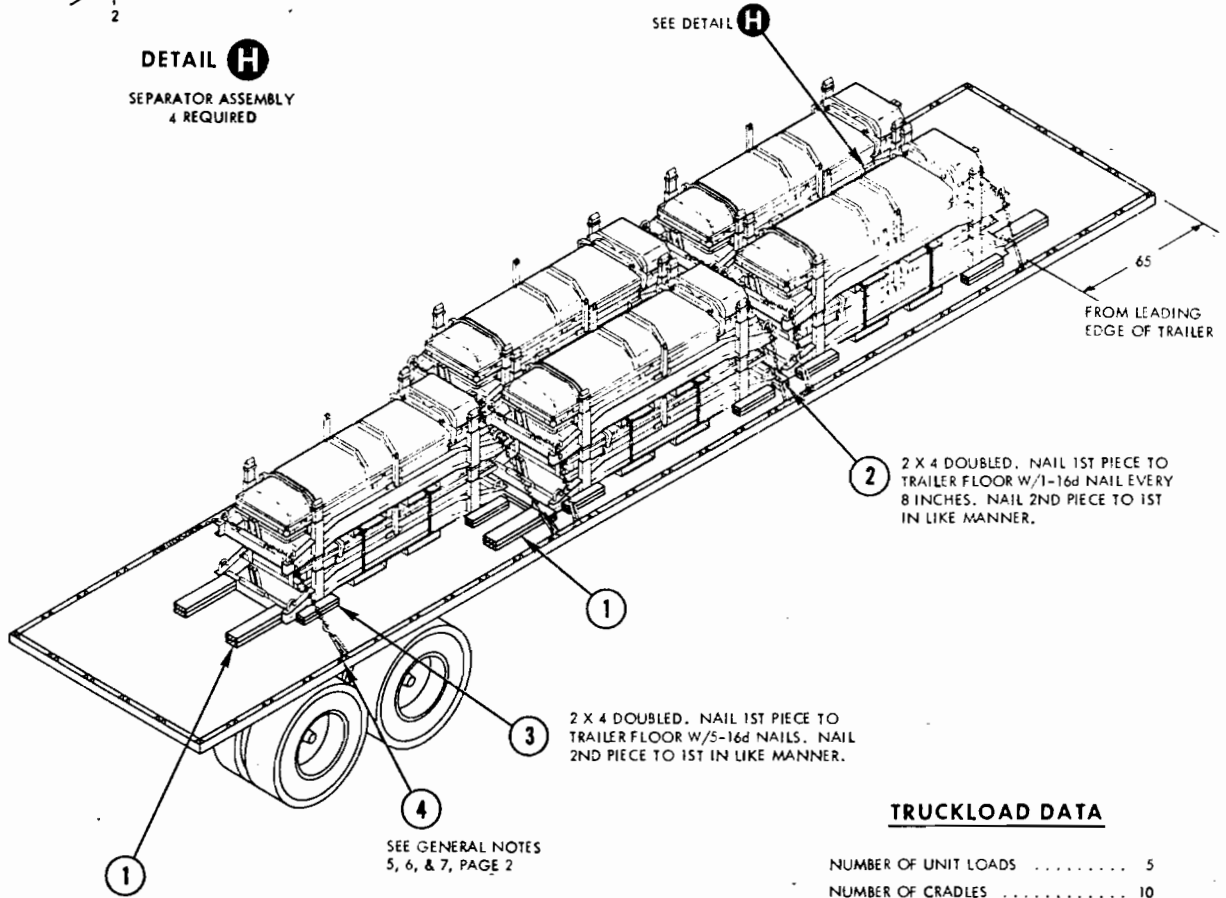
DETAIL G
SEPARATOR ASSEMBLY
4 REQUIRED

13	SELF LOCKING NUT	7/16 - 14 UNC	4	-	-	-
12	BOLT	7/16 - 14 UNC X 2 1/2	4	-	-	-
11	EDGE PROTECTOR	FOR 1 1/4 STRAP	48	-	-	-
10	UNITIZING STRAP	1 1/4 X .035 X 10 FT	8	-	-	-
9	SEAL	FOR 1 1/4 STRAP	12	-	-	-
8	CROSS STRAP	1 1/4 X .035 X 16 FT	4	-	-	-
7	CHAIN & LOAD BINDER	3/8 INCH	6	-	-	-
6	UPRIGHT	2 X 6 X 79	4	SEE 4	-	-
5	UPRIGHT	2 X 6 X 39	2	SEE 4	-	-
4	CROSS PIECE	2 X 4 X 14	12	5 OR 6	3/JOINT	10d
3	SLEEPER	2 X 4 X 18	24	SEE FIELD NOTE		
2	CROSS MEMBER	2 X 4 X 78	4	SEE FIELD NOTE		
1	BACKUP CLEAT	2 X 6 X 24	16	SEE FIELD NOTE		
PIECE NO.	DESCRIPTION	SIZE	NO. PCS. REQD	NAIL TO	NUMBER NAILS	SIZE
LIST OF MATERIAL AND NAILING DATA						

LTL 40 FT TRAILER (FLATBED)



DETAIL H
SEPARATOR ASSEMBLY
4 REQUIRED



1 2 X 6 DOUBLED. NAIL 1ST PIECE TO TRAILER FLOOR W/6-16d NAILS. NAIL 2ND PIECE TO 1ST IN LIKE MANNER.

4 SEE GENERAL NOTES 5, 6, & 7, PAGE 2

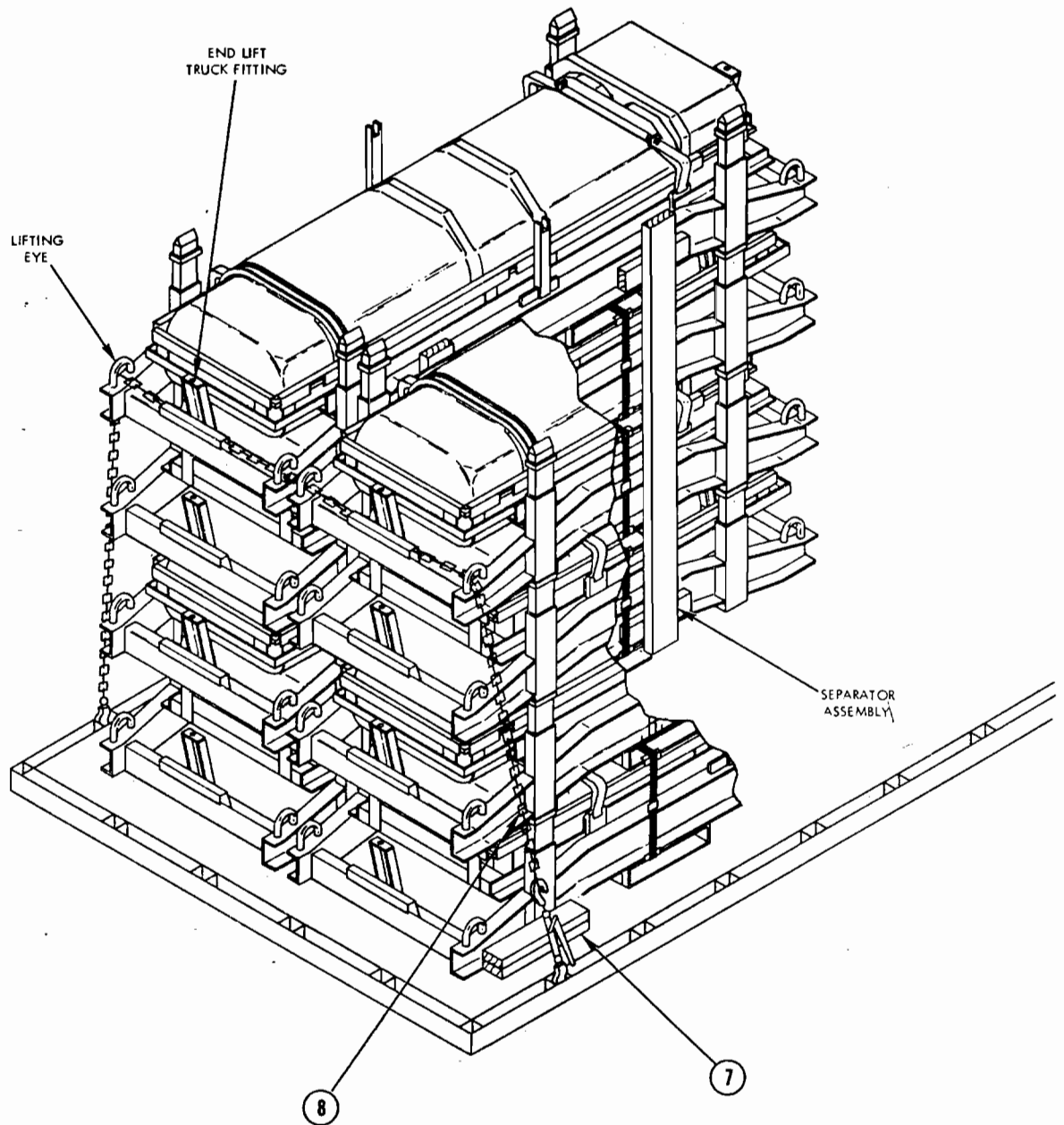
3 2 X 4 DOUBLED. NAIL 1ST PIECE TO TRAILER FLOOR W/5-16d NAILS. NAIL 2ND PIECE TO 1ST IN LIKE MANNER.

2 2 X 4 DOUBLED. NAIL 1ST PIECE TO TRAILER FLOOR W/1-16d NAIL EVERY 8 INCHES. NAIL 2ND PIECE TO 1ST IN LIKE MANNER.

TRUCKLOAD DATA

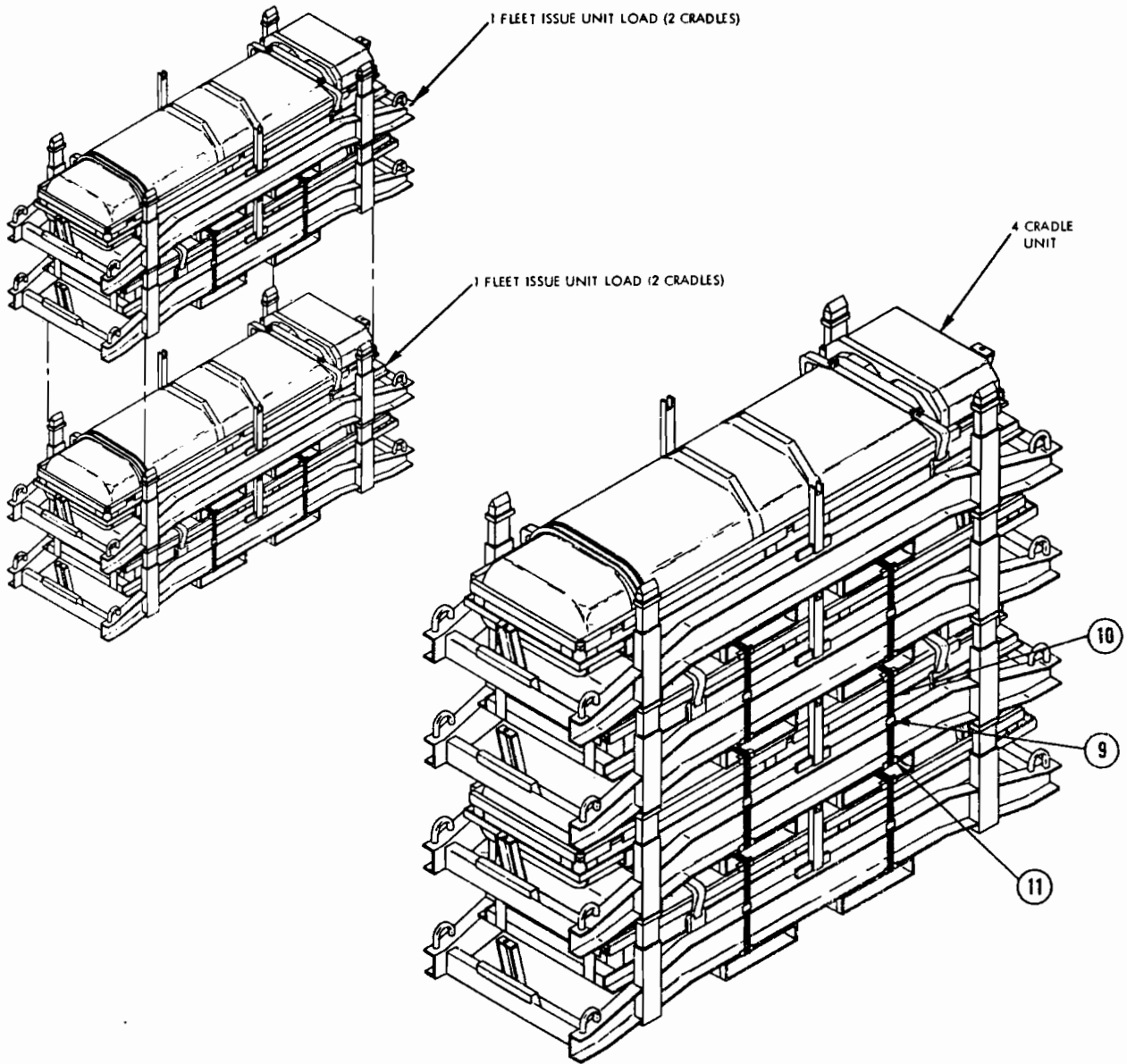
NUMBER OF UNIT LOADS 5
NUMBER OF CRADLES 10
WEIGHT 14,550 LBS

6	UPRIGHT	2 X 6 X 39	4	SEE 5	-	-
5	CROSS PIECE	2 X 4 X 14	8	6	3/JOINT	10d
4	CHAIN & LOAD BINDER	3/8 INCH	6	-	-	-
3	SLEEPER	2 X 4 X 20	24	SEE FIELD NOTE		
2	SEPARATOR	2 X 4 X 76	4	SEE FIELD NOTE		
1	BACKUP CLEAT	2 X 6 X 24	16	SEE FIELD NOTE		
PIECE NO.	DESCRIPTION	SIZE	NO. PCS. RFQD	NAIL TO	NUMBER	SIZE
LIST OF MATERIAL AND NAILING DATA						



DETAIL J

UNITIZING DETAIL



UNITIZING PROCEDURE

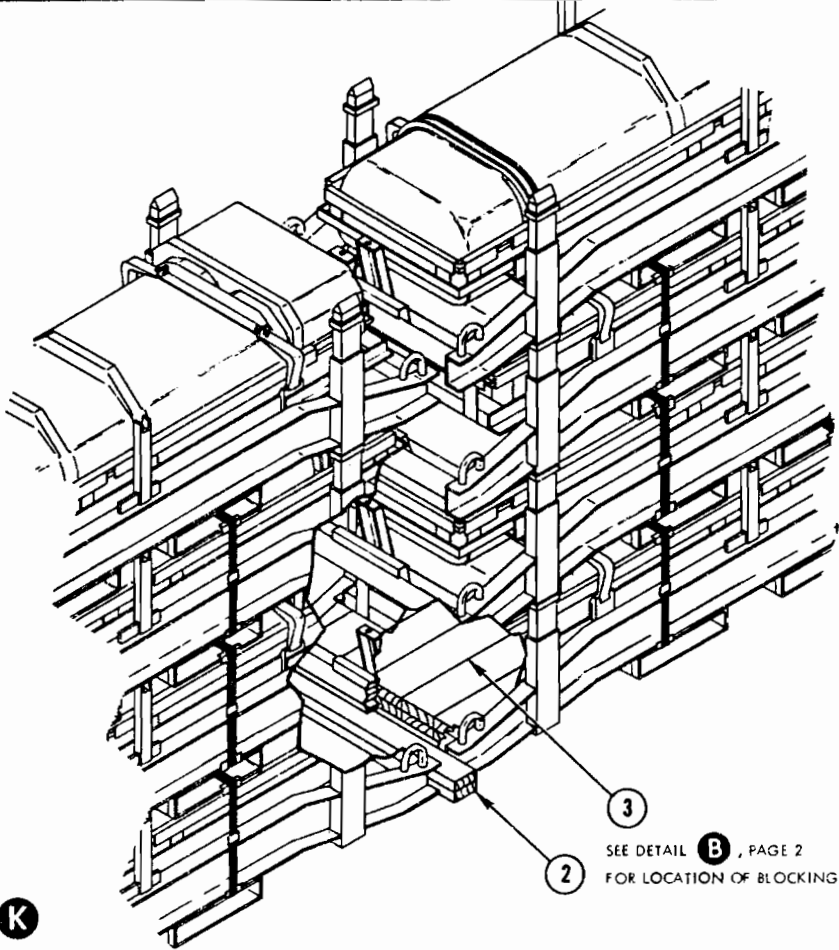
1. USING A FORK LIFT TRUCK, STACK TWO FLEET ISSUE UNIT LOADS TOGETHER FORMING A UNIT OF CRADLES FOUR (4) HIGH.
2. SECURE LOWER UNIT LOAD TO TOP UNIT LOAD WITH TWO 1 1/4 X .035 STEEL STRAPS (PIECE NO. 10) POSITIONED AS SHOWN ABOVE. THREAD STRAP THROUGH FORK POCKETS OF THE TOP CRADLE OF THE LOWER UNIT LOAD AND THROUGH THE FORK POCKETS OF THE BOTTOM CRADLE OF THE TOP UNIT LOAD. LOCATE EDGE PROTECTORS (PIECE NO. 11) UNDER STRAPS AS SHOWN. TENSION STRAPS, AND SEAL WITH ONE SEAL (PIECE NO. 9).

CAUTION

TENSION STRAPS SUFFICIENT TO INSURE INTEGRITY OF STACK. DO NOT OVER TENSION.

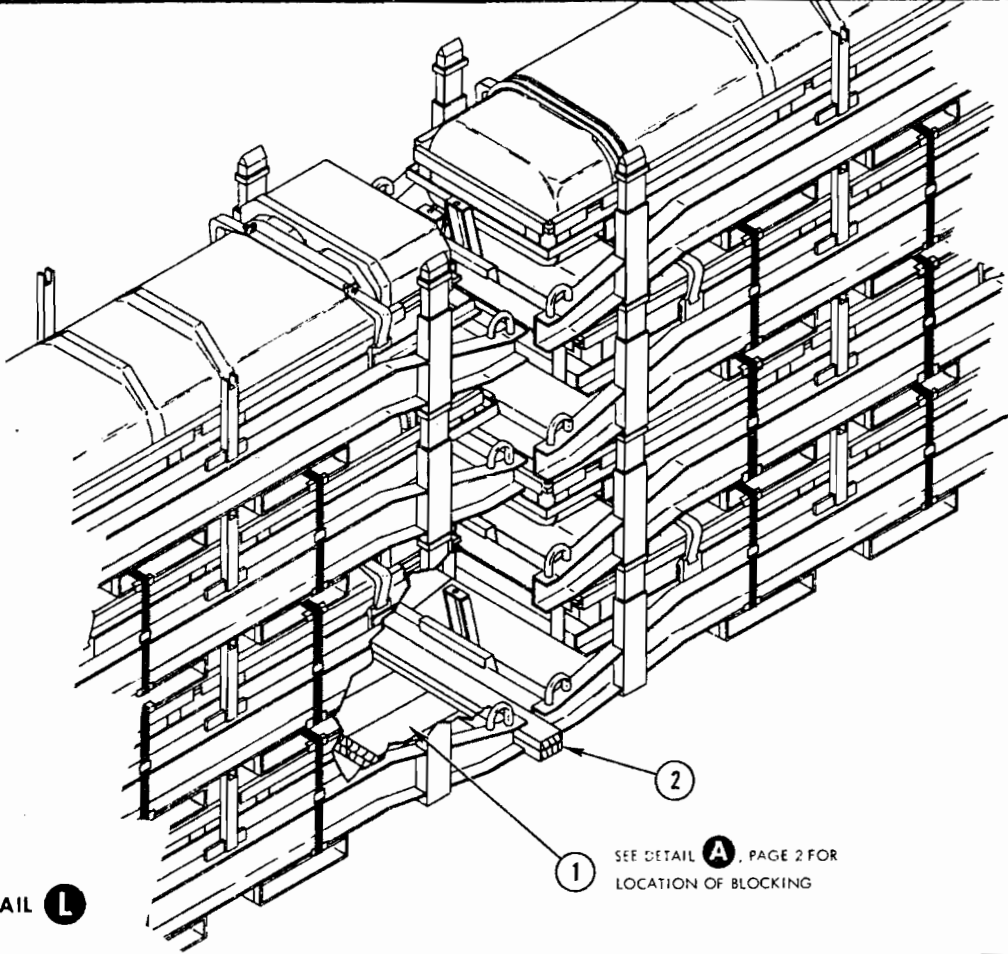
WARNING

THE STRAPPING TOGETHER OF UNIT LOADS TO FORM A UNIT OF CRADLES FOUR HIGH IS AUTHORIZED FOR LOADING AND UNLOADING OF TRAILERS. ANY MOVEMENT OF FOUR HIGH CRADLES SHALL BE LIMITED TO THAT NECESSARY TO LOAD OR UNLOAD THE TRAILER.



DETAIL **K**

SEE DETAIL **B**, PAGE 2
FOR LOCATION OF BLOCKING



DETAIL **L**

SEE DETAIL **A**, PAGE 2 FOR
LOCATION OF BLOCKING