

Military Standard
Truckloading

HARPOON Thickwall Canister
Loaded With Guided Missile RGM-84A-5
In Shipping And Storage Container MK 694 Mod 0

To All Holders of MIL-STD-1320-226 (NAVY)

Page 2. General Notes. Add the following instruction as Note 1a:

"MK 694 containers with empty thickwall canisters may be shipped two high. Using a 6,000 lb capacity forklift, stack the upper containers on the lower ones making sure the stacking features are engaged. Add an additional chain and loadbinder to the center of each stack for a total of four tiedowns. To minimize lateral swaying, nail a piece of 2 x 6 to the bottom of each of the protector board assemblies. This piece should fit loosely in between the two upper container covers."

AMSC No. - N/A

DISTRIBUTION STATEMENT A
Approved for public release;
distribution is unlimited.

Review Activities:
NAVY - OS

Preparing Activity
NAVY - OS
(Project No. 8140-N768)
FSC 8140

MILITARY STANDARD TRUCKLOADING

MIL-STD-1320-226
(NAVY)

9 APRIL 1986

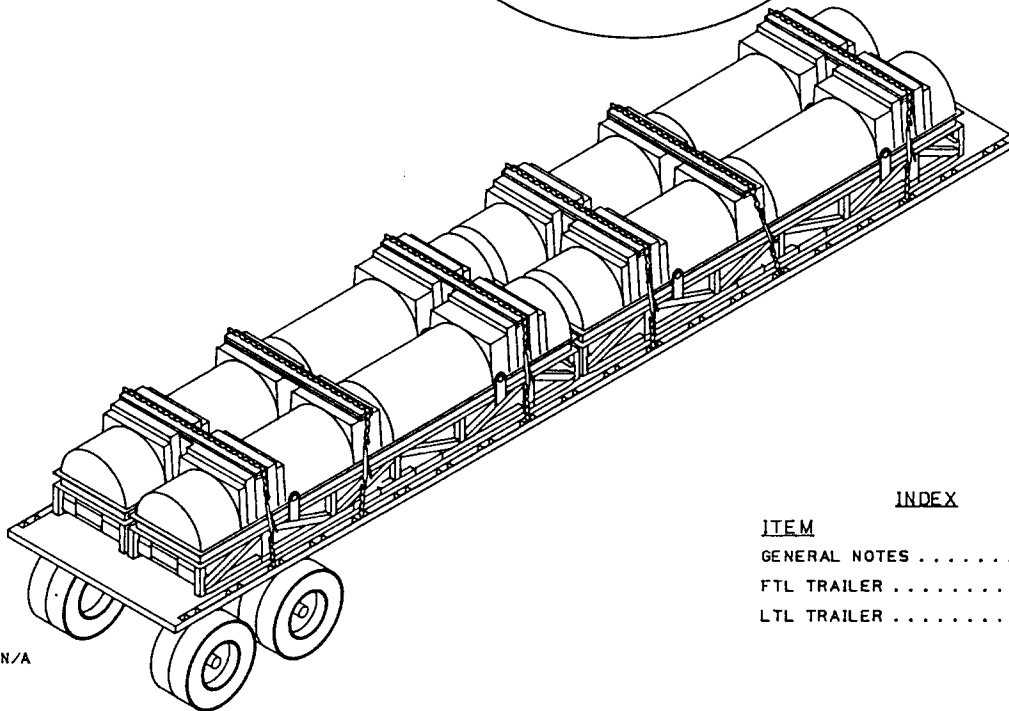
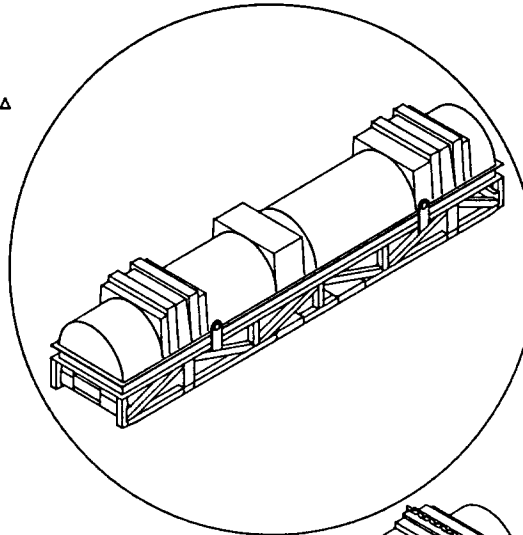
HARPOON THICKWALL CANISTER
LOADED WITH GUIDED MISSILE RGM-84A-6
IN SHIPPING AND STORAGE CONTAINER MK694 MOD 0

CONTAINER DATA

CANISTERS PER CONTAINER 1
DIMENSIONS 217 L X 41 W X 42.5 H
GROSS WT 5760 LBS Δ
TARE WT 1280 LBS
CUBE 219.2 CU FT
Δ DO NOT USE FOR SHIPPING WT.

DOT HAZARD CLASSIFICATION

WITH MISSILE IN CANISTER - EXPLOSIVES A
WITH EMPTY CANISTER - INERT
EMPTY CONTAINER - INERT



INDEX

ITEM	PAGE
GENERAL NOTES	2
FTL TRAILER	2 & 3
LTL TRAILER	4

AMSC NO. - N/A

NOTES:

- UNLESS OTHERWISE SPECIFIED DIMENSIONS ARE IN INCHES.
- FOR CROSS REFERENCE TO ASSOCIATED PALLETIZING, CONTAINERLOADING AND CARLOADING MILITARY STANDARDS, REFER TO INDEX TO STANDARDS, MIL-HDBK-236 (NAVY).

DISTRIBUTION STATEMENT A

Approved for public release;
distribution is unlimited.

FSC 8140

**AUTHORIZED AND RELEASED
FOR HIGHWAY SHIPMENT ONLY**

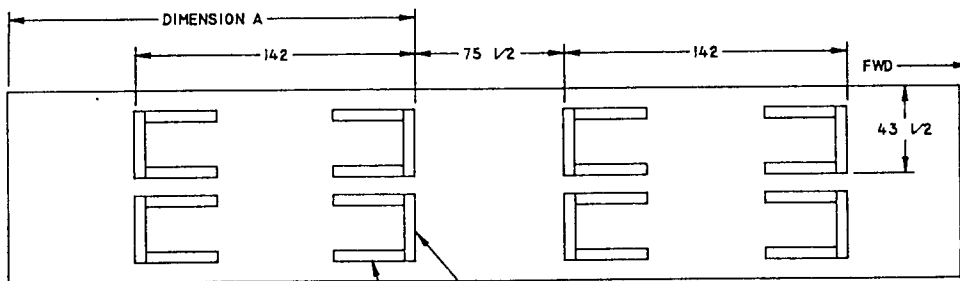
M.S. Gray NWHC 4/8/86
SIGNATURE TECHNICAL DIRECTION AGENT (TDA) DATE
E. Holm 4/9/86
SIGNATURE SEXSYSZOM BY DIRECTION DATE

ORIGINATOR *J Bender* 4/9/86
NAVAL WEAPONS HANDLING CENTER
WPNSTA EARLE, NEW JERSEY
PAGE 1 OF 4

GENERAL NOTES

1. THIS DOCUMENT GIVES DETAILED INSTRUCTIONS FOR TRUCKLOADING THE HARPOON THICKWALL CANISTER LOADED WITH GUIDED MISSILE RGM-84A-5 IN SHIPPING AND STORAGE CONTAINER MK 694 MOD 0. FOR GENERAL TRUCKLOADING PROCEDURES REFER TO THE GENERAL TRUCKLOADING DOCUMENT, MIL-STD-1320 (NAVY).
2. THE PROCEDURES DESCRIBED HEREIN ARE INTENDED FOR 40 FT AND LONGER FLATBED TRAILERS WITH THE TRAILERS TANDEM AXLES LOCATED IN THE 'WESTERN POSITION' (AT THE EXTREME REAR OF THE TRAILER). DO NOT USE TRAILERS WITH METAL FLOORS.
3. CHAINS AND STEEL STRAPPING MAY BE USED INTERCHANGEABLY ON A ONE TO ONE BASIS FOR TIE DOWNS.
4. STEEL STRAPPING USED AS TIE DOWNS SHALL BE 2 X .050 AND SHALL CONFORM TO AND BE APPLIED AS SPECIFIED IN THE GENERAL TRUCKLOADING DOCUMENT, MIL-STD-1320 (NAVY).
5. CHAINS, FITTINGS AND LOAD BINDERS SHALL CONFORM TO AND BE APPLIED AS SPECIFIED IN THE GENERAL TRUCKLOADING DOCUMENT, MIL-STD-1320 (NAVY) EXCEPT THAT THE CHAIN/GRAB HOOKS SHALL BE ATTACHED TO THE STAKE POCKETS (NOT AROUND THE RUB RAIL).
6. PROTECTOR BOARDS (DOUBLED 2 X 6'S) SHALL BE USED UNDER THE TIE DOWNS. WHEN USING STEEL STRAPPING, THE STRAPS SHALL BE STAPLED TO THE PROTECTOR BOARD USING 2 INCH STRAPPING STAPLES. WHEN USING CHAIN, THE CHAINS SHALL BE SECURED TO THE PROTECTOR BOARD BY DRIVING A 10 d NAIL THROUGH THE CHAIN LINK AND CLINCHING THE NAIL OVER THE CHAIN. FIVE STAPLES/NAILS SHALL BE USED FOR EACH TIE DOWN.
7. PRIOR TO LOADING THE TRAILER AND DURING PRELOADING INSPECTION, REQUIRED BY NAVSEA OP 2165 AND REPORTED ON DD FORM 626, THE CHAINS, FITTINGS AND LOAD BINDERS SHALL BE INSPECTED FOR STRETCH, GOUGING, BENT LINKS, WEAR AND ANY OTHER NOTICABLE DEFECTS. THE INSPECTOR SHALL CONFIRM THAT THE CHAINS, FITTINGS AND LOAD BINDERS HAVE BEEN INSPECTED AND SHALL SO NOTE IN ITEM NO. 22 OF DD FORM 626. ANY DEFICIENCY SHALL BE CAUSE FOR REJECTION OF A CHAIN OR LOAD BINDER.
8. UNLESS OTHERWISE SPECIFIED DUNNAGE LUMBER, STEEL STRAPPING, STRAP SEALS AND NAILS SHALL BE AS SPECIFIED IN THE GENERAL TRUCKLOADING DOCUMENT, MIL-STD-1320 (NAVY).
9. THE MAXIMUM GROSS WEIGHT OF THE TRACTOR-TRAILER AND THE ALLOWABLE AXLE WEIGHTS ARE THE RESPONSIBILITY OF THE CARRIER. THE CARRIER WILL ADVISE THE SHIPPER OF THESE LIMITATIONS AND THE SHIPPER SHALL LOAD THE TRAILER IN SUCH A MANNER THAT THE TRACTOR-TRAILER WILL NOT EXCEED THESE LIMITATIONS.
10. AFTER THE BLOCKING, BRACING AND TIE DOWNS HAVE BEEN INSPECTED, THE CONTAINERS SHALL BE COMPLETELY COVERED WITH FIRE RESISTANT WATERPROOF TARPULINS.
11. AFTER THE TARPULINS ARE IN PLACE, ATTACH 'EXPLOSIVES A' PLACARDS TO BOTH SIDES, FRONT AND BACK OF THE TRAILER (WITH MISSILE ONLY) AND ATTACH THE SHIPPING DOCUMENTS TO AN ACCESSABLE AREA ON THE BACK DECK OF THE TRAILER.

FTL 40 FT AND LONGER TRAILER (FLATBED)



TRAILER LENGTH	DIMENSION A
40 FT	206 INCHES
42 FT	218 INCHES
44 FT	230 INCHES
45 FT	236 INCHES

① 2 X 6 DOUBLED. NAIL 1ST PIECE TO TRAILER FLOOR W/5-16d NAILS. NAIL 2ND PIECE TO 1ST IN LIKE MANNER.

② 2 X 6 DOUBLED. NAIL 1ST PIECE TO TRAILER FLOOR W/6-16d NAILS. NAIL 2ND PIECE TO 1ST IN LIKE MANNER.

DETAIL A

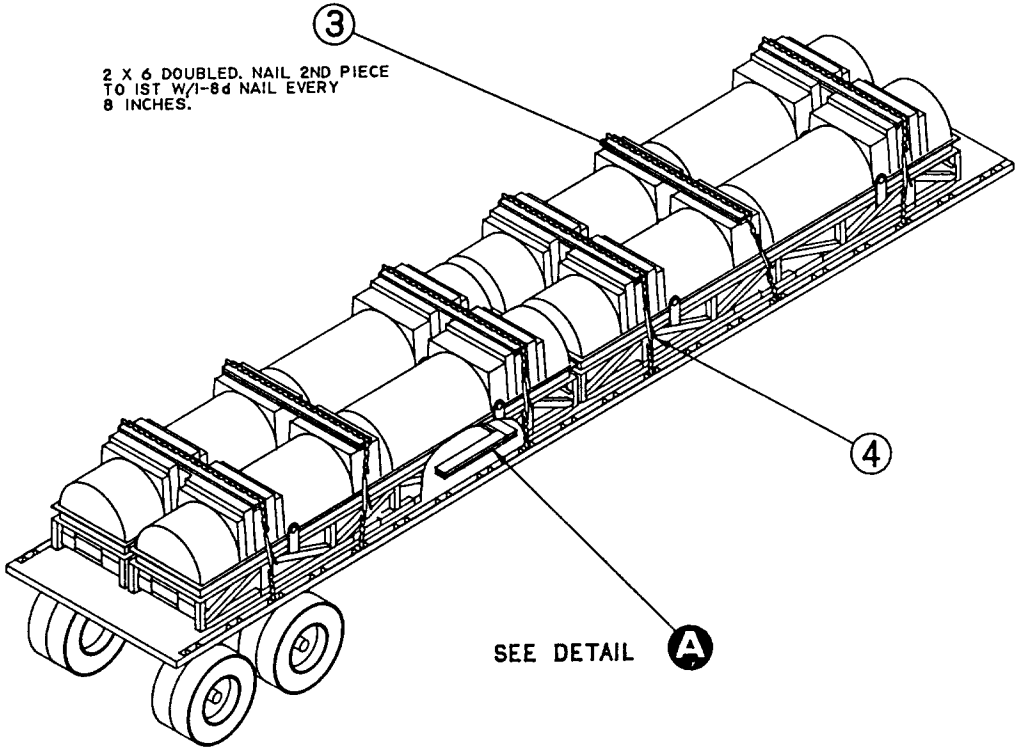
PREPOSITIONED FLOOR BLOCKING FOR 40 FT OR LONGER TRAILER

NOTE

TARPAULINS OVER
CONTAINERS OMITTED
FOR CLARITY.

NOTE

DIRECTION OF ARROW
INDICATES FORWARD
END OF CONTAINER



TRUCKLOAD DATA

NUMBER OF CONTAINERS 4
WEIGHT 23040 LBS Δ

Δ DO NOT USE FOR SHIPPING WEIGHT

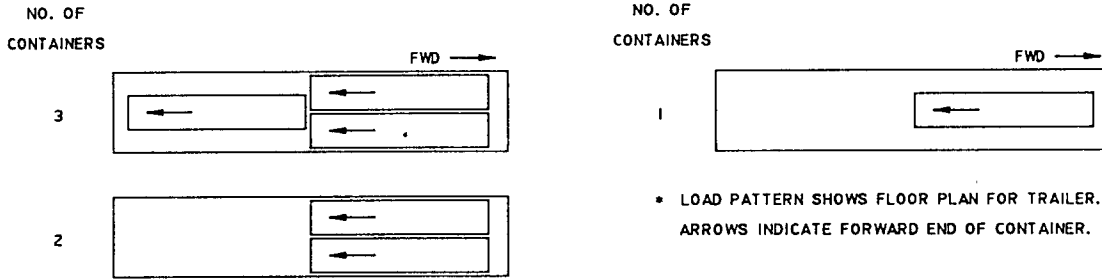
6	4	CHAIN AND LOAD BINDER	SEE NOTE 5	5/16 OR 3/8
12	3	PROTECTOR BOARD	SEE NOTE 6	2 X 6 X 78
32	2	PREPOSITIONED BACKUP CLEAT	SEE NOTE 8	2 X 6 X 36
16	1	PREPOSITIONED CROSSMEMBER	SEE NOTE 8	2 X 6 X 33 1/2
REQ'D	ITEM	DESCRIPTION	MAT'L/DWG	DIMENSIONS
LIST OF MATERIALS				

MIL-STD-1320-226 (NAVY)

LTL 40 FT AND LONGER TRAILER (FLATBED)

1. WHEN REQUIRED TO SHIP LESS-THAN-TRUCKLOAD, SELECT THE CORRECT LOAD PATTERN FOR THE NUMBER OF CONTAINERS TO BE SHIPPED FROM TABLE I.
2. POSITION CONTAINERS ON TRAILER AS SHOWN IN TABLE I. BLOCK AND TIE DOWN USING THE PRINCIPLES SHOWN ON PAGES 3 AND 4 AND THE GENERAL DOCUMENT, MIL-STD-1320 (NAVY).
3. THE LTL PLAN SHOWN ON PAGE 4 IS THE LESS-THAN-TRUCKLOAD FOR THE QUANTITY OF CONTAINERS SHOWN. THIS DOES NOT LIMIT SHIPMENTS TO THIS QUANTITY, SINCE LTL SHIPMENTS MAY CONSIST OF A LESSEr NUMBER OF CONTAINERS.
4. WHEN SHIPPING 1 OR 3 CONTAINERS CENTER THE PREPOSITIONED BLOCKING FOR THE SINGLE CONTAINER ON THE CENTER LINE OF THE TRAILER.

TABLE I
LOAD PATTERN*

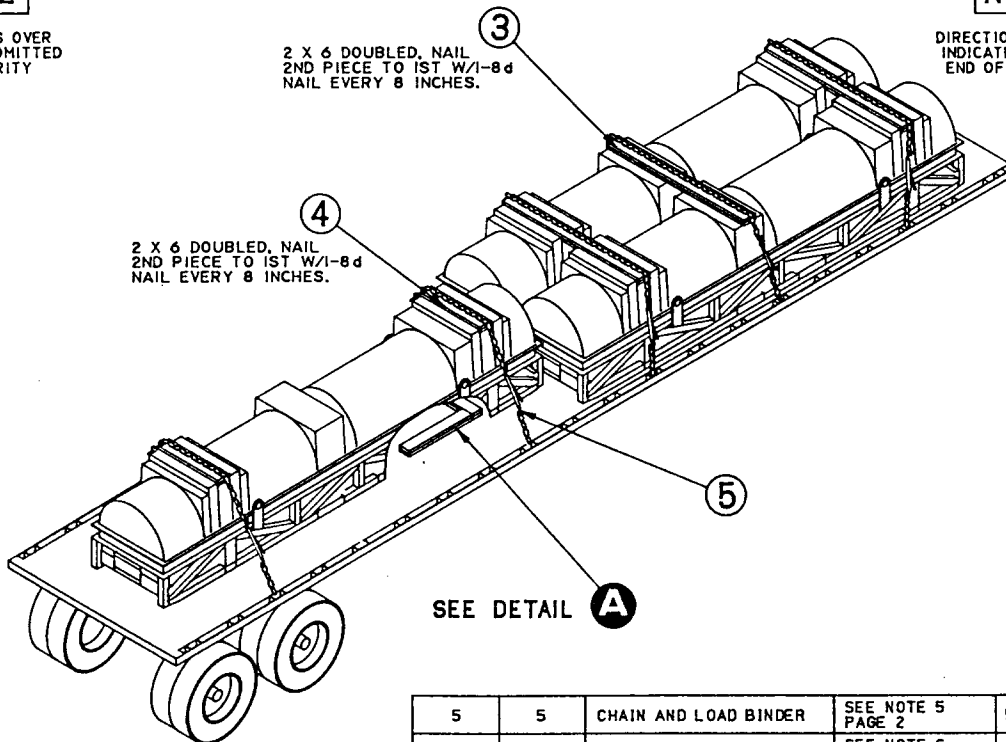


NOTE

TARPULINS OVER CONTAINER OMITTED FOR CLARITY

NOTE

DIRECTION OF ARROW INDICATES FORWARD END OF CONTAINER



WARNING

POSITIONING CONTAINER ON CENTER LINE OF TRAILER REQUIRES A MINIMUM 10,000 LB CAPACITY FORK TRUCK WITH MINIMUM 72 INCH FORK LENGTH OR A SUITABLE CRANE.

REQ'D	ITEM	DESCRIPTION	MAT'L/DWG	DIMENSIONS
5	5	CHAIN AND LOAD BINDER	SEE NOTE 5 PAGE 2	5/16 OR 3/8
4	4	PROTECTOR BOARD	SEE NOTE 6 PAGE 2	2 X 6 X 34
6	3	PROTECTOR BOARD	SEE NOTE 6 PAGE 2	2 X 6 X 78
24	2	PREPOSITIONED BACKUP CLEAT	SEE NOTE 8 PAGE 2	2 X 6 X 36
12	1	PREPOSITIONED CROSSMEMBER	SEE NOTE 8 PAGE 2	2 X 6 X 33 1/2

LIST OF MATERIALS

REVIEW ACTIVITY:
NAVY-05

PREPARING ACTIVITY:
NAVY-05
(PROJECT NO. 8140-N699)