

**NOTICE
OF VALIDATION**

INCH-POUND

**MIL-STD-1320/189B
NOTICE 2
13 MARCH 1991**

MILITARY STANDARD

**TRUCKLOADING, HARPOON CANISTER LOADED WITH GUIDED MISSILE
RGM-84A-3 IN SHIPPING AND STORAGE CONTAINER MK 631 MOD 0**

MIL-STD-1320/189B, dated 9 June 1980 and Notice 1, dated 6 March 1981, has been reviewed and determined to be valid for use in acquisition.

**Preparing activity:
Navy-OS**

**AMSC N/A
DISTRIBUTION STATEMENT A. Approved for public release; distribution is unlimited.**

FSC 8140

MIL-STD-1320-189B (NAVY)
Notice 1
6 March 1981

MILITARY STANDARD

TRUCKLOADING

HARPOON Canister
Load with Guided Missile RGM-84A-3
in Shipping and Storage Container Mk 631 Mod 0

TO ALL HOLDERS OF MIL-STD-1320-189B (NAVY)

P.5 Add the following notes:

- "5. When shipping 3 or 5 containers center the preposition blocking for the single container on the center line of the trailer."
- "6. When shipping 1 or 2 containers block both ends of the container using Detail D."

☆U.S. GOVERNMENT PRINTING OFFICE: 1981 — 703-023/3328

Activity:
Review Activities:
NAVY - OS

Preparing Activity:
NAVY - OS
(Project No. 8140-N496)

FSC 8140

MILITARY STANDARD

MIL-STD-1320-189 B

TRUCKLOADING

(NAVY)

HARPOON CANISTER

9 JUNE 1980

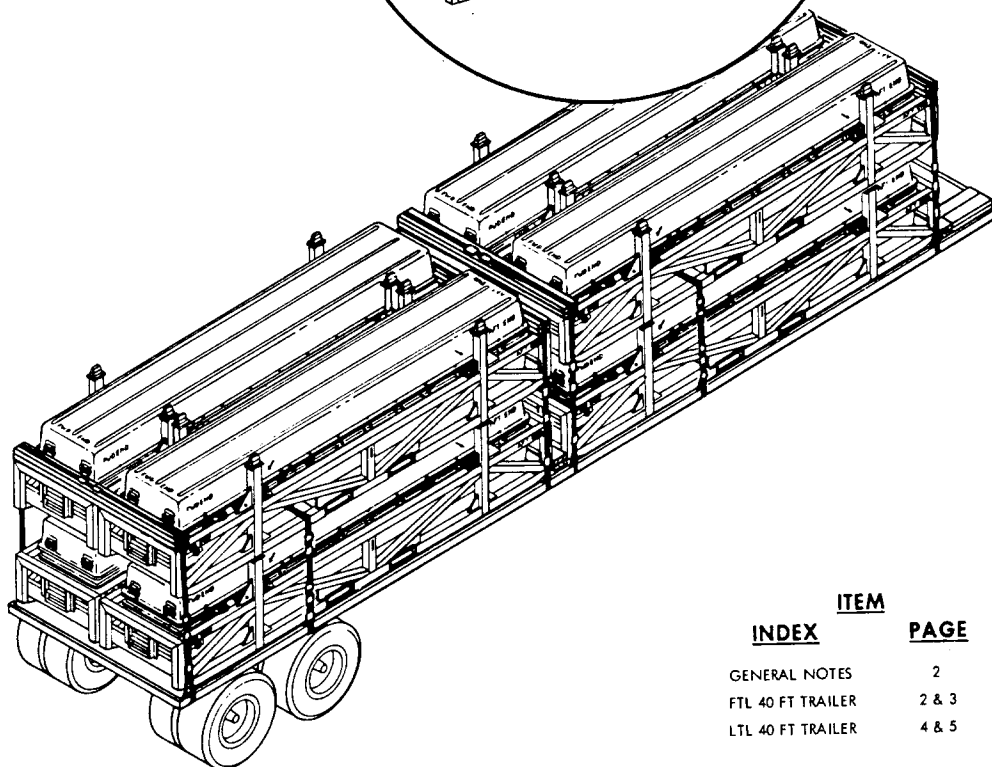
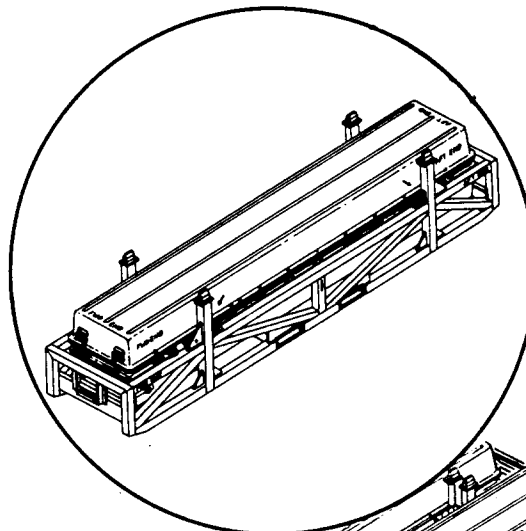
LOADED WITH GUIDED MISSILE RGM-84A-3
IN SHIPPING AND STORAGE CONTAINER MK 631 MOD 0

SUPERSEDING
MIL-STD-1320-189 A
29 MARCH 1979

CONTAINER DATA

DIMENSIONS.....217 L X 46.5 W X 47 H
STACKING HEIGHT.....44
TARE WT (APPROX.).....1250 LBS.
GROSS WEIGHT (APPROX.).....3200 LBS.
CUBE.....274.5 CU. FT.
DOT HAZARD CLASSIFICATION

LOADED - EXPLOSIVES A
EMPTY - INERT



INDEX	ITEM	PAGE
	GENERAL NOTES	2
	FTL 40 FT TRAILER	2 & 3
	LTL 40 FT TRAILER	4 & 5

- NOTES:
1. UNLESS OTHERWISE SPECIFIED DIMENSIONS ARE IN INCHES.
 2. FOR CROSS REFERENCE TO ASSOCIATED PALLETIZING, CONTAINERLOADING AND CARLOADING MILITARY STANDARDS, REFER TO INDEX TO STANDARDS, MIL-HDBK-236.

FSC 8140

**AUTHORIZED AND RELEASED
FOR HIGHWAY SHIPMENTS
ONLY**

**THIS DOCUMENT MAY BE USED FOR
TRUCKLOADING EMPTY CONTAINERS.**

M.S. Gray *UWV* 6/1/80
SIGNATURE TECHNICAL DIRECTION AGENT (TDA) DATE
J.S. Kelly 6/1/80
SIGNATURE DEASYSOM, BY DIRECTION DATE

ORIGINATOR *[Signature]* 6/1/80
NAVAL WEAPONS HANDLING CENTER DATE
WPNSTA EARLE, NEW JERSEY
PAGE 1 OF 5

MIL-STD-1320-189 B (NAVY)

GENERAL NOTES

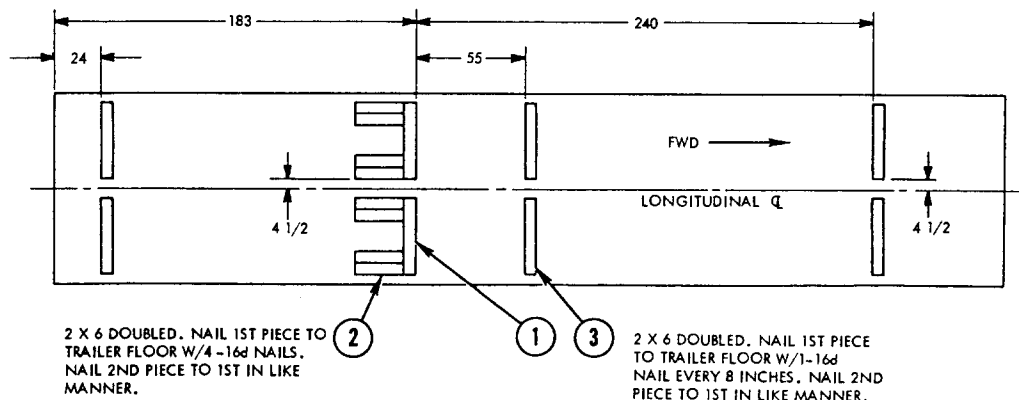
1. THIS DOCUMENT GIVES DETAILED INSTRUCTIONS FOR TRUCKLOADING THE HARPOON CANISTER LOADED WITH GUIDED MISSILE RGM-84A-3 IN SHIPPING AND STORAGE CONTAINER MK 631 MOD 0.
2. THE PROCEDURES AND PRACTICES DESCRIBED HEREIN ARE INTENDED FOR 40 FT FLATBED TRAILERS WITH THE TRAILER TANDEM AXLES LOCATED IN THE "WESTERN" POSITION (AT THE EXTREME REAR OF THE TRAILER). DO NOT USE TRAILERS WITH NON-NAILABLE FLOORS.
3. CHAINS AND STEEL STRAPPING MAY BE USED INTERCHANGEABLY ON A ONE TO ONE BASIS FOR THE END TIE DOWNS ON THE CONTAINERS.

CAUTION

DO NOT USE CHAIN FOR THE CENTER TIE DOWN,
ONLY 2 X .050 STEEL STRAPPING SHALL BE USED.

4. ONE LAYER HIGH STACKS OF CONTAINERS SHALL HAVE A MINIMUM OF TWO TIE DOWNS. TWO LAYER HIGH STACKS SHALL HAVE THREE TIE DOWNS.
5. STEEL STRAPPING USED AS TIE DOWNS SHALL BE 2 X .050 AND SHALL CONFORM TO AND BE APPLIED AS SPECIFIED IN THE GENERAL TRUCKLOADING DOCUMENT MIL-STD-1320 AND AS SHOWN IN THIS DOCUMENT.
6. CHAINS, FITTINGS AND LOAD BINDERS SHALL MEET THE REQUIREMENTS OF THE BASIC TRUCKLOADING DOCUMENT, MIL-STD-1320.
7. PROTECTOR BOARDS (PIECE NO. 9) SHALL BE USED UNDER THE TIE DOWNS. WHEN USING STEEL STRAPPING, THE STRAPS SHALL BE STAPLED TO THE PROTECTOR BOARD USING 2 INCH STRAPPING STAPLES. WHEN USING CHAIN, IT SHALL BE SECURED TO THE PROTECTOR BOARD BY DRIVING A 20d NAIL THROUGH THE CHAIN LINK AND CLINCHING THE NAIL OVER THE CHAIN. FIVE STAPLES/NAILS SHALL BE USED FOR EACH TIE DOWN.
8. PRIOR TO LOADING THE TRAILER AND DURING PRELOADING INSPECTION REQUIRED BY NAVWEP 2165 AND REPORTED ON DD FORM 626, THE CHAINS, FITTINGS AND LOAD BINDERS SHALL BE INSPECTED FOR STRETCH, GOUGING, BENT LINKS, WEAR AND ANY OTHER NOTICEABLE DEFECTS. THE INSPECTOR SHALL CONFIRM THAT THE CHAINS AND LOAD BINDERS HAVE BEEN INSPECTED AND SHALL SO NOTE IN ITEM NO. 22 OF DD FORM 626. ANY DEFICIENCY SHALL BE CAUSE FOR REJECTION OF A CHAIN OR LOAD BINDER.
9. THE MAXIMUM GROSS WEIGHT OF THE TRACTOR-TRAILER AND THE ALLOWABLE AXLE WEIGHTS ARE THE RESPONSIBILITY OF THE CARRIER. THE CARRIER WILL ADVISE THE SHIPPER OF THESE LIMITATIONS AND THE SHIPPER SHALL LOAD THE TRAILER IN SUCH A MANNER THAT THE TRACTOR-TRAILER WILL NOT EXCEED THESE LIMITATIONS.
10. AFTER BLOCKING AND BRACING HAS BEEN INSPECTED, ATTACH SHIPPING DOCUMENTS TO AN ACCESSIBLE AREA AND ATTACH "EXPLOSIVES A" PLACARD TO BOTH SIDES, FRONT AND BACK OF TRAILER. (LOADED CONTAINERS ONLY).
11. UNLESS OTHERWISE SPECIFIED, ALL MATERIAL SHALL BE AS SPECIFIED IN THE GENERAL TRUCKLOADING DOCUMENT, MIL-STD-1320.
12. FOR GENERAL TRUCKLOADING PROCEDURES REFER TO THE GENERAL TRUCKLOADING DOCUMENT MIL-STD-1320.

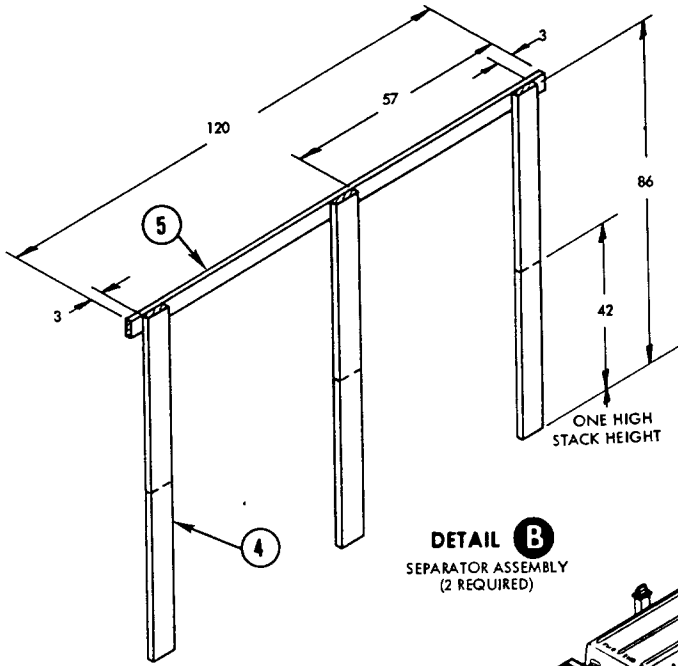
FTL 40 FT TRAILER (FLATBED)



DETAIL A

PREPOSITIONED FLOOR BLOCKING

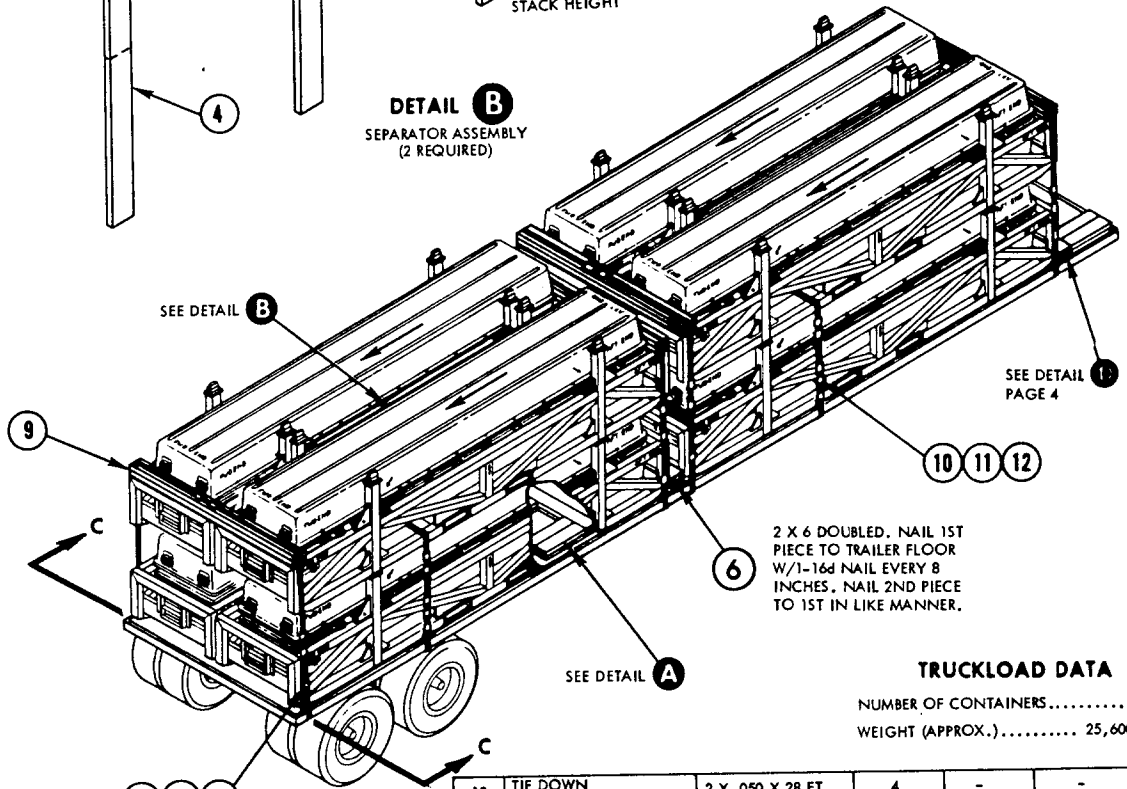
MIL-STD-1320-189B (NAVY)



NOTE

DIRECTION OF ARROW INDICATES FORWARD END OF CONTAINER

DETAIL B
SEPARATOR ASSEMBLY
(2 REQUIRED)

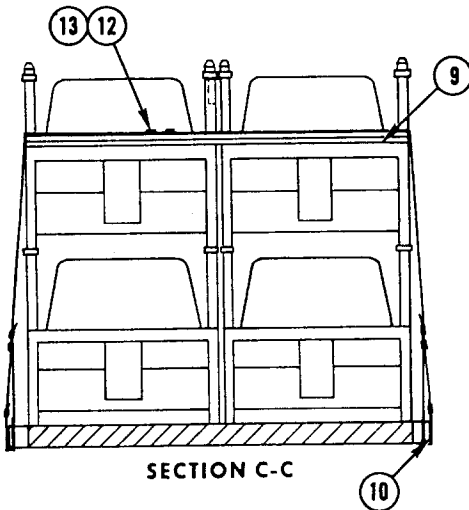


2 X 6 DOUBLED. NAIL 1ST PIECE TO TRAILER FLOOR W/1-16d NAIL EVERY 8 INCHES. NAIL 2ND PIECE TO 1ST IN LIKE MANNER.

TRUCKLOAD DATA

NUMBER OF CONTAINERS..... 8
WEIGHT (APPROX.)..... 25,600 LBS.

10 12 13
SEE GENERAL NOTE 3



13	TIE DOWN STRAPPING (END)	2 X .050 X 28 FT	4	-	-	-
12	SEAL	FOR 2" STRAP	48	-	-	-
11	TIE DOWN STRAPPING (CENTER)	2 X .050 X 24 FT	2	-	-	-
10	PAD (STRAPPING)	2 X .050 X 24	12	-	-	-
9	PROTECTOR BOARD	2 X 6 X 92 1/2	8	DOUBLED & LAMINATED	2 PER FT	12d
8	END BACKUP CLEAT	2 X 6 X 24	12	SEE DETAIL D, PAGE 4		
7	END CROSSMEMBER	2 X 6 X 90	2	SEE DETAIL D, PAGE 4		
6	CENTER CROSSMEMBER	2 X 6 X 96	2	SEE FIELD NOTE		
5	CROSS PIECE	2 X 4 X 120	2	4	3 PER JOINT	10d
4	UPRIGHT	2 X 6 X 86	6	SEE 5	-	-
3	PREPOSITIONED CROSSMEMBER	2 X 6 X 38	12	SEE DETAIL A		
2	PREPOSITIONED BACKUP CLEAT	2 X 6 X 24	16	SEE DETAIL A		
1	PREPOSITIONED CROSSMEMBER	2 X 6 X 38	4	SEE DETAIL A		
PIECE NO.	DESCRIPTION	SIZE	NO. OF PIECES REQ'D	NAIL TO	NUMBER	SIZE
					NAILS	

LIST OF MATERIALS & NAILING DATA

MIL-STD-1320-189 B (NAVY)

LTL 40 FT TRAILER (FLATBED)

1. WHEN REQUIRED TO SHIP LESS-THAN-TRUCKLOAD, SELECT THE CORRECT LOAD PATTERN FOR THE NUMBER OF CONTAINERS TO BE SHIPPED FROM TABLE I.
2. SEVEN CONTAINERS CREATES A STACK UNEVEN IN HEIGHT AND SHOULD NOT BE SHIPPED BECAUSE OF WEIGHT DISTRIBUTION AND TIE-DOWN PROBLEMS.
3. POSITION CONTAINERS ON TRAILER AS SHOWN IN TABLE. BLOCK AND TIE-DOWN LADING USING THE PRINCIPLES SHOWN ON PAGES 3 AND 5 AND THE GENERAL DOCUMENT, MIL-STD-1320.
4. THE LTL PLAN SHOWN ON PAGE 5 IS THE CORRECT LESS-THAN-TRUCKLOAD FOR THE QUANTITY OF CONTAINERS SHOWN. THIS DOES NOT LIMIT LTL SHIPMENTS TO THIS QUANTITY, SINCE LTL SHIPMENTS MAY CONSIST OF A LESSER NUMBER OF CONTAINERS.

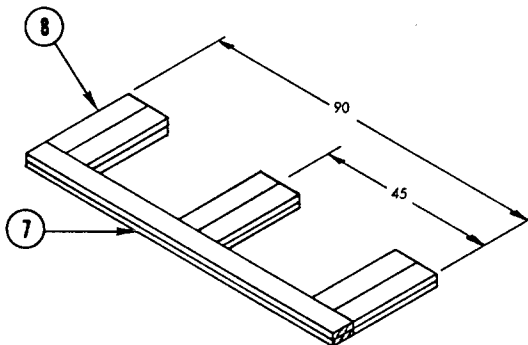
TABLE I

NO. OF CONTAINERS	LOAD PATTERN*	FWD →	NO. OF CONTAINERS	LOAD PATTERN*	FWD →
6			3		
5			2		
4			1		

*NUMBER IN RECTANGLE INDICATES NUMBER OF CONTAINERS IN A LAYER. ARROWS INDICATE NOSE END OF CONTAINER

2 X 6 DOUBLED. NAIL 1ST PIECE TO TRAILER FLOOR W/4d NAILS. NAIL 2ND PIECE TO 1ST IN LIKE MANNER.

2 X 6 DOUBLED. NAIL 1ST PIECE TO TRAILER FLOOR W/1-16d NAIL EVERY 8 INCHES. NAIL 2ND PIECE TO 1ST IN LIKE MANNER.

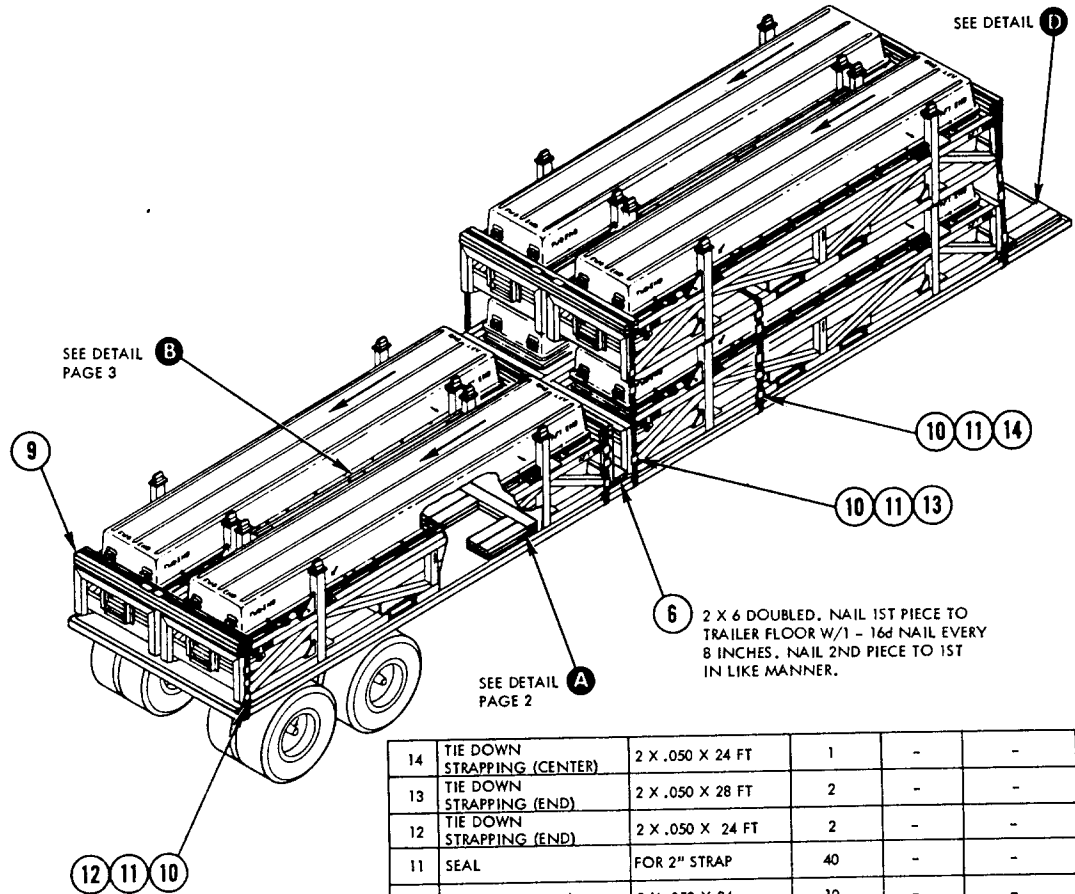


DETAIL D

MIL-STD-1320-189B (NAVY)

NOTE

DIRECTION OF ARROW
INDICATES FORWARD
END OF CONTAINER



6 2 X 6 DOUBLED. NAIL 1ST PIECE TO TRAILER FLOOR W/1 - 16d NAIL EVERY 8 INCHES. NAIL 2ND PIECE TO 1ST IN LIKE MANNER.

14	TIE DOWN STRAPPING (CENTER)	2 X .050 X 24 FT	1	-	-	-
13	TIE DOWN STRAPPING (END)	2 X .050 X 28 FT	2	-	-	-
12	TIE DOWN STRAPPING (END)	2 X .050 X 24 FT	2	-	-	-
11	SEAL	FOR 2" STRAP	40	-	-	-
10	PAD (STRAPPING)	2 X .050 X 24	10	-	-	-
9	PROTECTOR BOARD	2 X 6 X 92 1/2	8	DOUBLE LAMINATE	2 PER FOOT	12d
8	END BACKUP CLEAT	2 X 6 X 24	12	SEE DETAIL D		
7	END CROSSMEMBER	2 X 6 X 90	2	SEE DETAIL D		
6	CENTER CROSSMEMBER	2 X 6 X 96	2	SEE FIELD NOTE		
5	CROSS PIECE	2 X 6 X 120	2	4	3 PER JOINT	10d
4	UPRIGHT	2 X 6 X AS REQ'D	6	SEE 5	-	-
3	CROSSMEMBER	2 X 6 X 30	12	SEE DETAIL A		
2	BACKUP CLEAT	2 X 6 X 24	16	SEE DETAIL A		
1	CROSSMEMBER	2 X 6 X 39	4	SEE DETAIL A		
PIECE NO.	DESCRIPTION	SIZE	NO. OF PIECES REQ'D	NAIL TO	NUMBER NAILS	SIZE
LIST OF MATERIALS & NAILING DATA						

FTL 40 FT TRAILER (FLATBED)

REVIEW ACTIVITY:
NAVY - OS

PREPARING ACTIVITY:
NAVY - OS
(PROJECT NO. B140 - N474)