

TRUCKLOAD

SLAM GUIDED MISSILE, (AGM-84 & ATM-84)

IN CONTAINER, MK 724 OR CNU-595/E

CONTAINER DATA

DIMENSIONS (L x W x H):

MK 724 186 x 37.58 x 30.2

CNU-595/E 181 x 33.75 x 31

NO. OF ITEMS PER CONTAINER:

MK 724 2 MISSILES

CNU-595/E 1 MISSILE

| CONTAINER | GROSS WT. (LB) Δ | TARE WT. (LB) Δ |
|--------------|-------------------------|------------------------|
| MK 724 MOD 0 | 3831 | 1107 |
| MK 724 MOD 1 | 3924 | 1197 |
| CNU-595/E | 2900 | 1365 |

Δ DO NOT USE FOR SHIPPING WEIGHT

1. UNLESS OTHERWISE SPECIFIED, DIMENSIONS ARE IN INCHES.
2. SEE SW020-AC-SAF-010 FOR THE FOLLOWING INFORMATION:
 - A.) CROSS REFERENCE TO ASSOCIATED PALLETIZING, CONTAINER LOADING AND CAR LOADING MILITARY STANDARDS.
 - B.) HAZARD CLASSIFICATION.

| | | | | |
|------|--|----------|-------|--------|
| B | SEE NSWC IHD DET EARLE ECP I02023 | 3/21/02 | S/AVS | S/KZ |
| A | SEE NSWC IHD DET EARLE ECP I99136 REV R1 | 12/30/99 | S/AVS | S/KZ |
| - | ORIGINAL ISSUE, SUPERSEDES MIL-1320-251A | 12/30/97 | S/AVS | S/KZ |
| REV. | REVISION DESCRIPTION | DATE | TDA | SYSCOM |

| | | | | |
|---|-------|-----------------|---|--|
| DRAWN BY | S/BJK | 12/30/97 | DISTRIBUTION STATEMENT A APPROVED FOR PUBLIC RELEASE DISTRIBUTION IS UNLIMITED THIS TRUCKLOAD IS AUTHORIZED AND RELEASED FOR HIGHWAY SHIPMENT ONLY. | |
| ENGINEER | S/BJK | 12/30/97 | | |
| SYSTEMS ENGINEER | S/RV | 1/5/98 | | |
| SYSTEMS ENG. SUPERVISOR | S/GB | 1/6/98 | | |
| TECH DATA MANAGEMENT SUPERVISOR | S/AVS | 12/30/97 | | |
| S/ K. H. ZIMMS 1/6/98 | | | | |
| NAVSEASYSKOM (BY DIRECTION) | | | DWG NO. 6213960 REV. B | |
| DEPARTMENT OF THE NAVY NAVAL SEA SYSTEMS COMMAND ARLINGTON, VA 22242-5160 | | CAGE CODE 53711 | | |
| SIZE A | | | PAGE 1 OF 4 | |

GENERAL NOTES:

1. THIS DOCUMENT GIVES DETAILED INSTRUCTIONS FOR TRUCKLOADING THE AGM-84-E & THE ATM-84-E (SLAM) GUIDED MISSILE IN THE SHIPPING & STORAGE CONTAINER MK 724 MODS 0 AND 1 OR THE AGM-84-H & ATM-84-H (SLAM ER) GUIDED MISSILE IN THE SHIPPING & STORAGE CONTAINER CNU-595/E.
2. THE PROCEDURES DESCRIBED HEREIN ARE INTENDED FOR 40 FT OR LONGER FLATBED TRAILERS. DO NOT USE TRAILERS WITH ALL METAL FLOORS.
3. THE MAXIMUM GROSS WEIGHT OF THE TRACTOR-TRAILER AND THE ALLOWABLE AXLE WEIGHTS ARE THE RESPONSIBILITY OF THE CARRIER. THE CARRIER WILL ADVISE THE SHIPPER OF THESE LIMITATIONS, AND THE SHIPPER SHALL LOAD THE TRAILER IN SUCH A MANNER THAT THE TRACTOR-TRAILER WILL NOT EXCEED THESE LIMITATIONS.
4. THE MAXIMUM NUMBER OF CONTAINERS THAT CAN BE LOADED ONTO A 40 THRU 48 FT. TRAILER IS 8 CONTAINERS.
5. MIXED LOADS OF DIFFERENT CONTAINERS ARE PERMISSIBLE. HOWEVER, ONLY ONE TYPE OF CONTAINER IS PERMITTED IN A STACK. (A STACK IS A PILE OF CONTAINERS EXTENDING FROM ONE SIDE OF THE TRAILER TO THE OTHER AND ONE UNIT IN LENGTH.)
6. UNLESS OTHERWISE SPECIFIED, DUNNAGE LUMBER, STEEL STRAPPING, STRAP SEALS, AND NAILS SHALL BE AS SPECIFIED IN THE GENERAL TRUCKLOADING DOCUMENT MIL-STD-1320 (NAVY).
7. CHAINS, STEEL STRAPPING, OR 4 INCH WEB STRAPPING MAY BE USED INTERCHANGEABLY ON A ONE-TO-ONE BASIS FOR TIEDOWNS.
 - A. CHAINS, FITTINGS, AND LOAD BINDERS SHALL CONFORM TO AND BE APPLIED AS SPECIFIED IN THE GENERAL TRUCKLOADING DOCUMENT, MIL-STD-1320 (NAVY), EXCEPT THAT THE CHAIN/GRAB HOOKS SHALL BE ATTACHED TO THE STAKE POCKETS (NOT AROUND THE RUB RAIL).
 - B. STEEL STRAPPING USED AS TIEDOWNS SHALL BE 2 X .050 AND SHALL CONFORM TO AND BE APPLIED AS SPECIFIED IN THE GENERAL TRUCKLOADING DOCUMENT, MIL-STD-1320 (NAVY).
 - C. REFER TO NAVSEA DRAWING 6214037 FOR GUIDANCE ON USAGE OF WEB STRAPS. PROTECTOR BOARDS (ITEM 4 ON PAGE 3) ARE NOT REQUIRED WHEN USING WEB STRAPS. WHEN LOCATING WEB STRAPS, AVOID CONTACT WITH ANY SHARP EDGES OR IRREGULAR SURFACES WHICH COULD CAUSE DAMAGE TO WEB STRAP. IF CONTACT WITH SHARP EDGES OR IRREGULAR SURFACES CANNOT BE AVOIDED, USE EDGE PROTECTORS, STRAPPING BOARDS AND/OR SCUFF SLEEVES TO PROTECT WEB STRAPS.
8. DURING PRELOADING INSPECTION REQUIRED BY NAVSEA SW020-AG-SAF-010, WEB STRAP ASSEMBLIES SHALL BE INSPECTED ACCORDING TO NAVSEA DWG. 6214037. RESULTS OF THIS INSPECTION SHALL BE RECORDED IN ITEM 12-T OF DD FORM 626. ANY DEFICIENCY SHALL BE CAUSE FOR REJECTION OF A WEB STRAP ASSEMBLY.
9. PROTECTOR BOARDS (DOUBLED 2 X 6'S) SHALL BE USED UNDER THE TIEDOWNS WHEN USING STEEL STRAPPING. THE STRAPS SHALL BE SECURED TO THE PROTECTOR BOARD USING 2-INCH STRAPPING STAPLES. WHEN USING CHAIN, THE CHAINS SHALL BE SECURED TO THE PROTECTOR BOARD BY DRIVING A 10d NAIL THROUGH THE CHAIN LINK AND CLINCHING THE NAIL OVER THE CHAIN. FIVE STAPLES/NAILS SHALL BE USED FOR EACH TIEDOWN.
10. INNER PROTECTOR BOARDS (2x6's) SHALL BE USED THROUGH ONE OF THE UPPER LAYER CONTAINER'S FORKLIFT POCKETS IN EACH STACK USING CROSS STRAPS. THE CROSS STRAPS SHALL BE SECURED USING STRAP SEALS.
11. AFTER THE BLOCKING, BRACING AND TIEDOWNS HAVE BEEN INSPECTED, THE CONTAINERS SHALL BE COMPLETELY COVERED WITH FIRE RESISTANT, WATERPROOF TARPULINS. THE TARPULINS MAY BE UNDER THE TIEDOWNS AND THE PROTECTOR BOARDS.
12. AFTER THE TARPULINS ARE IN PLACE, ATTACH THE PROPER EXPLOSIVES PLACARDS TO BOTH SIDES, FRONT AND BACK OF THE TRAILER, AND ATTACH THE SHIPPING DOCUMENTS TO AN ACCESSIBLE AREA ON THE BACK DECK OF THE TRAILER.
13. FOR GENERAL TRUCKLOADING PROCEDURES REFER TO THE GENERAL TRUCKLOADING DOCUMENT MIL-STD-1320 (NAVY).

DEPARTMENT OF THE NAVY
NAVAL SEA SYSTEMS COMMAND
ARLINGTON, VA 22242-5160

CAGE CODE
53711

DWG NO. 6213960

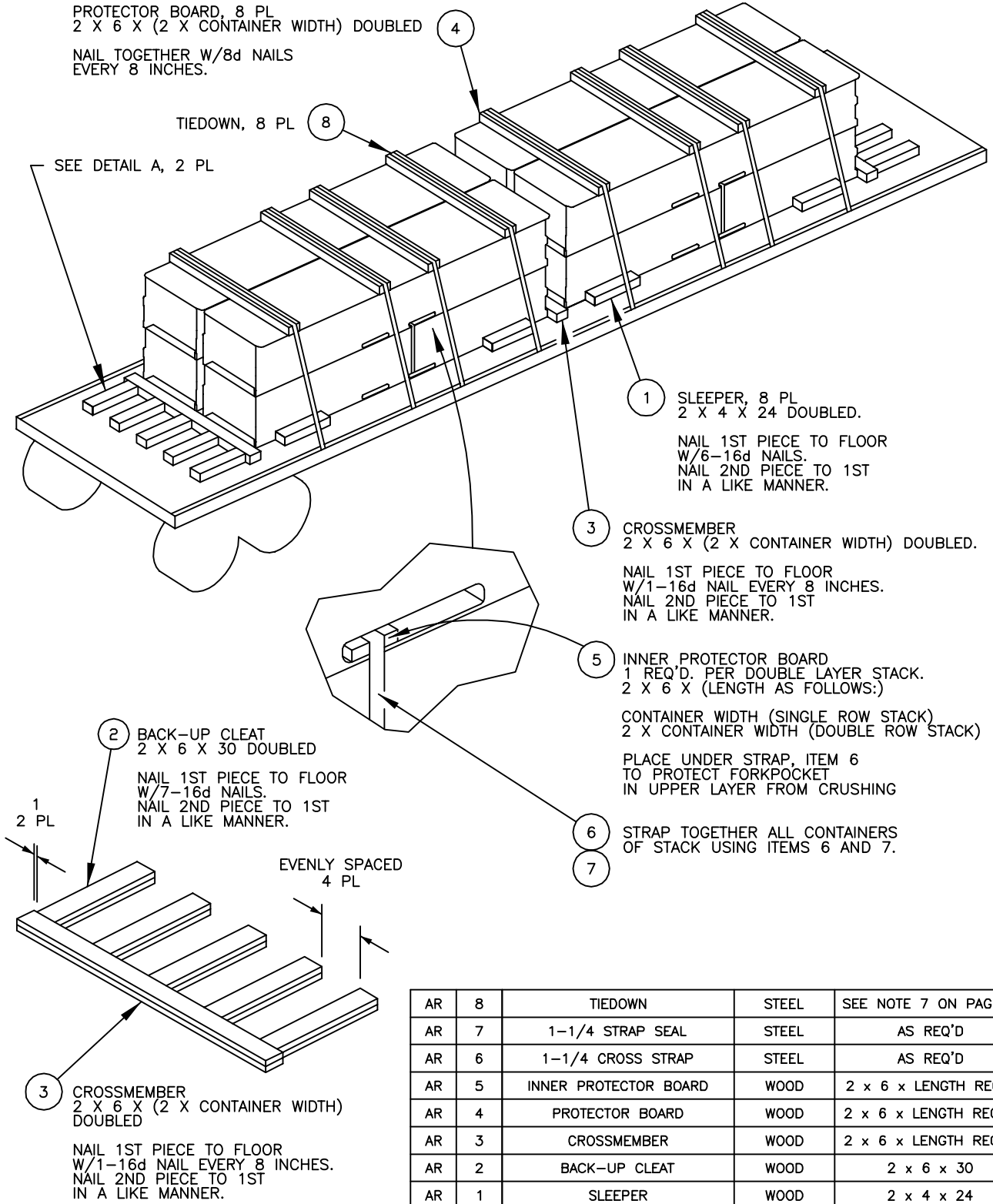
REV. B

SIZE A

PAGE 2 OF 4

FTL 40 THRU 48 FT FLATBED TRAILER

NOTE: TARPULINS OVER CONTAINERS ARE OMITTED FOR CLARITY.
SEE NOTE 5 ON PAGE 2 FOR INFORMATION ON MIXED LOADS.



PROTECTOR BOARD, 8 PL
2 X 6 X (2 X CONTAINER WIDTH) DOUBLED

NAIL TOGETHER W/8d NAILS
EVERY 8 INCHES.

TIEDOWN, 8 PL

SEE DETAIL A, 2 PL

1 SLEEPER, 8 PL
2 X 4 X 24 DOUBLED.

NAIL 1ST PIECE TO FLOOR
W/6-16d NAILS.
NAIL 2ND PIECE TO 1ST
IN A LIKE MANNER.

3 CROSSMEMBER
2 X 6 X (2 X CONTAINER WIDTH) DOUBLED.

NAIL 1ST PIECE TO FLOOR
W/1-16d NAIL EVERY 8 INCHES.
NAIL 2ND PIECE TO 1ST
IN A LIKE MANNER.

5 INNER PROTECTOR BOARD
1 REQ'D. PER DOUBLE LAYER STACK.
2 X 6 X (LENGTH AS FOLLOWS:)

CONTAINER WIDTH (SINGLE ROW STACK)
2 X CONTAINER WIDTH (DOUBLE ROW STACK)

PLACE UNDER STRAP, ITEM 6
TO PROTECT FORKPOCKET
IN UPPER LAYER FROM CRUSHING

6 STRAP TOGETHER ALL CONTAINERS
OF STACK USING ITEMS 6 AND 7.

2 BACK-UP CLEAT
2 X 6 X 30 DOUBLED

NAIL 1ST PIECE TO FLOOR
W/7-16d NAILS.
NAIL 2ND PIECE TO 1ST
IN A LIKE MANNER.

1 PL
2 PL

EVENLY SPACED
4 PL

3 CROSSMEMBER
2 X 6 X (2 X CONTAINER WIDTH)
DOUBLED

NAIL 1ST PIECE TO FLOOR
W/1-16d NAIL EVERY 8 INCHES.
NAIL 2ND PIECE TO 1ST
IN A LIKE MANNER.

DETAIL A

| | | | | |
|------|------|-----------------------|------------|-----------------------|
| AR | 8 | TIEDOWN | STEEL | SEE NOTE 7 ON PAGE 2 |
| AR | 7 | 1-1/4 STRAP SEAL | STEEL | AS REQ'D |
| AR | 6 | 1-1/4 CROSS STRAP | STEEL | AS REQ'D |
| AR | 5 | INNER PROTECTOR BOARD | WOOD | 2 x 6 x LENGTH REQ'D |
| AR | 4 | PROTECTOR BOARD | WOOD | 2 x 6 x LENGTH REQ'D. |
| AR | 3 | CROSSMEMBER | WOOD | 2 x 6 x LENGTH REQ'D. |
| AR | 2 | BACK-UP CLEAT | WOOD | 2 x 6 x 30 |
| AR | 1 | SLEEPER | WOOD | 2 x 4 x 24 |
| REQ. | ITEM | DESCRIPTION | MAT'L/DWG. | DIMENSIONS |

LIST OF MATERIALS

DEPARTMENT OF THE NAVY
NAVAL SEA SYSTEMS COMMAND
ARLINGTON, VA 22242-5160

CAGE CODE
53711

DWG NO. 6213960

REV. B

SIZE A

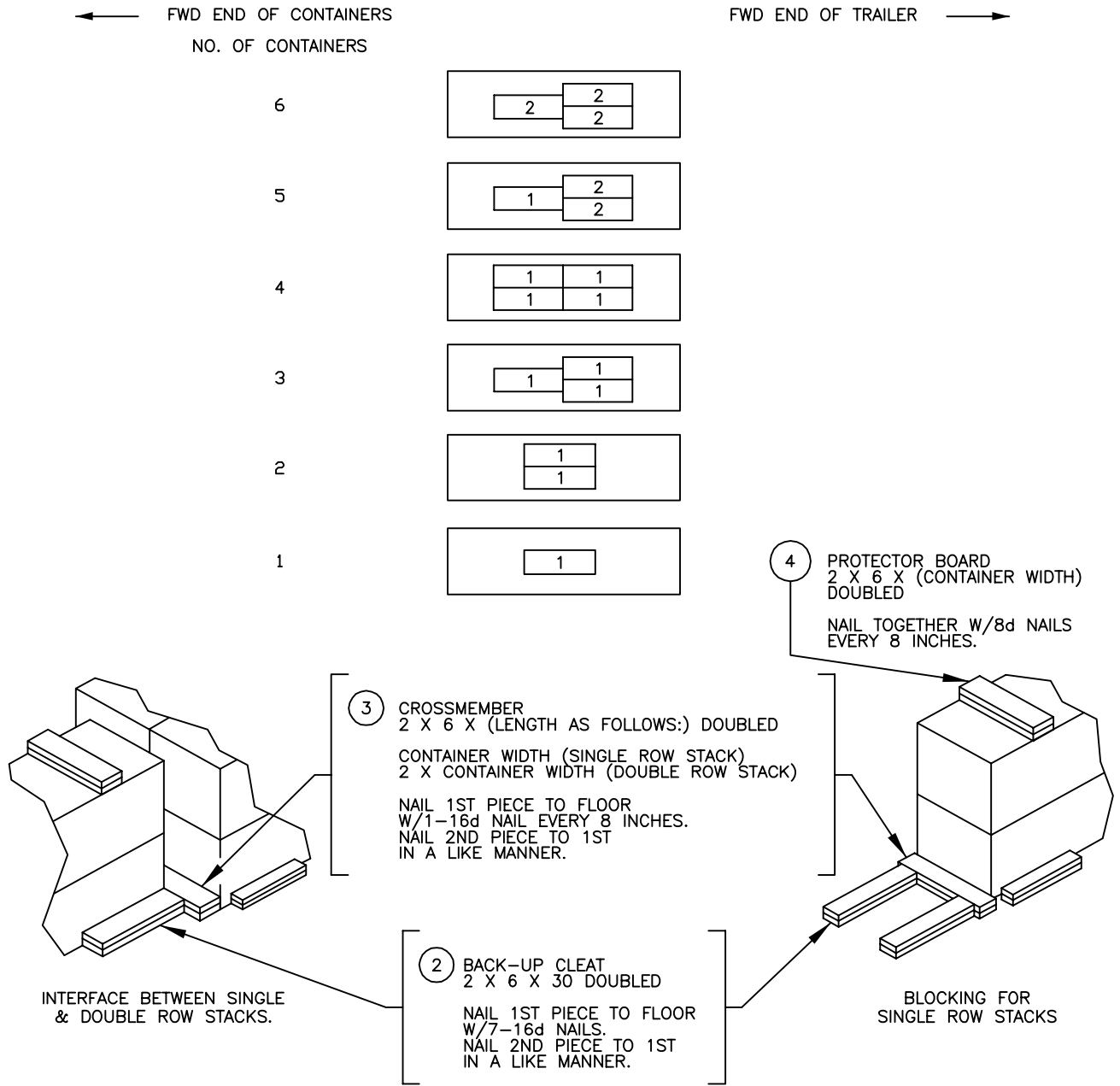
PAGE 3 OF 4

LTL 40 FT AND LONGER FLATBED TRAILERS

1. FOR LTL SHIPMENTS, POSITION CONTAINERS ACCORDING TO LOAD PATTERNS SHOWN IN TABLE 1.
2. SEE NOTE 5 ON PAGE 2 FOR INFORMATION ON MIXED LOADS.

TABLE 1

SEE DETAIL B FOR ADDITIONAL BLOCKING INFORMATION



DETAIL B

BLOCKING FOR VARIOUS LTL COMBINATIONS.

SEE ENLARGED VIEW OF ITEM 5 ON PAGE 3 FOR INFORMATION ON INNER PROTECTOR BOARD FOR SINGLE ROW STACKS.
FOR DOUBLE ROW STACKS, USE SAME BLOCKING AS SHOWN ON FTL FOR 8 CONTAINERS (PAGE 3).

DEPARTMENT OF THE NAVY
NAVAL SEA SYSTEMS COMMAND
ARLINGTON, VA 22242-5160

CAGE CODE
53711

DWG NO. 6213960

REV. B

SIZE A

PAGE 4 OF 4