

REVISION NO. 1	APPROVED
BUREAU OF EXPLOSIVES	
<i>A. F. Grassmuck</i>	
MILITARY ASSISTANT	
DATE 1/22/60	

LOADING & BRACING ON FLAT BED TRAILER OF THE INERT AND EXPLOSIVE COMPONENTS, IN RELATED CONTAINERS, FOR THE NIKE-HERCULES GUIDED MISSILE

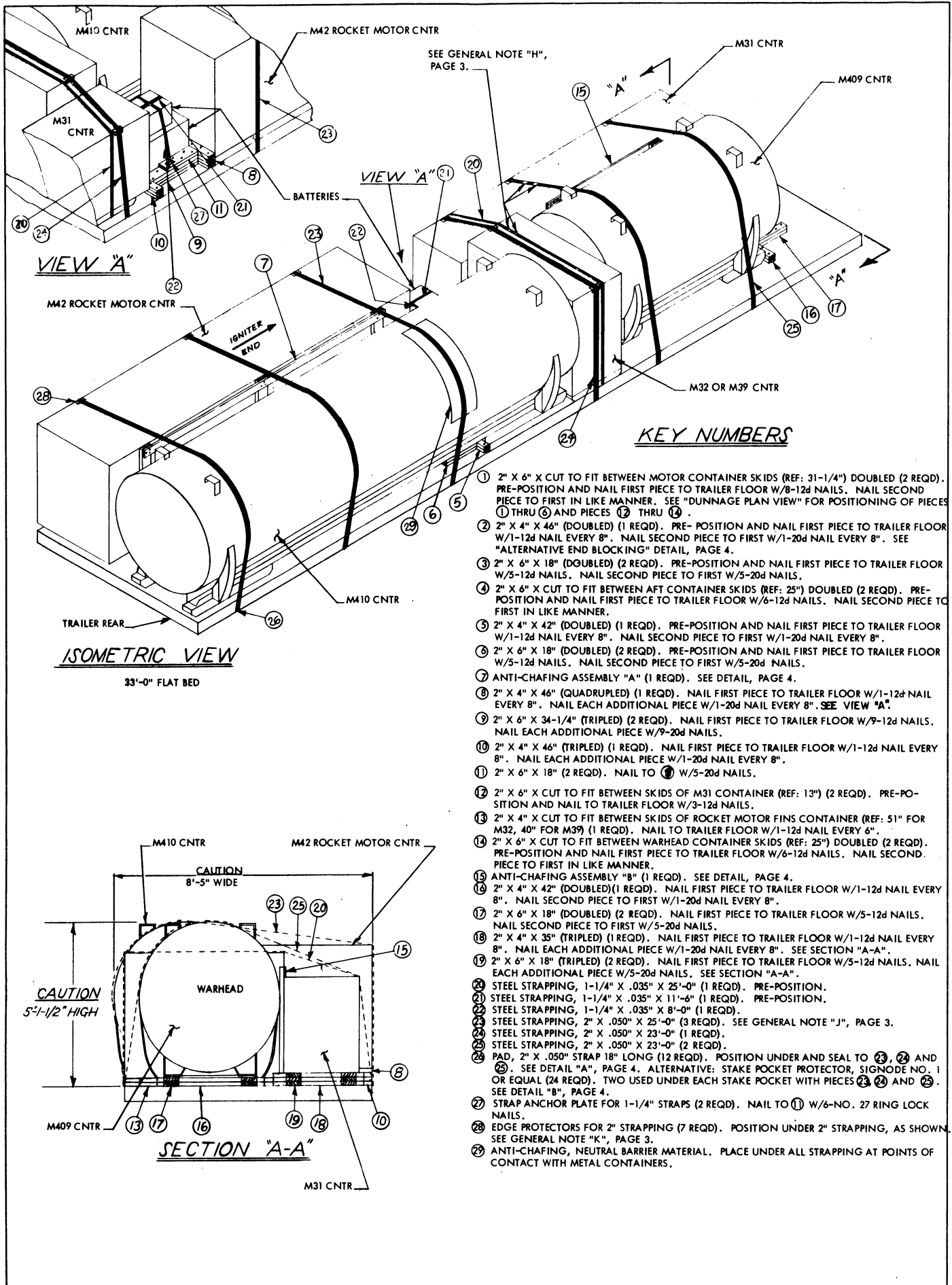
WARNING

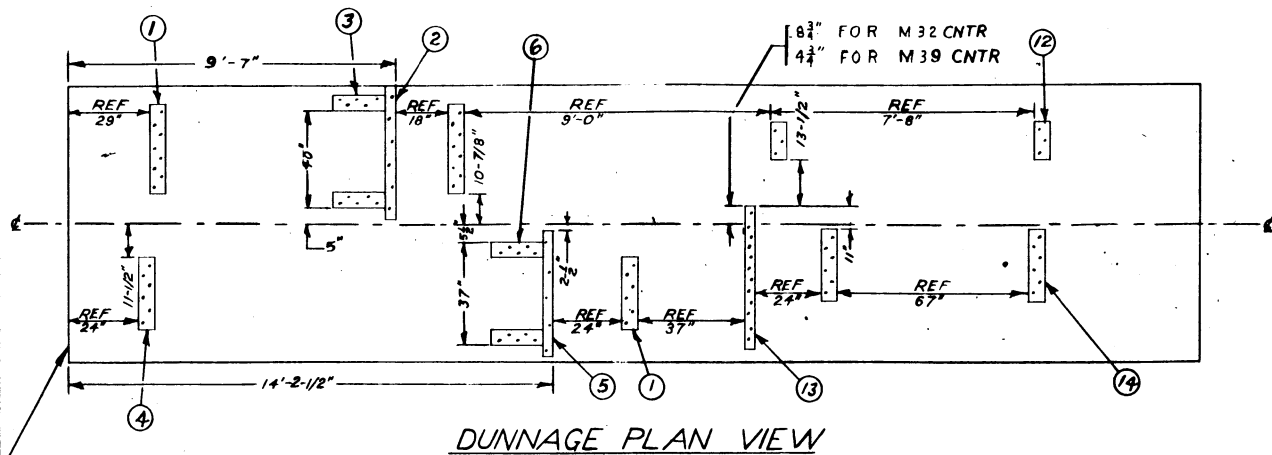
LOAD AS SHOWN HEREIN REQUIRES THE CLEARANCE OF THE LOCAL TRANSPORTATION OFFICER DUE TO THE EXCESSIVE WIDTH OF THE LOAD.

LOADING & BRACING ON FLAT BED TRAILER OF THE INERT AND EXPLOSIVE COMPONENTS, IN RELATED CONTAINERS, FOR THE NIKE-HERCULES GUIDED MISSILE

DRAFTER DLN	APPROVAL NO. 01	DESIGNER DIW / AGE	SUBMITTED
CHECKER GWP	CHECKER	ENGINEER AA	B.B. Abrams
			COMMANDER, SAVANNA ARMY DEPOT
REVISIONS			APPROVED
1	6 JUNE 64	GWP	<i>Andrew W. Blood</i>
			ARMY MISSILE COMMAND
			APPROVED BY ORDER OF COMMANDER, ARMY MATERIEL COMMAND
			<i>Paul Klean</i>
			ARMY SUPPLY & MAINTENANCE COMMAND
			MATERIEL COMMAND U.S.A.
			20 APRIL 1960
			CLASS DIVISION DRAWING FILE
			19 48 5588 GM11M11

DO NOT SCALE





DUNNAGE PLAN VIEW

GENERAL NOTES

- A. LOAD AS SHOWN IS BASED ON A FLAT BED TRAILER 33'-0" LONG X 8'-0" WIDE WITH WOOD OR WOOD AND METAL FLOOR. TRAILERS WITH ALL METAL FLOORS WILL NOT BE USED.
CAUTION: LADING WIDTH - 8'-5"
- B. GROSS WEIGHT AND AXLE DISTRIBUTION OF WEIGHT WILL BE IN ACCORDANCE WITH PARAGRAPH 8, 346.4, ORDM 3-4, VOL 3.
- C. SELECTION OF VEHICLE TO BE USED TO TRANSPORT GUIDED MISSILE AMMUNITION AND/OR COMPONENTS THEREOF, MUST COMPLY WITH AR 55-355, CHAPTER 213, FOR EXPLOSIVES OR OTHER DANGEROUS ARTICLES, IN FULL.
- D. NOTICE: A SHIPMENT WILL BE POSITIONED ON THE TRAILER CONSISTENT WITH STATE WEIGHT LAWS. THE NUMBER OF UNITS MAY BE ADJUSTED TO FIT THE QUANTITY TO BE SHIPPED; HOWEVER, THE APPROVED METHODS CONTAINED HEREIN FOR FULL OR PARTIAL TRUCKLOAD MUST BE FOLLOWED FOR BLOCKING, BRACING AND STAYING OF THESE ITEMS.

E. CONTAINER DATA:

ITEM	DIMENSIONS	WEIGHT (APPROX)	DWG NO
AFT SECTION IN M410 CNTR	223-1/2" L X 54-3/4" W X 61-1/2" H	4,606 LBS	9031007
WARHEAD IN M409 CNTR	99-1/4" L X 54-3/8" W X 61-1/2" H	3,170 LBS	9031006
CONTROL SURFACE KIT IN			
M31 CNTR	147-1/2" L X 29" W X 42-1/8" H	1,050 LBS	8524211
ROCKET MOTOR FIN IN			
M32 CNTR	62-5/16" L X 29-5/16" W X 51-3/4" H	644 LBS	8524212
M39 CNTR	51-1/4" L X 29-1/4" W X 51-3/4" H	581 LBS	
BATTERY			
	19-5/16" L X 13" W X 10-5/8" H	65 LBS	8026371
	34-1/8" L X 19-7/8" W X 15-1/4" H	160 LBS	SC-A-362244
M42 ROCKET MOTOR CNTR	180-3/8" L X 46-9/16" W X 55-11/16" H	6,520 LBS	9031177

- F. LADING WILL NOT BE SECURED BY CHAINS AND/OR LOAD BINDERS IN LIEU OF SPECIFIED DUNNAGE.
- G. WHEN ANY STRAP IS SEALED AT AN END-OVER-END LAP JOINT, A MINIMUM OF TWO (2) SEALS WITH TWO (2) CRIMPS PER SEAL MUST BE USED.
CAUTION: EXERCISE CARE DURING TENSIONING TO PREVENT DAMAGE TO CONTAINERS.
- H. IF TRAILER STAKE POCKETS AND/OR ANCHOR DEVICES ARE NOT PROPERLY POSITIONED TO RECEIVE TWO INCH (2") STRAPPING AS SHOWN, OR IF POCKETS AND/OR ANCHOR DEVICES ARE NOT EQUAL TO OR GREATER THAN STRENGTH OF THE DOWN STRAPS, THE STRAPS MAY BE APPLIED TO FORM A COMPLETE LOOP WHICH ENCOMPASSES BOTH LADING AND TRAILER FRAME AND/OR BED.
CAUTION: AVOID TRAILER WHEELS, FIFTH WHEEL PLATE, CONTROLS AND OTHER APPURTENANTS. USE EDGE PROTECTORS ON ALL SHARP EDGES.
- J. IF EDGE PROTECTORS FOR 2" STRAPPING ARE NOT COMMERCIALY AVAILABLE, THEY MAY BE FORMED FROM 18 (MIN) GAGE SHEET STEEL 9" LONG X 6" WIDE.
- K. THIS LOAD INCLUDES ICC CLASS "A" AND "B" EXPLOSIVE ITEMS. SPECIFIED OUTLOADING PROCEDURES CAN ALSO BE UTILIZED FOR THE SHIPMENT OF THE DEPICTED CONTAINERS WHEN THEY ARE EMPTY OR LOADED WITH AN ITEM WHICH IS IDENTIFIED DIFFERENTLY BY NOMENCLATURE THEN THE ITEM DESIGNATED WITHIN THE DRAWING TITLE. NOTE: 18" X 32" PLACARD BOARDS MUST BE PROVIDED AS REQUIRED BY LAW AND/OR REGULATION. **CAUTION:** PLACARD BOARDS AND BOARD MOUNTING BRACKETS MUST NOT BE NAILED TO LADING. LIKEWISE, LOAD COVERING TARPULINS MUST NOT BE NAILED TO LADING.
- L. LOADING OF THESE ITEMS IS RESTRICTED TO ONE (1) LAYER IN HEIGHT.

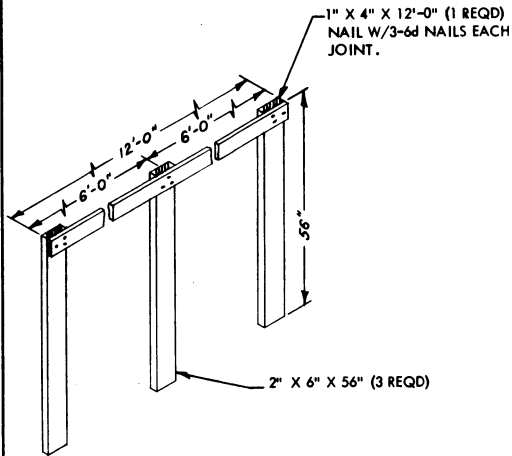
BILL OF MATERIAL		
LUMBER	LINEAL FEET	BOARD FEET
1" X 4"	18	6
2" X 4"	62	42
2" X 6"	99	99
NAILS	NO. REQD	POUNDS
6d (2")	15	-
12d (3-1/4")	186	3
20d (4")	152	5-1/2
STRAPPING, STEEL, 1-1/4" X .035-----45' REQD----- 7 LBS		
STRAPPING, STEEL, 2" X .050-----162' REQD-----54 LBS		
EDGE PROTECTORS----- 7 REQD----- 2 LBS		
STRAP ANCHOR PLATES----- 2 REQD----- 1 LB		
NO. 27 RING-LOCK NAILS----- 12 REQD		
ANTI-CHAFING MATERIAL----- AS REQD		

MATERIAL SPECIFICATIONS

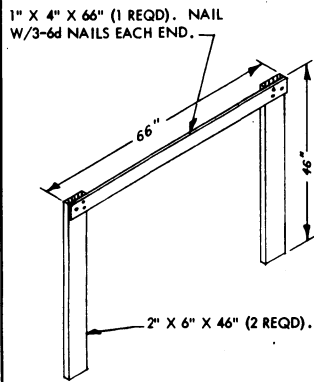
LUMBER: SEE PARAGRAPH 8400, ORDM 3-4, VOL 3.
 NAILS: COMMON, CEMENT COATED, FED SPEC FF-N-105.
 ALT: ANNULAR-RING TYPE NAIL OF SAME SIZE.
 STRAPPING, STEEL: TYPE 1, CLASS "A" OR "C", FED SPEC QQ-S-781
 FOR FSN SEE SB-38-100.
 ANTI-CHAFING MATERIAL: NEUTRAL BARRIER MATERIAL MIL-B-121, OR EQUAL.
 STRAP ANCHOR PLATES: SIGNODE OR EQUAL.

LOAD AS SHOWN

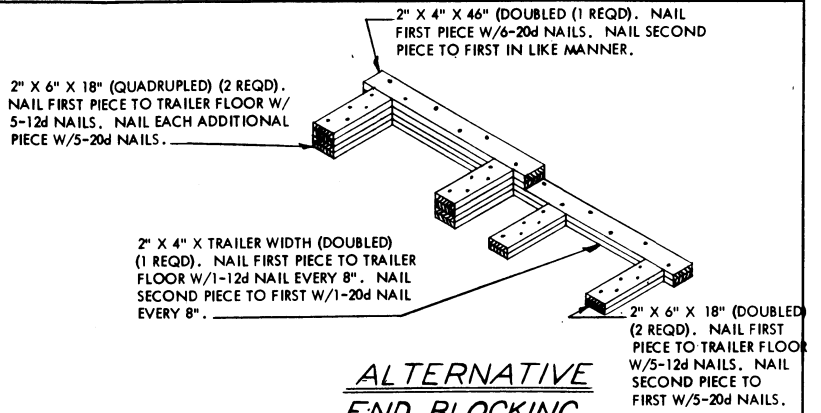
ITEM	QUANTITY	WEIGHT (APPROX)
M410 CNTR	1	4,606 LBS
M409 CNTR	1	3,170 LBS
M31 CNTR	1	1,050 LBS
M32 CNTR	1	644 LBS
BATTERY	1	65 LBS
BATTERY	1	160 LBS
M42 ROCKET MOTOR	1	6,520 LBS
DUNNAGE		440 LBS
TOTAL WEIGHT		16,655 LBS (APPROX)



ANTI-CHAFING ASSEMBLY "A"

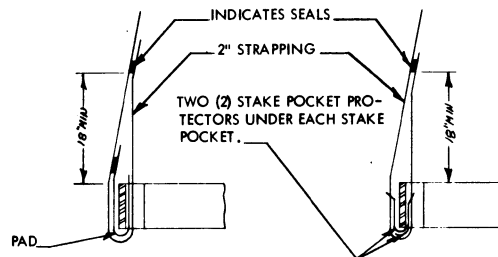


ANTI-CHAFING ASSEMBLY "B"



ALTERNATIVE END BLOCKING

MAY BE USED AT REAR OF LADING WHEN TRAILER IS 35'-0" OR GREATER IN LENGTH.



DETAIL "A"

METHOD OF INSTALLING 2" STRAPPING AND PAD AT STAKE POCKET.

DETAIL "B"

METHOD OF INSTALLING 2" STRAPPING AND STAKE POCKET PROTECTORS (ALT PAD).