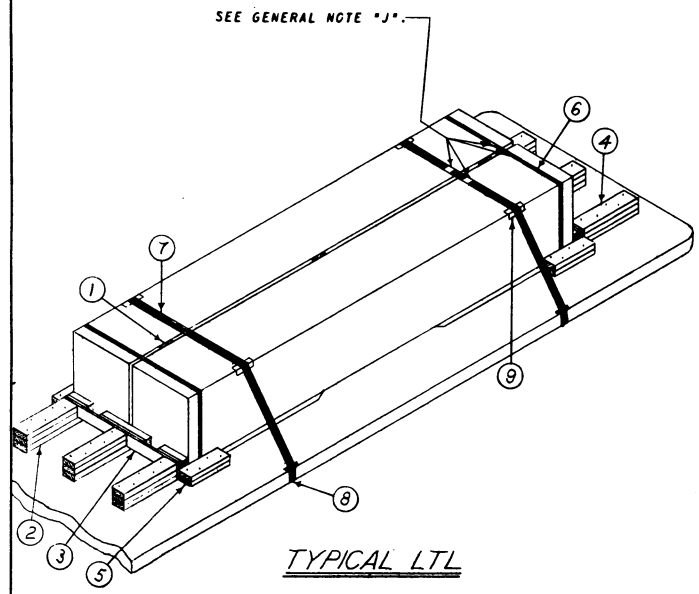


APPROVED
 BUREAU OF EXPLOSIVES
A. F. Grossmuck
 INSPECTOR
 DATE 3/5/62



TYPICAL LTL

KEY NUMBERS (LTL)

- ① 1" x 4" x 28 1/2" (3 REQD). POSITION BETWEEN CONTAINERS AS SHOWN.
- ② 2" x 6" x 30" (6 REQD). EXTEND 3" UNDER CONTAINER. NAIL TO TRAILER FLOOR W/5-12d NAILS.
- ③ END BLOCKING (2 REQD). SEE DETAIL "B". TOENAIL TO ② W/2-12d NAILS EACH JOINT. FABRICATE TO SUIT LADING WIDTH.
- ④ 2" x 5" x 24" (DOUBLED)(6 REQD). NAIL FIRST PIECE TO ② W/5-20d NAILS. NAIL SECOND PIECE TO FIRST IN LIKE MANNER.
- ⑤ 2" x 5" x 24" (DOUBLED)(4 REQD). NAIL FIRST PIECE TO TRAILER FLOOR W/6-12d NAILS. NAIL SECOND PIECE TO FIRST IN LIKE MANNER.
- ⑥ STEEL STRAPPING, 1 1/2" x .035" x 14'-6" (2 REQD).
- ⑦ STEEL STRAPPING, 2" x .050" x 15'-6" (2 REQD).
- ⑧ PAD, 2" x .050" STRAP 18" LONG. POSITION UNDER AND SEAL TO ⑦. SEE DETAIL "C" (4 REQD).
 ALTERNATE: SIGNODE NO. 1 STAKE POCKET PROTECTORS (8 REQD). TWO (2) USED UNDER EACH STAKE POCKET WITH ⑦. SEE DETAIL "D".
- ⑨ EDGE PROTECTORS FOR 2" STRAPPING (4 REQD). SEE GENERAL NOTE "H".

GENERAL NOTES

- A. LOAD AS SHOWN IS BASED ON FLAT BED TRAILER 35'-0" LONG x 9'-0" WIDE WITH WOOD OR WOOD AND METAL FLOOR. TRAILERS WITH ALL METAL FLOORS WILL NOT BE USED.
 CAUTION: LADING HEIGHT - 7'-4 1/2".
- B. GROSS WEIGHT AND AXLE DISTRIBUTION OF WEIGHT WILL BE IN ACCORDANCE WITH PARAGRAPH 9,345.4, ORDM 3-4, VOL 3.
- C. SELECTION OF VEHICLE TO BE USED TO TRANSPORT GUIDED MISSILE AMMUNITION AND/OR COMPONENTS THEREOF, MUST COMPLY WITH AR 55-355, CHAPTER 213 FOR EXPLOSIVES OR OTHER DANGEROUS ARTICLES, IN FULL.
- D. NOTICE: SHIPMENTS WILL BE POSITIONED ON THE TRAILER CONSISTENT WITH STATE WEIGHT LAWS. THE NUMBER OF UNITS MAY BE ADJUSTED TO FIT THE DIMENSIONS OF THE VEHICLE CONCERNED OR THE QUANTITY TO BE SHIPPED; HOWEVER, THE APPROVED METHODS CONTAINED HERETIN FOR FULL OR PARTIAL TRUCKLOAD MUST BE FOLLOWED FOR BLOCKING, BRACING AND STAYING OF THIS ITEM.
- E. FOR DETAIL OF M13 CONTAINER SEE DRAWING NO. 9026310. FOR DETAIL OF M13A1 CONTAINER SEE DRAWING NO. 9030062.
 CONTAINER DIMENSIONS - 177" LONG x 25 1/2" WIDE x 31 1/2" HIGH.
 GROSS WEIGHT - M13 CONTAINER 1,993 POUNDS (APPROX)
 M13A1 CONTAINER, 1,949 POUNDS (APPROX).
- F. LADING WILL NOT BE SECURED BY CHAINS AND/OR LOAD BINDERS IN LIEU OF SPECIFIED DUNNAGE.
- G. THE WORDS "ANTI-SKID PLATES" WILL BE STENCILED IN ONE INCH (1") LETTERS ON BOTH SIDES OF THE CONTAINERS TO SHOW THE LOCATION OF THESE PLATES.
- H. IF EDGE PROTECTORS FOR 2" STRAPPING ARE NOT COMMERCIALY AVAILABLE, THEY MAY BE FORMED FROM 18 (MIN) GAGE SHEET STEEL 9" LONG x 6" WIDE.
- J. ALL 2" STRAPPING APPLIED IN TWO (2) PIECES AND ALL 1 1/2" STRAPPING WILL BE SEALED WITH TWO (2) SEALS AND TWO (2) CRIMPS PER SEAL.
- K. THIS ITEM IS AN ICC CLASS "B" EXPLOSIVE. PROCEDURES SHOWN HEREON ARE APPLICABLE FOR THE SHIPMENT OF CONTAINERS WITH INERT LOADED, EMPTY OR PRACTICE MOTORS AND OF EMPTY CONTAINERS.

BILL OF MATERIAL (TL)		
LUMBER	LINEAL FEET	BOARD FEET
1" x 4"	125	42
2" x 4"	22	15
2" x 5"	112	112
NAILS	NO. REQD	POUNDS
5d (2")	56	1/2
10d (3")	56	1
12d (3-1/4")	196	3-1/2
20d (4")	95	3 1/2
STRAPPING, STEEL, 1 1/2" x .035" - 299' REQD -		42 LBS
STRAPPING, STEEL, 2" x .050" - 186' REQD -		52 LBS
ANTI-SKID PLATES - 49 REQD -		12 LBS
EDGE PROTECTORS - 12 REQD -		3 LBS

MATERIAL SPECIFICATIONS

LUMBER: SEE PARAGRAPH 9,400, ORDM 3-4, VOL 3.
 NAILS: COMMON, CEMENT COATED, FED SPEC FF-N-105.
 ALT: ANNULAR-RING TYPE NAIL OF SAME SIZE.
 STRAPPING, STEEL: TYPE 1, CLASS "A" OR "C", FED SPEC QQ-S-781. FOR FSM SEE 58-39-100.
 ANTI-SKID PLATES: SIGNODE NO. 1 OR EQUAL.

LOAD AS SHOWN

ITEM	QUANTITY	WEIGHT
ROCKET MOTOR, M13 CNTR	19	33,894 LBS * (APPROX).
DUNNAGE		551 LBS
TOTAL WEIGHT		34,445 LBS

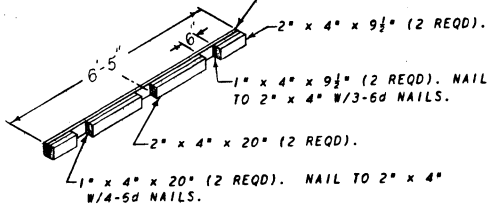
* ROCKET MOTOR, M13A1 CNTR - 35,092 LBS (APPROX).

LOADING & BRACING (TL & LTL) ON FLAT BED TRAILER OF ROCKET MOTOR, M5 AND/OR M5E1, PACKED ONE PER WOODEN SHIPPING CONTAINER, M13 AND/OR M13A1, FOR THE NIKE-AJAX AND NIKE-HERCULES GUIDED MISSILES

DRAFTER GBF	TRACER	ENGINEER DIW/JB	SUBMITTED
CHECKER RHA/GWP	CHECKER AAL	ENGINEER	<i>Richard F. ...</i> COLONEL ORN. CORPS U.S.A.
REVISIONS			EXAMINED <i>John Taylor</i> ORN. CORPS U.S.A.
5	25 OCT 61	<i>Condon W. ...</i>	APPROVED BY ORDER OF THE CHIEF OF ORDNANCE <i>Condon W. ...</i> ORN. CORPS U.S.A.
ORDNANCE CORPS U.S.A.			
15 NOVEMBER 1954			
CLASS	DIVISION	DRAWING	FILE
19	48	5115	GM1A15

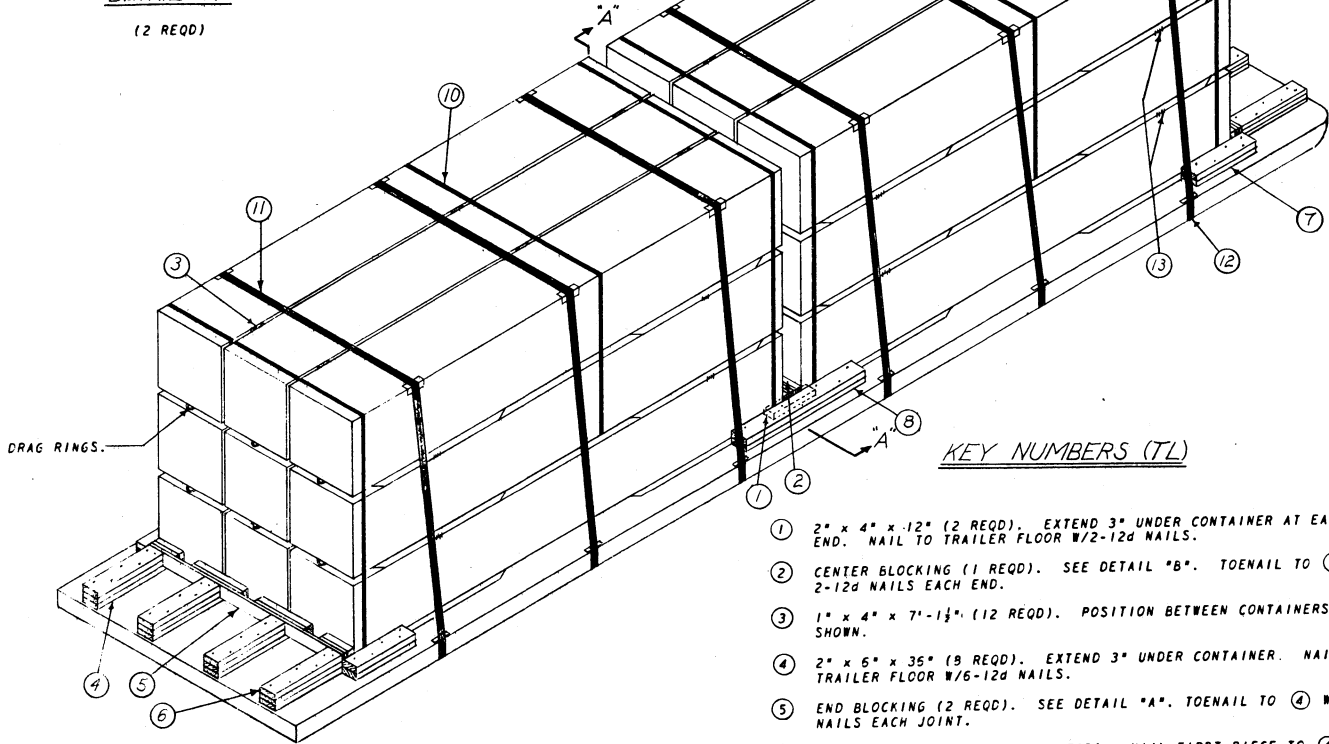
DO NOT SCALE

1" x 4" MATERIAL (1 REQD). NAIL TO 1" x 4" x 9 1/2" W/3-10d NAILS AND TO 1" x 4" x 20" W/4-10d NAILS.



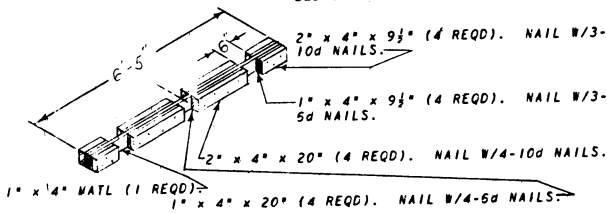
DETAIL "A"
(2 REQD)

SEE GENERAL NOTE "J".



ISOMETRIC VIEW

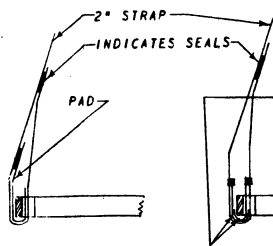
35'-0" LONG x 8'-0" WIDE FLAT BED TRAILER



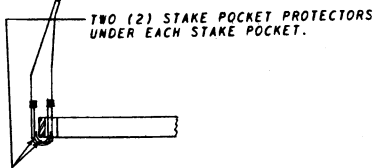
DETAIL "B"
(1 REQD)

KEY NUMBERS (TL)

- ① 2" x 4" x 12" (2 REQD). EXTEND 3" UNDER CONTAINER AT EACH END. NAIL TO TRAILER FLOOR W/2-12d NAILS.
 - ② CENTER BLOCKING (1 REQD). SEE DETAIL "B". TOENAIL TO ① W/ 2-12d NAILS EACH END.
 - ③ 1" x 4" x 7'-1 1/2" (12 REQD). POSITION BETWEEN CONTAINERS AS SHOWN.
 - ④ 2" x 6" x 35" (8 REQD). EXTEND 3" UNDER CONTAINER. NAIL TO TRAILER FLOOR W/6-12d NAILS.
 - ⑤ END BLOCKING (2 REQD). SEE DETAIL "A". TOENAIL TO ④ W/2-12d NAILS EACH JOINT.
 - ⑥ 2" x 6" x 30" (DOUBLED)(8 REQD). NAIL FIRST PIECE TO ④ W/6-20d NAILS. NAIL SECOND PIECE TO FIRST IN LIKE MANNER.
 - ⑦ 2" x 6" x 36" (DOUBLED)(4 REQD). NAIL FIRST PIECE TO TRAILER FLOOR W/9-12d NAILS. NAIL SECOND PIECE TO FIRST IN LIKE MANNER.
 - ⑧ 2" x 6" x 72" (DOUBLED)(2 REQD). NAIL FIRST PIECE TO TRAILER FLOOR W/18-12d NAILS. NAIL SECOND PIECE TO FIRST IN LIKE MANNER.
 - ⑨ STEEL STRAPPING, 1 1/2" x .035" x 20'-0" (12 REQD).
 - ⑩ STEEL STRAPPING, 1 1/2" x .035" x 24'-0" (2 REQD).
 - ⑪ STEEL STRAPPING, 2" x .050" x 28'-0" (6 REQD).
 - ⑫ PAD, 2" x .050" STRAP 19" LONG. POSITION UNDER AND SEAL TO ⑪. SEE DETAIL "C" (12 REQD).
- ALTERNATE: SIGNODE NO. 1 STAKE POCKET PROTECTORS (24 REQD). TWO (2) USED UNDER EACH STAKE POCKET WITH ⑪. SEE DETAIL "D".
- ⑬ ANTI-SKID PLATES (48 REQD). POSITION UNDER SKIDS OF CONTAINERS IN SECOND AND THIRD LAYERS. 4 REQD PER CONTAINER. SEE GENERAL NOTE "G".
 - ⑭ EDGE PROTECTORS FOR 2" STRAPPING (12 REQD). SEE GENERAL NOTE "H".

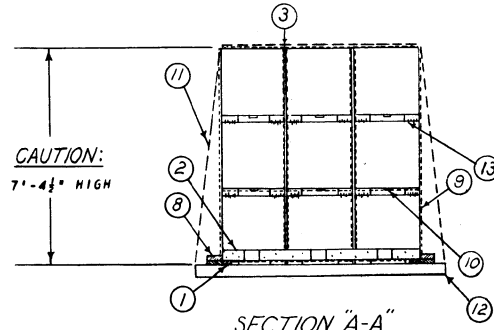


DETAIL "C"
METHOD OF THREADING STRAP AND PAD AT STAKE POCKET



DETAIL "D"
METHOD OF INSTALLING STAKE POCKET PROTECTORS (ALTERNATE PAD)

CAUTION:
7'-4 1/2" HIGH



SECTION "A-A"