

APPROVED BY U.S. COAST GUARD <i>[Signature]</i> DATE 7/31/79	APPROVED BY BUREAU OF EXPLOSIVES <i>[Signature]</i> SUPERVISOR, MILITARY & INTERMODAL SERVICES DATE 8/21/79
---	---

LOADING AND BRACING WITH WOODEN DUNNAGE IN COMMERCIAL CONTAINERS OF PALLETIZED UNITS OF 81MM MORTAR AMMUNITION (36-BOX PALLET UNIT)

THE DEPICTED WOODEN DUNNAGE METHOD CAN BE APPLIED TO ANY 8'-6" HIGH COMMERCIAL INTERMODAL 20-FOOT CONTAINER, ALTHOUGH THE DUNNAGE DIMENSIONS HAVE BEEN GIVEN FOR A 92" WIDE BY 95" * HIGH (INSIDE DIMENSIONS) CONTAINER.

LOADING AND BRACING SPECIFICATIONS AS DELINEATED HEREIN ARE ADEQUATE FOR SHIPMENTS TO BE MOVED BY ANY SURFACE MODE OF TRANSPORT (MOTOR, RAIL, AND WATER).

REQUIREMENTS CITED WITHIN THE BUREAU OF EXPLOSIVES PAMPHLET 6C APPLY WHEN THE SHIPMENT MOVES BY TRAILER/CONTAINER-ON-FLAT-CAR (T/COFC). SPECIAL T/COFC NOTES FOLLOW.

- A. A LOADED CONTAINER MUST BE ON A CHASSIS EQUIPPED WITH TWO BOGIE ASSEMBLIES WHEN BEING MOVED IN TOFC SERVICE.
- B. THE LOAD LIMIT OF A T/COFC RAIL CAR MUST NOT BE EXCEEDED, NOR WILL A CAR BE LOADED SO THAT THE TRUCK UNDER ONE END OF THE CAR CARRIES MORE THAN ONE-HALF OF THE LOAD LIMIT FOR THAT CAR.

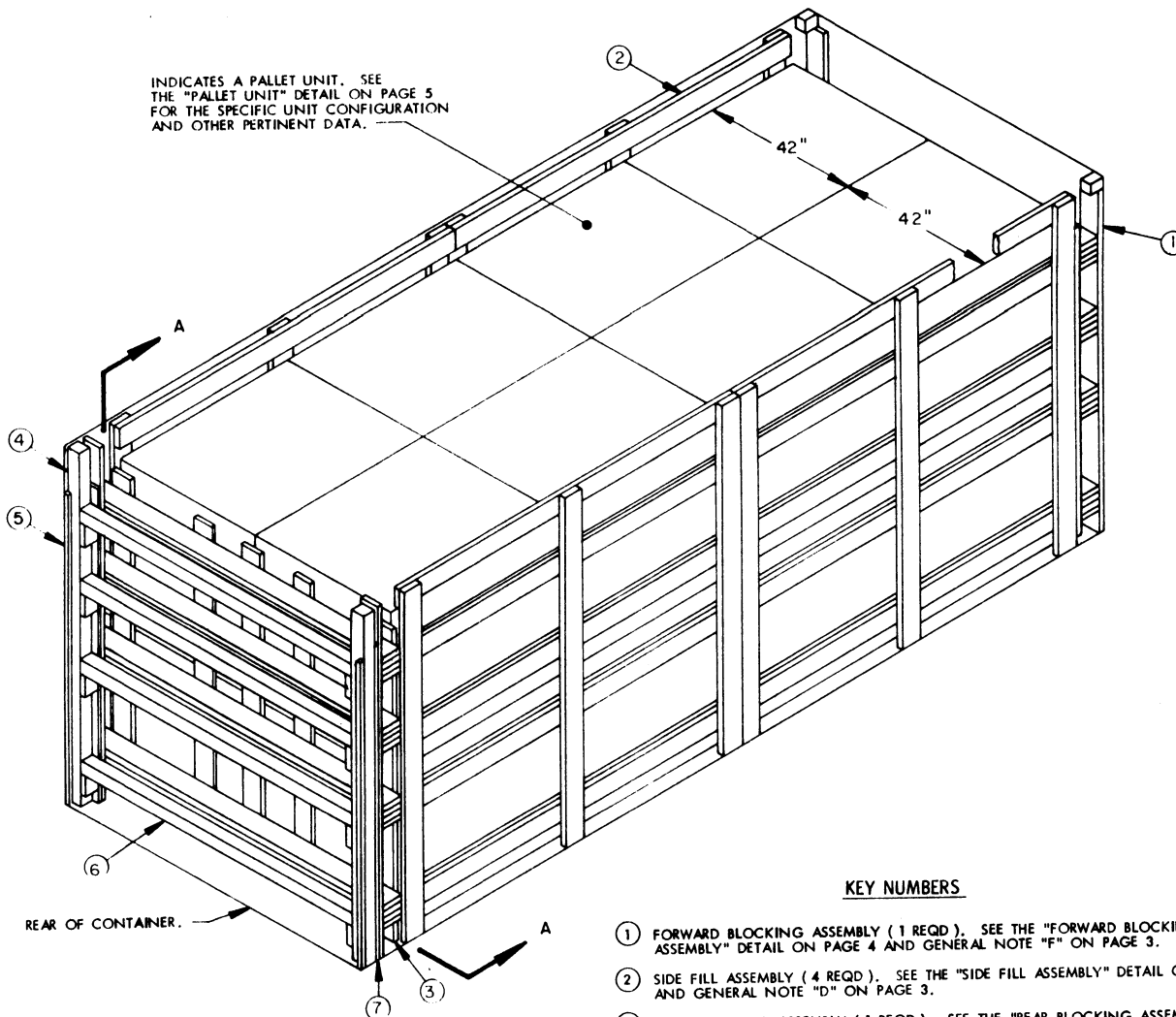
DURING INTRASTATE AND/OR INTERSTATE MOVES BY MOTOR CARRIER, A PROPER CHASSIS/MODIFIED FLAT BED TRAILER MUST BE USED TO PRECLUDE VIOLATION OF ONE OR MORE "WEIGHT LAWS" APPLICABLE TO THE STATE OR STATES INVOLVED.

* CAUTION: ONLY CONTAINERS WITH A MINIMUM INSIDE HEIGHT DIMENSION OF 93" AND A MINIMUM DOOR OPENING HEIGHT DIMENSION OF 90" CAN BE USED TO ACHIEVE THE TWO-HIGH PALLET UNIT LOAD CONFIGURATION DEPICTED HEREIN.

DO NOT SCALE

REVISIONS		DRAFTSMAN	PROJ ENG
		Y.S. DAK	WRE/NEW
		CHECKER	LOG ENGINE OFFICE
		GRG	Wm F. [Signature]
APPROVED, U. S. ARMY ARMAMENT MATERIEL READINESS COMMAND			
<i>[Signature]</i>			
APPROVED BY ORDER OF COMMANDING GENERAL, U. S. ARMY MATERIEL DEVELOPMENT AND READINESS COMMAND (DARCOM)			
<i>[Signature]</i>			
U. S. ARMY DEFENSE AMMUNITION CENTER AND SCHOOL			
U. S. ARMY DARCOM DRAWING			
AUGUST 1979			
DEF AMMO CEN & SCH DWG NO.			
D - SARAC-4412			

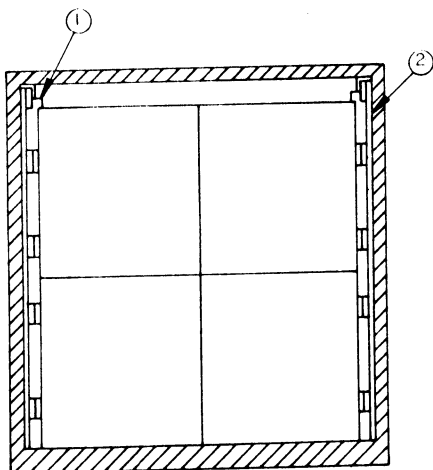
INDICATES A PALLET UNIT. SEE THE "PALLET UNIT" DETAIL ON PAGE 5 FOR THE SPECIFIC UNIT CONFIGURATION AND OTHER PERTINENT DATA.



ISOMETRIC VIEW

KEY NUMBERS

- ① FORWARD BLOCKING ASSEMBLY (1 REQD). SEE THE "FORWARD BLOCKING ASSEMBLY" DETAIL ON PAGE 4 AND GENERAL NOTE "F" ON PAGE 3.
- ② SIDE FILL ASSEMBLY (4 REQD). SEE THE "SIDE FILL ASSEMBLY" DETAIL ON PAGE 5 AND GENERAL NOTE "D" ON PAGE 3.
- ③ REAR BLOCKING ASSEMBLY (1 REQD). SEE THE "REAR BLOCKING ASSEMBLY" DETAIL ON PAGE 4 AND GENERAL NOTE "F" ON PAGE 3.
- ④ DOOR POST VERTICAL (2 REQD). SEE THE "DOOR POST VERTICAL" DETAIL AND "DETAIL B" ON PAGE 7.
- ⑤ DOOR POST VERTICAL RETAINER (2 REQD). SEE THE "DOOR POST VERTICAL RETAINER" DETAILS ON PAGE 6 AND "DETAIL A" ON PAGE 7. NAIL TO THE DOOR POST VERTICAL W/4-10d NAILS.
- ⑥ DOOR SPANNER, 4" X 4" MATERIAL, CUT TO A LENGTH THAT WILL PROVIDE FOR A DRIVE FIT (REF: 7"-1-3/8") (4 REQD). TOENAIL TO THE 4" X 4" DOOR POST VERTICAL PIECES W/2-12d NAILS AT EACH END. SEE THE "BEVEL-CUT" DETAIL ON PAGE 7. AFTER INSTALLING THE BOTTOM AND TOP DOOR SPANNERS, THE FILL MATERIAL, PIECE MARKED ⑦, IS TO BE INSTALLED.
- ⑦ FILL MATERIAL, 6" WIDE BY 7'-0" LONG MATERIAL (AS REQD). NAIL EACH PIECE TO THE REAR BLOCKING ASSEMBLY AND/OR LAMINATE TOGETHER W/8 NAILS OF A SUITABLE SIZE (10d FOR 2" MATERIAL). **CAUTION:** DO NOT NAIL TO THE DOOR POST VERTICALS, PIECES MARKED ④.



SECTION A-A

(GENERAL NOTES CONTINUED)

GENERAL NOTES

L. RECOMMENDED SEQUENTIAL LOADING PROCEDURES:

1. PREFABRICATE ONE FORWARD BLOCKING ASSEMBLY, FOUR SIDE FILL ASSEMBLIES, ONE REAR BLOCKING ASSEMBLY, AND NAIL A DOOR POST VERTICAL RETAINER TO EACH DOOR POST VERTICAL, ONE RIGHT HAND AND ONE LEFT HAND.
2. INSTALL FORWARD BLOCKING ASSEMBLY.
3. INSTALL ONE SIDE FILL ASSEMBLY AND LOAD TWO PALLET UNITS.
4. REPEAT STEP 3.
5. LOAD FOUR PALLET UNITS.
6. REPEAT STEP 3.
7. REPEAT STEP 3.
8. REPEAT STEP 5.
9. INSTALL REAR BLOCKING ASSEMBLY.
10. INSTALL THE TWO DOOR POST VERTICAL ASSEMBLIES (ONE RIGHT HAND AND ONE LEFT HAND).
11. INSTALL TWO DOOR SPANNER PIECES (ONE AT THE LOWEST POSITION AND ONE AT THE UPPERMOST POSITION).
12. INSTALL THE SOLID FILL TYPE LOAD-BLOCKING MATERIAL.
13. INSTALL THE REMAINING TWO DOOR SPANNER PIECES STARTING WITH THE LOWEST AND WORKING UPWARD.

- A. THIS DOCUMENT HAS BEEN PREPARED AND ISSUED IN ACCORDANCE WITH AR 740-1 AND AUGMENTS TM 743-200-1 (CHAPTER 5).
- B. THE SPECIFIED OUTLOADING PROCEDURE IS APPLICABLE TO A 36-BOX PALLET UNIT OF 81MM MORTAR AMMUNITION. SUBSEQUENT REFERENCE TO PALLET UNIT MEANS THE PALLETIZED UNIT WITH AMMUNITION ITEMS. SEE PAGE 5 FOR DETAILS OF THE PALLET UNIT. CAUTION: REGARDLESS OF THE QUANTITY OF UNITS TO BE SHIPPED, THE "MAXIMUM GROSS WEIGHT" OF 44,800 POUNDS MUST NOT BE EXCEEDED.
- C. THE LOAD AS SHOWN IS BASED ON A 4,700 POUND 20' LONG BY 8' WIDE BY 8'-6" HIGH INTERMODAL COMMERCIAL CONTAINER WITH INSIDE DIMENSIONS OF 19'-4" LONG BY 92" WIDE BY 93" HIGH. CAUTION: ONLY CONTAINERS WITH A MINIMUM INSIDE HEIGHT DIMENSION OF 93" CAN BE USED TO ACHIEVE THE TWO-HIGH PALLET UNIT LOAD CONFIGURATION DEPICTED HEREIN. THE LOAD IS DESIGNED FOR TRAILER/CONTAINER-ON-FLAT-CAR (T/COFC) SHIPMENT. HOWEVER, THE LOAD AS DESIGNED CAN ALSO BE MOVED BY OTHER SURFACE MODES OF TRANSPORT. NOTICE: OTHER CONTAINERS OF THE SAME DESIGN CONFIGURATION CAN BE USED.
- D. WHEN LOADING PALLET UNITS, THEY ARE TO BE POSITIONED SO AS TO ACHIEVE A TIGHT LOAD (TIGHT AGAINST THE FORWARD AND SIDE DUNNAGE ASSEMBLIES). ALTHOUGH A TOTAL OF ONE AND ONE-HALF INCHES (1-1/2") OF UNBLOCKED SPACE ACROSS THE WIDTH OF A LOAD BAY IS PERMITTED, LATERAL VOIDS WITHIN THE LOAD ARE TO BE HELD TO A MINIMUM. EXCESSIVE SLACK CAN BE ELIMINATED FROM A LOAD BY LAMINATING ADDITIONAL PIECES OF APPROPRIATE THICKNESS TO THE HORIZONTAL PIECES ON A SIDE FILL ASSEMBLY. NAIL EACH ADDITIONAL PIECE TO THE HORIZONTAL PIECE W/1 APPROPRIATELY SIZED NAIL EVERY 12".
- E. DUNNAGE LUMBER SPECIFIED IS OF A NOMINAL SIZE. FOR EXAMPLE, 1" X 6" MATERIAL IS ACTUALLY 3/4" THICK BY 5-1/2" WIDE AND 2" X 6" MATERIAL IS ACTUALLY 1-1/2" THICK BY 5-1/2" WIDE.
- F. A STAGGERED NAILING PATTERN WILL BE USED WHEREVER POSSIBLE WHEN NAILS ARE DRIVEN INTO JOINTS OF DUNNAGE ASSEMBLIES OR WHEN LAMINATING DUNNAGE. ADDITIONALLY, THE NAILING PATTERN FOR AN UPPER PIECE OF LAMINATED DUNNAGE WILL BE ADJUSTED AS REQUIRED SO THAT A NAIL FOR THAT PIECE WILL NOT BE DRIVEN THROUGH ONTO OR RIGHT BESIDE A NAIL IN A LOWER PIECE.
- G. IN SOME CONTAINERS, SUCH AS SOME ALL STEEL CONTAINERS, THERE IS A SLOT AT THE CORNERS OF THE FORWARD WALL. A PIECE OF DUNNAGE MATERIAL MUST BE LAMINATED TO THE BUFFER PIECES ON THE FORWARD BLOCKING ASSEMBLY TO PROVIDE A FLAT SURFACE FOR THE 2" X 6" BUFFER PIECES. A PIECE OF 2" X 4", 2" X 3", OR A SPECIAL WIDTH PIECE CUT TO FIT CAN BE USED. THIS FILL PIECE WILL BE NAILED WITH ONE APPROPRIATELY SIZED NAIL EVERY 12". THIS PIECE IS NOT REQUIRED WHEN THE FRONT WALL OF THE CONTAINER IS SMOOTH AND FLAT.
- H. CAUTION: DO NOT NAIL DUNNAGE MATERIAL TO THE CONTAINER WALLS OR FLOOR. ALL NAILING WILL BE WITHIN THE DUNNAGE.
- J. PORTIONS OF THE CONTAINERS DEPICTED WITHIN THIS DRAWING, SUCH AS ONE OF THE SIDE WALLS, HAVE NOT BEEN SHOWN IN THE LOAD VIEWS FOR CLARITY PURPOSES.
- K. TO MAKE LOADING EASIER, TO HELP ACHIEVE A TIGHT LOAD ACROSS A CONTAINER, AND TO PREVENT UNACCEPTABLE DAMAGE TO LADING UNITS WHEN LOADING A CONTAINER, A SLIP-SHEET CAN BE USED EFFECTIVELY AS A "SHOE-HORN" TYPE DEVICE. THE SLIP-SHEET WILL PROVIDE A SMOOTH SURFACE THAT WILL PREVENT UNIT STRAPS AND/OR DUNNAGE PIECES FROM INTERLOCKING OR CATCHING ON OTHER PROJECTIONS WHEN LATERALLY ADJACENT LADING UNITS ARE BEING LOADED. A SLIP-SHEET WILL BE USED AFTER ONE-HALF OF A STACK IS LOADED WITH ONE OF ITS SIDES IN TIGHT CONTACT AT ONE SIDE OF THE CONTAINER. THE SLIP-SHEET IS TO BE PLACED AGAINST THE OTHER SIDE OF THE HALF-STACK BEFORE THE LAST HALF OF THE STACK IS LOADED. AFTER A STACK IS COMPLETED, THE SLIP-SHEET IS TO BE REMOVED FOR SUBSEQUENT USE WITH THE NEXT STACK. A SLIP-SHEET OF SUITABLE SIZE CAN BE MADE FROM A SHEET OF 1/8" TEMPERED HARDBOARD (MASONITE) OR FROM A SHEET OF ANY OTHER MATERIAL THAT WILL SATISFY THE REQUIREMENT.

(CONTINUED AT LEFT)

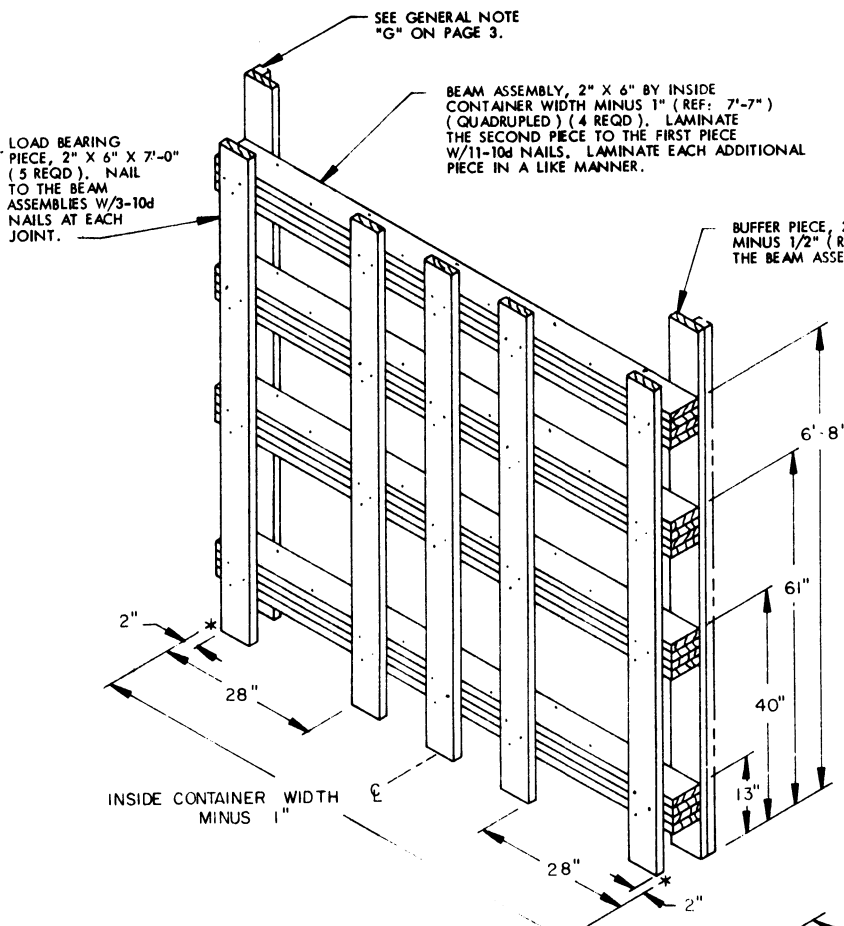
BILL OF MATERIAL		
LUMBER	LINEAR FEET	BOARD FEET
1" X 6"	154	77
2" X 4"	4	3
2" X 6"	614	614
4" X 4"	45	60
NAILS	NO. REQD	POUNDS
6d (2")	144	1
10d (3")	636	9-3/4
12d (3-1/4")	16	1/2
DOOR POST VERTICAL RETAINER ----- 2 REQD ----- 64 LBS		

MATERIAL SPECIFICATIONS

- LUMBER ----- : TM 743-200-1 (DUNNAGE LUMBER) AND FED SPEC MM-L-751.
 NAILS ----- : FED SPEC FF-N-105; COMMON.
 STEEL, STRUCTURAL - : FED SPEC QQ-S-741; SQUARE STRUCTURAL TUBING AND ROLLED PLATE.

LOAD AS SHOWN

ITEM	QUANTITY	WEIGHT (APPROX)
PALLET UNIT -----	16 -----	32,128 LBS
DUNNAGE -----	-----	1,584 LBS
CONTAINER -----	-----	4,700 LBS
TOTAL WEIGHT -----		38,412 LBS

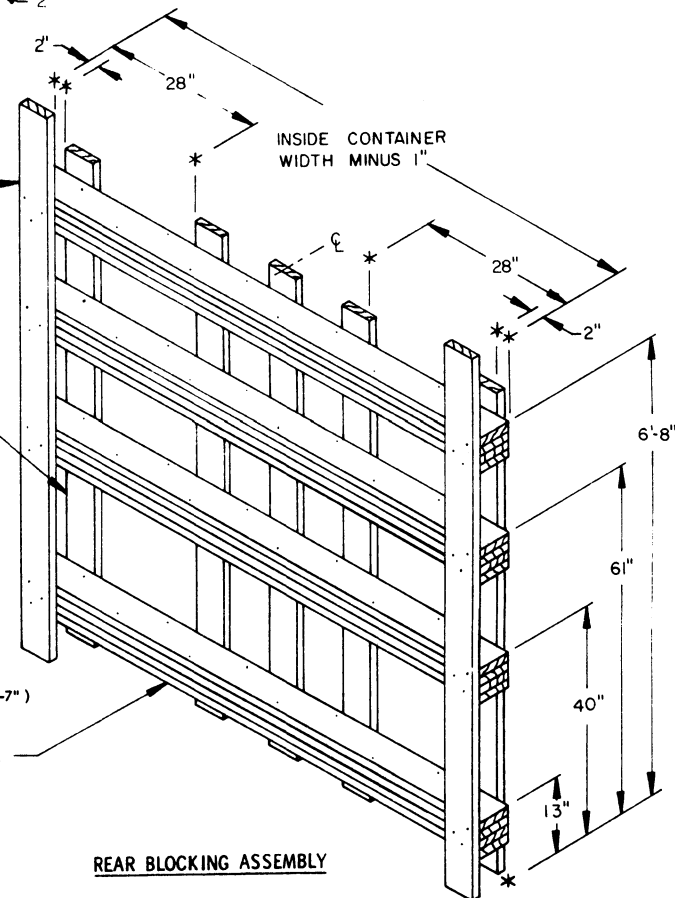


FORWARD BLOCKING ASSEMBLY

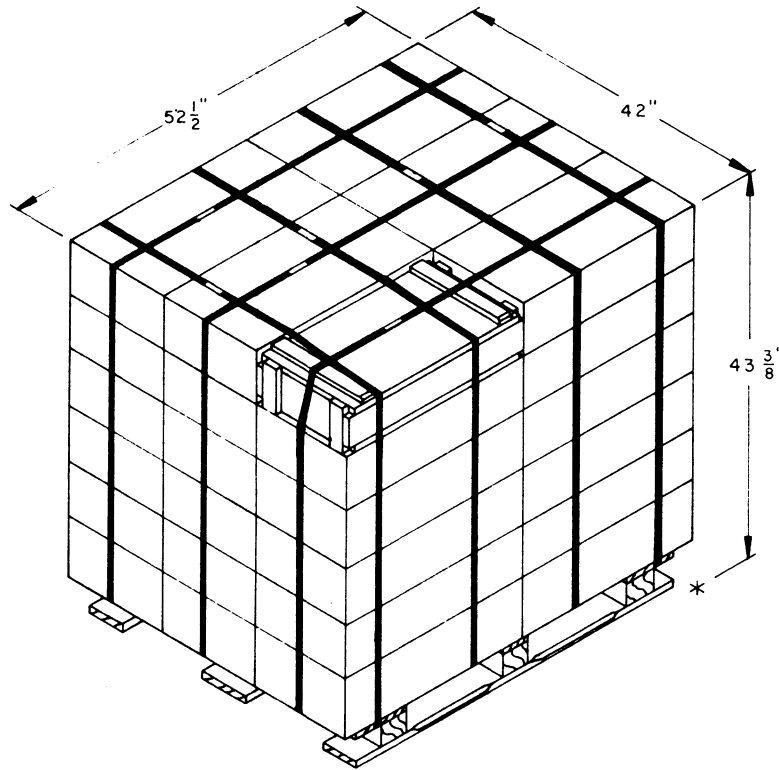
BUFFER PIECE, 2" X 6" BY INSIDE CONTAINER HEIGHT MINUS 1/2" (REF: 7'-10-1/2") (2 REQD). NAIL TO THE BEAM ASSEMBLIES W/3-10d NAILS AT EACH JOINT.

LOAD BEARING PIECE, 2" X 6" X 7'-0" (5 REQD). NAIL TO THE BEAM ASSEMBLIES W/3-10d NAILS AT EACH JOINT.

BEAM ASSEMBLY, 2" X 6" BY INSIDE CONTAINER WIDTH MINUS 1" (REF: 7'-7") (QUADRUPLED) (4 REQD). LAMINATE THE SECOND PIECE TO THE FIRST PIECE W/11-10d NAILS. LAMINATE EACH ADDITIONAL PIECE IN A LIKE MANNER.

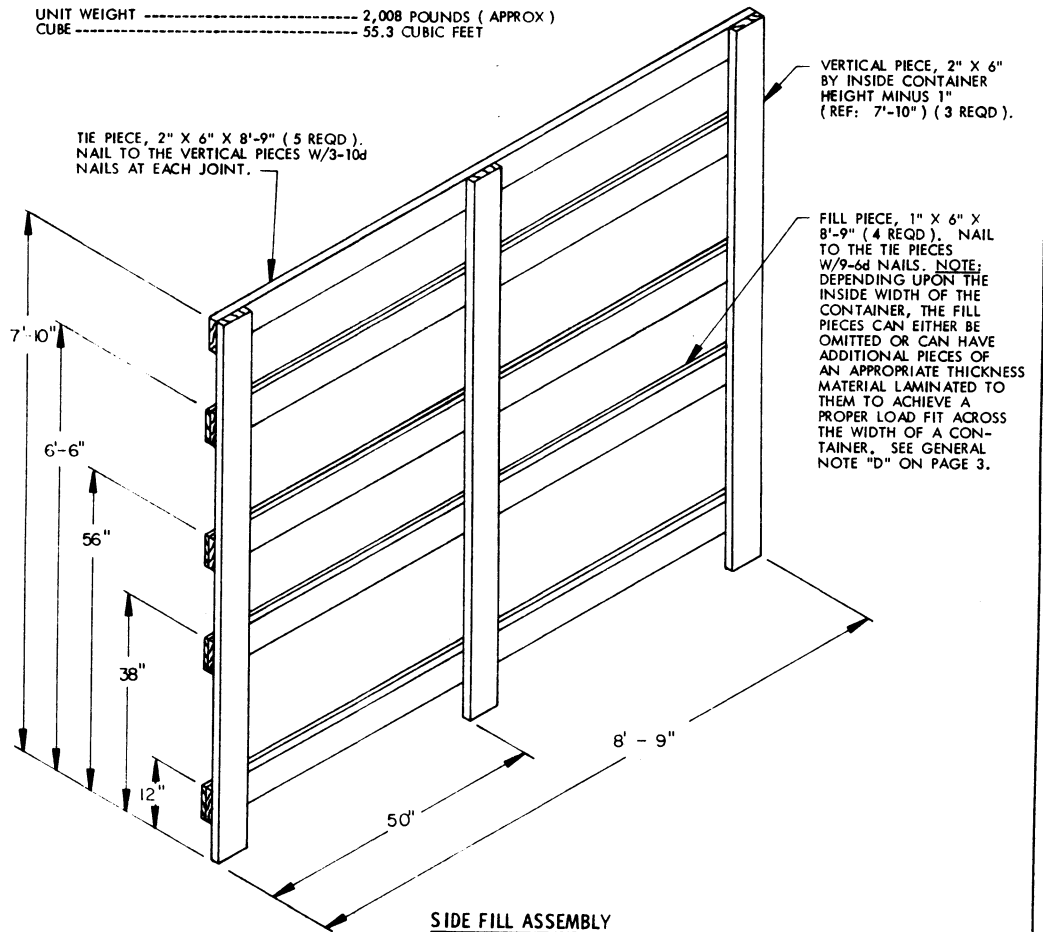


REAR BLOCKING ASSEMBLY

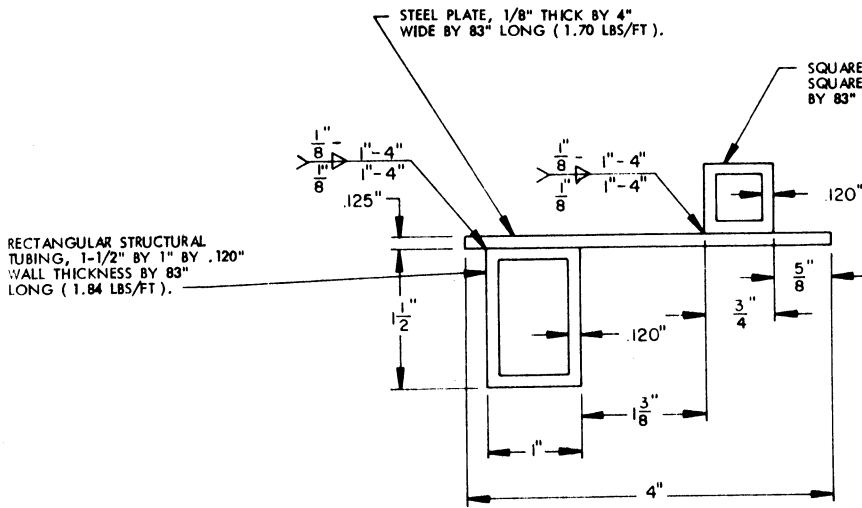


PALLET UNIT

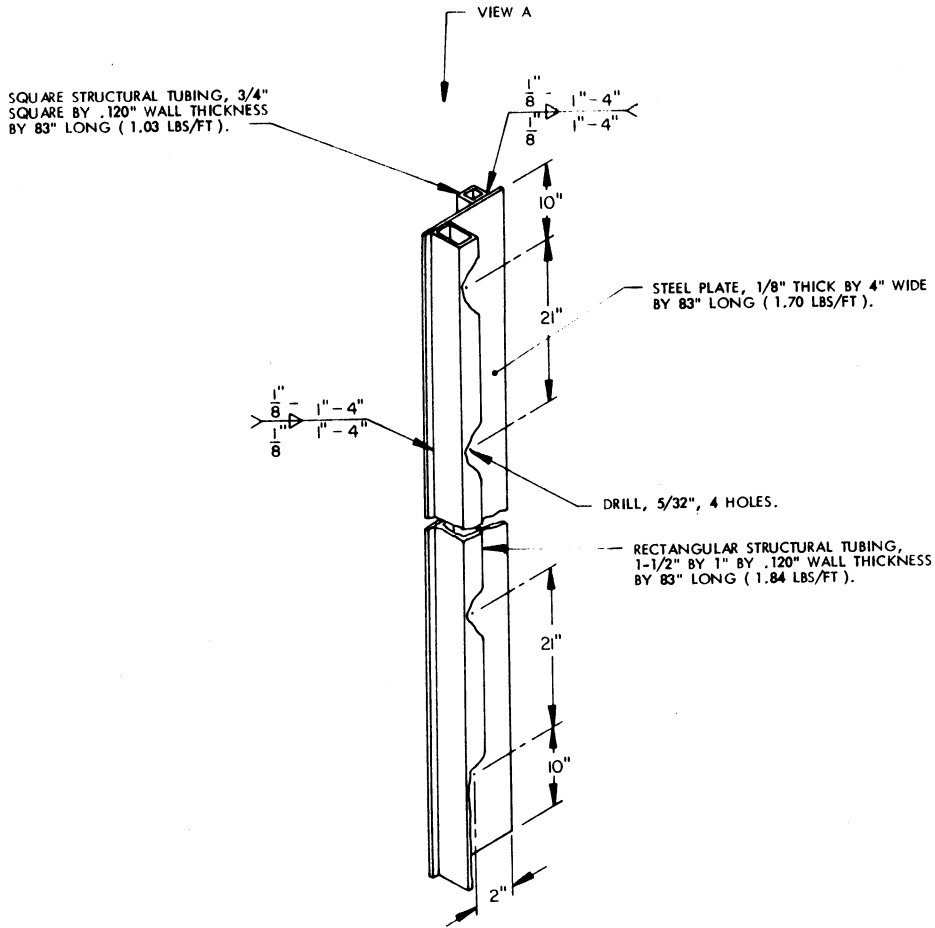
UNIT WEIGHT ----- 2,008 POUNDS (APPROX)
 CUBE ----- 55.3 CUBIC FEET



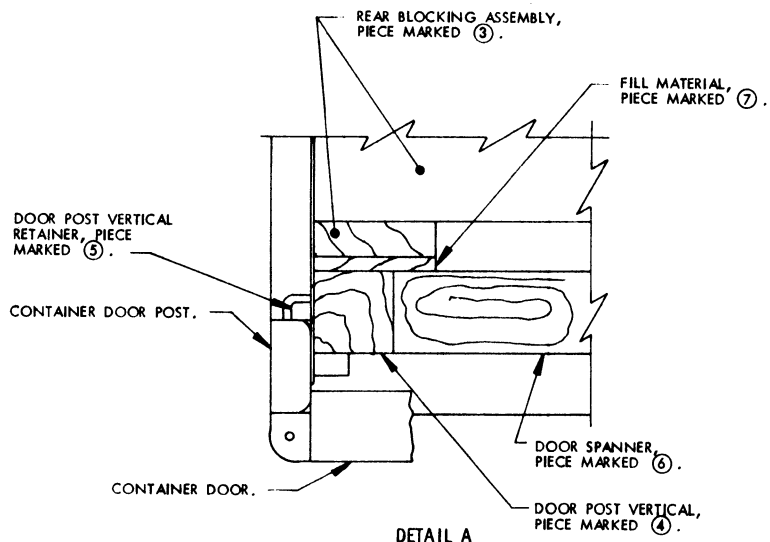
SIDE FILL ASSEMBLY



VIEW A

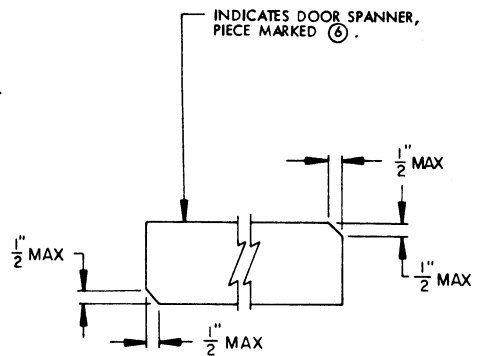


DOOR POST VERTICAL RETAINER



DETAIL A

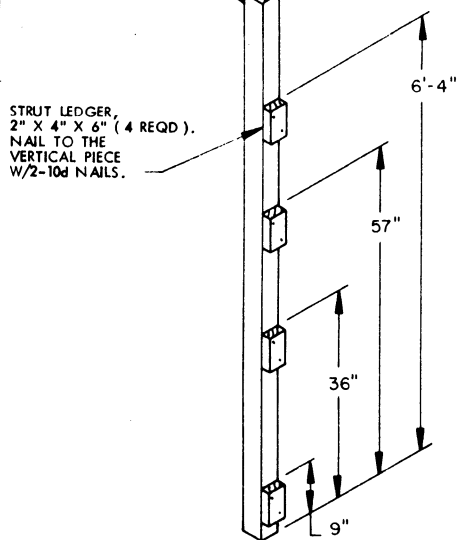
A PARTIAL PLAN VIEW OF THE LEFT REAR PORTION OF THE CONTAINER IS SHOWN DEPICTING THE PROPER POSITION OF THE DOOR POST VERTICAL AND ADJACENT DUNNAGE PIECES.



BEVEL-CUT

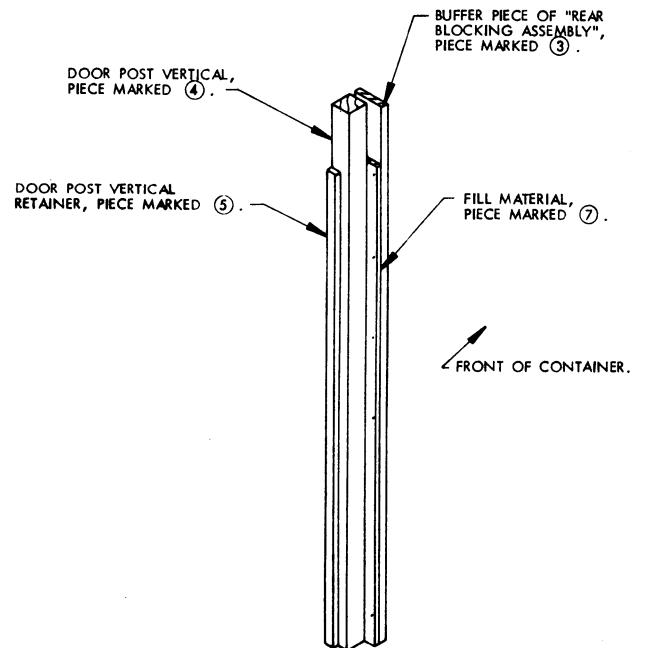
IF DESIRED, EACH END OF A DOOR SPANNER PIECE MAY BE BEVEL-CUT AS SHOWN ABOVE TO FACILITATE THE ACHIEVEMENT OF A TIGHT DOOR-POST-TO-DOOR-POST FIT.

VERTICAL PIECE, 4" X 4" BY INSIDE CONTAINER HEIGHT MINUS 1/2" (REF: 7'-10-1/2") (1 REQD).



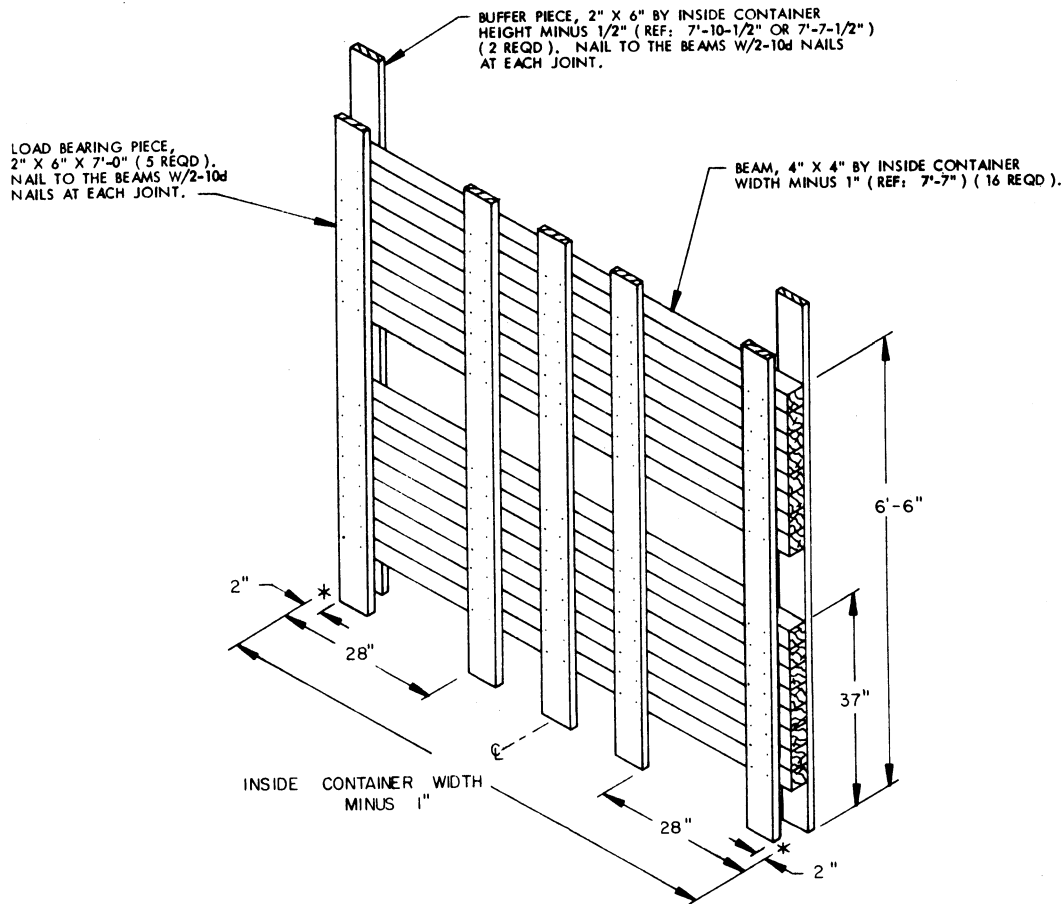
DOOR POST VERTICAL

THE STRUT LEDGERS CAN ONLY BE PRE-NAILED TO THE DOOR POST VERTICAL ON ONE SIDE OF THE CONTAINER. THE STRUT LEDGERS ON THE OTHER SIDE ARE TO BE NAILED AFTER A LOWER DOOR SPANNER IS INSTALLED.



DETAIL B

DOOR SPANNERS AND STRUTS HAVE BEEN OMITTED FOR CLARITY PURPOSES.



ALTERNATIVE FORWARD/REAR BLOCKING ASSEMBLY

SEE SPECIAL NOTE BELOW.

SPECIAL NOTE:

1. VARIANCE IN PALLET UNIT DIMENSIONS WILL NECESSITATE ADJUSTMENTS IN DUNNAGE ASSEMBLIES. SEE GENERAL NOTE "D" ON PAGE 3. WHEN THE UNIT WIDTH IS LESS THAN 52-1/2", THE FILL MATERIAL, PIECE MARKED (7) ON PAGE 2, MUST BE INCREASED TO PROVIDE A TIGHT FIT BETWEEN THE REAR BLOCKING ASSEMBLY AND THE DOOR POST VERTICAL. IF THE UNIT WIDTH IS GREATER THAN 52-1/2", IT WILL BE NECESSARY TO USE THE "ALTERNATIVE FORWARD/REAR BLOCKING ASSEMBLY", AS DEPICTED ABOVE, IN LIEU OF THE "FORWARD BLOCKING ASSEMBLY" AND/OR THE "REAR BLOCKING ASSEMBLY", AS DEPICTED ON PAGE 4.