

WR-52/11A
Change Notice 1
13 March 1973

NAVAL ORDNANCE SYSTEMS COMMAND
DEPARTMENT OF THE NAVY
WEAPONS REQUIREMENT, CARLOADING

Bomb, General Purpose, MK 83 and MODS (1000 LB.)
in Pallet, Bomb, MK 11 MOD 0
Fleet Issue Unit Load

This notice forms a part of WR-52/11A dated
17 March 1969 and is mandatory for use by
establishments of the Naval Systems Command
within the Naval Material Command.

Page 1.

1. Under "Unit Load Data" add

Thermally Protected
on MK 11 Pallet with Saddles

2976 lbs.
74 $\frac{1}{4}$ L x 43 $\frac{1}{2}$ W x 19 $\frac{1}{2}$ H
36.4 cu.ft.

2. Add "54/243 Palletizing" in Associated Process Column.

Page 2.

1. Change Note 5 of General Notes to read:

"The load consists of 1000 lb. General Purpose Bombs
MK 83 and MODS with Metal or Plastic Nose Plugs on
Bomb Pallet MK 11 MOD 0 palletized in accordance
with WR-54/35 or Thermally Protected Bombs palletized
in accordance with WR-54/243."

Distribution

MIL-STD-1325

Preparing Activity

U.S. NAD Earle (NWHL)

Code Ident
10001

Naval Ordnance Systems Command
Department of the Navy

WR-52/11A

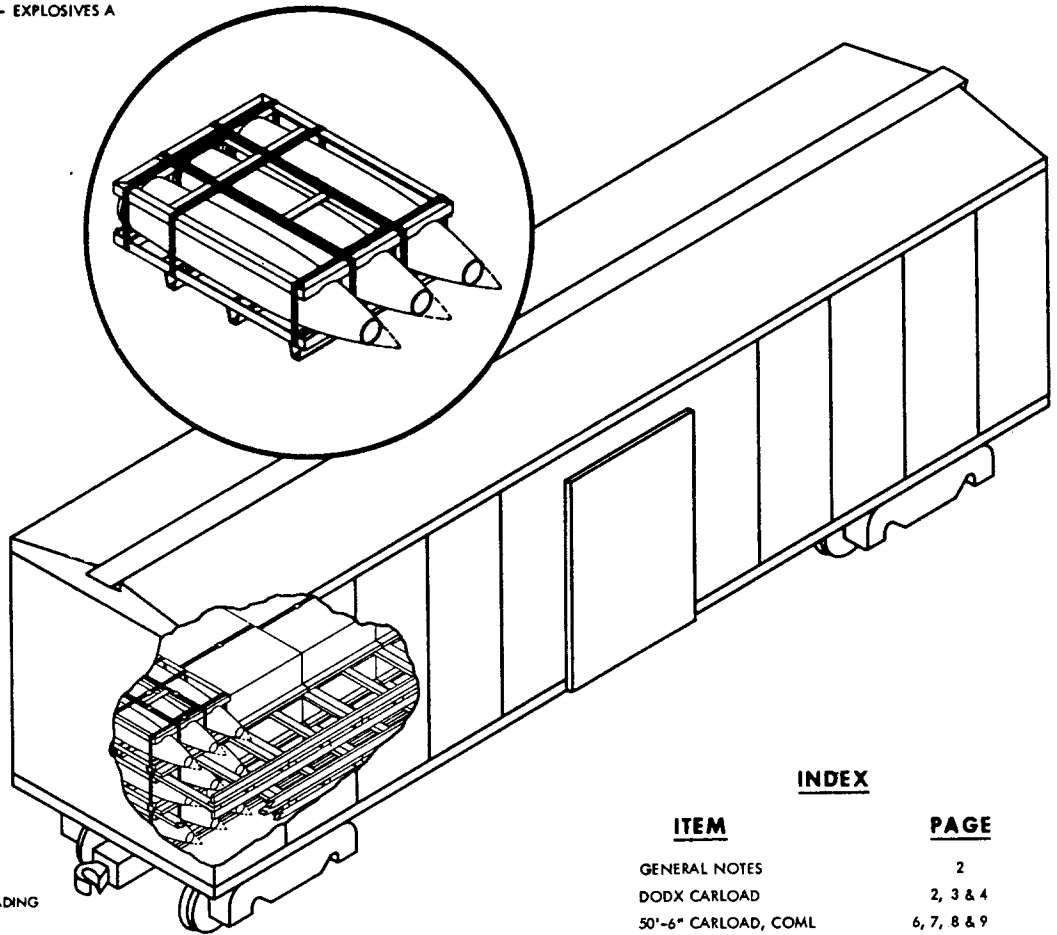
17 MARCH 1969

**WEAPONS REQUIREMENT, CARLOADING
BOMB, GENERAL PURPOSE, MK 83 & MODS (1000 LB.)
IN PALLET, BOMB, MK 11 MOD 0
FLEET ISSUE UNIT LOAD**

SUPERSEDING
WR-52/11
7 APRIL 1966

UNIT LOAD DATA

	<u>METAL NOSE PLUGS</u>	<u>PLASTIC NOSE PLUGS</u>
WEIGHT -	2975 LBS.	2930 LBS.
DIMENSIONS -	79 3/4 L X 43 1/2 W X 19 H	75 1/8 L X 43 1/2 W X 19 H
CUBE -	38.2 CU.FT.	36.0 CU.FT.
DOT HAZARD CLASSIFICATION - EXPLOSIVES A		



THIS WR SUPERSEDES
AND CANCELS ALL PRIOR
DRAWINGS COVERING CARLOADING
OF THIS ITEM
UNLESS OTHERWISE SPECIFIED
DIMENSIONS ARE IN INCHES

INDEX

<u>ITEM</u>	<u>PAGE</u>
GENERAL NOTES	2
DODX CARLOAD	2, 3 & 4
50'-6" CARLOAD, COML	6, 7, 8 & 9

54/35	PALLETIZING
51/7	TRUCKLOADING
WR NO.	ASSOCIATED PROCESS

A	INCLUDE PLASTIC NOSE PLUGS, DELETE 40'-6", ADD 50'-6" COMM. CAR	12/2/66	JFK	A.F.B.	R.C.O.
REV LTR	REVISION DESCRIPTION	DATE	VDA	BUXPL	SYSKOM
			APPROVAL		

**AUTHORIZED AND RELEASED FOR
GENERAL USE.**

APPROVED BY BUREAU OF EXPLOSIVES

A. F. Brassmuck **MILITARY ASSISTANT** 3/8/66
SIGNATURE DATE

J. E. Kelly **NRHL** 3/17/66
SIGNATURE TECHNICAL DIRECTING ACTIVITY (TDA) DATE
N. A. Yunker 3/21/66
SIGNATURE (ORD) SYSKOM, BY DIRECTION DATE

ORIGINATOR *JR Bauman* 3/17/66
SIGNATURE

**NAVAL WEAPONS HANDLING LABORATORY
U.S.N.A.D. EARLE, NEW JERSEY**

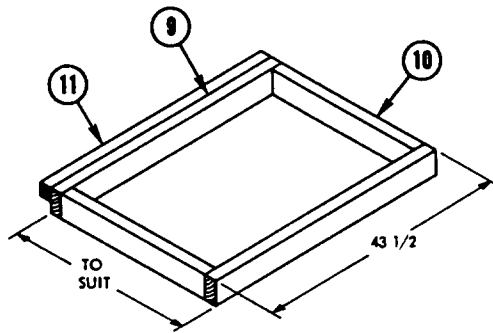
GENERAL NOTES

1. FOR GENERAL INFORMATION CONCERNING ORDERING, INSPECTING, AND PREPARING CARS, AND FOR DUNNAGING MATERIALS, DESIGN, AND INSTALLATION OF DUNNAGE SEE THE GENERAL DOCUMENT WR-52 "CARLOADING OF WEAPONS AND MAJOR WEAPON SYSTEM COMPONENTS."
2. WHEN PLANNING SHIPMENTS ORDER THE MINIMUM NUMBER OF CARS OF THE CAPACITY REQUIRED FOR THE SHIPMENT. UTILITY LOADER CARS SHALL BE SERIES DODX 28000.
3. LOADING PLANS SHOWN ARE FOR DODX UTILITY LOADER CAR WITH 50 FT. 6 INCHES INSIDE LENGTH, 107 3/4 INCHES INSIDE WIDTH BETWEEN RAILS (111 INCHES INSIDE WIDTH BETWEEN SIDE WALLS), AND COMMERCIAL BOXCARS WITH 50 FT. 6 INCHES INSIDE LENGTH, 110 INCHES INSIDE WIDTH.
4. IF END WALLS OF CARS ARE NOT SQUARE THEY MUST BE SQUARED OFF BEFORE STARTING TO LOAD CAR.
5. THE LOAD CONSISTS OF 1000 LB. L. D. BOMBS MK 83 AND MODS WITH METAL OR PLASTIC NOSE PLUGS ON BOMB PALLET MK 11 MOD 0 PALLETIZED IN ACCORDANCE WITH WR-54/35.
6. THE UNIT LOADS ARE HANDLED AND LOADED WITH A SUITABLE FORK LIFT TRUCK.
7. UNLESS OTHERWISE SPECIFIED NAILING SHALL BE IN ACCORDANCE WITH WR-52.
8. APPLICABLE MATERIAL SPECIFICATIONS:
 - DUNNAGE LUMBER - FED. SPEC. MM-L-751
 - NAILS - FED. SPEC. FF-N-105
 - STRAPPING - FED. SPEC. QQ-S-781, TYPE I, CLASS A
9. AFTER BLOCKING AND BRACING HAS BEEN INSPECTED ATTACH SHIPPING DOCUMENTS INSIDE THE CAR IN AN ACCESSIBLE AREA, CLOSE AND SEAL BOXCAR DOORS, AND ATTACH APPLICABLE PLACARDS TO THE OUTSIDE OF CAR AS PRESCRIBED IN OP 2165 (VOL. I).

50 FT. 6 IN. BOXCAR, DODX

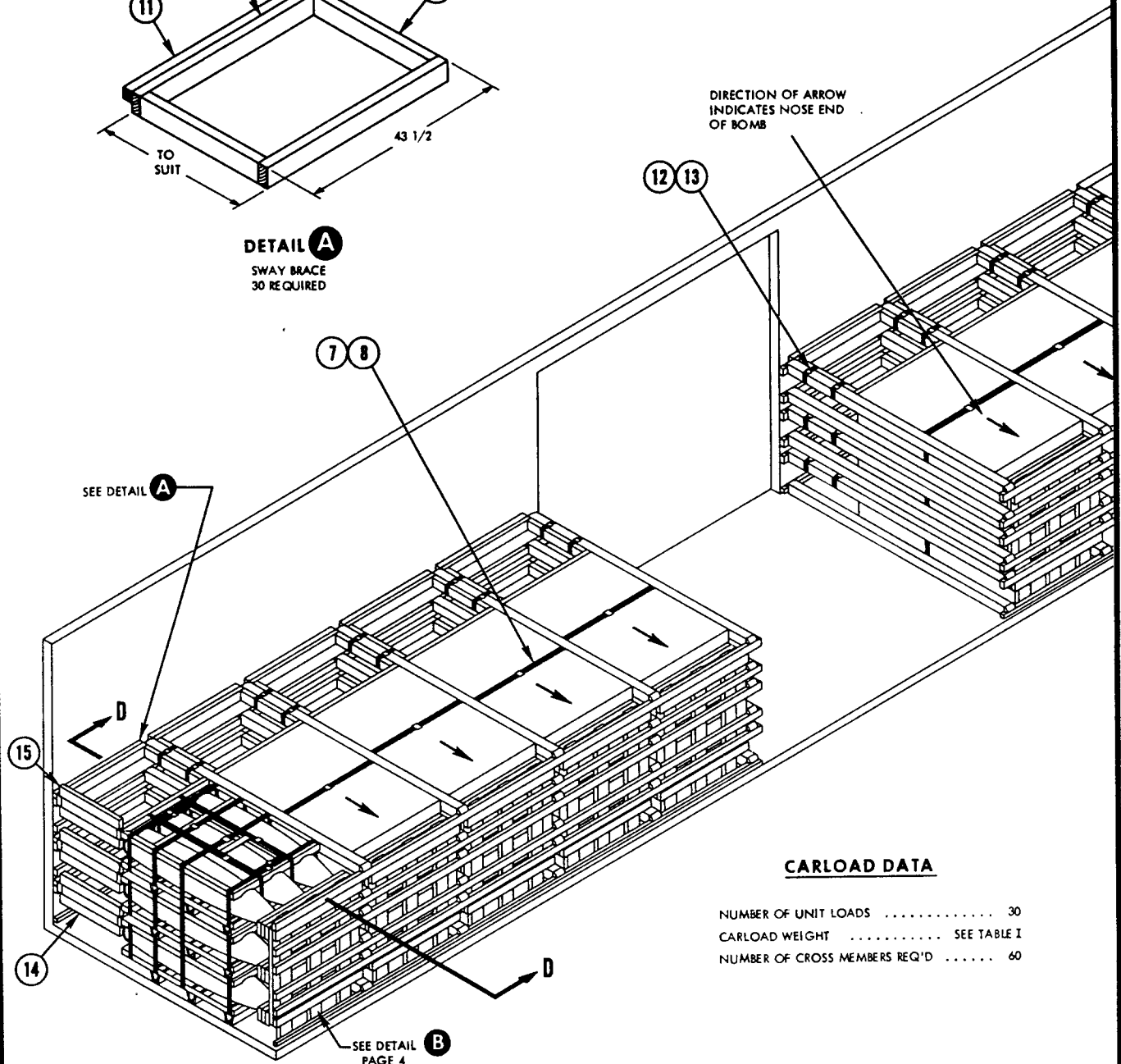
1. THE CARLOAD CONSISTS OF 30 UNIT LOADS WHICH MUST BE LOADED AND DUNNAGED IN ACCORDANCE WITH THIS PROCEDURAL DRAWING.
2. A DETAILED DESCRIPTION AND OPERATING INSTRUCTIONS FOR THE UTILITY LOADER ARE CONTAINED IN OP 1750.
3. TO PREVENT UNUSED "DF" EQUIPMENT FROM BECOMING DISLODGED DURING TRANSIT OF DODX CARS SECURE IT AT ANY LOCATION IN THE BOXCAR WHICH WILL NOT INTERFERE WITH UNLOADING.
4. WHEN LESS THAN CARLOAD (LCL) QUANTITIES ARE REQUIRED TO BE SHIPPED IN DODX BOXCARS THE SAME PROCEDURES AND METHODS OF BLOCKING ARE APPLICABLE. ANY BAYS OR PORTION THEREOF MAY BE USED PROVIDING THE WEIGHT DISTRIBUTION REQUIREMENTS OF THE AAR ARE COMPLIED WITH (SEE WR-52). EACH CROSSMEMBER WILL BE USED IN SUCH A MANNER THAT IT WILL RETAIN NOT MORE THAN 2000 LBS. OF THE LADING.

15	UPPER CLEAT	2 x 4 x 24	6	CAR WALL	4	12d
14	LOWER CLEAT	2 x 4 x 24	6	CAR WALL	4	12d
13	SEAL	5/8	60	-	-	-
12	STRAP	5/8 x .020 x 30	60	-	-	-
11	SWAY CLEAT	2 x 2 x 43 1/2	30	9	5	12d
10	SWAY STRUT	2 x 4 x TO SUIT	60	SEE 9	-	-
9	LONGITUDINAL SWAY MEMBER	2 x 4 x 43 1/2	60	10	2 PER JOINT	16d
8	SEAL	1 1/4 x 22 GA. MIN.	10	-	-	-
7	STRAP	1 1/4 x .035 x 17 FT.	10	-	-	-
6	NOSE FRAME CLEAT	2 x 4 x 43 1/2	20	1	3 PER JOINT	12d
5	NOSE FRAME STOP	2 x 4 x 42	20	2	2 PER JOINT	12d
4	NOSE FRAME HORIZONTAL	2 x 6 x 43 1/2	30	3	2 PER FOOT	12d
3	NOSE FRAME HORIZONTAL	2 x 6 x 43 1/2	30	2	2 PER FOOT	12d
2	NOSE FRAME HORIZONTAL	2 x 6 x 43 1/2	30	1	3 PER JOINT	12d
1	NOSE FRAME VERTICAL	2 x 6 x 54	30	SEE 2	-	-
PIECE NO.	DESCRIPTION	SIZE	NO. PCS. REQ'D	NAIL TO	NUMBER	SIZE
					NAILS	
LIST OF MATERIALS AND NAILING DATA						



DETAIL A
SWAY BRACE
30 REQUIRED

DIRECTION OF ARROW
INDICATES NOSE END
OF BOMB

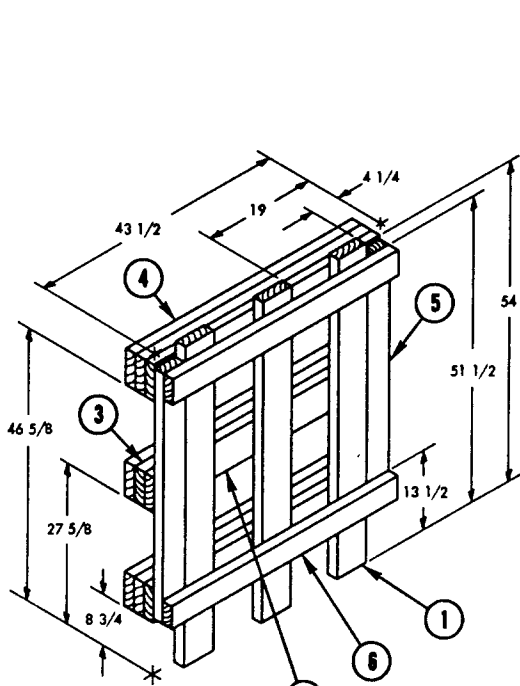


CARLOAD DATA

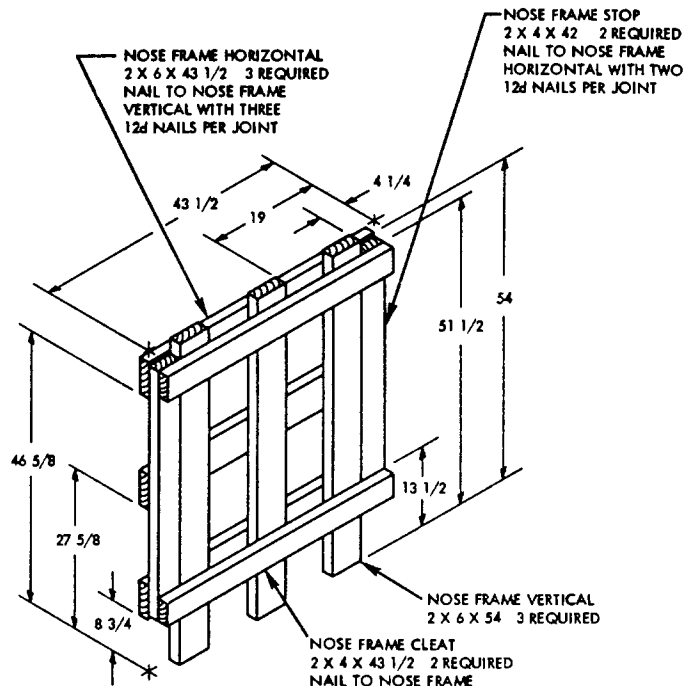
NUMBER OF UNIT LOADS 30
 CARLOAD WEIGHT SEE TABLE I
 NUMBER OF CROSS MEMBERS REQ'D 60

TABLE I

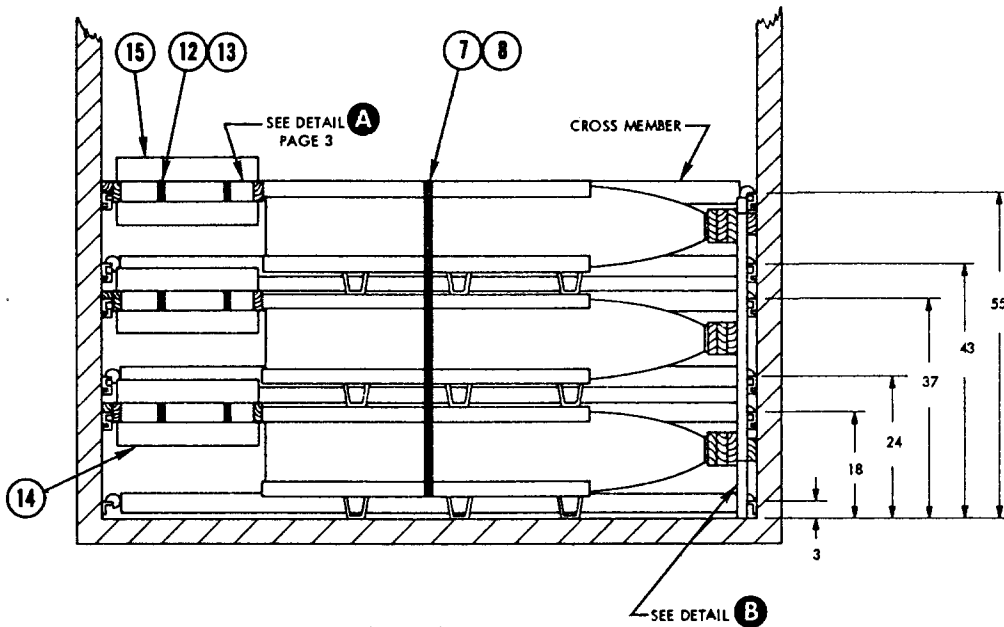
NOSE PLUGS	UNIT LOAD WEIGHT (LBS.)	DUNNAGE WEIGHT (LBS.)	CARLOAD WEIGHT (LBS.) (INCLUDING DUNNAGE)
PLASTIC	2930	2005	89,905
METAL	2975	1505	90,755



DETAIL B
NOSE END FRAME
FOR USE WITH PLASTIC NOSE PLUGS
10 REQUIRED



DETAIL C
ALTERNATE NOSE END FRAME
FOR USE WITH METAL NOSE PLUGS
10 REQUIRED



SECTION D-D
SHOWING LOCATION OF
WALL MEMBERS USED FOR
CROSS MEMBERS

THIS PAGE INTENTIONALLY LEFT BLANK

50 FT. 6 IN. BOXCAR, COMMERCIAL

1. THE CARLOAD CONSISTS OF 36 UNIT LOADS WHICH MUST BE LOADED AND DUNNAGED IN ACCORDANCE WITH THIS PROCEDURAL DRAWING.
2. WHEN LESS THAN CARLOAD (LCL) QUANTITIES ARE REQUIRED TO BE SHIPPED IN COMMERCIAL BOXCARS AND A PARTIAL LAYER RESULTS, THE PARTIAL LAYER OF LADING SHALL BE BRACED BY MEANS OF END BRACING AND/OR PARTIAL LAYER BRACING CONSTRUCTED IN ACCORDANCE WITH DETAILS PAGES 8, 9 AND 10 OF WR-52/100. SELECT THE TYPE OF BRACE TO COMPLY WITH THE WEIGHT OF THE UNITS TO BE RETAINED. THE CENTER GATE HEIGHT SHOULD BE ADJUSTED AS REQUIRED.
3. THE LOADS AS SHOWN ARE BASED ON CARS WHICH HAVE 10 FT. WIDE DOORWAY OPENINGS AND ARE EQUIPPED WITH CONVENTIONAL SLIDING TYPE DOORS. THE DEPICTED PROCEDURES AND METHODS OF BLOCKING ARE APPLICABLE TO BOXCARS EQUIPPED WITH CONVENTIONAL SLIDING DOORS OTHER THAN 10 FT. WIDE PROVIDING THE LENGTH OF PIECE 17 IS ADJUSTED AS REQUIRED TO SUIT THE PARTICULAR DOORWAY OPENING.
4. THE DEPICTED PROCEDURES AND METHODS OF BLOCKING ARE ALSO APPLICABLE TO BOXCARS EQUIPPED WITH PLUG TYPE DOORS PROVIDING THE DOORS ARE SPANNED WITH 2 X 6 MEMBERS AT PROPER HEIGHTS TO BACK UP SWAY BRACING. THE LENGTH OF PIECE 17 MUST BE ADJUSTED AS REQUIRED TO SUIT THE PARTICULAR DOORWAY OPENING. IF WIDTH OF DOORWAY EXCEEDS LENGTH OF AVAILABLE LUMBER, RANDOM LENGTH MATERIAL DOUBLED AND SPLICED BUT WITH JOINTS OF SPLICES OFFSET MAY BE USED. PIECES 19 AND 20 WILL NOT BE REQUIRED WHEN PLUG DOOR EQUIPPED BOXCARS ARE USED, EXCEPT WHEN CAR HAS A COMBINATION OF PLUG DOOR AND CONVENTIONAL SLIDING DOOR. THEN DOORWAY PROTECTION IS REQUIRED FOR THE CONVENTIONAL DOOR. DUNNAGE MATERIAL MUST NOT BE NAILED TO ANY PLUG DOOR, WHETHER MAIN OR AUXILIARY, EXCEPT WHEN THE CAR HAS A COMBINATION OF A CONVENTIONAL SLIDING TYPE DOOR AND PLUG TYPE DOOR, AND AN ADEQUATE NAILING STRIP IS PROVIDED ON THE PLUG TYPE DOOR. SECURELY CLOSE DOORS AND WIRE TOGETHER WITH A STRONG FLEXIBLE STEEL WIRE INSERTED THROUGH THE HOLES IN THE DOOR LATCH ASSEMBLY ONE OR MORE TIMES AND THE WIRE ENDS TWISTED TOGETHER.

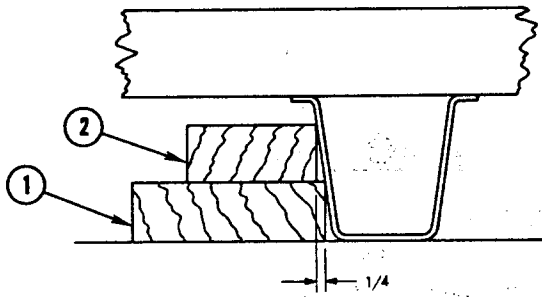
TABLE II

NOSE PLUGS	UNIT LOAD WEIGHT (LBS.)	DUNNAGE WEIGHT (LBS.)	CARLOAD WEIGHT (LBS.) (INCLUDING DUNNAGE)
PLASTIC	2930	3152	108,632
METAL	2975	3152	110,252

PIECE NO.	DESCRIPTION	SIZE	NO. PCS. REQ'D	NAIL TO	NUMBER	SIZE
21	CENTER GATE STOP	2 x 4 x 96	2	CAR FLOOR	2 PER FOOT	16d
20	HORIZONTAL DOORWAY MEMBER	2 x 4 x DOOR WIDTH	4	19	3 PER JOINT	12d
19	VERTICAL DOORWAY MEMBER	2 x 3 x 72	4	DOOR POST	2 PER FOOT	20d
18	HOLD DOWN CLEAT	2 x 6 x 24	4	17	5	12d
17	GATE HOLD DOWN	2 x 6 x 14 FT.	2	CAR WALL	5 EA. END	10d
16	VERTICAL TIE BAR	2 x 4 x 54	3	14	3 PER JOINT	12d
15	HORIZONTAL TIE BAR	2 x 4 x 60	4	14	3 PER JOINT	12d
14	STRUT	2 x 6 x WEDGE FIT	24	12	2 PER JOINT	12d
13	STRUT CLEAT	2 x 4 x 60	8	12	3 PER JOINT	12d
12	CENTER GATE VERTICAL	2 x 6 x 57	6	SEE 9	-	-
11	CENTER GATE HORIZONTAL	2 x 6 x CAR WIDTH -1	2	12	3 PER JOINT	12d
10	CENTER GATE HORIZONTAL	2 x 10 x 60	4	12	4 PER JOINT	12d
9	CENTER GATE HORIZONTAL	2 x 6 x 60	2	12	3 PER JOINT	12d
8	SWAY FRAME TOP CLEAT	2 x 4 x 20 FT. 3	8	CAR WALL	SEE NOTE*	
7	SWAY FRAME LATERAL MEMBER	2 x 4 x TO SUIT	144	SEE 6	-	-
6	SWAY FRAME LONGITUDINAL	2 x 4 x 43 1/2	96	7	2 PER JOINT	12d
5	SEAL	1 1/4 x 22 GA. MIN.	12	-	-	-
4	STRAP	1 1/4 x .035 x 17 FT.	12	-	-	-
3	SWAY FRAME BOTTOM CLEAT	2 x 4 x 20 FT. 3'	8	CAR WALL	SEE NOTE*	
2	SLEEPER	2 x 4 x 43 1/2	24	1	2 PER FOOT	30d
1	SLEEPER	2 x 6 x 43 1/2	24	CAR FLOOR	2 PER FOOT	16d
					NUMBER	SIZE
					NAILS	

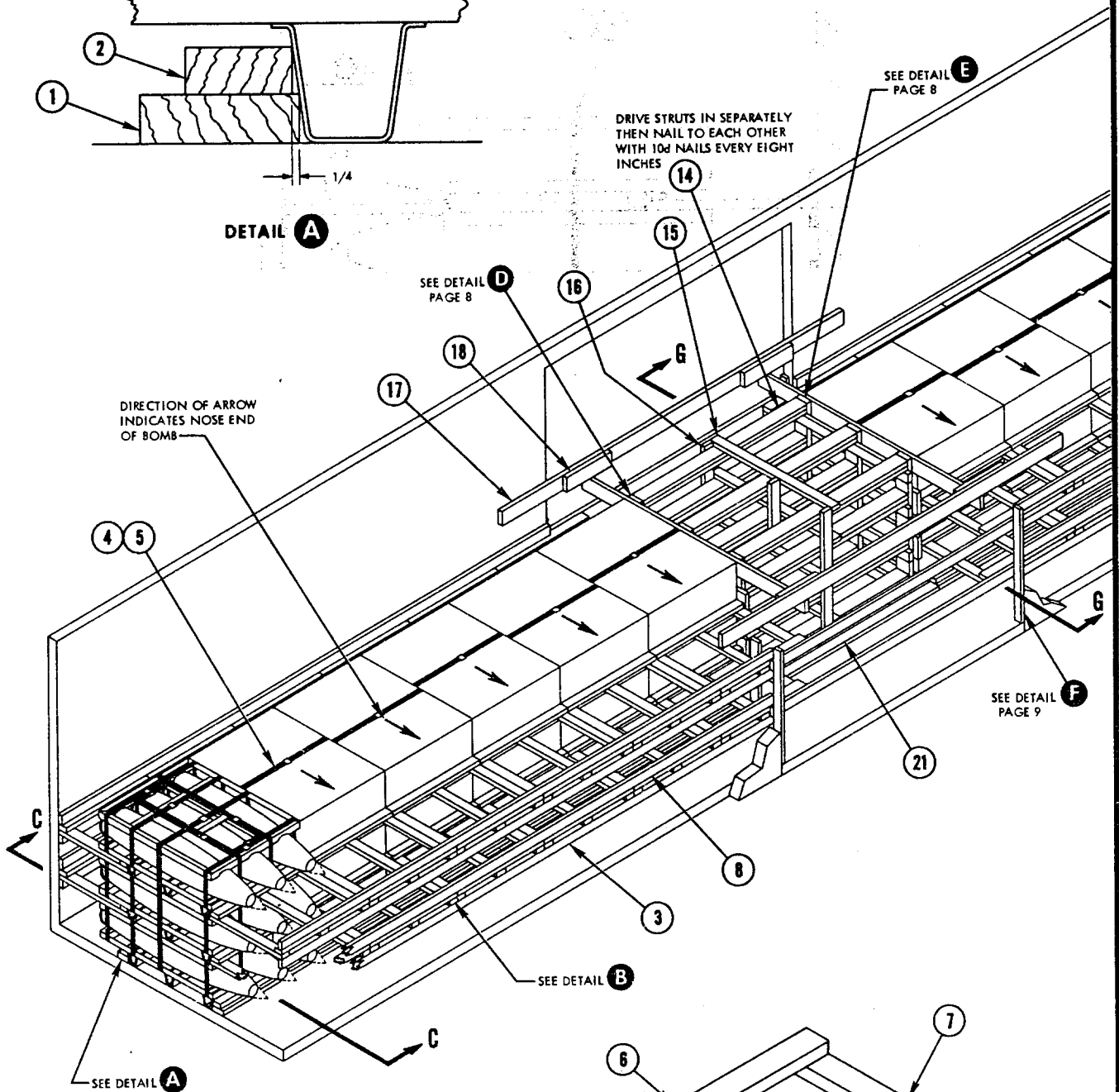
*FASTEN TO CAR WALL WITH TWO 10d NAILS PER FOOT AND TWO 16d NAILS IN EACH WALL STUD. RANDOM LENGTH PIECES MAY BE USED.

LIST OF MATERIALS AND NAILING DATA



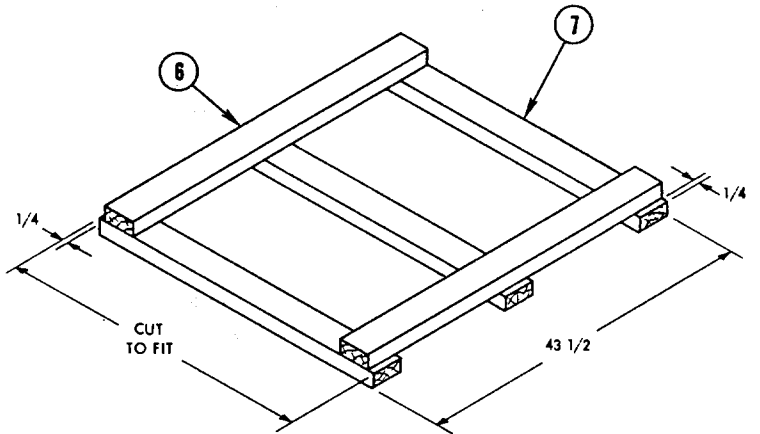
DETAIL A

DRIVE STRUTS IN SEPARATELY THEN NAIL TO EACH OTHER WITH 10d NAILS EVERY EIGHT INCHES

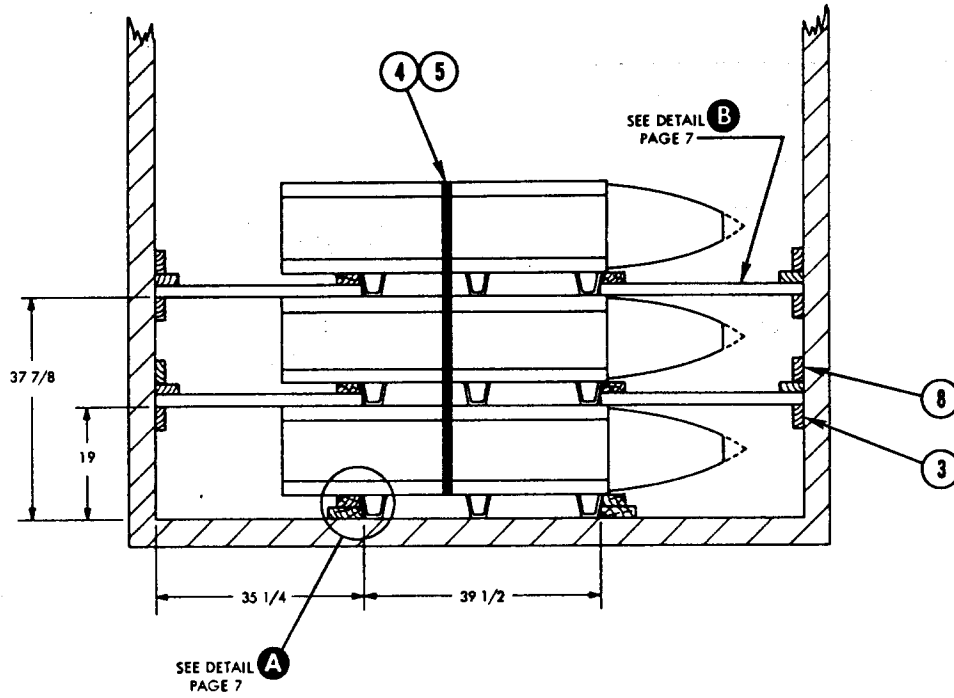


CARLOAD DATA

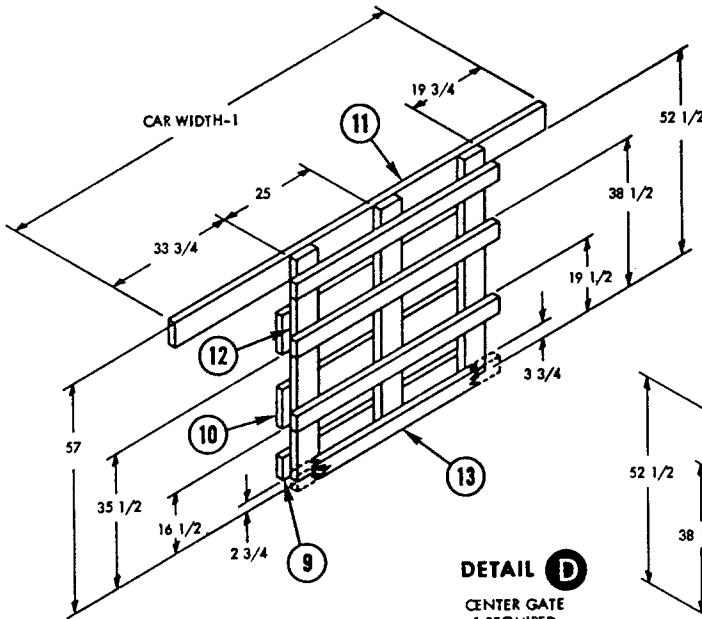
NUMBER OF UNIT LOADS 36
 CARLOAD WEIGHT SEE TABLE II



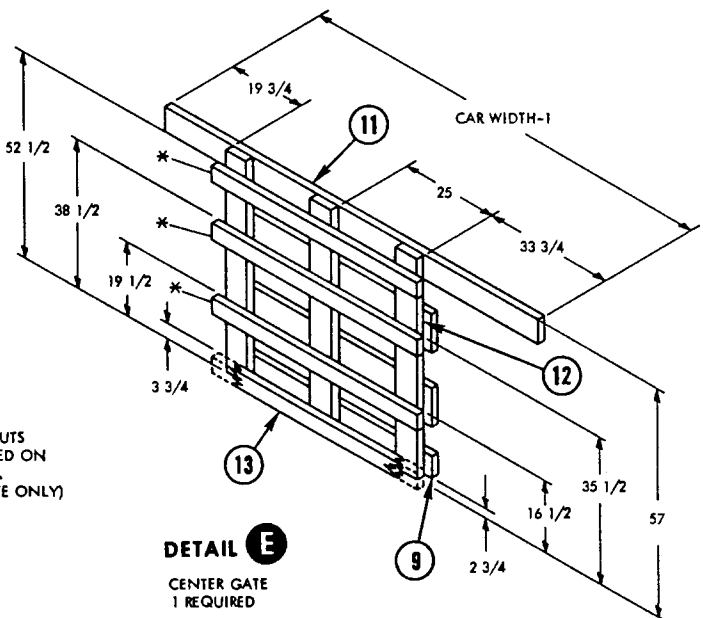
DETAIL B
 SWAY BRACE
 48 REQUIRED



SECTION C-C

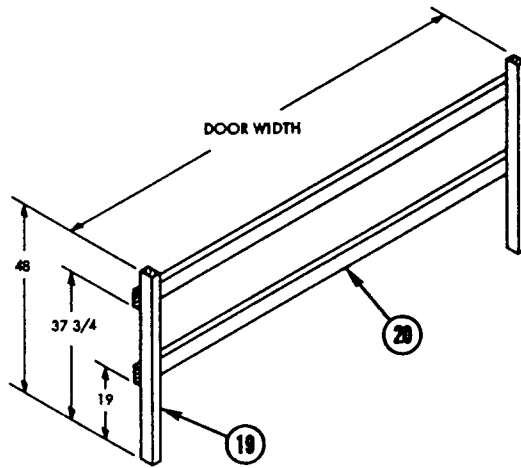


DETAIL D
CENTER GATE
1 REQUIRED

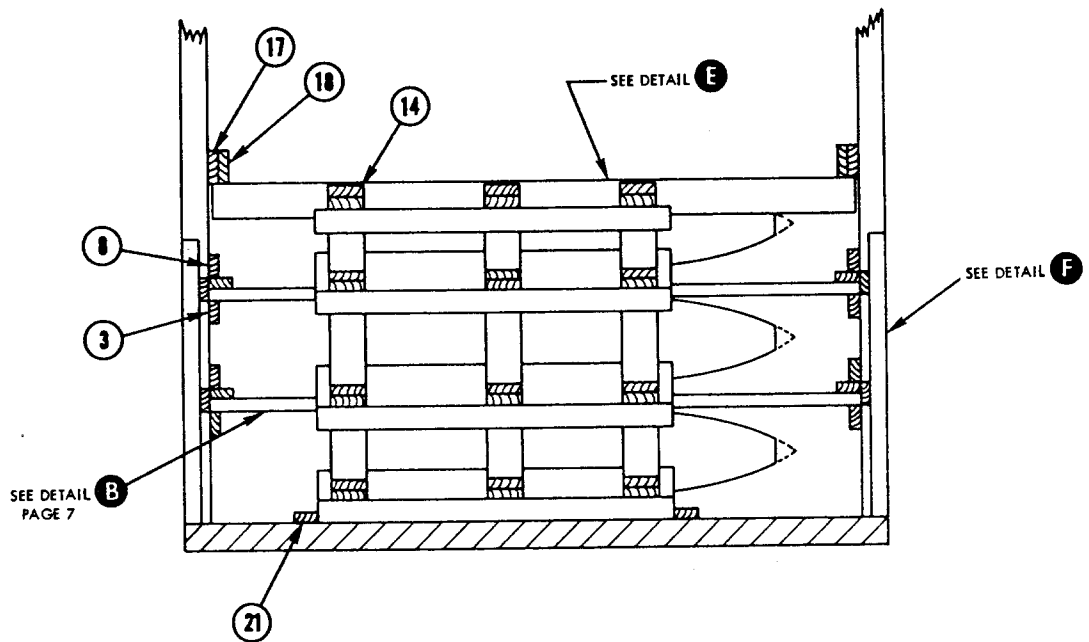


DETAIL E
CENTER GATE
1 REQUIRED

* POSITION AFTER STRUTS
HAVE BEEN INSTALLED ON
LOWER STRUT CLEAT.
(REQUIRED ONE GATE ONLY)



DETAIL F
DOORWAY PROTECTION
2 REQUIRED



SECTION G-G