

NOTICE OF INACTIVATION
FOR NEW DESIGN

INCH-POUND

MIL-STD-1325-85(OS)
NOTICE 3
25 February 1993
SUPERSEDING
NOTICE 2
1 March 1989

MILITARY STANDARD

**RAILCAR LOADING OF HAZARDOUS MATERIALS BOMB, GENERAL PURPOSE,
MK 84 MODS 0, 1, AND 2 (2000 LB.) IN UNIT LOAD ADAPTER MK 79 MOD 0**

This notice should be filed in front of MIL-STD-1325-175(OS), dated 14 July 1975.

MIL-STD-1325-175(OS) is inactive for new design and are no longer used by the Navy except for replacement purposes.

Preparing activity:
Navy - OS

(Project 8140-N891)

AMSC N/A

FSC 8140

DISTRIBUTION STATEMENT A. Approved for public release; distribution is unlimited.

NOTICE OF
VALIDATION

INCH-POUND

MIL-STD-1325/85(OS)

NOTICE 2

1 March 1989

MILITARY SPECIFICATION

RAILCAR LOADING OF HAZARDOUS MATERIALS
BOMB, GENERAL PURPOSE, MK 84 MODS 0, 1, AND 2
(2000 LB.) IN UNIT LOAD ADAPTER MK 79 MOD 0

MIL-STD-1325/85(OS) dated 08 MAR.1976, has been reviewed and determined to be valid for use in acquisition.

Preparing Activity:
Navy - OS

AMSC N/A

FSC 8140

DISTRIBUTION STATEMENT A: Approved for public release, distribution is unlimited.

MILITARY STANDARD
RAILCAR LOADING OF HAZARDOUS MATERIALS
BOMB, GENERAL PURPOSE, MK 84 MODS 0, 1, & 2 (2000 LBS.)
IN UNIT LOAD ADAPTER MK 79 MOD 0

TO ALL HOLDERS OF MIL-STD-1325-85 (NAVY)

Page 2

1. Add to NOTE 1 of the 50 Ft 6 in Commercial Boxcar notes the following: "Boxcars not having the load carrying capacity (LD. LMT.) for 30 unit loads may be loaded with 28 unit loads. The longer struts in the doorway area will require vertical and horizontal tie pieces (2 x 4 x To Suit)".

Review
NAVY - OS, AS

★ U.S. GOVERNMENT PRINTING OFFICE: 1976-603-766/4857

Preparing Activity:
NAVY - OS
(Project No. 8140-N162)
FSC 8140

MILITARY STANDARD

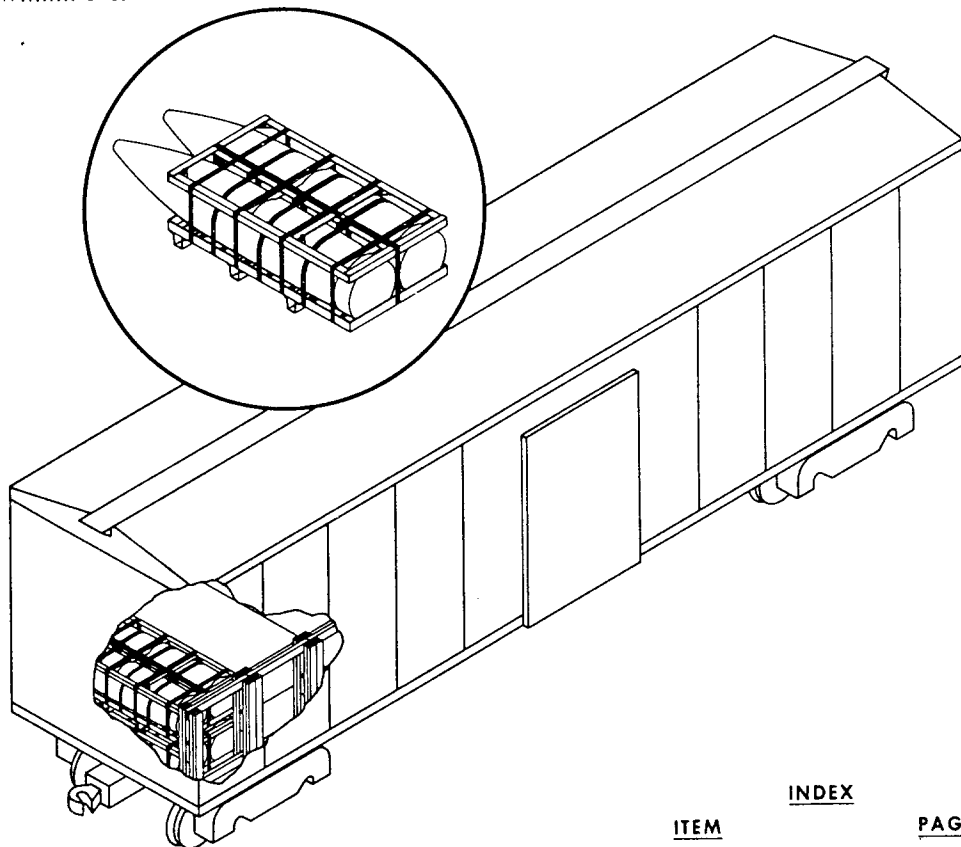
MIL-STD-1325-85
(NAVY)

RAILCAR LOADING OF HAZARDOUS MATERIALS BOMB, GENERAL PURPOSE, MK 84 MODS 0, 1, & 2 (2000 LB.) IN UNIT LOAD ADAPTER MK 79 MOD 0

8 MARCH 1976

SUPERSEDING
WR-52 '85
26 SEPTEMBER 1967

UNIT LOAD DATA DODIC/NALC NO. F270
UNIT LOAD DRAWING WR-54/127
WEIGHT (APPROXIMATE) 4053 LBS.
DIMENSIONS 99L X 38W X 24 1/4H
STACKING HEIGHT 23
CUBE 50.1 CU. FT.
DOT HAZARD CLASSIFICATION EXPLOSIVE A



INDEX

ITEM	PAGE
GENERAL NOTES	2
50'6" CARLOAD, CCM'L	2 THRU 6

NOTES:

- UNLESS OTHERWISE SPECIFIED DIMENSIONS ARE IN INCHES.
- FOR CROSS REFERENCE TO ASSOCIATED PALLETIZING, TRUCKLOADING AND CONTAINERLOADING MILITARY STANDARDS, REFER TO INDEX TO STANDARDS MIL-HDBK-236 (NAVY).

FSC 8140

**AUTHORIZED AND RELEASED
FOR GENERAL USE.**

APPROVED BY BUREAU OF EXPLOSIVES

MCS Gray NWHL 3/3/76
SIGNATURE TECHNICAL DIRECTION AGENT (TDA) DATE
E. Kelly 3/3/76
SIGNATURE (AIR) BYSCOM, BY DIRECTION DATE

M. F. Grammuck 2/5/76
SIGNATURE SUPERVISOR, MILITARY & INTERMODEL SERVICES DATE

ORIGINATOR *Charles McTigue* 3/3/76
SIGNATURE

**NAVAL WEAPONS HANDLING LABORATORY
WPNSTA EARLE, NEW JERSEY**

MIL-STD-1325-85 (NAVY)

GENERAL NOTES

1. FOR GENERAL INFORMATION CONCERNING ORDERING, INSPECTING, AND PREPARING CARS, AND FOR DUNNAGING MATERIALS, DESIGN, AND INSTALLATION OF DUNNAGE SEE THE GENERAL DOCUMENT MIL-STD-1325 (NAVY) "RAILCAR LOADING OF HAZARDOUS MATERIALS".
2. WHEN PLANNING SHIPMENTS ORDER THE MINIMUM NUMBER OF CARS OF THE CAPACITY REQUIRED FOR THE SHIPMENT.
3. LOADING PLANS SHOWN ARE FOR COMMERCIAL BOXCARS WITH 50 FT 6 INCHES INSIDE LENGTH, 110 INCHES INSIDE WIDTH.
4. THE "LOAD LIMIT" OF A CAR MUST NOT BE EXCEEDED NOR SHOULD THE RAILCAR BE LOADED SO THAT MORE THAN ONE-HALF OF THE "LOAD LIMIT" IS CARRIED BY ONE SET OF TRUCKS.
5. IF END WALLS OF CARS ARE NOT SQUARE THEY MUST BE SQUARED OFF BEFORE STARTING TO LOAD CAR.
6. THE LOAD CONSISTS OF 2000 LB MK B4 MOD 0, 1, OR 2 BOMBS PALLETIZED IN ACCORDANCE WITH WR-54/127.
7. THE UNIT LOADS ARE HANDLED AND LOADED WITH A SUITABLE FORK LIFT TRUCK.
8. UNLESS OTHERWISE SPECIFIED NAILING SHALL BE IN ACCORDANCE WITH MIL-STD-1325 (NAVY).
9. ALL STRAP JOINTS SHALL BE CRIMP-TYPE JOINTS MADE WITH A CRIMPING TOOL THAT DOES NOT CUT THE SEAL OR STRAP, RATHER THAN A TOOL THAT MAKES A NOTCH-TYPE JOINT. THE STRAPPING MUST BE IN ACCORDANCE WITH NAVSUP NOTICE 4642 DATED 21 APRIL 1971.
10. APPLICABLE MATERIAL SPECIFICATIONS:
 DUNNAGE LUMBER - FED. SPEC. MM-L-751
 NAILS - FED. SPEC. FF-N-105
 STRAPPING - FED. SPEC. QQ-5-781, TYPE I, HEAVY DUTY, CLASS A, DRY (UNLUBRICATED).
 SEALS - FED. SPEC. QQ-5-781, STYLE III, HEAVY DUTY
11. AFTER BLOCKING AND BRACING HAS BEEN INSPECTED ATTACH SHIPPING DOCUMENTS INSIDE THE CAR IN AN ACCESSIBLE AREA, CLOSE AND SEAL BOXCAR DOORS, AND ATTACH APPLICABLE PLACARDS TO THE OUTSIDE OF CAR AS PRESCRIBED IN OP 2165 (VOL. 1).

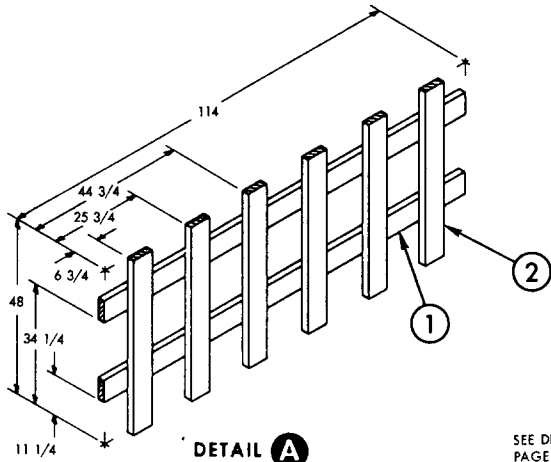
50 FT. 6 IN. BOXCAR, COMMERCIAL

1. THE CARLOAD CONSISTS OF 30 UNIT LOADS WHICH MUST BE LOADED AND DUNNAGED IN ACCORDANCE WITH THIS PROCEDURAL DRAWING.
2. WHEN LESS THAN CARLOAD (LCL) QUANTITIES ARE REQUIRED TO BE SHIPPED IN COMMERCIAL BOXCARS AND A PARTIAL LAYER RESULTS THE PARTIAL LAYER OF LADING SHALL BE BRACED AS FOLLOWS:
 A. BOXCARS WITH WOOD SIDEWALLS - BRACE BY MEANS OF END BRACING AND/OR PARTIAL LAYER BRACING CONSTRUCTED IN ACCORDANCE WITH MIL-STD-1325-100 (NAVY). SELECT THE TYPE OF BRACE TO COMPLY WITH THE WEIGHT OF THE UNITS TO BE RETURNED.
 B. BOXCARS WITH WOOD OR METAL SIDEWALLS - BRACE BY MEANS OF PARTIAL LAYER BRACING CONSTRUCTED IN ACCORDANCE WITH MIL-STD-1325-102 (NAVY). SELECT THE TYPE OF BRACE TO COMPLY WITH THE WEIGHT OF THE UNITS TO BE RETAINED. THE CENTER GATE HEIGHT SHOULD BE ADJUSTED AS REQUIRED. THE WEIGHT DISTRIBUTION REQUIREMENTS OF THE AAR MUST BE COMPLIED WITH (SEE MIL-STD-1325 (NAVY)).
3. THE LOADS AS SHOWN ARE BASED ON CARS WHICH HAVE 10 FT WIDE DOORWAY OPENINGS AND ARE EQUIPPED WITH CONVENTIONAL SLIDING TYPE DOORS. THE DEPICTED PROCEDURES AND METHODS OF BLOCKING ARE APPLICABLE TO BOXCARS EQUIPPED WITH CONVENTIONAL SLIDING TYPE DOORS OTHER THAN 10 FT WIDE PROVIDING THE LENGTH OF PIECES 3 AND 10 ARE ADJUSTED AS REQUIRED TO SUIT THE PARTICULAR DOORWAY OPENING.
4. THE DEPICTED PROCEDURES AND METHODS OF BLOCKING ARE ALSO APPLICABLE TO BOXCARS EQUIPPED WITH PLUG TYPE DOORS. DIMENSIONAL LUMBER DOORWAY PROTECTION IS NOT REQUIRED WHEN USING BOXCARS EQUIPPED SOLELY WITH PLUG DOORS. HOWEVER, WHEN USING BOXCARS EQUIPPED WITH A COMBINATION OF PLUG DOOR AND CONVENTIONAL SLIDING TYPE DOOR DIMENSIONAL LUMBER DOORWAY PROTECTION (SEE DETAIL D) IS REQUIRED FOR THE CONVENTIONAL DOOR. SECURELY CLOSE DOORS AND WIRE TOGETHER WITH A STRONG FLEXIBLE STEEL WIRE INSERTED THROUGH THE HOLES IN THE DOOR LATCH ASSEMBLY ONE OR MORE TIMES AND THE WIRE ENDS TWISTED TOGETHER.
5. FOR THOSE STACKS IN THE DOORWAY AREA THE BASE END SWAY BRACE VERTICAL (PIECE 7) MUST BE DECREASED BY ONE THICKNESS TO ALLOW POSITIONING BASE END DOORWAY PROTECTION.
6. WHEN BOXCARS OTHER THAN 9 FT 2 IN. WIDE ARE USED, THE BASE END SWAY BRACE VERTICALS (PIECE 7) MUST BE INCREASED OR DECREASED AS NECESSARY FOR A TIGHT LOAD ACROSS THE CAR.

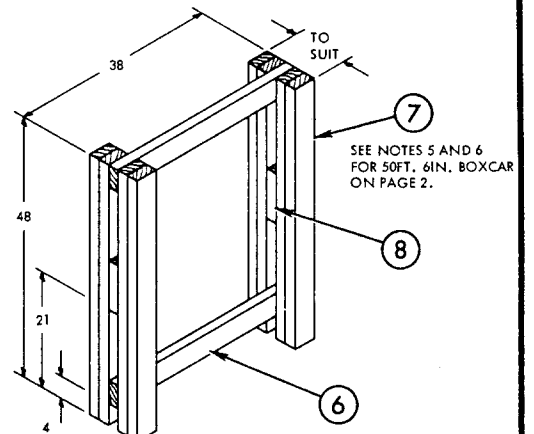
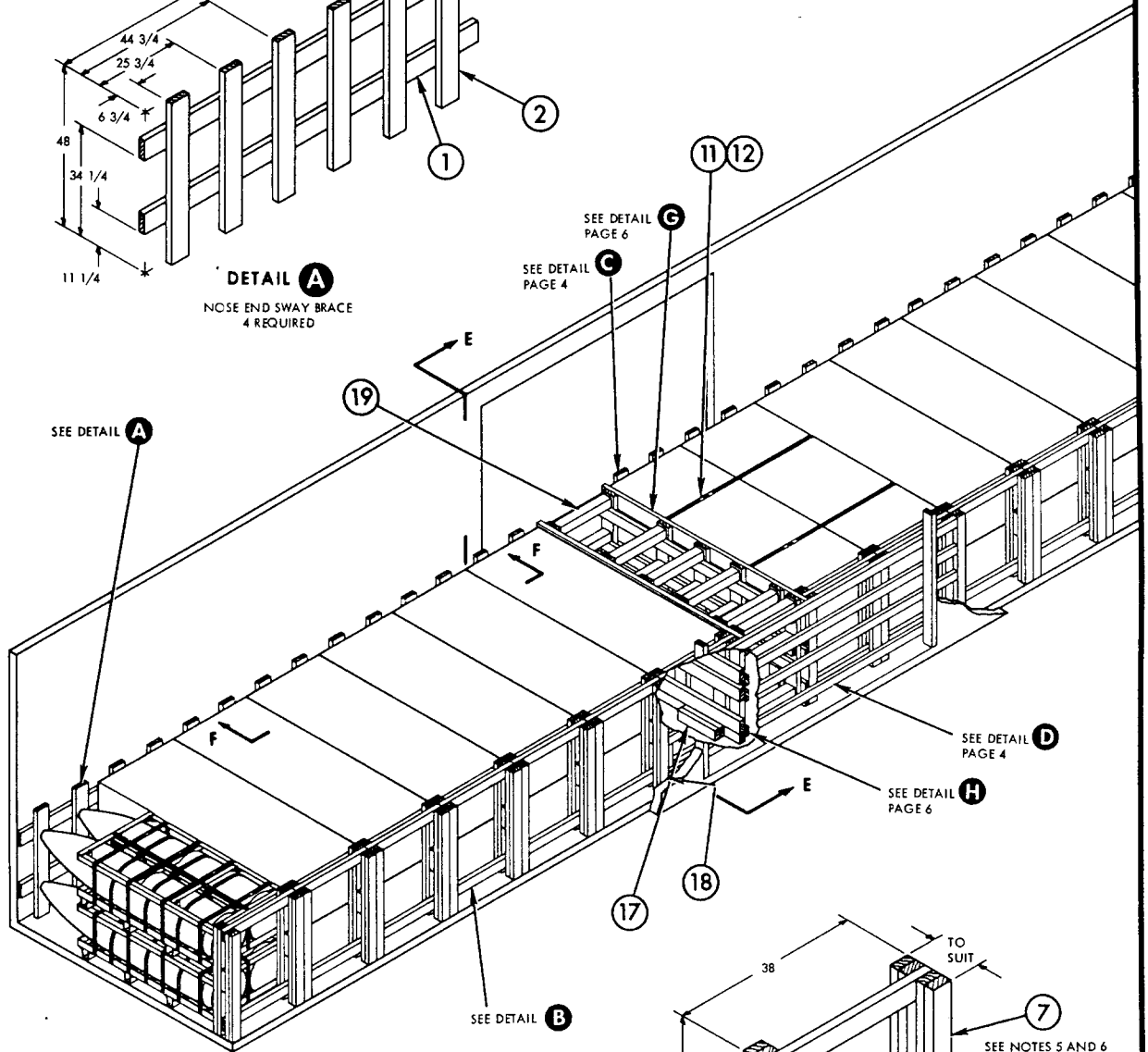
**2 X 6 STRUTS DOUBLED AND LAMINATED WITH 10d NAILS MAY BE SUBSTITUTED IN PLACE OF 4 X 4's.

*DOUBLED 2 X 4's CUT TO SUIT AND FIELD POSITIONED TO FIT UNDER BOTTOM FRAME AND BETWEEN SKIDS OF THE LOWER UNIT LOAD.

PIECE NO.	DESCRIPTION	SIZE	NO. OF PIECES REQ'D	NAIL TO	NUMBER	SIZE	PIECE NO.	DESCRIPTION	SIZE	NO. OF PIECES REQ'D	NAIL TO	NUMBER	SIZE
					NAILS							NAILS	
19	STRUT	4 X 4 X WEDGE FIT	24	14	2 PER JOINT	16d	10	HORIZONTAL DOORWAY MEMBER	2 X 4 X 12 FT 4	4	9	2 PER JOINT	10d
18	CENTER GATE HOLD DOWN *	2 X 4 X TO SUIT	4	17	4	10d	9	VERTICAL DOORWAY MEMBER	2 X 4 X 60	2	SEE 10	-	-
17	CENTER GATE HOLD DOWN *	2 X 4 X TO SUIT	4	16	4	10d	8	SWAY BRACE FILLER	2 X 4 X 9	30	7	3	10d
16	CENTER GATE FILLER	2 X 4 X CAR WIDTH - 1	2	14	3 PER JOINT	10d	7	SWAY BRACE VERTICAL	2 X 4 X 48	AS REQ'D	6	2 PER JNT	10d
15	CENTER GATE STRUT CLEAT	2 X 4 X CAR WIDTH - 1	8	14	3 PER JOINT	10d	6	SWAY BRACE HORIZONTAL	2 X 4 X 38	30	SEE 7	-	-
14	CENTER GATE VERTICAL	2 X 6 X 54	12	SEE 13, 15, 16	-	-	5	TIE PIECE	2 X 6 X 12	4	1, 3	2 PER JOINT	10d
13	CENTER GATE HORIZONTAL	2 X 6 X CAR WIDTH - 1	8	14	3 PER JOINT	10d	4	DOORWAY SWAY BRACE VERTICAL	2 X 6 X 48	6	3	3 PER JOINT	10d
12	SEAL	1 1/4	4	-	-	-	3	DOORWAY SWAY BRACE HORIZONTAL	2 X 6 X 12 FT 4	2	SEE 4	-	-
11	STRAP	1 1/4 X .035 X 22 FT	2	-	-	-	2	SWAY BRACE VERTICAL	2 X 6 X 48	24	1	3 PER JOINT	10d
							1	SWAY BRACE HORIZONTAL	2 X 6 X 114	8	SEE 2	-	-
LIST OF MATERIALS & NAILING DATA							LIST OF MATERIALS & NAILING DATA						



DETAIL A
NOSE END SWAY BRACE
4 REQUIRED

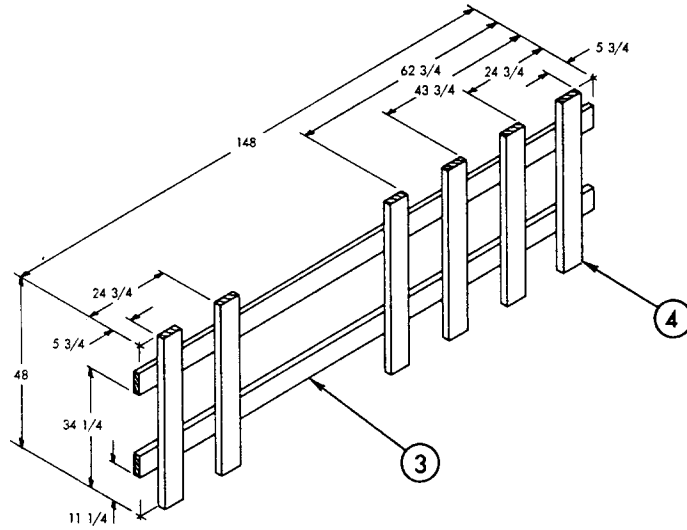


DETAIL B
BASE END SWAY BRACE
15 REQUIRED

CARLOAD DATA

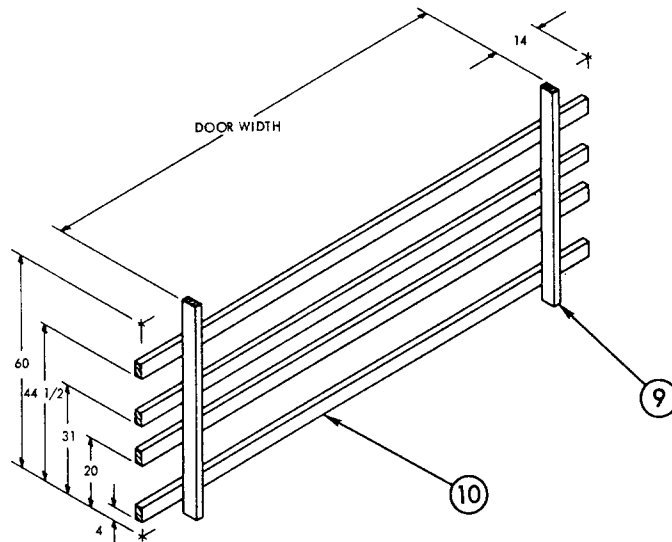
NUMBER OF UNIT LOADS	30
LOAD WEIGHT (APPROXIMATE)	123,720 LBS
DUNNAGE WEIGHT (APPROXIMATE)	2,183 LBS
CARLOAD WEIGHT (APPROXIMATE)	125,903 LBS

MIL-STD-1325-85 (NAVY)



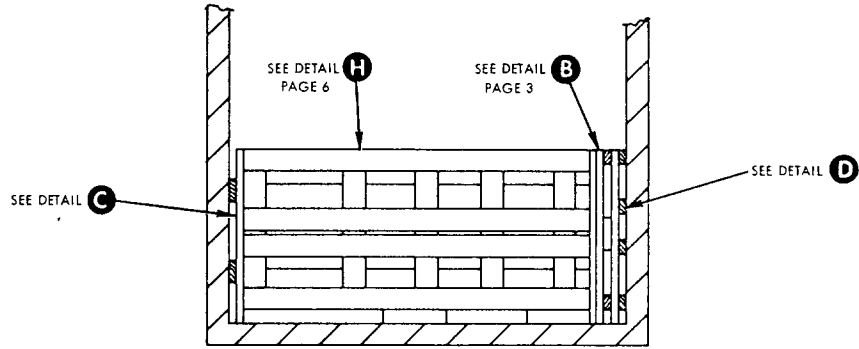
DETAIL C

NOSE END DOORWAY SWAY BRACE
1 REQUIRED

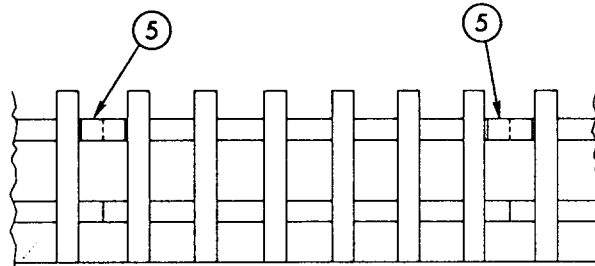


DETAIL D

BASE END DOORWAY PROTECTION
1 REQUIRED

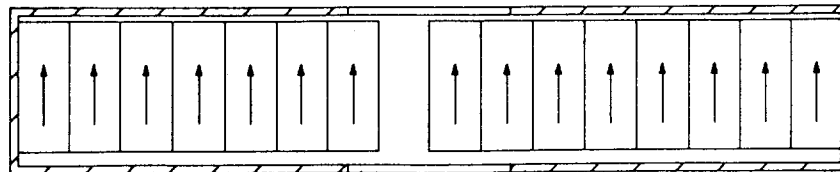


SECTION E-E
(UNIT LOAD OMITTED FOR CLARITY)



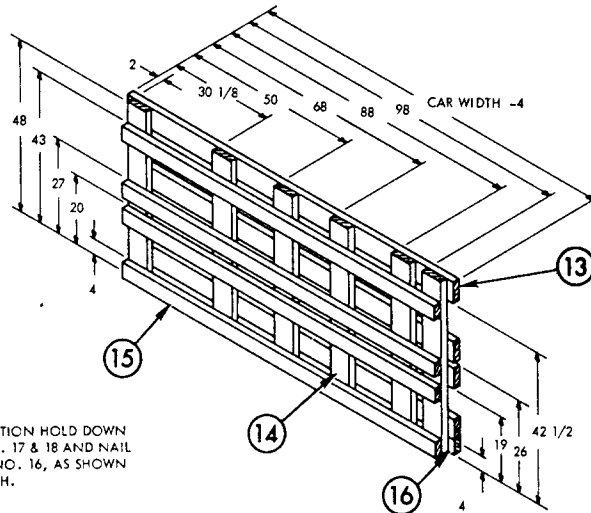
SECTION F-F
SHOWING TIE PIECE ON UPPER HORIZONTAL
UNIT LOADS REMOVED FOR CLARITY

DIRECTION OF ARROW
INDICATED NOSE END
OF BOMB



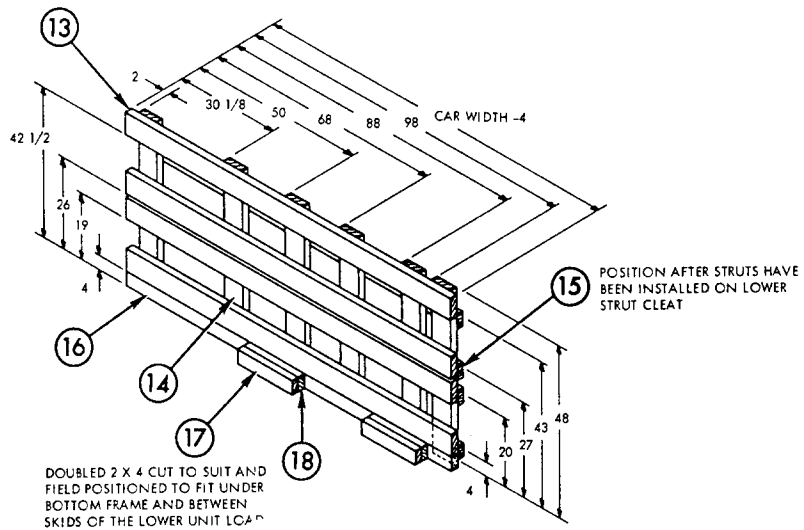
LOADING PLAN

MIL-STD-1325-85 (NAVY)



NOTE: FIELD POSITION HOLD DOWN
PIECES NO. 17 & 18 AND NAIL
TO PIECE NO. 16, AS SHOWN
IN DETAIL H.

DETAIL G
CENTER GATE
1 REQUIRED



DETAIL H
CENTER GATE
1 REQUIRED

REVIEW ACTIVITY
NAVY - OS - AS

PREPARING ACTIVITY
NAVY - OS
(PROJECT NO. 8140-N311)