

**NOTICE  
OF VALIDATION**

**INCH-POUND**

MIL-STD-1325/196  
NOTICE 2  
13 MARCH 1991

**MILITARY STANDARD**

**RAILCAR LOADING DISPENSER AND BOMB, AIRCRAFT  
BU-MK 20 AND MODS (ROCKEYE II) IN CONTAINER  
CNU-319/E UNIT LOAD UNDERWAY REPLENISHMENT**

MIL-STD-1325/196, dated 30 May 1980 and Notice 1, dated 3 September 1982, has been reviewed and determined to be valid for use in acquisition.

Preparing activity:  
Navy-OS

AMSC N/A  
DISTRIBUTION STATEMENT A. Approved for public release; distribution is unlimited.

FSC 8140

MIL-STD-1325-196 (NAVY)  
Notice 1  
3 September 1982

MILITARY STANDARD  
RAILCAR LOADING  
DISPENSER AND BOMB, AIRCRAFT  
CBU-MK 20 AND MODS (ROCKEYE II)  
IN CONTAINER CNU-319/E  
UNIT LOAD UNDERWAY REPLENISHMENT

TO ALL HOLDERS OF MIL-STD-1325-196 (NAVY)

Page 1.

Title block. Add "and CBU-78/B (GATOR)".

Review Activities  
NAVY - OS, AS

Preparing Activity:  
NAVY - OS  
(Project #8140-N576)

# MILITARY STANDARD

MIL-STD-1325-196  
(NAVY)

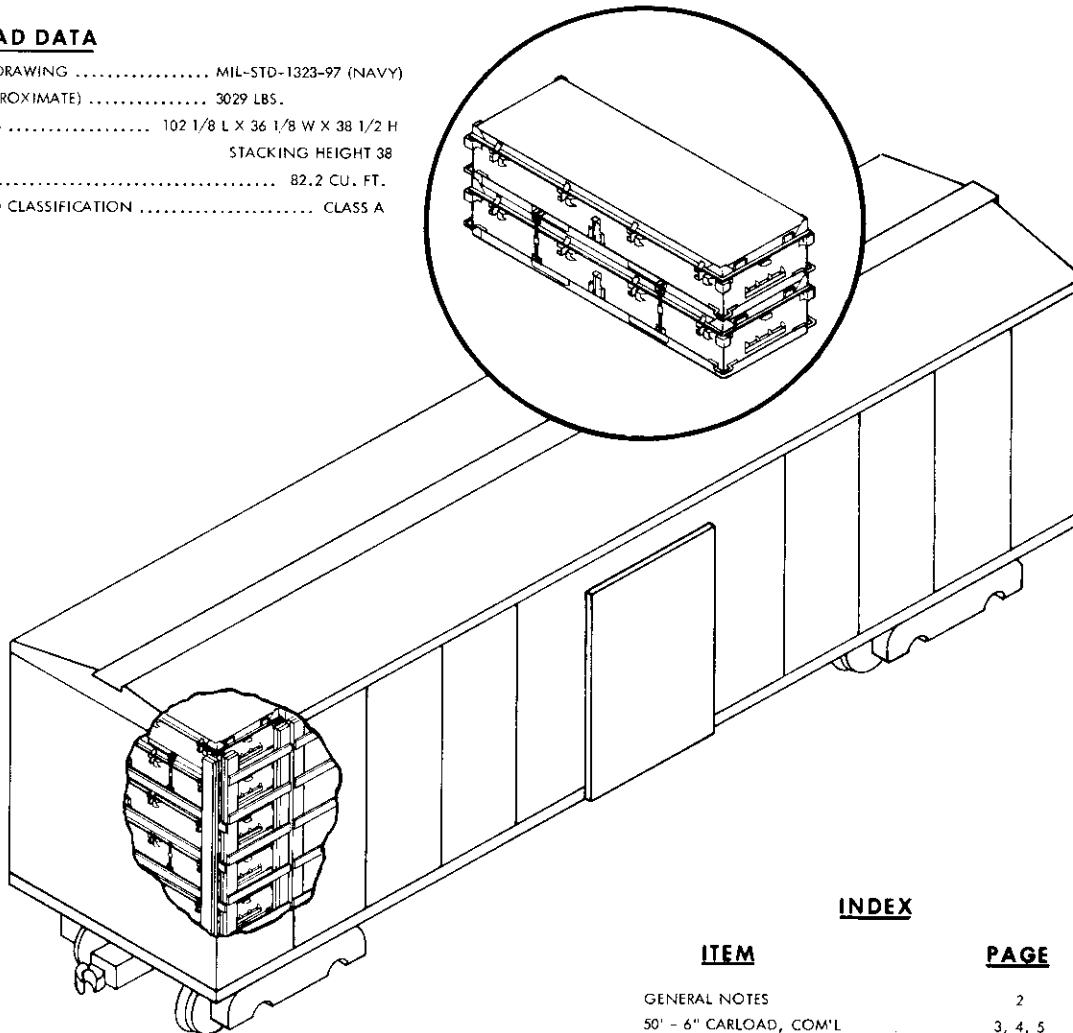
30 MAY 1980

## RAILCAR LOADING

DISPENSER AND BOMB, AIRCRAFT  
CBU-MK 20 AND MODS (ROCKEYE II)  
IN CONTAINER CNU-319/E  
UNIT LOAD UNDERWAY REPLENISHMENT

### UNIT LOAD DATA

UNIT LOAD DRAWING ..... MIL-STD-1323-97 (NAVY)  
WEIGHT (APPROXIMATE) ..... 3029 LBS.  
DIMENSIONS ..... 102 1/8 L X 36 1/8 W X 38 1/2 H  
STACKING HEIGHT 38  
CUBE ..... 82.2 CU. FT.  
DOT HAZARD CLASSIFICATION ..... CLASS A



### INDEX

ITEM	PAGE
GENERAL NOTES	2
50' - 6" CARLOAD, COM'L	3, 4, 5

#### NOTES:

- UNLESS OTHERWISE SPECIFIED DIMENSIONS ARE IN INCHES.
- FOR CROSS REFERENCE TO ASSOCIATED PALLETIZING, TRUCK-LOADING AND CONTAINERLOADING MILITARY STANDARDS, REFER TO INDEX TO STANDARDS MIL-HD-BK-236.

FSC 8140

**AUTHORIZED AND RELEASED FOR  
GENERAL USE.**

**APPROVED BY BUREAU OF EXPLOSIVES**

*M. R. Miller* 5/29/80  
SIGNATURE SUPERVISOR, MILITARY AND INTERMODEL SERVICES DATE

**ORIGINATOR** *Charles McBrine* 5/29/80  
NAVAL WEAPONS HANDLING CENTER DATE  
WPNSTA EARLE, NEW JERSEY

*M. Gray* NWHC 5/29/80  
TECHNICAL DIRECTION AGENT (TDA) DATE  
AIR SYSCOM, BY DIRECTION DATE

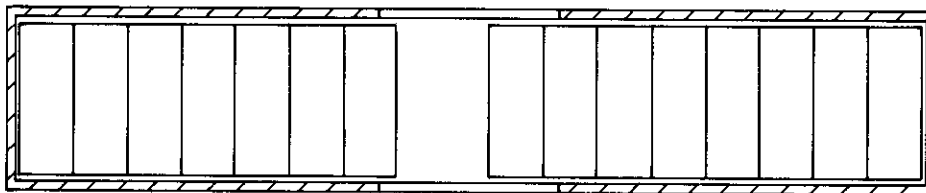
PAGE 1 OF 5

## GENERAL NOTES

1. FOR GENERAL INFORMATION CONCERNING ORDERING, INSPECTING, AND PREPARING CARS, AND FOR DUNNAGING MATERIALS, DESIGN, AND INSTALLATION OF DUNNAGE SEE THE GENERAL DOCUMENT MIL-STD-1325 "RAILCAR LOADING OF HAZARDOUS MATERIALS".
2. WHEN PLANNING SHIPMENTS ORDER THE MINIMUM NUMBER OF CARS OF THE CAPACITY REQUIRED FOR THE SHIPMENT.
3. LOADING PLANS SHOWN ARE FOR COMMERCIAL BOXCARS WITH 50 FEET 6 INCHES INSIDE LENGTH, 110 INCHES INSIDE WIDTH AND WITH DOORS NOT LESS THAN 10 FEET WIDE.
4. THE "LOAD LIMIT" OF A CAR MUST NOT BE EXCEEDED NOR SHOULD THE RAILCAR BE LOADED SO THAT MORE THAN ONE-HALF OF THE "LOAD LIMIT" IS CARRIED BY ONE SET OF TRUCKS.
5. IF END WALLS OF CARS ARE NOT SQUARE THEY MUST BE SQUARED OFF BEFORE STARTING TO LOAD CAR.
6. THE LOAD CONSISTS OF AIRCRAFT DISPENSER AND BOMB CBU MK 20 AND MODS (ROCKEYE II) IN CONTAINER CNU-319/E UNITIZED IN ACCORDANCE WITH MIL-STD-1323-97.
7. THE UNIT LOADS ARE HANDLED AND LOADED WITH A SUITABLE FORKLIFT TRUCK.
8. UNLESS OTHERWISE SPECIFIED NAILING SHALL BE IN ACCORDANCE WITH MIL-STD-1325.
9. UNLESS OTHERWISE SPECIFIED, ALL MATERIAL SHALL BE AS SPECIFIED IN THE GENERAL DOCUMENT, MIL-STD-1325.
10. AFTER BLOCKING AND BRACING HAS BEEN INSPECTED ATTACH SHIPPING DOCUMENTS INSIDE THE CAR IN AN ACCESSIBLE AREA, CLOSE AND SEAL BOXCAR DOORS, AND ATTACH EXPLOSIVE "A" PLACARDS TO THE OUTSIDE OF CAR AS PRESCRIBED IN OP 2165 (VOL I).

## 50 FT 6 IN BOXCAR, COMMERCIAL

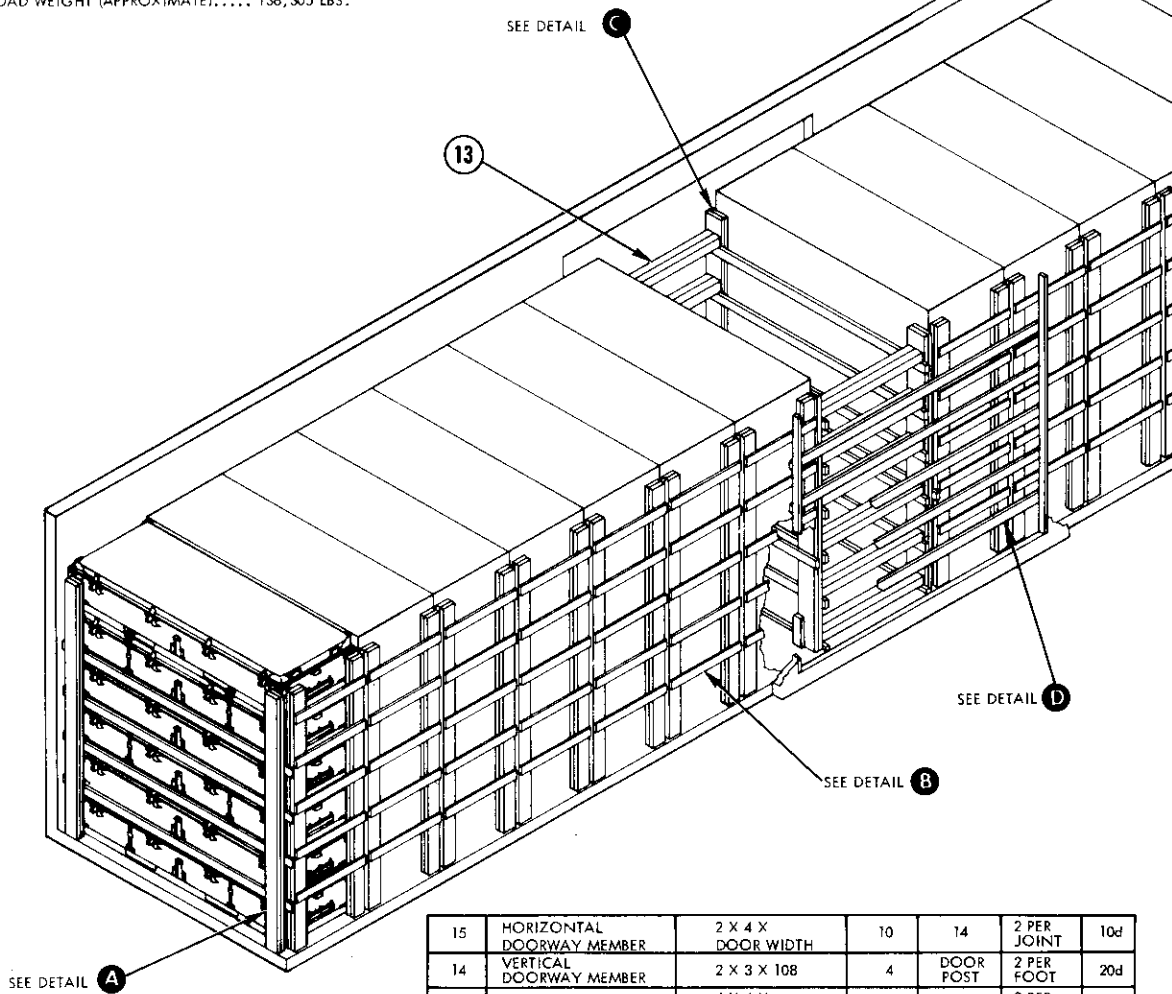
1. THE CARLOAD CONSISTS OF EITHER 45 UNIT LOADS (THREE LAYER HIGH CARLOAD), WHEN THE LOAD LIMIT AND THE DOORWAY OPENING OF THE BOXCAR ARE ADEQUATE, OR 30 UNIT LOADS (TWO LAYER HIGH CARLOAD) WHEN LOAD LIMIT OR DOORWAY OPENING ARE INADEQUATE.
2. WHEN LESS THAN CARLOAD (LCL) QUANTITIES ARE REQUIRED TO BE SHIPPED IN COMMERCIAL BOXCARS AND A PARTIAL LAYER RESULTS, THE PARTIAL LAYER OF LADING SHALL BE BRACED BY MEANS OF END BRACING AND/OR PARTIAL LAYER BRACING CONSTRUCTED IN ACCORDANCE WITH MIL-STD-1325-100 OR PARTIAL UPPER LAYER BRACING IN ACCORDANCE WITH MIL-STD-1325-102. SELECT THE TYPE OF BRACE TO COMPLY WITH THE WEIGHT OF THE UNITS TO BE RETAINED. THE WEIGHT DISTRIBUTION REQUIREMENTS OF THE AAR MUST BE COMPLIED WITH, SEE MIL-STD-1325.
3. THE LOADS AS SHOWN ARE BASED ON CARS WHICH HAVE 10 FT. WIDE DOORWAY OPENINGS AND ARE EQUIPPED WITH CONVENTIONAL SLIDING TYPE DOORS. THE DEPICTED PROCEDURES AND METHODS OF BLOCKING ARE ALSO APPLICABLE TO BOXCARS EQUIPPED WITH CONVENTIONAL SLIDING TYPE DOORS GREATER THAN 10 FT. WIDE.
4. THE DEPICTED PROCEDURES AND METHODS OF BLOCKING ARE ALSO APPLICABLE TO BOXCARS EQUIPPED WITH PLUG DOORS. DIMENSIONAL LUMBER DOORWAY PROTECTION, PIECES 14 AND 15, IS NOT REQUIRED WHEN PLUG DOOR EQUIPPED BOXCARS ARE USED EXCEPT WHEN CAR HAS A COMBINATION OF PLUG DOOR AND CONVENTIONAL SLIDING DOOR. THE DIMENSIONAL LUMBER DOORWAY PROTECTION IS REQUIRED FOR THE CONVENTIONAL DOOR. PLUG DOORS MUST BE SECURELY CLOSED AND WIRED TOGETHER WITH A STRONG FLEXIBLE STEEL WIRE INSERTED THROUGH THE HOLES IN THE DOOR LATCH ASSEMBLY ONE OR MORE TIMES AND THE WIRE ENDS TWISTED TOGETHER.
5. WHEN BOXCARS OTHER THAN 9 FT 2 IN WIDE ARE USED, PIECES 4 OR 6 SHOULD BE INCREASED OR DECREASED AS NECESSARY FOR ACROSS CAR VOID NOT TO EXCEED 1/2 INCH EACH SIDE.



LOADING PLAN

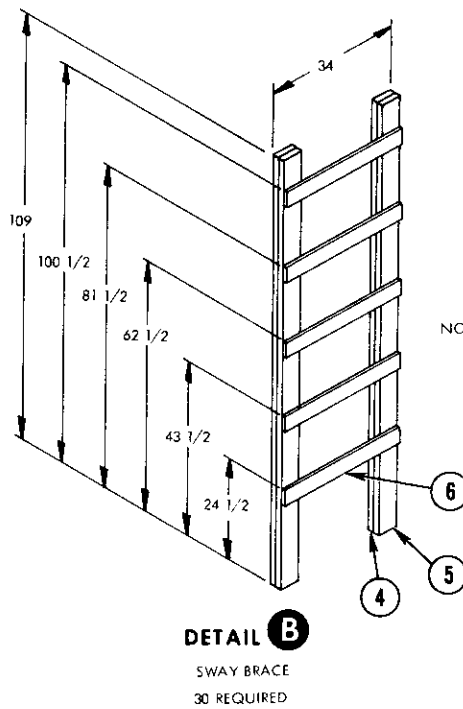
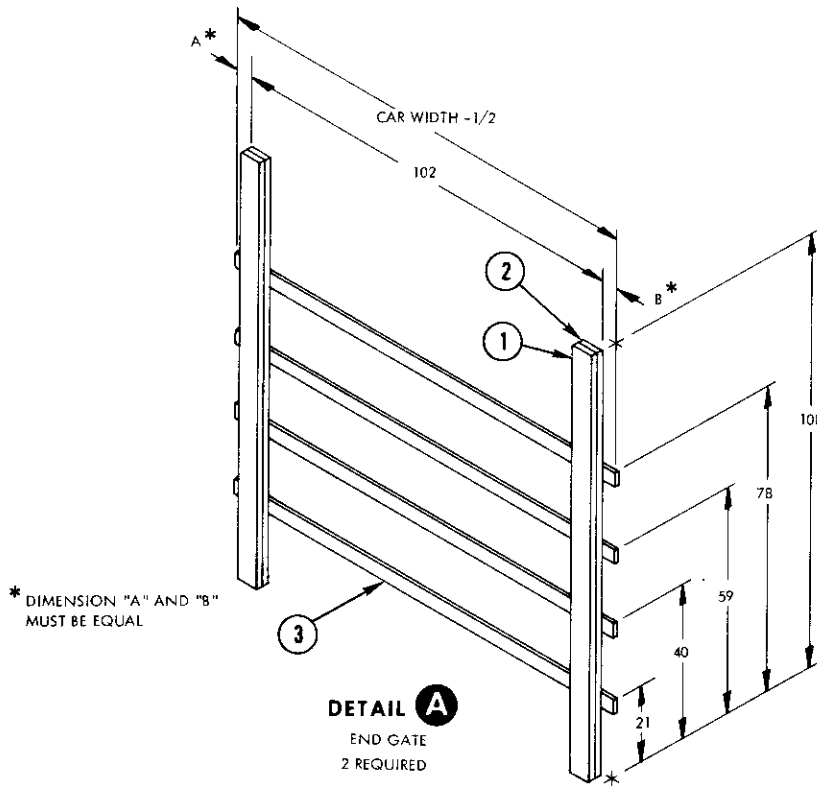
**CARLOAD DATA**

NUMBER OF UNIT LOADS..... 45  
 LOAD WEIGHT (APPROXIMATE)..... 136,305 LBS.

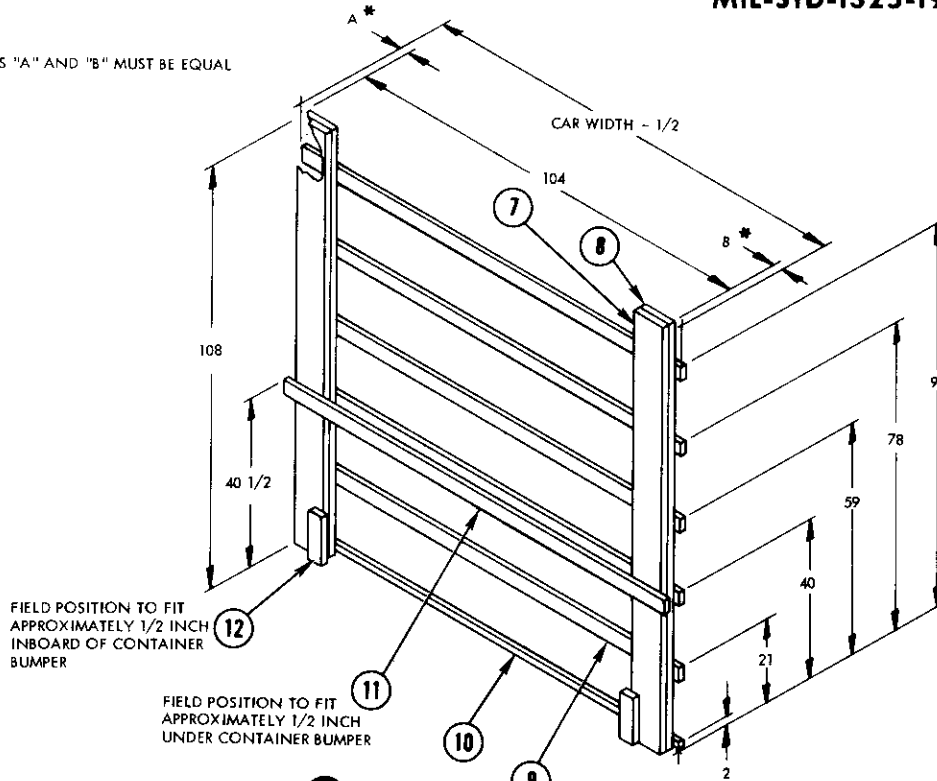


15	HORIZONTAL DOORWAY MEMBER	2 X 4 X DOOR WIDTH	10	14	2 PER JOINT	10d
14	VERTICAL DOORWAY MEMBER	2 X 3 X 108	4	DOOR POST	2 PER FOOT	20d
13	STRUT	4 X 4 X WEDGE FIT	24	8	2 PER JOINT	16d
12	CENTER GATE SWAY CLEAT	2 X 4 X 12	4	7	3	10d
11	CENTER GATE HOLD DOWN	2 X 4 X CAR WIDTH - 1/2	2	7	3 PER JOINT	10d
10	CENTER GATE STRUT CLEAT	2 X 2 X CAR WIDTH - 1/2	2	8	2 PER JOINT	10d
9	CENTER GATE STRUT CLEAT	2 X 4 X CAR WIDTH - 1/2	10	8	3 PER JOINT	10d
8	CENTER GATE VERTICAL	2 X 8 X 108	4	SEE 9 & 10	-	-
7	CENTER GATE VERTICAL	2 X 8 X 108	4	8	1 PER FOOT	10d
6	SWAY BRACE HORIZONTAL	1 X 4 X 34	150	5	3 PER JOINT	10d
5	SWAY BRACE VERTICAL	2 X 6 X 109	60	SEE 4	-	-
4	SWAY BRACE VERTICAL	2 X 6 X 109	60	5	1 PER FOOT	10d
3	END GATE HORIZONTAL	1 X 4 X CAR WIDTH - 1/2	8	2	3 PER JOINT	10d
2	END GATE VERTICAL	2 X 6 X 108	4	SEE 1	-	-
1	END GATE VERTICAL	2 X 6 X 108	4	2	1 PER FOOT	10d
PIECE NO.	DESCRIPTION	SIZE	NO. OF PIECES REQ'D	NAIL TO	NUMBER	SIZE
						NAILS
LIST OF MATERIALS & NAILING DATA						

MIL-STD-1325-196 (NAVY)



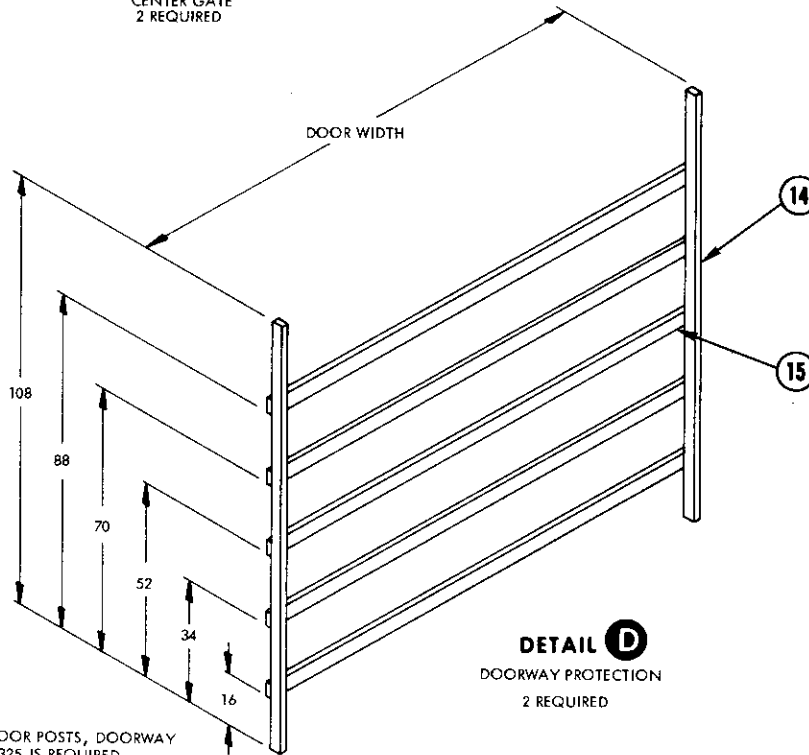
\* DIMENSIONS "A" AND "B" MUST BE EQUAL



FIELD POSITION TO FIT APPROXIMATELY 1/2 INCH INBOARD OF CONTAINER BUMPER

FIELD POSITION TO FIT APPROXIMATELY 1/2 INCH UNDER CONTAINER BUMPER

**DETAIL C**  
CENTER GATE  
2 REQUIRED



**DETAIL D**  
DOORWAY PROTECTION  
2 REQUIRED

WHEN BOXCAR HAS STEEL DOOR POSTS, DOORWAY PROTECTION PER MIL-STD-1325 IS REQUIRED.

REVIEW ACTIVITY  
NAVY - OS, AS

PREPARING ACTIVITY  
NAVY - OS  
(PROJECT NO. 8140 - N 463)