

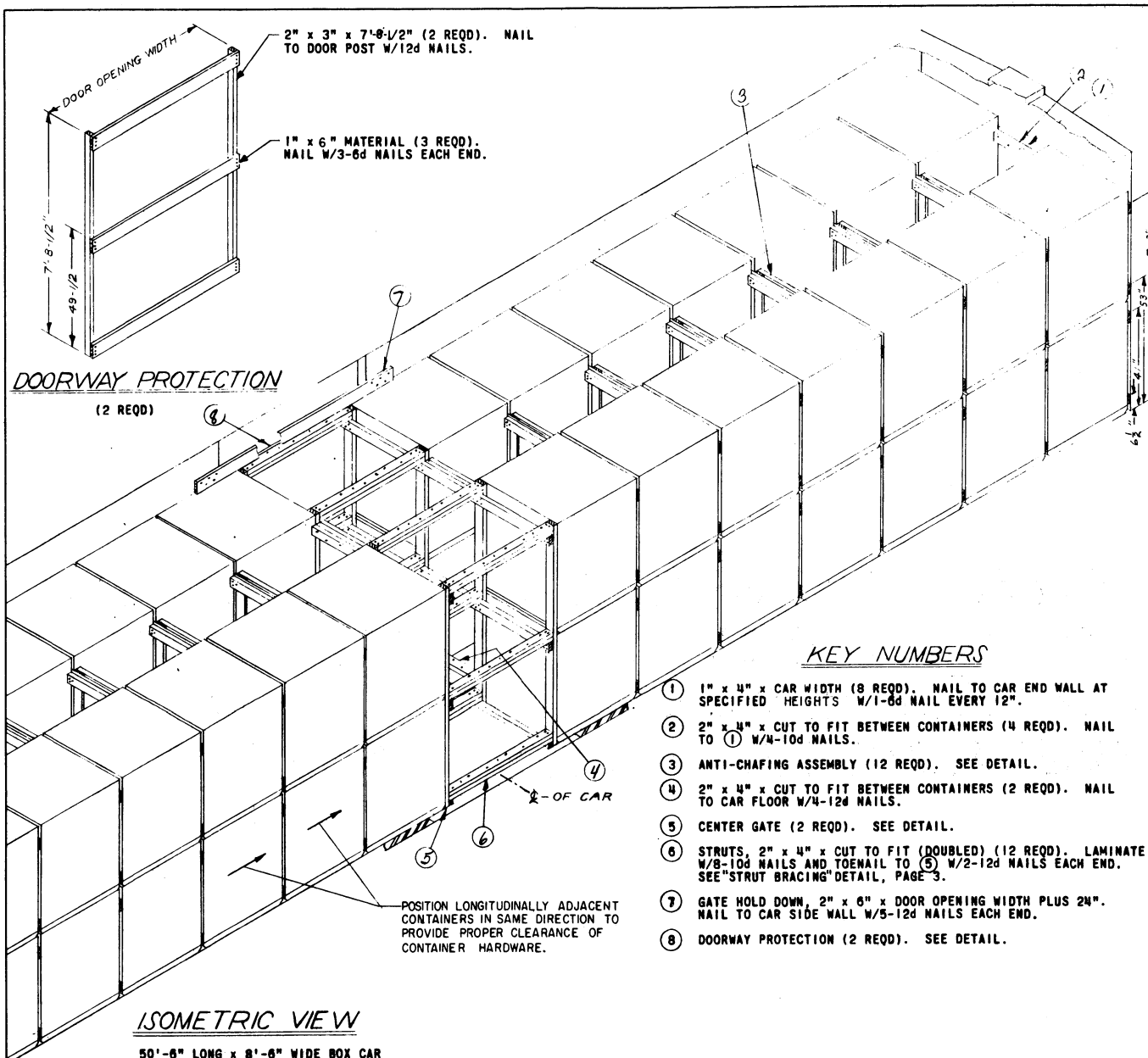
REVISION NO. 1 APPROVED
 BUREAU OF EXPLOSIVES
B. F. Grossmuck
 MILITARY ASSISTANT
 DATE 10/8/64

LOADING AND BRACING (CL & LCL) IN BOX CAR OF THRUST STRUCTURE, PACKED ONE PER WOODEN BOX, FOR THE NIKE-HERCULES GUIDED MISSILE

LOADING AND BRACING (CL & LCL) IN BOX CAR OF THRUST STRUCTURE, PACKED ONE PER WOODEN BOX, FOR THE NIKE-HERCULES GUIDED MISSILE

DRAFTSMAN D.L.N.	AMCPM-HP-SP CHECKER	ENGINEER DIW ENGINEER	REVISIONS
<i>ENP</i>	<i>109</i>	<i>AGE</i> <i>AAJ</i>	<i>B. B. Abram</i> COMMANDER, SAVANNAH ARMY DEPOT
REVISIONS			APPROVED
1	5 MAY 64	<i>Drawn</i>	<i>Andrew W. Reid</i> ARMY MISSILE COMMAND
			APPROVED BY ORDER OF COMMANDER, ARMY MATERIEL COMMAND <i>George J. Holly</i> Col. G.S. ARMY SUPPLY & MAINTENANCE COMMAND
			MATERIEL COMMAND U.S.A.
			8 APRIL 1958
			CLASS DIVISION DRAWING FILE
			19 48 5365 GM5A63

DO NOT SCALE



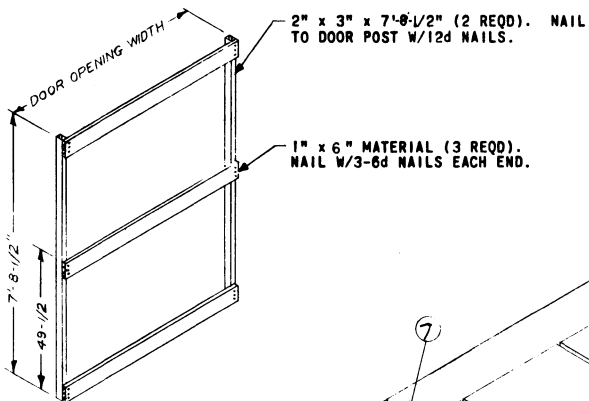
ISOMETRIC VIEW

50'-6" LONG x 8'-6" WIDE BOX CAR

KEY NUMBERS

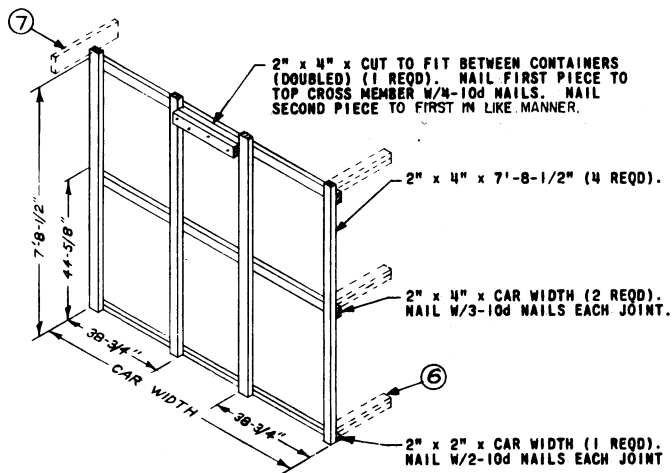
- ① 1" x 4" x CAR WIDTH (8 REQD). NAIL TO CAR END WALL AT SPECIFIED HEIGHTS W/1-6d NAIL EVERY 12".
- ② 2" x 4" x CUT TO FIT BETWEEN CONTAINERS (4 REQD). NAIL TO ① W/4-10d NAILS.
- ③ ANTI-CHAFING ASSEMBLY (12 REQD). SEE DETAIL.
- ④ 2" x 4" x CUT TO FIT BETWEEN CONTAINERS (2 REQD). NAIL TO CAR FLOOR W/4-12d NAILS.
- ⑤ CENTER GATE (2 REQD). SEE DETAIL.
- ⑥ STRUTS, 2" x 4" x CUT TO FIT (DOUBLED) (12 REQD). LAMINATE W/8-10d NAILS AND TOENAIL TO ⑤ W/2-12d NAILS EACH END. SEE "STRUT BRACING" DETAIL, PAGE 3.
- ⑦ GATE HOLD DOWN, 2" x 6" x DOOR OPENING WIDTH PLUS 24". NAIL TO CAR SIDE WALL W/5-12d NAILS EACH END.
- ⑧ DOORWAY PROTECTION (2 REQD). SEE DETAIL.

POSITION LONGITUDINALLY ADJACENT CONTAINERS IN SAME DIRECTION TO PROVIDE PROPER CLEARANCE OF CONTAINER HARDWARE.



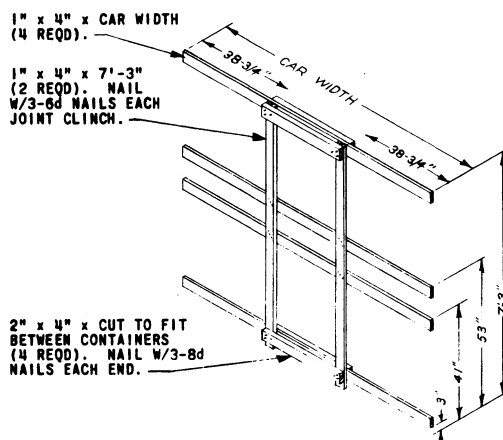
DOORWAY PROTECTION

(2 REQD)



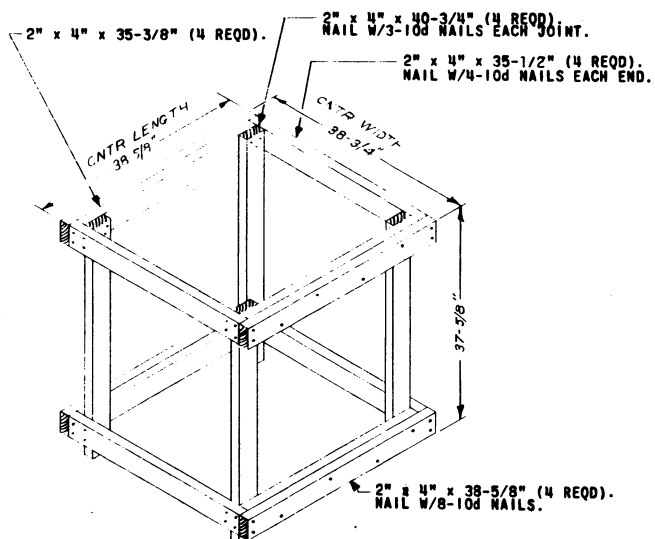
CENTER GATE

(2 REQD)



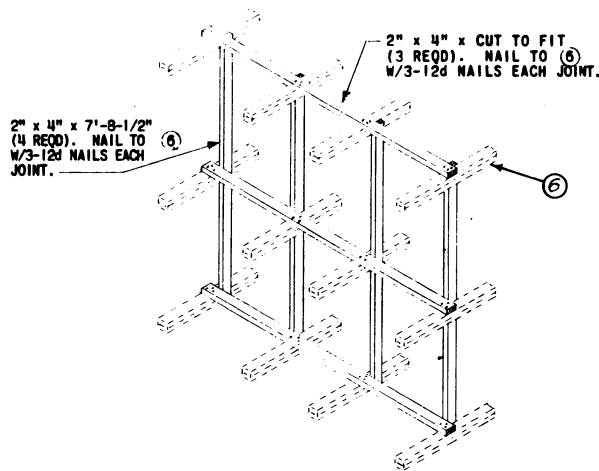
ANTI-CHAFING ASSEMBLY

(12 REQD)



FILLER ASSEMBLY

TO BE USED IN PLACE OF AN OMITTED CONTAINER.
POSITION NEAR CENTER OF LOAD IN TOP LAYER.



STRUT BRACING

FOR STRUTS 48" OR GREATER IN LENGTH.
POSITION EVERY 48".

GENERAL NOTES

- A. LOAD AS SHOWN IS BASED ON A BOX CAR 50'-6" LONG X 8'-6" WIDE WITH 8'-0" (MIN) DOORWAY OPENING.
- B. SELECTION OF RAIL CARS FOR THE TRANSPORT OF THIS ITEM WILL BE IN ACCORDANCE WITH PARAGRAPH 8,300.4, ORDM 3-4, VOL 3.
- C. NOTICE: A SHIPMENT WILL BE POSITIONED IN THE RAIL CAR IN COMPLIANCE WITH THE WEIGHT DISTRIBUTION REQUIREMENTS OF THE AAR. THE NUMBER OF UNITS MAY BE ADJUSTED TO FIT THE RAIL CAR CONCERNED OR THE QUANTITY TO BE SHIPPED; HOWEVER, THE APPROVED METHODS CONTAINED HEREIN FOR FULL OR PARTIAL CARLOAD MUST BE FOLLOWED FOR BLOCKING, BRACING AND STAYING OF THIS ITEM.
- D. FOR DETAIL OF CONTAINER SEE DRAWING NO. 8524213.
CONTAINER DIMENSIONS - 38-5/8" LONG X 38-3/4" WIDE X 46-1/4" HIGH.
GROSS WEIGHT - 321 POUNDS (APPROX).
- E. SPECIFIED OUTLOADING PROCEDURES CAN ALSO BE UTILIZED FOR THE SHIPMENT OF THE DEPICTED CONTAINERS WHEN THEY ARE EMPTY OR LOADED WITH AN ITEM WHICH IS IDENTIFIED DIFFERENTLY BY NOMENCLATURE THAN THE ITEM DESIGNATED WITHIN THE DRAWING TITLE.
- F. FOR AUTHORIZED METHODS OF BRACING PARTIAL LAYERS, SEE ORD CORPS DRAWING 19-48-2213-5P34.
- G. USE COMBINATION OF LOADING PROCEDURES SHOWN HEREIN TO PROVIDE PROPER BLOCKING AND BRACING FOR THE UNIT QUANTITIES NOT DEPICTED.
- H. FOR THE SHIPMENT OF A SMALLER LOAD, IF THE LOAD IS REDUCED BY ONE (1) THRU THREE (3) CONTAINERS IT WILL BE NECESSARY TO SUBSTITUTE A "FILLER" ASSEMBLY (SEE DETAIL, ABOVE) IN PLACE OF AN OMITTED CONTAINER, TO PROVIDE A TIGHT LOAD. INSTALL "FILLER(S)" IN TOP LAYER OF LOAD.

BILL OF MATERIAL (8'-6")

LUMBER	LINEAL FEET	BOARD FEET
1" x 4"	650	217
1" x 6"	36	18
2" x 2"	17	6
2" x 3"	31	16
2" x 4"	317	212
2" x 6"	16	16
NAILS	NO. REQD	POUNDS
6d (2")	396	2-1/2
8d (2-1/2")	288	3
10d (3")	176	2-2/3
12d (3-1/4")	92	1-3/4

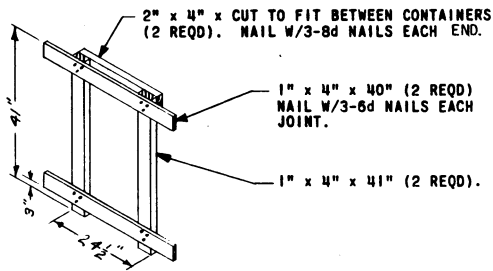
FOR A 9'-2" CAR ADD 39 BOARD FEET OF LUMBER.

MATERIAL SPECIFICATIONS

LUMBER: SEE PARAGRAPH 8,400, ORDM 3-4, VOL 3.
NAILS: COMMON, CEMENT COATED, FED SPEC FF-N-105.
ALT: ANNULAR-RING TYPE NAIL OF SAME SIZE.

LOAD AS SHOWN

ITEM	QUANTITY	WEIGHT (APPROX)
THRUST STRUCTURE	56	17,976 LBS
DUNNAGE		1,223 LBS
TOTAL WEIGHT		19,199 LBS (APPROX)

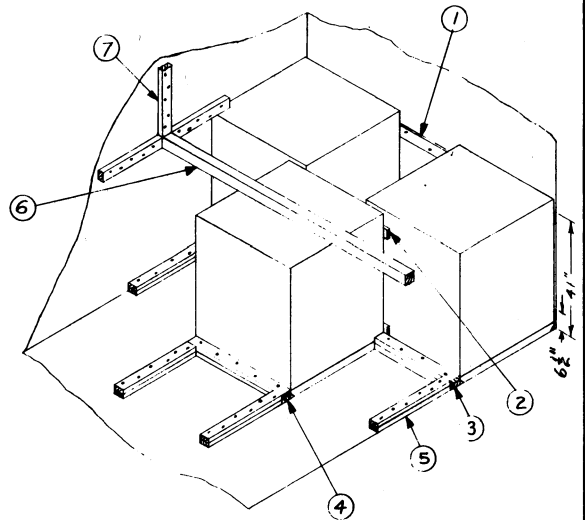


ANTI-CHAFING ASSEMBLY

(1 REQD)

KEY NUMBERS

- ① 1" x 4" x CAR WIDTH (2 REQD). NAIL TO CAR END WALL AT SPECIFIED HEIGHTS. W/1-6d NAIL EVERY 12".
- ② ANTI-CHAFING ASSEMBLY (1 REQD). SEE DETAIL, ABOVE.
- ③ 2" x 4" x 31-5/8" (DOUBLED) (2 REQD). NAIL FIRST PIECE TO CAR FLOOR W/4-16d NAILS. NAIL SECOND PIECE TO FIRST W/4-40d NAILS.
- ④ 2" x 4" x 38-3/4" (DOUBLED) (1 REQD). NAIL FIRST PIECE TO CAR FLOOR W/5-16d NAILS. NAIL SECOND PIECE TO FIRST W/6-40d NAILS.
- ⑤ 2" x 4" x 30" (DOUBLED) (4 REQD). NAIL FIRST PIECE TO CAR FLOOR W/6-16d NAILS. NAIL SECOND PIECE TO FIRST W/6-40d NAILS. SEE NOTE (●).
- ⑥ 4" x 4" x CAR WIDTH (1 REQD). POSITION AS SHOWN.
- ⑦ 2" x 4" x 24" (6 REQD). NAIL TO CAR SIDE WALL W/5-12d NAILS.



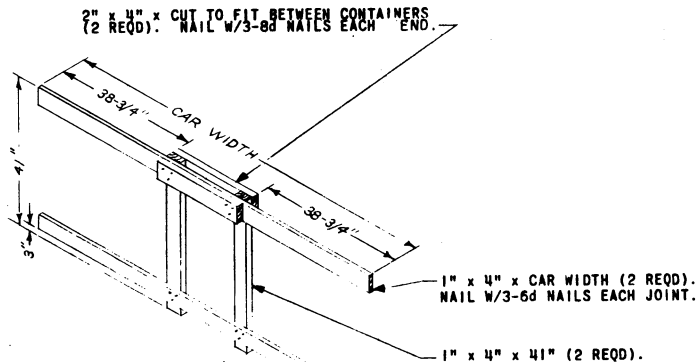
TYPICAL LCL

8'-6" WIDE CAR SHOWN
THREE UNIT LOAD

NOTE (●):
THE FOUR (4) BACK UP CLEATS, SHOWN AS PIECE (⑤), ARE ADEQUATE FOR RETAINING A MAXIMUM LCL LOAD OF 17,500 POUNDS.

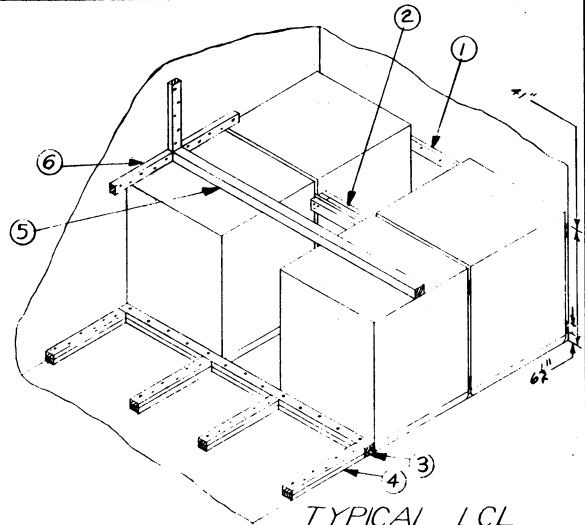
KEY NUMBERS

- ① 1" x 4" x CAR WIDTH (2 REQD). NAIL TO CAR END WALL AT SPECIFIED HEIGHTS W/1-6d NAIL EVERY 12".
- ② ANTI-CHAFING ASSEMBLY (1 REQD). SEE DETAIL.
- ③ 2" x 4" x CAR WIDTH (DOUBLED) (1 REQD). NAIL FIRST PIECE TO CAR FLOOR W/1-16d NAIL EVERY 8". NAIL SECOND PIECE TO FIRST W/1-40d NAIL EVERY 8".
- ④ 2" x 4" x 30" (DOUBLED) (4 REQD). NAIL FIRST PIECE TO CAR FLOOR W/6-16d NAILS. NAIL SECOND PIECE TO FIRST W/6-40d NAILS. SEE NOTE (⊕):
- ⑤ 4" x 4" x CAR WIDTH (1 REQD). POSITION AS SHOWN.
- ⑥ 2" x 4" x 24" (6 REQD). NAIL TO CAR SIDE WALL W/5-12d NAILS.



ANTI-CHAFING ASSEMBLY

(1 REQD)



TYPICAL LCL

FOUR UNIT LOAD

NOTE (⊕):
THE FOUR (4) BACK UP CLEATS, SHOWN AS PIECE (④), ARE ADEQUATE FOR RETAINING A MAXIMUM LCL LOAD OF 17,500 POUNDS.