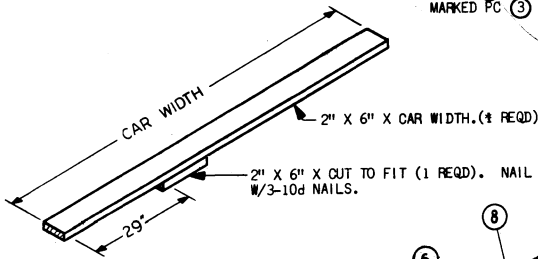
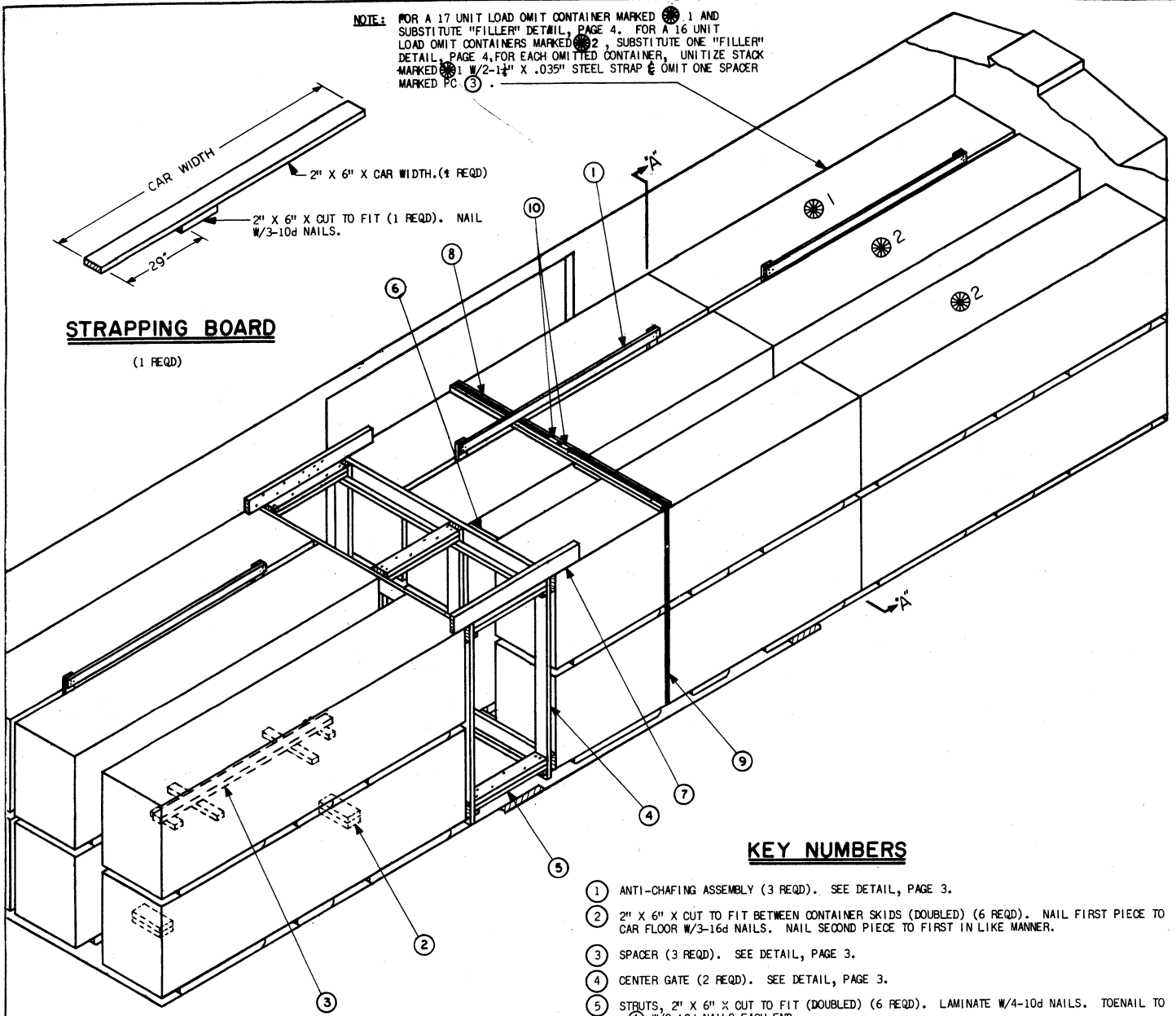


NOTE: FOR A 17 UNIT LOAD OMIT CONTAINER MARKED 1 AND SUBSTITUTE "FILLER" DETAIL, PAGE 4. FOR A 16 UNIT LOAD OMIT CONTAINERS MARKED 2, SUBSTITUTE ONE "FILLER" DETAIL, PAGE 4, FOR EACH OMITTED CONTAINER. UNITIZE STACK MARKED 1 W/2-1 1/4" X .035" STEEL STRAP & OMIT ONE SPACER MARKED PC 3.



STRAPPING BOARD

(1 REQD)



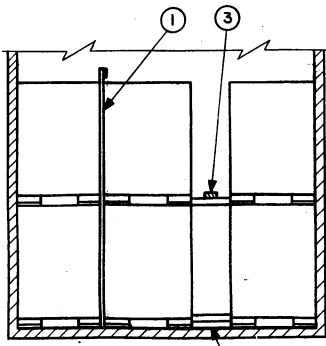
ISOMETRIC VIEW

KEY NUMBERS

- ① ANTI-CHAFING ASSEMBLY (3 REQD). SEE DETAIL, PAGE 3.
- ② 2" X 6" X CUT TO FIT BETWEEN CONTAINER SKIDS (DOUBLED) (6 REQD). NAIL FIRST PIECE TO CAR FLOOR W/3-16d NAILS. NAIL SECOND PIECE TO FIRST IN LIKE MANNER.
- ③ SPACER (3 REQD). SEE DETAIL, PAGE 3.
- ④ CENTER GATE (2 REQD). SEE DETAIL, PAGE 3.
- ⑤ STRUTS, 2" X 6" X CUT TO FIT (DOUBLED) (6 REQD). LAMINATE W/4-10d NAILS. TOENAIL TO ④ W/2-12d NAILS EACH END.
- ⑥ 2" X 4" X CUT TO FIT (2 REQD). NAIL TO ④ W/3-10d NAILS.
- ⑦ GATE HOLD DOWN, 2" X 6" X 60" (2 REQD). NAIL TO CAR SIDE WALL W/10-12d NAILS.
- ⊕ ⑧ STRAPPING BOARD (1 REQD). SEE DETAIL, THIS PAGE.
- ⊕ ⑨ STEEL STRAPPING, 1 1/4" X .035" X 32'-0" (1 REQD). STAPLE TO PC ⑧ W/3-STAPLES.
- ⊕ ⑩ SEALS FOR 1 1/4" STEEL STRAPPING, (2 REQD). SEE GENERAL NOTE "D", PAGE 3.

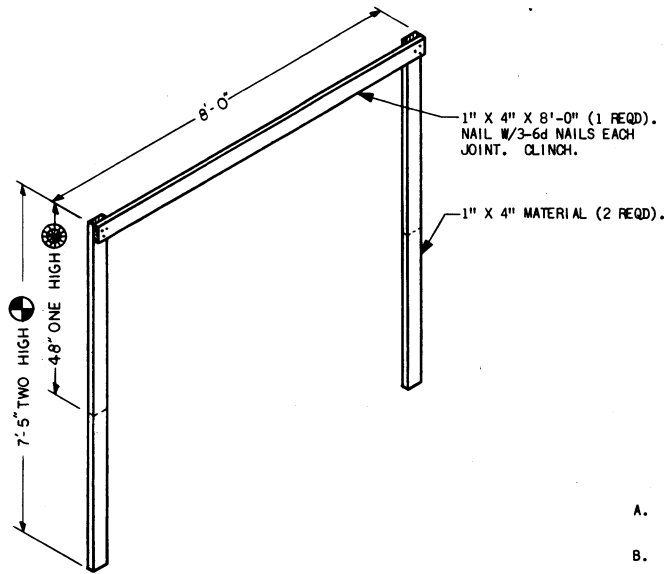
⊕ PCS ⑧ AND ⑨ REQUIRED FOR DOORWAY PROTECTION.

■ IF A CAR WITH A DOORWAY OPENING GREATER THAN 10 FEET WIDE IS USED FOR THE SHIPMENT OF THE DEPICTED CARLOAD, THE LENGTH OF PIECE ⑦ MUST BE INCREASED TO EQUAL THE DOORWAY WIDTH PLUS TWO FEET (2'). THIS LONGER PIECE ⑦ WILL BE POSITIONED TO SPAN THE DOORWAY AND WILL BE NAILED AT EACH END WITH FIVE (5) 12d NAILS AND FASTENED TO THE INTERMEDIATE DOOR POST, IF PRESENT, BY NAILING OR WIRE TYING.

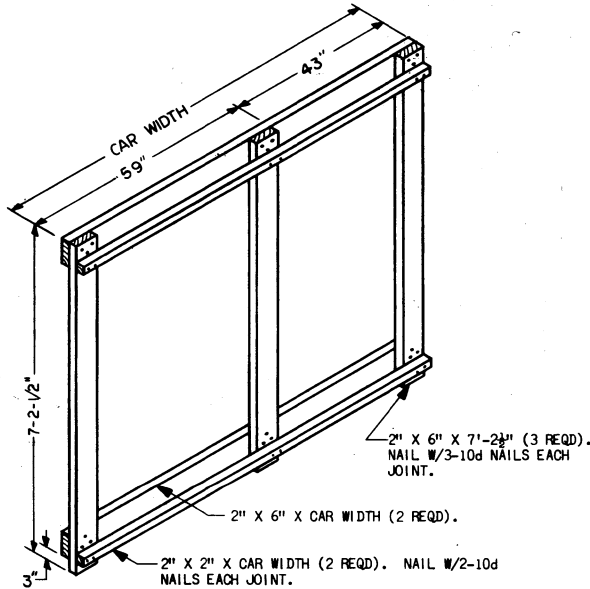


SECTION "A-A"

- 7'-7" WHEN USED WITH STRAPPING BOARD.
- 5'11" WHEN USED WITH "FILLER" DETAIL, PAGE 4.



ANTI-CHAFING ASSEMBLY



CENTER GATE

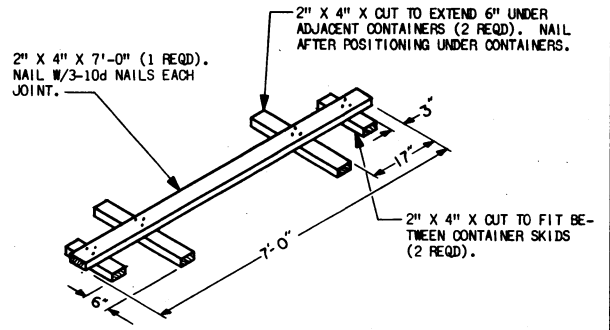
(2 REQD. ONE RIGHT HAND AS SHOWN AND ONE LEFT HAND)

BILL OF MATERIAL

LUMBER	LINEAL FEET	BOARD FEET
1" X 4"	69	23
2" X 2"	34	11
2" X 4"	45	30
2" X 6"	149	149
NAILS	NO. REQUIRED	POUNDS
6d (2")	18	—
10d (3")	129	2
12d (3 1/2")	44	3/4
16d (4")	36	1
STEEL STRAPPING, 1 1/2" X .035"	32' 0" REQD	5 LBS
SEALS FOR 1 1/2" STEEL STRAPPING	2 REQD	
STAPLES FOR 1 1/2" STEEL STRAPPING	3 REQD	

MATERIAL SPECIFICATIONS

LUMBER: FED SPEC MM-L-751
 NAILS: COMMON, CEMENT COATED, FED SPEC FF-N-105.
 ALT: ANNULAR-RING TYPE NAIL OF SAME SIZE.
 STRAPPING, STEEL: TYPE 1, CLASS "A" OR "C", FED SPEC QQ-S-781.
 FOR FSN SEE SB-38-100.



SPACER

GENERAL NOTES

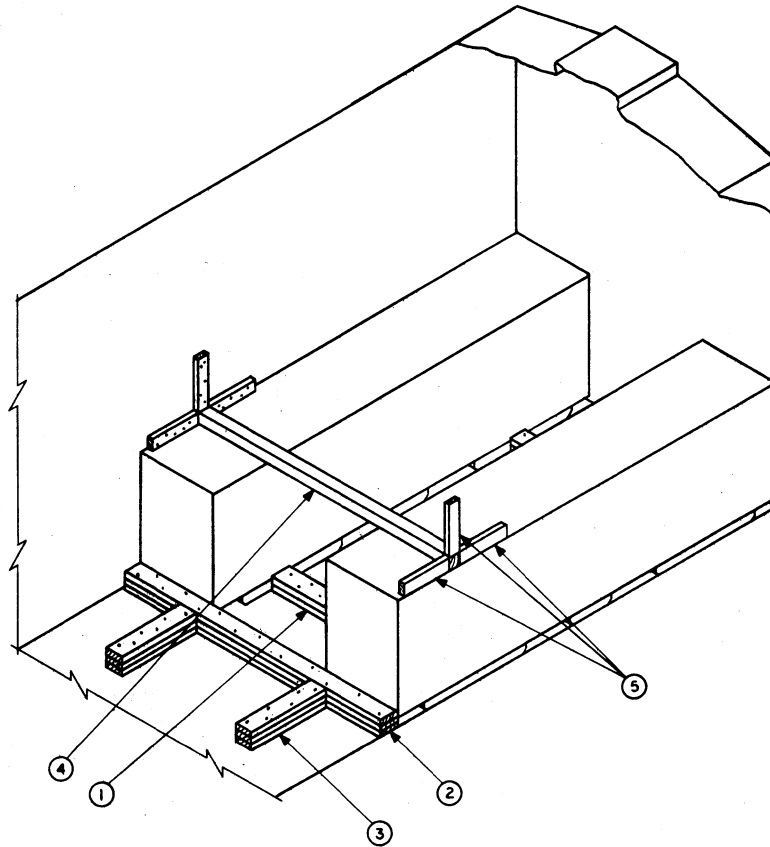
- LOAD AS SHOWN IS BASED ON BOX CAR 40'-6" LONG X 8'-6" WIDE WITH 10'-0" (MIN) DOORWAY OPENING.
- NOTICE: A SHIPMENT WILL BE POSITIONED IN THE RAILCAR IN COMPLIANCE WITH THE WEIGHT DISTRIBUTION REQUIREMENTS OF THE AAR. THE NUMBER OF UNITS MAY BE ADJUSTED TO FIT THE RAILCAR CONCERNED OR THE QUANTITY TO BE SHIPPED; HOWEVER, THE APPROVED METHODS CONTAINED HEREIN FOR FULL OR PARTIAL CARLOAD MUST BE FOLLOWED FOR BLOCKING, BRACING AND STAYING OF THIS ITEM.
- FOR DETAIL OF M31 CONTAINER SEE DRAWING 8524211.
 CONTAINER DIMENSIONS----- 147 1/2" L X 29" W X 42-1/8" H
 GROSS WEIGHT----- 1,050 LBS (APPROX).
 TARE WEIGHT----- 545 LBS (APPROX).
- WHEN ANY STRAP IS SEALED AT AN END-OVER-END LAP JOINT, A MINIMUM OF TWO (2) SEALS WITH TWO (2) CRIMPS PER SEAL MUST BE USED.
- SPECIFIED OUTLOADING PROCEDURES CAN ALSO BE UTILIZED FOR THE SHIPMENT OF THE DEPICTED CONTAINERS WHEN THEY ARE EMPTY OR LOADED WITH AN ITEM WHICH IS IDENTIFIED DIFFERENTLY BY NOMENCLATURE THAN THE ITEM DESIGNATED WITHIN THE DRAWING TITLE.
- FOR AUTHORIZED METHODS OF BRACING PARTIAL LAYERS, SEE ORD CORPS DRAWING 19-48-2213-5P34. FOR OMISSION OF ONE OR TWO CONTAINERS, SEE "FILLER" DETAIL, PAGE 4.

REVISION

REV NO. 1, 22 SEPT 1965, CONTR DIMENSION CHANGE TO CONFORM WITH ANSM1-SMMP-1316, DATED 31 MARCH 1964.

LOAD AS SHOWN

ITEM	QUANTITY	WEIGHT (APPROX)
CONTROL SURFACE KIT-----	18-----	18,090 LBS
DUNNAGE-----		541 LBS
TOTAL WEIGHT-----		18,631 LBS



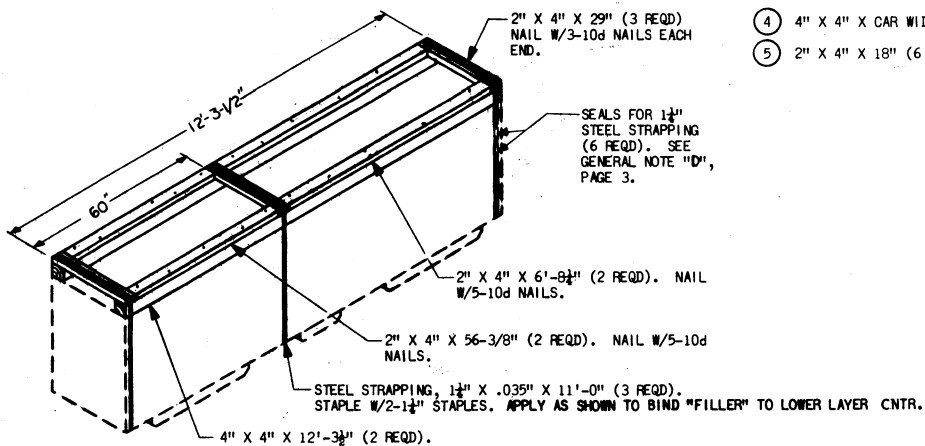
TYPICAL LCL

2 UNIT LOAD

NOTE "●":
TWO (2) BACK UP CLEATS SHOWN AS PC (3), ARE ADEQUATE FOR RETAINING A MAXIMUM LCL LOAD OF 7,700 POUNDS.

KEY NUMBERS

- ① 2" X 6" X CUT TO FIT BETWEEN CONTAINER SKIDS (DOUBLED) (2 REQD). NAIL FIRST PIECE TO CAR FLOOR W/6-16d NAILS. NAIL SECOND PIECE TO FIRST IN LIKE MANNER.
- ② 2" X 6" X CAR WIDTH (TRIPLED) (1 REQD). NAIL FIRST PIECE TO CAR FLOOR W/1-16d NAIL EVERY 8". NAIL EACH ADDITIONAL PIECE W/1-40d NAIL EACH 8".
- ③ 2" X 6" X 30" (TRIPLED) (2 REQD). NAIL FIRST PIECE TO CAR FLOOR W/6-16d NAILS. NAIL EACH ADDITIONAL PIECE W/6-40d NAILS. SEE NOTE "●".
- ④ 4" X 4" X CAR WIDTH (1 REQD). POSITION AS SHOWN.
- ⑤ 2" X 4" X 18" (6 REQD). NAIL TO CAR SIDE WALL W/5-12d NAILS.



FILLER

TO BE USED FOR OMISSION OF ONE OR TWO CONTAINERS. SEE NOTE, PAGE 2.