

# STORAGE IN APPROVED MAGAZINES OF GBU-53 SMALL DIAMETER BOMB II PACKED IN CNU-714 METAL CON- TAINERS

<u>ITEM</u>	<u>INDEX</u>	<u>PAGE(S)</u>
GENERAL NOTES AND MATERIAL SPECIFICATIONS	- - - - -	2
CONTAINER DETAILS	- - - - -	3
TYPICAL STORAGE IN ARCHED OR ROUNDED ROOF MAGAZINES	- - - - -	4-7
CORBETTA MAGAZINE	- - - - -	8, 9
100'-8" L X 50'-0" W RECTANGULAR MAGAZINE	- - - - -	10, 11
60'-0" L X 40'-0" W X 15'-0" H TYPE II BUNKER MAGAZINE	- - - - -	12-13
60'-0" L X 40'-0" W X 11'-0" H TYPE III BUNKER MAGAZINE	- - - - -	14-15
40'-0" L X 20'-0" W X 11'-0" H TYPE IV BUNKER MAGAZINE	- - - - -	16-17
TYPICAL MULTIPLE-LOT STORAGE PROCEDURES	- - - - -	18-23
SHIM LOCATION DETAIL	- - - - -	24

**DISTRIBUTION STATEMENT A:**

APPROVED FOR PUBLIC RELEASE  
DISTRIBUTION IS UNLIMITED.

## U.S. ARMY MATERIEL COMMAND DRAWING

APPROVED, COMBAT CAPABILITIES, DEVELOPMENT COMMAND ARMAMENTS CENTER		<b>CAUTION: VERIFY PRIOR TO USE AT <a href="https://www.dau.edu/cop/ammo/Pages/Default.aspx">https://www.dau.edu/cop/ammo/Pages/Default.aspx</a> THAT THIS IS THE MOST CURRENT VERSION OF THIS DOCUMENT. THIS IS PAGE 1 OF 24.</b>			
HANSEN.JOSEP H.W.1376495538  FCDD-ACE-LTP	Digitally signed by HANSEN.JOSEPH.W.13764955 38 Date: 2021.09.16 14:56:16 -05'00'	<b>DO NOT SCALE</b>		<b>AUGUST 2021</b>	
	DESIGN ENGINEER	BASIC	QUYEN TRAN		
		REV.			
APPROVED BY ORDER OF COMMANDING GENERAL, U.S. ARMY MATERIEL COMMAND	ENGINEERING DIVISON	FIEFFER.LAUR A.A.1230375727	Digitally signed by FIEFFER.LAURA.A.1230375727 Date: 2021.08.19 07:07:08 -05'00'		
BRAILSFORD.KEIT H.ANTHONY.10286 55661  U.S. ARMY DEFENSE AMMUNITION CENTER	TEST ENGINEER	FELICIANO.AD IN.1259200373	CLASS	DIVISION	DRAWING
	TEST REPORT	NA	19	48	8887
	EXPLOSIVE SAFETY DIRECTORATE	FAIRHURST.ROBER T.JOHN.1015766880			SP1-3-4-14- 22J57
		Digitally signed by FAIRHURST.ROBERT.JOHN.1015 766880 Date: 2021.08.31 09:59:28 -05'00'			

## GENERAL NOTES

- A. THIS DOCUMENT HAS BEEN PREPARED AND ISSUED IN ACCORDANCE WITH AR 740-1 AND AUGMENTS TM 743-200-1 (CHAPTER 5).
- B. THE STORAGE PROCEDURES DEPICTED WITHIN THIS DOCUMENT ARE APPLICABLE FOR STORAGE IN VARIOUS TYPES AND SIZES OF MAGAZINES. THE STORAGE PROCEDURES DEPICTED FOR THE SPECIFIC TYPES OF MAGAZINES MAY ALSO BE UTILIZED TO STORE GBU-53 SMALL DIAMETER BOMB II PACKED IN CNU-714 CONTAINERS IN OTHER TYPES OF APPROVED MAGAZINES. MINOR ADJUSTMENTS MAY BE MADE TO FACILITATE STORAGE IN OTHER TYPES OF MAGAZINES; HOWEVER, THE BASIC PRINCIPLES AS DEPICTED HEREIN WILL BE FOLLOWED.
- C. THE STORAGE PROCEDURES SPECIFIED IN THIS DRAWING ARE APPLICABLE TO LOADS OF GBU-53 SMALL DIAMETER BOMB II PACKED ONE PER CNU-714 CONTAINER. SUBSEQUENT REFERENCE TO CONTAINER HEREIN MEANS THE CONTAINER WITH AMMUNITION ITEMS. SEE PAGE 3 AND RAYTHEON DRAWING 2239994 FOR DETAILS OF THE CONTAINER.
- D. **CAUTION:** THE ALLOWABLE "EXPLOSIVE LIMIT" ESTABLISHED FOR A MAGAZINE IS NOT TO BE EXCEEDED. THIS LIMITATION MAY REQUIRE A QUANTITY REDUCTION FROM THE STORAGE AS SHOWN.
- E. STORED CONTAINERS MUST NOT CONTACT THE SIDES OF A MAGAZINE. THEREFORE, CONTAINERS MUST BE STORED A MINIMUM OF 6" FROM THE SIDEWALL OR CURVATURE OF THE MAGAZINE AS APPLICABLE. TO PROVIDE FOR THIS MANDATORY CLEARANCE REQUIREMENT, CONTAINERS MAY BE ELIMINATED FROM THE DEPICTED STORAGE PATTERN AS NECESSARY.
- F. AISLE DIMENSION SHOWN FOR STORAGE PROCEDURES IN MAGAZINES MAY BE ADJUSTED TO SUIT LOCAL CONDITIONS, VARIATIONS IN CONTAINER DIMENSIONS, AND/OR AVAILABLE MATERIAL HANDLING EQUIPMENT (MHE). HOWEVER, A 24" MINIMUM INSPECTION AISLE MUST BE MAINTAINED AT THE END OF THE CONTAINERS WHERE HUMIDITY INDICATORS ARE LOCATED.
- G. THE MAXIMUM FLOOR LOAD FOR A MAGAZINE AS PRESCRIBED WILL NOT BE EXCEEDED.
- H. IF AVAILABLE MHE PERMITS, ADDITIONAL CONTAINERS MAY BE STORED WITHIN THE MHE AREA AND/OR OTHER AVAILABLE AREA OF THE MAGAZINE.
- J. THE HEIGHT OF THE PACKAGE GUARD ON SOME FORKLIFT TRUCKS MAY NOT PERMIT PLACEMENT OF SOME TOP LAYER CONTAINERS IN THE STACKS SHOWN IN THE STORAGE VIEWS HEREIN, UNLESS TWO UPPER CONTAINERS ARE HANDLED AS ONE LIFT OR THE PACKAGE GUARD IS REMOVED (TINE CARRIAGE WILL IN MOST INSTANCES PROVIDE ADEQUATE PACKAGE GUARD PROTECTION). ONLY A FORKLIFT TRUCK OF ADEQUATE CAPACITY WILL BE USED WHEN LIFTING TWO CONTAINERS AS ONE LIFT.
- K. WHEN LOCAL STORAGE CONDITIONS ARE SUCH THAT AN AMMUNITION STORAGE MAGAZINE NET EXPLOSIVE WEIGHT LIMIT WILL BE REACHED BEFORE ALL AVAILABLE STORAGE SPACE WILL BE UTILIZED, A COMBINATION OF THE VARIOUS STORAGE PATTERNS DELINEATED HEREIN MAY BE USED IN LIEU OF BLOCK STORAGE PATTERNS TO FACILITATE INVENTORY, INSPECTION, THE USE OF MATERIAL HANDLING EQUIPMENT, SURVEILLANCE, ETC., OF THE AMMUNITION TO BE STORED WITHIN THE MAGAZINE.

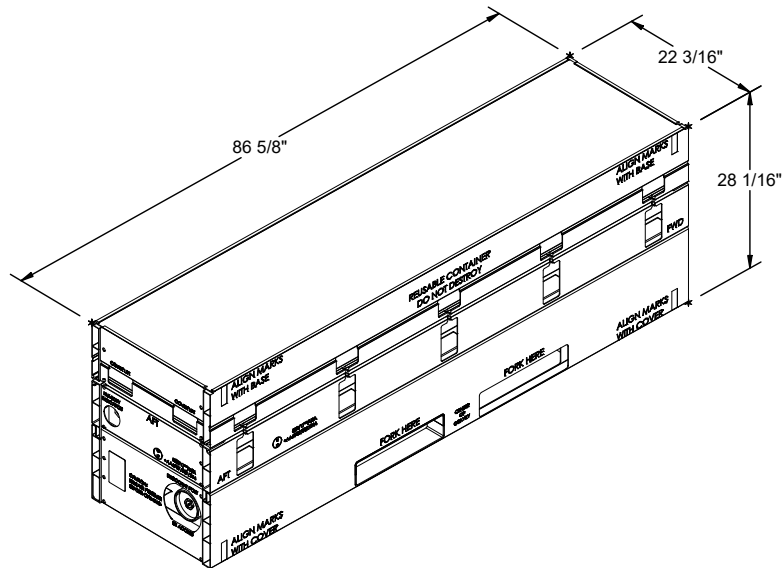
(CONTINUED AT RIGHT)

## (GENERAL NOTES CONTINUED)

- L. STORAGE OF MULTIPLE LOTS IN A MAGAZINE WILL REQUIRE CAREFUL PRE-PLANNING SO AS TO INSURE MHE ACCESSIBILITY TO ANY LOT IN ACCORDANCE WITH REQUIREMENTS SET FORTH IN THE APPLICABLE "SPECIAL NOTES" SECTIONS OF THE MULTIPLE LOT STORAGE PROCEDURES SHOWN ON PAGES 18 THRU 23.
- M. ALTHOUGH SPECIFIC PROCEDURES ARE INCLUDED IN THIS DRAWING FOR STORING MULTIPLE LOTS WITHIN ONE STRUCTURE, THE BASIC STORAGE PATTERNS AS SHOWN ON PAGES 4 THRU 17 CAN ALSO BE ADAPTED FOR STORAGE OF MORE THAN ONE LOT. MULTIPLE LOTS OF CONTAINERS MAY BE STORED WITH ONE OR MORE ROWS USED FOR EACH LOT WHEN STORED IN ACCORDANCE WITH THE BASIC STORAGE PATTERN FOR ARCHED OR ROUNDED ROOF MAGAZINES (A ROW RUNS FROM THE REAR OF THE MAGAZINE TO THE FRONT). A SPACE OF APPROXIMATELY 1" WILL HAVE TO BE LEFT BETWEEN ADJACENT ROWS CONTAINING DIFFERENT LOTS. MULTIPLE LOTS OF CONTAINERS MAY BE STORED WITH ONE OR MORE STACKS USED FOR EACH LOT WHEN STORED IN ACCORDANCE WITH THE BASIC STORAGE PATTERN FOR CORBETTA OR RECTANGULAR MAGAZINES. AN MHE AISLE MUST BE PROVIDED FROM THE DOOR TO THE REAR WALL OF THE MAGAZINE FOR MHE ACCESS TO ALL LOTS. ALL THE ADDITIONAL CRITERIA PERTAINING TO MULTIPLE LOT STORAGE WILL APPLY AS SPECIFIED ON PAGES 18 THRU 23.
- N. CONTAINERS PRESENTLY STORED IN ACCORDANCE WITH A PRIOR APPROVED DRAWING NEED NOT BE RE-STORED SOLELY TO CONFORM TO THE PROCEDURES SPECIFIED IN THIS DOCUMENT.
- O. OTHER COMPATIBLE ITEMS MAY BE STORED IN A MAGAZINE, WHICH IS PARTIALLY FILLED WITH THE DESIGNATED ITEM.
- P. IN IGLOO, ARCH TYPE AND STRADLEY MAGAZINES WHICH HAVE SLOPING FLOORS, THE DEPICTED STORAGE PATTERNS, IN SOME CASES, INCLUDE CONTAINER STACKS WHICH STRADDLE THE RIDGE OF THE FLOOR AT THE CENTER OF THE MAGAZINE. FLOOR DUNNAGE IN THE FORM OF SHIMS WILL BE USED AS REQUIRED TO ACHIEVE SOUND AND ACCEPTABLE STABLE STACKS. SEE THE DETAIL ON PAGE 24.
- Q. PORTIONS OF THE MAGAZINES, SUCH AS SIDEWALLS, END WALLS, AND ROOFS HAVE NOT BEEN SHOWN IN THE STORAGE VIEWS FOR CLARITY PURPOSES.
- R. DUNNAGE LUMBER SPECIFIED THROUGHOUT THIS PROCEDURAL DRAWING IS OF NOMINAL SIZE. FOR EXAMPLE, 1" X 4" MATERIAL IS ACTUALLY 3/4" THICK BY 3-1/2" WIDE AND 2" X 6" MATERIAL IS ACTUALLY 1-1/2" THICK BY 5-1/2" WIDE.
- S. CONVERSION TO METRIC EQUIVALENTS: DIMENSIONS WITHIN THIS DOCUMENT ARE EXPRESSED IN INCHES, AND WEIGHTS ARE EXPRESSED IN POUNDS. WHEN NECESSARY, THE METRIC EQUIVALENT MAY BE COMPUTED ON THE BASIS OF ONE INCH EQUALS 25.4MM, AND ONE POUND EQUALS 0.454 KG.

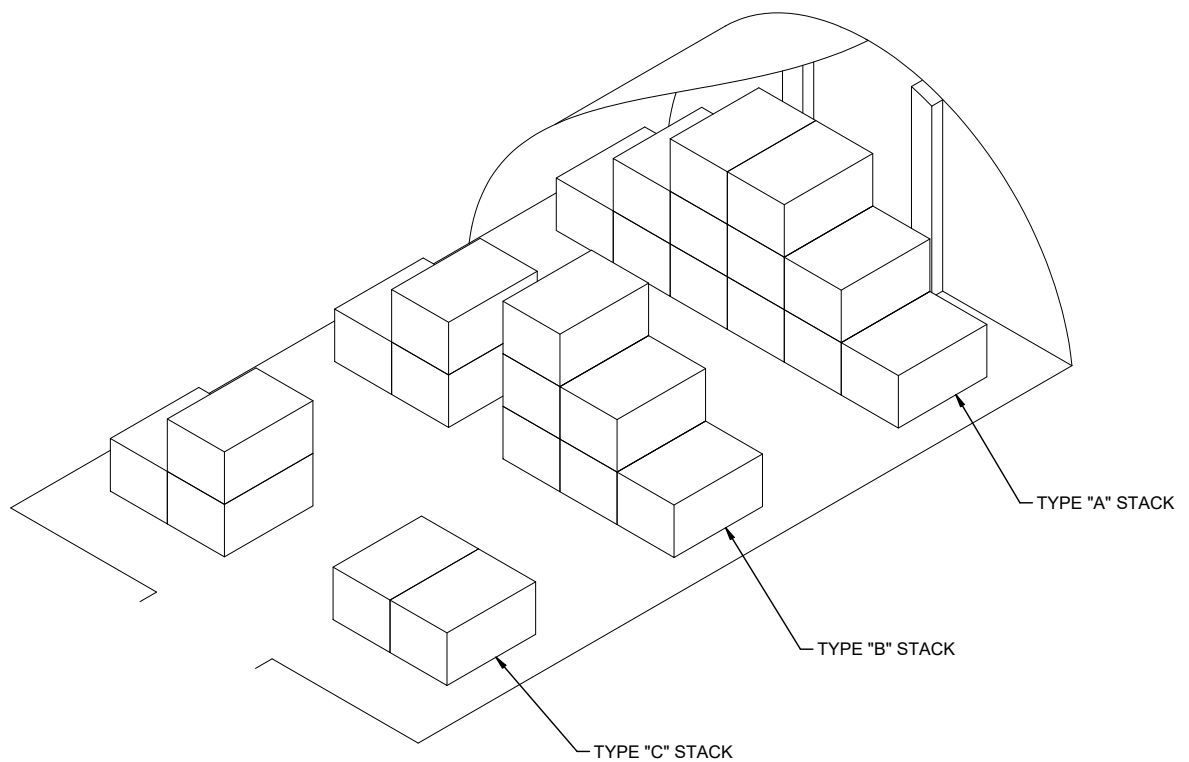
## MATERIAL SPECIFICATIONS

LUMBER - - - - - : SEE TM 743-200-1 (DUNNAGE LUMBER) AND VOLUNTARY PRODUCT STANDARD PS 20.



**CNU-714 CONTAINER**

GROSS WEIGHT - - - - - 520 LBS (APPROX)  
 CUBE - - - - - 31.2 CU FT (APPROX)

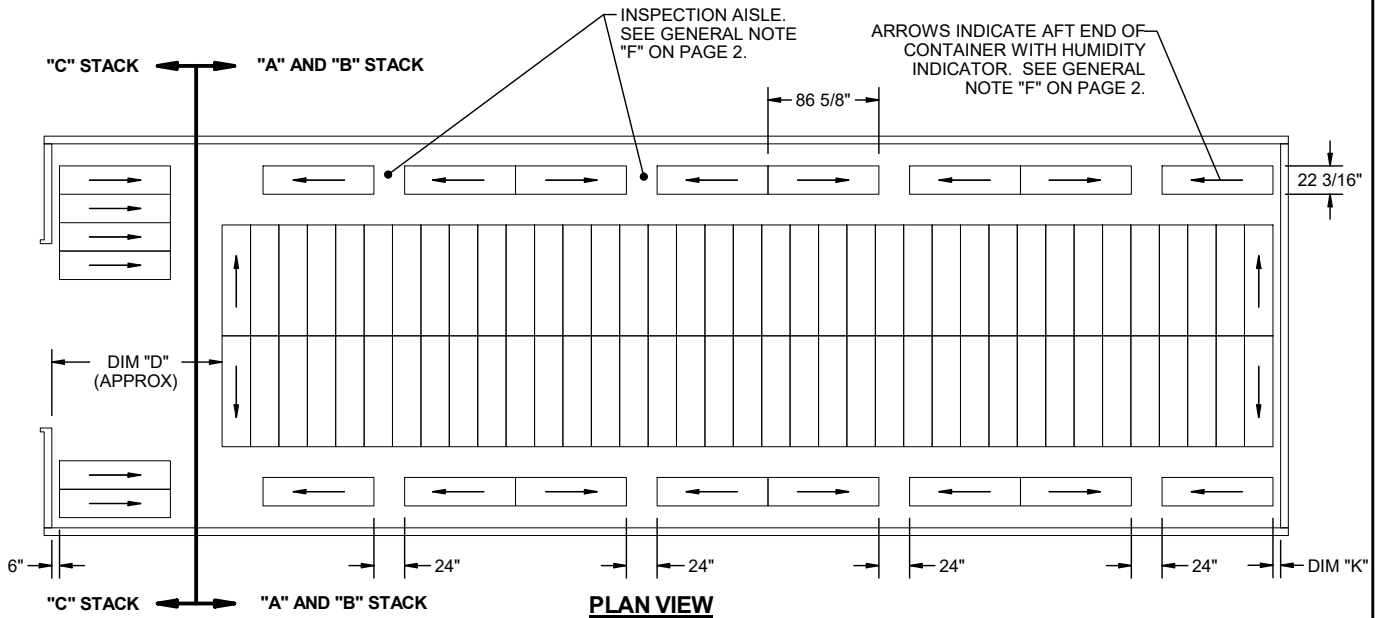


**STACK IDENTIFICATION**

A TYPE "A" STACK IS IDENTIFIED AS A GROUP OF ITEMS /UNITS WHICH EXTENDS FULL WIDTH AND HEIGHT OF THE MAGAZINE, AND IS ONE ITEM/UNIT LONG IN THE LENGTH OF THE MAGAZINE.

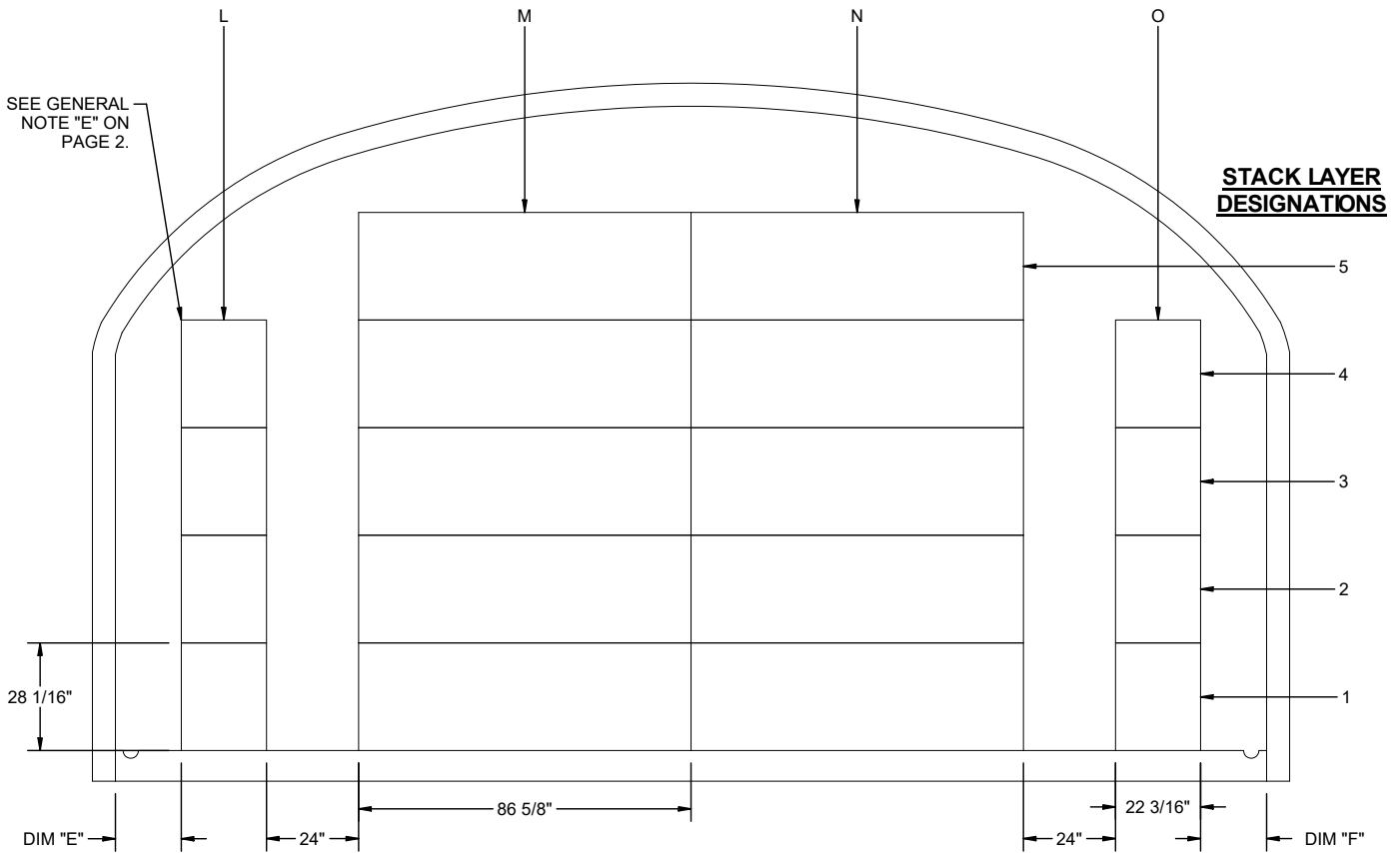
A TYPE "B" STACK IS IDENTIFIED AS A GROUP OF ITEMS/UNITS WHICH EXTEND FULL WIDTH AND HEIGHT OF THE MAGAZINE, AND IS ONE UNIT/ITEM LONG, BUT HAS AN AISLE AT OR NEAR THE CENTER OF THE WIDTH OF THE STACK.

A TYPE "C" STACK IS IDENTIFIED AS A GROUP OF ITEMS/UNITS WHICH IS ONE UNIT/ITEM LONG AND CONSISTS OF PARTIAL STACKS ON EACH SIDE OF THE MAGAZINE, USUALLY ONE ITEM/UNIT HIGH ON ONE SIDE OF THE MAGAZINE.



**NOTE:** FOR IDENTIFICATION OF LETTERED DIMENSIONS REFER TO CHART 1 ON PAGE 6.

**STACK COLUMN DESIGNATIONS**

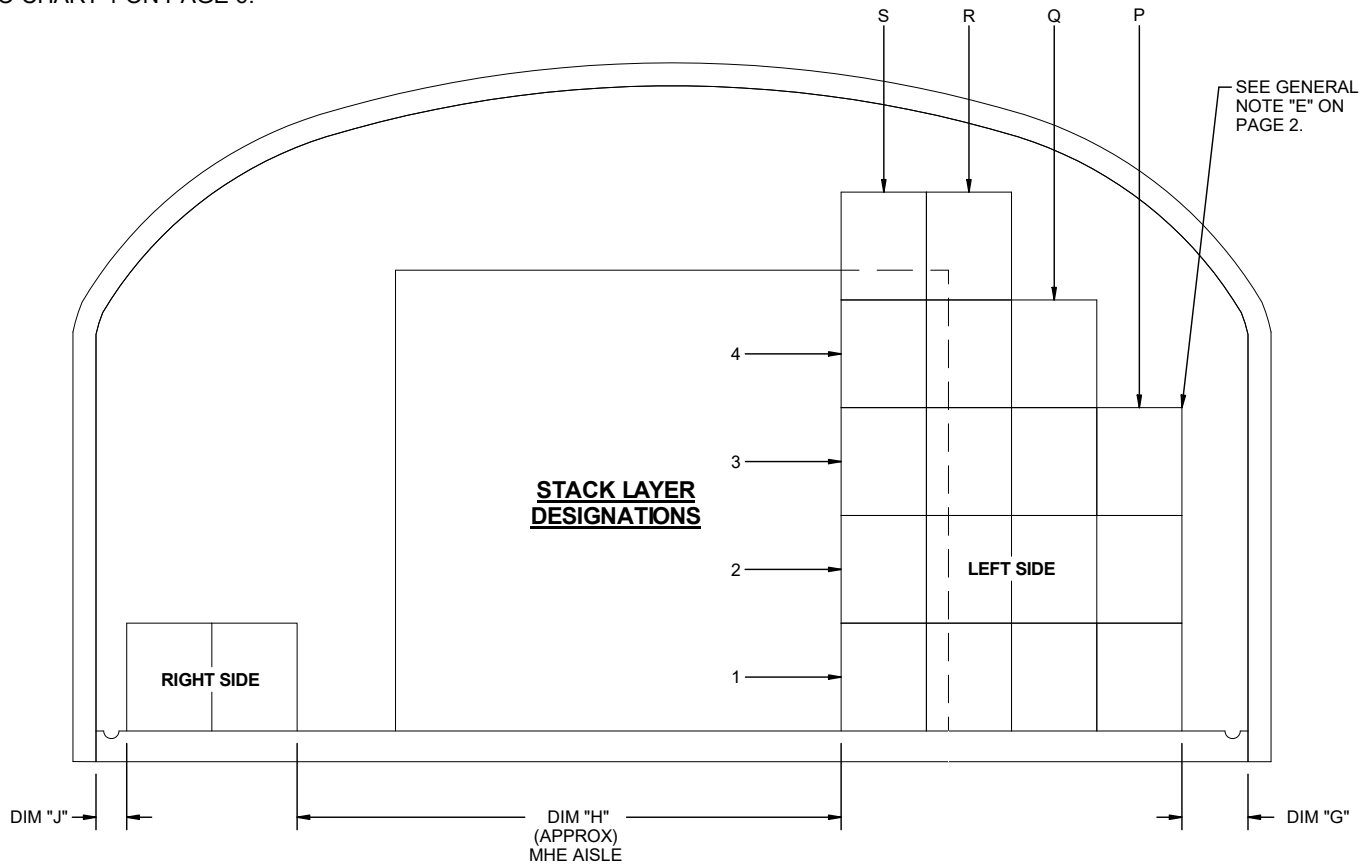


**"B" STACK**

(SEE "STACK IDENTIFICATION" ON PAGE 3 AND "CHART 2 - STACK CONFIGURATION" ON PAGE 7.)

**NOTE:** FOR IDENTIFICATION OF LETTERED DIMENSIONS REFER TO CHART 1 ON PAGE 6.

**STACK COLUMN DESIGNATIONS**



**STACK LAYER DESIGNATIONS**

**"C" STACK**

TYPICAL "C" STACK FOR STRADLEY MAGAZINE.  
(SEE "STACK IDENTIFICATION" ON PAGE 3 AND "CHART 2 - STACK CONFIGURATION" ON PAGE 7)

**SPECIAL NOTES:**

1. THE FOLLOWING NOTES, CHART 1 ON PAGE 6 AND CHART 2 ON PAGE 7 ARE PRESENTED AS GUIDANCE IN THE SELECTION OF A STORAGE PATTERN, AND IN DETERMINING THE QUANTITY OF CONTAINERS WHICH CAN BE STORED IN THE STORAGE MAGAZINES LISTED IN THE CHARTS MENTIONED ABOVE.
2. CHART 1 ON PAGE 6 DESCRIBES THE STORAGE MAGAZINE GENERAL DIMENSIONS AND THE DIMENSIONS OF THE CONTAINER SPACING WITHIN THE STORAGE MAGAZINES.
3. DIMENSIONS "A", "B" AND "C" HAVE BEEN OMITTED TO AVOID CONFUSION WITH STACKS "A", "B" AND "C".
4. CHART 2 ON PAGE 7 DETAILS THE QUANTITY OF CONTAINERS IN EACH TYPE OF MAGAZINE AND THE LAYOUT OF THE STACKS FOR EACH TYPE OF MAGAZINE. THE CHART SHOWS THE NUMBER OF CONTAINERS IN EACH STACK LAYER AND THE LOCATION OF THE CONTAINER ON EACH LAYER.

(CONTINUED AT RIGHT)

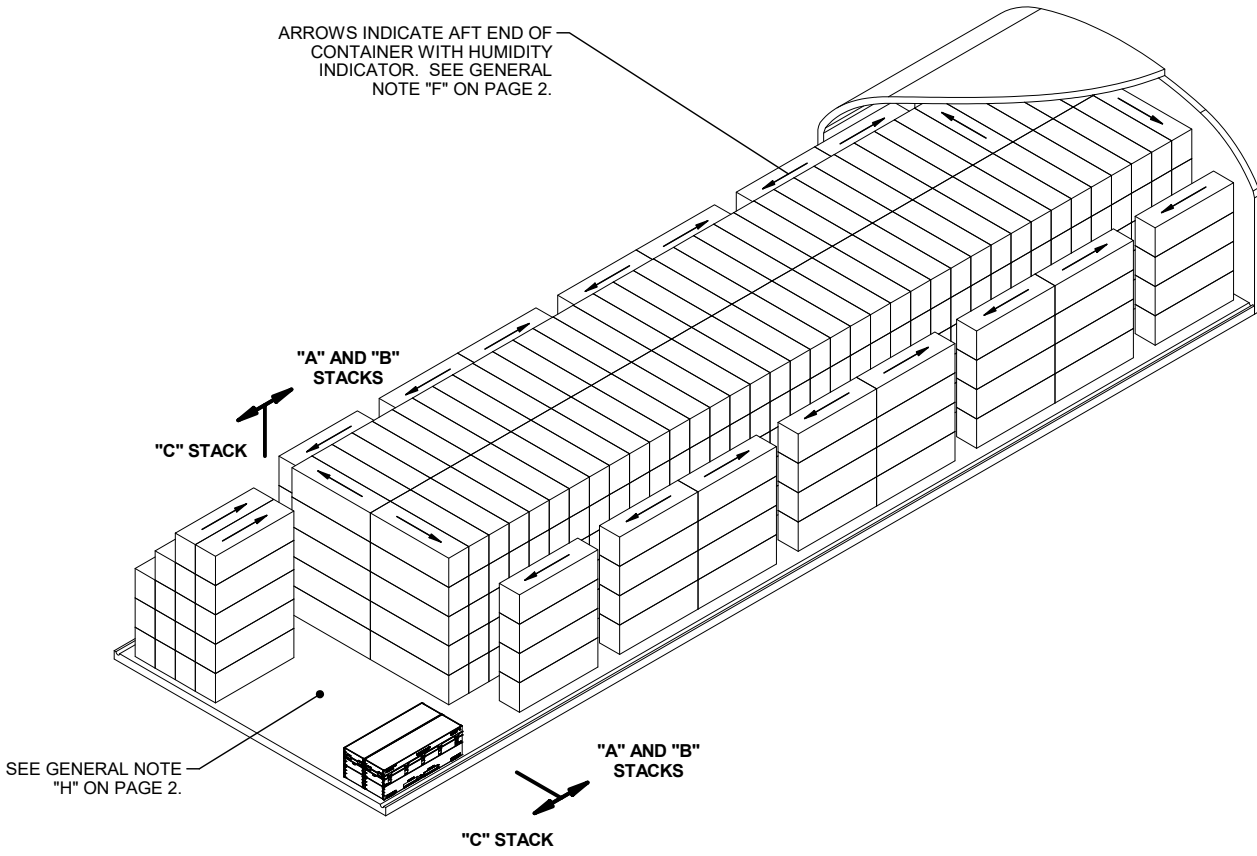
**EXAMPLE:**

CHART 2 - "C" STACK CONFIGURATION - LEFT SIDE  
MAGAZINE: STRADLEY

- LAYER NUMBER 1: 4 (P-S)
- LAYER NUMBER 2: 4 (P-S)
- LAYER NUMBER 3: 4 (P-S)
- LAYER NUMBER 4: 3 (Q-S)
- LAYER NUMBER 5: 2 (R-S)

**EXPLANATION:**

- LAYER 1 (BOTTOM LAYER) HAS FOUR CONTAINERS FROM THE "P" COLUMN (NEAREST THE LEFT SIDE OF THE MAGAZINE) TO THE "S" COLUMN.
- LAYER 2 (ON TOP OF LAYER 1) HAS FOUR CONTAINERS FROM THE "P" COLUMN TO THE "S" COLUMN.
- LAYER 3 (ON TOP OF LAYER 2) HAS FOUR CONTAINERS FROM THE "P" COLUMN TO THE "S" COLUMN.
- LAYER 4 (ON TOP OF LAYER 3) HAS THREE CONTAINERS FROM THE "Q" COLUMN TO THE "S" COLUMN.
- LAYER 5 (ON TOP OF LAYER 4) HAS TWO CONTAINERS FROM THE "R" COLUMN TO THE "S" COLUMN.



**ISOMETRIC VIEW**

STRADLEY MAGAZINE SHOWN AS TYPICAL.

**CHART 1 - DIMENSIONS**

MAGAZINE DIMENSIONS	MAGAZINE TYPE													
	IGLOO			ARCH 12'		ARCH 11'		ARCH 10'		OVAL ARCH	STRADLEY	STEEL ARCH		
LENGTH	40'-4"	60'-8"	81'-0"	81'-2"	40'-0"	80'-0"	40'-0"	80'-0"	40'-0"	80'-0"	89'-0"	80'-0"	59'-0"	89'-0"
WIDTH	26'-6"			26'-6"	25'-0"	25'-0"	25'-0"	25'-0"	25'-0"	24'-10"	25'-0"	25'-0"	25'-0"	24'-11"
HEIGHT	12'-9"			12'-1-3/4"		11'-0"		10'-0"		14'-5"	14'-0"	14'-0"	14'-0"	13'-6"
DIMENSIONS	CONTAINER SPACING DIMENSIONS													
DIM "D" (MHE AREA APPROX)	10'-3"	10'-3"	10'-3"	11'-7"	9'-11"	10'-5"	11'-1"	10'-5"	9'-11"	11'-1"	10'-10"	11'-1"	10'-5"	10'-10"
DIM "E" ("B" STACK LEFT)	26"	26"	26"	26"	17"	17"	17"	17"	17"	17"	16"	17"	17"	16"
DIM "F" ("B" STACK RIGHT)	26"	26"	26"	26"	17"	17"	17"	17"	17"	17"	16"	17"	17"	17"
DIM "G" ("C" STACK LEFT)	20"	20"	20"	27"	20"	20"	16"	16"	18"	18"	22"	17"	19"	22"
DIM "H" (MHE AISLE APPROX)	12'-11"	12'-11"	12'-11"	12'-11"	11'-8"	11'-8"	11'-6"	11'-6"	11'-11"	11'-11"	11'-11"	11'-9"	11'-10"	11'-5"
DIM "J" ("C" STACK RIGHT)	10"	10"	10"	12"	7"	7"	13"	13"	16"	16"	10"	8"	6"	6"
DIM "K" ("A" & "B" STACK BACK)	6"	6"	6"	14"	6"	14"	14"	14"	6"	6"	6"	6"	6"	6"

**CHART 2 - STACK CONFIGURATION**

**MAGAZINE TYPE**

QUANTITY PER MAGAZINE	IGLOO			ARCH 12'	ARCH 12' X 25' W		ARCH 11'		ARCH 10'		OVAL ARCH	STRADLEY	STEEL ARCH	
	40'-4" L	60'-8" L	81'-0" L	26'-6" W	40'-0" L	80'-0" L	40'-0" L	80'-0" L	40'-0" L	80'-0" L			59'-0" L	89'-0" L
	155	255	351	343	155	343	107	249	113	249	513	453	244	388

**"A" STACK CONFIGURATION**

LAYER	CONTAINERS PER LAYER													
1	2 (M-N)			2 (M-N)			2 (M-N)		2 (M-N)		2 (M-N)	2 (M-N)	2 (M-N)	
2	2 (M-N)			2 (M-N)			2 (M-N)		2 (M-N)		2 (M-N)	2 (M-N)	2 (M-N)	
3	2 (M-N)			2 (M-N)			2 (M-N)		2 (M-N)		2 (M-N)	2 (M-N)	2 (M-N)	
4	2 (M-N)			2 (M-N)			0		0		2 (M-N)	2 (M-N)	2 (M-N)	
5	0			0			0		0		2 (M-N)	2 (M-N)	0	
SINGLE STACK TOTAL	8			8			6		6		10	10	8	
NUMBER OF STACKS	16	27	38	37	16	37	15	37	16	37	42	37	26	42
"A" STACK TOTAL	128	216	304	296	128	296	90	222	96	222	420	370	208	336

**"B" STACK CONFIGURATION - TO THE LEFT OF "A" STACK**

LAYER	CONTAINERS PER LAYER													
1	1(L)			1(L)			1(L)		1(L)		1(L)	1(L)	1(L)	
2	1(L)			1(L)			0		0		1(L)	1(L)	1(L)	
3	0			0			0		0		1(L)	1(L)	0	
4	0			0			0		0		1(L)	1(L)	0	
SINGLE STACK TOTAL	2			2			1		1		4	4	2	
NUMBER OF STACKS	3	6	8	8	3	8	3	8	3	8	9	8	5	9
"B" STACK LF TOTAL	6	12	16	16	6	16	3	8	3	8	36	32	10	18

**"B" STACK CONFIGURATION - TO THE RIGHT OF "A" STACK**

LAYER	CONTAINERS PER LAYER													
1	1(O)			1(O)			1(O)		1(O)		1(O)	1(O)	1(O)	
2	1(O)			1(O)			0		0		1(O)	1(O)	1(O)	
3	0			0			0		0		1(O)	1(O)	0	
4	0			0			0		0		1(O)	1(O)	0	
SINGLE STACK TOTAL	2			2			1		1		4	4	2	
NUMBER OF STACKS	3	6	8	8	3	8	3	8	3	8	9	8	5	9
"B" STACK RT TOTAL	6	12	16	16	6	16	3	8	3	8	36	32	10	18

**"C" STACK CONFIGURATION - LEFT SIDE**

LAYER	CONTAINERS PER LAYER													
1	4 (P-S)			4 (P-S)			4 (P-S)		4 (P-S)		4 (P-S)	4 (P-S)	4 (P-S)	
2	4 (P-S)			4 (P-S)			3 (Q-S)		3 (Q-S)		4 (P-S)	4 (P-S)	4 (P-S)	
3	3 (Q-S)			3 (Q-S)			2 (R-S)		2 (R-S)		4 (P-S)	4 (P-S)	3 (Q-S)	
4	2 (R-S)			2 (R-S)			0		0		4 (P-S)	3 (Q-S)	3 (Q-S)	
5	0			0			0		0		3 (Q-S)	2 (R-S)	0	
SINGLE STACK TOTAL	13			13			9		9		19	17	14	
NUMBER OF STACKS	1			1			1		1		1	1	1	
"C" STACK LF TOTAL	13			13			9		9		19	17	14	

**"C" STACK CONFIGURATION - RIGHT SIDE**

"C" STACK RT TOTAL	2			2			2		2		2	2	2	
--------------------	---	--	--	---	--	--	---	--	---	--	---	---	---	--

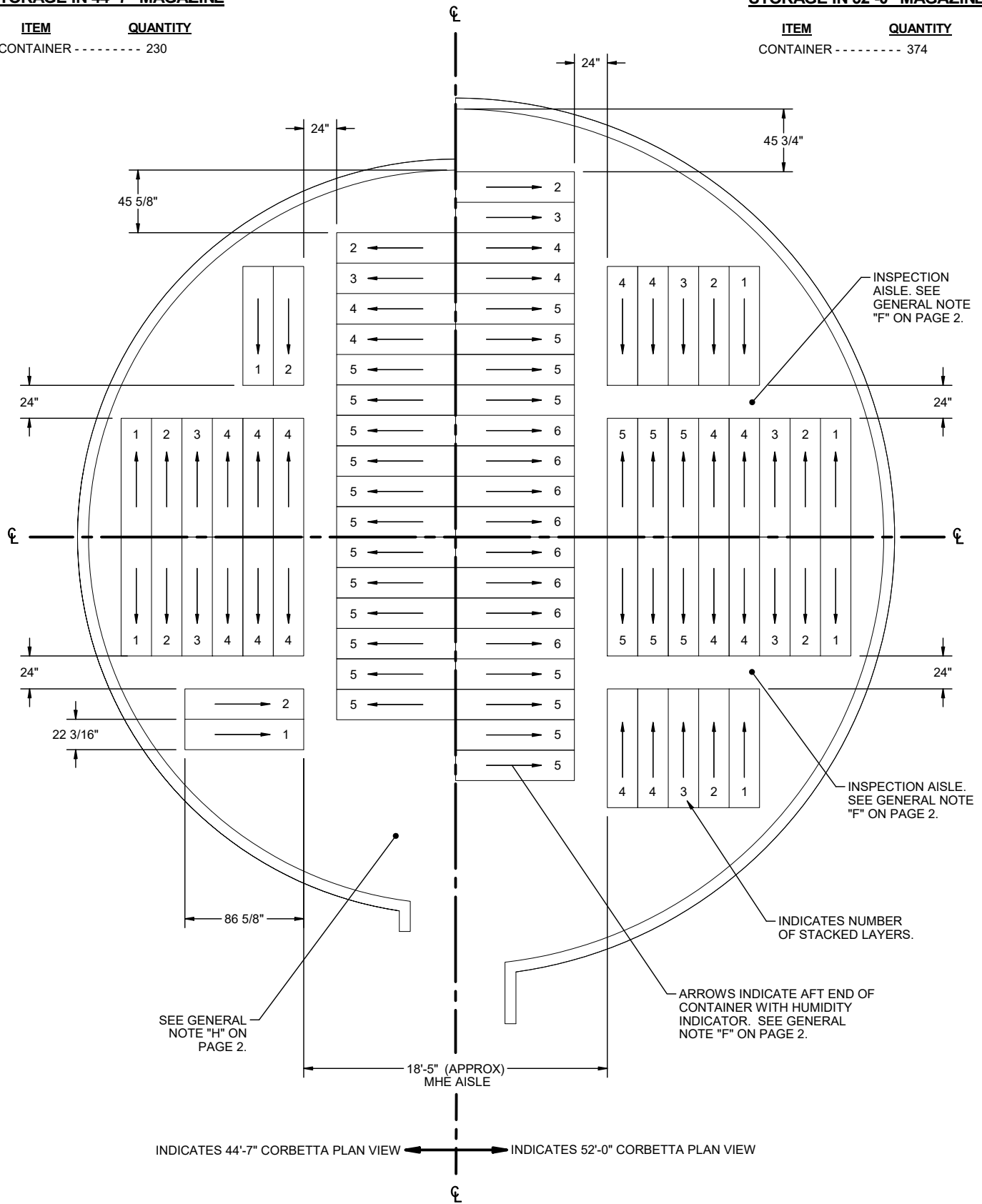
**NOTE:** REFER TO THE SPECIAL NOTES ON THE BOTTOM OF PAGE 5.

**STORAGE IN 44'-7" MAGAZINE**

**STORAGE IN 52'-0" MAGAZINE**

**ITEM**                      **QUANTITY**  
CONTAINER ----- 230

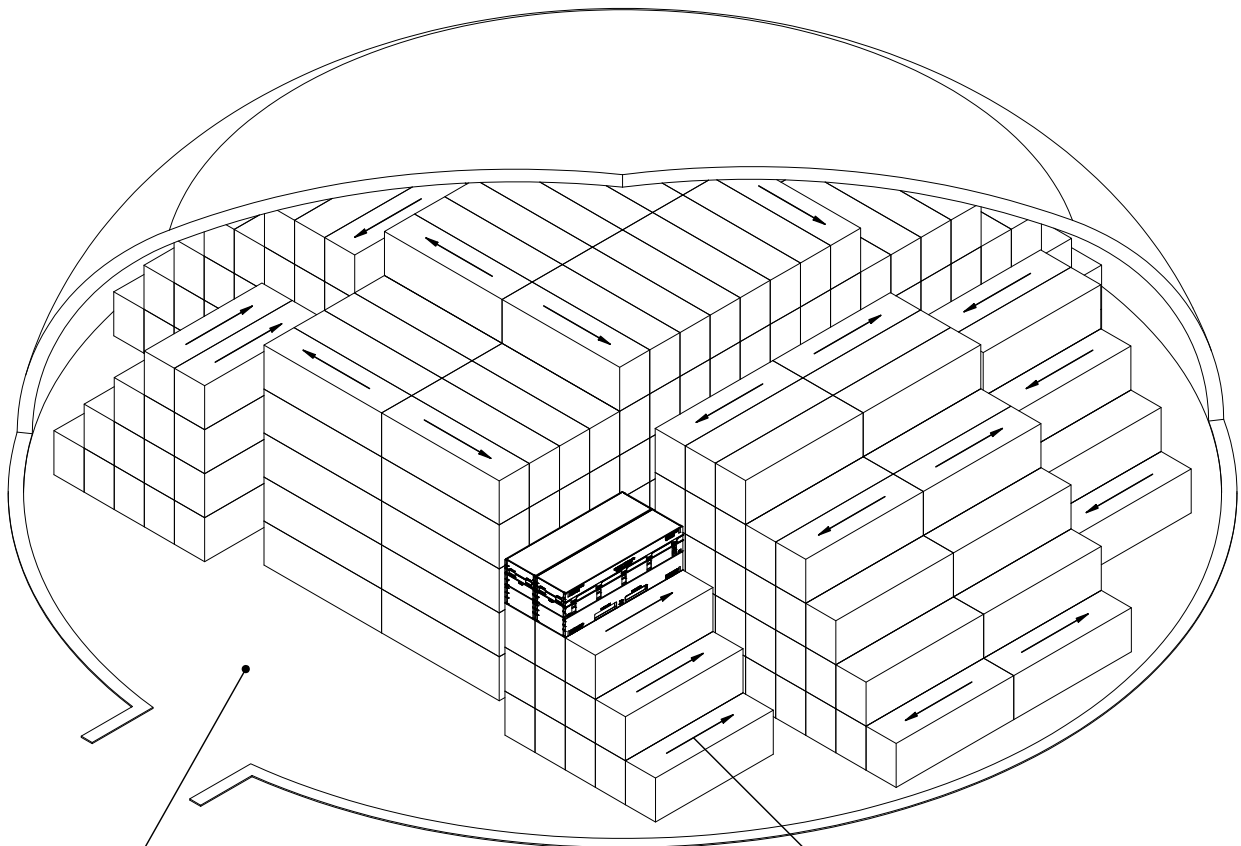
**ITEM**                      **QUANTITY**  
CONTAINER ----- 374



**PLAN VIEW**

THE RIGHT HAND PLAN VIEW INDICATES A 52'-0" CORBETTA MAGAZINE, AND THE LEFT HAND PLAN VIEW INDICATES A 44'-7" CORBETTA MAGAZINE. BOTH SIZE MAGAZINE LAYOUTS ARE SYMMETRICAL AROUND THE VERTICAL CENTER LINE.





SEE GENERAL  
NOTE "H" ON  
PAGE 2.

ARROWS INDICATE AFT END OF  
CONTAINER WITH HUMIDITY  
INDICATOR. SEE GENERAL  
NOTE "F" ON PAGE 2.

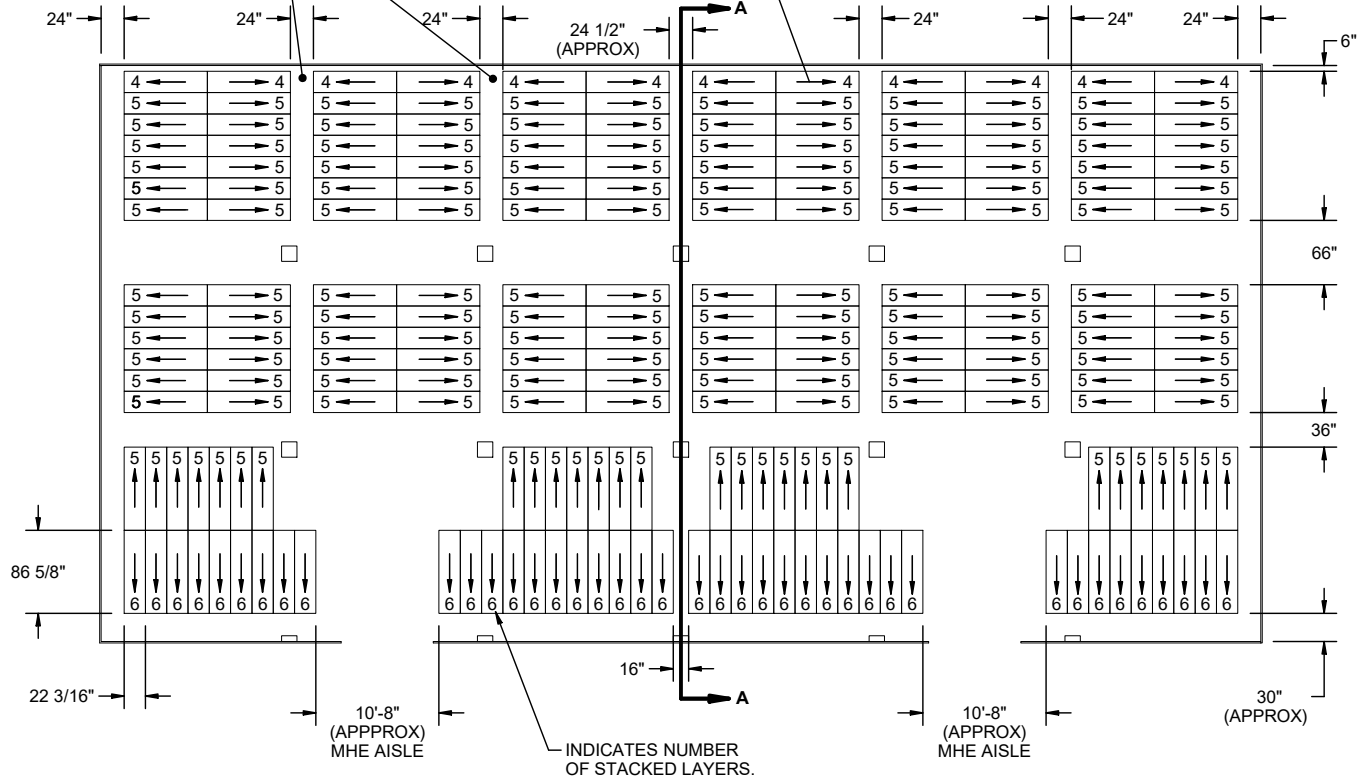
**ISOMETRIC VIEW**  
(52' - 0" DIA MAGAZINE)

**STORAGE IN RECTANGULAR  
MAGAZINE**

ITEM	QUANTITY
CONTAINER	----- 1,148

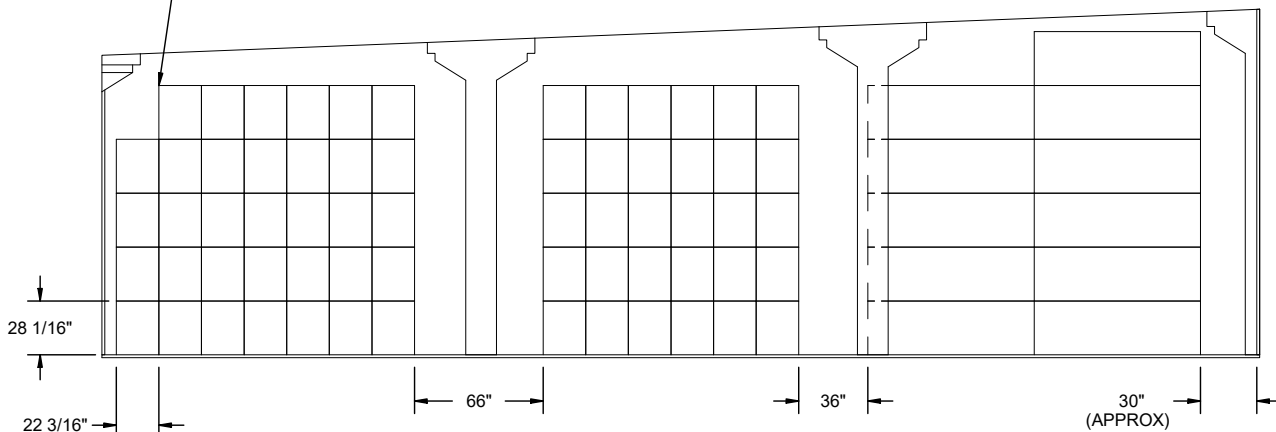
INSPECTION AISLE.  
SEE GENERAL NOTE  
"F" ON PAGE 2.

ARROWS INDICATE AFT END OF  
CONTAINER WITH HUMIDITY  
INDICATOR. SEE GENERAL  
NOTE "F" ON PAGE 2.



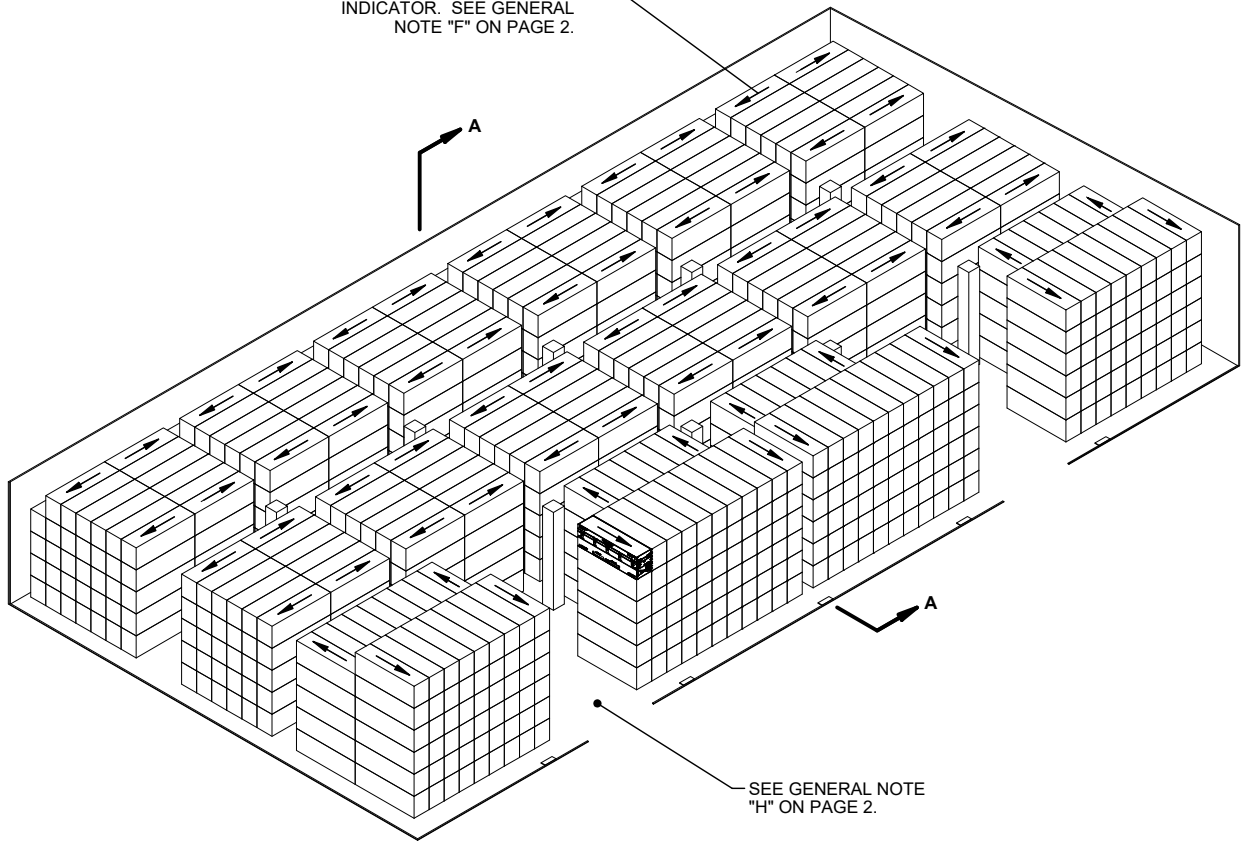
**PLAN VIEW**

SEE GENERAL NOTE  
"E" ON PAGE 2.



**SECTION A-A**

ARROWS INDICATE AFT END OF  
CONTAINER WITH HUMIDITY  
INDICATOR. SEE GENERAL  
NOTE "F" ON PAGE 2.



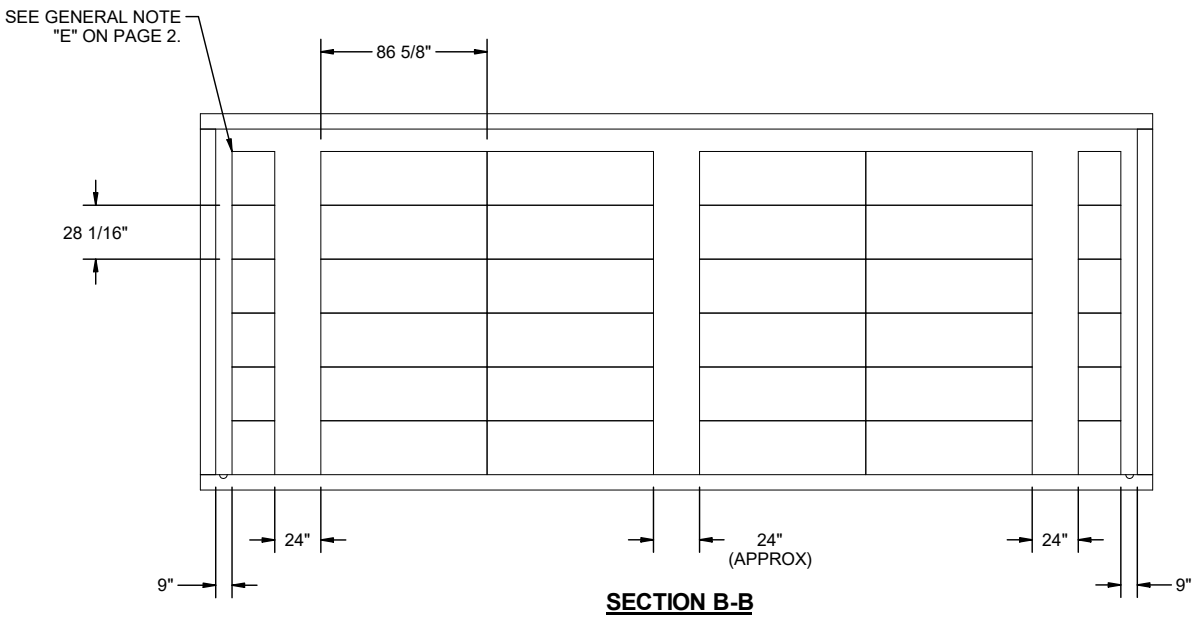
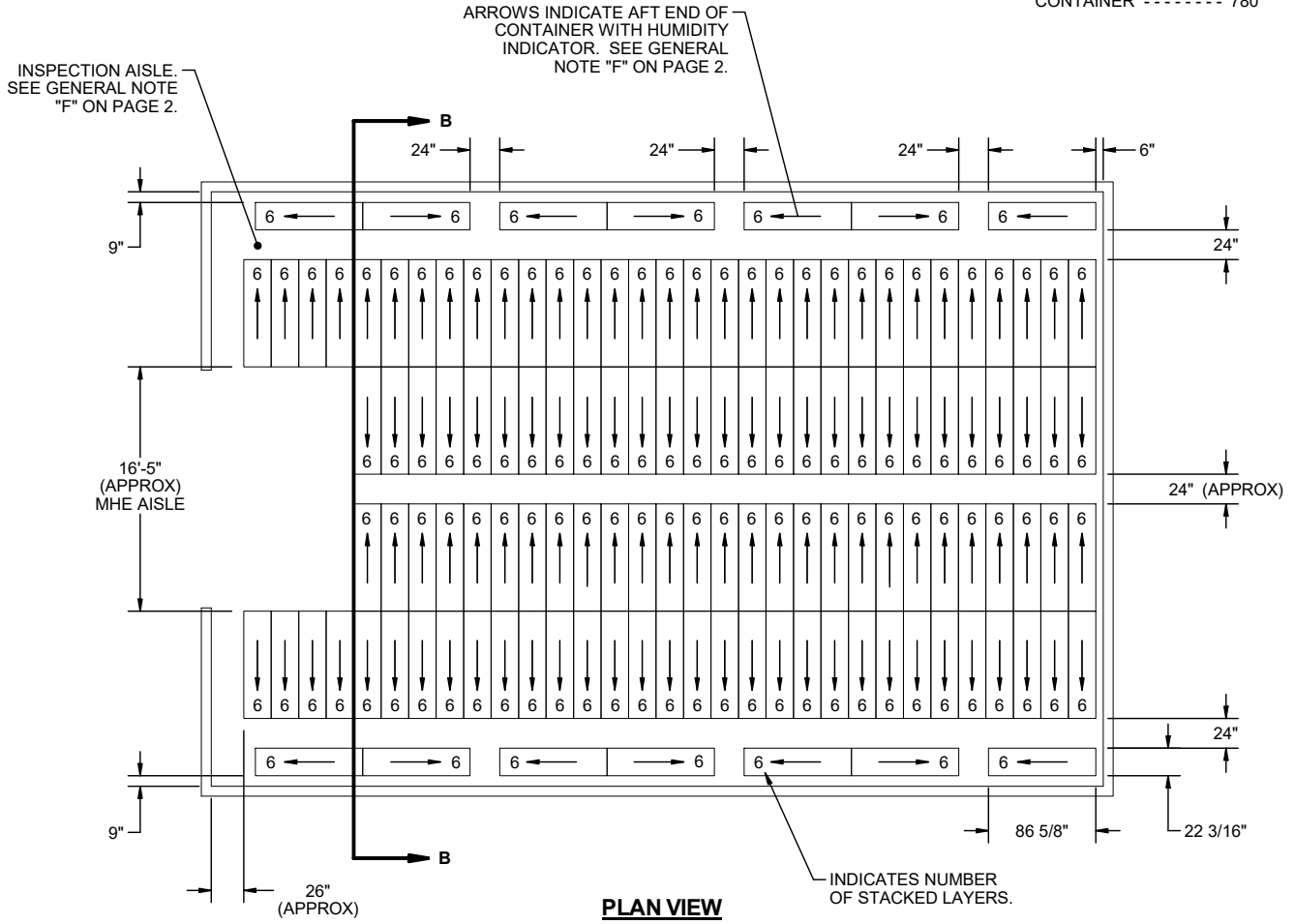
SEE GENERAL NOTE  
"H" ON PAGE 2.

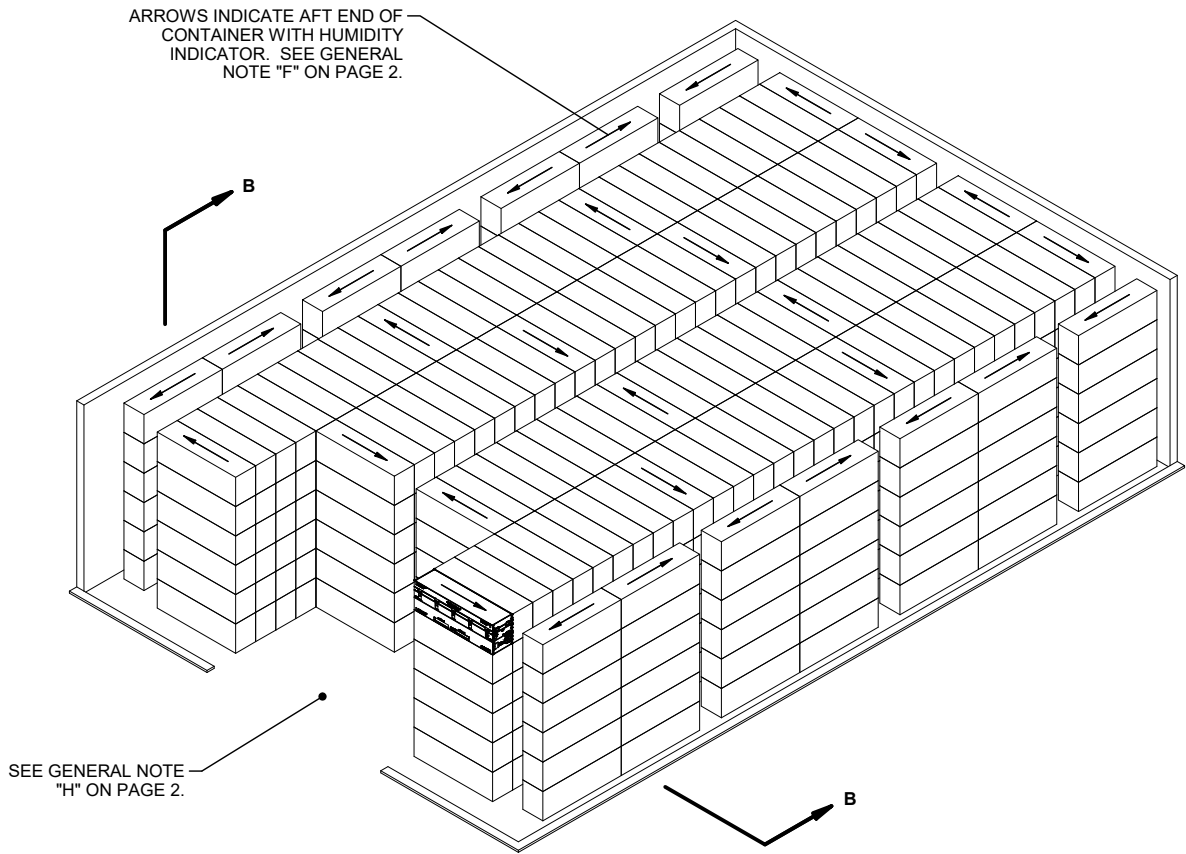
**ISOMETRIC VIEW**

(50'-0" MAGAZINE)

**STORAGE IN TYPE II BUNKER  
MAGAZINE**

**ITEM**                      **QUANTITY**  
CONTAINER ----- 780





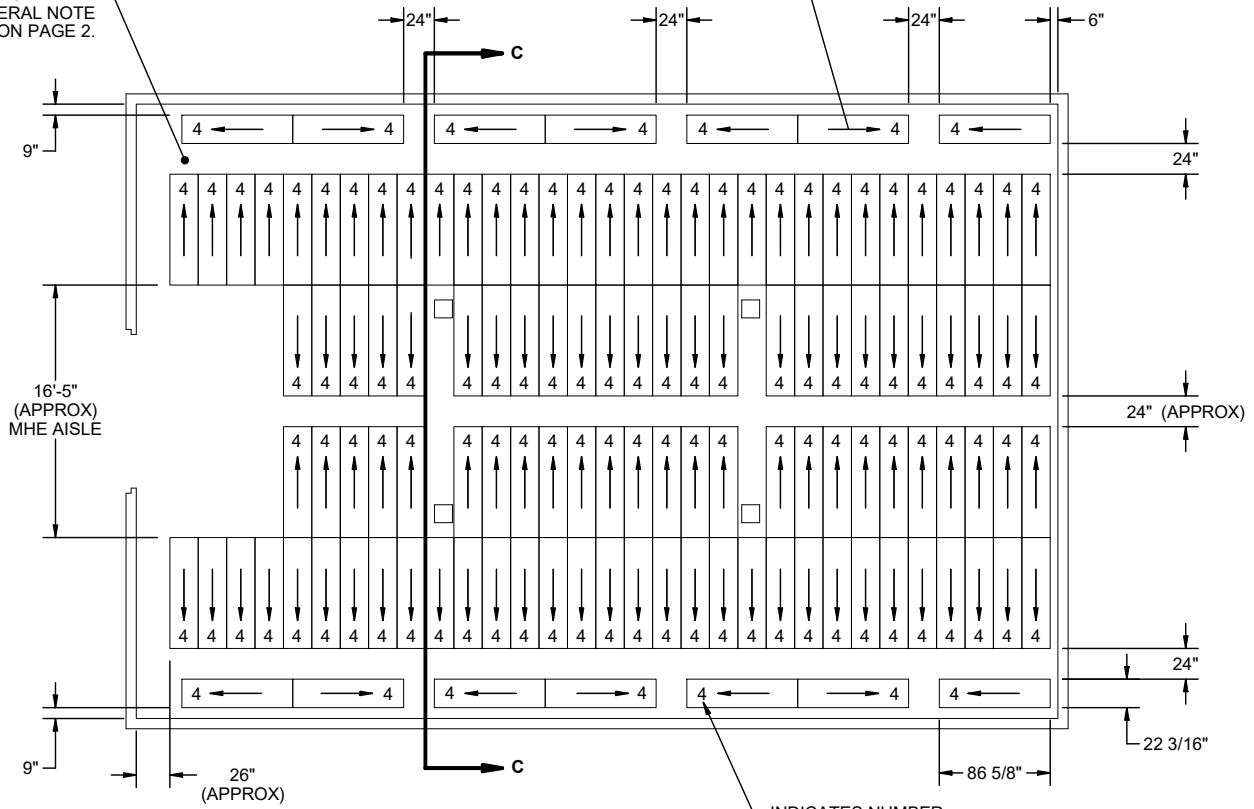
**ISOMETRIC VIEW**  
 (TYPE II BUNKER MAGAZINE)

**STORAGE IN TYPE III BUNKER  
MAGAZINE**

ITEM	QUANTITY
CONTAINER	504

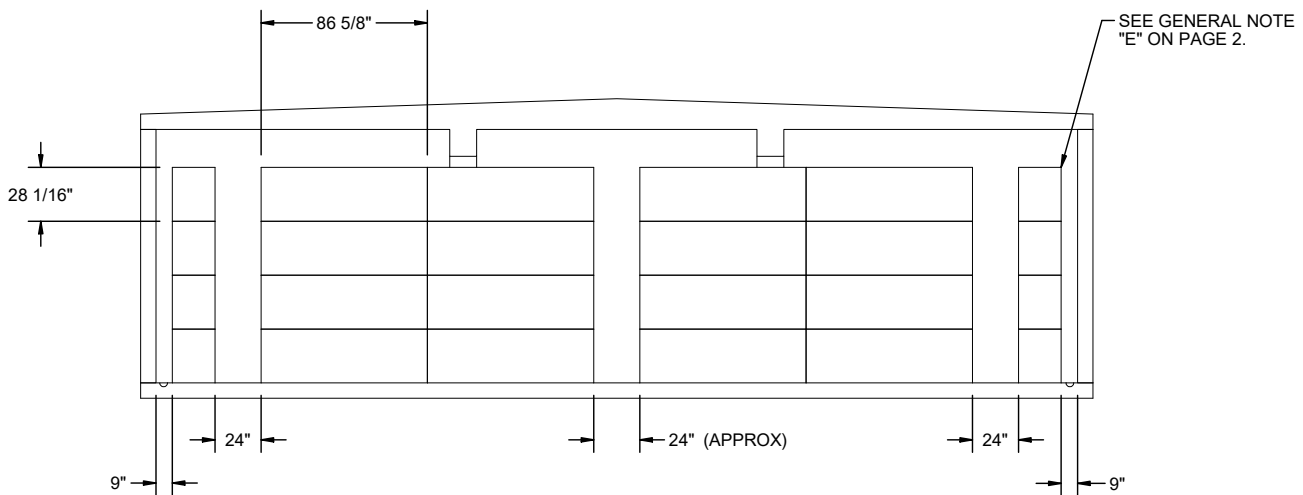
ARROWS INDICATE AFT END OF CONTAINER WITH HUMIDITY INDICATOR. SEE GENERAL NOTE "F" ON PAGE 2.

INSPECTION AISLE. SEE GENERAL NOTE "F" ON PAGE 2.

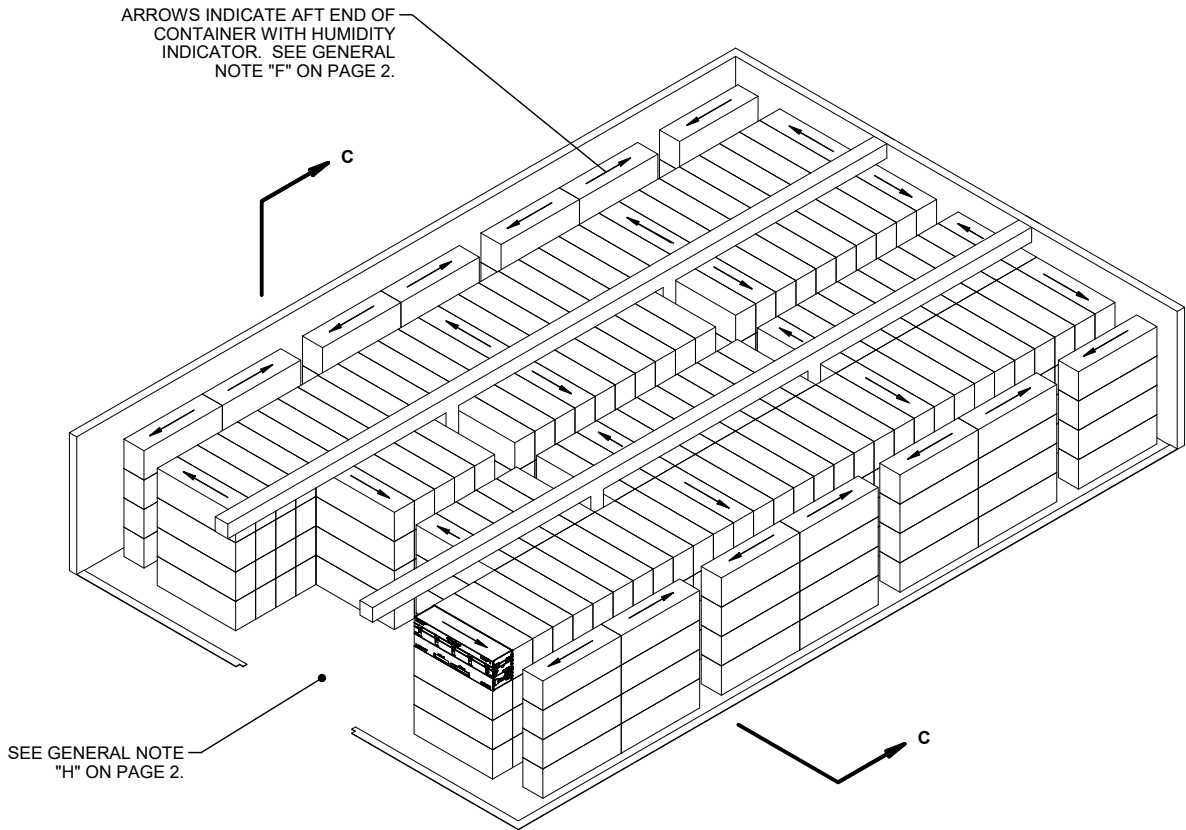


**PLAN VIEW**

INDICATES NUMBER OF STACKED LAYERS.



**SECTION C-C**



**ISOMETRIC VIEW**  
(TYPE III BUNKER MAGAZINE)

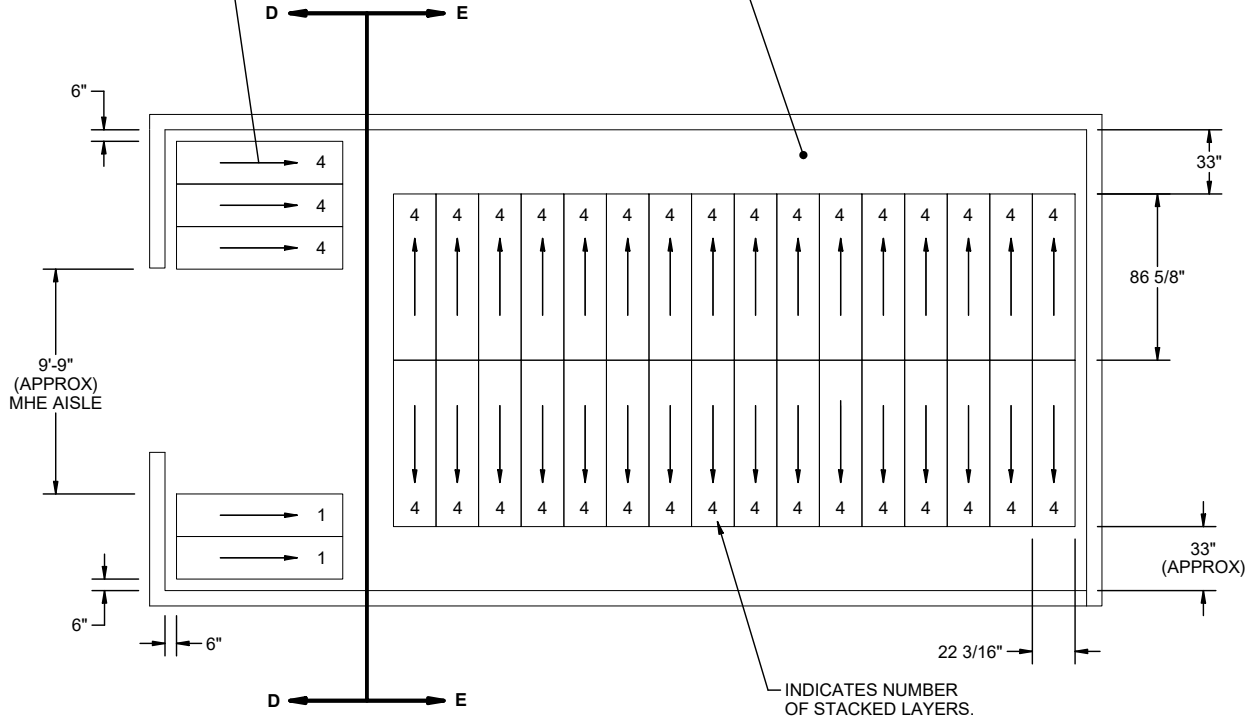
**60'-0" L X 40'-0" W X 11'-0" H TYPE III BUNKER MAGAZINE**

**STORAGE IN TYPE IV BUNKER  
MAGAZINE**

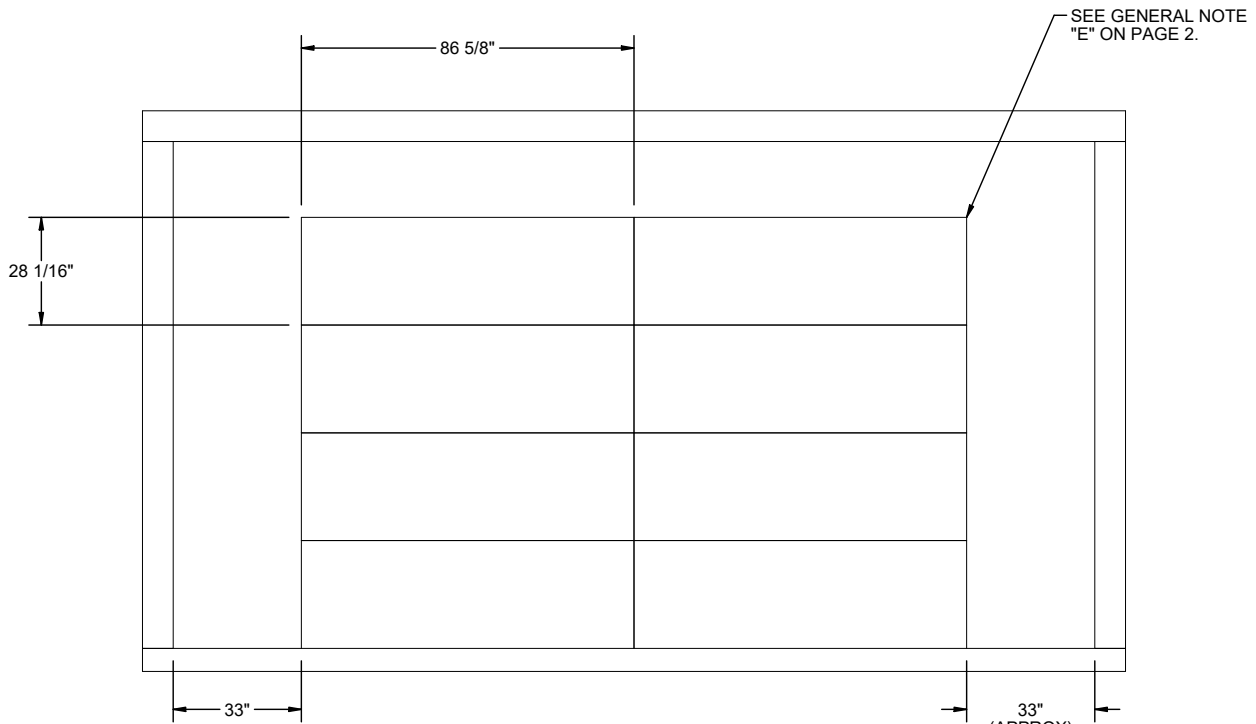
ITEM	QUANTITY
CONTAINER	----- 142

ARROWS INDICATE AFT END OF CONTAINER WITH HUMIDITY INDICATOR. SEE GENERAL NOTE "F" ON PAGE 2.

INSPECTION AISLE. SEE GENERAL NOTE "F" ON PAGE 2.

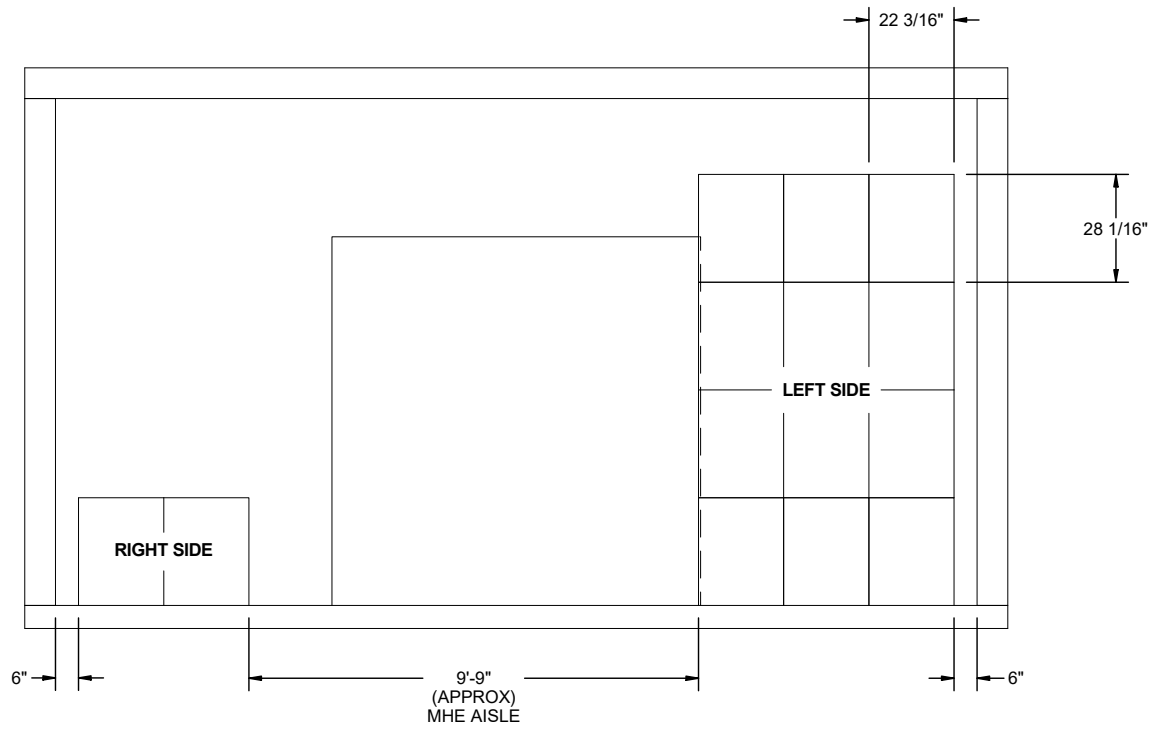


**PLAN VIEW**

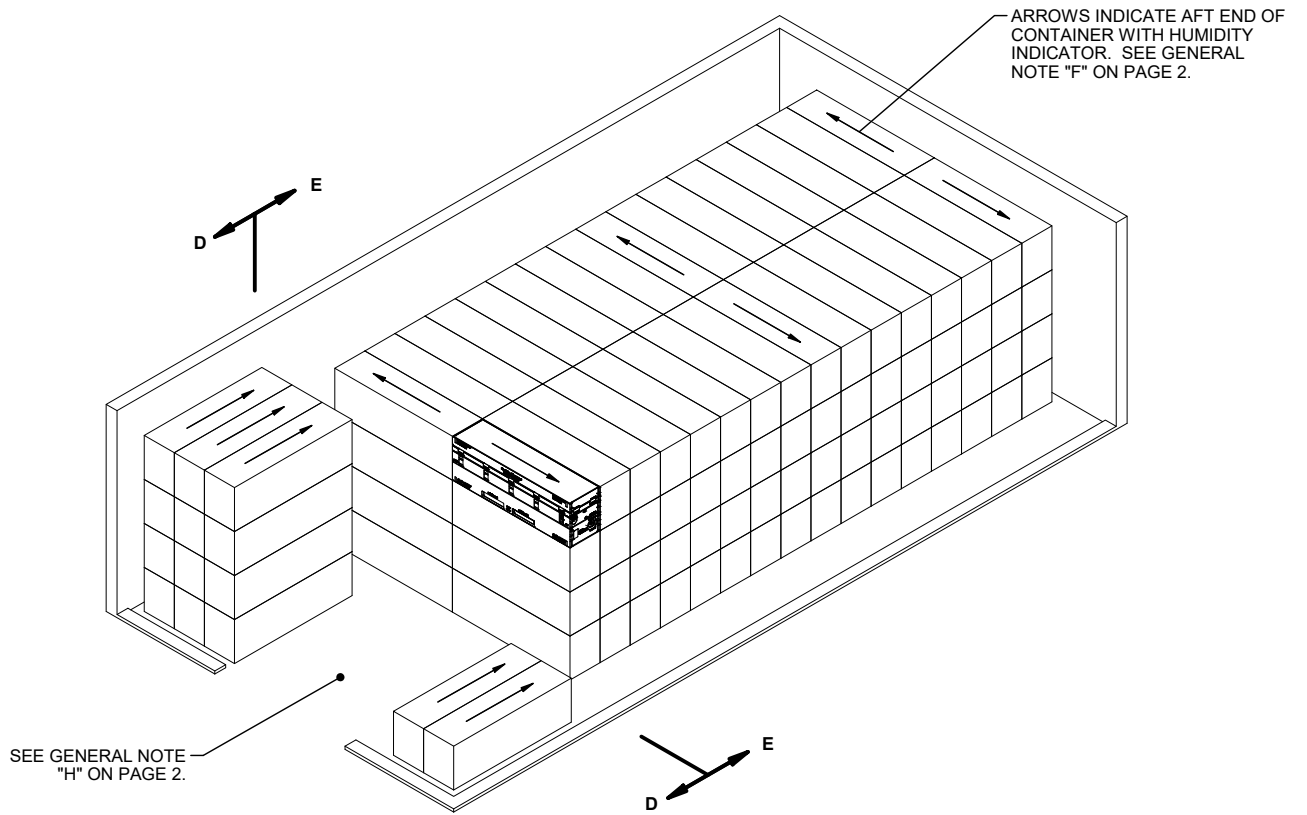


**SECTION E-E**





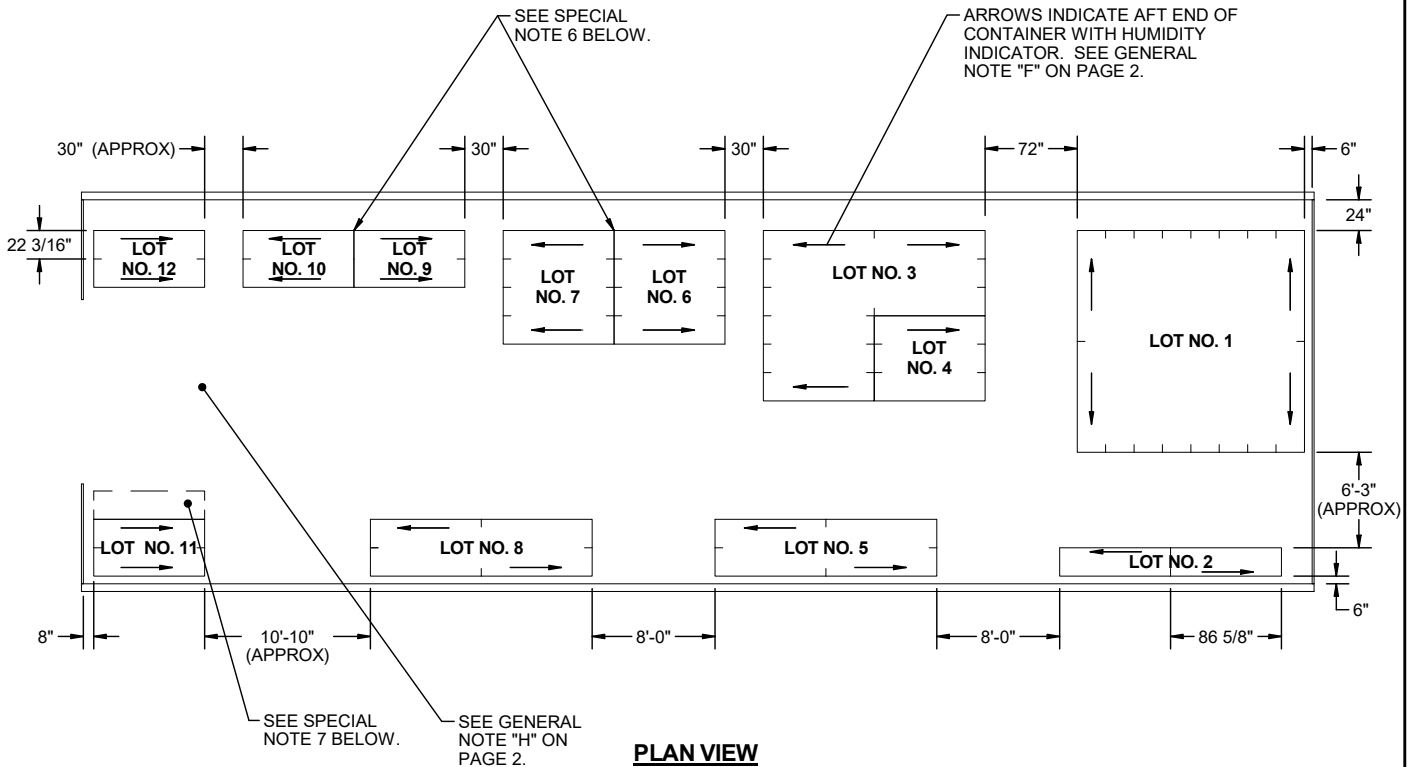
**SECTION D-D**



**ISOMETRIC VIEW**

(TYPE IV BUNKER MAGAZINE)

**40'-0" L X 20'-0" W X 11'-0" H TYPE IV BUNKER MAGAZINE**



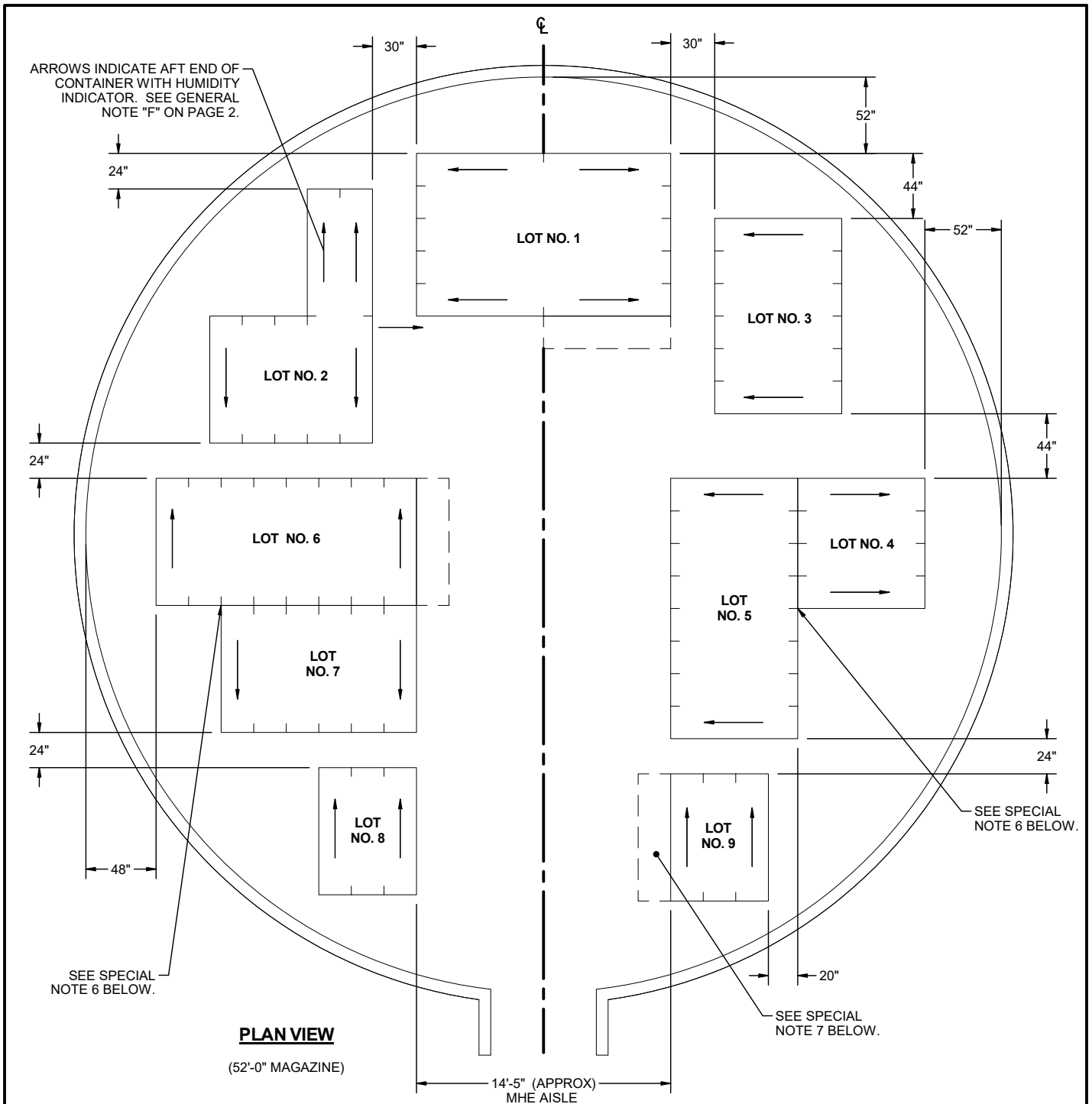
**SPECIAL NOTES:**

1. THE STORAGE PLAN SHOWN IN THIS PAGE IS TYPICAL ONLY, AND APPLIES TO NUMEROUS LOTS. ADAPTATIONS MAY BE MADE AS REQUIRED TO ACCOMMODATE NUMBER AND SIZES OF LOTS TO BE STORED.
2. AN INSPECTION/INVENTORY AISLE NOT LESS THAN 24" WIDE MUST BE PROVIDED AT ONE SIDE OR END OF EACH LOT.
3. GENERALLY, THE LARGEST LOT SHOULD BE STORED IN THE REAR OR ON ONE SIDE OF THE MAGAZINE. HOWEVER, THESE AREAS MAY BE USED TO STORE MORE THAN ONE LOT BY ERECTING STACKS SIMILAR TO THOSE SHOWN IN THE FRONTAL AREA. AN MHE AISLE WILL BE REQUIRED ON ONE SIDE OF THE MAGAZINE, AND EACH LOT MUST BE ACCESSIBLE FOR REMOVAL AND INSPECTION/INVENTORY IN ACCORDANCE WITH OTHER CRITERIA SPECIFIED IN THESE SPECIAL NOTES AND IN THE GENERAL NOTES ON PAGE 2.

(CONTINUED AT RIGHT)

**(SPECIAL NOTES CONTINUED)**

4. EACH LOT WITHIN THE MAGAZINE MUST BE ACCESSIBLE FOR MOVEMENT BY MHE. CONTAINERS OF A LOT ARE CONSIDERED "ACCESSIBLE" IF NO MORE THAN 12 "LIFTS" OF ANOTHER LOT OR LOTS HAVE TO BE MADE TO GAIN ACCESS TO THE LOT CONTAINER. A "LIFT" MAY CONSIST OF ONE OR MORE CONTAINERS, PROVIDING THE CAPACITY OF THE MHE PERMITS, AND SAFE HANDLING IS NOT JEOPARDIZED.
5. FOR STORAGE OF MULTIPLE LOTS, THE DISTANCE FROM THE SIDEWALL WILL BE BASED ON THE OVERHEAD CLEARANCE REQUIRED FOR MHE.
6. WHEN TWO LOTS ARE STORED ADJACENT TO EACH OTHER, THEY SHOULD BE SEPARATED BY AT LEAST 1" TO PROVIDE CLEARANCE FOR REMOVAL OF EITHER LOT.
7. THE MHE AISLE MAY BE USED TO STORE ONE OR MORE STACKS OF ADDITIONAL LOTS OR ADDITIONAL UNITS THAT ARE FROM A LOT ADJACENT TO THE MHE AISLE. ADEQUATE SPACE FROM MHE OPERATION MUST BE MADE AVAILABLE FOR THE ADDITIONAL STORAGE. ALSO, COMPLIANCE WITH ALL MULTIPLE-LOT CRITERIA AS SET FORTH ON THIS PAGE MUST BE OBSERVED.



**SPECIAL NOTES:**

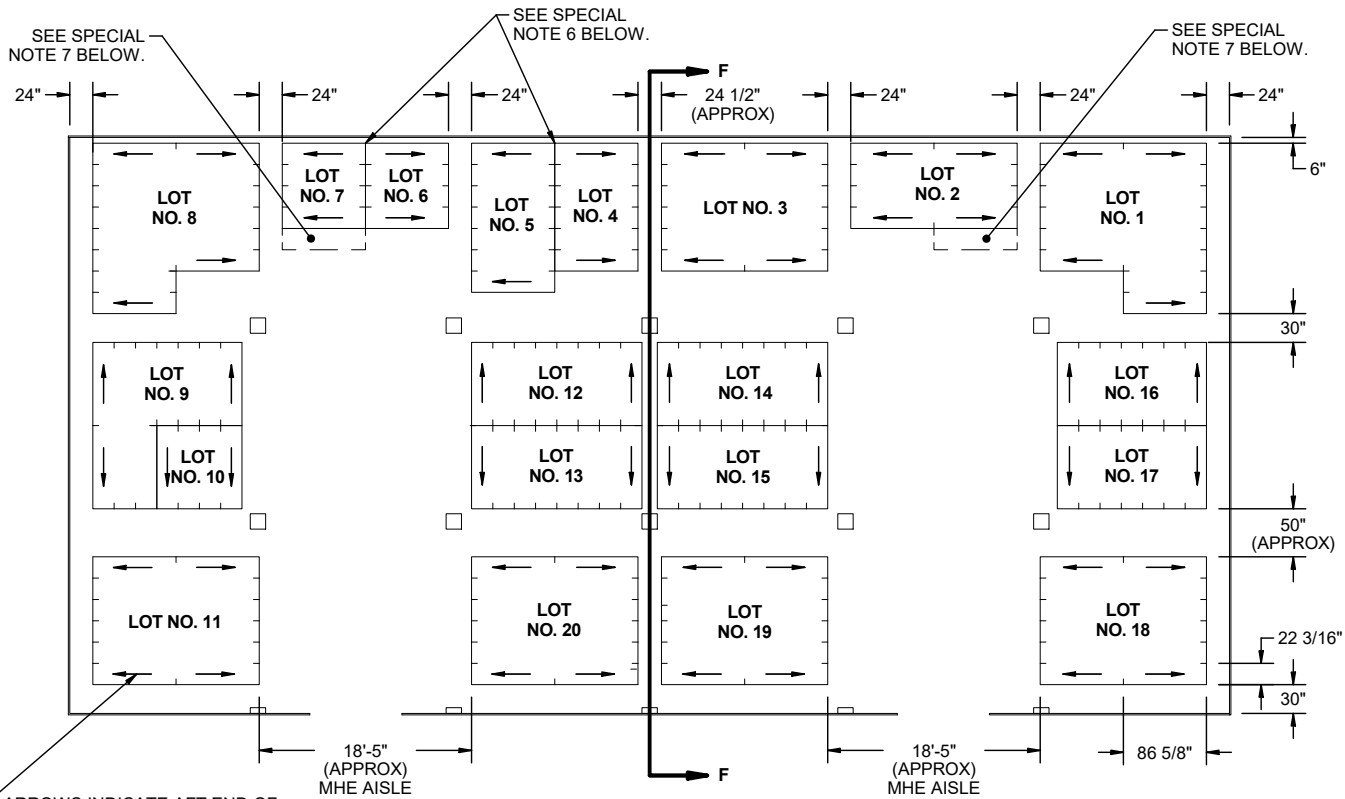
1. THE STORAGE PLAN SHOWN IN THIS PAGE IS TYPICAL ONLY, AND APPLIES TO NUMEROUS LOTS. ADAPTATIONS MAY BE MADE AS REQUIRED TO ACCOMMODATE NUMBER AND SIZES OF LOTS TO BE STORED.
2. AN INSPECTION/INVENTORY AISLE NOT LESS THAN 24" WIDE MUST BE PROVIDED AT ONE SIDE OR END OF EACH LOT.
3. GENERALLY, THE LARGEST LOT SHOULD BE STORED IN THE REAR OR ON ONE SIDE OF THE MAGAZINE. HOWEVER, THESE AREAS MAY BE USED TO STORE MORE THAN ONE LOT BY ERECTING STACKS SIMILAR TO THOSE SHOWN IN THE FRONTAL AREA. AN MHE AISLE WILL BE REQUIRED ON ONE SIDE OF THE MAGAZINE, AND EACH LOT MUST BE ACCESSIBLE FOR REMOVAL AND INSPECTION/INVENTORY IN ACCORDANCE WITH OTHER CRITERIA SPECIFIED IN THESE SPECIAL NOTES AND IN THE GENERAL NOTES ON PAGE 2.

(CONTINUED AT RIGHT)

**(SPECIAL NOTES CONTINUED)**

4. EACH LOT WITHIN THE MAGAZINE MUST BE ACCESSIBLE FOR MOVEMENT BY MHE. CONTAINERS OF A LOT ARE CONSIDERED "ACCESSIBLE" IF NO MORE THAN 12 "LIFTS" OF ANOTHER LOT OR LOTS HAVE TO BE MADE TO GAIN ACCESS TO THE LOT CONTAINER. A "LIFT" MAY CONSIST OF ONE OR MORE CONTAINERS, PROVIDING THE CAPACITY OF THE MHE PERMITS, AND SAFE HANDLING IS NOT JEOPARDIZED.
5. FOR STORAGE OF MULTIPLE LOTS, THE DISTANCE FROM THE SIDEWALL WILL BE BASED ON THE OVERHEAD CLEARANCE REQUIRED FOR MHE.
6. WHEN TWO LOTS ARE STORED ADJACENT TO EACH OTHER, THEY SHOULD BE SEPARATED BY AT LEAST 1" TO PROVIDE CLEARANCE FOR REMOVAL OF EITHER LOT.
7. THE MHE AISLE MAY BE USED TO STORE ONE OR MORE STACKS OF ADDITIONAL LOTS OR ADDITIONAL UNITS THAT ARE FROM A LOT ADJACENT TO THE MHE AISLE. ADEQUATE SPACE FROM MHE OPERATION MUST BE MADE AVAILABLE FOR THE ADDITIONAL STORAGE. ALSO, COMPLIANCE WITH ALL MULTIPLE-LOT CRITERIA AS SET FORTH ON THIS PAGE MUST BE OBSERVED.

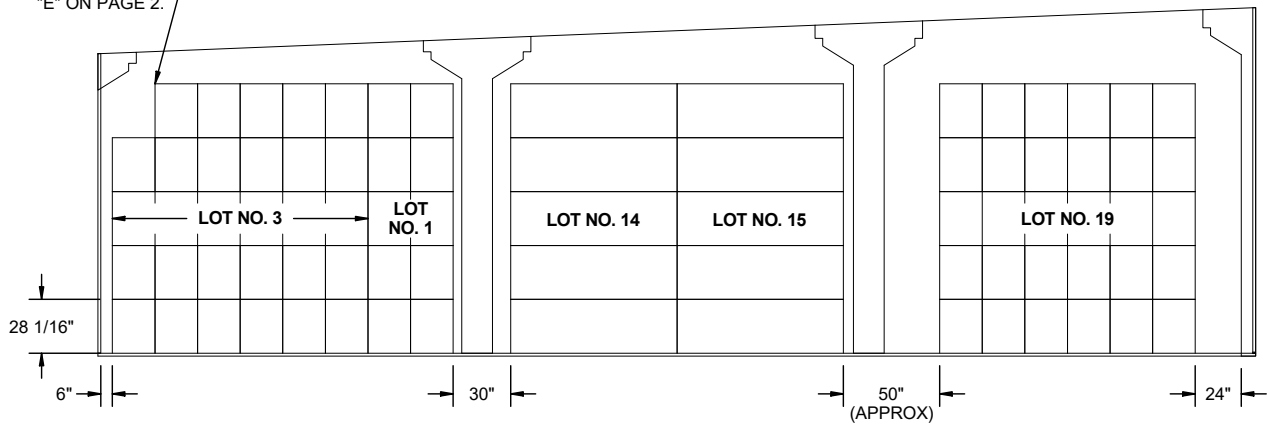
**TYPICAL MULTIPLE-LOT STORAGE IN CORBETTA MAGAZINE**



**PLAN VIEW**

ARROWS INDICATE AFT END OF CONTAINER WITH HUMIDITY INDICATOR. SEE GENERAL NOTE "F" ON PAGE 2.

SEE GENERAL NOTE "E" ON PAGE 2.



**SECTION F-F**

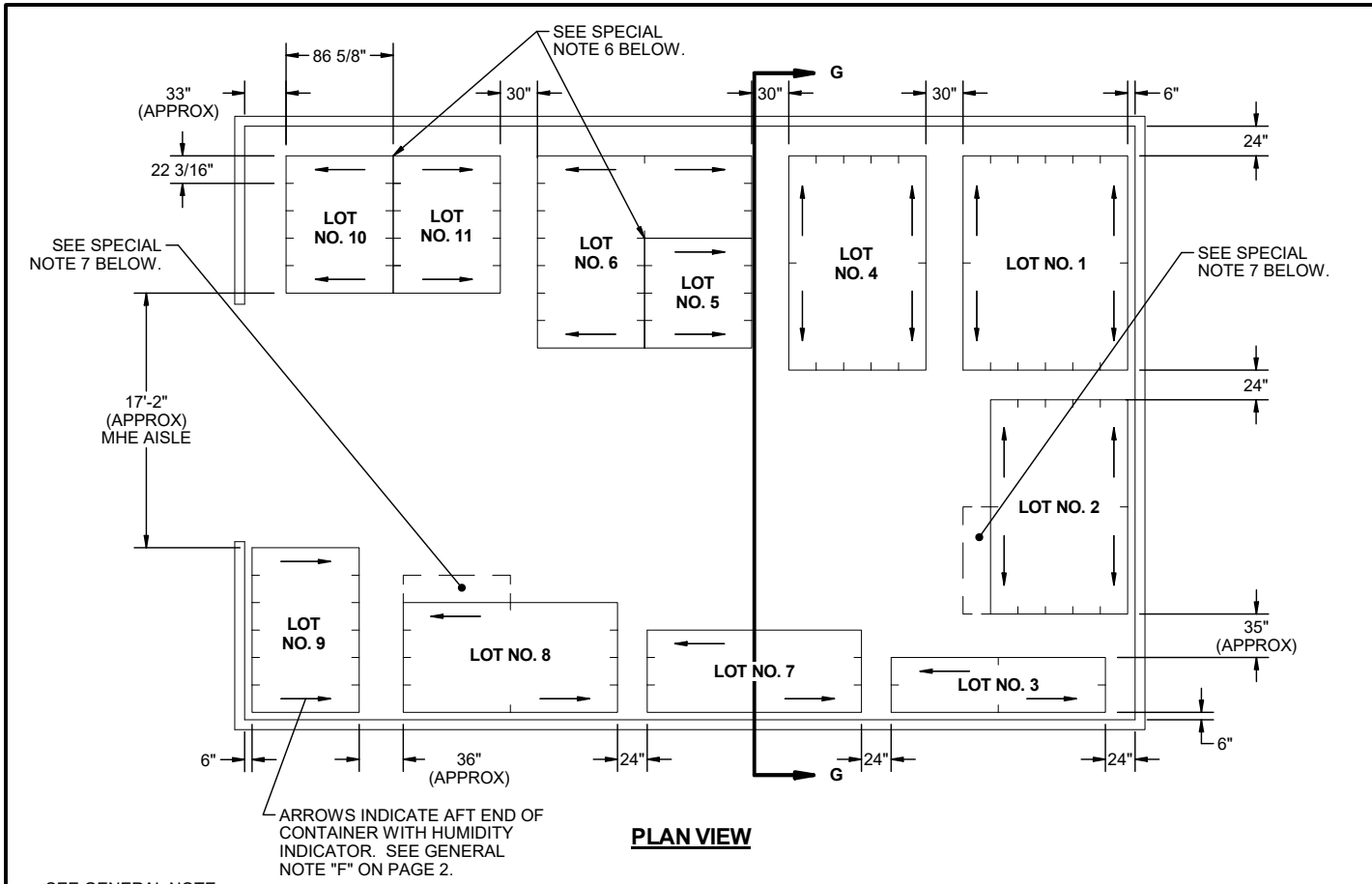
**SPECIAL NOTES:**

1. THE STORAGE PLAN SHOWN IN THIS PAGE IS TYPICAL ONLY, AND APPLIES TO NUMEROUS LOTS. ADAPTATIONS MAY BE MADE AS REQUIRED TO ACCOMMODATE NUMBER AND SIZES OF LOTS TO BE STORED.
2. AN INSPECTION/INVENTORY AISLE NOT LESS THAN 24" WIDE MUST BE PROVIDED AT ONE SIDE OR END OF EACH LOT.
3. GENERALLY, THE LARGEST LOT SHOULD BE STORED IN THE REAR OR ON ONE SIDE OF THE MAGAZINE. HOWEVER, THESE AREAS MAY BE USED TO STORE MORE THAN ONE LOT BY ERECTING STACKS SIMILAR TO THOSE SHOWN IN THE FRONTAL AREA. AN MHE AISLE WILL BE REQUIRED ON ONE SIDE OF THE MAGAZINE, AND EACH LOT MUST BE ACCESSIBLE FOR REMOVAL AND INSPECTION/INVENTORY IN ACCORDANCE WITH OTHER CRITERIA SPECIFIED IN THESE SPECIAL NOTES AND IN THE GENERAL NOTES ON PAGE 2.

(CONTINUED AT RIGHT)

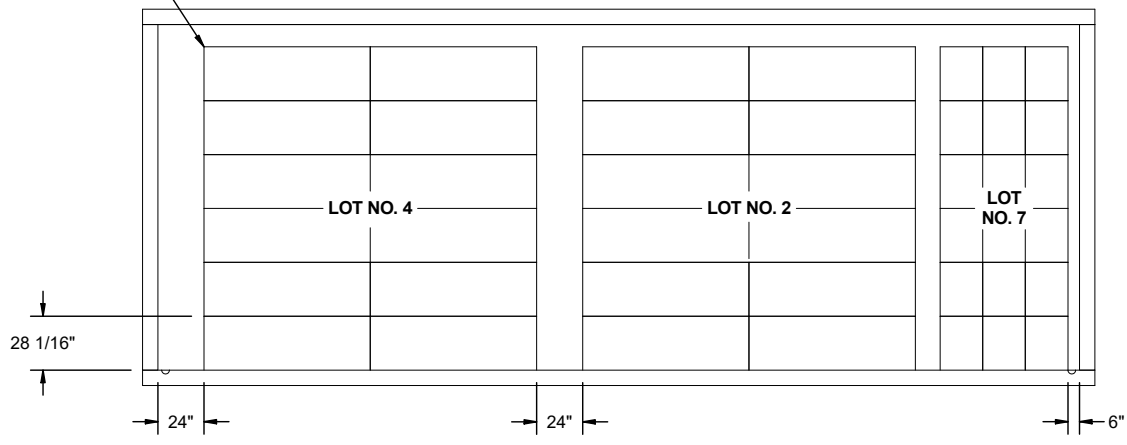
**(SPECIAL NOTES CONTINUED)**

4. EACH LOT WITHIN THE MAGAZINE MUST BE ACCESSIBLE FOR MOVEMENT BY MHE. CONTAINERS OF A LOT ARE CONSIDERED "ACCESSIBLE" IF NO MORE THAN 24 "LIFTS" OF ANOTHER LOT OR LOTS HAVE TO BE MADE TO GAIN ACCESS TO THE LOT CONTAINER. A "LIFT" MAY CONSIST OF ONE OR MORE CONTAINERS, PROVIDING THE CAPACITY OF THE MHE PERMITS, AND SAFE HANDLING IS NOT JEOPARDIZED.
5. FOR STORAGE OF MULTIPLE LOTS, THE DISTANCE FROM THE SIDEWALL WILL BE BASED ON THE OVERHEAD CLEARANCE REQUIRED FOR MHE.
6. WHEN TWO LOTS ARE STORED ADJACENT TO EACH OTHER, THEY SHOULD BE SEPARATED BY AT LEAST 1" TO PROVIDE CLEARANCE FOR REMOVAL OF EITHER LOT.
7. THE MHE AISLE MAY BE USED TO STORE ONE OR MORE STACKS OF ADDITIONAL LOTS OR ADDITIONAL UNITS THAT ARE FROM A LOT ADJACENT TO THE MHE AISLE. ADEQUATE SPACE FROM MHE OPERATION MUST BE MADE AVAILABLE FOR THE ADDITIONAL STORAGE. ALSO, COMPLIANCE WITH ALL MULTIPLE-LOT CRITERIA AS SET FORTH ON THIS PAGE MUST BE OBSERVED.



**PLAN VIEW**

SEE GENERAL NOTE "E" ON PAGE 2.



**SECTION G-G**

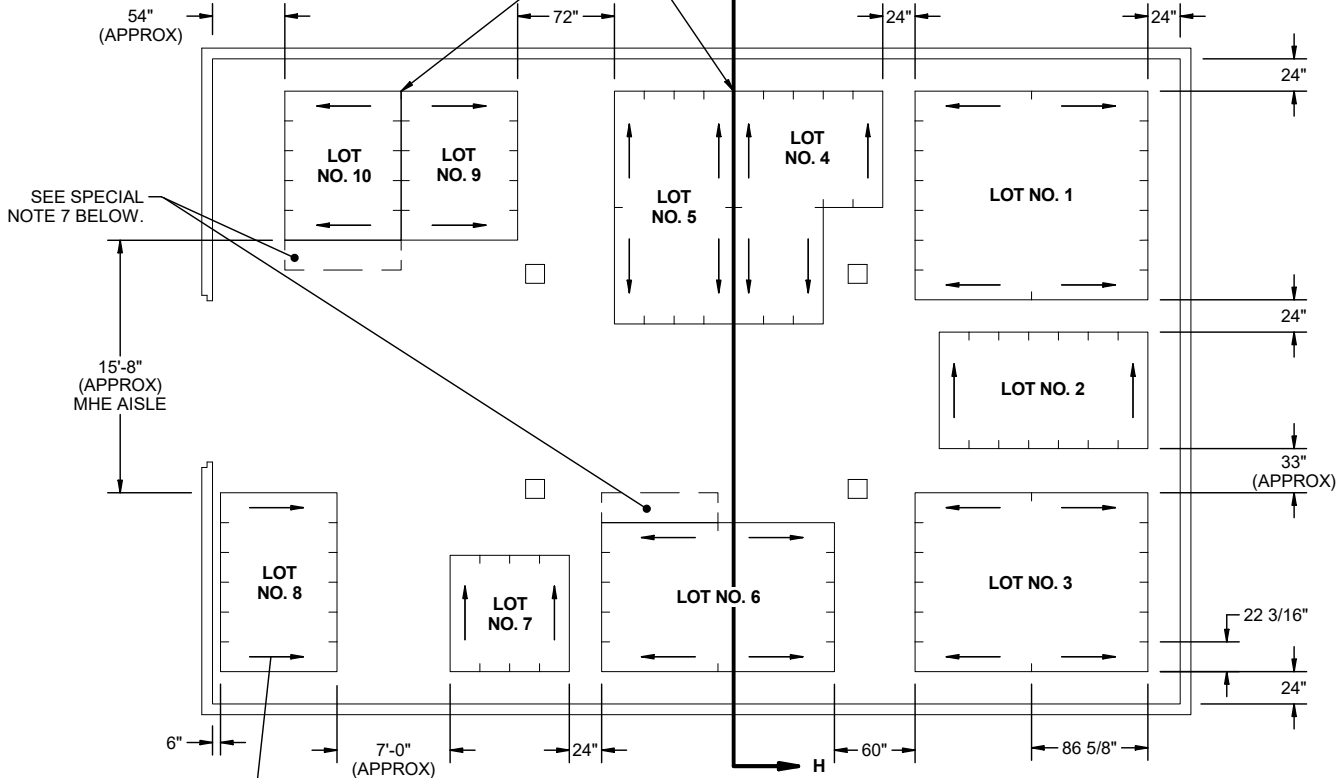
**SPECIAL NOTES:**

**(SPECIAL NOTES CONTINUED)**

1. THE STORAGE PLAN SHOWN IN THIS PAGE IS TYPICAL ONLY, AND APPLIES TO NUMEROUS LOTS. ADAPTATIONS MAY BE MADE AS REQUIRED TO ACCOMMODATE NUMBER AND SIZES OF LOTS TO BE STORED.
2. AN INSPECTION/INVENTORY AISLE NOT LESS THAN 24" WIDE MUST BE PROVIDED AT ONE SIDE OR END OF EACH LOT.
3. GENERALLY, THE LARGEST LOT SHOULD BE STORED IN THE REAR OR ON ONE SIDE OF THE MAGAZINE. HOWEVER, THESE AREAS MAY BE USED TO STORE MORE THAN ONE LOT BY ERECTING STACKS SIMILAR TO THOSE SHOWN IN THE FRONTAL AREA. AN MHE AISLE WILL BE REQUIRED ON ONE SIDE OF THE MAGAZINE, AND EACH LOT MUST BE ACCESSIBLE FOR REMOVAL AND INSPECTION/INVENTORY IN ACCORDANCE WITH OTHER CRITERIA SPECIFIED IN THESE SPECIAL NOTES AND IN THE GENERAL NOTES ON PAGE 2.
4. EACH LOT WITHIN THE MAGAZINE MUST BE ACCESSIBLE FOR MOVEMENT BY MHE. CONTAINERS OF A LOT ARE CONSIDERED "ACCESSIBLE" IF NO MORE THAN 12 "LIFTS" OF ANOTHER LOT OR LOTS HAVE TO BE MADE TO GAIN ACCESS TO THE LOT CONTAINER. A "LIFT" MAY CONSIST OF ONE OR MORE CONTAINERS, PROVIDING THE CAPACITY OF THE MHE PERMITS, AND SAFE HANDLING IS NOT JEOPARDIZED.
5. FOR STORAGE OF MULTIPLE LOTS, THE DISTANCE FROM THE SIDEWALL WILL BE BASED ON THE OVERHEAD CLEARANCE REQUIRED FOR MHE.
6. WHEN TWO LOTS ARE STORED ADJACENT TO EACH OTHER, THEY SHOULD BE SEPARATED BY AT LEAST 1" TO PROVIDE CLEARANCE FOR REMOVAL OF EITHER LOT.
7. THE MHE AISLE MAY BE USED TO STORE ONE OR MORE STACKS OF ADDITIONAL LOTS OR ADDITIONAL UNITS THAT ARE FROM A LOT ADJACENT TO THE MHE AISLE. ADEQUATE SPACE FROM MHE OPERATION MUST BE MADE AVAILABLE FOR THE ADDITIONAL STORAGE. ALSO, COMPLIANCE WITH ALL MULTIPLE-LOT CRITERIA AS SET FORTH ON THIS PAGE MUST BE OBSERVED.

(CONTINUED AT RIGHT)

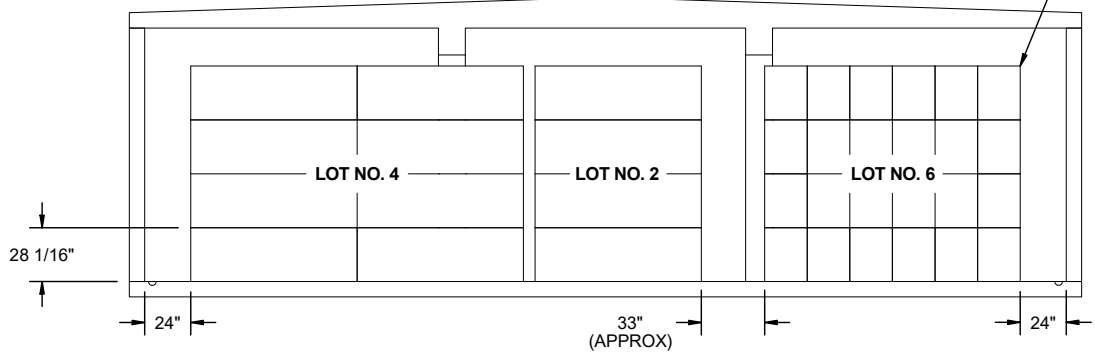
SEE SPECIAL NOTE 6 BELOW.



ARROWS INDICATE AFT END OF CONTAINER WITH HUMIDITY INDICATOR. SEE GENERAL NOTE "F" ON PAGE 2.

**PLAN VIEW**

SEE GENERAL NOTE "E" ON PAGE 2.



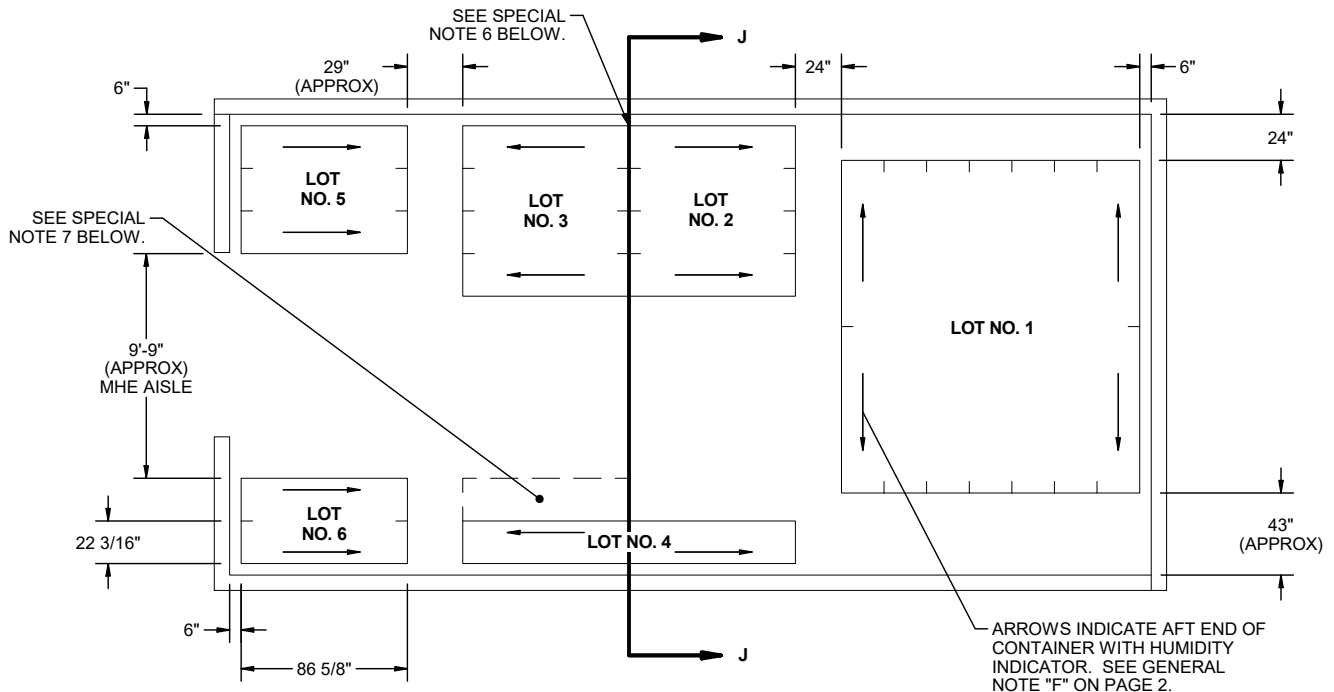
**SECTION H-H**

**SPECIAL NOTES:**

**(SPECIAL NOTES CONTINUED)**

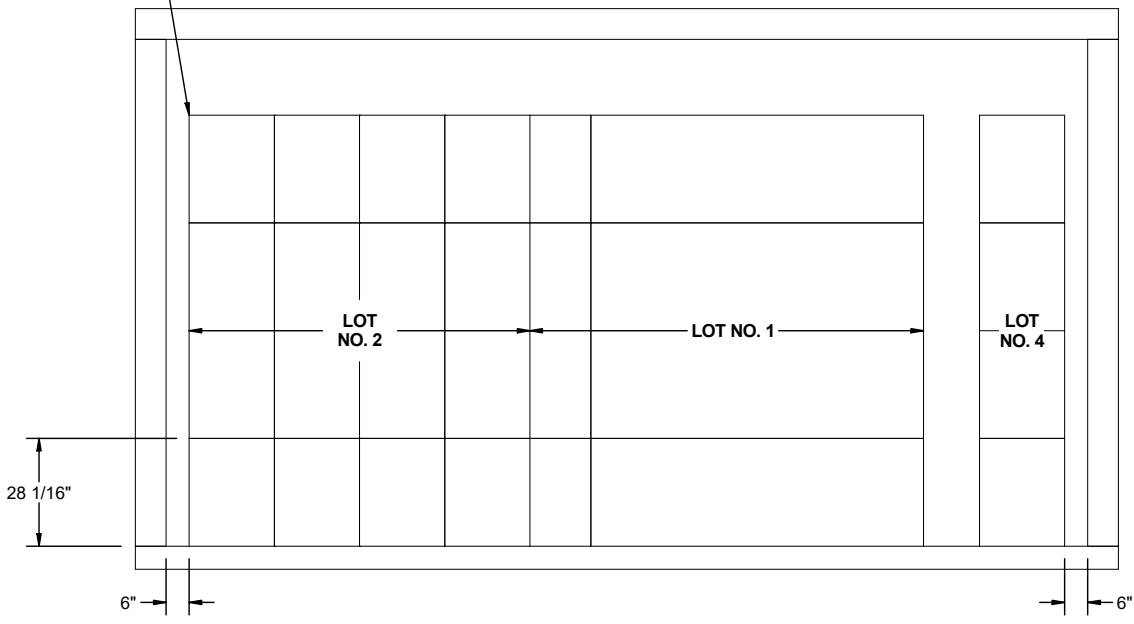
1. THE STORAGE PLAN SHOWN IN THIS PAGE IS TYPICAL ONLY, AND APPLIES TO NUMEROUS LOTS. ADAPTATIONS MAY BE MADE AS REQUIRED TO ACCOMMODATE NUMBER AND SIZES OF LOTS TO BE STORED.
2. AN INSPECTION/INVENTORY AISLE NOT LESS THAN 24" WIDE MUST BE PROVIDED AT ONE SIDE OR END OF EACH LOT.
3. GENERALLY, THE LARGEST LOT SHOULD BE STORED IN THE REAR OR ON ONE SIDE OF THE MAGAZINE. HOWEVER, THESE AREAS MAY BE USED TO STORE MORE THAN ONE LOT BY ERECTING STACKS SIMILAR TO THOSE SHOWN IN THE FRONTAL AREA. AN MHE AISLE WILL BE REQUIRED ON ONE SIDE OF THE MAGAZINE, AND EACH LOT MUST BE ACCESSIBLE FOR REMOVAL AND INSPECTION/INVENTORY IN ACCORDANCE WITH OTHER CRITERIA SPECIFIED IN THESE SPECIAL NOTES AND IN THE GENERAL NOTES ON PAGE 2.
4. EACH LOT WITHIN THE MAGAZINE MUST BE ACCESSIBLE FOR MOVEMENT BY MHE. CONTAINERS OF A LOT ARE CONSIDERED "ACCESSIBLE" IF NO MORE THAN 12 "LIFTS" OF ANOTHER LOT OR LOTS HAVE TO BE MADE TO GAIN ACCESS TO THE LOT CONTAINER. A "LIFT" MAY CONSIST OF ONE OR MORE CONTAINERS, PROVIDING THE CAPACITY OF THE MHE PERMITS, AND SAFE HANDLING IS NOT JEOPARDIZED.
5. FOR STORAGE OF MULTIPLE LOTS, THE DISTANCE FROM THE SIDEWALL WILL BE BASED ON THE OVERHEAD CLEARANCE REQUIRED FOR MHE.
6. WHEN TWO LOTS ARE STORED ADJACENT TO EACH OTHER, THEY SHOULD BE SEPARATED BY AT LEAST 1" TO PROVIDE CLEARANCE FOR REMOVAL OF EITHER LOT.
7. THE MHE AISLE MAY BE USED TO STORE ONE OR MORE STACKS OF ADDITIONAL LOTS OR ADDITIONAL UNITS THAT ARE FROM A LOT ADJACENT TO THE MHE AISLE. ADEQUATE SPACE FROM MHE OPERATION MUST BE MADE AVAILABLE FOR THE ADDITIONAL STORAGE. ALSO, COMPLIANCE WITH ALL MULTIPLE-LOT CRITERIA AS SET FORTH ON THIS PAGE MUST BE OBSERVED.

(CONTINUED AT RIGHT)



**PLAN VIEW**

SEE GENERAL NOTE "E" ON PAGE 2.



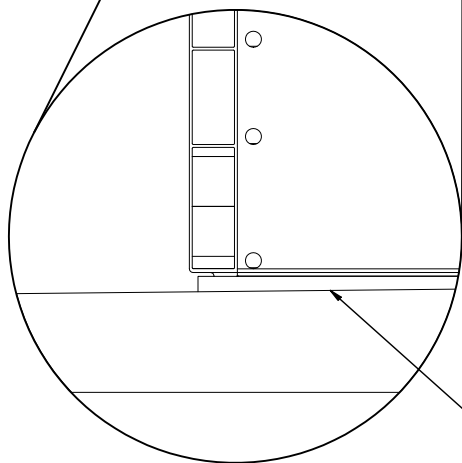
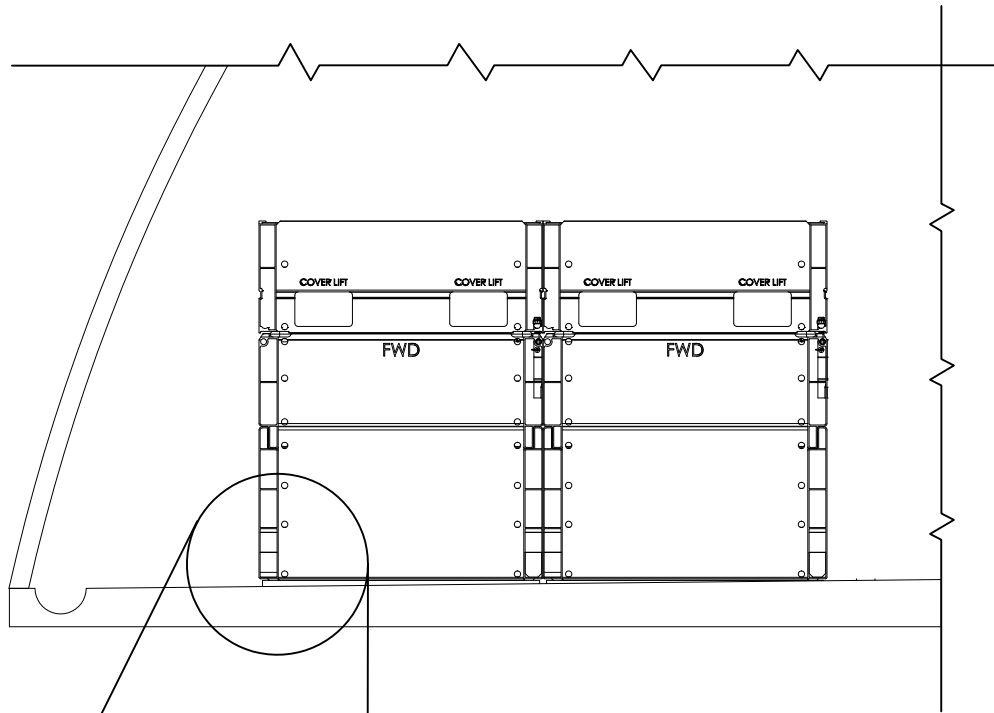
**SECTION J-J**

**SPECIAL NOTES:**

**(SPECIAL NOTES CONTINUED)**

1. THE STORAGE PLAN SHOWN IN THIS PAGE IS TYPICAL ONLY, AND APPLIES TO NUMEROUS LOTS. ADAPTATIONS MAY BE MADE AS REQUIRED TO ACCOMMODATE NUMBER AND SIZES OF LOTS TO BE STORED.
2. AN INSPECTION/INVENTORY AISLE NOT LESS THAN 24" WIDE MUST BE PROVIDED AT ONE SIDE OR END OF EACH LOT.
3. GENERALLY, THE LARGEST LOT SHOULD BE STORED IN THE REAR OR ON ONE SIDE OF THE MAGAZINE. HOWEVER, THESE AREAS MAY BE USED TO STORE MORE THAN ONE LOT BY ERECTING STACKS SIMILAR TO THOSE SHOWN IN THE FRONTAL AREA. AN MHE AISLE WILL BE REQUIRED ON ONE SIDE OF THE MAGAZINE, AND EACH LOT MUST BE ACCESSIBLE FOR REMOVAL AND INSPECTION/INVENTORY IN ACCORDANCE WITH OTHER CRITERIA SPECIFIED IN THESE SPECIAL NOTES AND IN THE GENERAL NOTES ON PAGE 2.
4. EACH LOT WITHIN THE MAGAZINE MUST BE ACCESSIBLE FOR MOVEMENT BY MHE. CONTAINERS OF A LOT ARE CONSIDERED "ACCESSIBLE" IF NO MORE THAN 12 "LIFTS" OF ANOTHER LOT OR LOTS HAVE TO BE MADE TO GAIN ACCESS TO THE LOT CONTAINER. A "LIFT" MAY CONSIST OF ONE OR MORE CONTAINERS, PROVIDING THE CAPACITY OF THE MHE PERMITS, AND SAFE HANDLING IS NOT JEOPARDIZED.
5. FOR STORAGE OF MULTIPLE LOTS, THE DISTANCE FROM THE SIDEWALL WILL BE BASED ON THE OVERHEAD CLEARANCE REQUIRED FOR MHE.
6. WHEN TWO LOTS ARE STORED ADJACENT TO EACH OTHER, THEY SHOULD BE SEPARATED BY AT LEAST 1" TO PROVIDE CLEARANCE FOR REMOVAL OF EITHER LOT.
7. THE MHE AISLE MAY BE USED TO STORE ONE OR MORE STACKS OF ADDITIONAL LOTS OR ADDITIONAL UNITS THAT ARE FROM A LOT ADJACENT TO THE MHE AISLE. ADEQUATE SPACE FROM MHE OPERATION MUST BE MADE AVAILABLE FOR THE ADDITIONAL STORAGE. ALSO, COMPLIANCE WITH ALL MULTIPLE-LOT CRITERIA AS SET FORTH ON THIS PAGE MUST BE OBSERVED.

(CONTINUED AT RIGHT)



SHIM (AS REQD TO PROVIDE A LEVEL BEARING SURFACE FOR THE FIRST LAYER CONTAINERS). POSITION UNDER CONTAINER SKIDS. SEE GENERAL NOTE "P" ON PAGE 2.

**SHIM LOCATION DETAIL**