

STORAGE IN APPROVED MAGAZINES OF SIDEWINDER (AIM-9X) MISSILE PACKED FOUR PER CNU-609 CON- TAINER

<u>ITEM</u>	<u>INDEX</u>	<u>PAGE(S)</u>
GENERAL NOTES AND MATERIAL SPECIFICATION - - - - -		2
CONTAINER DETAILS - - - - -		3
TYPICAL STORAGE IN ARCHED OR ROUNDED ROOF MAGAZINES - - - - -		4-7
CORBETTA MAGAZINE - - - - -		8, 9
100'-8" L X 50'-0" W RECTANGULAR MAGAZINE - - - - -		10, 11
60'-0" L X 40'-0" W X 15'-0" H TYPE II BUNKER MAGAZINE - - - - -		12, 13
60'-0" L X 40'-0" W X 11'-0" H TYPE III BUNKER MAGAZINE - - - - -		14, 15
40'-0" L X 20'-0" W X 11'-0" H TYPE IV BUNKER MAGAZINE - - - - -		16, 17
DETAILS - - - - -		18

U.S. ARMY MATERIEL COMMAND DRAWING

APPROVED, U.S. ARMY RESEARCH, DEVELOPMENT
AND ENGINEERING COMMAND *frw*

David A. Peshonch

**CAUTION: VERIFY PRIOR TO USE AT WWW.DAC.ARMY.MIL THAT THIS IS
THE MOST CURRENT VERSION OF THIS DOCUMENT. THIS IS PAGE 1 OF 18.**

DO NOT SCALE

APRIL 2007

ENGINEER OR TECHNICIAN	BASIC REV.	ADIN FELICIANO
------------------------------	---------------	-----------------------

APPROVED BY ORDER OF COMMANDING
GENERAL, U.S. ARMY MATERIEL COMMAND

Charles P. Ford

TRANSPORTATION ENGINEERING DIVISION	<i>Raura A. Juffe</i>	TESTED
---	-----------------------	--------

VALIDATION ENGINEERING DIVISION	<i>Philip W. B...</i>	TESTED
---------------------------------------	-----------------------	--------

ENGINEERING DIRECTORATE	<i>Ray W. L...</i>	TESTED
----------------------------	--------------------	--------

CLASS	DIVISION	DRAWING	FILE
19	48	8847	SP1-3-4-14- 22-J54

U.S. ARMY DEFENSE AMMUNITION CENTER

GENERAL NOTES

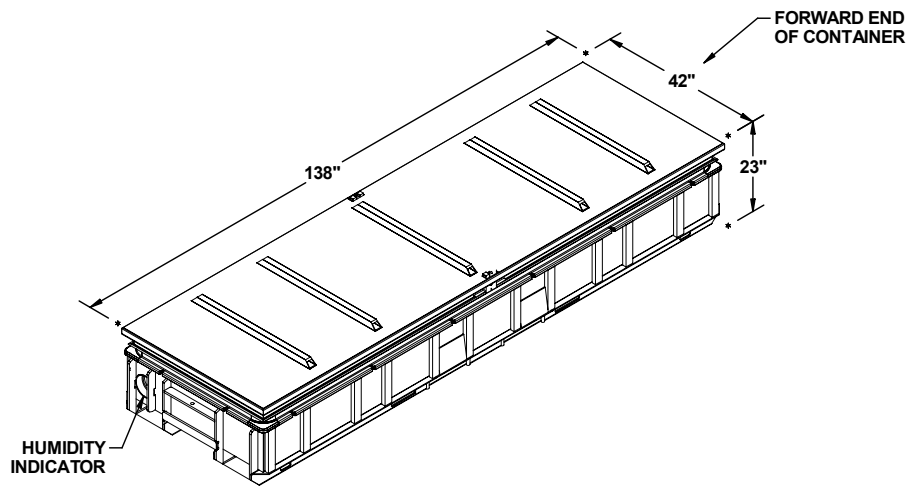
(GENERAL NOTES CONTINUED)

- A. THIS DOCUMENT HAS BEEN PREPARED AND ISSUED IN ACCORDANCE WITH AR 740-1 AND AUGMENTS TM 743-200-1 (CHAPTER 5).
- B. THE STORAGE PROCEDURES DEPICTED WITHIN THIS DOCUMENT ARE APPLICABLE FOR STORAGE IN VARIOUS TYPES AND SIZES OF MAGAZINES. THE STORAGE PROCEDURES DEPICTED FOR THE SPECIFIC TYPES OF MAGAZINES MAY ALSO BE UTILIZED TO STORE SIDEWINDER MISSILES IN OTHER TYPES OF APPROVED MAGAZINES. MINOR ADJUSTMENTS MAY BE MADE TO FACILITATE STORAGE IN OTHER TYPES OF MAGAZINES. HOWEVER, THE BASIC PRINCIPLES AS DEPICTED HEREIN WILL BE FOLLOWED.
- C. THE STORAGE PROCEDURES SPECIFIED HEREIN ARE APPLICABLE TO LOADS OF SIDEWINDER MISSILES PACKED FOUR MISSILES PER CNU-609 CONTAINER, SUBSEQUENT REFERENCE TO CONTAINER HEREIN MEANS THE CONTAINER WITH AMMUNITION ITEMS. **CAUTION:** THIS ITEM IS IN A "PROPULSIVE STATE" AND MUST BE STORED WITH THE FORWARD END FACING TOWARD A SIDEWALL OR REAR WALL AS INDICATED BY THE DIRECTIONAL ARROWS IN THE STORAGE VIEWS. NOTE THAT THE FORWARD END IS OPPOSITE TO THE END WITH THE HUMIDITY INDICATOR. FOR DETAILS OF THE CONTAINER, SEE PAGE 3 OR RAYTHEON DRAWING 2215440.
- D. THE CONTAINERS MAY BE STORED UNITIZED IN ACCORDANCE WITH NAVSEA DRAWING 6214173, BUT THIS IS NOT REQUIRED. NOTE THAT THIS COULD RESULT IN A REDUCTION OF QUANTITY STORED.
- E. **CAUTION:** THE ALLOWABLE "EXPLOSIVE LIMIT" ESTABLISHED FOR A MAGAZINE IS NOT TO BE EXCEEDED. THIS LIMITATION MAY REQUIRE A QUANTITY REDUCTION FROM THE STORAGE AS SHOWN.
- F. STORED CONTAINERS MUST NOT CONTACT THE SIDES OF A MAGAZINE. THEREFORE, CONTAINERS MUST BE STORED A MINIMUM OF 6" FROM THE SIDEWALL OR CURVATURE OF THE MAGAZINE AS APPLICABLE. TO PROVIDE FOR THIS MANDATORY CLEARANCE REQUIREMENT, CONTAINERS MAY BE ELIMINATED FROM THE DEPICTED STORAGE PATTERN AS NECESSARY.
- G. AISLE DIMENSION SHOWN FOR STORAGE PROCEDURES IN MAGAZINES MAY BE ADJUSTED TO SUIT LOCAL CONDITIONS, VARIATIONS IN CONTAINER DIMENSIONS, AND/OR AVAILABLE MATERIALS HANDLING EQUIPMENT (MHE). HOWEVER, A 24" MINIMUM INSPECTION AISLE MUST BE MAINTAINED AT THE AFT END OF THE CONTAINERS WHERE HUMIDITY INDICATORS ARE LOCATED.
- H. THE MAXIMUM FLOOR LOAD FOR A MAGAZINE AS PRESCRIBED WILL NOT BE EXCEEDED.
- J. IF AVAILABLE MHE PERMITS, ADDITIONAL CONTAINERS MAY BE STORED WITHIN THE MHE AREA AND/OR OTHER AVAILABLE AREA OF THE MAGAZINE.
- K. THE HEIGHT OF THE PACKAGE GUARD ON SOME FORKLIFT TRUCKS MAY NOT PERMIT PLACEMENT OF SOME TOP LAYER CONTAINERS IN THE STACKS SHOWN IN THE STORAGE VIEWS HEREIN, UNLESS TWO UPPER CONTAINERS ARE HANDLED AS ONE LIFT OR THE PACKAGE GUARD IS REMOVED (TINE CARRIAGE WILL IN MOST INSTANCES PROVIDE ADEQUATE PACKAGE GUARD PROTECTION). ONLY A FORKLIFT TRUCK OF ADEQUATE CAPACITY WILL BE USED WHEN LIFTING TWO CONTAINERS AS ONE LIFT.
- L. STORAGE OF MULTIPLE LOTS IN A MAGAZINE WILL REQUIRE CAREFUL PRE-PLANNING SO AS TO INSURE MHE ACCESSIBILITY TO ANY LOT IN ACCORDANCE WITH REQUIREMENTS SET FORTH IN THE APPLICABLE "SPECIAL NOTES" SECTIONS OF THE MULTIPLE LOT STORAGE PROCEDURES SHOWN ON PAGES 18 THRU 23.
- M. ALTHOUGH SPECIFIC PROCEDURES ARE INCLUDED IN THIS DRAWING FOR STORING MULTIPLE LOTS WITHIN ONE STRUCTURE, THE BASIC STORAGE PATTERN AS SHOWN ON PAGES 4 THRU 17 CAN ALSO BE ADAPTED FOR STORAGE MORE THAN ONE LOT, LOTS WHEN STORED IN ACCORDANCE WITH THE BASIC STORAGE PATTERN MAY BE STORED WITH ONE OR MORE ROWS USED FOR EACH LOT. A SPACE OF APPROXIMATELY 1" WILL HAVE TO BE LEFT BETWEEN ADJACENT ROWS CONTAINING DIFFERENT LOTS. IN BASIC STORAGE PATTERNS WHERE THE WIDTH OF A ROW IS ESTABLISHED BY THE 42" CONTAINER DIMENSION, EACH ROW MAY BE A DIFFERENT LOT AND READILY REMOVABLE. IN BASIC STORAGE PATTERNS WHERE THE WIDTH OF THE ROW IS ESTABLISHED BY THE 138" CONTAINER DIMENSION, A LOT MUST CONSIST OF TWO OR MORE ROWS TO PROVIDE ADEQUATE SPACE TO ACCOMMODATE THE WIDTH OF A FORKLIFT TRUCK FOR STORING OR REMOVING THE LOT. THE 1" SPACE BETWEEN LOTS, AS STATED ABOVE WILL NOT BE EXCEEDED SOLELY TO ACCOMMODATE THE WIDTH OF A FORKLIFT TRUCK.
- N. ANY "LIGHT" (INCOMPLETE CONTAINER) UNIT WILL NOT BE BURIED IN STORAGE, IT MUST BE POSITIONED ADJACENT TO AN AISLE, PREFERABLY IN FRONT OF THE LOT.
- O. PORTIONS OF THE MAGAZINES, SUCH AS SIDEWALLS, END WALLS, AND ROOFS HAVE NOT BEEN SHOWN IN THE STORAGE VIEWS FOR CLARITY PURPOSES.
- P. A PRODUCTION OR STORAGE FACILITY IS AUTHORIZED TO HAVE ONE INCOMPLETE, PARTIAL CONTAINER PER LOT IN A STORAGE STRUCTURE. PROVIDED THE CONTAINER MUST BE RE-PACKED AS THE ORIGINAL LOAD.
- Q. THE USE OF NOMINAL SIZE 1" X 6" X 38" OR 2" X 6" X 38" FLOOR DUNNAGE UNDER EACH END OF EACH FIRST-LAYER CONTAINER IS OPTIONAL, ALTHOUGH THE USE OF THIS TYPE OF DUNNAGE IS DELINEATED WITHIN THIS STORAGE PROCEDURE DRAWING. THE PURPOSE OF FLOOR DUNNAGE IS TO HELP KEEP THE RUNNERS OF THE CONTAINERS DRY, THUS AIDING IN PREVENTING DETEIORATION DUE TO CORROSION. THEREFORE, FLOOR DUNNAGE SHOULD BE USED WHEN STORING IN A MAGAZINE THAT IS KNOWN TO HAVE A "DAMP" FLOOR. IN IGLOO, ARCH TYPE AND STRADLEY MAGAZINES WHICH HAVE FLOOR SLOPING TOWARD THE SIDEWALLS, THE DEPICTED STORAGE PATTERNS INCLUDE CONTAINER-STACKS WHICH STRADDLE THE RIDGE OF THE FLOOR AT THE CENTER OF THE MAGAZINE. IT WILL BE NECESSARY THEREFORE, TO USE 2" THICK MATERIAL FOR THE FLOOR DUNNAGE UNDER THESE STACKS TO PREVENT THE BOTTOM OF THE FORKLIFT TINE POCKETS FROM CONTACTING THE FLOOR. STACK STABILIZING DUNNAGE IN THE FORM OF SHIMS WILL BE USED IF REQUIRED TO ACHIEVE SOUND AND ACCEPTABLE STABLE STACKS FROM THE FLOOR TO THE TOP OF THE STACK. SHIM MATERIAL OF VARYING THICKNESS OR THICKER FLOOR DUNNAGE WILL BE USED AS REQUIRED UNDER THE LOAD BEARING LOCATIONS AT THE ENDS OF THE FIRST-LAYER CONTAINERS. SEE THE "FLOOR DUNNAGE AND SHIM LOCATION DETAIL" ON PAGE 18 FOR A TYPICAL INSTALLATION.
- R. CONVERSION TO METRIC EQUIVALENTS: DIMENSIONS WITHIN THIS DOCUMENT ARE EXPRESSED IN INCHES, AND WEIGHTS ARE EXPRESSED IN POUNDS. WHEN NECESSARY, THE METRIC EQUIVALENT MAY BE COMPUTED ON THE BASIS OF ONE INCH EQUALS 25.4MM, AND ONE POUND EQUALS 0.454 KG.
- S. OTHER COMPATIBLE ITEMS MAY BE STORED IN A MAGAZINE, WHICH IS PARTIALLY FILLED WITH THE DESIGNATED ITEM.

(CONTINUED AT RIGHT)

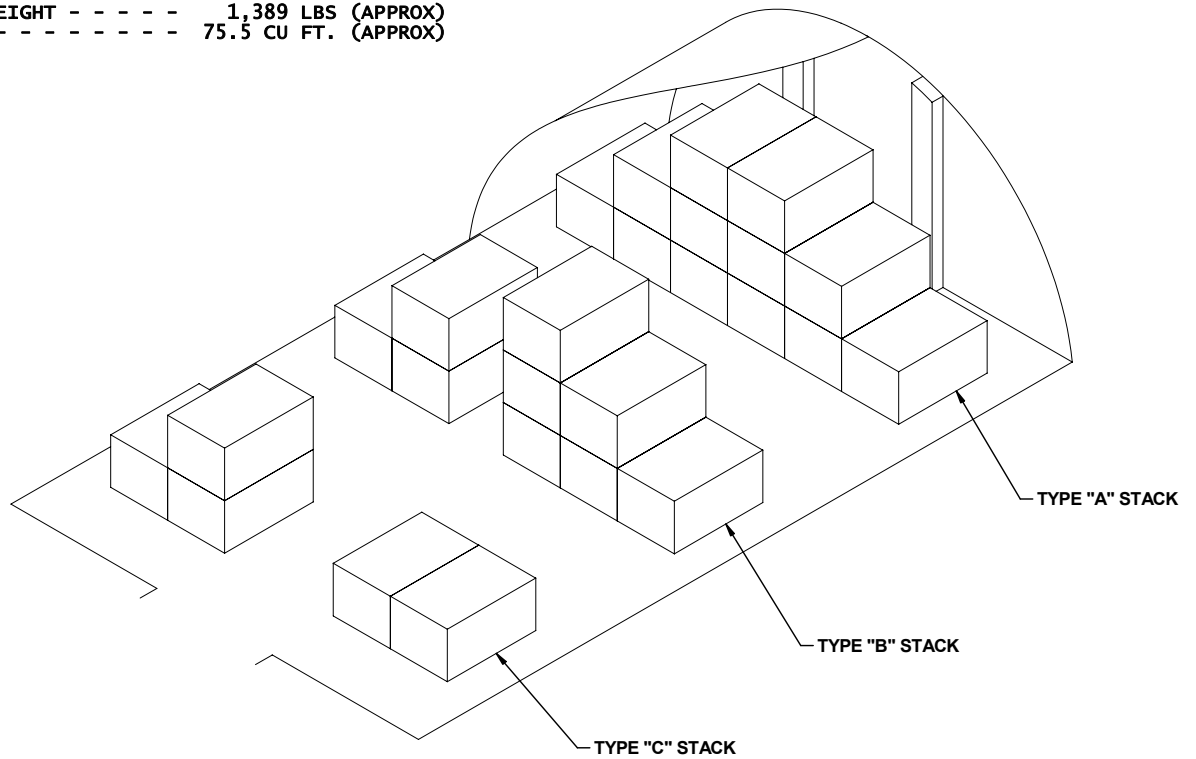
MATERIAL SPECIFICATION

LUMBER - - - - - : SEE TM 743-200-1 (DUNNAGE LUMBER) AND VOLUNTARY PRODUCT STANDARD PS 20.



CNU-609

GROSS WEIGHT - - - - - 1,389 LBS (APPROX)
 CUBE - - - - - 75.5 CU FT. (APPROX)

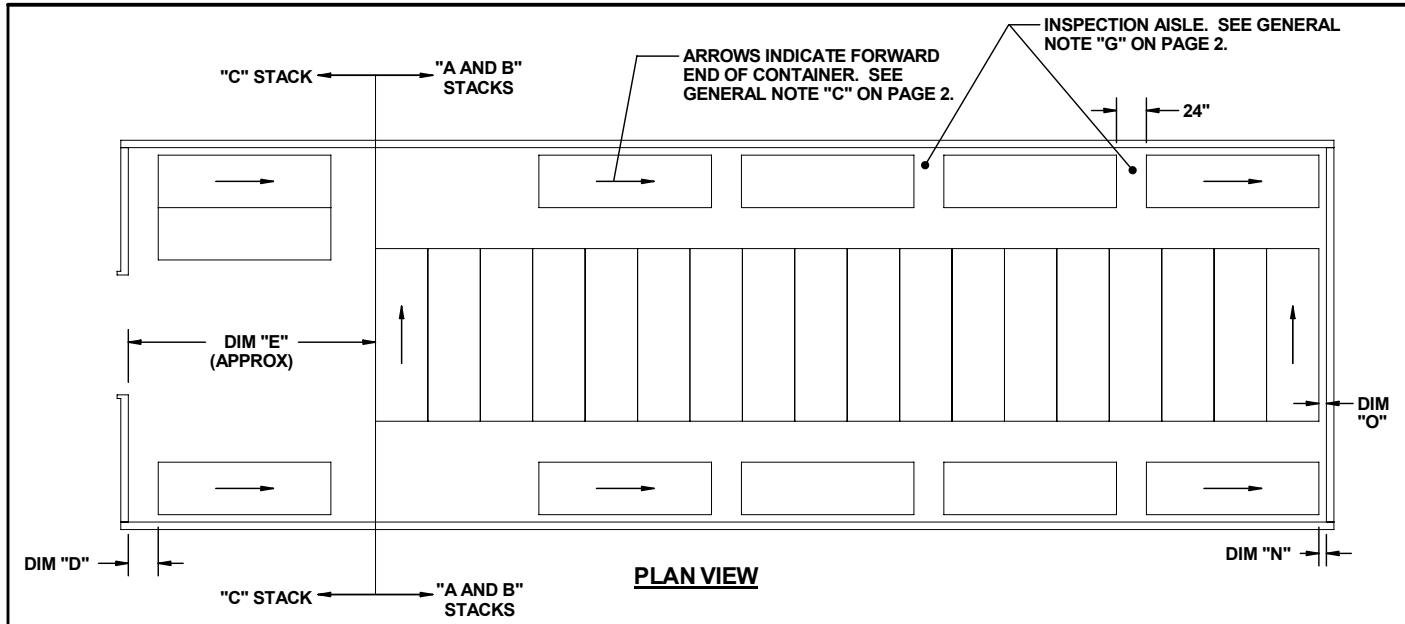


STACK IDENTIFICATION

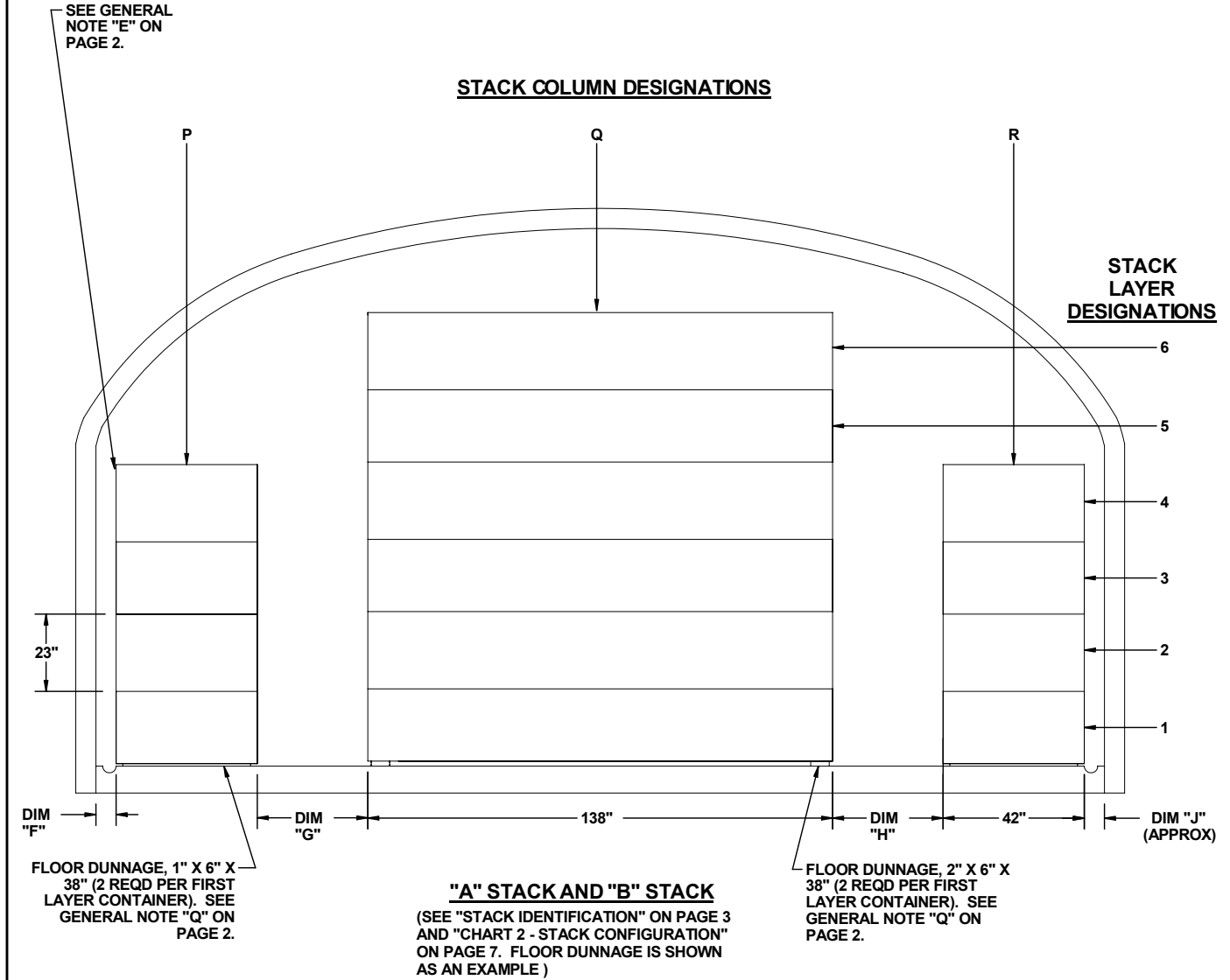
A TYPE "A" STACK IS IDENTIFIED AS A GROUP OF ITEMS /UNITS WHICH EXTENDS FULL WIDTH AND HEIGHT OF THE MAGAZINE, AND IS ONE ITEM/UNIT LONG IN THE LENGTH OF THE MAGAZINE.

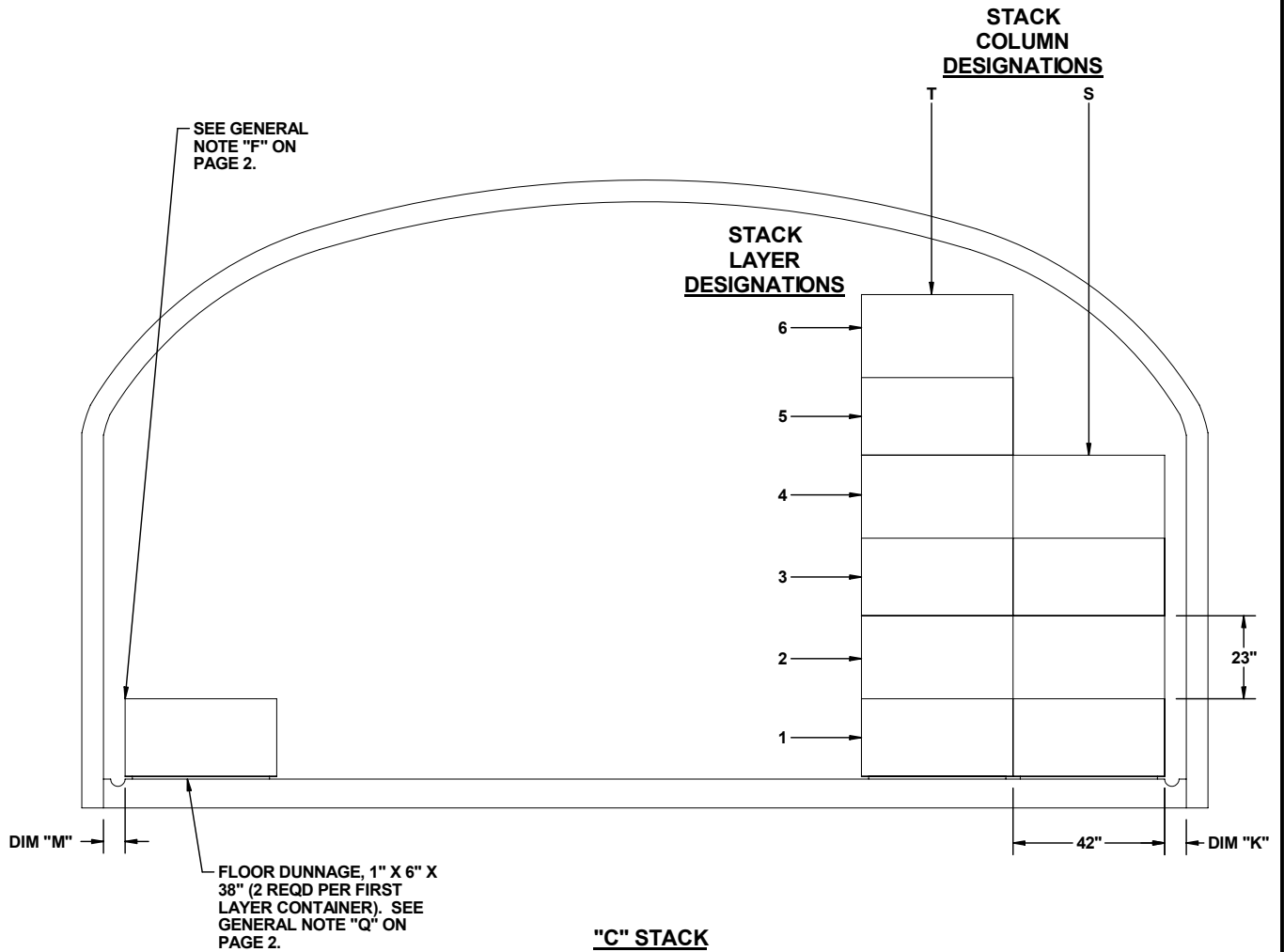
A TYPE "B" STACK IS IDENTIFIED AS A GROUP OF ITEMS/UNITS WHICH EXTEND FULL WIDTH AND HEIGHT OF THE MAGAZINE, AND IS ONE UNIT/ITEM LONG, BUT HAS AN AISLE AT OR NEAR THE CENTER OF THE WIDTH OF THE STACK.

A TYPE "C" STACK IS IDENTIFIED AS A GROUP OF ITEMS/UNITS WHICH IS ONE UNIT/ITEM LONG AND CONSISTS OF PARTIAL STACKS ON EACH SIDE OF THE MAGAZINE, USUALLY ONE ITEM/UNIT HIGH ON ONE SIDE OF THE MAGAZINE.



NOTE: FOR IDENTIFICATION OF LETTERED DIMENSIONS REFER TO CHART 1 ON PAGE 6.





"C" STACK

TYPICAL "C" STACK FOR STRADLEY MAGAZINE.
 (SEE "STACK IDENTIFICATION " ON PAGE 3 AND
 "CHART 2 - STACK CONFIGURATION" ON PAGE 7)

NOTE: FOR IDENTIFICATION OF
 LETTERED DIMENSIONS REFER
 TO CHART 1 ON PAGE 6.

SPECIAL NOTES:

1. THE FOLLOWING NOTES, CHART 1 ON PAGE 6 AND CHART 2 ON PAGE 7 ARE PRESENTED AS GUIDANCE IN THE SELECTION OF A STORAGE PATTERN, AND IN DETERMINING THE QUANTITY OF CONTAINERS WHICH CAN BE STORED IN THE STORAGE MAGAZINES LISTED IN THE CHARTS MENTIONED ABOVE.
2. CHART 1 ON PAGE 6 DESCRIBES THE STORAGE MAGAZINE GENERAL DIMENSIONS AND THE DIMENSIONS OF THE CONTAINER SPACING WITHIN THE STORAGE MAGAZINES.
3. DIMENSIONS "A", "B" AND "C" HAVE BEEN OMITTED TO AVOID CONFUSION WITH STACKS "A", "B" AND "C".
4. CHART 2 ON PAGE 7 DETAILS THE QUANTITY OF CONTAINERS IN EACH TYPE OF MAGAZINE AND THE LAYOUT OF THE STACKS FOR EACH TYPE OF MAGAZINE. THE CHART SHOWS THE NUMBER OF CONTAINERS IN EACH STACK LAYER AND THE LOCATION OF THE CONTAINER ON EACH LAYER.

(CONTINUED AT RIGHT)

EXAMPLE:

CHART 2 – "C" STACK CONFIGURATION - LEFT SIDE
 MAGAZINE: STRADLEY

- LAYER NUMBER 1: 2 (S-T)
- LAYER NUMBER 2: 2 (S-T)
- LAYER NUMBER 3: 2 (S-T)
- LAYER NUMBER 4: 2 (S-T)
- LAYER NUMBER 5: 1 (T)
- LAYER NUMBER 6: 1 (T)

EXPLANATION:

- LAYER 1 (BOTTOM LAYER) HAS TWO CONTAINERS FROM THE "S" COLUMN (NEAREST THE LEFT SIDE OF THE MAGAZINE) TO THE "T" COLUMN.
- LAYER 2 (ON TOP OF LAYER 1) HAS TWO CONTAINERS FROM THE "S" COLUMN (NEAREST THE LEFT SIDE OF THE MAGAZINE) TO THE "T" COLUMN.
- LAYER 3 (ON TOP OF LAYER 2) HAS TWO CONTAINERS FROM THE "S" COLUMN (NEAREST THE LEFT SIDE OF THE MAGAZINE) TO THE "T" COLUMN.
- LAYER 4 (ON TOP OF LAYER 3) HAS TWO CONTAINERS FROM THE "S" COLUMN

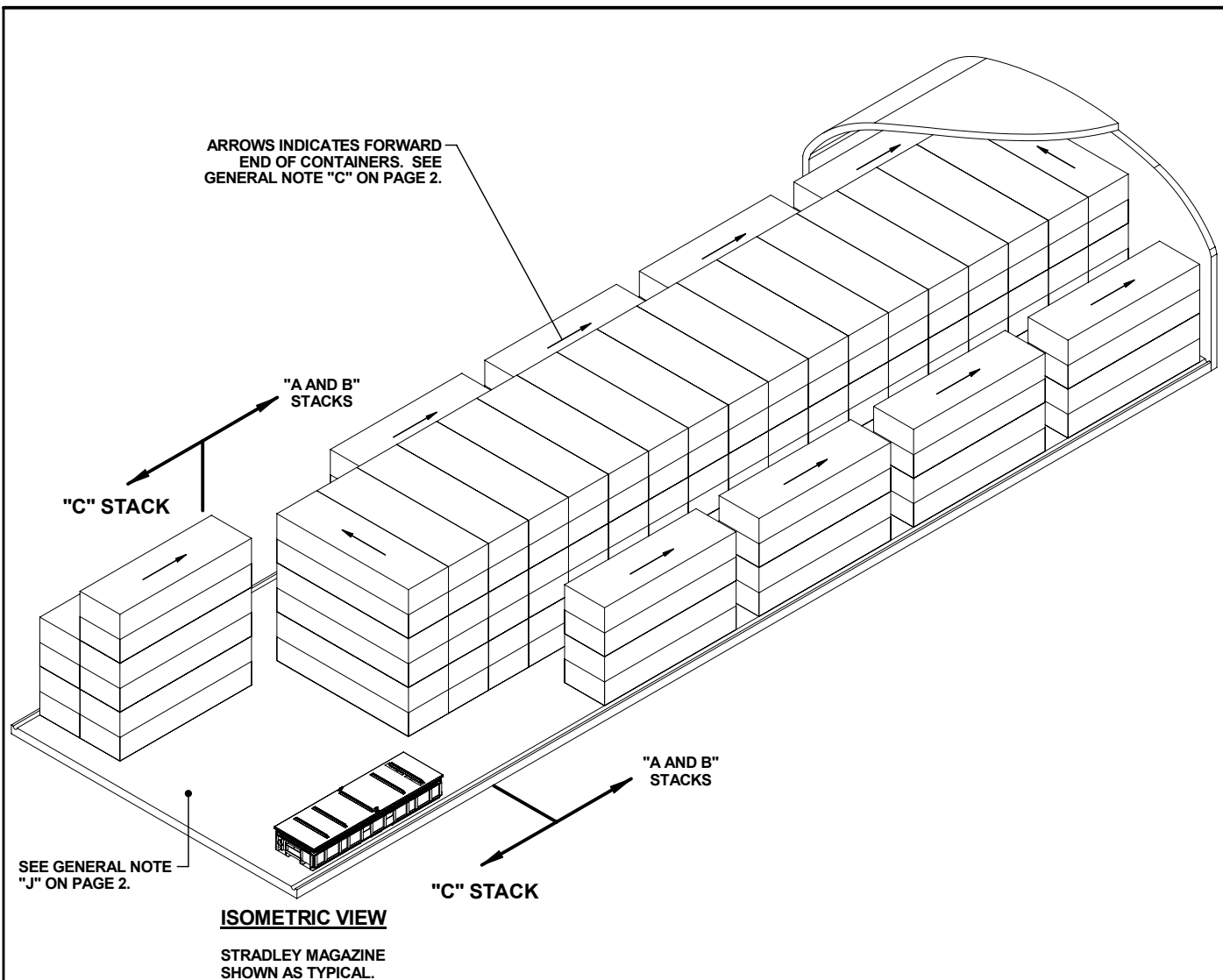


CHART 1 - DIMENSIONS

MAGAZINE DIMENSIONS	MAGAZINE TYPE													
	IGLOO			ARCH 12'		ARCH 11'		ARCH 10'		OVAL ARCH	STRADLEY	STEEL ARCH		
	26'-6"	26'-6"	26'-6"	26'-6"	25'-0"	25'-0"	25'-0"	25'-0"	25'-0"	24'-10"	25'-0"	25'-0"	24'-11"	
LENGTH	40'-4"	60'-8"	81'-0"	81'-2"	40'-0"	80'-0"	40'-0"	80'-0"	40'-0"	80'-0"	89'-0"	80'-0"	59'-0"	89'-0"
WIDTH	26'-6"	26'-6"	26'-6"	26'-6"	25'-0"	25'-0"	25'-0"	25'-0"	25'-0"	24'-10"	25'-0"	25'-0"	25'-0"	24'-11"
HEIGHT	12'-9"	12'-9"	12'-9"	12'-9"	12'-1-3/4"	12'-1-3/4"	11'-0"	11'-0"	10'-0"	14'-5"	14'-0"	14'-0"	14'-0"	13'-6"
DIMENSIONS	CONTAINER SPACING DIMENSIONS													
DIM "D" ("C" STACK FRONT)	24"	24"	24"	24"	24"	24"	24"	24"	24"	24"	24"	24"	24"	24"
DIM "E" (M HE AISLE APPROX)	15'-2"	14'-9"	14'-3"	16'-3"	14'-5"	15'-11"	14'-5"	15'-10"	15'-0"	16'-6"	15'-1"	16'-6"	16'-6"	15'-3"
DIM "F" ("B" STACK LEFT)	47"	47"	47"	7'-6"	38"	38"	32"	19"	19"	19"	38"	6"	21"	21"
DIM "G" ("A TO B" LEFT)	1"	1"	1"	1"	1"	1"	1"	1"	1"	1"	1"	33"	12"	3"
DIM "H" ("A TO B" RIGHT)	35"	35"	35"	30"	26"	26"	24"	36"	24"	24"	33"	33"	24"	31"
DIM "J" ("B" STACK RIGHT)	12"	12"	12"	13"	13"	13"	19"	20"	20"	20"	6"	6"	21"	21"
DIM "K" ("C" STACK LEFT)	48"	48"	48"	7'-6"	38"	38"	20"	19"	19"	19"	38"	6"	21"	21"
DIM "L" (M HE AREA APPROX)	10'-11"	10'-11"	10'-11"	10'-7"	10'-3"	10'-3"	11'-1"	11'-1"	10'-1"	10'-1"	10'-10"	13'-6"	11'-0"	10'-10"
DIM "M" ("C" STACK RIGHT)	12"	12"	12"	13"	13"	13"	19"	20"	20"	20"	6"	6"	21"	21"
DIM "N" ("B" STACK BACK)	6"	6"	6"	6"	6"	6"	6"	6"	6"	6"	6"	6"	6"	6"
DIM "O" ("A" STACK BACK)	6"	6"	6"	14"	14"	14"	14"	14"	6"	6"	6"	6"	6"	6"

CHART 2 - STACK CONFIGURATION

MAGAZINE TYPE														
QUANTITY PER MAGAZINE	IGLOO			ARCH 12'	ARCH 12' X 25' W		ARCH 11'		ARCH 10'		OVAL ARCH	STRADLEY	STEEL ARCH	
	40'-4" L	60'-8" L	81'-0" L	26'-6" W	40'-0" L	80'-0" L	40'-0" L	80'-0" L	40'-0" L	80'-0" L			59'-0" L	89'-0" L
	59	107	143	105	43	105	39	95	39	95	189	159	107	177
"A" STACK CONFIGURATION														
LAYER	CONTAINERS PER LAYER													
1	1(Q)			1(Q)	1(Q)		1(Q)		1(Q)		1(Q)	1(Q)	1(Q)	
2	1(Q)			1(Q)	1(Q)		1(Q)		1(Q)		1(Q)	1(Q)	1(Q)	
3	1(Q)			1(Q)	1(Q)		1(Q)		1(Q)		1(Q)	1(Q)	1(Q)	
4	1(Q)			1(Q)	1(Q)		1(Q)		1(Q)		1(Q)	1(Q)	1(Q)	
5	1(Q)			0	0		0		0		1(Q)	1(Q)	1(Q)	
6	1(Q)			0	0		0		0		1(Q)	1(Q)	1(Q)	
SINGLE STACK TOTAL	6			4	4		4		4		6	6	6	
NUMBER OF STACKS	7	13	18	18	7	18	7	18	7	18	21	18	12	21
"A" STACK TOTAL	42	78	108	72	28	72	28	72	28	72	126	108	72	126
"B" STACK CONFIGURATION-LEFT SIDE														
LAYER	CONTAINERS PER LAYER													
1	1(P)			1(P)	1(P)		1(P)		1(P)		1(P)	1(P)	1(P)	
2	1(P)			1(P)	1(P)		1(P)		1(P)		1(P)	1(P)	1(P)	
3	1(P)			1(P)	1(P)		0		0		1(P)	1(P)	1(P)	
4	1(P)			1(P)	1(P)		0		0		1(P)	1(P)	1(P)	
5	0			0	0		0		0		1(P)	1(P)	0	
6	0			0	0		0		0		1(P)	1(P)	0	
SINGLE STACK TOTAL	4			4	4		2		2		6	6	4	
NUMBER OF STACKS	1	3	4	4	1	4	1	4	1	4	5	4	3	5
"B" STACK TOTAL	4	12	16	16	4	16	2	8	2	8	30	24	12	20
"B" STACK CONFIGURATION-RIGHT SIDE														
LAYER	CONTAINERS PER LAYER													
1	1(R)			1(R)	1(R)		1(R)		1(R)		1(R)	1(R)	1(R)	
2	1(R)			1(R)	1(R)		1(R)		1(R)		1(R)	1(R)	1(R)	
3	0			0	0		0		0		1(R)	1(R)	1(R)	
4	0			0	0		0		0		1(R)	1(R)	1(R)	
5	0			0	0		0		0		0	0	0	
6	0			0	0		0		0		0	0	0	
SINGLE STACK TOTAL	2			2	2		2		2		4	4	4	
NUMBER OF STACKS	1	3	4	4	1	4	1	4	1	4	5	4	3	5
"B" STACK TOTAL	2	6	8	8	2	8	2	8	2	8	20	16	12	20
"C" STACK CONFIGURATION - LEFT SIDE														
LAYER	CONTAINERS PER LAYER													
1	2(S-T)			2(S-T)		2(S-T)		2(S-T)		2(2-T)	2(S-T)	2(S-T)		
2	2(S-T)			2(S-T)		2(S-T)		2(S-T)		2(2-T)	2(S-T)	2(S-T)		
3	2(S-T)			2(S-T)		1(T)		1(T)		2(2-T)	2(S-T)	2(S-T)		
4	2(S-T)			2(S-T)		1(T)		1(T)		2(S-T)	2(S-T)	2(S-T)		
5	1(T)			0		0		0		2(S-T)	1(T)	1(T)		
6	1(T)			0		0		0		2(2-T)	1(T)	1(T)		
SINGLE STACK TOTAL	10			8		6		6		12	10	10		
NUMBER OF STACKS	1			1		1		1		1	1	1		
"C" STACK LF TOTAL	10			8		6		6		12	10	10		
"C" STACK CONFIGURATION - RIGHT SIDE														
"C" STACK RT TOTAL	1			1		1		1		1	1	1		

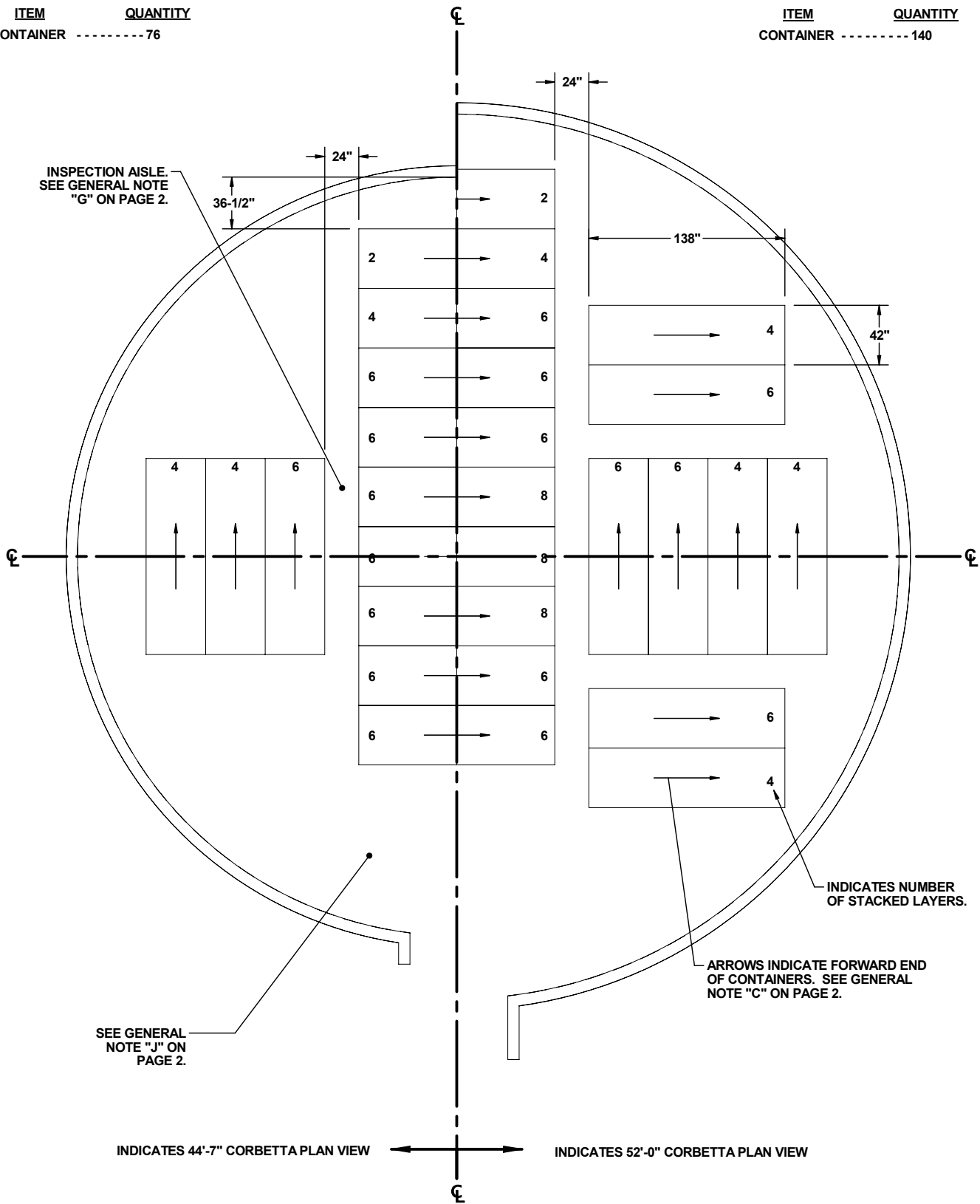
NOTE: REFER TO THE SPECIAL NOTES ON THE BOTTOM OF PAGE 5.

STORAGE IN 44'-7" MAGAZINE

STORAGE IN 52'-0" MAGAZINE

ITEM QUANTITY
CONTAINER ----- 76

ITEM QUANTITY
CONTAINER ----- 140



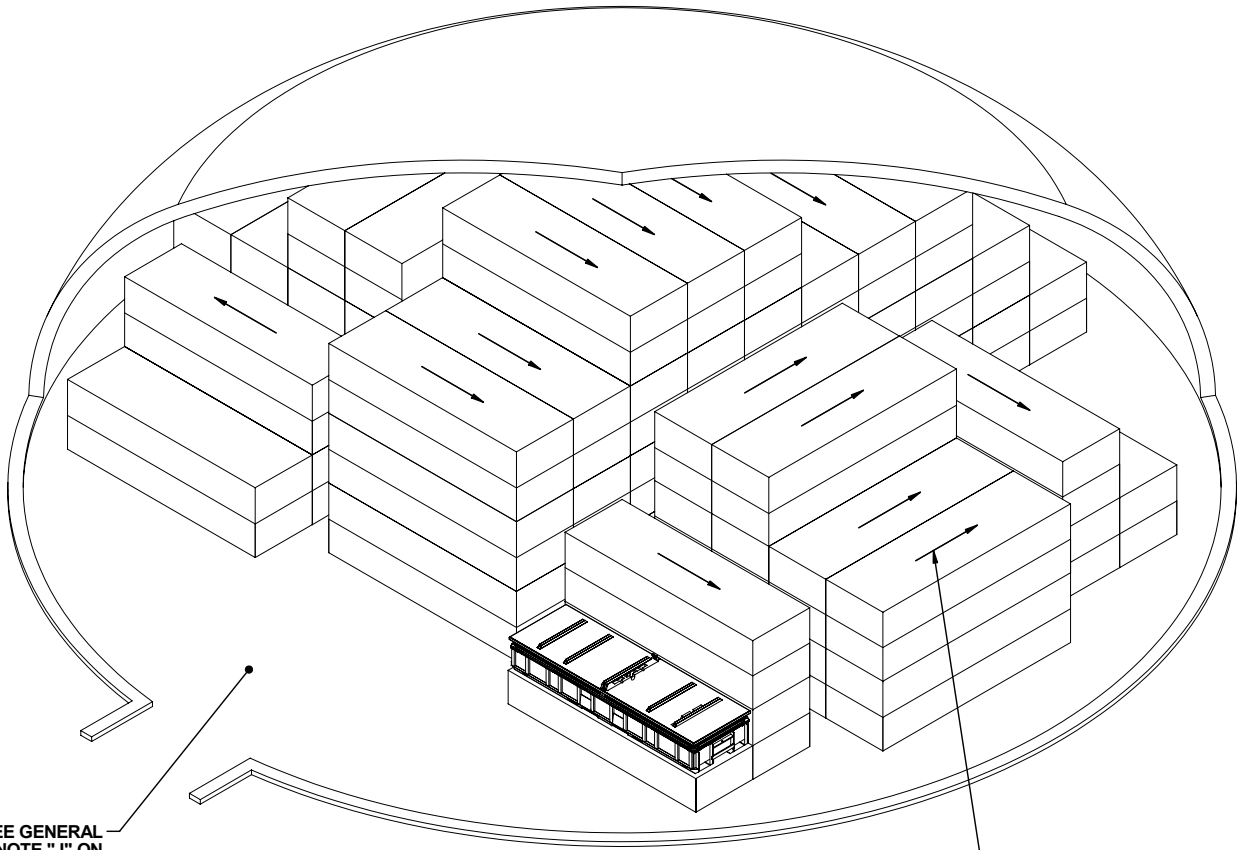
SEE GENERAL NOTE "J" ON PAGE 2.

INDICATES 44'-7" CORBETTA PLAN VIEW

INDICATES 52'-0" CORBETTA PLAN VIEW

PLAN VIEW

THE RIGHT HAND PLAN VIEW INDICATES A 52'-0" CORBETTA MAGAZINE, AND THE LEFT HAND PLAN VIEW INDICATES A 44'-7" CORBETTA MAGAZINE. BOTH SIZE MAGAZINE LAYOUTS ARE SYMMETRICAL AROUND THE VERTICAL CENTER LINE.



SEE GENERAL
NOTE "J" ON
PAGE 2.

ARROWS INDICATE FORWARD
END OF CONTAINERS. SEE
GENERAL NOTE "C" ON PAGE 2.

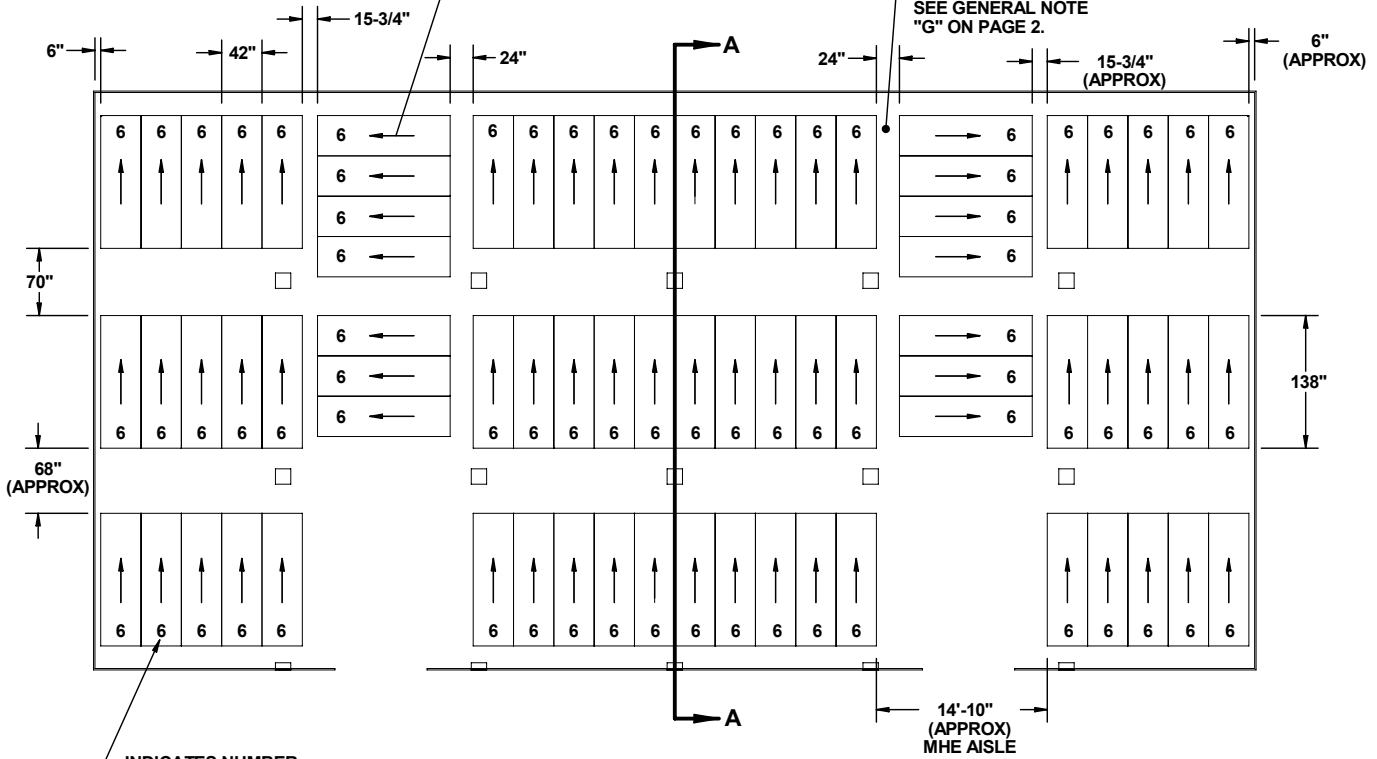
ISOMETRIC VIEW
(52' - 0" DIA MAGAZINE)

**STORAGE IN RECTANGULAR
MAGAZINE**

ITEM QUANTITY
CONTAINER ----- 444

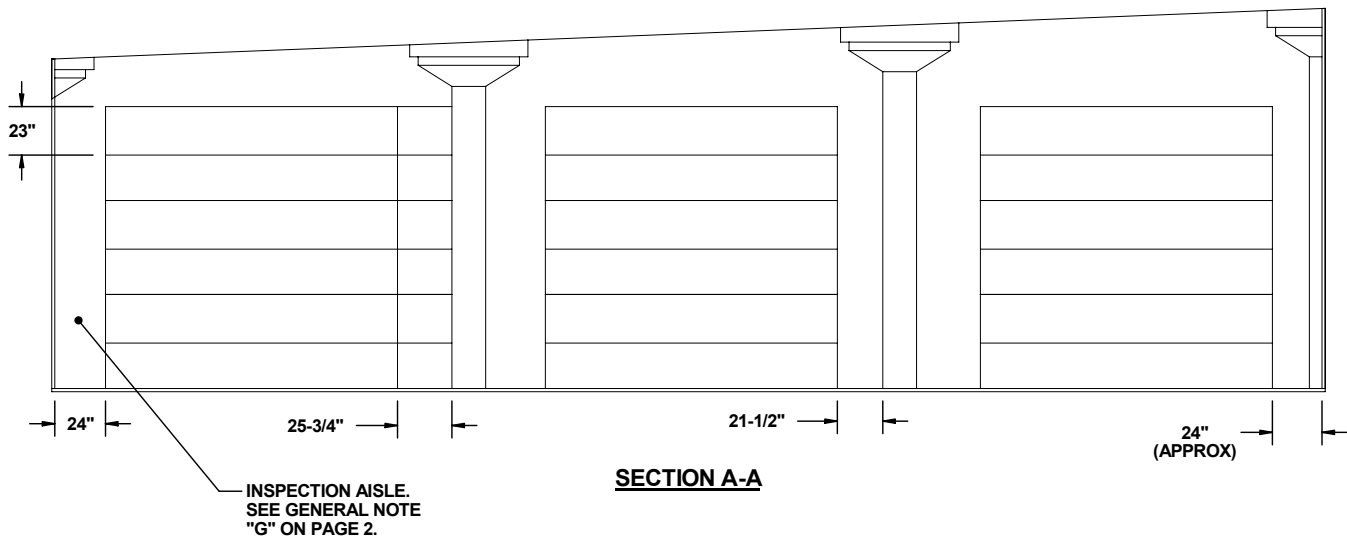
ARROWS INDICATE FORWARD
END OF CONTAINERS. SEE
GENERAL NOTE "C" ON PAGE 2.

INSPECTION AISLE.
SEE GENERAL NOTE
"G" ON PAGE 2.

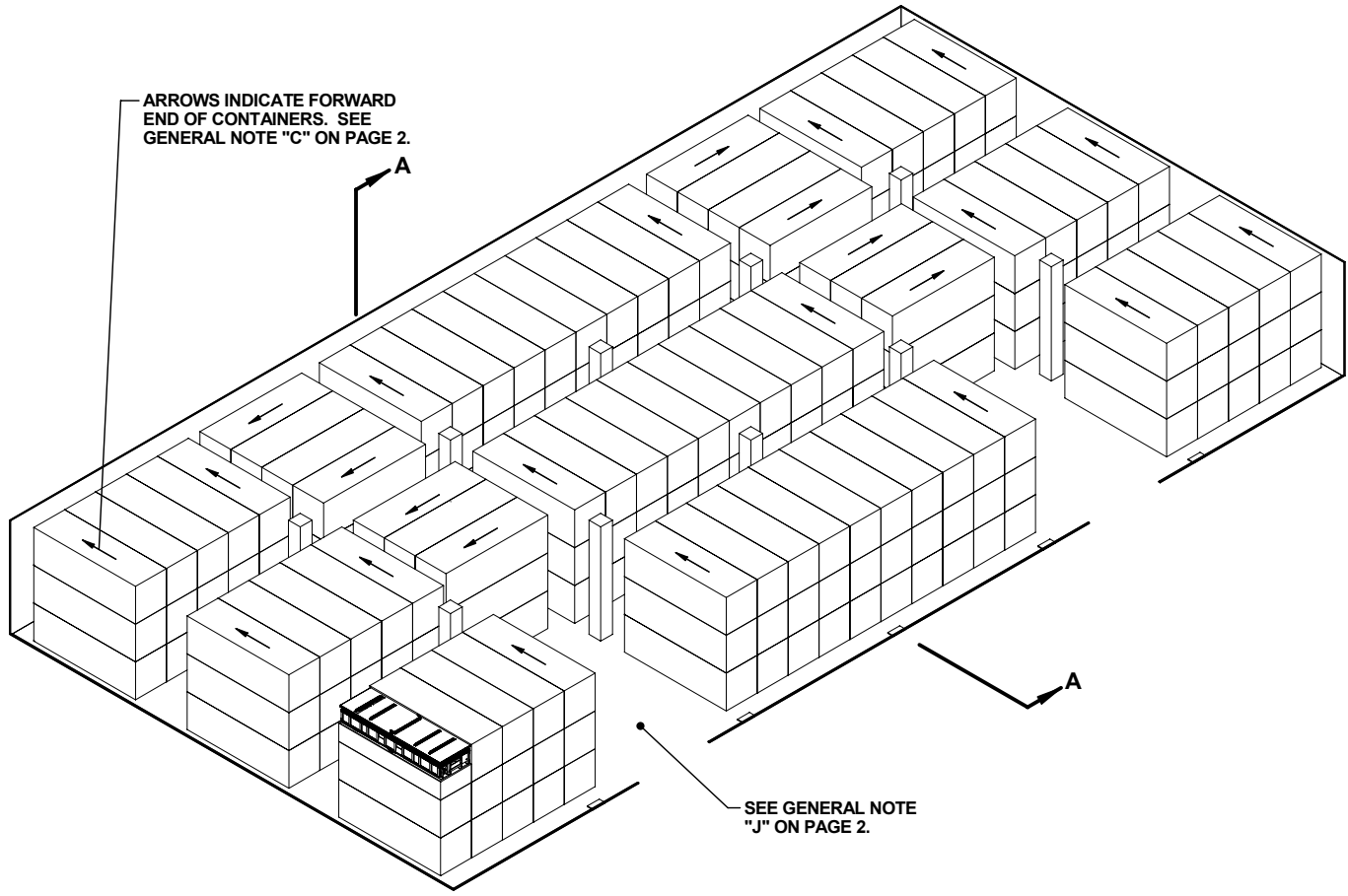


INDICATES NUMBER
OF STACKED LAYERS.

PLAN VIEW



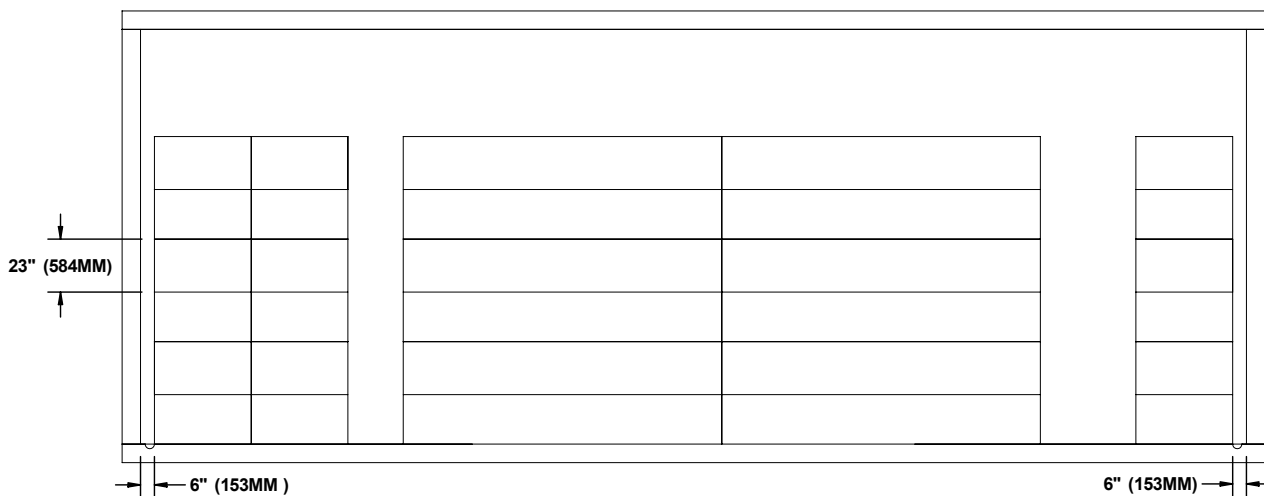
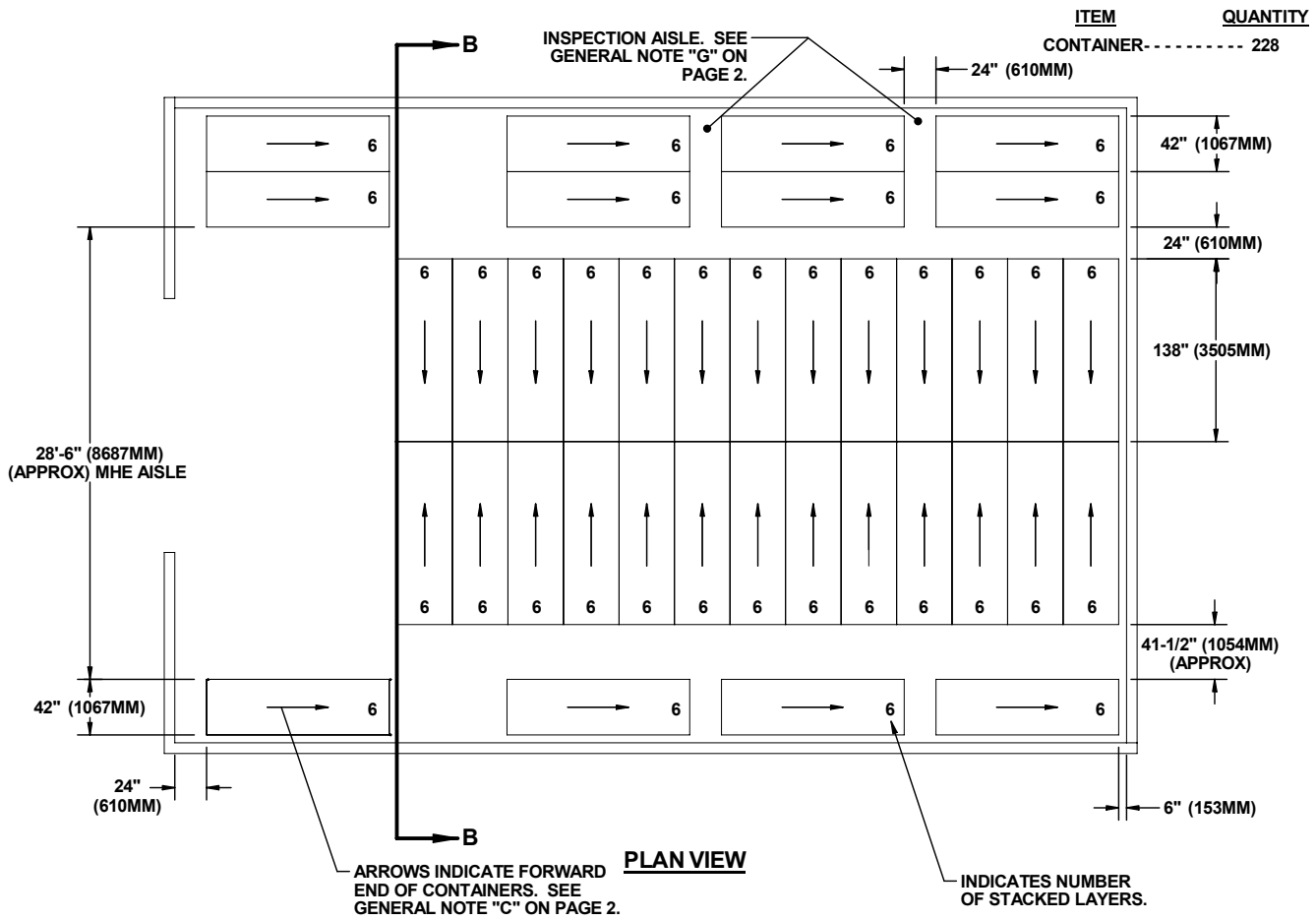
SECTION A-A



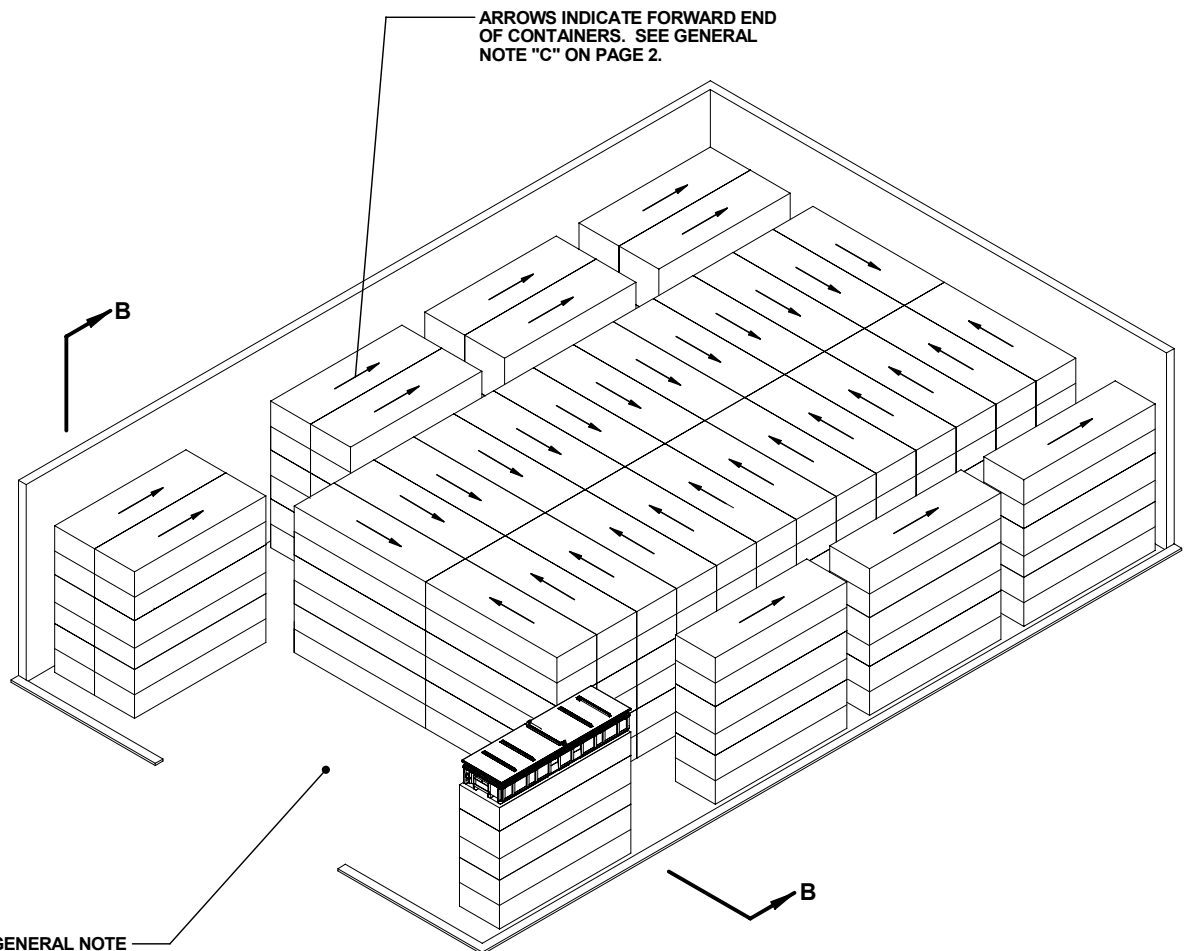
ISOMETRIC VIEW

(50'-0" MAGAZINE)

**STORAGE IN TYPE II BUNKER
MAGAZINE**



SECTION B-B



ISOMETRIC VIEW
(TYPE II BUNKER MAGAZINE)

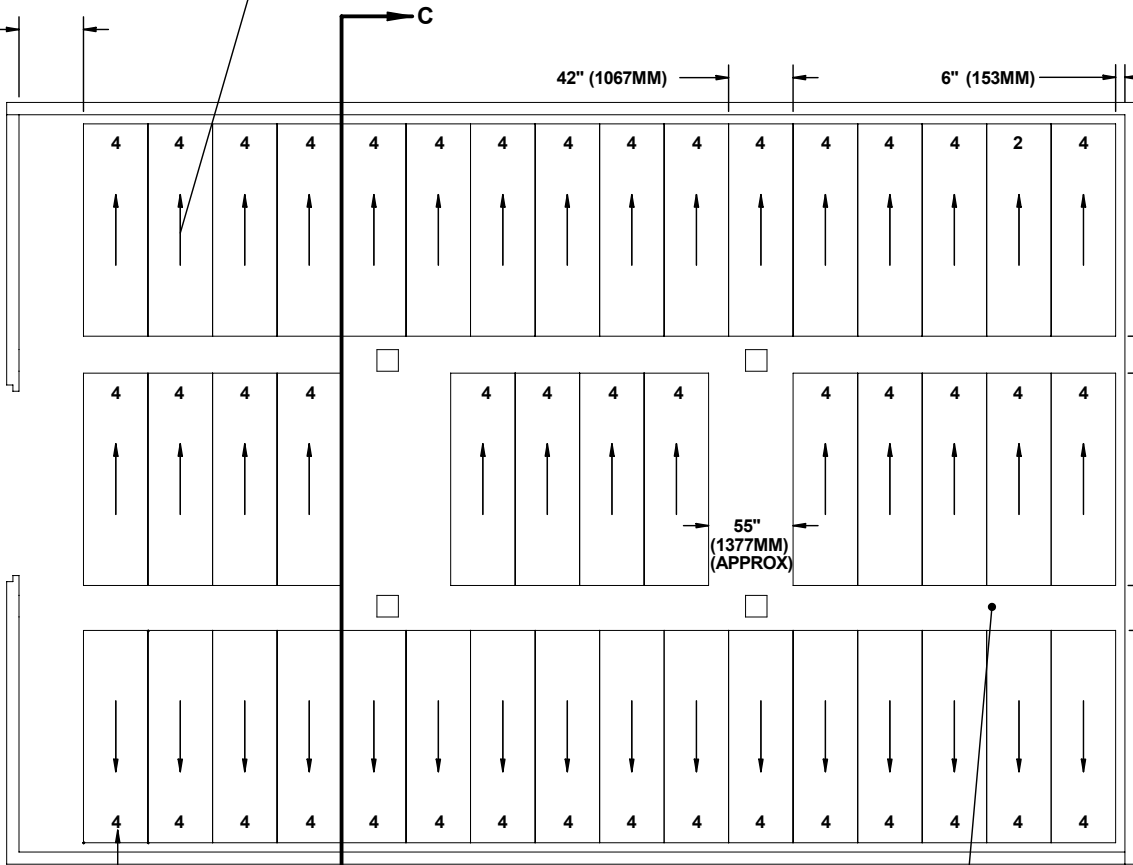
60'-0" L X 40'-0" W X 15'-0" H TYPE II BUNKER MAGAZINE

**STORAGE IN TYPE III BUNKER
MAGAZINE**

ITEM	QUANTITY
CONTAINER - - - - -	180

ARROWS INDICATE FORWARD END
OF CONTAINERS. SEE GENERAL
NOTE "C" ON PAGE 2.

42" (1067MM)
(APPROX)



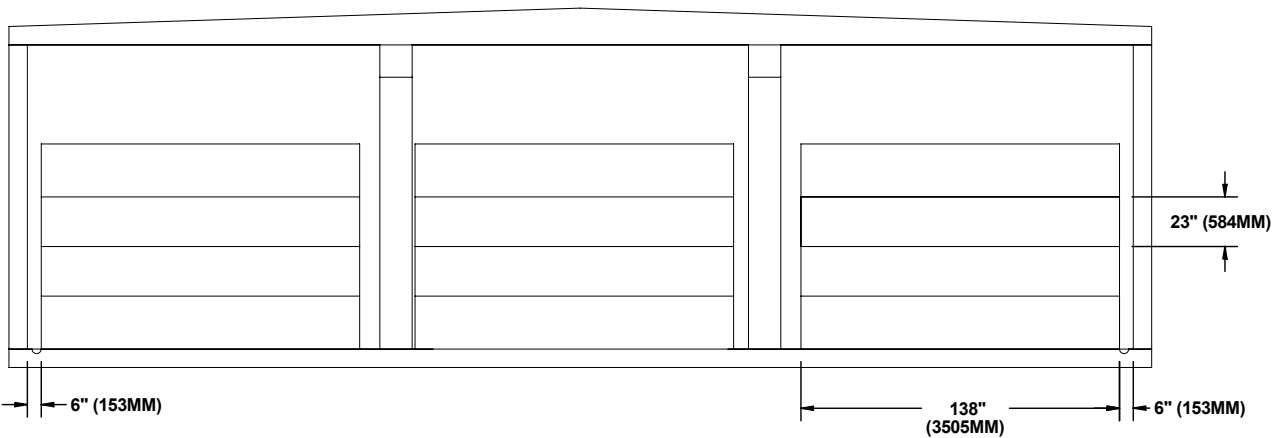
24" (610MM)

29-1/4"
(APPROX)
(743MM)

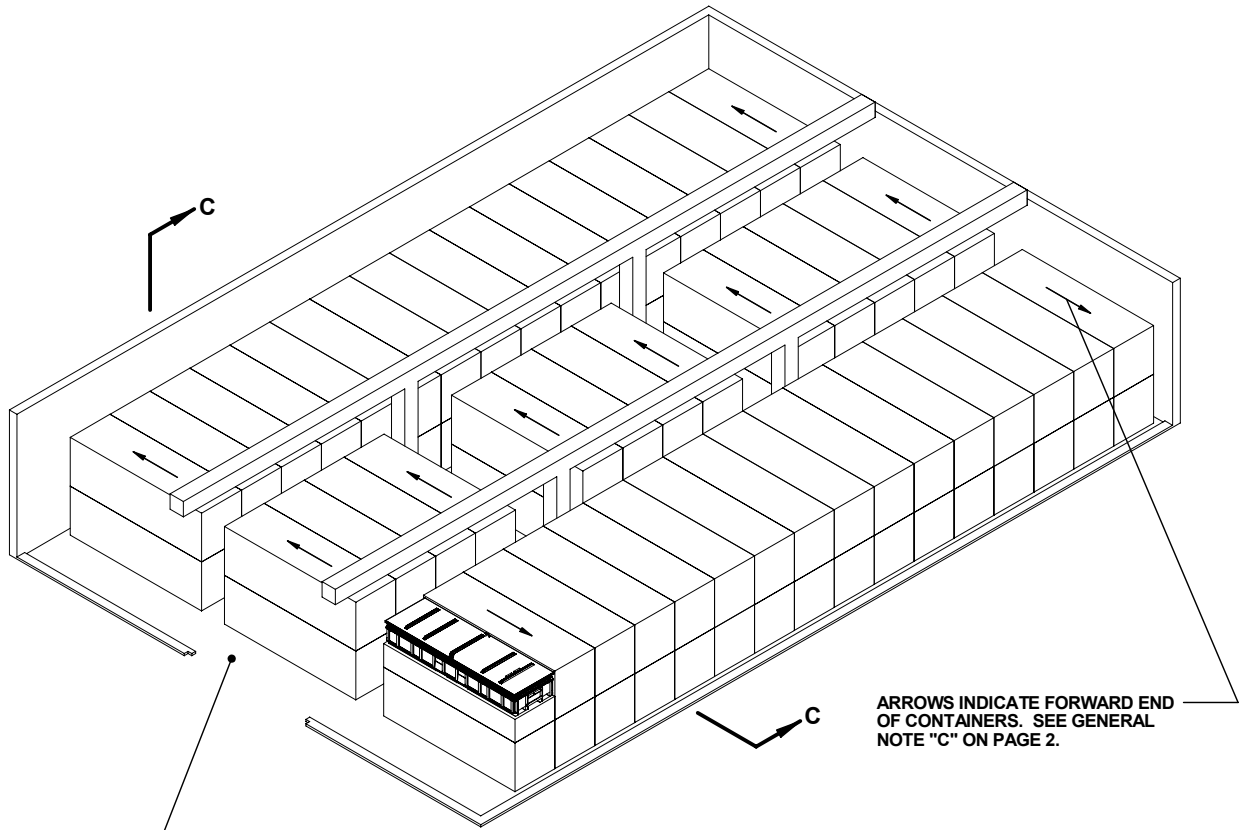
INDICATES NUMBER
OF STACKED LAYERS.

PLAN VIEW

INSPECTION AISLE. SEE
GENERAL NOTE "G" ON
PAGE 2.



SECTION C-C



SEE GENERAL NOTE
"J" ON PAGE 2.

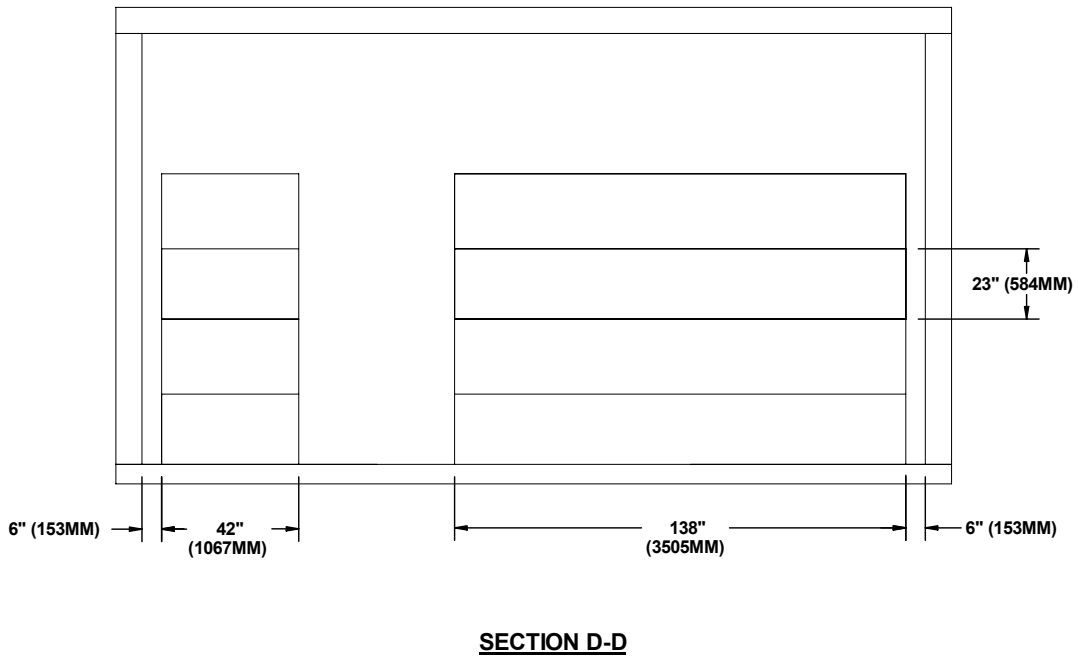
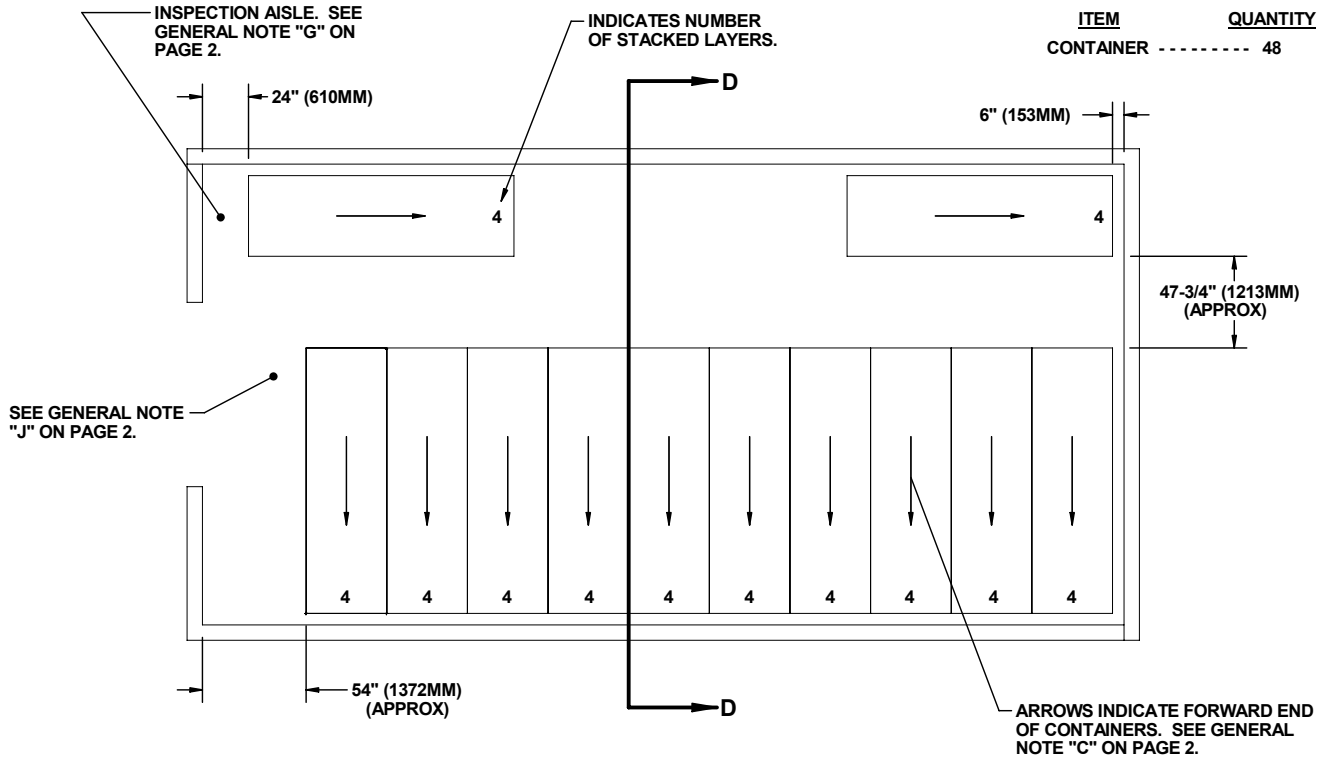
ARROWS INDICATE FORWARD END
OF CONTAINERS. SEE GENERAL
NOTE "C" ON PAGE 2.

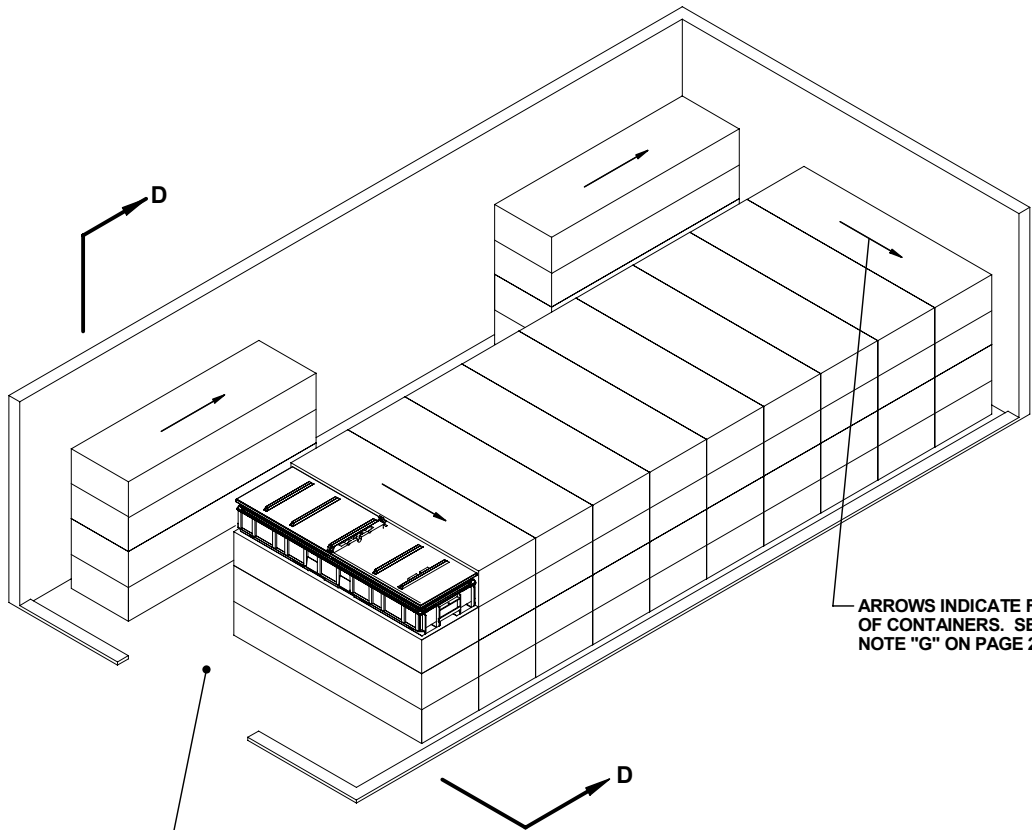
ISOMETRIC VIEW
(TYPE III BUNKER MAGAZINE)

60'-0" L X 40'-0" W X 11'-0" H TYPE III BUNKER MAGAZINE

**STORAGE IN TYPE IV BUNKER
MAGAZINE**

ITEM	QUANTITY
CONTAINER	48

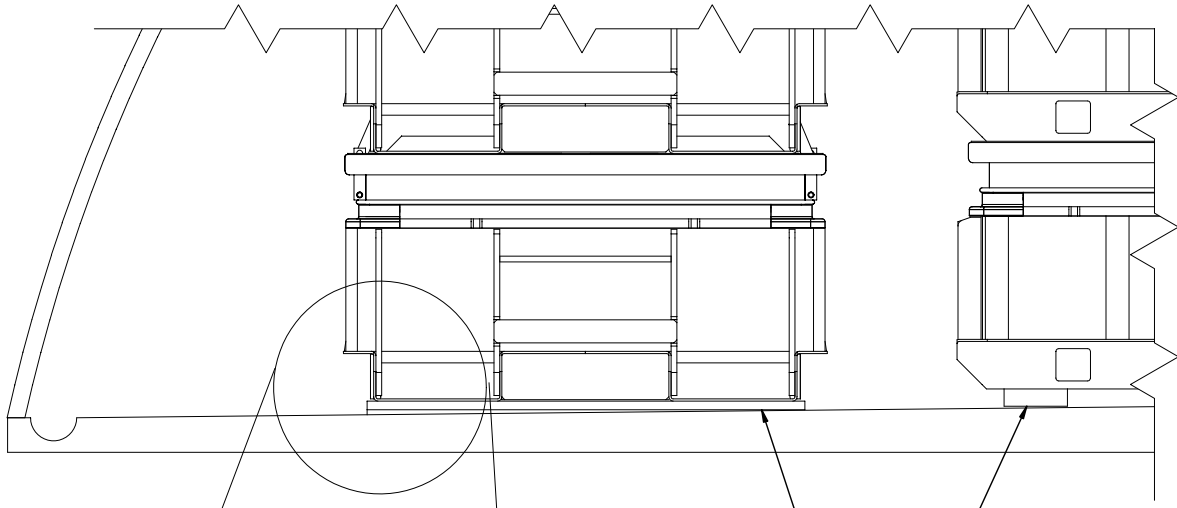




ARROWS INDICATE FORWARD END OF CONTAINERS. SEE GENERAL NOTE "G" ON PAGE 2.

SEE GENERAL NOTE "J" ON PAGE 2.

ISOMETRIC VIEW
(TYPE IV BUNKER MAGAZINE)

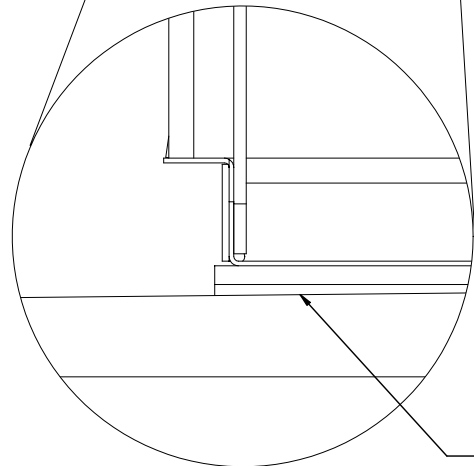


FLOOR DUNNAGE, 1" X 6" X 38" (2 REQD PER FIRST LAYER CONTAINER). SEE GENERAL NOTE "Q" ON PAGE 2.

FLOOR DUNNAGE, 2" X 6" X 38" (2 REQD PER FIRST LAYER CONTAINER). SEE GENERAL NOTE "Q" ON PAGE 2.

TYPICAL FLOOR DUNNAGE AND SHIM LOCATION DETAIL

SEE GENERAL NOTE "Q" ON PAGE 2.



SHIM (AS REQD TO PROVIDE A LEVEL BEARING SURFACE FOR THE FIRST LAYER CONTAINERS). POSITION UNDER CONTAINER SKIDS. SEE GENERAL NOTE "Q" ON PAGE 2.