

STORAGE IN APPROVED MAGAZINES OF JOINT DIRECT ATTACK MUNITION (JDAM) PACKED 2 PER CNU-589 SHIPPING AND STORAGE CONTAINER

<u>ITEM</u>	<u>INDEX</u>	<u>PAGE(S)</u>
GENERAL NOTES AND MATERIAL SPECIFICATIONS	- - - - -	2
CONTAINER DETAILS	- - - - -	3
TYPICAL STORAGE IN ARCHED OR ROUNDED ROOF MAGAZINES	- - - - -	4-7
CORBETTA MAGAZINE	- - - - -	8,9
100'-8" L X 50'-0" W RECTANGULAR MAGAZINE	- - - - -	10,11
217'-4" L X 50'-3" W STANDARD ABOVE GROUND MAGAZINE	- - - - -	12,13
TYPICAL MULTIPLE-LOT STORAGE PROCEDURES	- - - - -	14-16

U.S. ARMY MATERIEL COMMAND DRAWING

APPROVED, U.S. ARMY FIELD SUPPORT COMMAND <i>DF</i>		CAUTION: VERIFY PRIOR TO USE AT WWW.DAC.ARMY.MIL THAT THIS IS THE MOST CURRENT VERSION OF THIS DOCUMENT. THIS IS PAGE 1 OF 16.			
<i>David A. Reskovich</i> AMSRD-AAR-AIL-TP		DO NOT SCALE		JUNE 2005	
		ENGINEER OR TECHNICIAN	BASIC REV.	ADIN FELICIANO	
APPROVED BY ORDER OF COMMANDING GENERAL, U.S. ARMY MATERIEL COMMAND		TRANSPORTATION ENGINEERING DIVISION	<i>G. L. Willis</i>		
<i>Larry Nostensen</i> <i>F/ James Q. Wheeler</i> U.S. ARMY DEFENSE AMMUNITION CENTER		VALIDATION ENGINEERING DIVISION	TESTED	CLASS	DIVISION
		ENGINEERING DIRECTORATE		19	48
				DRAWING	FILE
				8791	SP1-3-4-14- 22-K2

GENERAL NOTES

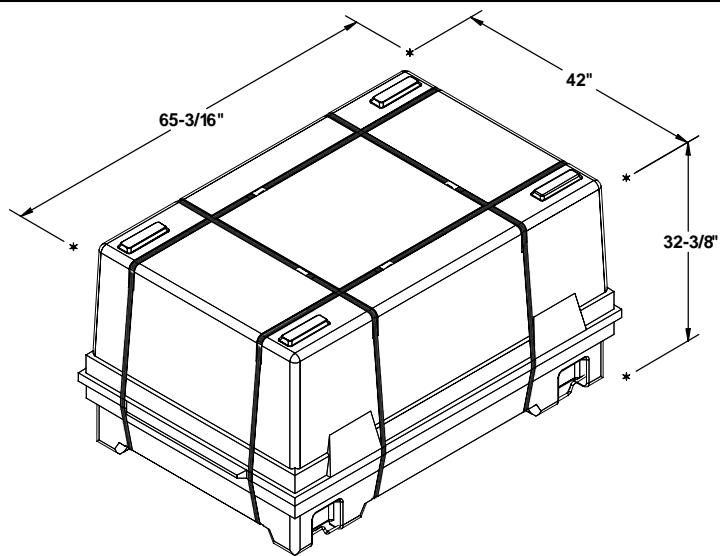
(GENERAL NOTES CONTINUED)

- A. THIS DOCUMENT HAS BEEN PREPARED AND ISSUED IN ACCORDANCE WITH AR 740-1 AND AUGMENTS TM 743-200-1 (CHAPTER 5).
- B. THE STORAGE PROCEDURES DEPICTED WITHIN THIS DOCUMENT ARE APPLICABLE FOR STORAGE IN VARIOUS TYPES AND SIZES OF MAGAZINES. THE STORAGE PROCEDURES DEPICTED FOR THE SPECIFIC TYPES OF MAGAZINES MAY ALSO BE UTILIZED TO STORE JOINT DIRECT ATTACK MUNITION (JDAM) GUIDANCE KIT UNITS IN OTHER TYPES OF APPROVED MAGAZINES. MINOR ADJUSTMENTS MAY BE MADE TO FACILITATE STORAGE IN OTHER TYPES OF MAGAZINES, HOWEVER, THE BASIC PRINCIPLES AS DEPICTED HEREIN WILL BE FOLLOWED.
- C. THE STORAGE PROCEDURES SPECIFIED HEREIN ARE APPLICABLE FOR THE JOINT DIRECT ATTACK MUNITION (JDAM) GUIDANCE KITS, PACKED 2 PER CNU-589 SHIPPING AND STORAGE CONTAINER. SUBSEQUENT REFERENCE TO A CONTAINER MEANS THE CONTAINER WITH MUNITION INSIDE.
- D. FOR CONTAINER DETAILS REFER TO PLASTIC RESEARCH CORPORATION DRAWING 103060-101 AND PICTORIAL VIEW ON PAGE 3.
- E. STORED CONTAINERS MUST NOT CONTACT THE SIDES OF A MAGAZINE. THEREFORE, UNITS MUST BE STORED A MINIMUM OF 6" FROM THE SIDEWALL OR CURVATURE OF THE MAGAZINE AS APPLICABLE. TO PROVIDE FOR THIS MANDATORY CLEARANCE REQUIREMENT, UNITS MAY BE ELIMINATED FROM THE DEPICTED STORAGE PATTERN AS NECESSARY.
- F. AISLE DIMENSION SHOWN FOR STORAGE PROCEDURES IN MAGAZINES MAY BE ADJUSTED TO SUIT LOCAL CONDITIONS, VARIATIONS IN CONTAINER DIMENSIONS, AND/OR AVAILABLE MATERIALS HANDLING EQUIPMENT.
- G. THE MAXIMUM FLOOR LOAD FOR A MAGAZINE AS PRESCRIBED WILL NOT BE EXCEEDED.
- H. IF AVAILABLE MHE PERMITS, ADDITIONAL CONTAINERS MAY BE STORED WITHIN THE MHE AREA AND/OR OTHER AVAILABLE AREA OF THE MAGAZINE.
- J. THE HEIGHT OF THE PACKAGE GUARD ON SOME FORKLIFT TRUCKS MAY NOT PERMIT PLACEMENT OF SOME TOP LAYER CONTAINERS IN THE STACKS SHOWN IN THE STORAGE VIEWS HEREIN, UNLESS TWO UPPER CONTAINERS ARE HANDLED AS ONE LIFT OR THE PACKAGE GUARD IS REMOVED (TINE CARRIAGE WILL IN MOST INSTANCES PROVIDE ADEQUATE PACKAGE GUARD PROTECTION). ONLY A FORKLIFT TRUCK OF ADEQUATE CAPACITY WILL BE USED WHEN LIFTING TWO PALLET UNITS AS ONE LIFT.
- K. THE USE OF "FLOOR DUNNAGE" IS OPTIONAL, ALTHOUGH THE USE OF THIS TYPE OF DUNNAGE IS DELINIATED WITHIN THIS STORAGE PROCEDURE DRAWING. THE PURPOSE OF FLOOR DUNNAGE IS TO KEEP THE BOTTOM OF A CONTAINER DRY, THUS AIDING IN PREVENTING DETERIORATION. THEREFORE, FLOOR DUNNAGE SHOULD BE USED WHEN STORING IN A MAGAZINE THAT IS KNOWN TO HAVE A "DAMP" FLOOR. ALSO, IN LIEU OF USING ONE-INCH THICK FLOOR DUNNAGE AS SPECIFIED, THE USE OF THICKER FLOOR DUNNAGE MAY BE REQUIRED, AND SHOULD BE USED, TO ACHIEVE THE DESIRED OBJECTIVE. NOTE: SOME VIEWS WITHIN THIS DRAWING WILL NOT DEPICT THE FLOOR DUNNAGE THAT IS REQUIRED WHEN DUNNAGE IS USED. FLOOR DUNNAGE IS SHOWN AT SOME LOCATIONS TO PROVIDE POSITIONING GUIDANCE. SEE GENERAL NOTE "S" AT RIGHT.
- L. DUNNAGE LUMBER SPECIFIED THROUGHOUT THIS PROCEDURAL DRAWING IS OF NOMINAL SIZE. FOR EXAMPLE, 1" X 6" MATERIAL IS ACTUALLY 3/4" THICK BY 5-1/2" WIDE.
- M. STORAGE OF MULTIPLE LOTS IN A MAGAZINE WILL REQUIRE CAREFUL PRE-PLANNING SO AS TO INSURE MHE ACCESSIBILITY TO ANY LOT IN ACCORDANCE WITH REQUIREMENTS SET FORTH IN THE APPLICABLE "SPECIAL NOTES" SECTIONS OF THE MULTIPLE LOT STORAGE PROCEDURES SHOWN ON PAGES 14 THRU 16.
- N. ALTHOUGH SPECIFIC PROCEDURES ARE INCLUDED IN THIS DRAWING FOR STORING MULTIPLE LOTS WITHIN ONE STRUCTURE, THE BASIC STORAGE PATTERN AS SHOWN ON PAGES 4 THRU 13 CAN ALSO BE ADAPTED FOR STORAGE MORE THAN ONE LOT, LOTS WHEN STORED IN ACCORDANCE WITH THE BASIC STORAGE PATTERN MAY BE STORED WITH ONE OR MORE ROWS USED FOR EACH LOT. A SPACE OF APPROXIMATELY 1" WILL HAVE TO BE LEFT BETWEEN ADJACENT ROWS CONTAINING DIFFERENT LOTS. IN BASIC STORAGE PATTERNS WHERE THE WIDTH OF A ROW IS ESTABLISHED BY THE 65-3/16" CONTAINER DIMENSION, EACH ROW MAY BE A DIFFERENT LOT AND READILY REMOVABLE. IN BASIC STORAGE PATTERNS WHERE THE WIDTH OF THE ROW IS ESTABLISHED BY THE 42" UNIT DIMENSION, A LOT MUST CONSIST OF TWO OR MORE ROWS TO PROVIDE ADEQUATE SPACE TO ACCOMMODATE THE WIDTH OF A FORKLIFT TRUCK FOR STORING OR REMOVING THE LOT. THE 1" SPACE BETWEEN LOTS, AS STATED ABOVE WILL NOT BE EXCEEDED SOLELY TO ACCOMMODATE THE WIDTH OF A FORKLIFT TRUCK. FOR ADDITIONAL REQUIREMENTS AND GUIDANCE, SEE SPECIAL NOTES FOR MULTIPLE-LOT STORAGE ON PAGES 14 THRU 16.
- O. ANY "LIGHT" CONTAINER UNIT THAT DOES NOT CONTAIN A FULL QUANTITY GUIDANCE KITS WILL NOT BE BURIED IN STORAGE, IT MUST BE POSITIONED ADJACENT TO AN AISLE, PREFERABLY IN FRONT OF THE LOT.
- P. PORTIONS OF THE MAGAZINES, SUCH AS SIDEWALL, END WALLS, AND ROOFS HAVE NOT BEEN SHOWN IN THE STORAGE VIEWS FOR CLARITY PURPOSES.
- Q. A PRODUCTION OR STORAGE FACILITY IS AUTHORIZED TO HAVE ONE INCOMPLETE, UN-BANDED PARTIAL CONTAINER PER LOT IN A STORAGE STRUCTURE. THE CONTAINER MUST BE RE-BANDED WITH THE SAME SIZE AND QUANTITY OF STRAPS AS THE ORIGINAL UNIT.
- R. IN IGLOO, ARCH TYPE AND STRADLEY MAGAZINES WHICH HAVE SLOPING FLOORS, THE DEPICTED STORAGE PATTERNS, IN SOME CASES, INCLUDE CONTAINER STACKS WHICH STRADDLE THE RIDGE OF THE FLOOR AT THE CENTER OF THE MAGAZINE. FLOOR DUNNAGE IN THE FORM OF SHIMS WILL BE USED AS REQUIRED TO ACHIEVE SOUND AND ACCEPTABLE STABLE STACKS.
- S. CONVERSION TO METRIC EQUIVALENTS: DIMENSIONS WITHIN THIS DOCUMENT ARE EXPRESSED IN INCHES, AND WEIGHTS ARE EXPRESSED IN POUNDS. WHEN NECESSARY, THE METRIC EQUIVALENT MAY BE COMPUTED ON THE BASIS OF ONE INCH EQUALS 25.4MM, AND ONE POUND EQUALS 0.454 KG.
- T. OTHER COMPATIBLE ITEMS MAY BE STORED IN A MAGAZINE, WHICH IS PARTIALLY FILLED WITH THE DESIGNATED ITEM.

(CONTINUED AT RIGHT)

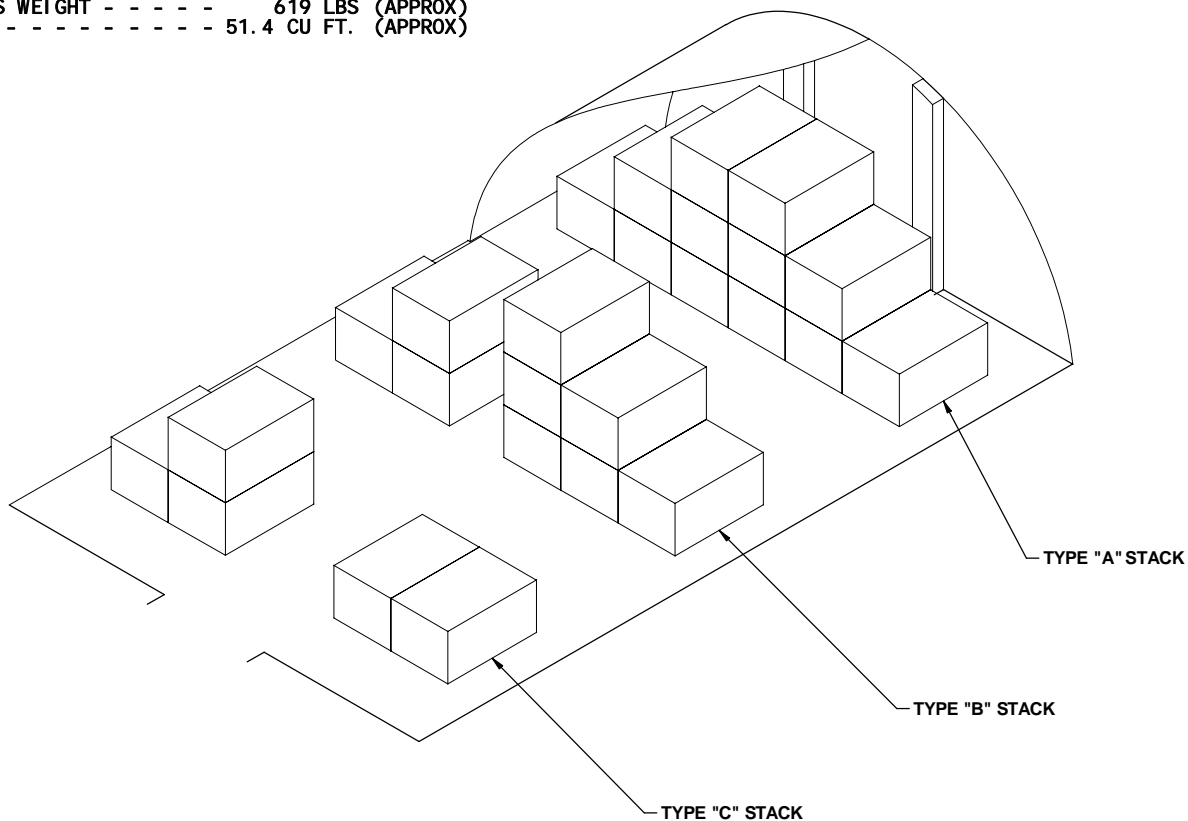
MATERIAL SPECIFICATIONS

LUMBER - - - - - : SEE TM 743-200-1 (DUNNAGE LUMBER) AND VOLUNTARY PRODUCT STANDARD PS 20.



CNU-589 CONTAINER

2 JDAM GUIDANCE KITS PER CONTAINER
 GROSS WEIGHT - - - - - 619 LBS (APPROX)
 CUBE - - - - - 51.4 CU FT. (APPROX)

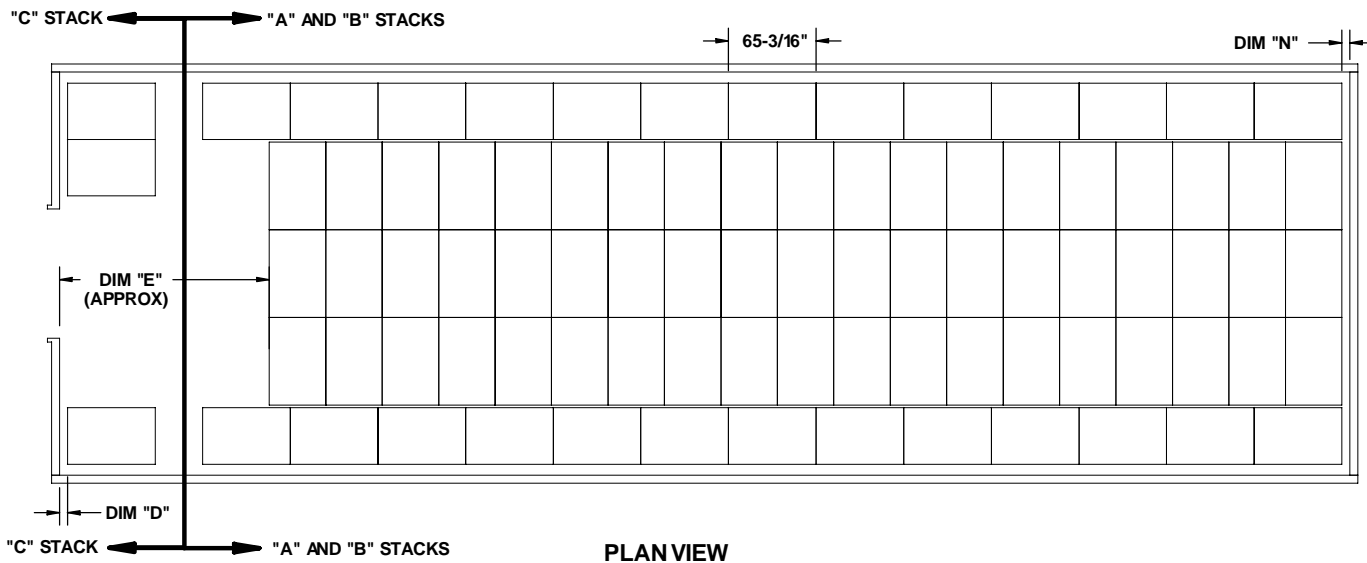


STACK IDENTIFICATION

A TYPE "A" STACK IS IDENTIFIED AS A GROUP OF ITEMS /UNITS WHICH EXTENDS FULL WIDTH AND HEIGHT OF THE MAGAZINE, AND IS ONE ITEM/UNIT LONG IN THE LENGTH OF THE MAGAZINE.

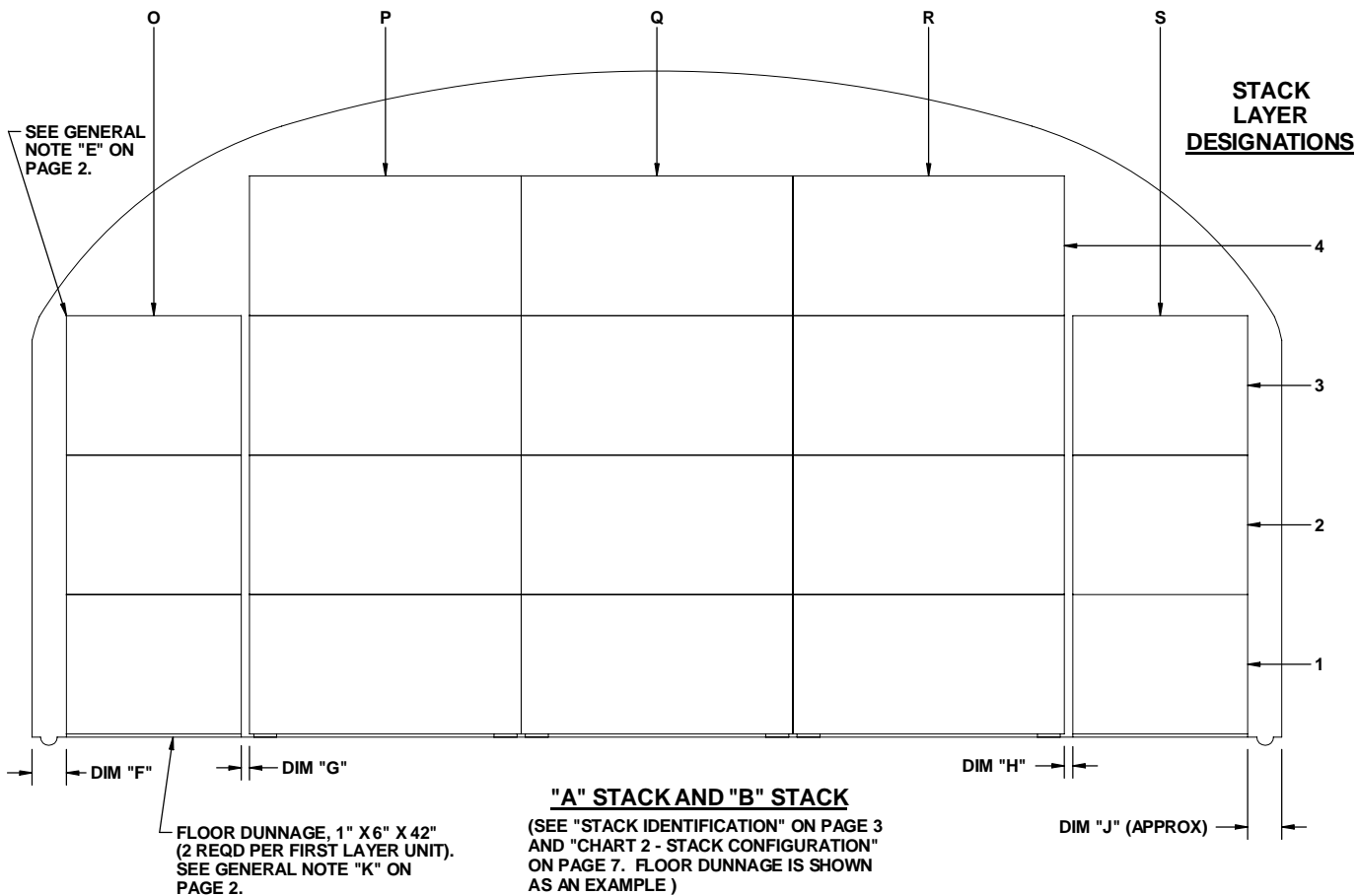
A TYPE "B" STACK IS IDENTIFIED AS A GROUP OF ITEMS/UNITS WHICH EXTEND FULL WIDTH AND HEIGHT OF THE MAGAZINE, AND IS ONE UNIT/ITEM LONG, BUT HAS AN AISLE AT OR NEAR THE CENTER OF THE WIDTH OF THE STACK.

A TYPE "C" STACK IS IDENTIFIED AS A GROUP OF ITEMS/UNITS WHICH IS ONE UNIT/ITEM LONG AND CONSISTS OF PARTIAL STACKS ON EACH SIDE OF THE MAGAZINE, USUALLY ONE ITEM/UNIT HIGH ON ONE SIDE OF THE MAGAZINE.



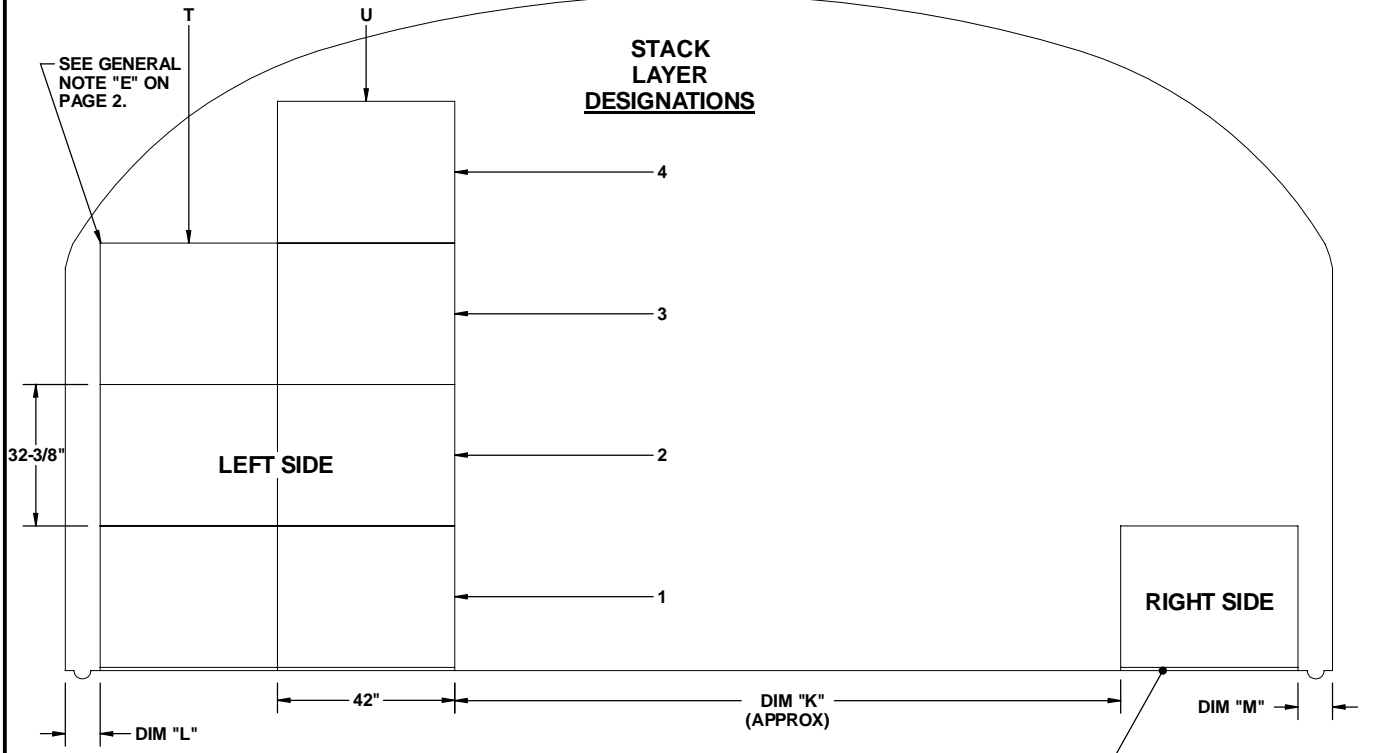
NOTE: FOR IDENTIFICATION OF LETTERED DIMENSIONS REFER TO CHART 1 ON PAGE 6.

STACK COLUMN DESIGNATIONS



STACK COLUMN DESIGNATIONS

STACK LAYER DESIGNATIONS

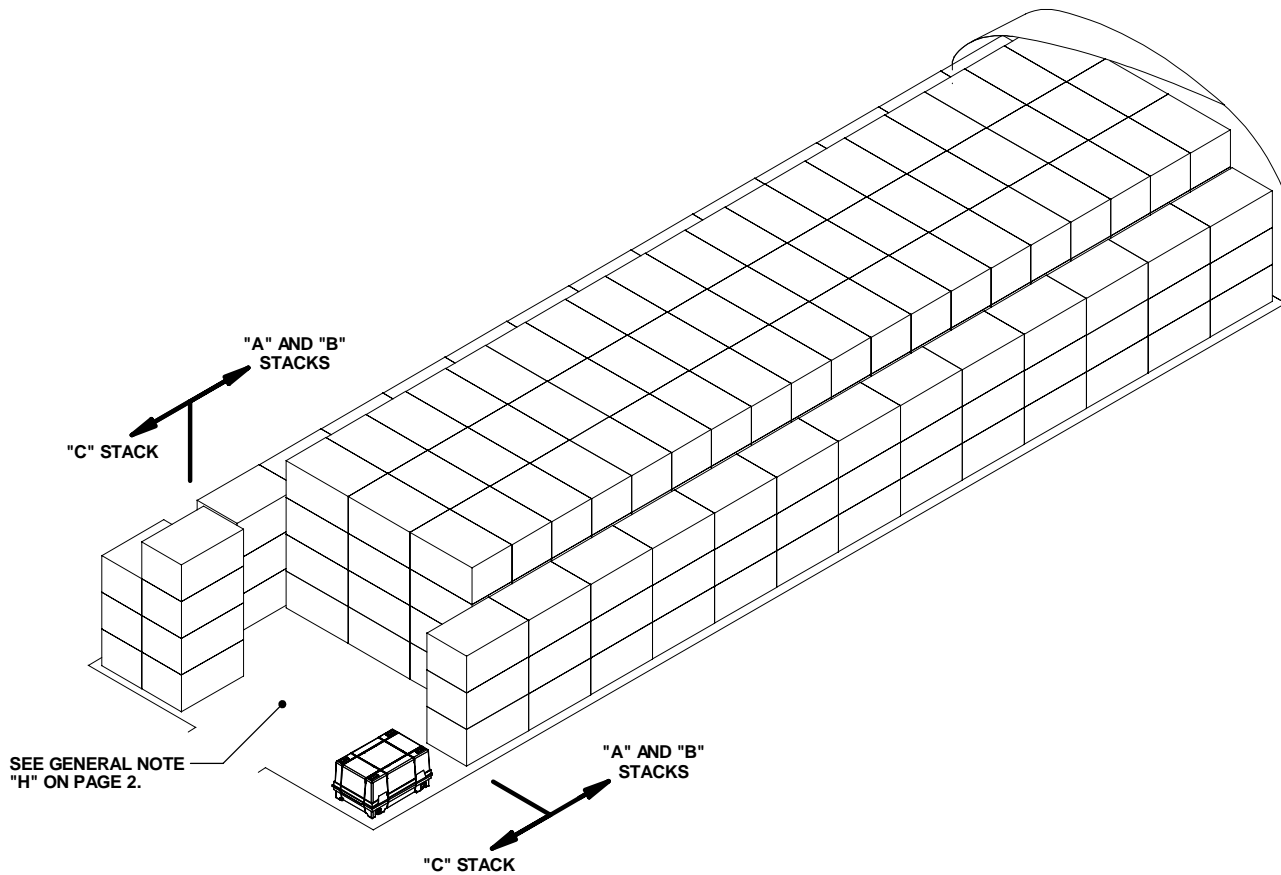


"C" STACK

TYPICAL "C" STACK FOR STRADLEY MAGAZINE.
 (SEE "STACK IDENTIFICATION " ON PAGE 3 AND
 "CHART 2 - STACK CONFIGURATION" ON PAGE 7)

FLOOR DUNNAGE, 1" X 6" X 42"
 (2 REQD PER FIRST LAYER UNIT).
 SEE GENERAL NOTE "K" ON
 PAGE 2.

**NOTE: FOR IDENTIFICATION OF
 LETTERED DIMENSIONS REFER
 TO CHART 1 ON PAGE 6.**



ISOMETRIC VIEW

STRADLEY MAGAZINE SHOWN AS TYPICAL.

CHART 1 - DIMENSIONS

MAGAZINE DIMENSIONS	MAGAZINE TYPE													
	IGLOO			ARCH 12'		ARCH 11'		ARCH 10'		OVAL ARCH	STRADLEY	STEEL ARCH		
	40'-4"	60'-8"	81'-0"	26'-6"	25'-0"	40'-0"	80'-0"	40'-0"	80'-0"	89'-0"	80'-0"	59'-0"	89'-0"	
LENGTH	40'-4"	60'-8"	81'-0"	26'-6"	25'-0"	40'-0"	80'-0"	40'-0"	80'-0"	89'-0"	80'-0"	59'-0"	89'-0"	
WIDTH				26'-6"	25'-0"	25'-0"	25'-0"		25'-0"		24'-10"	25'-0"	25'-0"	24'-11"
HEIGHT	12'-9"			12'-1-3/4"			11'-0"		10'-0"		14'-5"	14'-0"	14'-0"	13'-6"
DIMENSIONS	PALLET UNIT SPACING DIMENSIONS													
DIM "D" ("C" STACK FRONT)	6"	6"	6"	6"	6"	6"	6"	6"	6"	6"	6"	6"	6"	6"
DIM "E" (M HE AISLE APPROX)	11'-10"	11'-0"	10'-7"	9'-11"	10'-10"	10'-0"	10'-10"	12'-4"	11'-6"	13'-0"	11'-9"	13'-0"	9'-8"	11'-9"
DIM "F" ("B" STACK LEFT)	17"	17"	17"	19"	10"	10"	40"	40"	20"	20"	7"	10"	10"	10"
DIM "G" ("A" TO "B" LEFT)	2"	2"	2"	0"	0"	0"	2"	2"	0"	0"	4"	0"	0"	0"
DIM "H" ("A" TO "B" RIGHT)	2"	2"	2"	0"	0"	0"	2"	2"	NA	NA	4"	0"	0"	0"
DIM "J" ("B" STACK RIGHT)	17"	17"	17"	19"	10"	10"	40"	40"	NA	NA	6"	10"	10"	9"
DIM "K" (M HE AREA)	13'-7"	13'-7"	13'-7"	12'-9"	12'-10"	12'-4"	11'-9"	11'-9"	11'-1"	11'-1"	13'-6"	12'-9"	12'-9"	12'-5"
DIM "L" ("C" STACK LEFT)	17"	17"	17"	19"	10"	10"	16"	16"	20"	20"	7"	10"	10"	14"
DIM "M" ("C" STACK RIGHT)	17"	17"	17"	19"	10"	10"	16"	16"	20"	20"	6"	10"	10"	9"
DIM "N" ("A" STACK BACK)	6"	6"	6"	6"	14"	14"	14"	14"	6"	6"	6"	6"	6"	6"

CHART 2 - STACK CONFIGURATION

MAGAZINE TYPE

QUANTITY PER MAGAZINE	IGLOO			ARCH 12'	ARCH 12' X 25' W		ARCH 11'		ARCH 10'		OVAL ARCH	STRADLEY	STEEL ARCH	
	40'-4" L	60'-8" L	81'-0" L	26'-6" W	40'-0" L	80'-0" L	40'-0" L	80'-0" L	40'-0" L	80'-0" L	ARCH		59'-0" L	89'-0" L
	96	159	230	170	96	220	72	166	65	149	362	314	182	256

"A" STACK CONFIGURATION

LAYER	CONTAINERS PER LAYER													
1	3(P-R)			3(P-R)	3(P-R)		2(P-Q)		3(P-R)		3(P-R)	3(P-R)	3(P-R)	
2	3(P-R)			3(P-R)	3(P-R)		2(P-Q)		3(P-R)		3(P-R)	3(P-R)	3(P-R)	
3	3(P-R)			3(P-R)	3(P-R)		2(P-Q)		1(Q)		3(P-R)	3(P-R)	3(P-R)	
4	1(Q)			1(Q)	1(Q)		0		0		3(P-R)	3(P-R)	1(Q)	
SINGLE STACK TOTAL	10			10	10		6		7		12	12	10	
NUMBER OF STACKS	8	14	20	20	8	19	8	19	8	19	22	19	14	22
"A" STACK TOTAL	80	140	200	140	80	190	48	114	56	133	264	228	140	220

"B" STACK CONFIGURATION - TO THE LEFT OF "A" STACK

LAYER	CONTAINERS PER LAYER													
1	1(O)			1(O)	1(O)		1(O)		1(O)		1(O)	1(O)	1(O)	1(O)
2	0			0	0		1(O)		0		1(O)	1(O)	1(O)	0
3	0			0	0		0		0		1(O)	1(O)	0	0
4	0			0	0		0		0		0	0	0	0
SINGLE STACK TOTAL	1			1	1		2		1		3	3	2	1
NUMBER OF STACKS	6	9	13	13	6	13	5	12	5	12	15	13	9	15
"B" STACK TOTAL	6	9	13	13	6	13	10	24	5	12	45	39	18	15

"B" STACK CONFIGURATION - TO THE RIGHT OF "A" STACK

LAYER	CONTAINERS PER LAYER													
1	1(S)			1(S)	1(S)		1(S)		1(S)		1(S)	1(S)	1(S)	1(S)
2	0			0	0		1(S)		0		1(S)	1(S)	1(S)	0
3	0			0	0		0		0		1(S)	1(S)	0	0
4	0			0	0		0		0		0	0	0	0
SINGLE STACK TOTAL	1			1	1		2		1		3	3	2	1
NUMBER OF STACKS	6	9	13	13	6	13	5	12	0	0	15	13	9	15
"B" STACK TOTAL	6	9	13	13	6	13	10	24	0	0	45	39	18	15

"C" STACK CONFIGURATION - LEFT SIDE

LAYER	CONTAINERS PER LAYER													
1	2(T-U)			2(T-U)		2(T-U)		2(T-U)		2(T-U)	2(T-U)	2(T-U)		
2	1(U)			1(U)		1(U)		1(U)		2(T-U)	2(T-U)	2(T-U)		
3	0			0		0		0		2(T-U)	2(T-U)	1(U)		
4	0			0		0		0		1(U)	1(U)	0		
SINGLE STACK TOTAL	3			3		3		3		7	7	5		
NUMBER OF STACKS	1			1		1		1		1	1	1		
"C" STACK LF TOTAL	3			3		3		3		7	7	5		

"C" STACK CONFIGURATION - RIGHT SIDE

"C" STACK RT TOTAL	1			1		1		1		1	1	1	
--------------------	---	--	--	---	--	---	--	---	--	---	---	---	--

SPECIAL NOTES:

- THE FOLLOWING NOTES, CHART 1 ON PAGE 6 AND CHART 2 ON THIS PAGE ARE PRESENTED AS GUIDANCE IN THE SELECTION OF A STORAGE PATTERN, AND IN DETERMINING THE QUANTITY OF CONTAINERS WHICH CAN BE STORED IN THE STORAGE MAGAZINES LISTED IN THESE CHARTS.
- CHART 1 ON PAGE 6 DESCRIBES THE STORAGE MAGAZINE GENERAL DIMENSIONS AND THE DIMENSIONS OF THE CONTAINER SPACING WITHIN THE STORAGE MAGAZINES.
- DIMENSIONS "A", "B" AND "C" HAVE BEEN OMITTED TO AVOID CONFUSION WITH STACKS "A", "B" AND "C".
- CHART 2 ON THIS PAGE DETAILS THE QUANTITY OF CONTAINERS IN EACH TYPE OF MAGAZINE AND THE LAYOUT OF THE STACKS FOR EACH TYPE OF MAGAZINE. THE CHART SHOWS THE NUMBER OF CONTAINERS IN EACH STACK LAYER AND THE LOCATION OF THE CONTAINERS ON EACH LAYER.

(CONTINUED AT RIGHT)

EXAMPLE:

CHART 2 - "C" STACK CONFIGURATION - LEFT SIDE
MAGAZINE: STRADLEY

LAYER NUMBER 1: 2 (T-U)
LAYER NUMBER 2: 2 (T-U)
LAYER NUMBER 3: 2 (T-U)
LAYER NUMBER 4: 1 (U)

EXPLANATION:

LAYER 1 (BOTTOM LAYER) HAS CONTAINERS FROM THE "T" COLUMN (NEAREST THE LEFT SIDE OF THE MAGAZINE) TO THE "U" COLUMN.

LAYER 2 (ON TOP OF LAYER 1) HAS TWO CONTAINERS FROM THE "T" COLUMN (NEAREST THE LEFT SIDE OF THE MAGAZINE) TO THE "U" COLUMN.

LAYER 3 (ON TOP OF LAYER 2) HAS TWO CONTAINERS FROM THE "T" COLUMN (NEAREST THE LEFT SIDE OF THE MAGAZINE) TO THE "U" COLUMN.

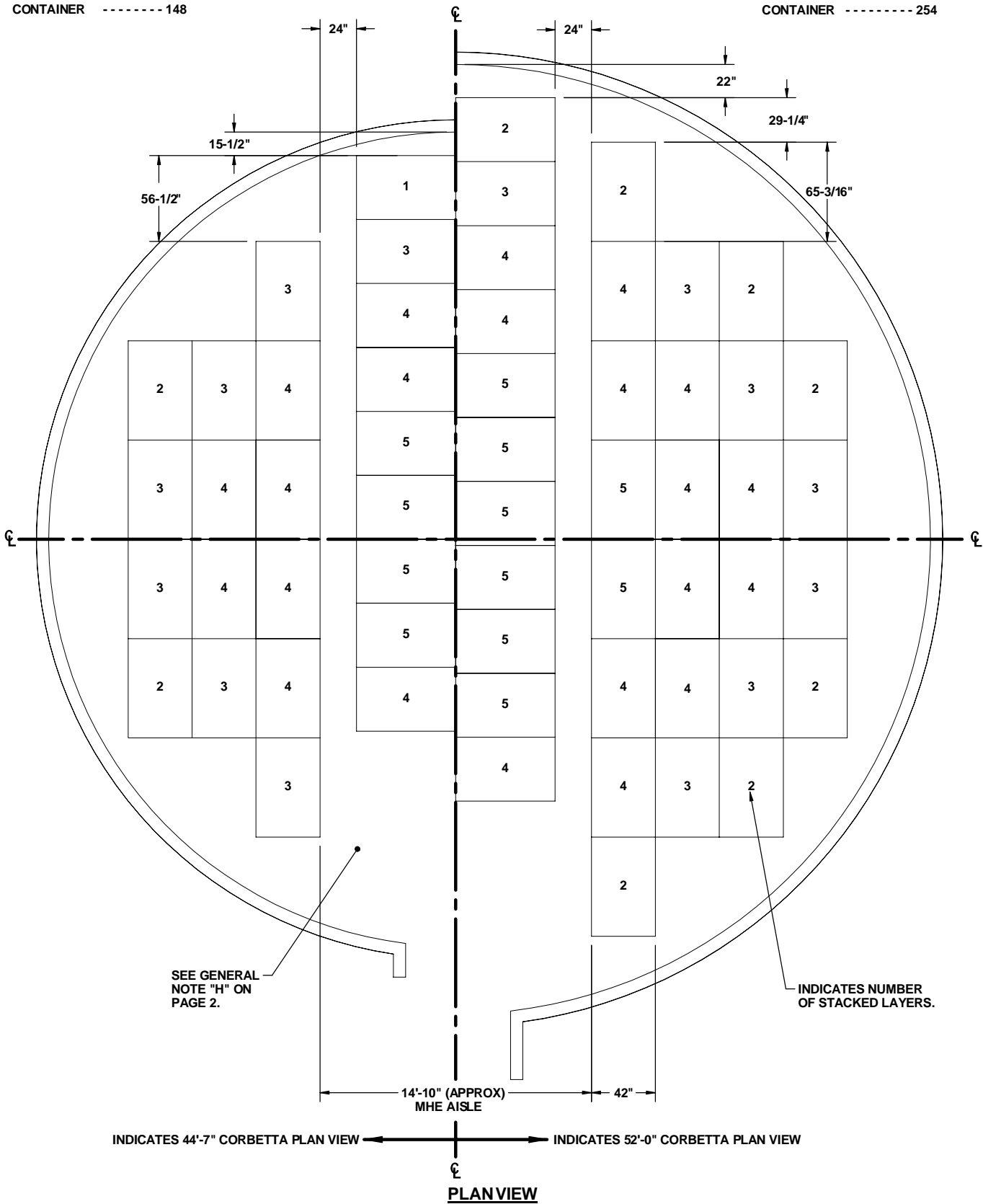
LAYER 4 (ON TOP OF LAYER 3) HAS ONE CONTAINER AT THE "U" COLUMN (NEAREST THE DOOR).

STORAGE IN 44'-7" MAGAZINE

STORAGE IN 52'-0" MAGAZINE

ITEM QUANTITY
CONTAINER ----- 148

ITEM QUANTITY
CONTAINER ----- 254



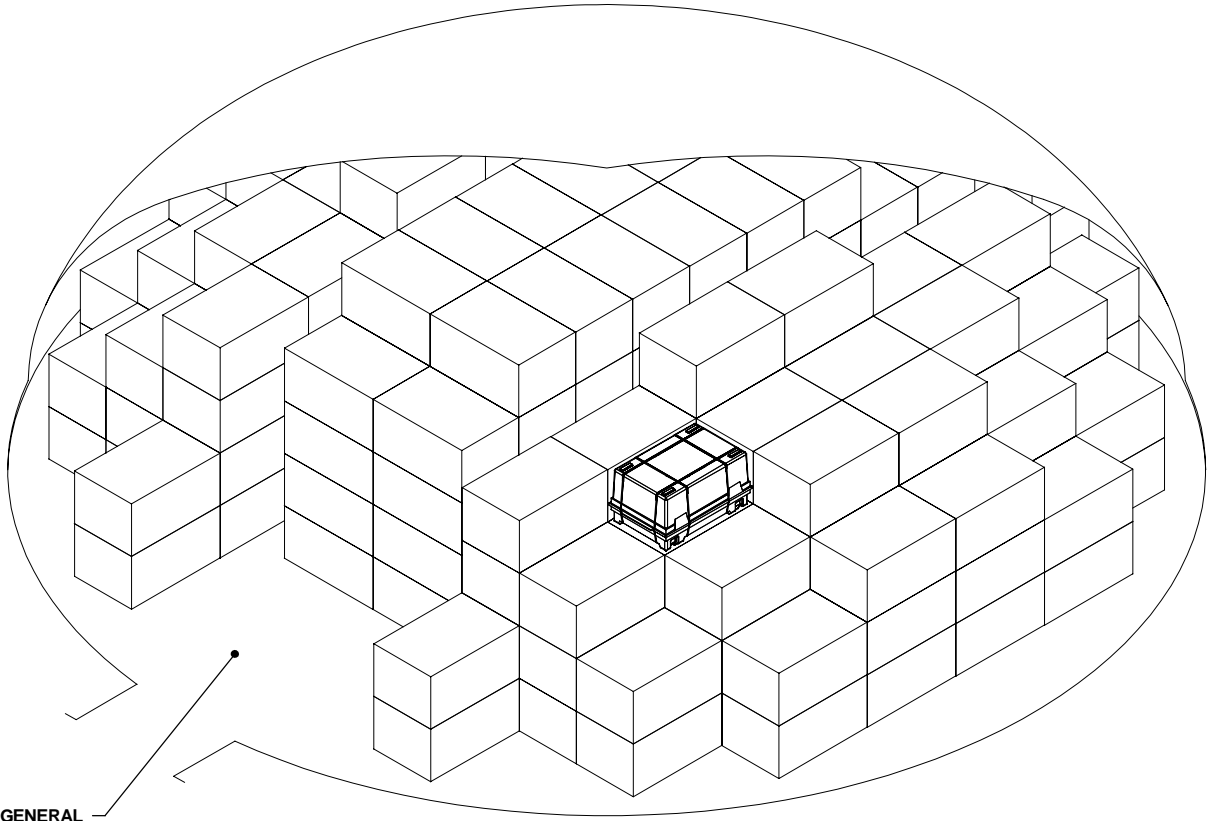
SEE GENERAL NOTE "H" ON PAGE 2.

INDICATES NUMBER OF STACKED LAYERS.

INDICATES 44'-7" CORBETTA PLAN VIEW ← → INDICATES 52'-0" CORBETTA PLAN VIEW

PLANVIEW

THE RIGHT HAND PLAN VIEW INDICATES A 52' - 0" CORBETTA MAGAZINE, AND THE LEFT HAND PLAN VIEW INDICATES A 44' - 7" CORBETTA MAGAZINE. BOTH SIZE MAGAZINE LAYOUTS ARE SYMMETRICAL AROUND THE VERTICAL CENTER LINE.

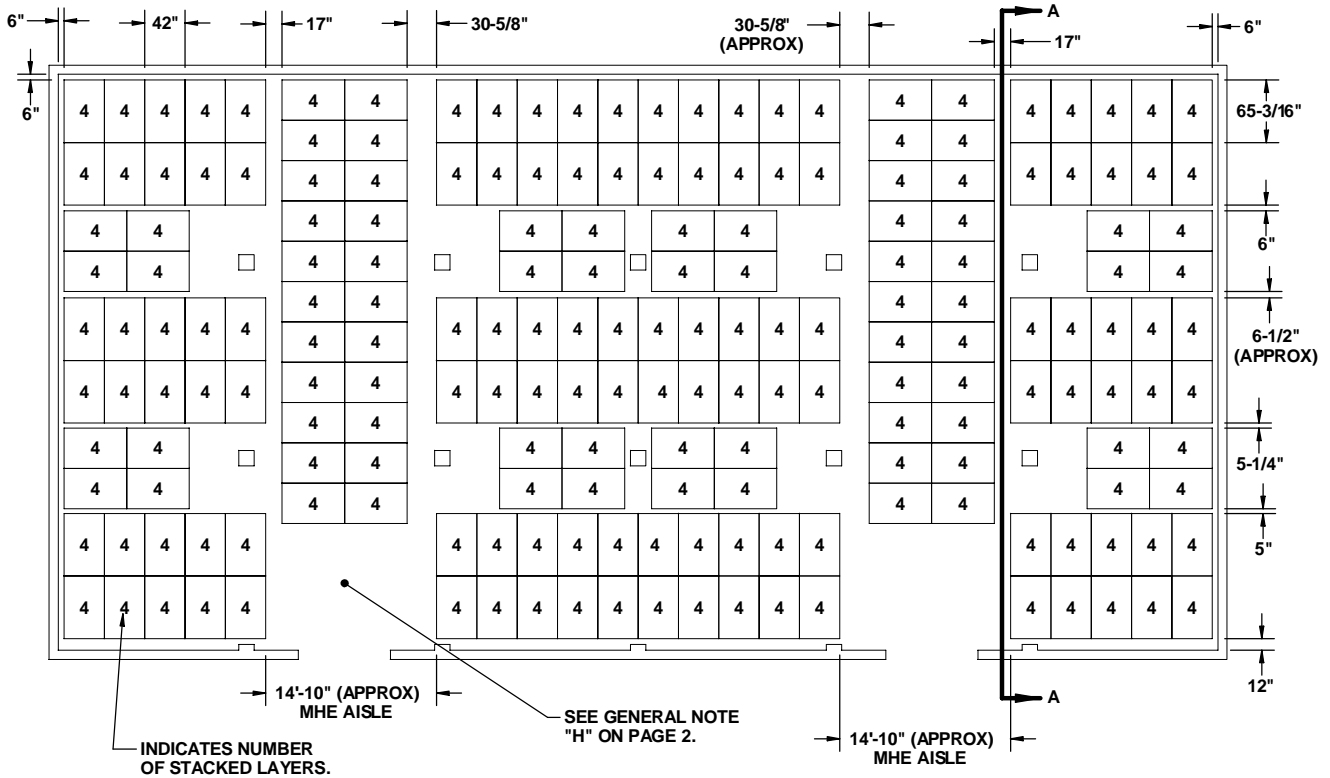


SEE GENERAL
NOTE "H" ON
PAGE 2.

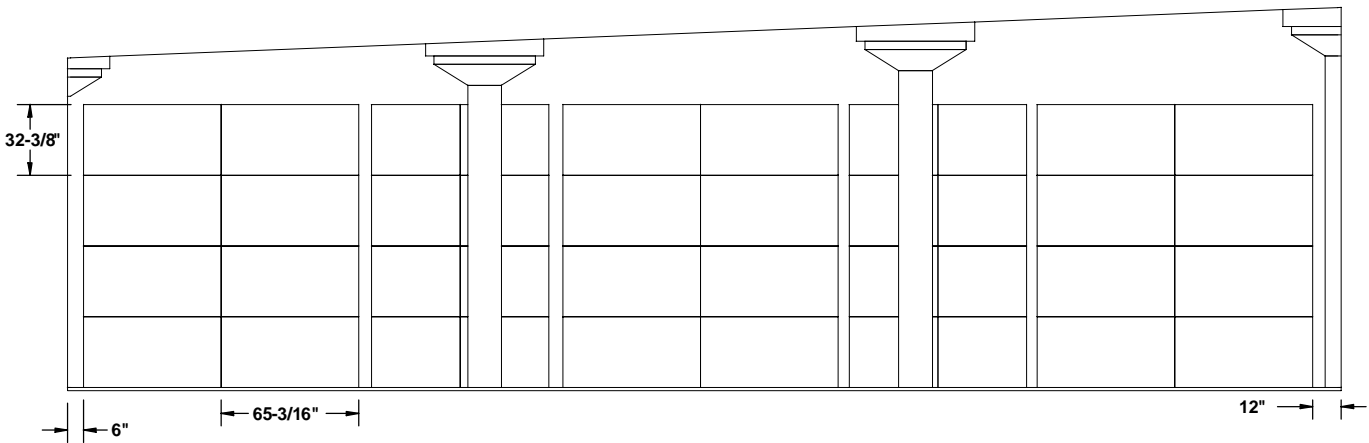
ISOMETRIC VIEW
(52' - 0" DIA MAGAZINE)

**STORAGE IN RECTANGULAR
MAGAZINE**

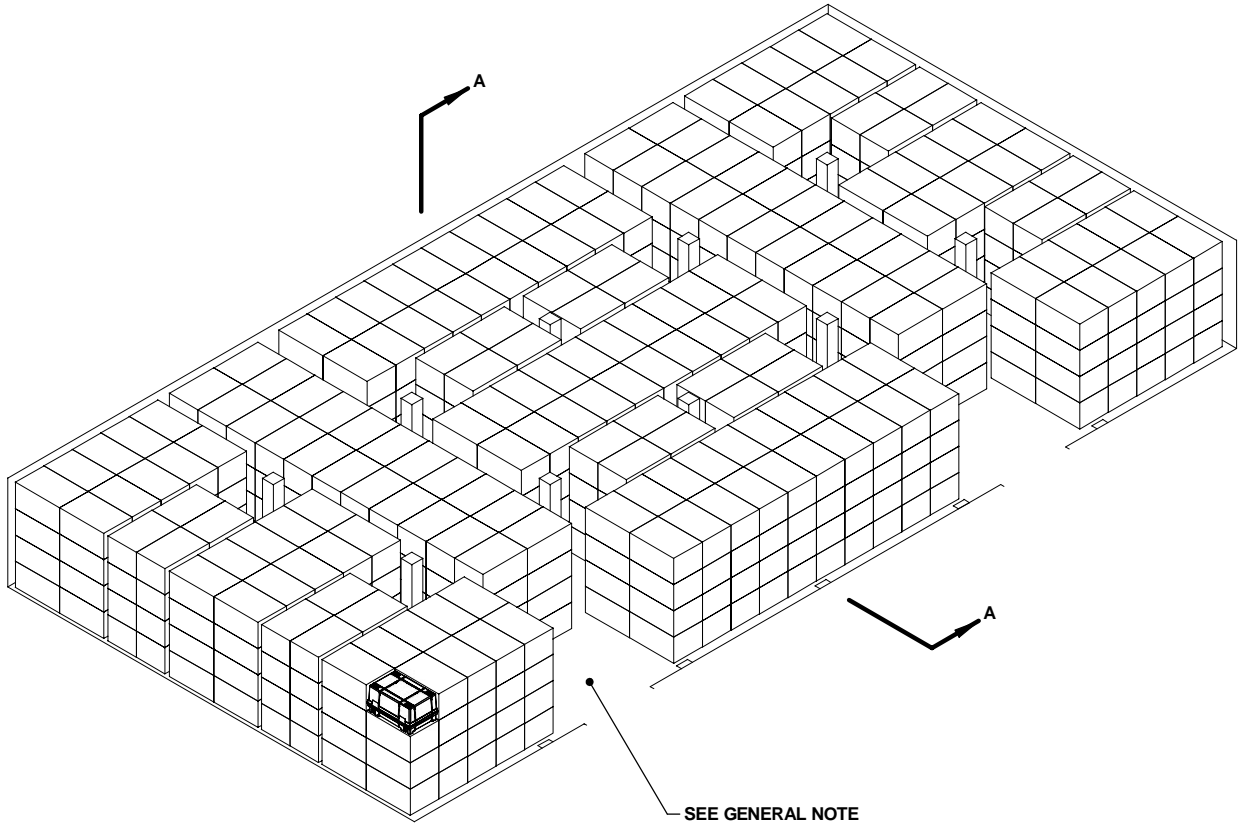
ITEM QUANTITY
CONTAINER ----- 784



PLAN VIEW



SECTION A-A



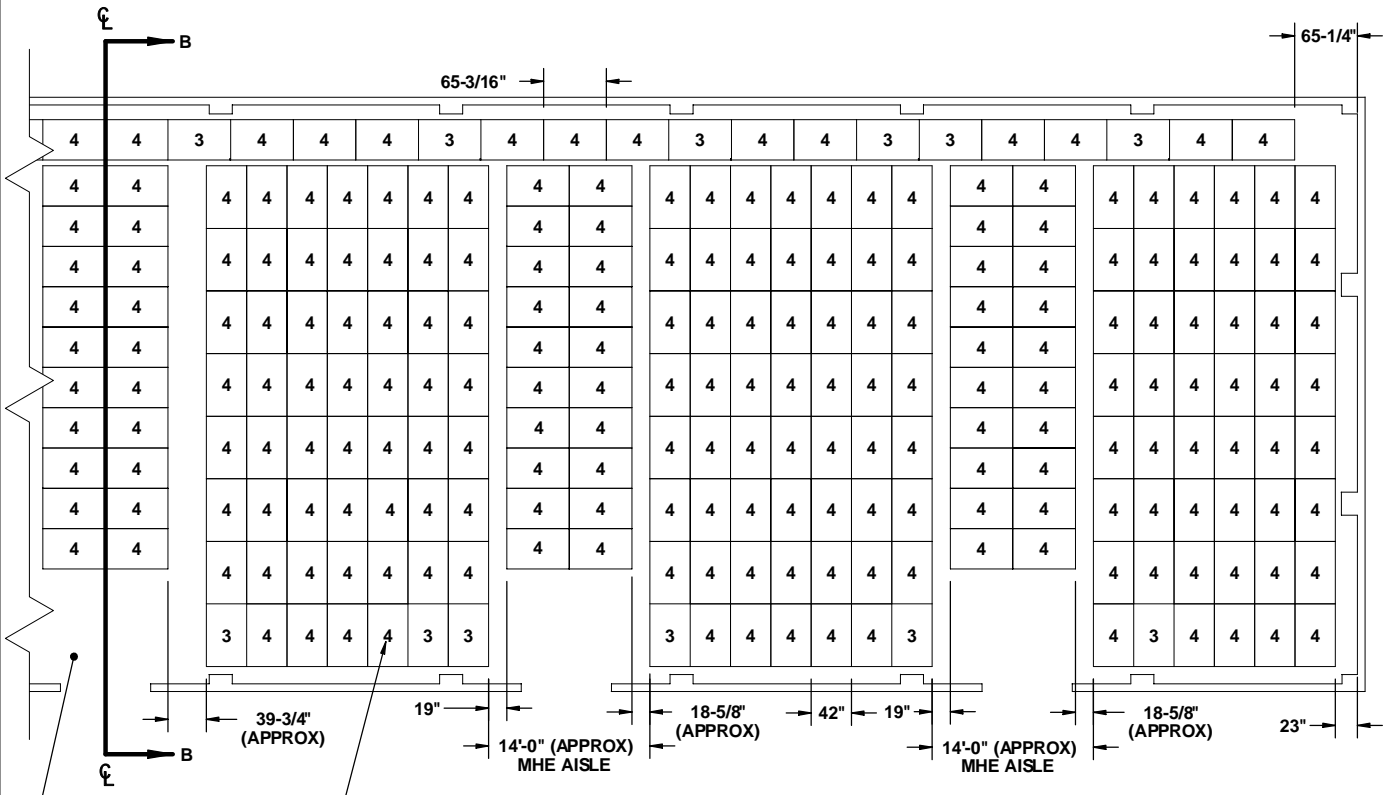
SEE GENERAL NOTE
"H" ON PAGE 2.

ISOMETRIC VIEW

(50'-0" MAGAZINE)

STORAGE IN STANDARD ABOVE-GROUND MAGAZINE

ITEM QUANTITY
CONTAINER ----- 1812

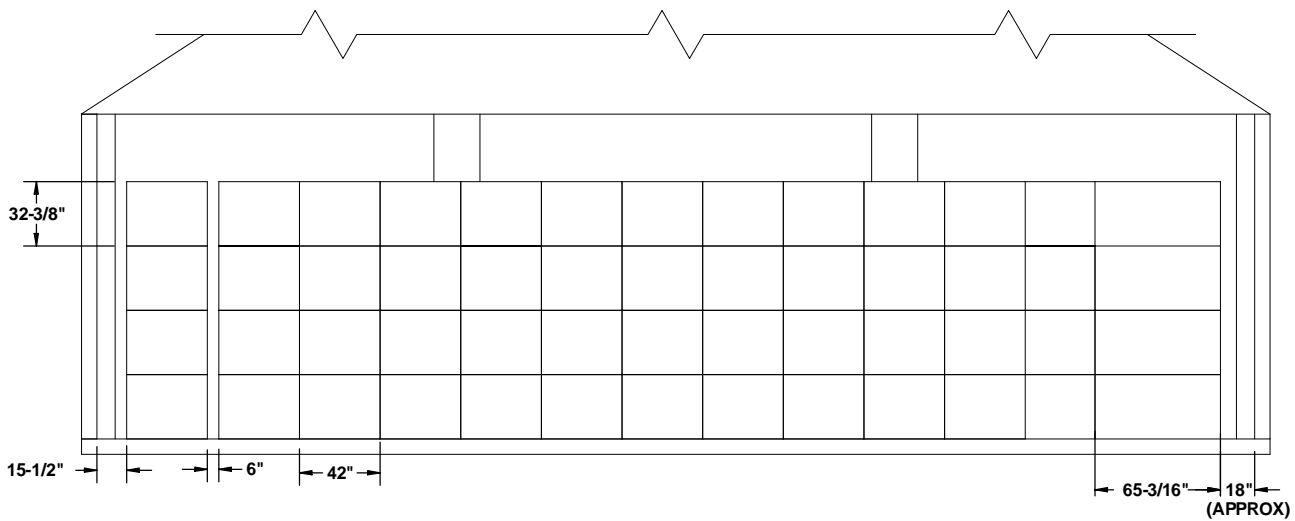


SEE GENERAL NOTE "H" ON PAGE 2.

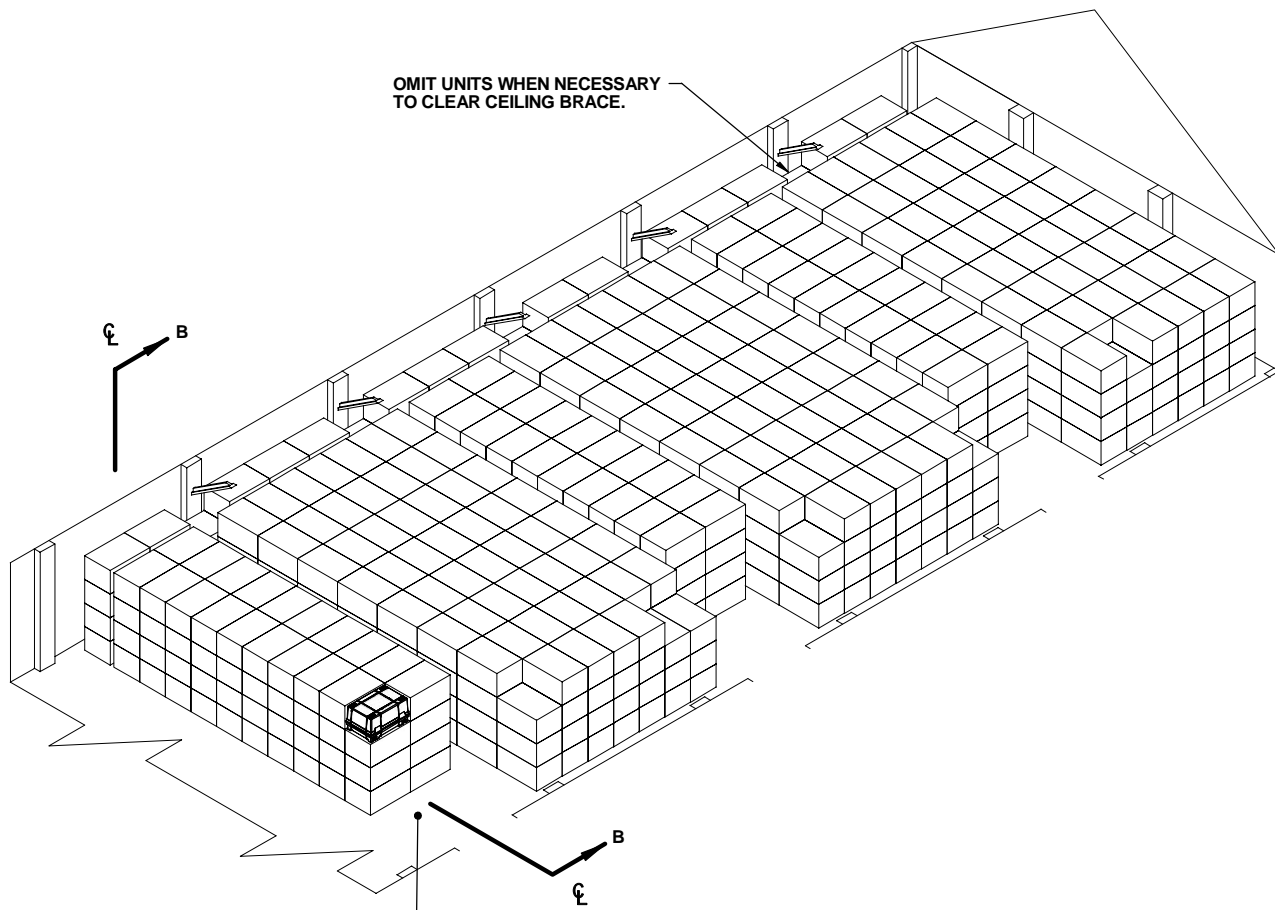
INDICATES NUMBER OF STACKED LAYERS.

PLAN VIEW

(ONE HALF OF A STANDARD ABOVE-GROUND MAGAZINE)



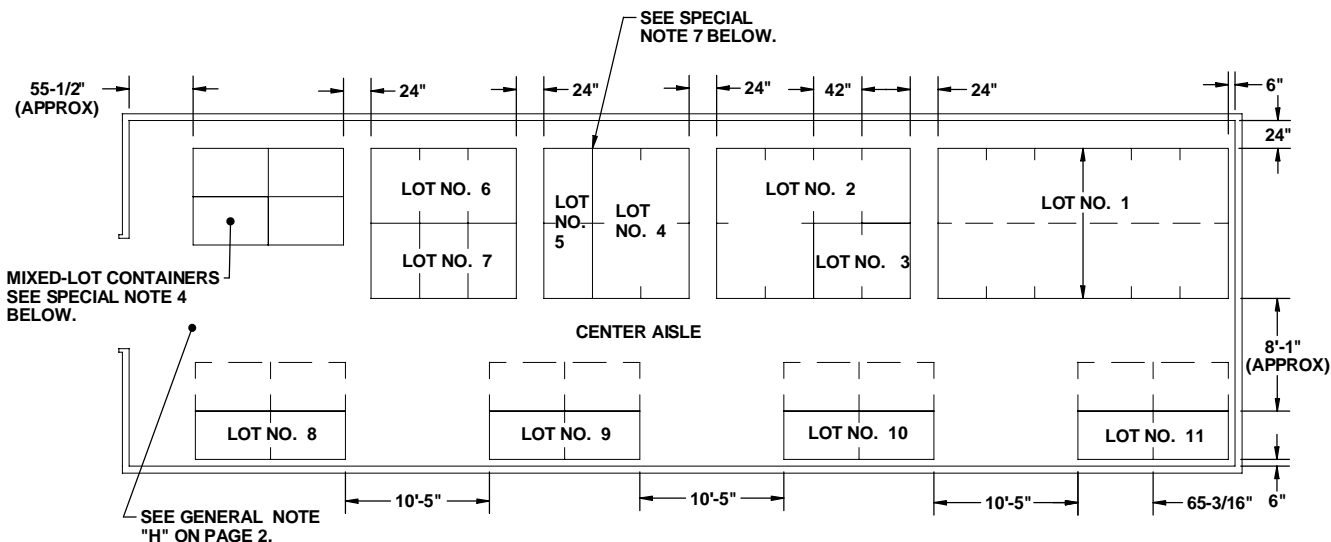
SECTION B-B



SEE GENERAL NOTE
"H" ON PAGE 2.

ISOMETRIC VIEW
(ONE HALF OF A STANDARD
ABOVE GROUND MAGAZINE)

217'-4" L X 50'-3" W STANDARD ABOVE GROUND MAGAZINE



PLAN VIEW

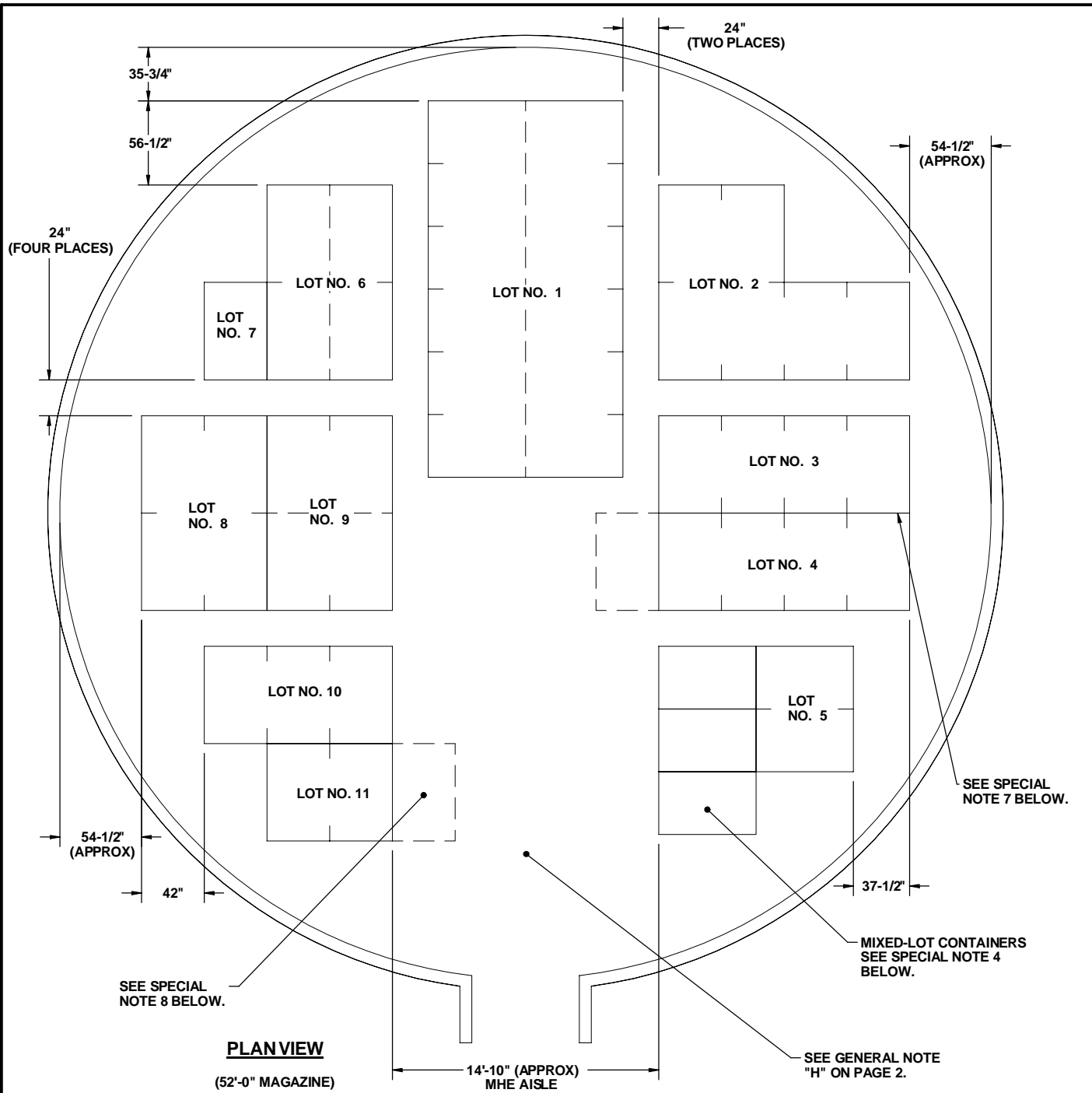
SPECIAL NOTES:

1. THE STORAGE PLAN SHOWN IN THIS PAGE IS TYPICAL ONLY, AND APPLIES TO NUMEROUS LOTS. ADAPTATIONS MAY BE MADE AS NUMBER AND SIZES OF LOTS TO BE STORED IN MAGAZINE REQUIRE.
2. AN INSPECTION/INVENTORY AISLE NOT LESS THAN 24" WIDE MUST BE PROVIDED AT ONE SIDE OR END OF EACH LOT.
3. GENERALLY, THE LARGEST LOT SHOULD BE STORED IN THE REAR OR ON ONE SIDE OF THE MAGAZINE. HOWEVER, THESE AREAS MAY BE USED TO STORE MORE THAN ONE LOT BY ERECTING STACKS SIMILAR TO THOSE SHOWN IN THE FRONTAL AREA. AN MHE AISLE WILL BE REQUIRED ON ONE SIDE OF THE MAGAZINE, AND EACH LOT MUST BE ACCESSIBLE FOR REMOVAL AND INSPECTION/INVENTORY IN ACCORDANCE WITH OTHER CRITERIA SPECIFIED IN THESE SPECIAL NOTES AND IN THE GENERAL NOTES ON PAGE 2.
4. A MIXED-LOT CONTAINER MAY HAVE TWO LOTS PER CONTAINER. HOWEVER, BOTH LOTS WITHIN THE CONTAINER MUST HAVE THE SAME NATIONAL STOCK NUMBER AND CONDITION CODE.

(CONTINUED AT RIGHT)

(SPECIAL NOTES CONTINUED)

5. EACH LOT WITHIN THE MAGAZINE MUST BE ACCESSIBLE FOR MOVEMENT BY MHE. CONTAINERS OF A SINGLE-LOT OR MIXED-LOT CONTAINERS ARE CONSIDERED "ACCESSIBLE" IF NO MORE THAN 12 "LIFTS" OF ANOTHER LOT OR LOTS HAVE TO BE MADE TO GAIN ACCESS TO THE SINGLE-LOT OR MIXED-LOT UNIT. A "LIFT" MAY CONSIST OF ONE OR MORE CONTAINERS, PROVIDING THE CAPACITY OF THE MHE PERMITS, AND SAFE HANDLING IS NOT JEOPERDIZED.
6. FOR STORAGE OF MULTIPLE LOTS, THE DISTANCE FROM THE SIDEWALL WILL BE BASED ON THE OVERHEAD CLEARANCE REQUIRED FOR MHE.
7. WHEN TWO LOTS ARE STORED ADJACENT TO EACH OTHER, THEY SHOULD BE SEPARATED BY AT LEAST 1" TO PROVIDE CLEARANCE FOR REMOVAL OF EITHER LOT.
8. THE MHE AISLE MAY BE USED TO STORE ONE OR MORE STACKS OF ADDITIONAL ITEMS THAT ARE FROM A LOT ADJACENT TO THE CENTER AISLE. ADEQUATE SPACE FROM MHE OPERATION MUST BE MADE AVAILABLE FOR THE ADDITIONAL STORAGE. ALSO, COMPLIANCE WITH ALL OF THE MULTIPLE-LOT CRITERIA AS SET FORTH ON THIS PAGE MUST BE OBSERVED.



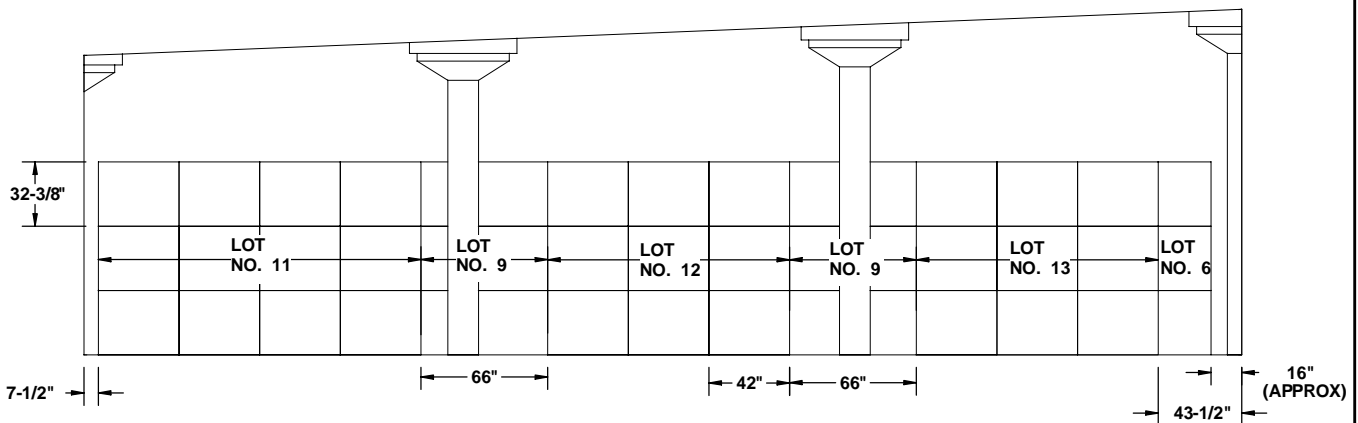
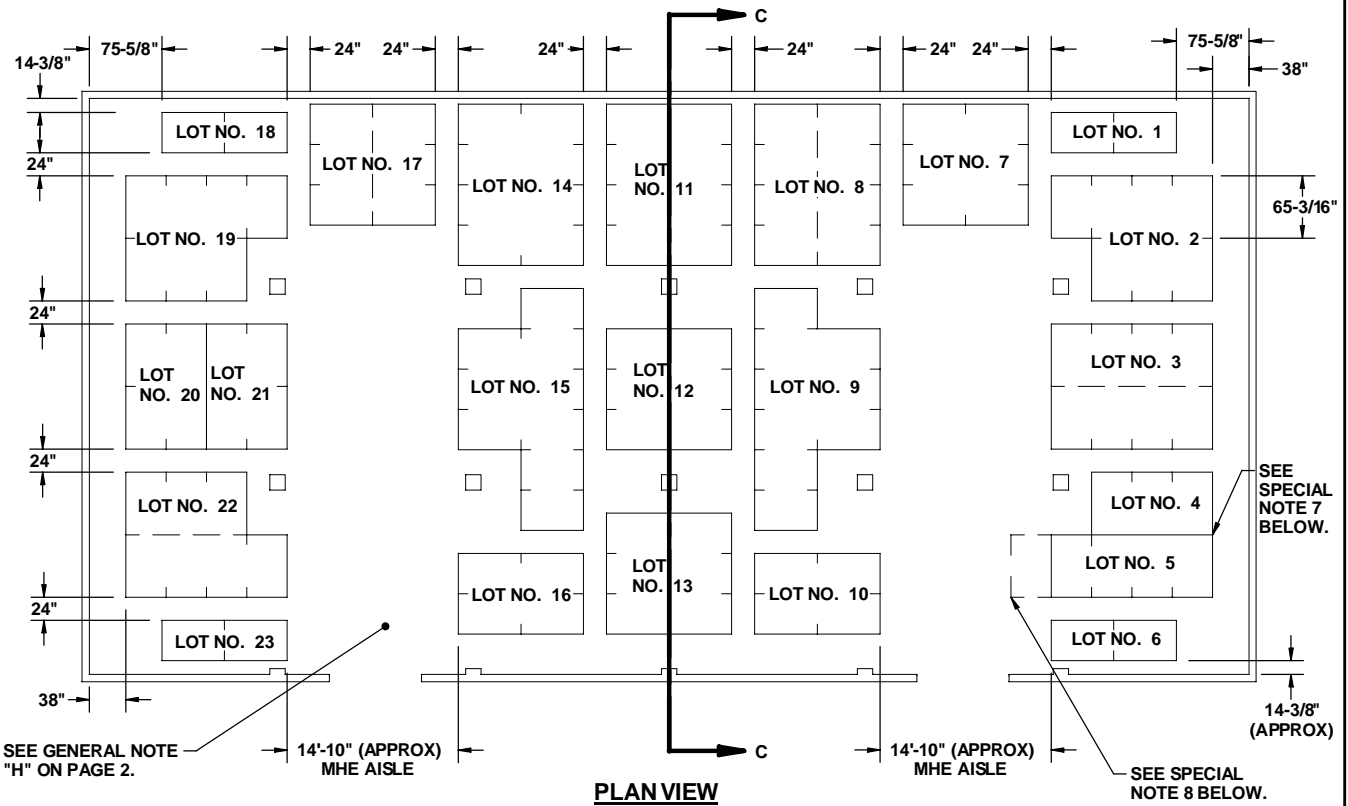
SPECIAL NOTES:

1. THE STORAGE PLAN SHOWN IN THIS PAGE IS TYPICAL ONLY, AND APPLIES TO NUMEROUS LOTS. ADAPTATIONS MAY BE MADE AS NUMBER AND SIZES OF LOTS TO BE STORED IN MAGAZINE REQUIRE.
2. AN INSPECTION/INVENTORY AISLE NOT LESS THAN 24" WIDE MUST BE PROVIDED AT ONE SIDE OR END OF EACH LOT.
3. GENERALLY, THE LARGEST LOT SHOULD BE STORED IN THE REAR OR ON ONE SIDE OF THE MAGAZINE. HOWEVER, THESE AREAS MAY BE USED TO STORE MORE THAN ONE LOT BY ERECTING STACKS SIMILAR TO THOSE SHOWN IN THE FRONTAL AREA. AN MHE AISLE WILL BE REQUIRED ON ONE SIDE OF THE MAGAZINE, AND EACH LOT MUST BE ACCESSIBLE FOR REMOVAL AND INSPECTION/INVENTORY IN ACCORDANCE WITH OTHER CRITERIA SPECIFIED IN THESE SPECIAL NOTES AND IN THE GENERAL NOTES ON PAGE 2.
4. A MIXED-LOT CONTAINER MAY HAVE TWO LOTS PER CONTAINER. HOWEVER, BOTH LOTS WITHIN THE CONTAINER MUST HAVE THE SAME NATIONAL STOCK NUMBER AND CONDITION CODE.

5. EACH LOT WITHIN THE MAGAZINE MUST BE ACCESSIBLE FOR MOVEMENT BY MHE. CONTAINERS OF A SINGLE-LOT OR MIXED-LOT CONTAINERS ARE CONSIDERED "ACCESSIBLE" IF NO MORE THAN 12 "LIFTS" OF ANOTHER LOT OR LOTS HAVE TO BE MADE TO GAIN ACCESS TO THE SINGLE-LOT OR MIXED-LOT CONTAINER. A "LIFT" MAY CONSIST OF ONE OR MORE CONTAINERS, PROVIDING THE CAPACITY OF THE MHE PERMITS, AND SAFE HANDLING IS NOT JEOPARDIZED.
6. FOR STORAGE OF MULTIPLE LOTS, THE DISTANCE FROM THE SIDEWALL WILL BE BASED ON THE OVERHEAD CLEARANCE REQUIRED FOR MHE.
7. WHEN TWO LOTS ARE STORED ADJACENT TO EACH OTHER, THEY SHOULD BE SEPARATED BY AT LEAST 1" TO PROVIDE CLEARANCE FOR REMOVAL OF EITHER LOT.
8. THE MHE AISLE MAY BE USED TO STORE ONE OR MORE STACKS OF ADDITIONAL ITEMS THAT ARE FROM A LOT ADJACENT TO THE MHE AISLE. ADEQUATE SPACE FROM MHE OPERATION MUST BE MADE AVAILABLE FOR THE ADDITIONAL STORAGE. ALSO, COMPLIANCE WITH ALL OF THE MULTIPLE-LOT CRITERIA AS SET FORTH ON THIS PAGE MUST BE OBSERVED.

(CONTINUED AT RIGHT)

TYPICAL MULTIPLE-LOT STORAGE IN CORBETTA MAGAZINE



SPECIAL NOTES:

(SPECIAL NOTES CONTINUED)

1. THE STORAGE PLAN SHOWN IN THIS PAGE IS TYPICAL ONLY, AND APPLIES TO NUMEROUS LOTS. ADAPTATIONS MAY BE MADE AS NUMBER AND SIZES OF LOTS TO BE STORED IN MAGAZINE REQUIRE.
2. AN INSPECTION/INVENTORY AISLE NOT LESS THAN 24" WIDE MUST BE PROVIDED AT ONE SIDE OR END OF EACH LOT.
3. GENERALLY, THE LARGEST LOT SHOULD BE STORED IN THE REAR OR ON ONE SIDE OF THE MAGAZINE. HOWEVER, THESE AREAS MAY BE USED TO STORE MORE THAN ONE LOT BY ERECTING STACKS SIMILAR TO THOSE SHOWN IN THE FRONTAL AREA. AN MHE AISLE WILL BE REQUIRED ON ONE SIDE OF THE MAGAZINE, AND EACH LOT MUST BE ACCESSIBLE FOR REMOVAL AND INSPECTION/INVENTORY IN ACCORDANCE WITH OTHER CRITERIA SPECIFIED IN THESE SPECIAL NOTES AND IN THE GENERAL NOTES ON PAGE 2.
4. A MIXED-LOT CONATAINER MAY HAVE TWO LOTS PER CONTAINER. HOWEVER, BOTH LOTS WITHIN THE PALLET UNIT MUST HAVE THE SAME NATIONAL STOCK NUMBER AND CONDITION CODE.
5. EACH LOT WITHIN THE MAGAZINE MUST BE ACCESSIBLE FOR MOVEMENT BY MHE. CONTAINERS OF A SINGE-LOT OR MIXED-LOT CONTAINERS ARE CONSIDERED "ACCESSIBLE" IF NO MORE THAN 24 "LIFTS" OF ANOTHER LOT OR LOTS HAVE TO BE MADE TO GAIN ACCESS TO THE SINGLE-LOT OR MIXED-LOT CONTAINER. A "LIFT" MAY CONSIST OF ONE OR MORE CONTAINERS, PROVIDING THE CAPACITY OF THE MHE PERMITS, AND SAFE HANDLING IS NOT JEOPERDIZED.
6. FOR STORAGE OF MULTIPLE LOTS, THE DISTANCE FROM THE SIDEWALL WILL BE BASED ON THE OVERHEAD CLEARANCE REQUIRED FOR MHE.
7. WHEN TWO LOTS ARE STORED ADJACENT TO EACH OTHER, THEY SHOULD BE SEPARATED BY AT LEAST 1" TO PROVIDE CLEARANCE FOR REMOVAL OF EITHER LOT.
8. THE MHE AISLE MAY BE USED TO STORE ONE OR MORE STACKS OF ADDITIONAL LOTS OR ADDITIONAL UNITS THAT ARE FROM A LOT ADJACENT TO THE MHE AISLE. ADEQUATE SPACE FROM MHE OPERATION MUST BE MADE AVAILABLE FOR THE ADDITIONAL STORAGE. ALSO, COMPLIANCE WITH ALL MULTIPLE-LOT CRITERIA AS SET FORTH ON THIS PAGE MUST BE OBSERVED.

(CONTINUED AT RIGHT)