

LOADING AND BRACING[⊕] IN SIDE OPENING ISO CONTAINERS OF HARPOON MISSILES (AGM-84 OR ATM-84) PACKED IN MK607 MOD 0 CONTAINERS

INDEX

ITEM	PAGE(S)
FOUR UNIT LOAD - - - - -	2
GENERAL NOTES AND MATERIAL SPECIFICATIONS - - - - -	3
CONTAINER DETAILS - - - - -	4
DETAILS - - - - -	4-5
LESS-THAN-FULL-LOAD DETAILS - - - - -	6-7

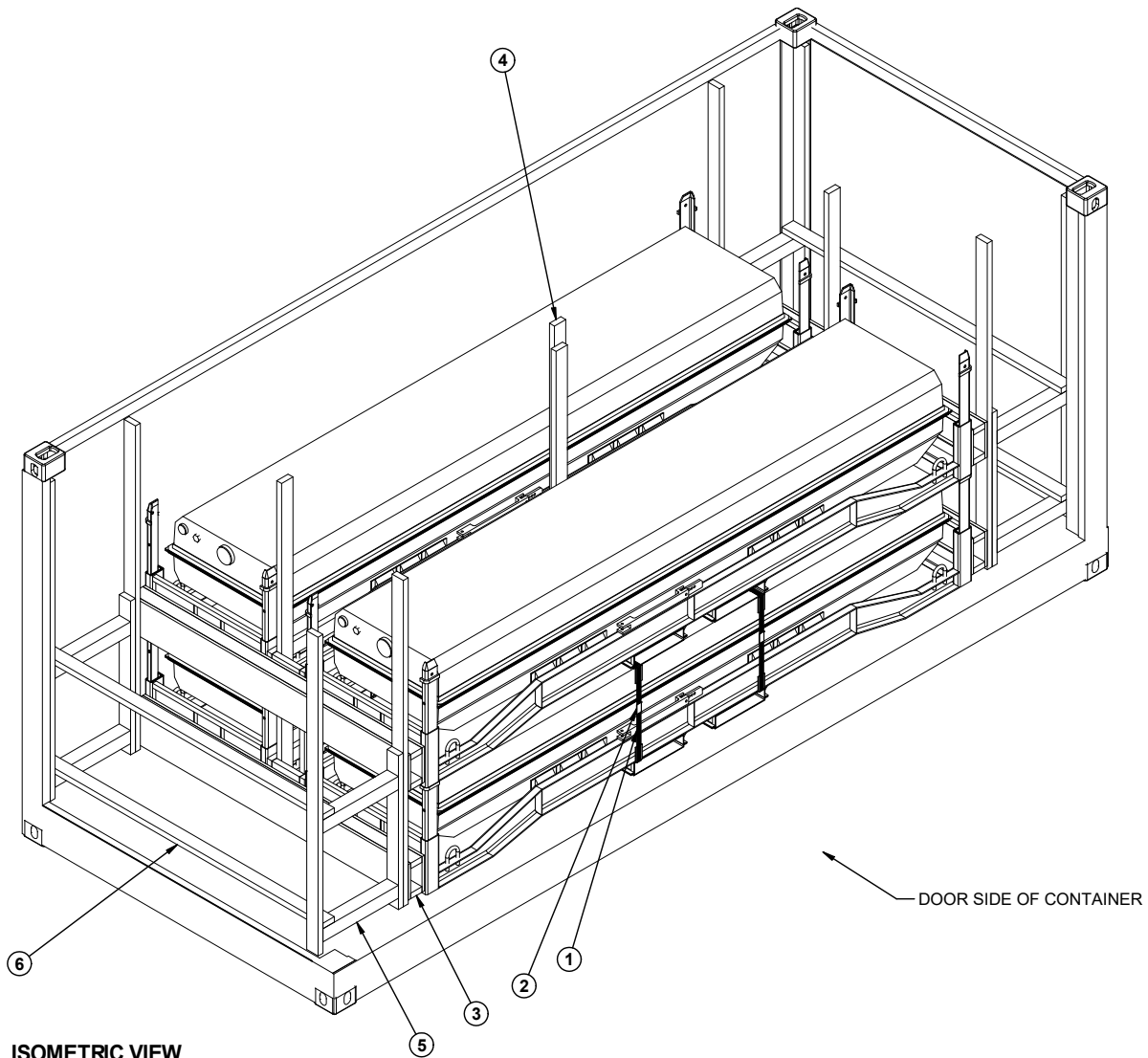
DISTRIBUTION STATEMENT A:

APPROVED FOR PUBLIC RELEASE
DISTRIBUTION IS UNLIMITED.

⊕ THE PROCEDURES SHOWN HEREIN ARE APPLICABLE TO LOADS THAT ARE TO
BE SHIPPED BY TRAILER/CONTAINER-ON-FLATCAR (T/COFC) RAIL, MOTOR, OR
WATER CARRIERS.

U.S. ARMY MATERIEL COMMAND DRAWING

APPROVED, U.S. ARMY JOINT MUNITIONS COMMAND		CAUTION: VERIFY PRIOR TO USE AT https://www.dau.edu/cop/ammo/Pages/Default.aspx THAT THIS IS THE MOST CURRENT VERSION OF THIS DOCUMENT. THIS IS PAGE 1 OF 8.							
WARD.GINA. M.1369379808	Digitally signed by WARD.GINA.M.1369379808 Date: 2021.01.26 12:07:12 -06'00'	DO NOT SCALE		JANUARY 2021					
		DESIGN ENGINEER	BASIC REV.			RICHARD GARSIDE			
APPROVED BY ORDER OF COMMANDING GENERAL, U.S. ARMY MATERIEL COMMAND		ENGINEERING DIVISON	FIEFFER.LAUR A.A.1230375727	Digitally signed by FIEFFER.LAURA.A.1230375727 Date: 2021.01.13 08:30:20 -06'00'					
SMITH.THERESA. ANN.1009147639	Digitally signed by SMITH.THERESA.ANN.1009147 639 Date: 2021.01.26 15:50:36 -06'00'	TEST ENGINEER	FELICIANO.AD IN.1259200373	Digitally signed by FELICIANO.AD.IN.1259200373 Date: 2021.01.22 06:15:55 -06'00'					
		TEST REPORT	NA		CLASS	DIVISION	DRAWING	FILE	
U.S. ARMY DEFENSE AMMUNITION CENTER		EXPLOSIVE SAFETY DIRECTORATE	BRAILSFORD.KEIT H.ANTHONY.10286 55661	Digitally signed by BRAILSFORD.KEITH.ANTHONY. 1028655661 Date: 2021.01.22 08:13:31 -06'00'		19	48	8657	SP15J93



ISOMETRIC VIEW

KEY NUMBERS

- ① UNITIZING STRAP, 1-1/4" X .031" OR .035" X 11'-2" (4 REQD). INSTALL STRAPPING THROUGH THE FORK POCKETS OF THE TOP AND BOTTOM CONTAINERS AS SHOWN, AS FAR APART AS POSSIBLE.
- ② SEAL FOR 1-1/4" STRAPPING (4 REQD, 1 PER STRAP). CRIMP EACH SEAL WITH TWO PAIR OF NOTCHES.
- ③ END BLOCKING ASSEMBLY (2 REQD). SEE DETAIL ON PAGE 5.
- ④ CENTER FILL ASSEMBLY (2 REQD). SEE DETAIL ON PAGE 4.
- ⑤ STRUT ASSEMBLY (4 REQD). NAIL THROUGH THE VERTICAL PIECE INTO THE END BLOCKING ASSEMBLY W/5-10d NAILS. SEE DETAIL ON PAGE 5.
- ⑥ SPREADER PIECE, 2" X 4" X 7'-2" (4 REQD). NAIL TO THE STRUTS W/2-10d NAILS AT EACH END.

BILL OF MATERIAL

LUMBER	LINEAR FEET	BOARD FEET
2" X 4"	328	219
4" X 4"	16	21
NAI LS	NO. REQD	POUNDS
6d (2")	176	1
10d (3")	224	3-1/2
PLYWOOD, 3/4" - - - -	45.4 SQ FT REQD - - - -	93.6 LBS
STEEL STRAPPING, 1-1/4" - -	45' REQD - - - -	6.4 LBS
SEAL FOR 1-1/4" STRAPPING - -	4 REQD - - - -	0.18 LBS
ANTI-CHAFING MATERIAL - - - -	AS REQD - - - -	NIL

LOAD AS SHOWN

ITEM	QUANTITY	WEIGHT (APPROX)
MK607 - - - - -	4 - - - - -	13,556 LBS
DUNNAGE - - - - -	- - - - -	584 LBS
CONTAINER - - - - -	- - - - -	6,050 LBS
TOTAL WEIGHT - - - - -		20,190 LBS

GENERAL NOTES

- A. THIS DOCUMENT HAS BEEN PREPARED AND ISSUED IN ACCORDANCE WITH AR 740-1 AND AUGMENTS TM 743-200-1 (CHAPTER 5).
- B. THE SPECIFIED OUTLOADING PROCEDURES ARE APPLICABLE TO LOADS OF HARPOON MISSILES PACKED IN MK607 MOD 0 CONTAINERS. SUBSEQUENT REFERENCE TO CONTAINER HEREIN MEANS CONTAINER WITH MISSILE INSTALLED. SEE PAGE 4 AND NAVAL SEA SYSTEMS COMMAND DRAWING DL2645309 FOR DETAILS OF THE CONTAINER. **CAUTION:** REGARDLESS OF THE QUANTITY OF CONTAINERS TO BE SHIPPED, THE "MAXIMUM GROSS WEIGHT" OF THE SIDE OPENING ISO CONTAINER MUST NOT BE EXCEEDED.
- C. THE LOAD AS SHOWN IS BASED ON A 6,050 POUND 20' LONG BY 8' WIDE BY 8'-6" HIGH SIDE OPENING ISO CONTAINER WITH INSIDE DIMENSIONS OF 19'-5-1/4" LONG BY 89-3/4" WIDE BY 88" HIGH AND A MAXIMUM GROSS WEIGHT OF 52,910 POUNDS. OLDER/OTHER CONTAINERS MAY HAVE DIFFERENT INSIDE MEASUREMENTS, VERIFY INSIDE CONTAINER DIMENSIONS PRIOR TO FABRICATING DUNNAGE. THE LOAD IS DESIGNED FOR TRAILER/CONTAINER-ON-FLATCAR (T/COFC) SHIPMENT. HOWEVER, THE LOAD AS DESIGNED CAN ALSO BE MOVED BY OTHER SURFACE MODES OF TRANSPORT. **NOTICE:** OTHER CONTAINERS OF THE SAME DESIGN CONFIGURATION CAN BE USED.
- D. WHEN LOADING CONTAINERS, THEY ARE TO BE POSITIONED SO AS TO ACHIEVE A TIGHT LOAD (TIGHT AGAINST THE DUNNAGE ASSEMBLIES), THE UNBLOCKED SPACE ACROSS THE WIDTH OF A LOAD BAY IS NOT TO EXCEED 1-1/2". EXCESSIVE SLACK CAN BE ELIMINATED FROM A LOAD BY LAMINATING ADDITIONAL PIECES OF APPROPRIATE THICKNESS TO THE HORIZONTAL PIECES ON THE CENTER BLOCKING ASSEMBLIES. NAIL EACH ADDITIONAL PIECE W/1 APPROPRIATELY SIZED NAIL EVERY 12". ADDITIONALLY, THE LENGTH OF THE STRUTS IN THE CENTER BLOCKING ASSEMBLIES MAY BE ADJUSTED AS REQUIRED TO FACILITATE VARIANCE IN THE SIZE OF THE CONTAINERS. THE LOADS MUST BE AS TIGHT AS POSSIBLE LONGITUDINALLY, BUT THE VOID MUST NOT EXCEED 3/4" OVERALL. THE STRUTS AT ONE END OF CONTAINER WILL BE CUT-TO-FIT AFTER LOADING TO ENSURE A TIGHT LOAD.
- E. DUNNAGE LUMBER SPECIFIED IS OF NOMINAL SIZE. FOR EXAMPLE, 1" X 4" MATERIAL IS ACTUALLY 3/4" THICK BY 3-1/2" WIDE AND 2" X 6" MATERIAL IS ACTUALLY 1-1/2" THICK BY 5-1/2" WIDE.
- F. A STAGGERED NAILING PATTERN WILL BE USED WHENEVER POSSIBLE WHEN NAILS ARE DRIVEN INTO JOINTS OF DUNNAGE ASSEMBLIES OR WHEN LAMINATING DUNNAGE. ADDITIONALLY, THE NAILING PATTERN FOR AN UPPER PIECE OF LAMINATED DUNNAGE WILL BE ADJUSTED AS REQUIRED SO THAT A NAIL FOR THAT PIECE WILL NOT BE DRIVEN THROUGH, ON TO, OR RIGHT BESIDE A NAIL IN A LOWER PIECE.
- G. IN SOME ISO CONTAINERS THERE IS A SLOT AT THE CORNERS OF THE ENDWALLS. PIECES OF DUNNAGE MATERIAL MUST BE LAMINATED TO THE BUFFER PIECES OF THE STRUT ASSEMBLIES TO PROVIDE A FLAT SURFACE. A PIECE OF 2" X 4", 2" X 3" OR A SPECIAL WIDTH PIECE CUT-TO-FIT CAN BE USED. THIS FILL PIECE WILL BE NAILED WITH ONE APPROPRIATELY SIZED NAIL EVERY 12". NOTE THAT SOME CONTAINERS ARE EQUIPPED WITH "TIE-BARS" IN THE CORNER SLOT, WHICH PRECLUDE THE USE OF A FULL HEIGHT FILL PIECE. WHEN "TIE-BARS" ARE PRESENT, THE FILL PIECE MUST BE INSTALLED IN SEGMENTS DESIGNED TO FIT BETWEEN THE "TIE-BARS" VERTICALLY. THE FILL PIECE(S) IS NOT REQUIRED WHEN THE CORNER PORTIONS OF THE CONTAINER ENDWALLS ARE SMOOTH AND FLAT. DO NOT ALLOW ANY DUNNAGE ASSEMBLY TO CONTACT THE CONTAINER ENDWALLS. ONLY THE CORNER POSTS OF THE CONTAINER SHOULD BE USED FOR ENDWALL LONGITUDINAL BLOCKING.
- H. WHETHER AN ISO CONTAINER IS FULL OR IS LOADED WITH A REDUCED QUANTITY OF LADING UNITS, THE LENGTHWISE CENTER OF GRAVITY OF THE LOAD MUST BE WITHIN 12", IN EITHER DIRECTION, OF THE MID-POINT OF THE CONTAINER.
- J. **CAUTION:** DO NOT NAIL DUNNAGE MATERIAL TO THE ISO CONTAINER WALLS OR FLOOR. ALL NAILING WILL BE WITHIN THE DUNNAGE.
- K. PORTIONS OF THE ISO CONTAINER DEPICTED WITHIN THIS DRAWING, SUCH AS THE SIDEWALL, HAVE NOT BEEN SHOWN IN THE LOAD VIEWS FOR CLARITY PURPOSES.
- L. **MAXIMUM LOAD WEIGHT CRITERIA:**
- THE MAXIMUM LOAD WEIGHTS ARE CONTROLLED BY EQUIPMENT CAPABILITY FACTORS. ALTHOUGH THE HEAVIEST MAXIMUM LOAD IS DELINEATED IN THE LOAD VIEW, PROVISIONS ARE INCLUDED WITHIN THIS DRAWING SO THAT THE BASIC LOAD CAN BE ADJUSTED TO SATISFY A LESSER QUANTITY OF LADING UNITS. DEPENDING ON TRANSPORTATION ROUTING, IT MAY BE NECESSARY TO REDUCE THE LOAD WEIGHT TO SATISFY "WEIGHT LAWS" OF CERTAIN STATES. ALSO, IT MAY BE NECESSARY TO REDUCE THE LOAD WEIGHT TO SATISFY OTHER WEIGHT RESTRICTIONS IMPOSED ON THE INTERMODAL CONTAINER SYSTEM.
- M. REQUIREMENTS CITED WITHIN THE ASSOCIATION OF AMERICAN RAILROADS (AAR) INTERMODAL LOADING GUIDE APPLY WHEN THE SHIPMENT MOVES BY TRAILER/CONTAINER-ON-FLATCAR (T/COFC). SPECIAL T/COFC NOTES FOLLOW:
1. A LOADED CONTAINER MUST BE ON A CHASSIS EQUIPPED WITH TWO BOGIE ASSEMBLIES WHEN BEING MOVED IN TOFC SERVICE.
 2. THE LOAD LIMIT OF A T/COFC RAILCAR MUST NOT BE EXCEEDED, NOR WILL A CAR BE LOADED SO THAT THE TRUCK UNDER ONE END OF THE CAR CARRIES MORE THAN ONE-HALF OF THE LOAD LIMIT FOR THAT CAR.

(CONTINUED AT RIGHT)

GENERAL NOTES CONTINUED

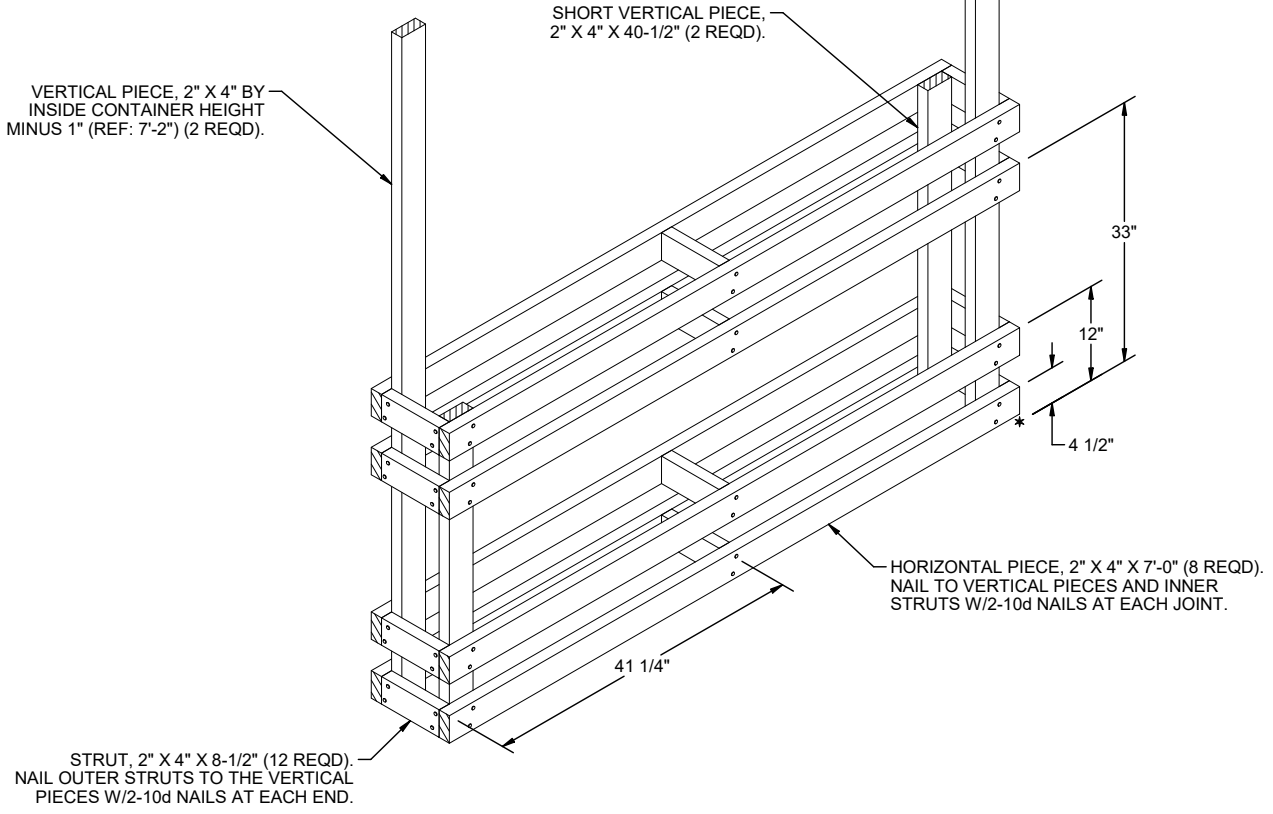
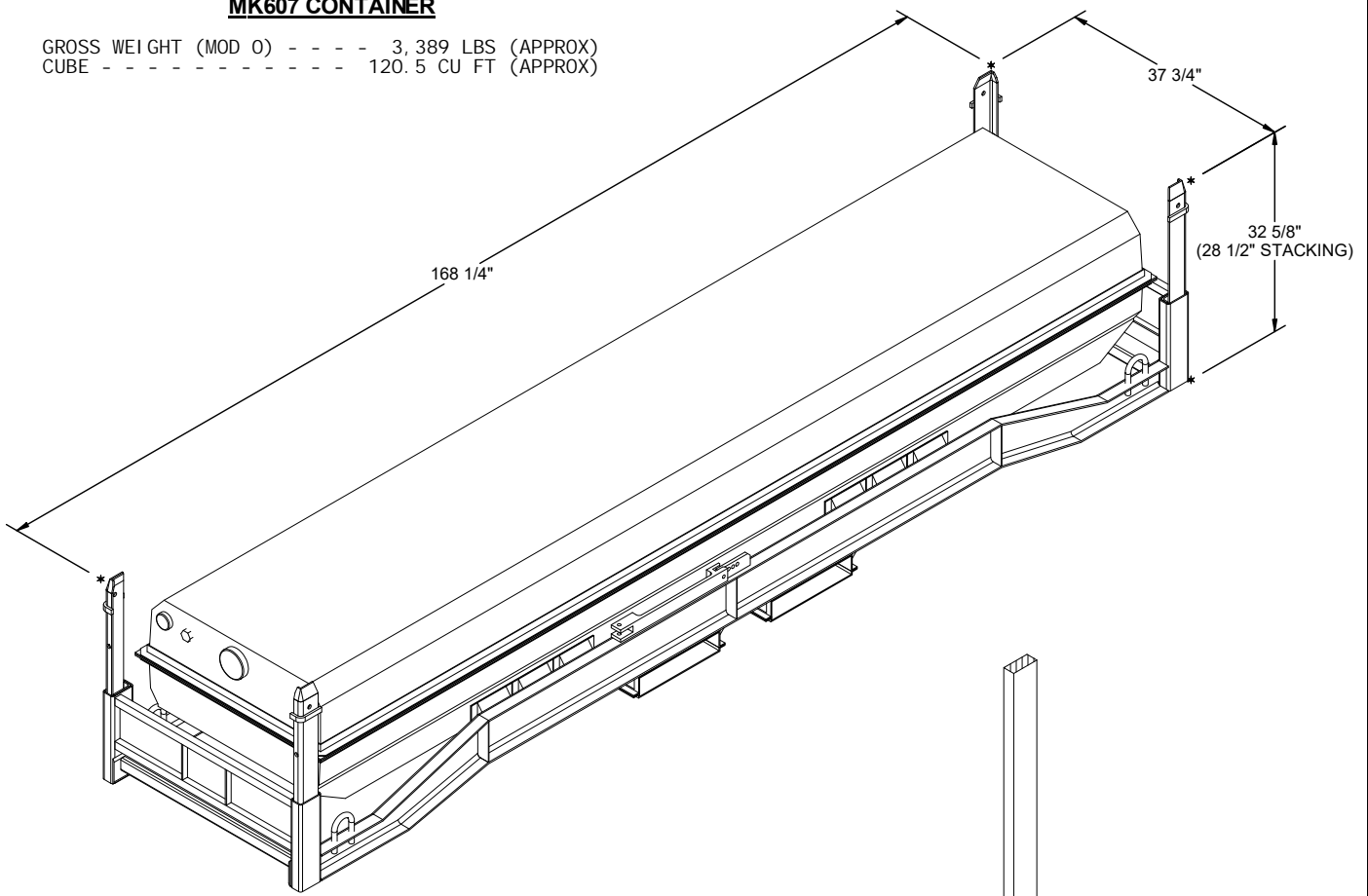
- N. DURING INTRASTATE AND/OR INTERSTATE MOVES BY MOTOR CARRIER, A PROPER CHASSIS OR MODIFIED FLATBED TRAILER MUST BE USED TO PRECLUDE VIOLATION OF ONE OR MORE "WEIGHT LAWS" APPLICABLE TO THE STATE OR STATES INVOLVED.
- O. CONVERSION TO METRIC EQUIVALENTS: DIMENSIONS WITHIN THIS DOCUMENT ARE EXPRESSED IN INCHES AND WEIGHTS ARE EXPRESSED IN POUNDS. WHEN NECESSARY, THE METRIC EQUIVALENTS MAY BE COMPUTED ON THE BASIS OF ONE INCH EQUALS 25.4MM AND ONE POUND EQUALS 0.454 KG.
- P. THE QUANTITY OF CONTAINERS SHOWN IN THE LOAD ON PAGE 3 MAY BE REDUCED FOR SHIPMENT, IF DESIRED. SEE THE DETAILS ON PAGES 6 AND 7.
- Q. ANTI-CHAFING MATERIAL MAY BE INSTALLED AT POINTS OF CONTACT BETWEEN CONTAINERS AND THE SIDE OPENING CONTAINER, AND BETWEEN CONTAINERS AND STEEL STRAPPING, IF DESIRED, TO PREVENT CHAFING DAMAGE TO CONTAINER PAINT AND MARKINGS.
- R. RECOMMENDED SEQUENTIAL LOADING PROCEDURES:
1. PREFABRICATE TWO END BLOCKING ASSEMBLIES, TWO CENTER FILL ASSEMBLIES, AND FOUR STRUT ASSEMBLIES.
 2. INSTALL THE BLOCKING FOR ONE END OF CONTAINER (USE REFERENCE DIMENSION FOR STRUTS).
 3. LOAD TWO UNITIZED DOUBLE-STACKED CONTAINERS TIGHT AGAINST BACK WALL.
 4. INSTALL THE BLOCKING FOR THE OTHER END WHILE INSIDE CONTAINER, WITH STRUTS CUT-TO-FIT.
 5. INSTALL TWO CENTER FILL ASSEMBLIES TIGHT AGAINST THE DOUBLE-STACKED CONTAINERS.
 6. LOAD LAST TWO UNITIZED DOUBLE-STACKED CONTAINERS TIGHT AGAINST THE CENTER FILL ASSEMBLIES.

MATERIAL SPECIFICATIONS

- LUMBER - - - - - : SEE TM 743-200-1 (DUNNAGE LUMBER) AND VOLUNTARY PRODUCT STANDARD PS 20.
- NAILS - - - - - : ASTM F1667; COMMON STEEL NAIL NLCMS OR NLCMMS).
- PLYWOOD - - - - - : COMMERCIAL ITEM DESCRIPTION A-A-55057, INDUSTRIAL PLYWOOD, INTERIOR WITH EXTERIOR GLUE, GRADE C-D. IF SPECIFIED GRADE IS NOT AVAILABLE, A BETTER INTERIOR OR AN EXTERIOR GRADE MAY BE SUBSTITUTED.
- STRAPPING, STEEL - - : ASTM D3953; FLAT STRAPPING, TYPE 1, HEAVY DUTY, FINISH A, B (GRADE 2), OR C.
- SEAL, STRAP - - - - : ASTM D3953; CLASS H, FINISH A, B (GRADE 2), OR C, DOUBLE NOTCH TYPE, STYLE I, II, OR IV.
- WIRE, CARBON STEEL - : ASTM A853; ANNEALED AT FINISH, BLACK OXIDE FINISH, 0.0800" DIA, GRADE 1006 OR BETTER.
- ANTI-CHAFING MATERIAL - - - - - : MIL-PRF-121 (OR EQUAL); NEUTRAL BARRIER MATERIAL.

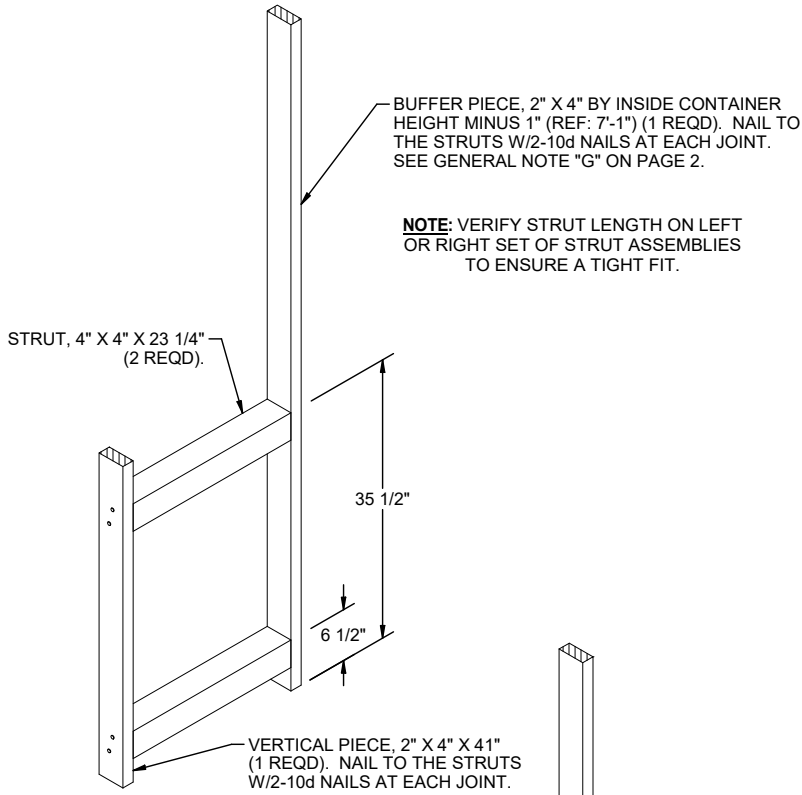
MK607 CONTAINER

GROSS WEIGHT (MOD 0) - - - - 3,389 LBS (APPROX)
 CUBE - - - - - 120.5 CU FT (APPROX)



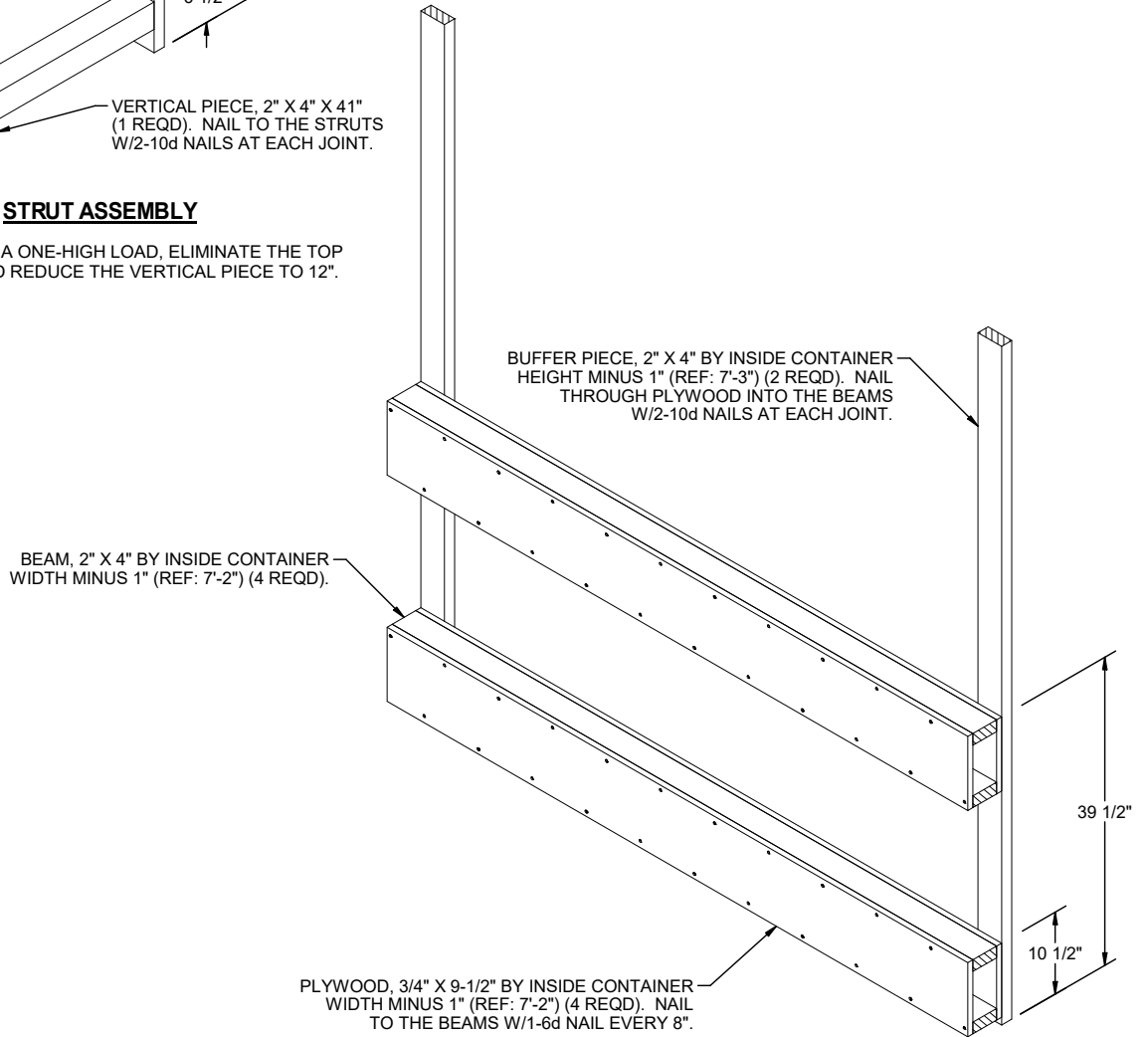
CENTER FILL ASSEMBLY

NOTE: FOR A ONE-HIGH LOAD, ELIMINATE THE TOP FOUR HORIZONTAL PIECES
 AND TOP SIX STRUTS AND MAKE THE SHORT VERTICAL PIECE 13" LONG.



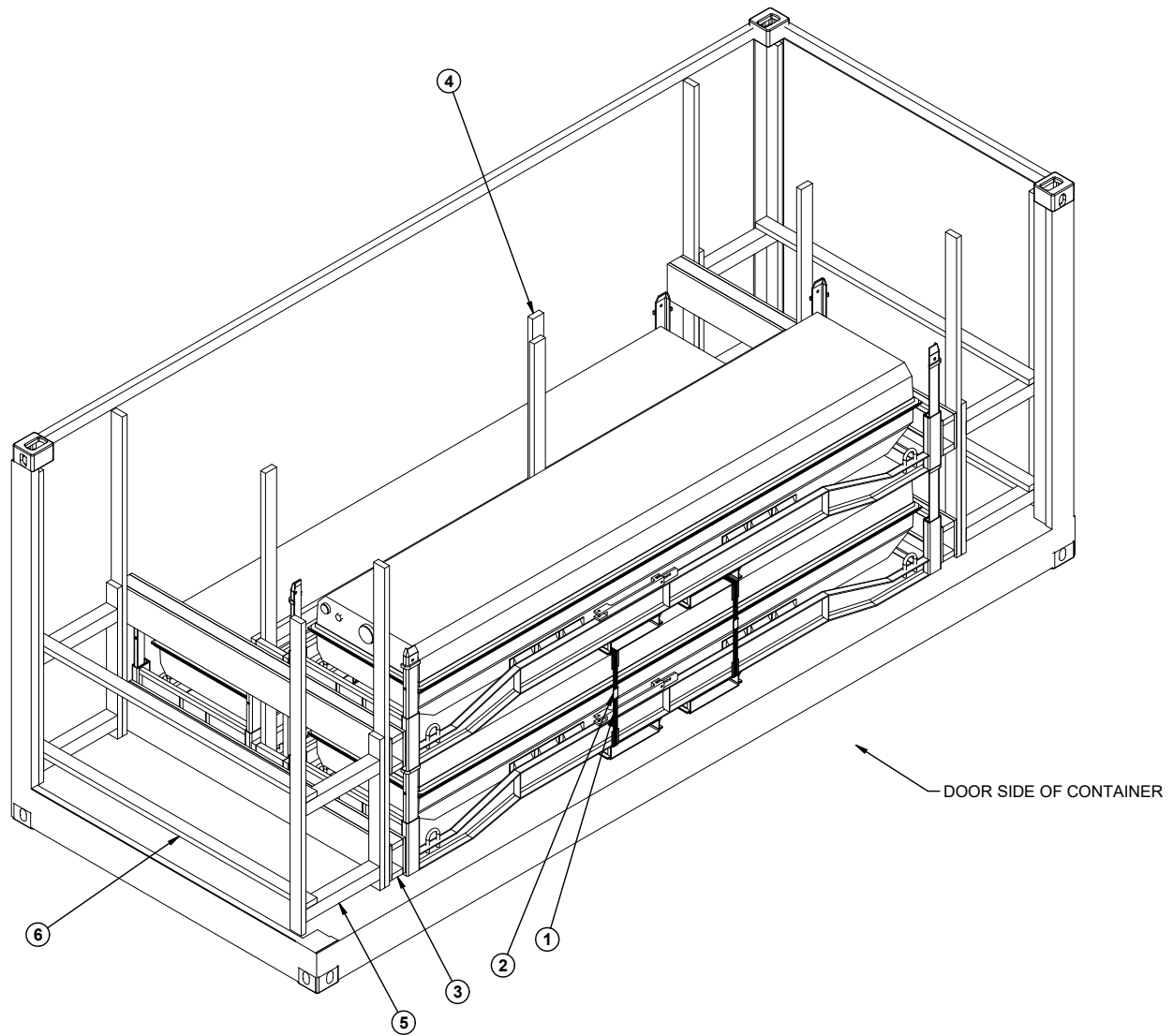
STRUT ASSEMBLY

NOTE: FOR A ONE-HIGH LOAD, ELIMINATE THE TOP STRUT AND REDUCE THE VERTICAL PIECE TO 12".



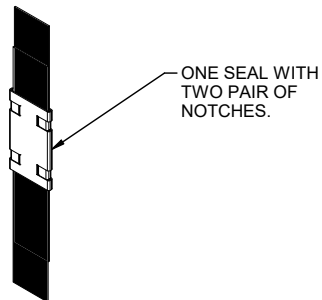
END BLOCKING ASSEMBLY

NOTE: FOR A ONE-HIGH LOAD, ELIMINATE THE TOP BOX BEAM ASSEMBLY.



LESS-THAN-FULL-LOAD PROCEDURE

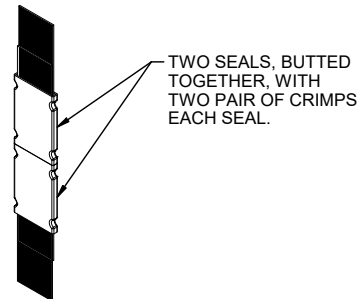
KEY NUMBERS REFER TO KEY NUMBERS ON PAGE 2.



ONE SEAL WITH TWO PAIR OF NOTCHES.

STRAP JOINT A

METHOD OF SECURING A STRAP JOINT WHEN USING A NOTCH-TYPE SEALER.

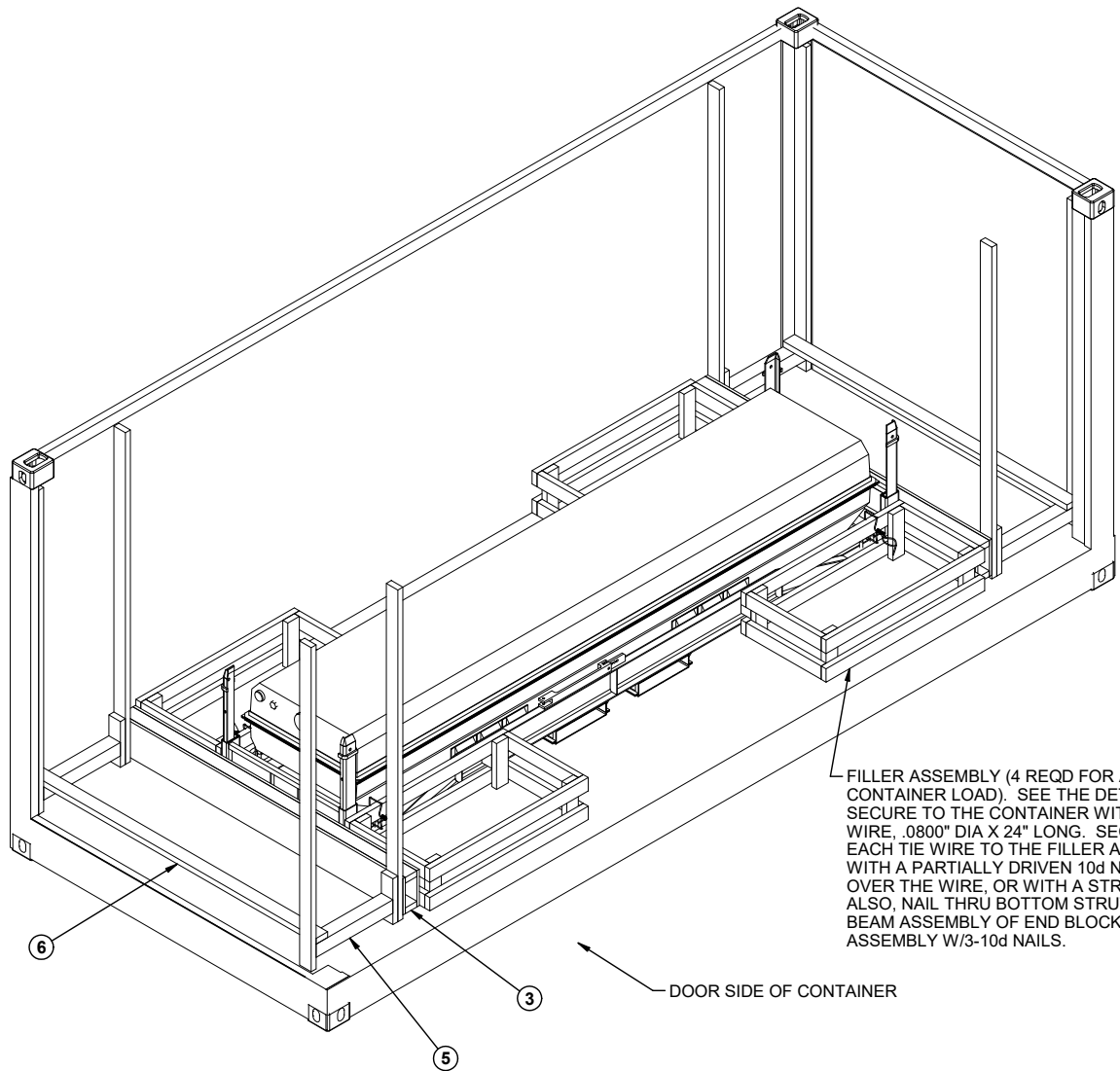


TWO SEALS, BUTTED TOGETHER, WITH TWO PAIR OF CRIMPS EACH SEAL.

STRAP JOINT B

METHOD OF SECURING A STRAP JOINT WHEN USING A CRIMP-TYPE SEALER.

END-OVER-END LAP JOINT DETAILS



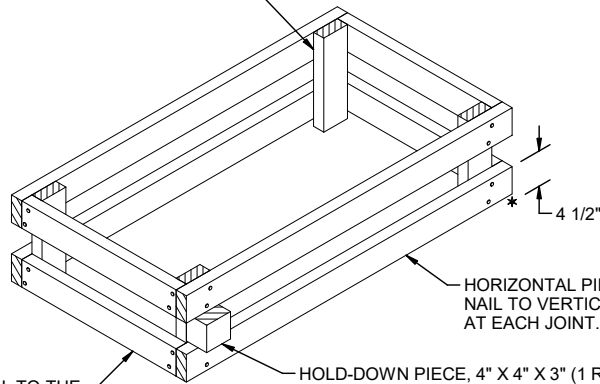
FILLER ASSEMBLY (4 REQD FOR A SINGLE CONTAINER LOAD). SEE THE DETAIL BELOW. SECURE TO THE CONTAINER WITH ONE TIE WIRE, .0800" DIA X 24" LONG. SECURE EACH TIE WIRE TO THE FILLER ASSEMBLY WITH A PARTIALLY DRIVEN 10d NAIL BENT OVER THE WIRE, OR WITH A STRAP STAPLE. ALSO, NAIL THRU BOTTOM STRUT INTO BEAM ASSEMBLY OF END BLOCKING ASSEMBLY W/3-10d NAILS.

DOOR SIDE OF CONTAINER

LESS-THAN-FULL-LOAD PROCEDURE

KEY NUMBERS REFER TO KEY NUMBERS ON PAGE 2.

VERTICAL PIECE, 2" X 4" X 12" (4 REQD).



HORIZONTAL PIECE, 2" X 4" X 48" (4 REQD). NAIL TO VERTICAL PIECES W/2-10d NAILS AT EACH JOINT.

STRUT, 2" X 4" X 22 3/4" (4 REQD). NAIL TO THE VERTICAL PIECES W/2-10d NAILS AT EACH END.

HOLD-DOWN PIECE, 4" X 4" X 3" (1 REQD). NAIL THRU THE VERTICAL PIECE INTO THE HOLD-DOWN PIECE W/2-10d NAILS. THIS PIECE WILL BE INSTALLED UNDER THE CONTAINER EDGE, TOWARD THE CENTER OF THE CONTAINER. THE LOAD DEPICTED ABOVE WILL REQUIRE TWO ASSEMBLIES WITH THE HOLD-DOWN PIECE ALIGNED TOWARD THE RIGHT, AND TWO WITH THE PIECE ALIGNED TOWARD THE LEFT.

FILLER ASSEMBLY

