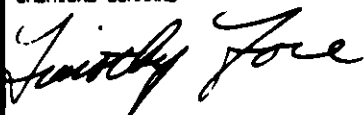
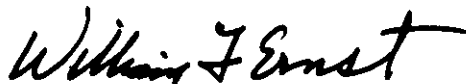




# LOADING AND BRACING WITH WOODEN DUNNAGE IN END OPENING ISO CONTAINERS OF AIR INFLATABLE RETARDER, BSU-49/B PACKED IN THE CNU-335/E OR CNU-335A/E CONTAINER, AND BSU-50/B PACKED IN THE CNU-336/E OR CNU-336A/E CONTAINER

## INDEX

ITEM	PAGE(S)
GENERAL NOTES AND MATERIAL SPECIFICATIONS	2
CONTAINER DETAILS	3
CNU-335A/E AND/OR CNU-336A/E CONTAINER LOAD	4,5
CNU-335/E AND/OR CNU-336/E CONTAINER LOAD	6,7
LESS-THAN-FULL-LOAD DETAILS	8,9
DETAILS	10-12

LOADING AND BRACING SPECIFICATIONS SET FORTH WITHIN THIS DRAWING ARE APPLICABLE TO LOADS THAT ARE TO BE SHIPPED BY TRAILER/CONTAINER-ON-FLATCAR (T/COFC) RAIL CARRIER SERVICE. THESE SPECIFICATIONS MAY ALSO BE USED FOR LOADS THAT ARE TO BE MOVED BY MOTOR OR WATER CARRIERS.

U.S. ARMY MATERIEL COMMAND DRAWING			
APPROVED, U.S. ARMY ARMAMENT, MUNITIONS AND CHEMICAL COMMAND 	DRAFTSMAN	TECHNICIAN	ENGINEER L. FIEFFER
	APPROVED BY ORDER OF COMMANDING GENERAL, U.S. ARMY MATERIEL COMMAND 	VALIDATION ENGINEERING DIVISION 	TRANSPORTATION ENGINEERING DIVISION 
NOVEMBER 1993			
	CLASS	DIVISION	DRAWING
	19	48	8538
			FILE
			SP15J36

DO NOT SCALE

## GENERAL NOTES

- A. THIS DOCUMENT HAS BEEN PREPARED AND ISSUED IN ACCORDANCE WITH AR 740-1 AND AUGMENTS TM 743-200-1 (CHAPTER 5).
- B. THE SPECIFIED OUTLOADING PROCEDURES ARE APPLICABLE TO LOADS OF AIR INFLATABLE RETARDER, BSU-49/B PACKED IN THE CNU-335A/E OR CNU-335A/E CONTAINER OR BSU-50/B PACKED IN THE CNU-336A/E CONTAINER OR CNU-336A/E CONTAINER. SUBSEQUENT REFERENCE TO CONTAINER HEREIN MEANS THE CONTAINER WITH AIR INFLATABLE RETARDER. SEE PAGE 3 FOR DETAILS OF THE CONTAINERS. CAUTION: REGARDLESS OF THE QUANTITY OF THE CONTAINERS TO BE SHIPPED, THE "MAXIMUM GROSS WEIGHT" OF THE END OPENING ISO CONTAINER MUST NOT BE EXCEEDED.
- C. THE LOAD AS SHOWN IS BASED ON A 4,700 POUND 20' LONG BY 8' WIDE BY 8'-8" HIGH END OPENING ISO CONTAINER WITH INSIDE DIMENSIONS OF 18'-4" LONG BY 62" WIDE BY 65" (63" CLEAR HEIGHT) AND A MAXIMUM GROSS WEIGHT OF 52,010 POUNDS. THE LOAD IS DESIGNED FOR TRAILER/CONTAINER-ON-FLATCAR (T/COFC) SHIPMENT, HOWEVER, THE LOAD AS DESIGNED CAN ALSO BE MOVED BY OTHER SURFACE MODES OF TRANSPORT. NOTICE: OTHER CONTAINERS OF THE SAME DESIGN CONFIGURATION CAN BE USED.
- D. WHEN LOADING CONTAINERS, THEY ARE TO BE POSITIONED SO AS TO ACHIEVE A TIGHT LOAD (TIGHT AGAINST THE DUNNAGE ASSEMBLIES). ALTHOUGH A TOTAL OF 1-1/2" OF UNBLOCKED SPACE ACROSS THE WIDTH OF A LOAD BAY IS PERMITTED, LATERAL VOIDS WITHIN THE LOAD ARE TO BE HELD TO A MINIMUM. EXCESSIVE SLACK CAN BE ELIMINATED FROM A LOAD BY LAMINATING ADDITIONAL PIECES OF APPROPRIATE THICKNESS TO THE LONGITUDINAL PIECES ON THE CENTER FILL ASSEMBLIES OR THE HORIZONTAL PIECES ON THE SIDE FILL ASSEMBLIES. NAIL EACH ADDITIONAL PIECE W/1 APPROPRIATELY SIZED NAIL EVERY 12". ADDITIONALLY, THE LENGTH OF THE LATERAL PIECES IN THE CENTER FILL ASSEMBLIES OR THE THICKNESS AND/OR QUANTITY THE VERTICAL OR HORIZONTAL PIECES IN THE SIDE FILL ASSEMBLIES MAY BE ADJUSTED AS REQUIRED TO FACILITATE VARIANCE IN THE CONTAINER SIZE.
- E. DUNNAGE LUMBER SPECIFIED IS OF NOMINAL SIZE. FOR EXAMPLE, 1" X 4" MATERIAL IS ACTUALLY 3/4" THICK BY 3-1/2" WIDE AND 2" X 8" MATERIAL IS ACTUALLY 1-1/2" THICK BY 5-1/2" WIDE.
- F. A STAGGERED NAILING PATTERN WILL BE USED WHENEVER POSSIBLE WHEN NAILS ARE DRIVEN INTO JOINTS OF DUNNAGE ASSEMBLIES OR WHEN LAMINATING DUNNAGE. ADDITIONALLY, THE NAILING PATTERN FOR AN UPPER PIECE OF LAMINATED DUNNAGE WILL BE ADJUSTED AS REQUIRED SO THAT A NAIL FOR THAT PIECE WILL NOT BE DRIVEN THROUGH ONTO OR RIGHT BESIDE A NAIL IN A LOWER PIECE.

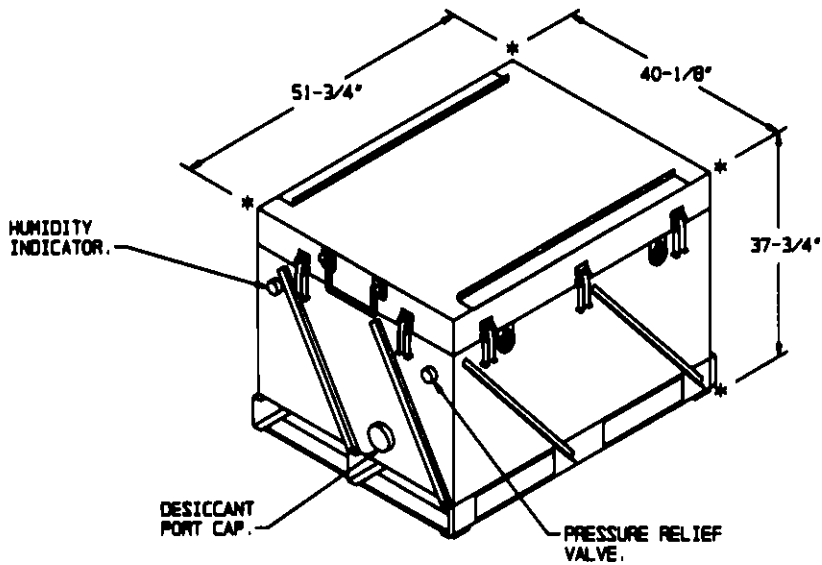
(CONTINUED AT RIGHT)

## MATERIAL SPECIFICATIONS

LUMBER	SEE TM 743-200-1 (DUNNAGE LUMBER) AND FED SPEC MH-L-751.
NAILS	FED SPEC FF-N-105; COMMON.
PLYWOOD	COMMERCIAL ITEM DESCRIPTION A-A-55057, TYPE A, CONSTRUCTION AND INDUSTRIAL PLYWOOD, INTERIOR WITH EXTERIOR GLUE, GRADE C-D. IF SPECIFIED GRADE IS NOT AVAILABLE, A BETTER INTERIOR OR AN EXTERIOR GRADE MAY BE SUBSTITUTED.
STRAPPING, STEEL	ASTM D3953; FLAT STRAPPING, TYPE 1, HEAVY DUTY, FINISH A, B (GRADE 2), OR C.
SEAL, STRAP	ASTM D3953; CLASS H, FINISH A, B (GRADE 2), OR C, DOUBLE NOTCH TYPE, STYLE I, II, OR IV.
WIRE, CARBON STEEL	ASTM A853; ANNEALED AT FINISH, BLACK OXIDE FINISH, .0800" DIA, GRADE 1008 OR BETTER.
STAPLE, STRAP	COMMERCIAL GRADE.
STEEL, STRUCTURAL	ASTM A501, STEEL STRUCTURAL TUBING; AND ASTM A570, STEEL, STRIP, HOT-ROLLED, GRADE 36 (MINIMUM).
ANTI-CHAFING MATERIAL	MIL-B-121 (OR EQUAL); NEUTRAL BARRIER MATERIAL.

## (GENERAL NOTES CONTINUED)

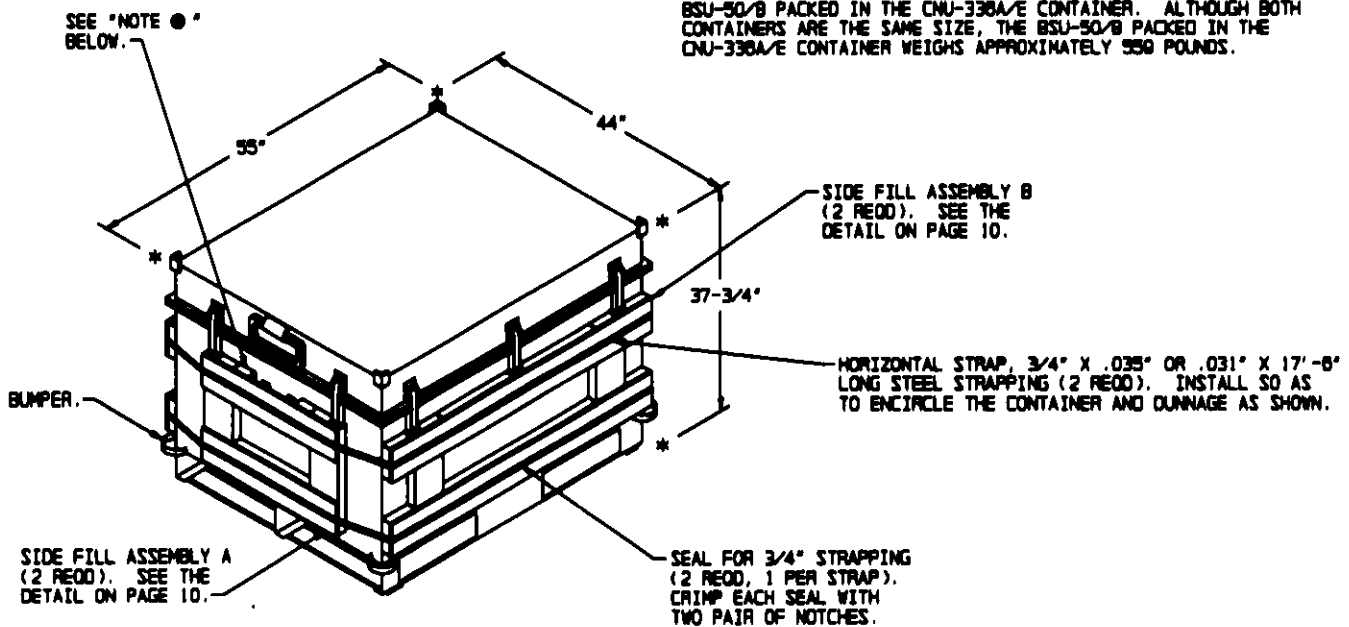
- G. IN SOME CONTAINERS THERE IS A SLOT AT THE CORNERS OF THE FORWARD WALL. PIECES OF DUNNAGE MATERIAL MUST BE LAMINATED TO THE BUFFER PIECES ON THE FORWARD BLOCKING ASSEMBLY TO PROVIDE A FLAT SURFACE FOR THE BUFFER PIECES. A PIECE OF 2" X 4", 2" X 3" OR A SPECIAL WIDTH PIECE CUT-TO-FIT CAN BE USED. THIS FILL PIECE WILL BE NAILED WITH ONE APPROPRIATELY SIZED NAIL EVERY 12". THIS PIECE IS NOT REQUIRED WHEN THE CORNER PORTIONS OF THE CONTAINER FORWARD WALL ARE SMOOTH AND FLAT.
- H. CAUTION: DO NOT NAIL DUNNAGE MATERIAL TO THE CONTAINER WALLS OR FLOOR. ALL NAILING WILL BE WITHIN THE DUNNAGE.
- J. PORTIONS OF THE CONTAINER DEPICTED WITHIN THIS DRAWING, SUCH AS THE SIDEWALL, HAVE NOT BEEN SHOWN IN THE LOAD VIEWS FOR CLARITY PURPOSES.
- K. REQUIREMENTS CITED WITHIN THE BUREAU OF EXPLOSIVES PAMPHLET BC APPLY WHEN THE SHIPMENT MOVES BY TRAILER/CONTAINER-ON-FLATCAR (T/COFC). SPECIAL T/COFC NOTES FOLLOW:
1. A LOADED CONTAINER MUST BE ON A CHASSIS EQUIPPED WITH TWO BOGIE ASSEMBLIES WHEN BEING MOVED IN TOFF SERVICE.
  2. THE LOAD LIMIT OF A T/COFC RAILCAR MUST NOT BE EXCEEDED, NOR WILL A CAR BE LOADED SO THAT THE TRUCK UNDER ONE END OF THE CAR CARRIES MORE THAN ONE-HALF OF THE LOAD LIMIT FOR THAT CAR.
- L. DURING INTRASTATE AND/OR INTERSTATE MOVES BY MOTOR CARRIER, A PROPER CHASSIS OR MODIFIED FLATBED TRAILER MUST BE USED TO PRECLUDE VIOLATION OF ONE OR MORE "WEIGHT LAWS" APPLICABLE TO THE STATE OR STATES INVOLVED.
- M. CONVERSION TO METRIC EQUIVALENTS: DIMENSIONS WITHIN THIS DOCUMENT ARE EXPRESSED IN INCHES AND WEIGHTS ARE EXPRESSED IN POUNDS. WHEN NECESSARY, THE METRIC EQUIVALENTS MAY BE COMPUTED ON THE BASIS OF ONE INCH EQUALS 25.4MM AND ONE POUND EQUALS 0.454 KG.
- N. THE QUANTITY OF CONTAINERS SHOWN IN THE LOADS ON PAGE 4 AND PAGE 8 MAY BE REDUCED FOR SHIPMENT, IF DESIRED. SEE THE "LESS-THAN-FULL-LOAD" PROCEDURE ON PAGE 8. WHEN A CONTAINER IS TO BE LOADED WITH A REDUCED QUANTITY OF LADING UNITS, THE LENGTHWISE CENTER OF GRAVITY OF THE LOAD MUST BE WITHIN 12", IN EITHER DIRECTION, OF THE MID-POINT OF THE CONTAINER.
1. IF A LOAD IS REDUCED BY ONLY A SMALL AMOUNT (ONE OR TWO LADING UNITS), LADING UNITS NORMALLY MAY BE ELIMINATED FROM THE CENTER OF THE LOAD.
  2. IF A LOAD IS REDUCED BY A LARGE AMOUNT (MORE THAN TWO LADING UNITS), LADING UNITS SHOULD BE ELIMINATED AS REQUIRED AND THE TOTAL LOAD SHIFTED FORE OR AFT, AS NECESSARY, TO ACHIEVE A SYMMETRICAL WEIGHT DISTRIBUTION. THE DEPICTED PROCEDURES WILL BE FOLLOWED AS CLOSELY AS POSSIBLE, MAKING ONLY THOSE ADJUSTMENTS TO THE DUNNAGE WHICH ARE REQUIRED TO ACCOMMODATE THE NUMBER OF UNITS TO BE SHIPPED.
- O. ANTI-CHAFING MATERIAL MAY BE INSTALLED AT POINTS OF CONTACT BETWEEN CONTAINERS, BETWEEN CONTAINERS AND THE END OPENING CONTAINER, AND BETWEEN CONTAINERS AND STEEL STRAPPING, IF DESIRED, TO PREVENT CHAFING DAMAGE TO CONTAINER PAINT AND MARKINGS.



**ISOMETRIC VIEW**

● AIR INFLATABLE RETARDER, BSU-49/B  
(CNU-335A/E CNTR) - - 1,038 LBS (APPROX)

● THE UNIT SHOWN ABOVE IS APPLICABLE TO BOTH THE AIR INFLATABLE RETARDER, BSU-49/B PACKED IN THE CNU-335A/E CONTAINER OR BSU-50/B PACKED IN THE CNU-338A/E CONTAINER. ALTHOUGH BOTH CONTAINERS ARE THE SAME SIZE, THE BSU-50/B PACKED IN THE CNU-338A/E CONTAINER WEIGHS APPROXIMATELY 550 POUNDS.



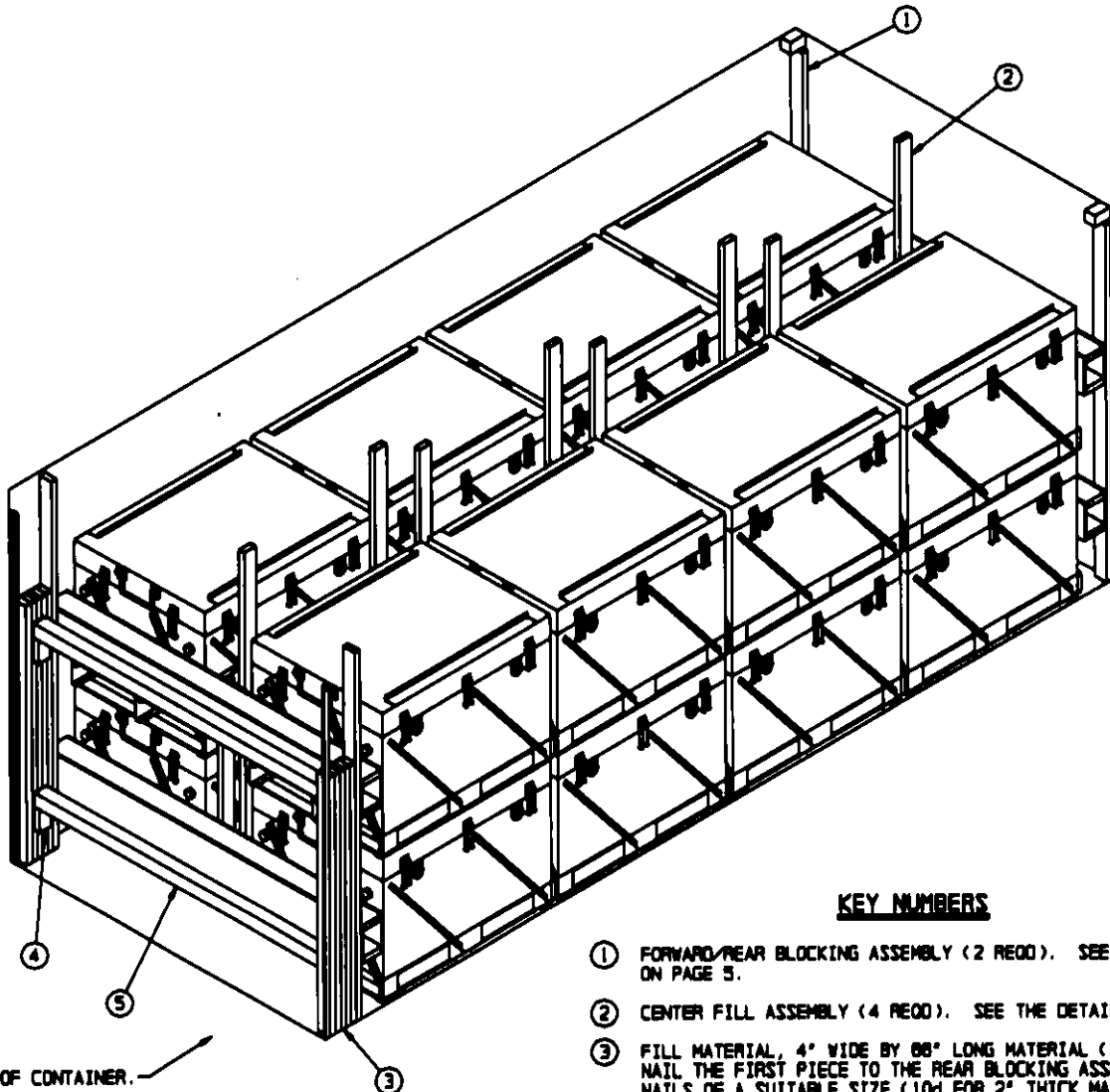
**ISOMETRIC VIEW**

◇ AIR INFLATABLE RETARDER, BSU-49/B  
(CNU-335/E CNTR) - - 1,038 LBS (APPROX)  
DUNNAGE - - - - - 82 LBS  
**TOTAL WEIGHT - - - - 1,120 LBS (APPROX)**

◇ THE UNIT SHOWN ABOVE IS APPLICABLE TO BOTH THE AIR INFLATABLE RETARDER, BSU-49/B PACKED IN THE CNU-335/E CONTAINER OR BSU-50/B PACKED IN THE CNU-338/E CONTAINER. ALTHOUGH BOTH CONTAINERS ARE THE SAME SIZE, THE BSU-50/B PACKED IN THE CNU-338/E CONTAINER WEIGHS APPROXIMATELY 641 POUNDS.

● NOTE: THE INTERMEDIATE FILLER PIECE OF THE "SIDE FILL ASSEMBLY A" MAY BE NOTCHED OR PARTIALLY OMITTED AS NECESSARY TO PROVIDE ACCESS TO THE HUMIDITY INDICATOR AND PRESSURE RELIEF VALVE. SEE "DETAIL A" ON PAGE 10.

BILL OF MATERIAL		
LUMBER	LINEAR FEET	BOARD FEET
2" X 8"	31	31
NAILS	NO. REOD	POUNDS
Bd (2")	88	3/4
STEEL STRAPPING, 3/4"	- - 35.00' REOD	- - 2-1/2 LBS
SEAL FOR 3/4" STRAPPING	- - - 2 REOD	- - - NIL
PLYWOOD, 1/2"	- - - 11.77 SQ FT REOD	- - 16.19 LBS



**ISOMETRIC VIEW**

**KEY NUMBERS**

- ① FORWARD/REAR BLOCKING ASSEMBLY (2 REQ). SEE THE DETAIL ON PAGE 5.
- ② CENTER FILL ASSEMBLY (4 REQ). SEE THE DETAIL ON PAGE 5.
- ③ FILL MATERIAL, 4" WIDE BY 66" LONG MATERIAL (AS REQ). NAIL THE FIRST PIECE TO THE REAR BLOCKING ASSEMBLY W/5 NAILS OF A SUITABLE SIZE (10d FOR 2" THICK MATERIAL). NAIL EACH ADDITIONAL PIECE TO THE PREVIOUS PIECE IN A SIMILAR MANNER. NOTE: MULTIPLE PIECES MAY BE LAMINATED TOGETHER FIRST AND THEN TO NAILED TO THE REAR BLOCKING ASSEMBLY. SEE THE "SOLID FILL DETAIL A" AND THE "SOLID FILL DETAIL B" ON PAGE 11.
- ④ STRUT LEDGER, 2" X 4" X 8" (4 SHOWN - OPTIONAL). INSTALL IF DESIRED TO AID IN THE INSTALLATION OF SPANNER PIECES. NAIL TO THE FILL MATERIAL W/2-10d NAILS.
- ⑤ DOOR SPANNER, 4" X 4" MATERIAL, CUT TO A LENGTH THAT WILL PROVIDE FOR A DRIVE FIT (REF: 7'-1-3/8") (2 REQ). TOENAIL TO THE FILL MATERIAL PIECES W/2-12d NAILS AT EACH END. SEE THE "BEVEL-CUT" DETAIL ON PAGE 8. NOTE THAT THESE PIECES AND THE STRUT LEDGERS ARE NOT REQUIRED IF THE SPACE BETWEEN THE REAR BLOCKING ASSEMBLY AND THE LOAD RETAINER IS LESS THAN 8".

**LOAD AS SHOWN**

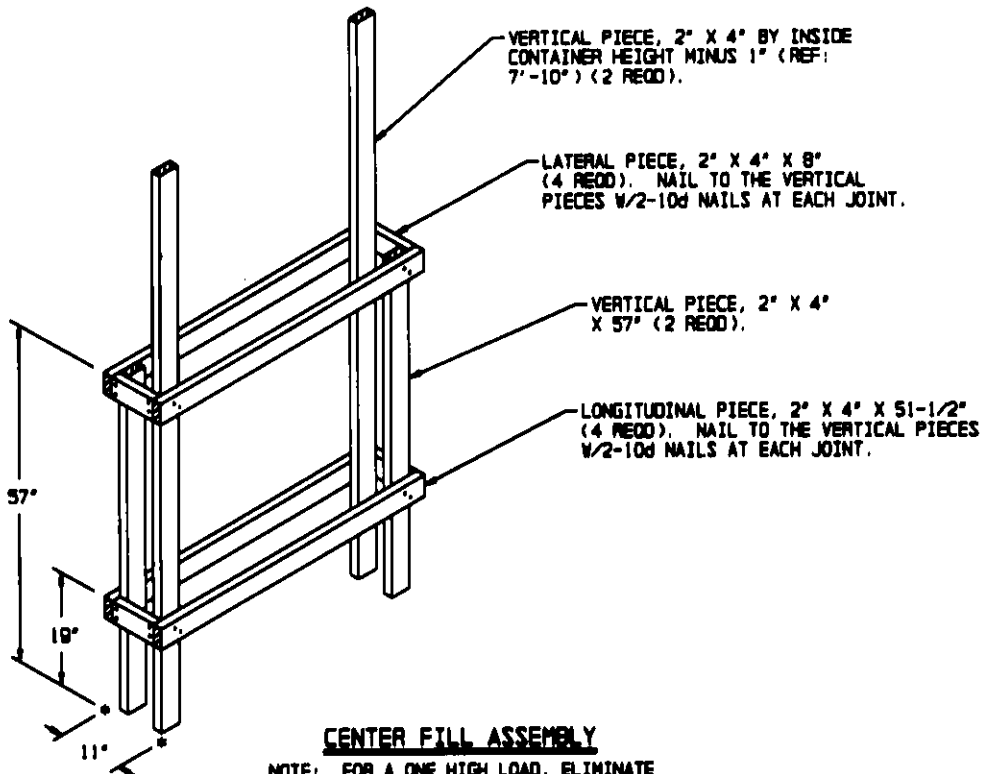
ITEM	QUANTITY	WEIGHT (APPROX)
CNU-335A/E	18	18,808 LBS
DUNNAGE		592 LBS
CONTAINER		4,700 LBS
<b>TOTAL WEIGHT</b>		<b>21,900 LBS (APPROX)</b>

**LOAD AS SHOWN**

ITEM	QUANTITY	WEIGHT (APPROX)
CNU-338A/E	18	8,044 LBS
DUNNAGE		592 LBS
CONTAINER		4,700 LBS
<b>TOTAL WEIGHT</b>		<b>14,236 LBS (APPROX)</b>

**BILL OF MATERIAL**

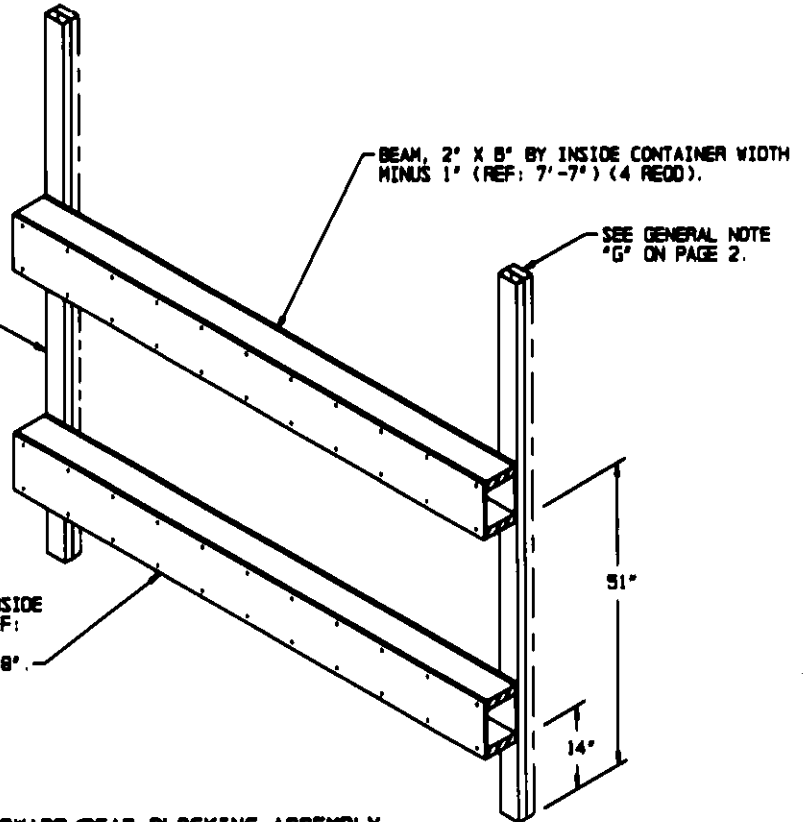
LUMBER	LINEAR FEET	BOARD FEET
2" X 4"	288	178
2" X 8"	81	81
4" X 4"	15	20
NAILS	NO. REQ	POUNDS
8d (2")	178	1-1/4
10d (3")	218	3-1/2
12d (3-1/4")	8	1/4
PLYWOOD, 1/2" --- 48.03 SQ FT REQ		--- 88.04 LBS



**CENTER FILL ASSEMBLY**

NOTE: FOR A ONE HIGH LOAD, ELIMINATE THE TOP TWO LONGITUDINAL PIECES AND THE TOP TWO LATERAL PIECE, AND SHORTEN THE 57" VERTICAL PIECES TO 18".

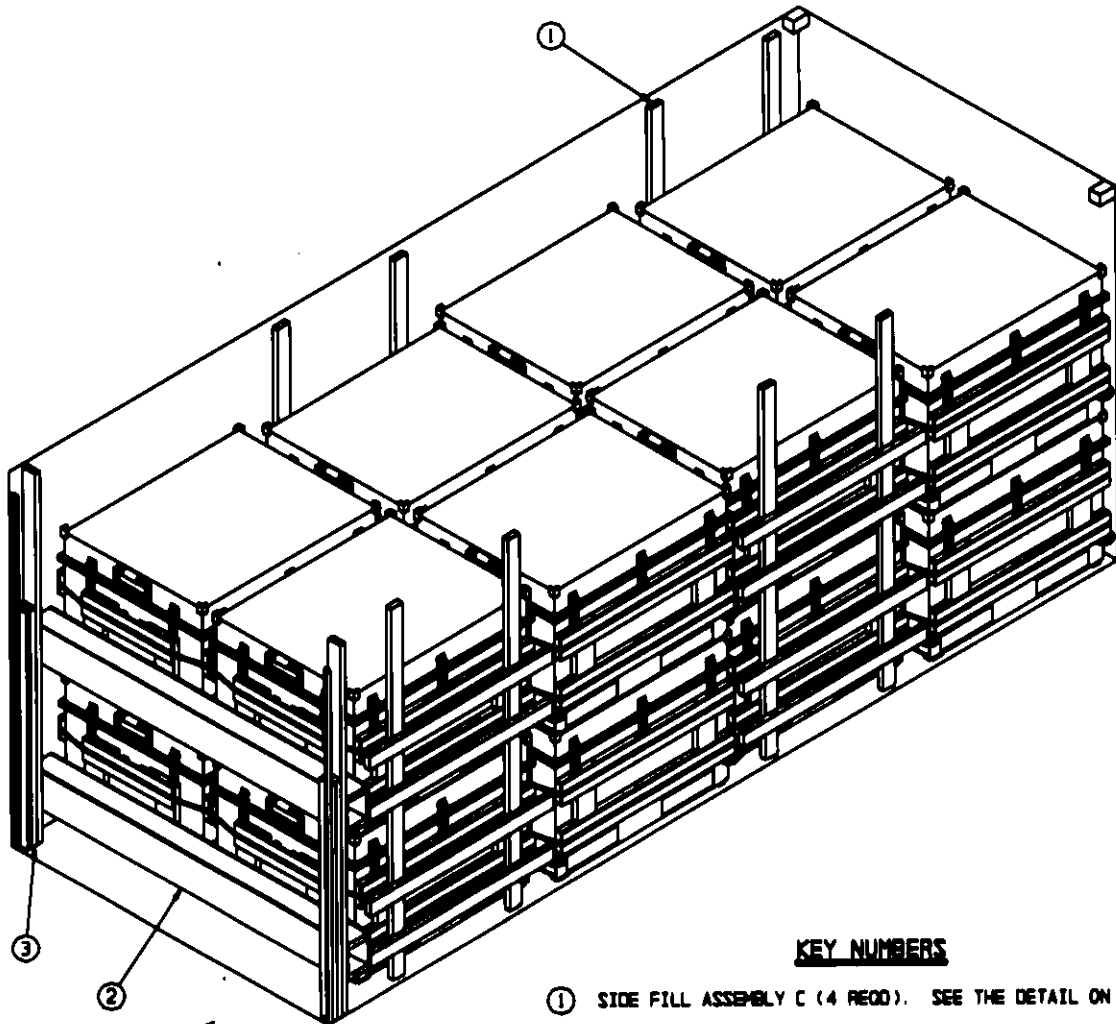
BUFFER PIECE, 2" X 4" BY INSIDE CONTAINER HEIGHT MINUS 1" (REF: 7'-7" IN THE FORWARD END OF THE CONTAINER, 7'-10" IN THE REAR OF THE CONTAINER) (2 REQD). NAIL THRU THE PLYWOOD INTO THE BEAMS 1/2-10d NAILS AT EACH JOINT.



PLYWOOD, 1/2" X 8-1/2" BY INSIDE CONTAINER WIDTH MINUS 1" (REF: 7'-7") (4 REQD). NAIL TO THE BEAMS 1/1-8d NAIL EVERY 8".

**FORWARD/REAR BLOCKING ASSEMBLY**

NOTE: FOR A ONE HIGH LOAD, ELIMINATE THE TOP BOX BEAR ASSEMBLY.



REAR OF CONTAINER.

ISOMETRIC VIEW

KEY NUMBERS

- ① SIDE FILL ASSEMBLY C (4 RECD). SEE THE DETAIL ON PAGE 7.
- ② REAR BLOCKING ASSEMBLY (1 RECD). SEE THE DETAIL ON PAGE 7.
- ③ FILL MATERIAL, 4" WIDE BY 80' LONG MATERIAL (AS RECD). NAIL THE FIRST PIECE TO THE REAR BLOCKING ASSEMBLY W/S NAILS OF A SUITABLE SIZE (10d FOR 2" THICK MATERIAL). NAIL EACH ADDITIONAL PIECE TO THE PREVIOUS PIECE IN A SIMILAR MANNER. NOTE: MULTIPLE PIECES MAY BE LAMINATED TOGETHER FIRST AND THEN TOENAILED TO THE REAR BLOCKING ASSEMBLY. SEE THE "SOLID FILL DETAIL A" AND THE "SOLID FILL DETAIL B" ON PAGE 11.

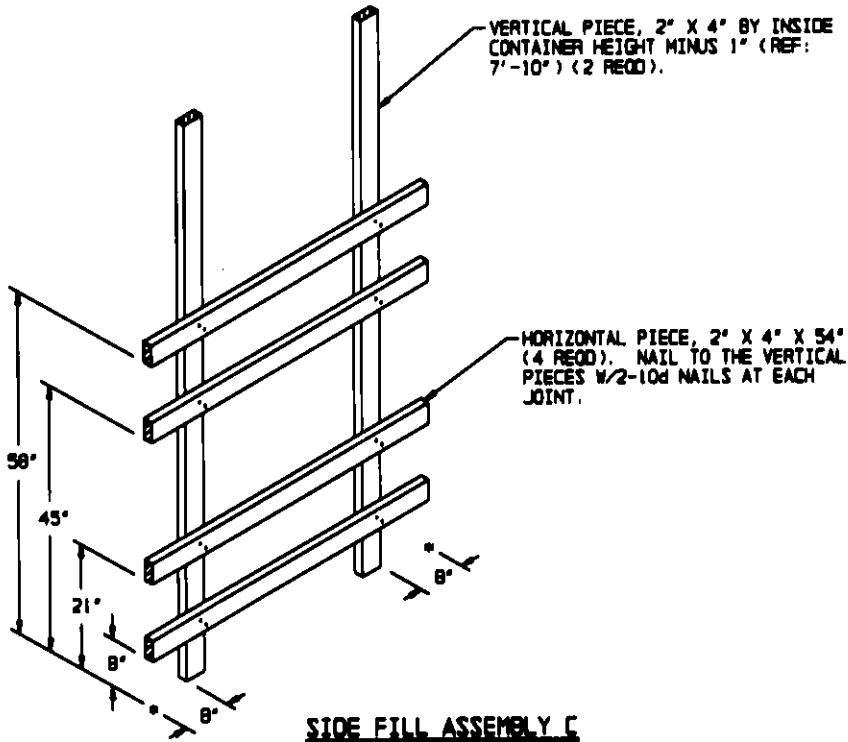
LOAD AS SHOWN

ITEM	QUANTITY	WEIGHT (APPROX)
CNU-335/E	18	17,920 LBS
DUNNAGE		328 LBS
CONTAINER		4,700 LBS
TOTAL WEIGHT		22,948 LBS (APPROX)

LOAD AS SHOWN

ITEM	QUANTITY	WEIGHT (APPROX)
CNU-338/E	18	10,258 LBS
DUNNAGE		328 LBS
CONTAINER		4,700 LBS
TOTAL WEIGHT		15,282 LBS (APPROX)

<u>BILL OF MATERIAL</u>		
LUMBER	LINEAR FEET	BOARD FEET
2" X 4"	171	114
2" X 8"	31	31
NAILS	NO. RECD	POUNDS
8d (2")	88	3/4
10d (3")	100	1-3/4
PLYWOOD, 1/2"	24.02 SQ FT RECD	33.03 LBS

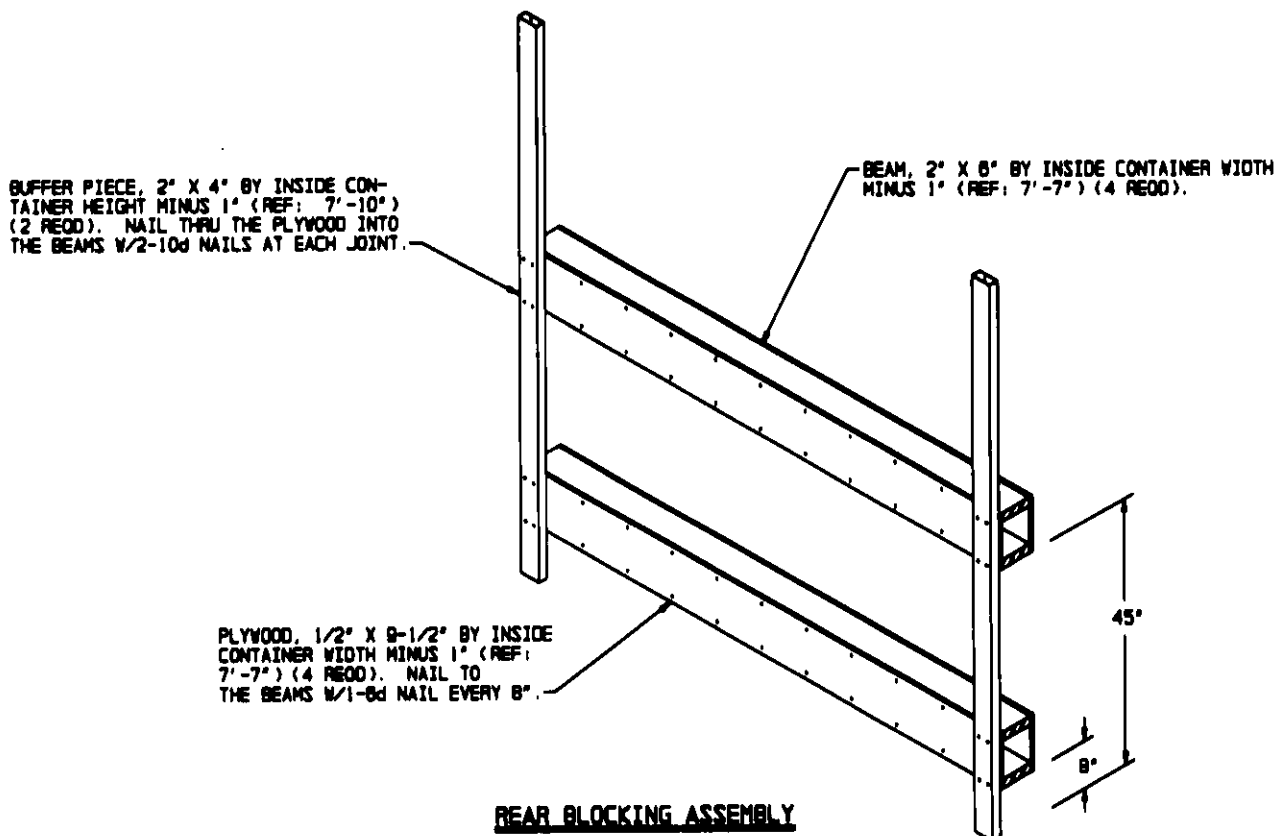


VERTICAL PIECE, 2" X 4" BY INSIDE CONTAINER HEIGHT MINUS 1" (REF: 7'-10") (2 RECD).

HORIZONTAL PIECE, 2" X 4" X 54" (4 RECD). NAIL TO THE VERTICAL PIECES W/2-10d NAILS AT EACH JOINT.

**SIDE FILL ASSEMBLY C**

NOTE: FOR A ONE HIGH LOAD, ELIMINATE THE TOP TWO HORIZONTAL PIECES.



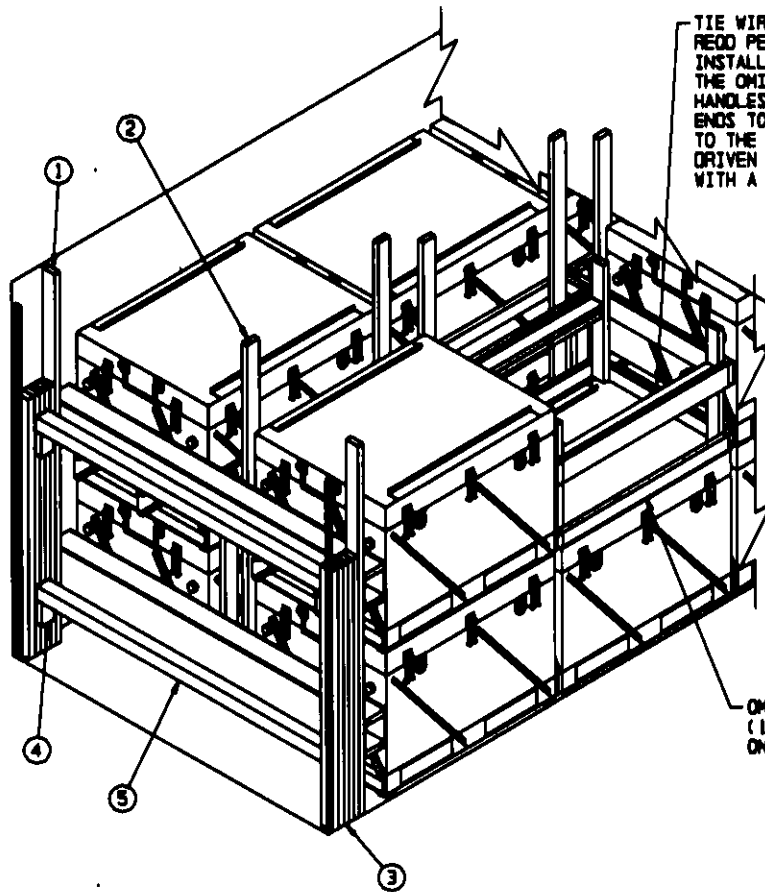
BUFFER PIECE, 2" X 4" BY INSIDE CONTAINER HEIGHT MINUS 1" (REF: 7'-10") (2 RECD). NAIL THRU THE PLYWOOD INTO THE BEAMS W/2-10d NAILS AT EACH JOINT.

BEAM, 2" X 6" BY INSIDE CONTAINER WIDTH MINUS 1" (REF: 7'-7") (4 RECD).

PLYWOOD, 1/2" X 8-1/2" BY INSIDE CONTAINER WIDTH MINUS 1" (REF: 7'-7") (4 RECD). NAIL TO THE BEAMS W/1-6d NAIL EVERY 8".

**REAR BLOCKING ASSEMBLY**

NOTE: FOR A ONE HIGH LOAD, ELIMINATE THE TOP BOX BEAM ASSEMBLY.

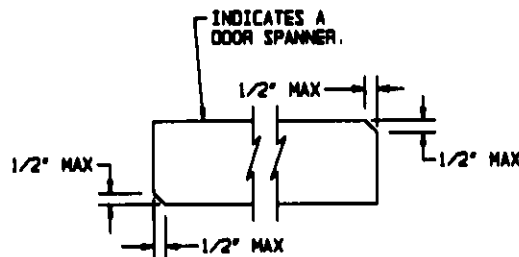


TIE WIRE, NO. 14 GAGE WIRE 18" LONG (2 REED PER OMITTED CONTAINER ASSEMBLY). INSTALL TO FORM A COMPLETE LOOP AROUND THE OMITTED CONTAINER ASSEMBLY AND THE HANDLES ON THE LOWER CONTAINER. BRING ENDS TOGETHER AND TWIST TAUT. SECURE TO THE SPACER ASSEMBLY WITH A PARTIALLY DRIVEN 10d NAIL BENT OVER THE WIRE OR WITH A STRAP STAPLE.

OMITTED CONTAINER ASSEMBLY A (1 SHOWN). SEE THE DETAIL ON PAGE 8.

### LESS-THAN-FULL-LOAD PROCEDURE

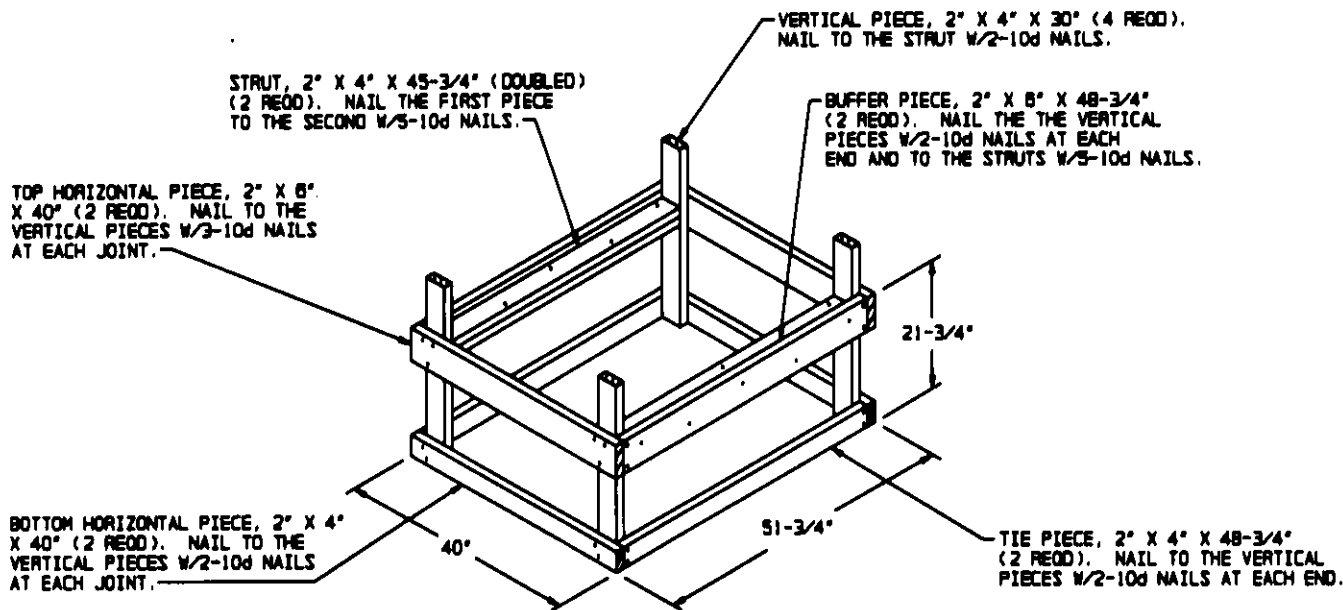
THE DETAIL ABOVE DEPICTS A BLOCKING METHOD TO BE USED IN A LESS-THAN-FULL CONTAINER LOAD (LESS THAN 16 UNITS). KEY NUMBERS REFER TO KEY NUMBERS ON PAGE 4. THE CNU-335A/E AND/ OR THE CNU-338A/E IS SHOWN AS TYPICAL, BUT THE PROCEDURES MAY ALSO BE APPLIED TO THE CONTAINERS AND LOAD DEPICTED ON PAGE 6. SEE GENERAL NOTE "N" ON PAGE 2.



### BEVEL-CUT

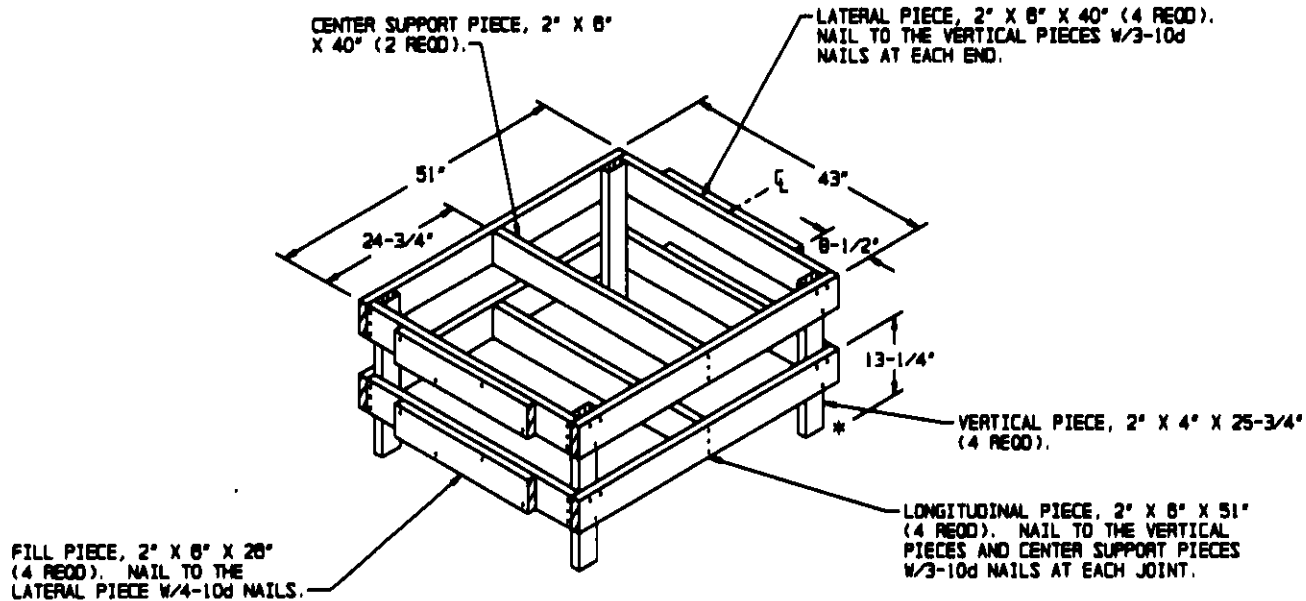
IF DESIRED, EACH END OF A DOOR SPANNER PIECE MAY BE BEVEL-CUT AS SHOWN ABOVE TO FACILITATE THE ACHIEVEMENT OF A TIGHT FILL-TO-FILL FIT.





#### OMITTED CONTAINER ASSEMBLY A

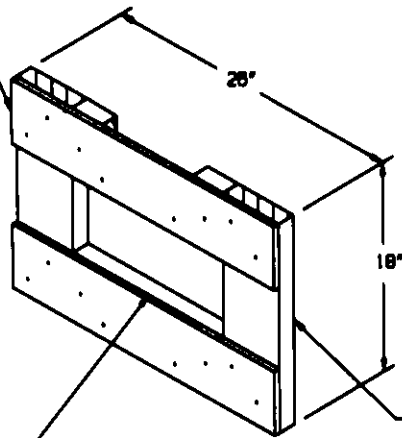
THIS ASSEMBLY IS TO BE USED FOR THE LOAD SHOWN ON PAGE 4 WHEN OMITTING CONTAINER UNITS. SEE THE "LESS-THAN-FULL-LOAD" PROCEDURES DEPICTED ON PAGE 8.



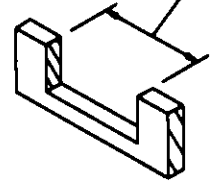
#### OMITTED CONTAINER ASSEMBLY B

THIS ASSEMBLY IS TO BE USED FOR THE LOAD SHOWN ON PAGE 6 WHEN OMITTING CONTAINER UNITS. SEE THE "LESS-THAN-FULL-LOAD" PROCEDURES DEPICTED ON PAGE 8.

LATERAL PIECE, 5-1/2" X 28" X 1/2"  
THICK PLYWOOD (2 REQD). NAIL TO  
THE VERTICAL PIECES W/2-8d NAILS  
AT EACH END AND TO INTERMEDIATE  
FILLER PIECE W/4-8d NAILS.



NOTCH AS REQD TO PROVIDE  
VISUAL ACCESS TO THE HUMIDITY  
INDICATOR AND PRESSURE RELIEF  
VALVE ON THE SIDE OF THE  
SHIPPING AND STORAGE CONTAINER.



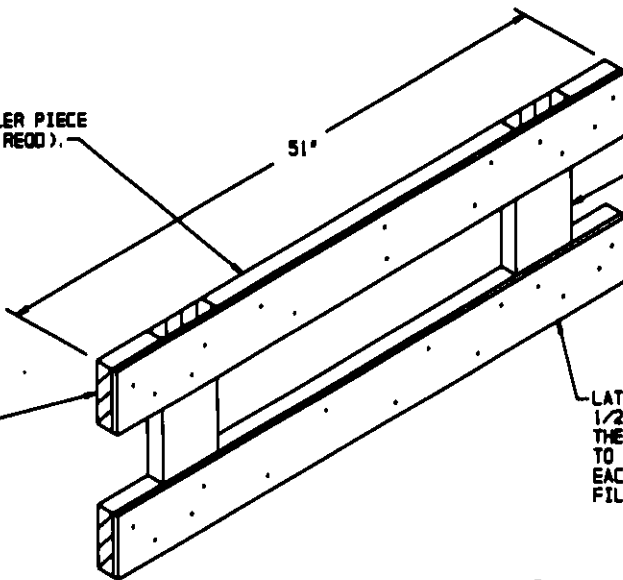
**DETAIL A**

INTERMEDIATE FILLER PIECE,  
2" X 8" X 15" (2 REQD).  
NOTCH TOP PIECE SO AS TO  
ALLOW VIEWING OF HUMIDITY  
INDICATOR AND PRESSURE  
RELIEF VALVE SEE "DETAIL A".

VERTICAL PIECE,  
2" X 8" X 18"  
(2 REQD).

**SIDE FILL ASSEMBLY A**

INTERMEDIATE FILLER PIECE  
2" X 8" X 30" (2 REQD).

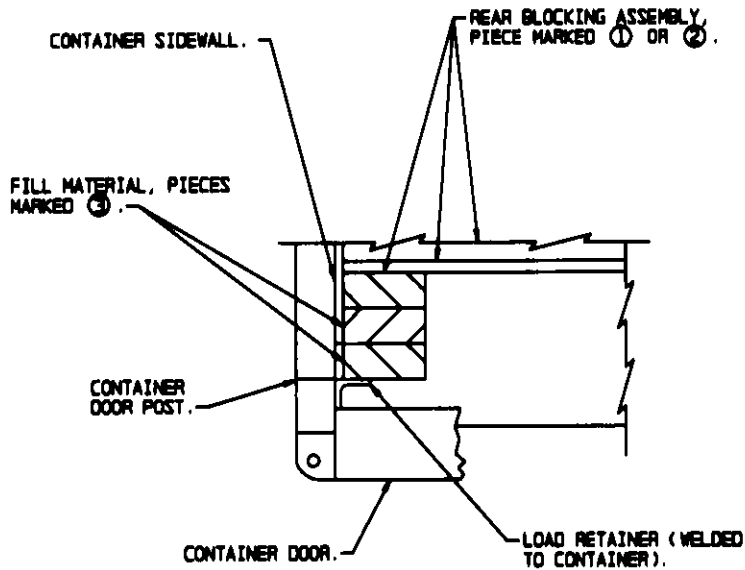


VERTICAL PIECE, 2" X  
8" X 18" (2 REQD).

END FILLER PIECE,  
2" X 8" X 5" (4 REQD).

LATERAL PIECE, 5-1/2" WIDE BY 51" LONG BY  
1/2" THICK PLYWOOD (2 REQD). NAIL TO  
THE END FILLER PIECES W/2-8d NAILS AND  
TO THE VERTICAL PIECES W/2-8d NAILS AT  
EACH JOINT. NAIL TO THE INTERMEDIATE  
FILLER PIECE W/8-8d NAILS.

**SIDE FILL ASSEMBLY B**

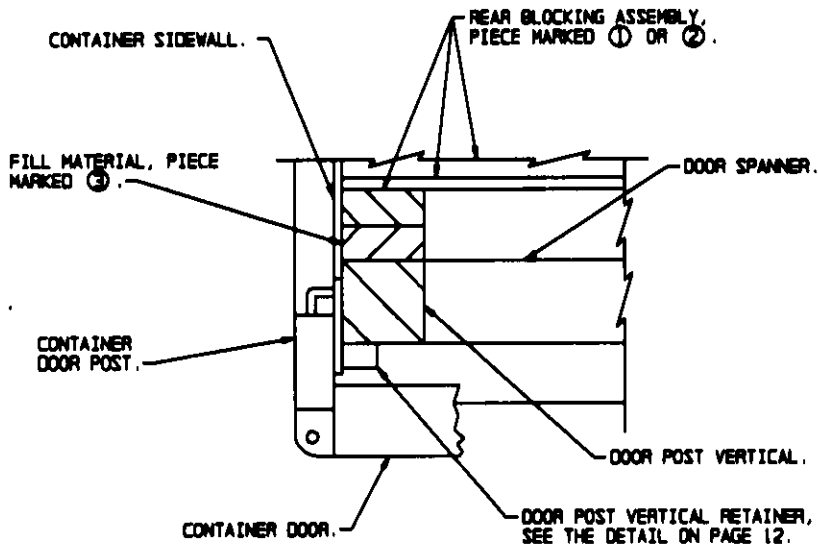


**DETAIL A**

A PARTIAL PLAN VIEW OF THE LEFT REAR PORTION OF THE CONTAINER (AS DEPICTED ON PAGE 6) IS SHOWN DEPICTING THE PROPER POSITION OF THE FILL MATERIAL AND ADJACENT DUNNAGE PIECES.

**SPECIAL NOTE:**

WHEN ISO CONTAINERS ARE NOT EQUIPPED WITH PRE-WELDED LOAD RETAINERS, AS DEPICTED IN "DETAIL A" ABOVE, DOOR POST VERTICALS, DOOR POST VERTICAL RETAINERS AND DOOR SPANNERS WILL BE REQUIRED FOR THE LOADS DEPICTED ON PAGE 4 AND PAGE 6. SEE VARIOUS LOADS WITHIN AMC DRAWING 18-48-4153-15PA1002 FOR EXAMPLES. SEE PAGE 12 FOR DETAILS OF THE METAL DOOR POST VERTICAL RETAINER.

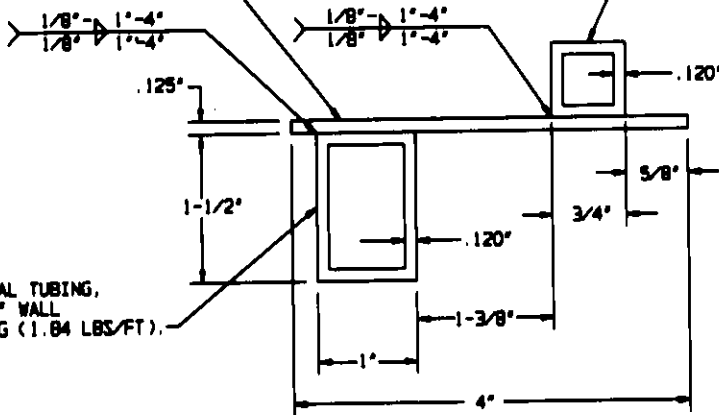


**DETAIL B**

A PARTIAL PLAN VIEW OF THE LEFT REAR PORTION OF THE CONTAINER (AS DEPICTED ON PAGE 6) IS SHOWN DEPICTING THE PROPER POSITION OF THE DOOR POST VERTICAL RETAINER AND ADJACENT DUNNAGE PIECES.

STEEL STRIP, 1/8" THICK BY 4" WIDE  
BY 83" LONG (1.70 LBS/FT).

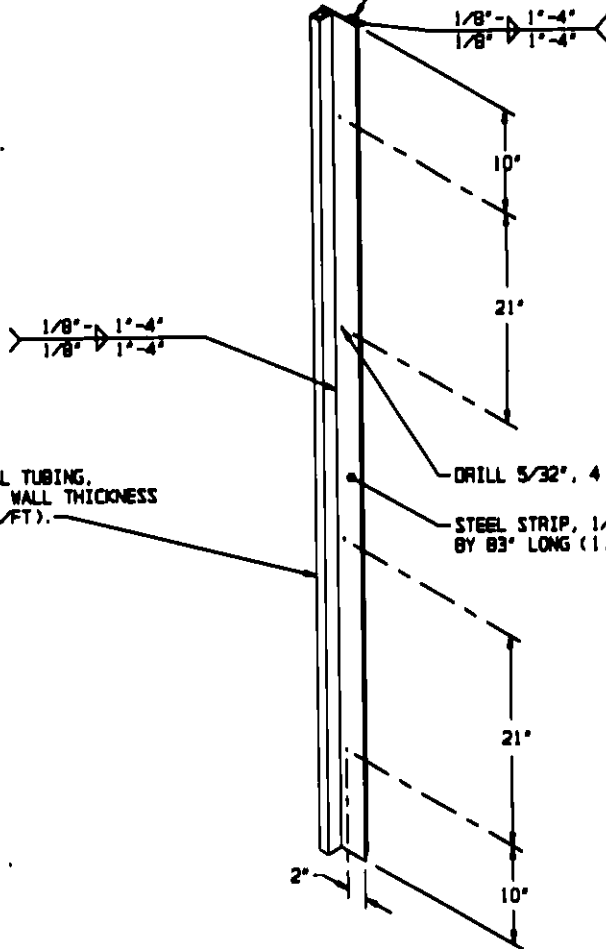
SQUARE STRUCTURAL TUBING, 3/4" SQUARE  
BY .120" WALL THICKNESS BY 83" LONG  
(1.03 LBS/FT).



RECTANGULAR STRUCTURAL TUBING,  
1-1/2" BY 1" BY .120" WALL  
THICKNESS BY 83" LONG (1.84 LBS/FT).

**VIEW A**

VIEW A  
SQUARE STRUCTURAL TUBING,  
3/4" SQUARE BY .120" WALL  
THICKNESS BY 83" LONG  
(1.03 LBS/FT).



RECTANGULAR STRUCTURAL TUBING,  
1-1/2" BY 1" BY .120" WALL THICKNESS  
BY 83" LONG (1.84 LBS/FT).

DRILL 5/32", 4 HOLES.

STEEL STRIP, 1/8" THICK BY 4" WIDE  
BY 83" LONG (1.70 LBS/FT).

**DOOR POST VERTICAL RETAINER**

NOTE: THE ABOVE ASSEMBLY HAS BEEN SHOWN ROTATED 90° FROM THE ORIENTATION IN WHICH IT IS INSTALLED IN THE LEFT REAR CORNER OF THE CONTAINER. THE ASSEMBLY HAS BEEN ROTATED FOR HOLE LOCATION CLARITY.