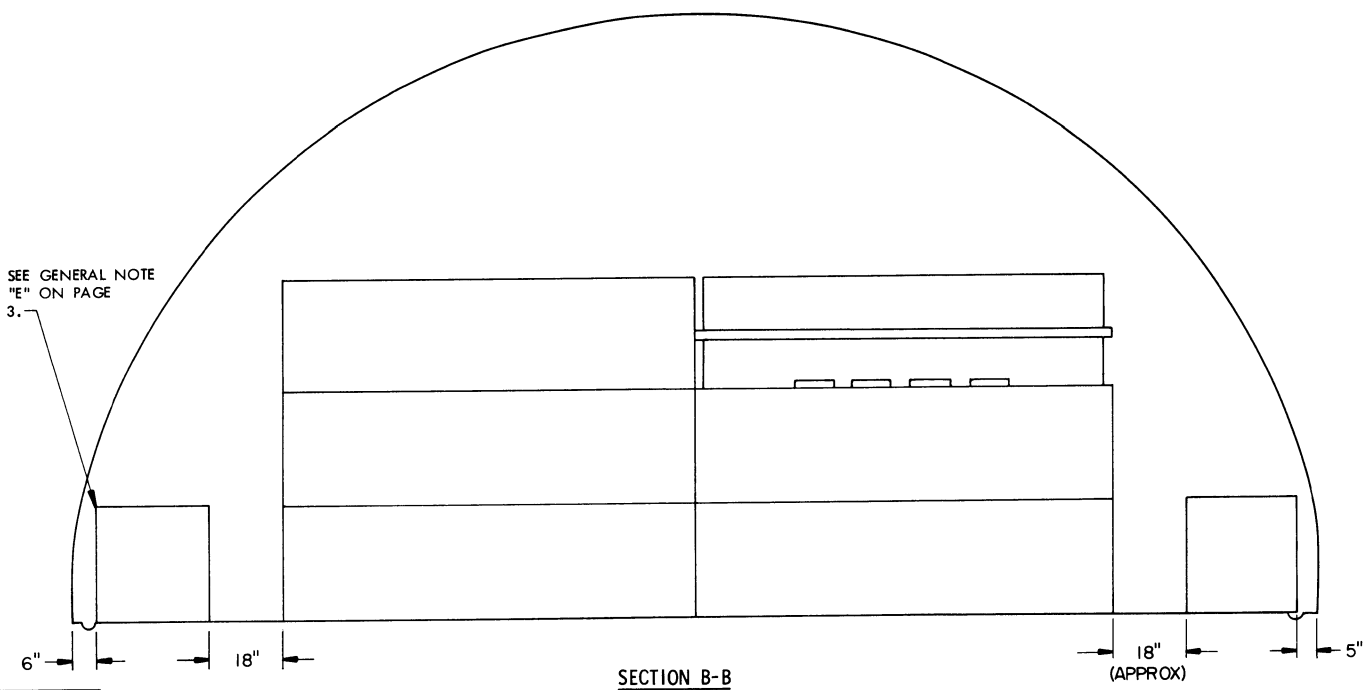
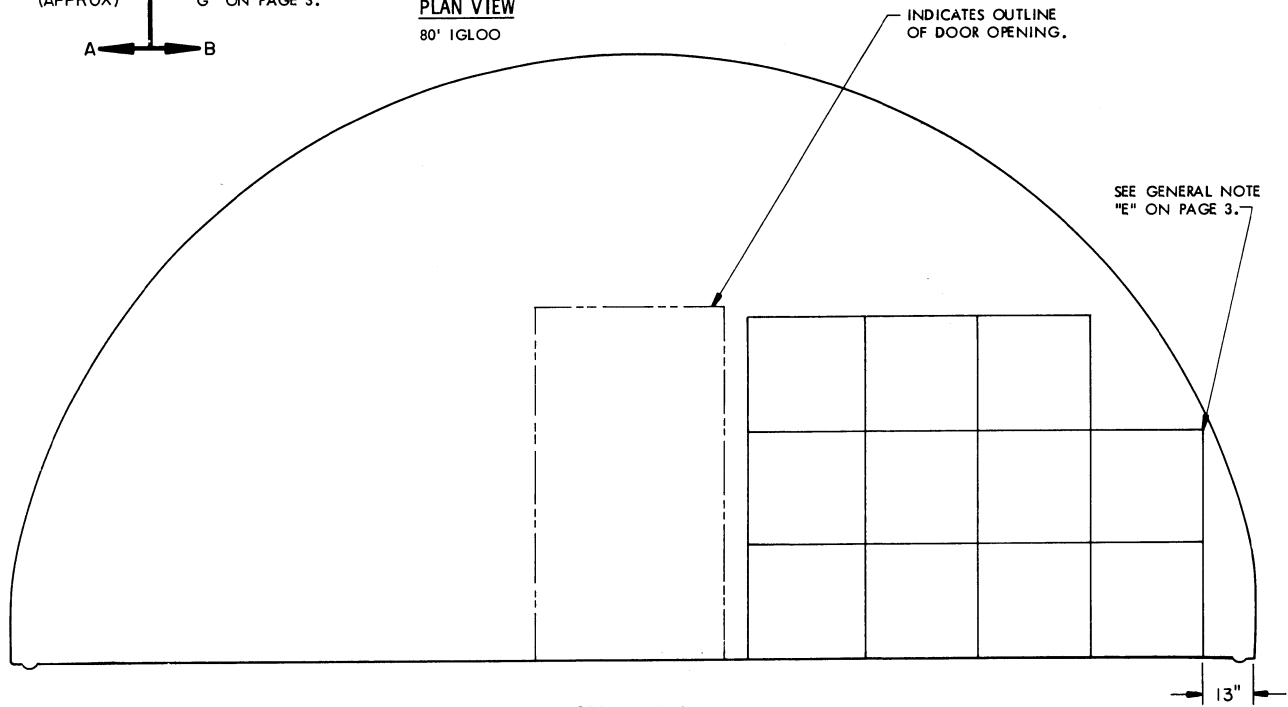


STORAGE AS SHOWN
80' IGLOO

ITEM	QUANTITY
CONTAINER WITH MISSILE ----	191



STORAGE AS SHOWN

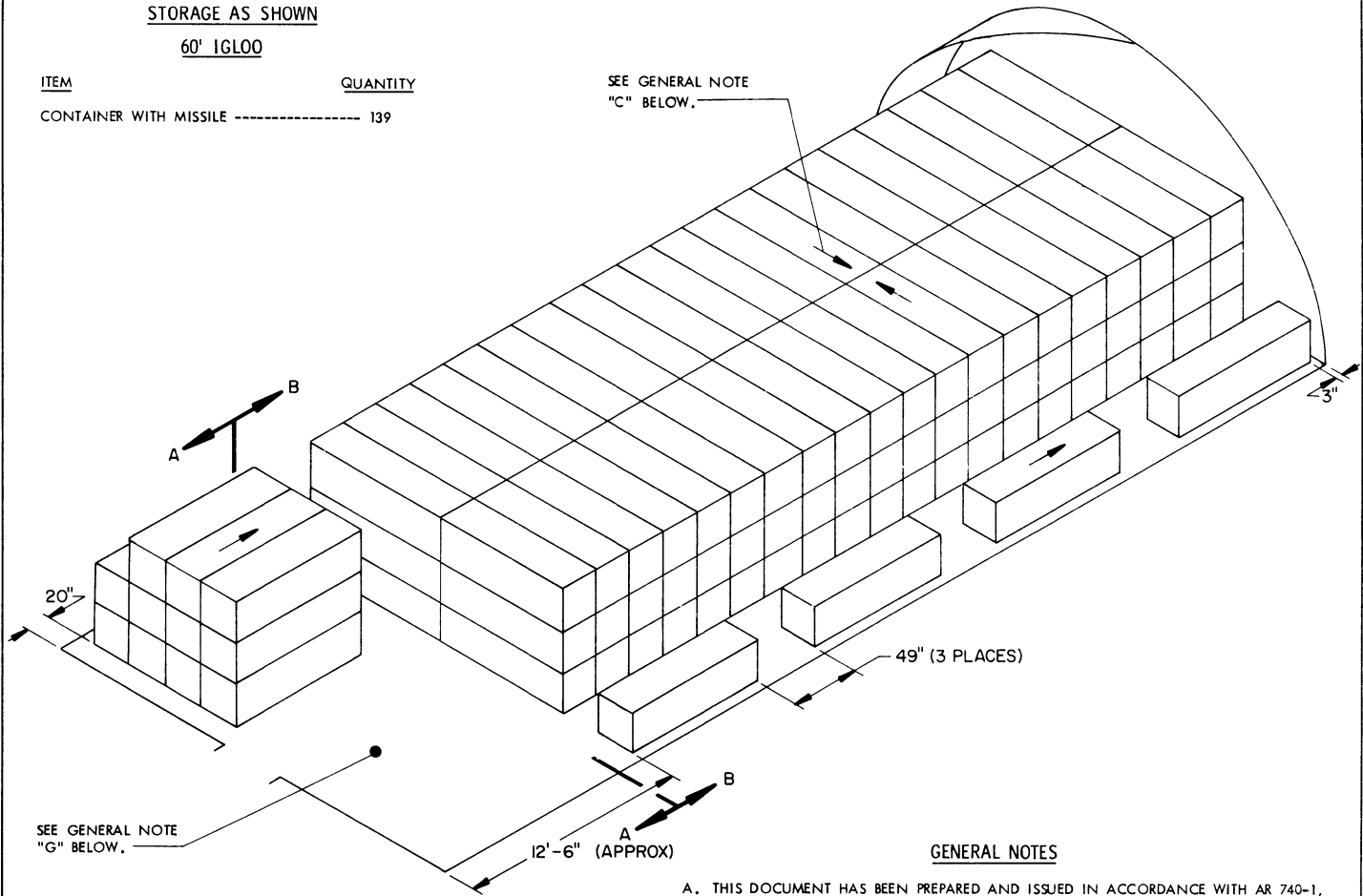
60' IGLOO

ITEM

QUANTITY

CONTAINER WITH MISSILE ----- 139

SEE GENERAL NOTE
"C" BELOW.



SEE GENERAL NOTE
"G" BELOW.

ISOMETRIC VIEW

60' IGLOO

(GENERAL NOTES CONTINUED)

L. THE PROCEDURES DEPICTED HEREIN MAY ALSO BE USED FOR STORAGE OF THE DESIGNATED CONTAINERS WHEN THEY ARE FILLED WITH ITEMS WHICH HAVE A NOMENCLATURE WHICH IS DIFFERENT FROM THAT SHOWN. THE EXPLOSIVE CLASSIFICATION OF OTHER ITEMS MAY BE DIFFERENT THAN THAT SHOWN.

GENERAL NOTES

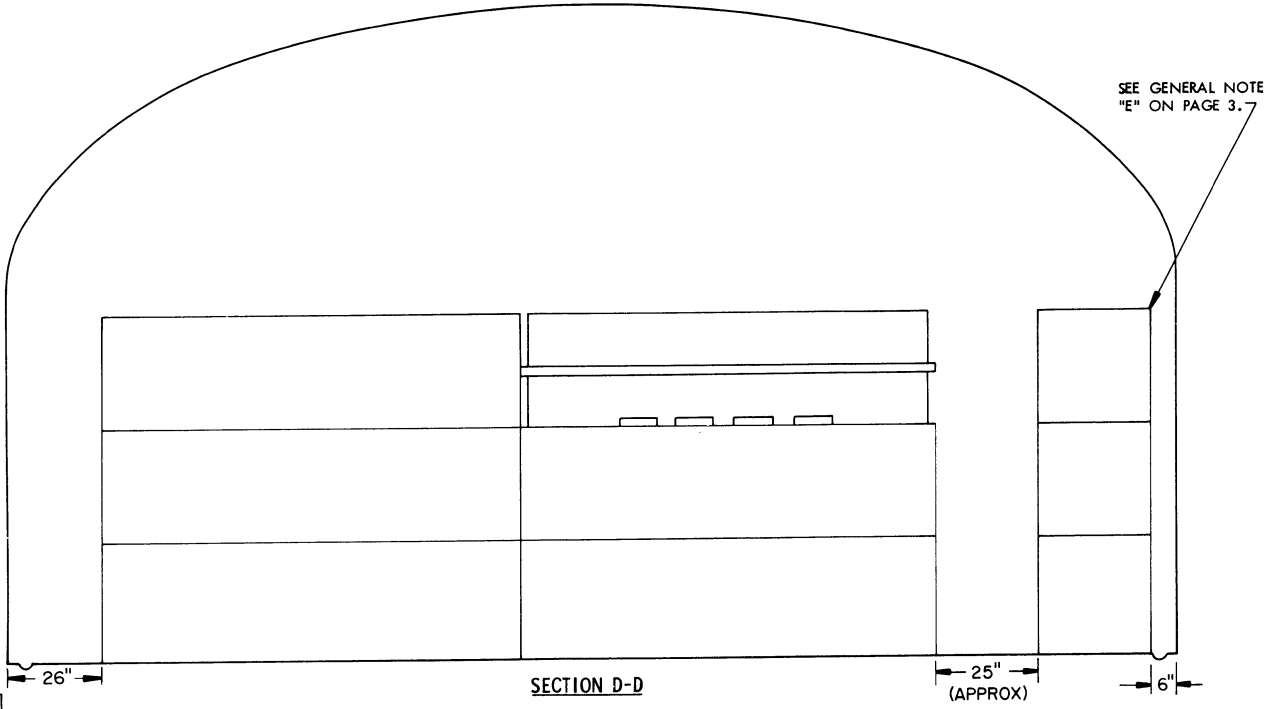
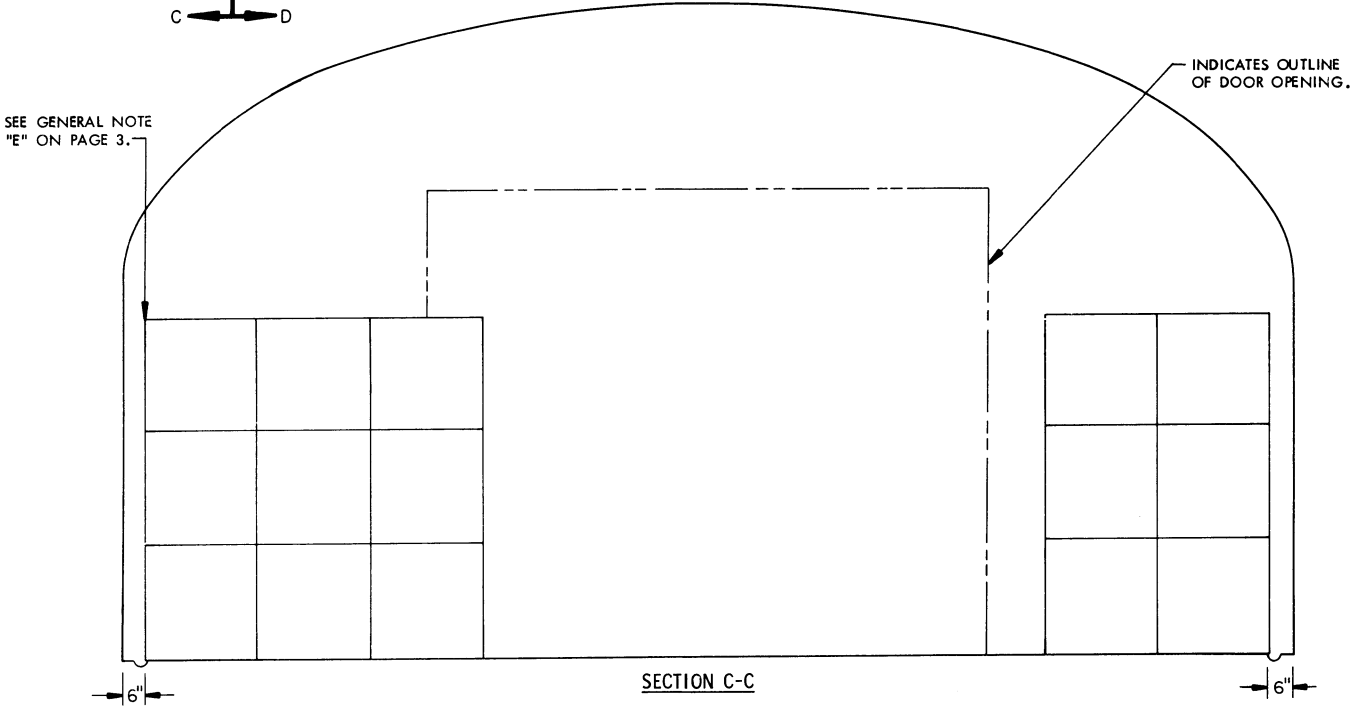
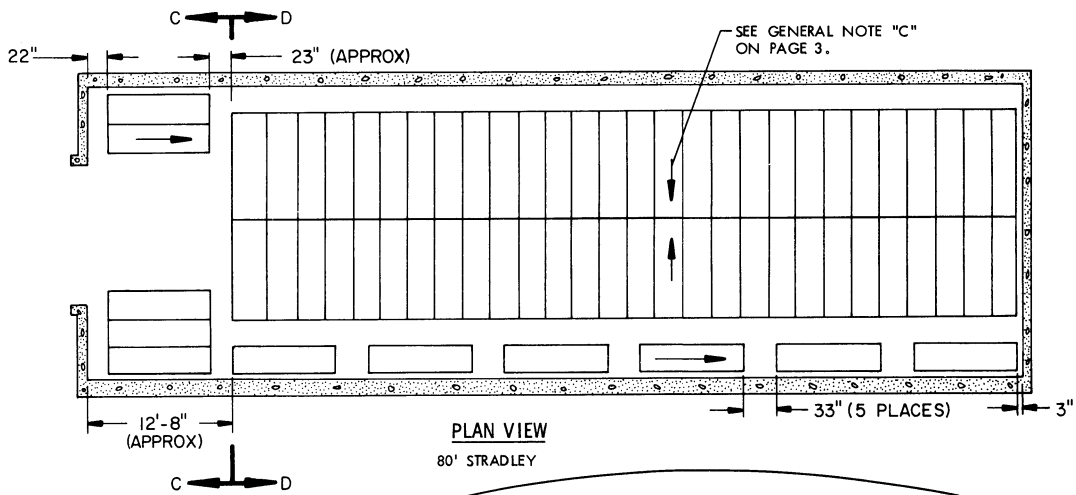
- A. THIS DOCUMENT HAS BEEN PREPARED AND ISSUED IN ACCORDANCE WITH AR 740-1, AND AUGMENTS TM 743-200-1 (CHAPTER 5).
- B. DETAILS:
 - 1. CNU 263/E CONTAINER WITH MISSILE:
DIMENSIONS -- 106-3/4" LONG X 28-3/4" WIDE X 29" HIGH.
WEIGHT ----- 720 POUNDS (APPROX).
 - 2. CNU 131/E CONTAINER WITH MISSILE:
DIMENSIONS -- 104-3/4" LONG X 25-5/8" WIDE X 27-9/16" HIGH.
WEIGHT ----- 851 POUNDS (APPROX).
- C. THESE ITEMS ARE QD CLASS 7 AND ARE IN COMPATIBILITY GROUP F. **CAUTION:** THESE ITEMS ARE IN A "PROPLUSIVE STATE" AND CONTAINERS MUST BE STORED WITH THE NOSE END FACING TOWARD THE REAR WALL OR A SIDE WALL OF THE MAGAZINE, NOT TOWARD THE FRONT WALL. THE PROCEDURES AS DEPICTED PROVIDE ACCESS TO TO THE HUMIDITY INDICATOR ON THE AFT END OF THE MISSILE.
- D. AISLE DIMENSIONS SHOWN IN THIS DRAWING MAY BE ADJUSTED TO SUIT LOCAL CONDITIONS AND/OR AVAILABLE MATERIALS HANDLING EQUIPMENT (MHE). THE DIMENSIONS SHOWN ARE BASED ON THE STORAGE OF CNU 263/E CONTAINERS. WHEN STORING CNU 131/E CONTAINERS, AISLE DIMENSIONS WILL BE SLIGHTLY LARGER.
- E. STORED CONTAINERS MUST NOT CONTACT THE WALL OF A MAGAZINE. TO PROVIDE FOR THIS MANDATORY CLEARANCE REQUIREMENT, THE SPACE AT THE SIDEWALLS OF THE MAGAZINE MAY BE ADJUSTED ACCORDINGLY, OR A CONTAINER MAY BE OMITTED FROM A DEPICTED STACKING PATTERN AS NECESSARY.
- F. **CAUTION:** CONTAINERS MUST NOT BE STACKED MORE THAN THREE (3) CONTAINERS HIGH.
- G. ADDITIONAL CNU 263/E OR CNU 131/E CONTAINERS MAY BE STORED IN THE FRONTAL AREA OF THE MAGAZINE IF AVAILABLE MATERIALS HANDLING EQUIPMENT PERMITS.
- H. THE STORAGE PROCEDURES DEPICTED HEREIN FOR SPECIFIC TYPES OF MAGAZINES MAY ALSO BE UTILIZED TO STORE CONTAINERS IN OTHER TYPES OF APPROVED MAGAZINES. MINOR ADJUSTMENTS MAY BE MADE TO FACILITATE STORAGE IN OTHER TYPES OF MAGAZINES, HOWEVER, THE BASIC PRINCIPLES AS DEPICTED HEREIN WILL BE COMPLIED WITH.
- J. ITEM LOTS WILL NOT BE MIXED, BUT ONLY TO THE EXTENT THAT ITEMS OF ONE LOT WILL NOT BE STACKED ON TOP OF ITEMS FROM ANOTHER LOT.
- K. THE STORAGE PROCEDURES DEPICTED FOR IGLOO MAGAZINES ARE ALSO APPLICABLE FOR STEEL ARCH MAGAZINES WHICH HAVE A SIMILAR CROSS SECTIONAL AREA.

REVISIONS

REVISION NO. 1, DATED APRIL 1981, CONSISTS OF:

- 1. ADDING "CAUTION" NOTE TO COVER PAGE.

(CONTINUED AT LEFT)



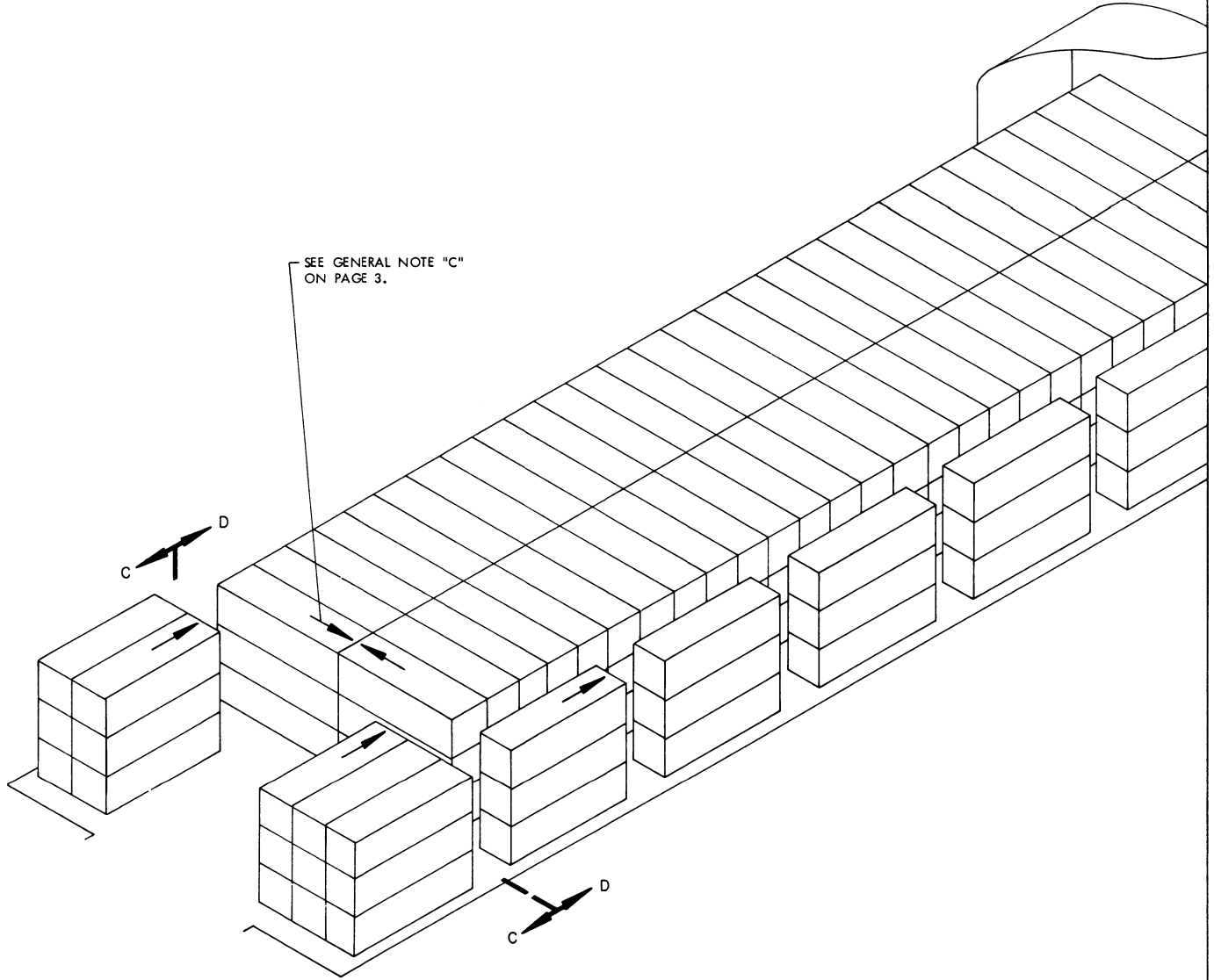
STORAGE AS SHOWN

80' STRADLEY

ITEM

QUANTITY

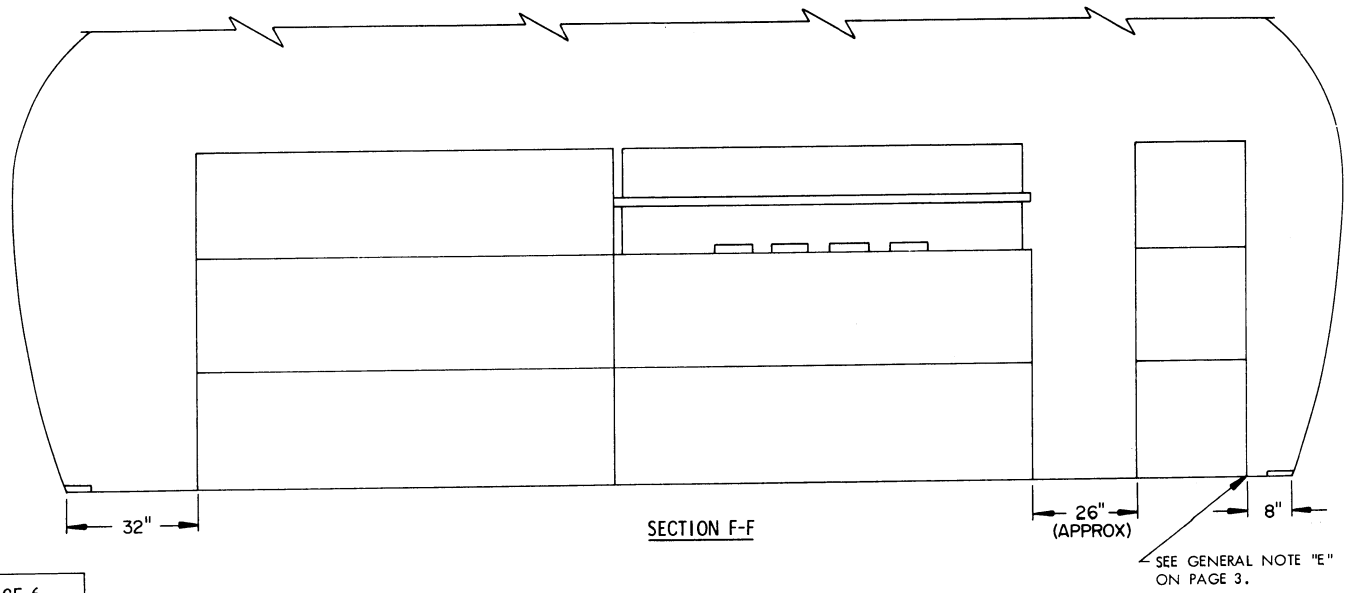
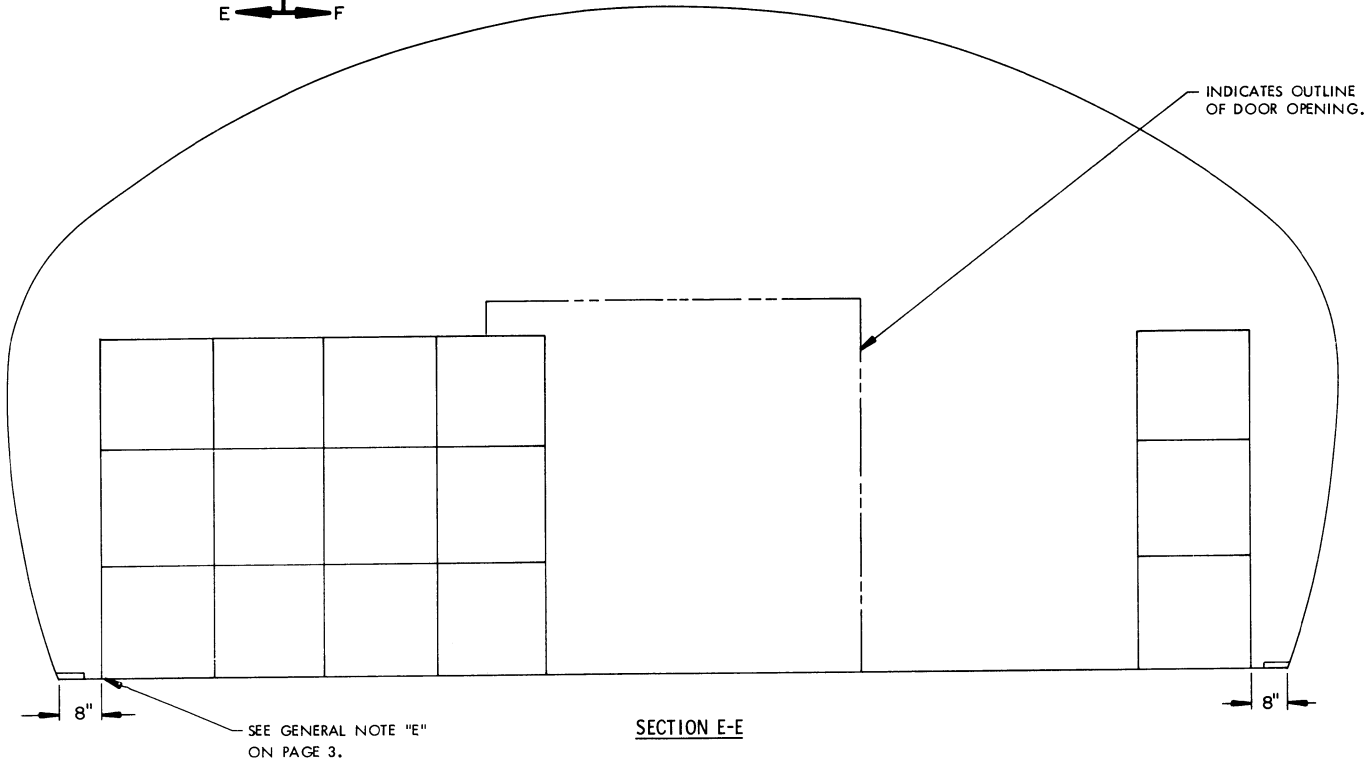
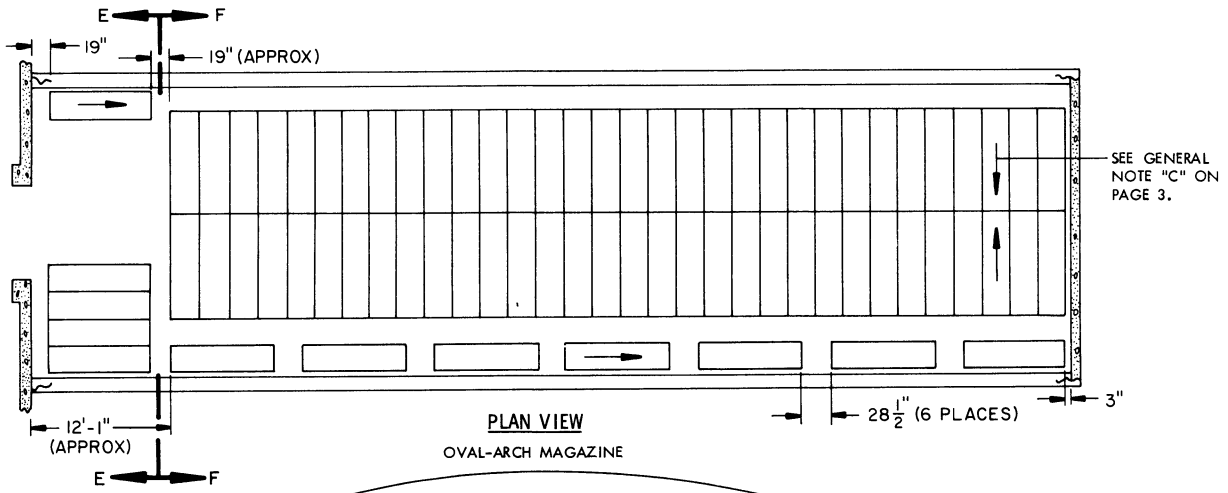
CONTAINER WITH MISSILE ----- 201



ISOMETRIC VIEW

80' STRADLEY

SEE "GENERAL NOTES" ON PAGE 3.

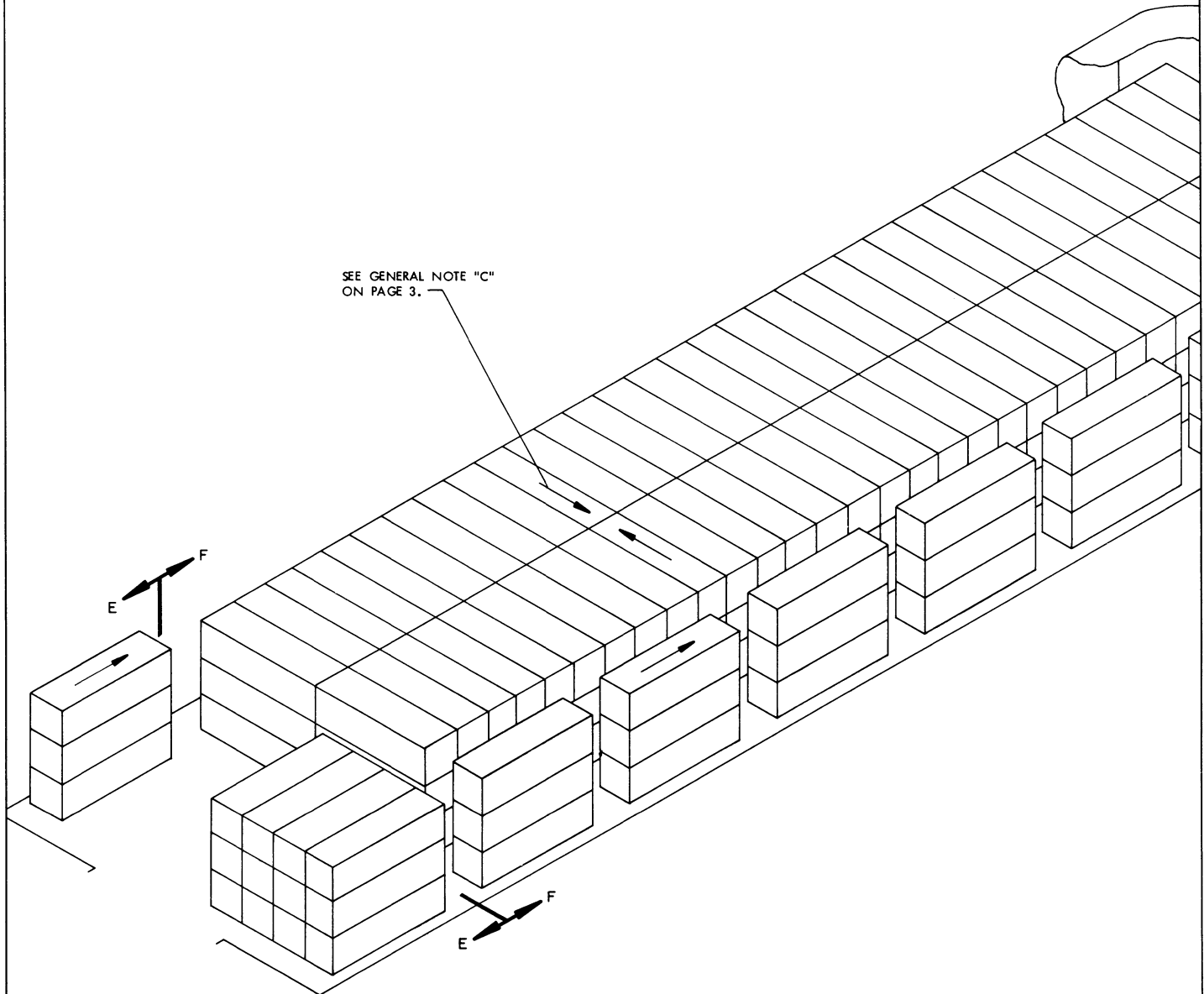


STORAGE AS SHOWN
89' OVAL-ARCH MAGAZINE

ITEM

QUANTITY

CONTAINER WITH MISSILE ----- 228



SEE GENERAL NOTE "C"
ON PAGE 3.

ISOMETRIC VIEW

89' OVAL-ARCH MAGAZINE

SEE "GENERAL NOTES" ON PAGE 3.

