

ATACMS

LOADING AND BRACING[⊕] IN END OPENING ISO CONTAINERS OF ROCKET MOTOR, M124, PACKED IN SHIPPING CRATE

INDEX

<u>ITEM</u>	<u>PAGE(S)</u>
10 UNIT LOAD - - - - -	2
GENERAL NOTES AND MATERIAL SPECIFICATIONS - - - - -	3
SEVEN UNIT LOAD - - - - -	4
CRATE DETAIL - - - - -	5
DETAILS - - - - -	5-8

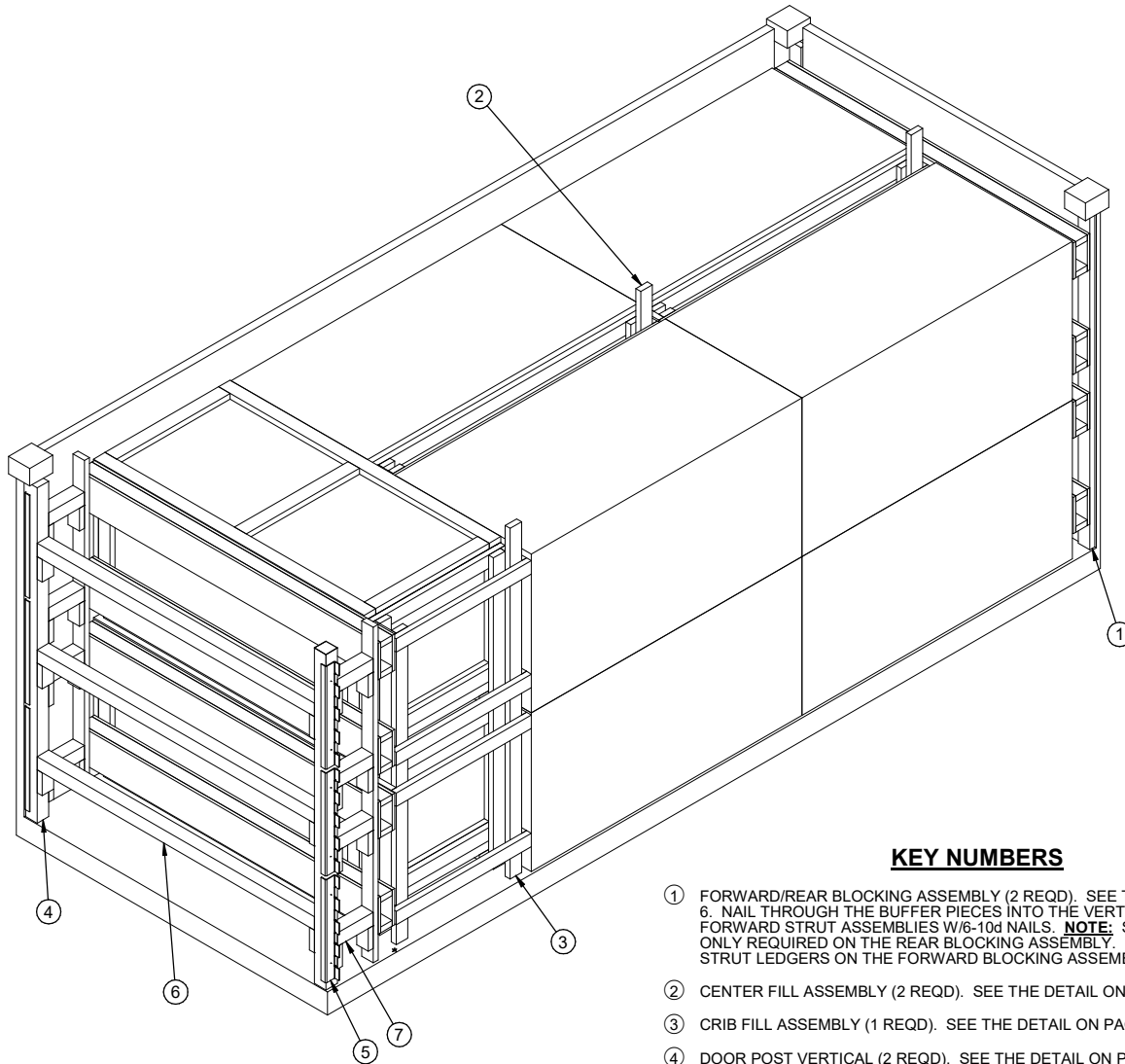
DISTRIBUTION STATEMENT A:

APPROVED FOR PUBLIC RELEASE
DISTRIBUTION IS UNLIMITED.

⊕ THE PROCEDURES SHOWN HEREIN ARE APPLICABLE TO LOADS THAT ARE TO
BE SHIPPED BY TRAILER/CONTAINER-ON-FLATCAR (T/COFC) RAIL, MOTOR, OR
WATER CARRIERS.

U.S. ARMY MATERIEL COMMAND DRAWING

APPROVED, U.S. ARMY AVIATION AND MISSILE COMMAND O'CONNOR.DOUG LAS.LEO.11405822 51 <small>Digitally signed by O'CONNOR.DOUGLAS.LEO.114 0582251 Date: 2021.08.09 07:44:31 -05'00'</small>	CAUTION: VERIFY PRIOR TO USE AT https://www.dau.edu/cop/ammo/Pages/Default.aspx THAT THIS IS THE MOST CURRENT VERSION OF THIS DOCUMENT. THIS IS PAGE 1 OF 8.										
	DO NOT SCALE		AUGUST 2021								
	ENGINEER OR TECHNICIAN	BASIC REV.	SPENCER HOVEY								
APPROVED BY ORDER OF COMMANDING GENERAL, U.S. ARMY MATERIEL COMMAND BRAILSFORD.KEITH H.ANTHONY.10286 55661 <small>Digitally signed by BRAILSFORD.KEITH.ANTHONY. 1028655661 Date: 2021.08.10 11:13:48 -05'00'</small>	ENGINEERING DIVISION	FIEFFER.LAURA .A.1230375727 <small>Digitally signed by FIEFFER.LAURA.A.1230375727 Date: 2021.08.06 08:38:21 -05'00'</small>									
	TEST REPORT	NA	FELICIANO.AD IN.1259200373 <small>Digitally signed by FELICIANO.AD.IN.1259200373 Date: 2021.08.09 07:05:00 -05'00'</small>								
U.S. ARMY DEFENSE AMMUNITION CENTER	EXPLOSIVE SAFETY DIRECTORATE	FAIRHURST.ROBE RT.JOHN.10157668 80 <small>Digitally signed by FAIRHURST.ROBERT.JOHN.101 5766880 Date: 2021.08.09 07:13:56 -05'00'</small>	<table border="1" style="width: 100%; border-collapse: collapse;"> <tr> <td style="width: 25%;">CLASS</td> <td style="width: 25%;">DIVISION</td> <td style="width: 25%;">DRAWING</td> <td style="width: 25%;">FILE</td> </tr> <tr> <td style="text-align: center;">19</td> <td style="text-align: center;">48</td> <td style="text-align: center;">8258</td> <td style="text-align: center;">GM15AT7</td> </tr> </table>	CLASS	DIVISION	DRAWING	FILE	19	48	8258	GM15AT7
CLASS	DIVISION	DRAWING	FILE								
19	48	8258	GM15AT7								



REAR OF CONTAINER

ISOMETRIC VIEW

KEY NUMBERS

- ① FORWARD/REAR BLOCKING ASSEMBLY (2 REQD). SEE THE DETAIL ON PAGE 6. NAIL THROUGH THE BUFFER PIECES INTO THE VERTICAL PIECE OF THE FORWARD STRUT ASSEMBLIES W/6-10d NAILS. **NOTE:** STRUT LEDGERS ARE ONLY REQUIRED ON THE REAR BLOCKING ASSEMBLY. DO NOT INSTALL STRUT LEDGERS ON THE FORWARD BLOCKING ASSEMBLY.
- ② CENTER FILL ASSEMBLY (2 REQD). SEE THE DETAIL ON PAGE 7.
- ③ CRIB FILL ASSEMBLY (1 REQD). SEE THE DETAIL ON PAGE 7.
- ④ DOOR POST VERTICAL (2 REQD). SEE THE DETAIL ON PAGE 8, "DETAIL A" ON PAGE 5, AND GENERAL NOTE "P" ON PAGE 3.
- ⑤ UNIVERSAL LOAD RETAINER (6 REQD, 3 PER SIDE). NAIL THROUGH THE HOLES INTO THE DOOR POST VERTICAL W/2-10d NAILS. SEE DEPARTMENT OF ARMY DRAWING DA-116, "DETAIL A" ON PAGE 5, AND GENERAL NOTE "P" ON PAGE 3.
- ⑥ DOOR SPANNER, 4" X 4" MATERIAL CUT TO A LENGTH THAT WILL PROVIDE A DRIVE FIT (REF: 7'-1-1/4") (3 REQD). TOENAIL TO THE DOOR POST VERTICAL W/2-12d NAILS AT EACH END. SEE THE "BEVEL-CUT" DETAIL ON PAGE 5.
- ⑦ STRUT, 4" X 4" BY CUT-TO-FIT (REF: 9-3/8") (8 REQD). TOENAIL TO BUFFER PIECES OF THE REAR BLOCKING ASSEMBLY AND TO THE DOOR POST VERTICAL PIECES W/2-12d NAILS AT EACH END. SEE THE "BEVEL-CUT" DETAIL ON PAGE 5.

BILL OF MATERIAL		
LUMBER	LINEAR FEET	BOARD FEET
2" X 4"	451	301
4" X 4"	42	56
NAILS	NO. REQD	POUNDS
8d (2")	384	4
10d (3")	364	5-3/4
12d (3-1/4")	76	1-1/2
PLYWOOD, 3/4" - - 96.1 SQ FT REQD - - 198.1 LBS		
UNIVERSAL LOAD RETAINER - - 6 REQD - - 39.00 LBS		

LOAD AS SHOWN

ITEM	QUANTITY	WEIGHT (APPROX)
CRATE - - - - -	10 - - - - -	25,860 LBS
DUNNAGE - - - - -	- - - - -	923 LBS
CONTAINER - - - - -	- - - - -	4,700 LBS
TOTAL WEIGHT - - - - -		31,483 LBS (APPROX)

GENERAL NOTES

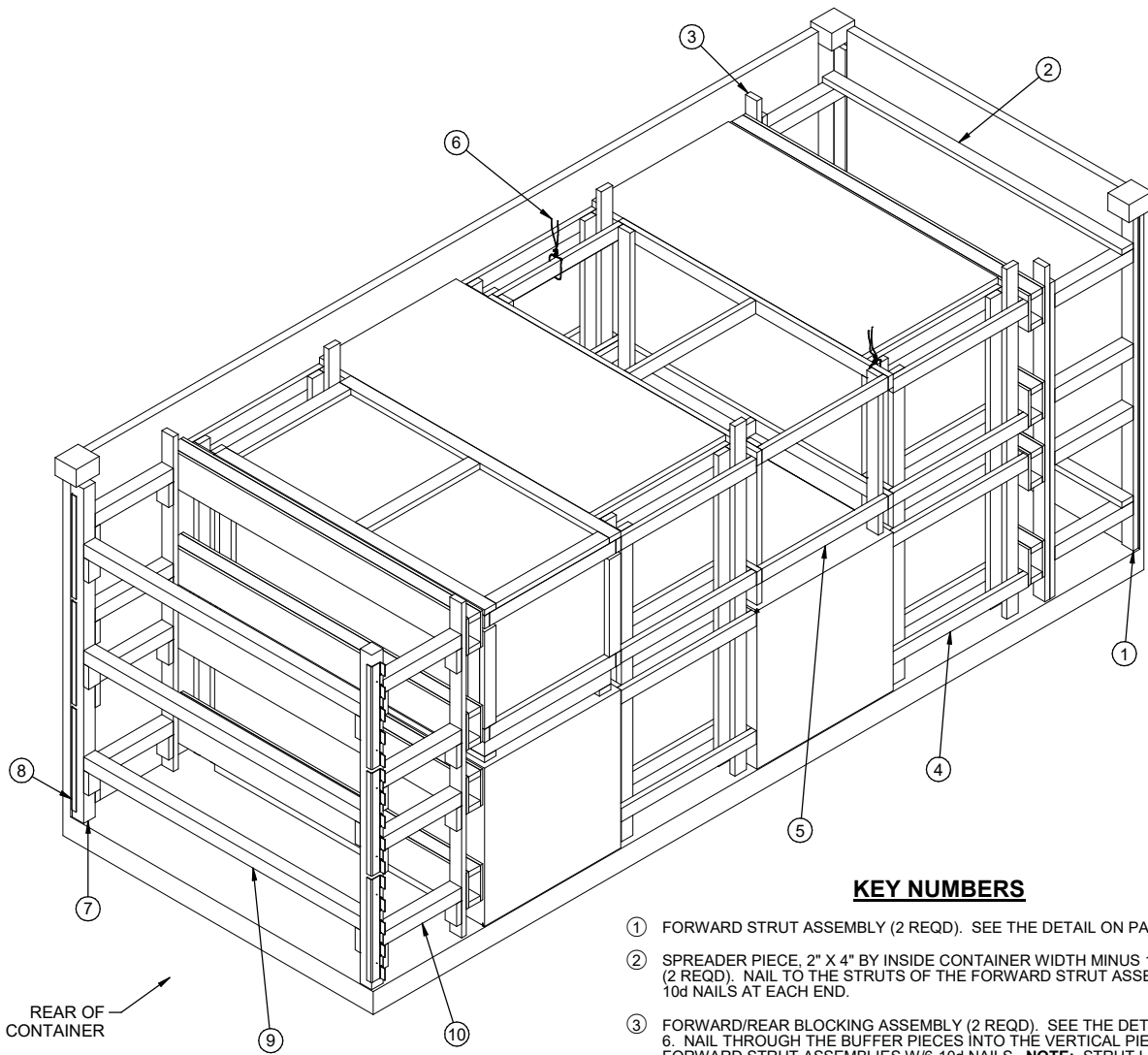
(GENERAL NOTES CONTINUED)

- A. THIS DOCUMENT HAS BEEN PREPARED AND ISSUED IN ACCORDANCE WITH AR 740-1 AND AUGMENTS TM 743-200-1 (CHAPTER 5).
- B. THE SPECIFIED OUTLOADING PROCEDURES ARE APPLICABLE TO LOADS OF ATACMS SOLID ROCKET MOTORS PACKED IN SHIPPING CRATES. SUBSEQUENT REFERENCE TO CRATE HEREIN MEANS THE CRATE WITH AMMUNITION ITEMS. SEE PAGE 4 AND ARC DRAWING CA0267005 FOR DETAILS OF THE CRATE. **CAUTION:** REGARDLESS OF THE QUANTITY OF CRATES TO BE SHIPPED, THE "MAXIMUM GROSS WEIGHT" OF THE END OPENING ISO CONTAINER MUST NOT BE EXCEEDED.
- C. THE LOAD AS SHOWN IS BASED ON A 4,700 POUND 20' LONG BY 8' WIDE BY 8'-6" HIGH END OPENING ISO CONTAINER WITH INSIDE DIMENSIONS OF 19'-4" LONG BY 92" WIDE BY 93" HIGH, WITH A MAXIMUM GROSS WEIGHT OF 52,910 POUNDS. OLDER/OTHER CONTAINERS MAY HAVE A TOTAL INSIDE HEIGHT OF 95', BUT A CLEAR HEIGHT UNDER THE ROOF BOWS OF 93', VERIFY INSIDE CONTAINER HEIGHT PRIOR TO FABRICATING DUNNAGE. THE LOAD IS DESIGNED FOR TRAILER/CONTAINER-ON-FLATCAR (T/COFC) SHIPMENT, HOWEVER, THE LOAD AS DESIGNED CAN ALSO BE MOVED BY OTHER SURFACE MODES OF TRANSPORT. **NOTICE:** OTHER CONTAINERS OF THE SAME DESIGN CONFIGURATION CAN BE USED.
- D. WHEN LOADING CRATES, THEY ARE TO BE POSITIONED SO AS TO ACHIEVE A TIGHT LOAD (TIGHT AGAINST THE DUNNAGE ASSEMBLIES). THE UNBLOCKED SPACE ACROSS THE WIDTH OF A LOAD BAY IS NOT TO EXCEED 1-1/2". EXCESSIVE SLACK CAN BE ELIMINATED FROM A LOAD BY LAMINATING ADDITIONAL PIECES OF APPROPRIATE THICKNESS TO THE HORIZONTAL PIECES ON THE CENTER OR CRIB FILL ASSEMBLIES. NAIL EACH ADDITIONAL PIECE W/1 APPROPRIATELY SIZED NAIL EVERY 12". ADDITIONALLY, THE LENGTH OF THE LATERAL PIECES IN THE CRIB OR CENTER FILL ASSEMBLIES MAY BE ADJUSTED AS REQUIRED TO FACILITATE VARIANCE IN THE SIZE OF THE CRATE. THE LOADS MUST BE AS TIGHT AS POSSIBLE LONGITUDINALLY, BUT THE VOID MUST NOT EXCEED 3/4" OVERALL. EXCESSIVE SLACK CAN BE ELIMINATED BY INCREASING THE LENGTH OF THE STRUTS.
- E. A STAGGERED NAILING PATTERN WILL BE USED WHENEVER POSSIBLE WHEN NAILS ARE DRIVEN INTO JOINTS OF DUNNAGE ASSEMBLIES OR WHEN LAMINATING DUNNAGE. ADDITIONALLY, THE NAILING PATTERN FOR AN UPPER PIECE OF LAMINATED DUNNAGE WILL BE ADJUSTED AS REQUIRED SO THAT A NAIL FOR THAT PIECE WILL NOT BE DRIVEN THROUGH ONTO OR RIGHT BESIDE A NAIL IN A LOWER PIECE.
- F. IN SOME CONTAINERS THERE IS A SLOT AT THE CORNERS OF THE FORWARD WALL. PIECES OF DUNNAGE MATERIAL MUST BE LAMINATED TO THE BUFFER PIECES ON THE FORWARD BLOCKING ASSEMBLY TO PROVIDE A FLAT SURFACE FOR THE BUFFER PIECES. A PIECE OF 2" X 4", 2" X 3" OR A SPECIAL WIDTH PIECE CUT-TO-FIT CAN BE USED. THIS FILL PIECE WILL BE NAILED WITH ONE APPROPRIATELY SIZED NAIL EVERY 12". NOTE THAT SOME CONTAINERS ARE EQUIPPED WITH "TIE-BARS" IN THE CORNER SLOT, WHICH PRECLUDE THE USE OF A FULL HEIGHT FILL PIECE. WHEN "TIE-BARS" ARE PRESENT, THE FILL PIECE MUST BE INSTALLED IN SEGMENTS DESIGNED TO FIT BETWEEN THE "TIE-BARS" VERTICALLY. THE FILL PIECE(S) IS NOT REQUIRED WHEN THE CORNER PORTIONS OF THE CONTAINER FORWARD WALL ARE SMOOTH AND FLAT. DO NOT ALLOW ANY DUNNAGE ASSEMBLY TO CONTACT THE CONTAINER FORWARD WALL, ONLY THE CORNER POSTS OF THE CONTAINER SHOULD BE USED FOR FORWARD LONGITUDINAL BLOCKING.
- G. WHETHER A CONTAINER IS FULL OR IS LOADED WITH A REDUCED QUANTITY OF LADING UNITS, THE LENGTHWISE CENTER OF GRAVITY OF THE LOAD MUST BE WITHIN 12", IN EITHER DIRECTION, OF THE MID-POINT OF THE CONTAINER.
- H. **CAUTION:** DO NOT NAIL DUNNAGE MATERIAL TO THE CONTAINER WALLS OR FLOOR. ALL NAILING WILL BE WITHIN THE DUNNAGE.
- J. PORTIONS OF THE CONTAINER DEPICTED WITHIN THIS DRAWING, SUCH AS THE SIDEWALL, HAVE NOT BEEN SHOWN IN THE LOAD VIEWS FOR CLARITY PURPOSES.
- K. **MAXIMUM LOAD WEIGHT CRITERIA:**
THE MAXIMUM LOAD WEIGHTS ARE CONTROLLED BY EQUIPMENT CAPABILITY FACTORS. ALTHOUGH THE HEAVIEST MAXIMUM LOADS ARE DELINEATED IN THE LOAD VIEWS, PROVISIONS ARE INCLUDED WITHIN THIS DRAWING SO THAT THE BASIC LOADS CAN BE ADJUSTED TO SATISFY A LESSER QUANTITY OF LADING UNITS. DEPENDING ON TRANSPORTATION ROUTING, IT MAY BE NECESSARY TO REDUCE THE LOAD WEIGHT TO SATISFY "WEIGHT LAWS" OF CERTAIN STATES. ALSO, IT MAY BE NECESSARY TO REDUCE THE LOAD WEIGHT TO SATISFY OTHER WEIGHT RESTRICTIONS IMPOSED ON THE INTERMODAL CONTAINER SYSTEM.
- L. REQUIREMENTS CITED WITHIN THE ASSOCIATION OF AMERICAN RAILROADS (AAR) INTERMODAL LOADING GUIDE APPLY WHEN THE SHIPMENT MOVES BY TRAILER/CONTAINER-ON-FLATCAR (T/COFC). SPECIAL T/COFC NOTES FOLLOW:
 1. A LOADED CONTAINER MUST BE ON A CHASSIS EQUIPPED WITH TWO BOGIE ASSEMBLIES WHEN BEING MOVED IN TOFC SERVICE.
 2. THE LOAD LIMIT OF A T/COFC RAILCAR MUST NOT BE EXCEEDED, NOR WILL A CAR BE LOADED SO THAT THE TRUCK UNDER ONE END OF THE CAR CARRIES MORE THAN ONE-HALF OF THE LOAD LIMIT FOR THAT CAR.
- M. DURING INTRASTATE AND/OR INTERSTATE MOVES BY MOTOR CARRIER, A PROPER CHASSIS OR MODIFIED FLATBED TRAILER MUST BE USED TO PRECLUDE VIOLATION OF ONE OR MORE "WEIGHT LAWS" APPLICABLE TO THE STATE OR STATES INVOLVED.
- N. CONVERSION TO METRIC EQUIVALENTS: DIMENSIONS WITHIN THIS DOCUMENT ARE EXPRESSED IN INCHES AND WEIGHTS ARE EXPRESSED IN POUNDS. WHEN NECESSARY, THE METRIC EQUIVALENTS MAY BE COMPUTED ON THE BASIS OF ONE INCH EQUALS 25.4MM AND ONE POUND EQUALS 0.454 KG.
- O. THE QUANTITY OF CRATES SHOWN IN THE LOAD ON PAGE 2 MAY BE REDUCED FOR SHIPMENT, IF DESIRED. SEE THE FILLER ASSEMBLY ON PAGE 8 AND THE LOAD ON PAGE 4.
 1. IF A LOAD IS REDUCED BY ONLY A SMALL AMOUNT (ONE OR TWO LADING UNITS), LADING UNITS NORMALLY MAY BE ELIMINATED FROM THE CENTER OF THE LOAD.
 2. IF A LOAD IS REDUCED BY A LARGE AMOUNT (MORE THAN TWO LADING UNITS), LADING UNITS SHOULD BE ELIMINATED AS REQUIRED AND THE TOTAL LOAD SHIFTED FORE OR AFT, AS NECESSARY, TO ACHIEVE A SYMMETRICAL WEIGHT DISTRIBUTION. THE DEPICTED PROCEDURES WILL BE FOLLOWED AS CLOSELY AS POSSIBLE, MAKING ONLY THOSE ADJUSTMENTS TO THE DUNNAGE WHICH ARE REQUIRED TO ACCOMMODATE THE NUMBER OF UNITS TO BE SHIPPED.
- P. SIX UNIVERSAL LOAD RETAINERS, AS DEPICTED IN THE LOADS ON PAGES 2 AND 4, ARE REQUIRED WHEN LOADING TWO LAYERS OF WOODEN CRATES. FOUR ARE REQUIRED WHEN LOADING A ONE LAYER LOAD. REFER TO DAC DRAWING ACV00682 FOR DETAILS OF THE UNIVERSAL LOAD RETAINER CONSTRUCTION, AND TO DEPARTMENT OF THE ARMY DRAWING DA-116 FOR DETAILS FOR INSTALLATION TO THE DOOR POST VERTICAL, PLACEMENT INTO THE CONTAINER, AND FOR OTHER METHODS OF REAR-OF-LOAD RESTRAINT.
- Q. DUNNAGE LUMBER SPECIFIED IS OF NOMINAL SIZE. FOR EXAMPLE, 1" X 4" MATERIAL IS ACTUALLY 3/4" THICK BY 3-1/2" WIDE AND 2" X 6" MATERIAL IS ACTUALLY 1-1/2" THICK BY 5-1/2" WIDE.
- R. RECOMMENDED SEQUENTIAL LOADING PROCEDURES:
 1. PREFABRICATE TWO FORWARD/REAR BLOCKING ASSEMBLIES, TWO CENTER FILL ASSEMBLIES, AND ONE CRIB FILL ASSEMBLY.
 2. INSTALL THE FORWARD BLOCKING ASSEMBLY.
 3. LOAD TWO CRATES, INSTALL ONE CENTER FILL ASSEMBLY, AND LOAD TWO MORE CRATES.
 4. REPEAT STEP 4.
 5. LOAD TWO CRATES.
 6. INSTALL CRIB FILL ASSEMBLY.
 7. INSTALL REAR BLOCKING ASSEMBLY.
 8. INSTALL TWO DOOR POST VERTICALS WITH UNIVERSAL LOAD RETAINERS.
 9. INSTALL DOOR SPANNERS.
 10. INSTALL STRUTS.

MATERIAL SPECIFICATIONS

- LUMBER** - - - - - : SEE TM 743-200-1 (DUNNAGE LUMBER) AND VOLUNTARY PRODUCT STANDARD PS 20.
- NAILS** - - - - - : ASTM F1667; COMMON STEEL NAIL (NLCMS OR NLCMS).
- PLYWOOD** - - - - - : COMMERCIAL ITEM DESCRIPTION A-A-55057, INDUSTRIAL PLYWOOD, INTERIOR WITH EXTERIOR GLUE, GRADE C-D. IF SPECIFIED GRADE IS NOT AVAILABLE, A BETTER INTERIOR OR AN EXTERIOR GRADE MAY BE SUBSTITUTED.
- WIRE, CARBON STEEL** - - - - - : ASTM A853; ANNEALED AT FINISH, BLACK OXIDE FINISH, 0.0800" DIA, GRADE 1006 OR BETTER.
- STEEL, STRUCTURAL** - - - - - : ASTM A36; 36,000 PSI MINIMUM YIELD OR BETTER.

(CONTINUED AT RIGHT)



REAR OF CONTAINER

ISOMETRIC VIEW

KEY NUMBERS

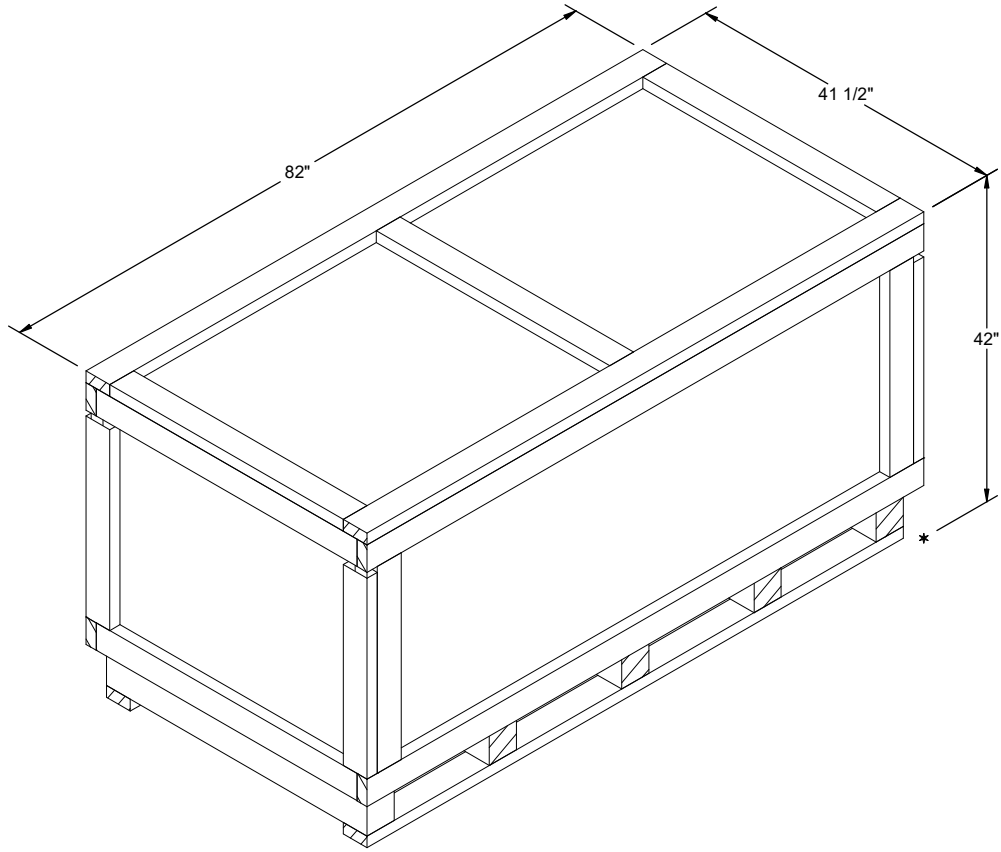
- ① FORWARD STRUT ASSEMBLY (2 REQD). SEE THE DETAIL ON PAGE 6.
- ② SPREADER PIECE, 2" X 4" BY INSIDE CONTAINER WIDTH MINUS 1" (REF: 7'-7") (2 REQD). NAIL TO THE STRUTS OF THE FORWARD STRUT ASSEMBLIES W/2-10d NAILS AT EACH END.
- ③ FORWARD/REAR BLOCKING ASSEMBLY (2 REQD). SEE THE DETAIL ON PAGE 6. NAIL THROUGH THE BUFFER PIECES INTO THE VERTICAL PIECE OF THE FORWARD STRUT ASSEMBLIES W/6-10d NAILS. **NOTE:** STRUT LEDGERS ARE ONLY REQUIRED ON THE REAR BLOCKING ASSEMBLY. DO NOT INSTALL STRUT LEDGERS ON THE FORWARD BLOCKING ASSEMBLY.
- ④ CRIB FILL ASSEMBLY (4 REQD). SEE THE DETAIL ON PAGE 7.
- ⑤ FILLER ASSEMBLY (1 REQD). SEE THE DETAIL ON PAGE 8.
- ⑥ TIE WIRE, .0800" DIA BY 24" LONG (2 REQD). INSTALL TO FORM A COMPLETE LOOP AROUND THE FILLER ASSEMBLY AND THE CRIB FILL ASSEMBLY. BRING ENDS TOGETHER AND TWIST TAUT.
- ⑦ DOOR POST VERTICAL (2 REQD). SEE THE DETAIL ON PAGE 8, "DETAIL A" ON PAGE 5, AND GENERAL NOTE "P" ON PAGE 3.
- ⑧ UNIVERSAL LOAD RETAINER (6 REQD, 3 PER SIDE). NAIL THROUGH THE HOLES INTO THE DOOR POST VERTICAL W/2-10d NAILS. SEE DEPARTMENT OF ARMY DRAWING DA-116, "DETAIL A" ON PAGE 5, AND GENERAL NOTE "P" ON PAGE 3.
- ⑨ DOOR SPANNER, 4" X 4" MATERIAL CUT TO A LENGTH THAT WILL PROVIDE A DRIVE FIT (REF: 7'-1-1/4") (3 REQD). TOENAIL TO THE DOOR POST VERTICAL W/2-12d NAILS AT EACH END. SEE THE "BEVEL-CUT" DETAIL ON PAGE 5.
- ⑩ STRUT, 4" X 4" BY CUT-TO-FIT (REF: 23-3/4") (8 REQD). TOENAIL TO BUFFER PIECES OF THE REAR BLOCKING ASSEMBLY AND TO THE DOOR POST VERTICAL PIECES W/2-12d NAILS AT EACH END. SEE THE "BEVEL-CUT" DETAIL ON PAGE 5.

BILL OF MATERIAL

LUMBER	LINEAR FEET	BOARD FEET
2" X 4"	497	332
4" X 4"	68	90
NAILS	NO. REQD	POUNDS
8d (2")	384	4
10d (3")	380	6
12d (3-1/4")	76	1-1/2
PLYWOOD, 3/4" - -	96.1 SQ FT REQD - -	198.1 LBS
WIRE, .0800" DIA - - - - -	4' REQD - -	0.07 LBS
UNIVERSAL LOAD RETAINER - -	6 REQD - -	39.00 LBS

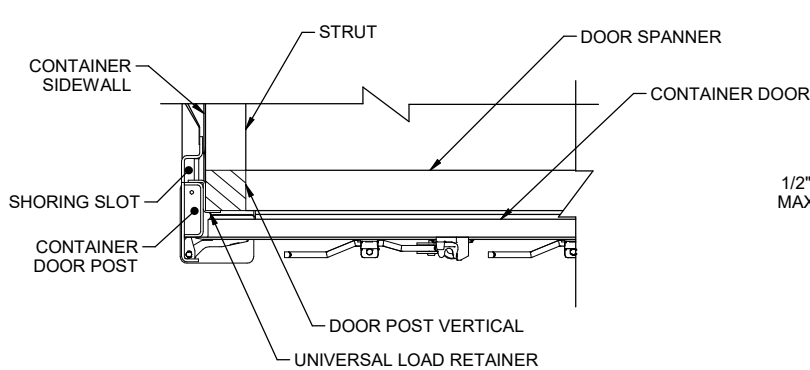
LOAD AS SHOWN

ITEM	QUANTITY	WEIGHT (APPROX)
CRATE - - - - -	7 - - - - -	18,102 LBS
DUNNAGE - - - - -	- - - - -	1,053 LBS
CONTAINER - - - - -	- - - - -	4,700 LBS
TOTAL WEIGHT - - - - -		23,855 LBS (APPROX)



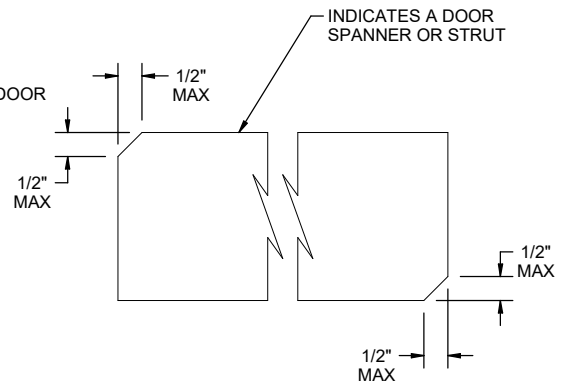
SHIPPING CRATE DATA

GROSS WEIGHT - - - - - 2,586 LBS
 CUBE - - - - - 82.7 CU FT



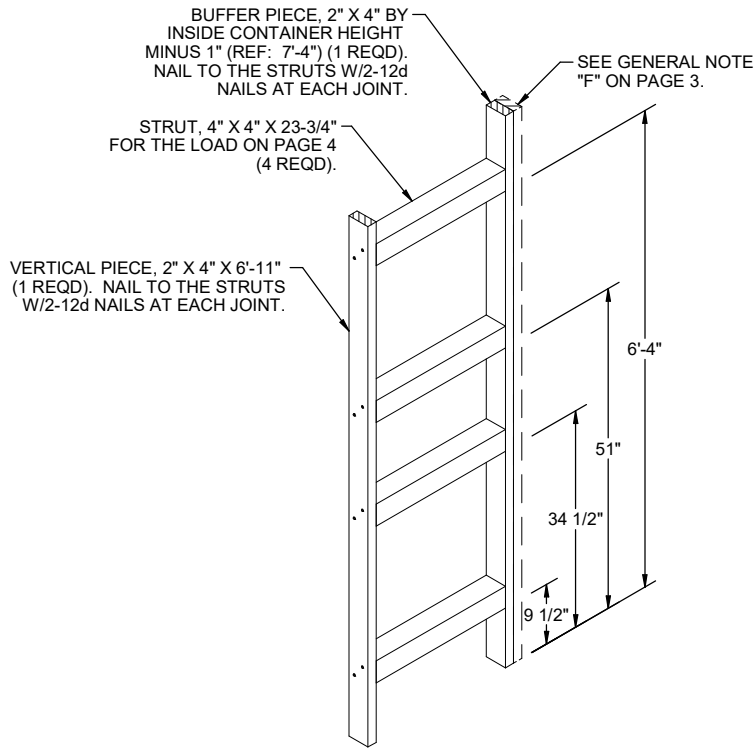
DETAIL A

A PARTIAL PLAN VIEW OF THE LEFT REAR PORTION OF THE CONTAINER IS SHOWN DEPICTING THE PROPER POSITION OF THE DOOR POST VERTICAL, UNIVERSAL LOAD RETAINER, AND ADJACENT DUNNAGE PIECES. REFER TO THE LOADS ON PAGES 2 AND 4.

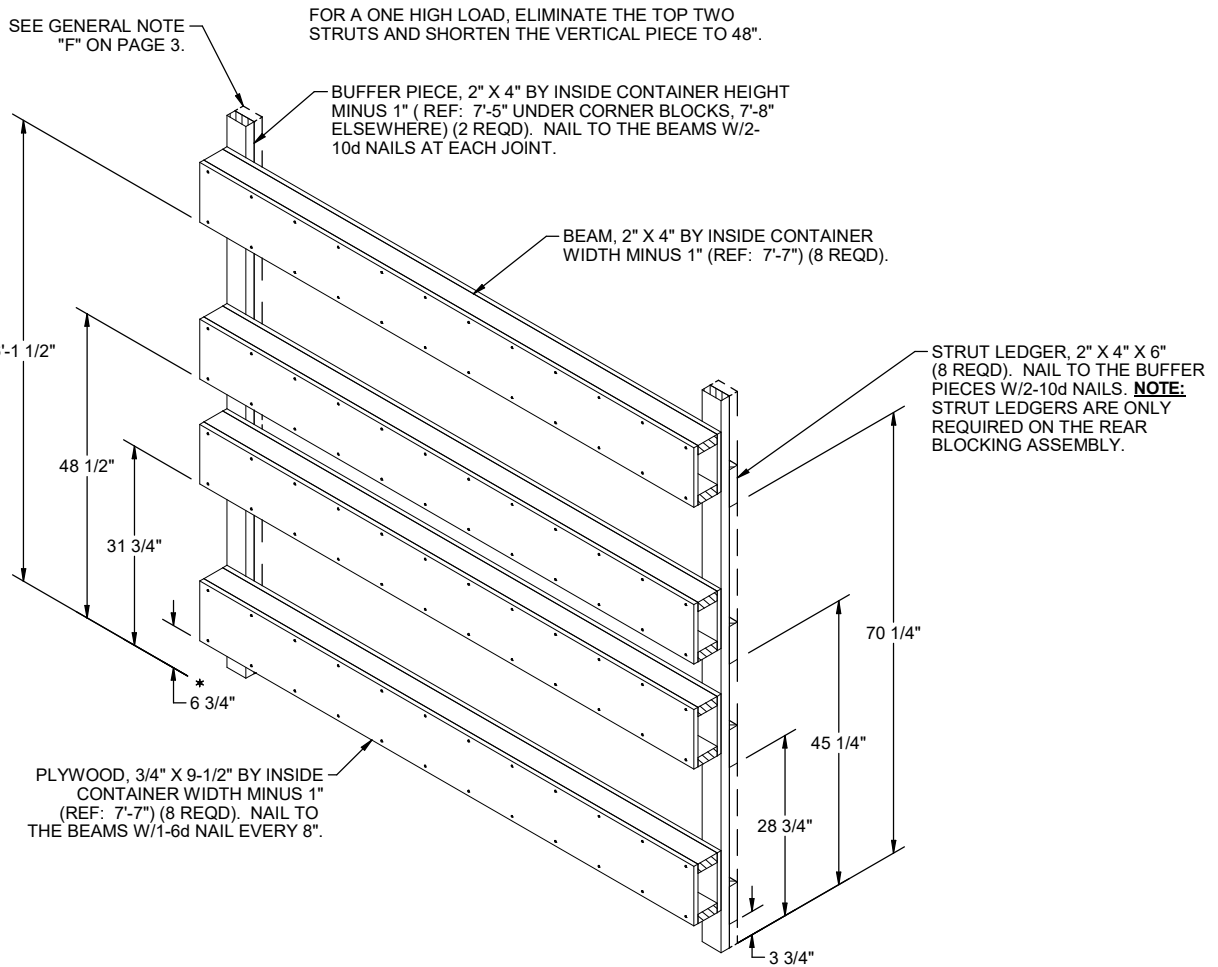


BEVEL CUT

IF DESIRED, EACH END OF A STRUT OR DOOR SPANNER MAY BE BEVEL-CUT AS SHOWN ABOVE TO FACILITATE INSTALLING THE STRUTS WITH A "DRIVE" FIT.

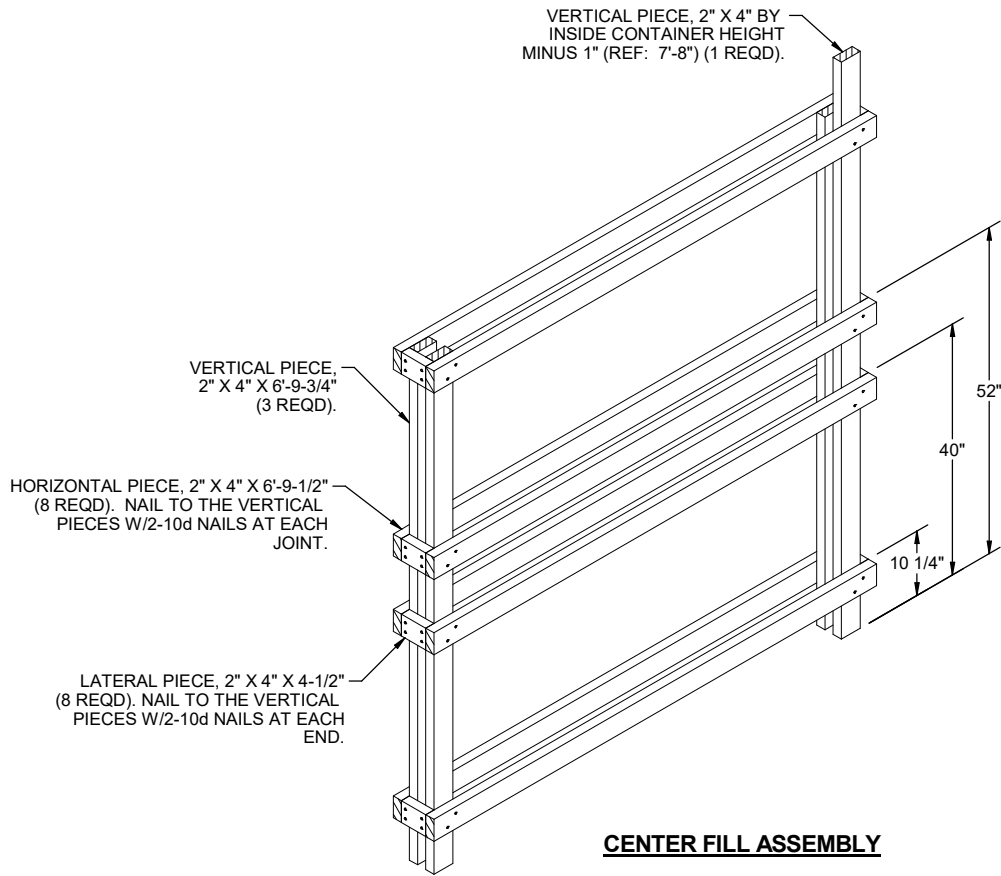


FORWARD STRUT ASSEMBLY



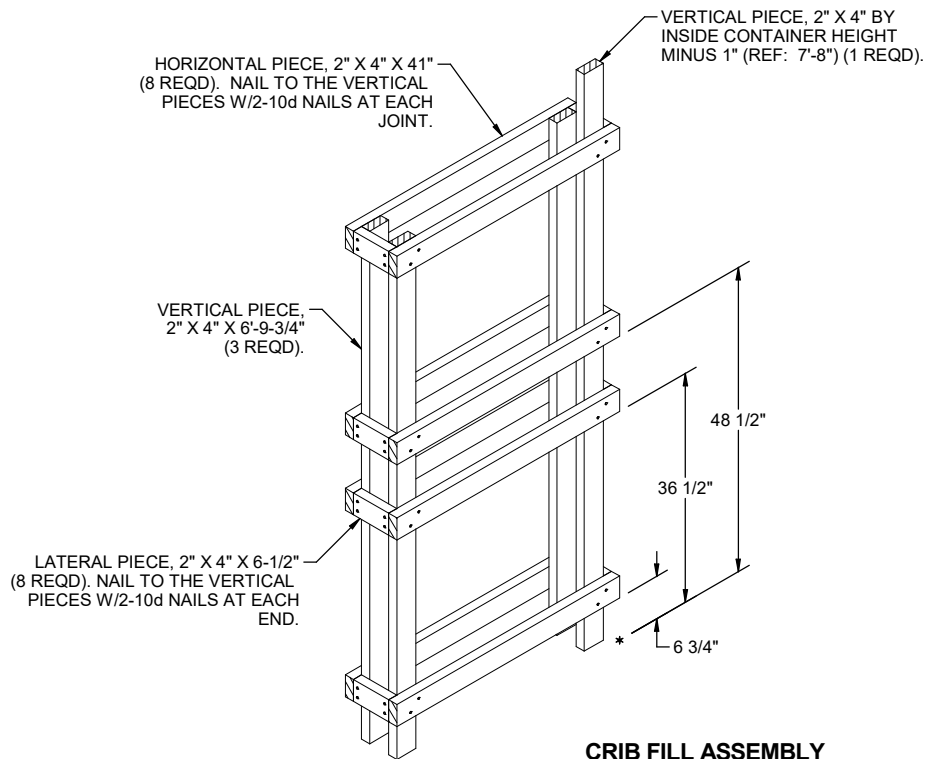
FORWARD/REAR BLOCKING ASSEMBLY

FOR A ONE HIGH LOAD, ELIMINATE THE TOP TWO BOX BEAM ASSEMBLIES.




CENTER FILL ASSEMBLY

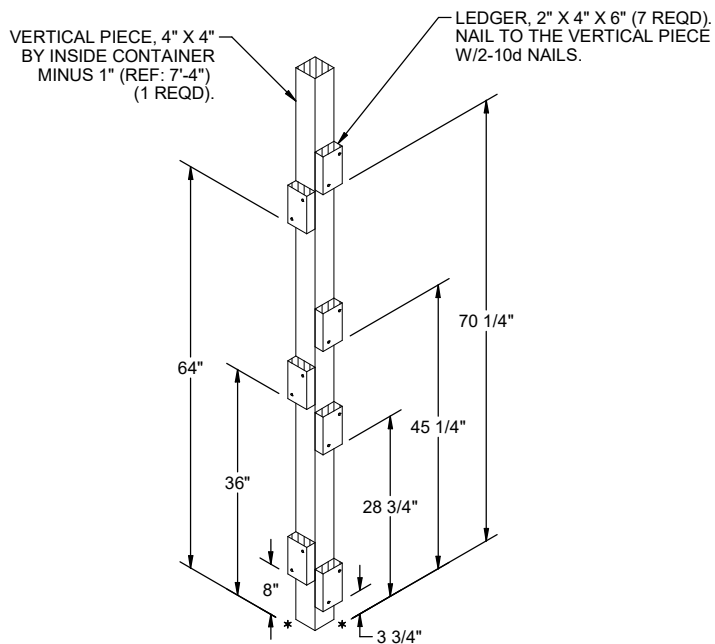
FOR A ONE HIGH LOAD, ELIMINATE THE TOP FOUR HORIZONTAL AND LATERAL PIECES, AND SHORTEN THREE 6'-9-3/4" VERTICAL PIECES TO 40".



CRIB FILL ASSEMBLY

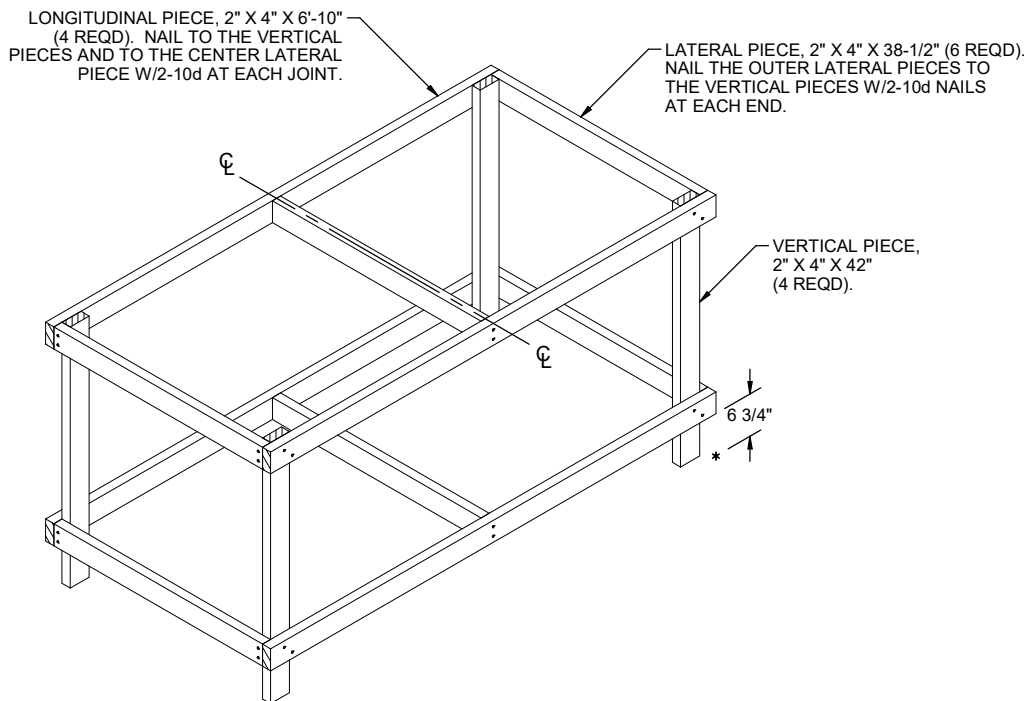
FOR A ONE HIGH LOAD, ELIMINATE THE TOP FOUR HORIZONTAL AND LATERAL PIECES, AND SHORTEN THREE 6'-9-3/4" VERTICAL PIECES TO 40".


 ROTATED 90° FROM THE ISOMETRIC VIEWS SHOWN ON PAGE 2 AND 4.



DOOR POST VERTICAL

A MINIMUM OF TWO DOOR SPANNERS ARE REQUIRED FOR A REDUCED LOAD. FOR A ONE HIGH LOAD, ELIMINATE THE TOP LEDGER.



FILLER ASSEMBLY

THE ASSEMBLY DEPICTED ABOVE IS FOR USE IN PLACE OF AN OMITTED CRATE.