

APPROVED BY  
BUREAU OF EXPLOSIVES

*J. H. Hoshman*

DATE 5/13/94

TOW

LOADING AND BRACING • WITH WOODEN  
DUNNAGE IN SIDE OPENING ISO  
CONTAINERS OF GUIDED MISSILES,  
PACKED ONE PER WIREBOUND BOX,  
PALLETIZED AND UNPALLETIZED

INDEX

<u>ITEM</u>	<u>PAGE(S)</u>
GENERAL NOTES AND MATERIAL SPECIFICATIONS - - - - -	2
CONTAINER AND PALLET UNIT DETAILS - - - - -	3
PALLETIZED LOAD (4-WIDE BY 3-HIGH UNIT) - - - - -	4, 5
PALLETIZED LOAD (3-WIDE BY 4-HIGH UNIT) - - - - -	6, 7
UNPALLETIZED LOAD - - - - -	8, 9
DETAILS - - - - -	10-16

- LOADING AND BRACING SPECIFICATIONS SET FORTH WITHIN THIS DRAWING ARE APPLICABLE TO LOADS THAT ARE TO BE SHIPPED BY TRAILER/CONTAINER-ON-FLATCAR (T/COFC) RAIL CARRIER SERVICE. THESE SPECIFICATIONS MAY ALSO BE USED FOR LOADS THAT ARE TO BE MOVED BY MOTOR OR WATER CARRIERS.

**U.S. ARMY MATERIEL COMMAND DRAWING**

APPROVED, U.S. ARMY MISSILE COMMAND

*Edward R. Lytle*

DRAFTSMAN

TECHNICIAN

ENGINEER

G. GUAY

APPROVED BY ORDER OF COMMANDING GENERAL, U.S.  
ARMY MATERIEL COMMAND

*John L. Snyder*

U.S. ARMY DEFENSE AMMUNITION CENTER AND SCHOOL

VALIDATION  
ENGINEERING  
DIVISION

TRANSPORTATION  
ENGINEERING  
DIVISION

LOGISTICS  
ENGINEERING  
OFFICE

*JAN W. Inerich* *W. F. Emet*

DECEMBER 1993

CLASS

DIVISION

DRAWING

FILE

19

48

8206

GM15T04

DO NOT SCALE

## GENERAL NOTES

- A. THIS DOCUMENT HAS BEEN PREPARED AND ISSUED IN ACCORDANCE WITH AR 740-1 AND AUGMENTS TM 743-200-1 (CHAPTER 5).
- B. THE UNLOADING PROCEDURES SPECIFIED IN THIS DRAWING ARE APPLICABLE TO THE TOW GUIDED MISSILE PACKED ONE PER WIREBOUND CONTAINER (OVERPACK). SUBSEQUENT REFERENCE TO CONTAINER HEREIN MEANS THE CONTAINER WITH MISSILE COMPONENTS. SUBSEQUENT REFERENCE TO PALLET UNIT MEANS THE 3-WIDE BY 4-HIGH PALLET UNIT OR THE 4-WIDE BY 3-HIGH PALLET UNIT WITH CONTENTS. CAUTION: REGARDLESS OF THE QUANTITY OF UNITS TO BE SHIPPED, THE "MAXIMUM GROSS WEIGHT" OF THE CONTAINER MUST NOT BE EXCEEDED.
- C. FOR DETAILS OF THE WIREBOUND CONTAINER, SEE DRAWING NO. 10224699 AND THE "WIREBOUND CONTAINER" DETAIL ON PAGE 3.
- CONTAINER DIMENSIONS - - - - 58-1/2" LONG X 11-5/8" WIDE  
X 11-5/8" HIGH (APPROX).  
GROSS WEIGHT - - - - - 87 POUNDS (APPROX).  
CUBE - - - - - 4.9 CUBIC FEET.
- D. FOR DETAILS OF THE PALLETIZED UNITS, SEE U.S. ARMY MATERIEL COMMAND DRAWING NO. 19-48-5229-GM20T01 AND THE "PALLET UNIT" DETAILS ON PAGE 3.
- 3-WIDE BY 4-HIGH PALLET  
UNIT DIMENSIONS - - - - - 35-1/4" LONG X 58-1/4" WIDE  
X 51-1/4" HIGH (APPROX).  
GROSS WEIGHT - - - - - 1,112 POUNDS (APPROX).  
CUBE - - - - - 60.9 CUBIC FEET (APPROX).
- 4-WIDE BY 3-HIGH PALLET  
UNIT DIMENSIONS - - - - - 58-1/4" LONG X 48" WIDE X  
39-3/4" HIGH (APPROX).  
GROSS WEIGHT - - - - - 1,126 POUNDS (APPROX).  
CUBE - - - - - 64.3 CUBIC FEET (APPROX).
- E. THESE PROCEDURES CAN ALSO BE UTILIZED FOR THE SHIPMENT OF THE CONTAINERS WHEN THEY ARE LOADED WITH AN ITEM OTHER THAN THE SPECIFIED GUIDED MISSILE, OR WHEN THEY ARE EMPTY.
- F. THE LOADS AS SHOWN ARE BASED ON 6,050 POUND 20' LONG BY 8' WIDE BY 8'-6" HIGH SIDE OPENING ISO CONTAINER WITH INSIDE DIMENSIONS OF 19'-4" LONG BY 89" WIDE BY 88" HIGH AND A MAXIMUM GROSS WEIGHT OF 52,910 POUNDS. THE LOAD IS DESIGNED FOR TRAILER/CONTAINER-ON-FLATCAR (T/COFC) SHIPMENT, HOWEVER, THE LOAD AS DESIGNED CAN ALSO BE MOVED BY MOTOR OR WATER CARRIERS. NOTICE: OTHER CONTAINERS OF THE SAME DESIGN CONFIGURATION CAN ALSO BE USED.
- G. WHEN LOADING THE UNITS, THEY ARE TO BE POSITIONED SO AS TO ACHIEVE A TIGHT LOAD (TIGHT AGAINST THE DUNNAGE ASSEMBLIES). THE UNBLOCKED SPACE ACROSS THE WIDTH OF A LOAD BAY IS NOT TO EXCEED 1-1/2". EXCESSIVE SLACK CAN BE ELIMINATED FROM A LOAD BY LAMINATING ADDITIONAL PIECES OF APPROPRIATE THICKNESS TO THE DUNNAGE ASSEMBLIES. NAIL EACH ADDITIONAL PIECE W/1 APPROPRIATELY SIZED NAIL EVERY 12". ADDITIONALLY, THE THICKNESS AND QUANTITY OF THE DUNNAGE LUMBER USED MAY BE ADJUSTED AS REQUIRED TO FACILITATE VARIANCE IN THE SIZE OF THE LADING UNIT.
- H. DUNNAGE LUMBER SPECIFIED IS OF NOMINAL SIZE. FOR EXAMPLE, 1" X 4" MATERIAL IS ACTUALLY 3/4" THICK BY 3-1/2" WIDE AND 4" X 4" MATERIAL IS ACTUALLY 3-1/2" THICK BY 3-1/2" WIDE.
- J. A STAGGERED NAILING PATTERN WILL BE USED WHENEVER POSSIBLE WHEN NAILS ARE DRIVEN INTO JOINTS OF DUNNAGE ASSEMBLIES OR WHEN LAMINATING DUNNAGE. ADDITIONALLY, THE NAILING PATTERN FOR AN UPPER PIECE OF LAMINATED DUNNAGE WILL BE ADJUSTED AS REQUIRED SO THAT A NAIL FOR THAT PIECE WILL NOT BE DRIVEN THROUGH ONTO OR RIGHT BESIDE A NAIL IN A LOWER PIECE.

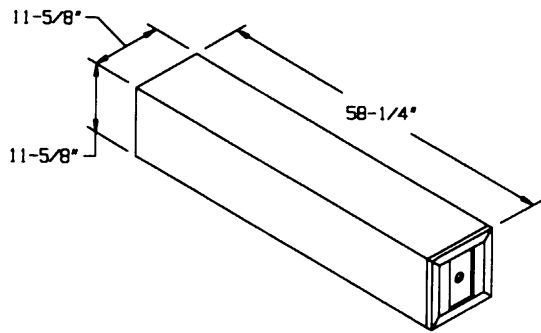
(CONTINUED AT RIGHT)

## MATERIAL SPECIFICATIONS

- LUMBER - - - - - : SEE TM 743-200-1 (DUNNAGE LUMBER) AND  
FED SPEC MM-L-751.
- NAILS - - - - - : FED SPEC FF-N-105; COMMON.
- PLYWOOD - - - - - : COMMERCIAL ITEM DESCRIPTION A-A-55057,  
TYPE A, CONSTRUCTION AND INDUSTRIAL  
PLYWOOD, INTERIOR WITH EXTERIOR GLUE,  
GRADE C-D. IF SPECIFIED GRADE IS NOT  
AVAILABLE, A BETTER INTERIOR OR AN  
EXTERIOR GRADE MAY BE SUBSTITUTED.

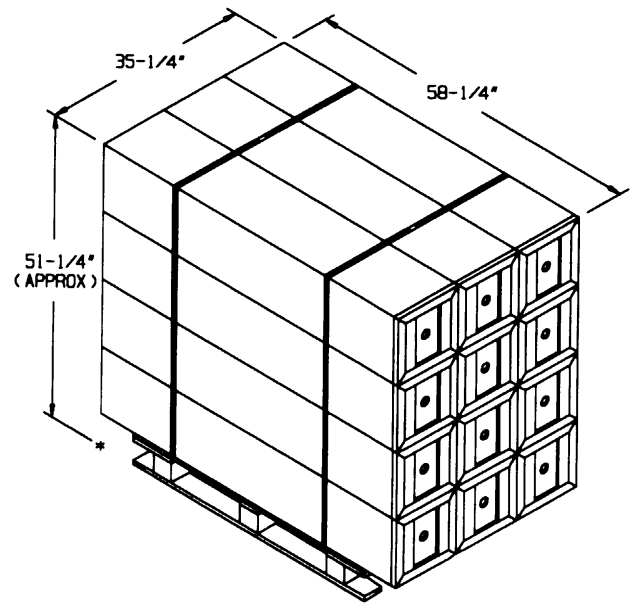
## (GENERAL NOTES CONTINUED)

- K. IN SOME CONTAINERS THERE IS A SLOT AT THE CORNERS OF THE ENDWALLS. A PIECE OF DUNNAGE MATERIAL MUST BE LAMINATED TO THE BUFFER PIECES OF END BLOCKING ASSEMBLY "C" TO PROVIDE A FLAT SURFACE FOR THE 2" X 4" BUFFER PIECES. A PIECE OF 2" X 4", 2" X 3", OR A SPECIAL WIDTH PIECE CUT-TO-FIT CAN BE USED. THIS FILL PIECE WILL BE NAILED WITH ONE APPROPRIATELY SIZED NAIL EVERY 12". THIS PIECE IS NOT REQUIRED WHEN THE ENDWALL OF THE CONTAINER IS SMOOTH AND FLAT.
- L. CAUTION: DO NOT NAIL DUNNAGE MATERIAL TO THE CONTAINER WALLS OR FLOOR. ALL NAILING WILL BE WITHIN THE DUNNAGE.
- M. PORTIONS OF THE CONTAINER DEPICTED WITHIN THIS DRAWING, SUCH AS THE SIDE DOORS, HAVE NOT BEEN SHOWN IN THE LOAD VIEW FOR CLARITY PURPOSES.
- N. CONVERSION TO METRIC EQUIVALENTS: DIMENSIONS WITHIN THIS DOCUMENT ARE EXPRESSED IN INCHES AND WEIGHTS ARE EXPRESSED IN POUNDS. WHEN NECESSARY, THE METRIC EQUIVALENTS MAY BE COMPUTED ON THE BASIS OF ONE INCH EQUALS 25.4MM AND ONE POUND EQUALS 0.454 KG.
- O. REQUIREMENTS CITED WITHIN THE BUREAU OF EXPLOSIVES PAMPHLET BC APPLY WHEN THE SHIPMENT MOVES BY TRAILER/CONTAINER-ON-FLATCAR (T/COFC). SPECIAL T/COFC NOTES FOLLOW:
1. A LOADED CONTAINER MUST BE ON A CHASSIS EQUIPPED WITH TWO BOGIE ASSEMBLIES WHEN BEING MOVED IN TOFC SERVICE.
  2. THE LOAD LIMIT OF A T/COFC RAILCAR MUST NOT BE EXCEEDED, NOR WILL A CAR BE LOADED SO THAT THE TRUCK UNDER ONE END OF THE CAR CARRIES MORE THAN ONE-HALF OF THE LOAD LIMIT FOR THAT CAR.
- P. DURING INTRASTATE AND/OR INTERSTATE MOVES BY MOTOR CARRIER, A PROPER CHASSIS OR MODIFIED FLATBED TRAILER MUST BE USED TO PRECLUDE VIOLATION OF ONE OR MORE "WEIGHT LAWS" APPLICABLE TO THE STATE OR STATES INVOLVED.
- Q. THE QUANTITY OF LADING UNITS SHOWN IN THE LOADS MAY BE REDUCED FOR SHIPMENT, IF DESIRED. WHEN A CONTAINER IS TO BE LOADED WITH A REDUCED QUANTITY OF LADING UNITS, THE LENGTHWISE CENTER OF GRAVITY OF THE LOAD MUST BE WITHIN 12", IN EITHER DIRECTION, OF THE MID-POINT OF THE CONTAINER.
1. IF THE LOAD ON PAGE 4 IS TO BE REDUCED, SEE THE "OMITTED UNIT ASSEMBLY A" DETAIL ON PAGE 16. IF THE LOAD ON PAGE 8 IS TO BE REDUCED, SEE THE "OMITTED CONTAINER ASSEMBLY B" DETAIL ON PAGE 16. CONTAINERS MUST BE OMITTED FROM THE TOP LAYER ONLY FOR THE LOAD ON PAGE 8.
  2. IF THE LOAD ON PAGE 6 IS TO BE REDUCED, PALLET UNITS SHOULD BE ELIMINATED AS REQUIRED AND THE TOTAL LOAD SHIFTED FORE OR AFT, AS NECESSARY, TO ACHIEVE A SYMMETRICAL WEIGHT DISTRIBUTION. THE DEPICTED PROCEDURES WILL BE FOLLOWED AS CLOSELY AS POSSIBLE, MAKING ONLY THOSE ADJUSTMENTS TO THE DUNNAGE WHICH ARE REQUIRED TO ACCOMMODATE THE NUMBER OF UNITS TO BE SHIPPED.



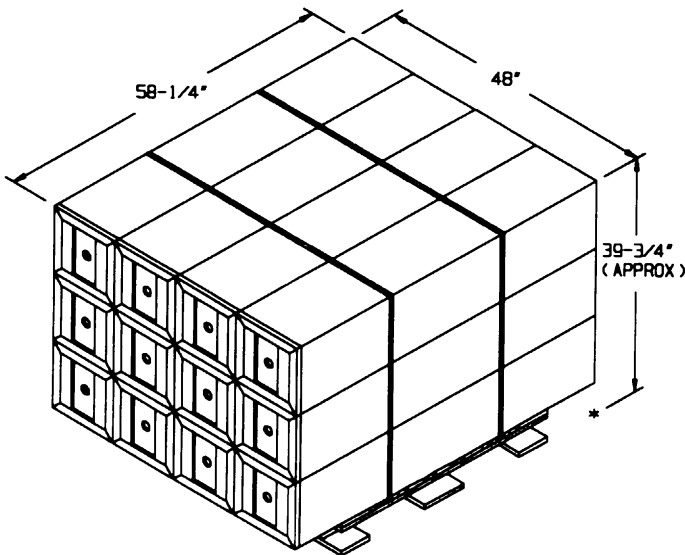
**WIREBOUND CONTAINER**

GROSS WEIGHT ----- 87 LBS (APPROX)  
 CUBE ----- 4.9 CU FT (APPROX)



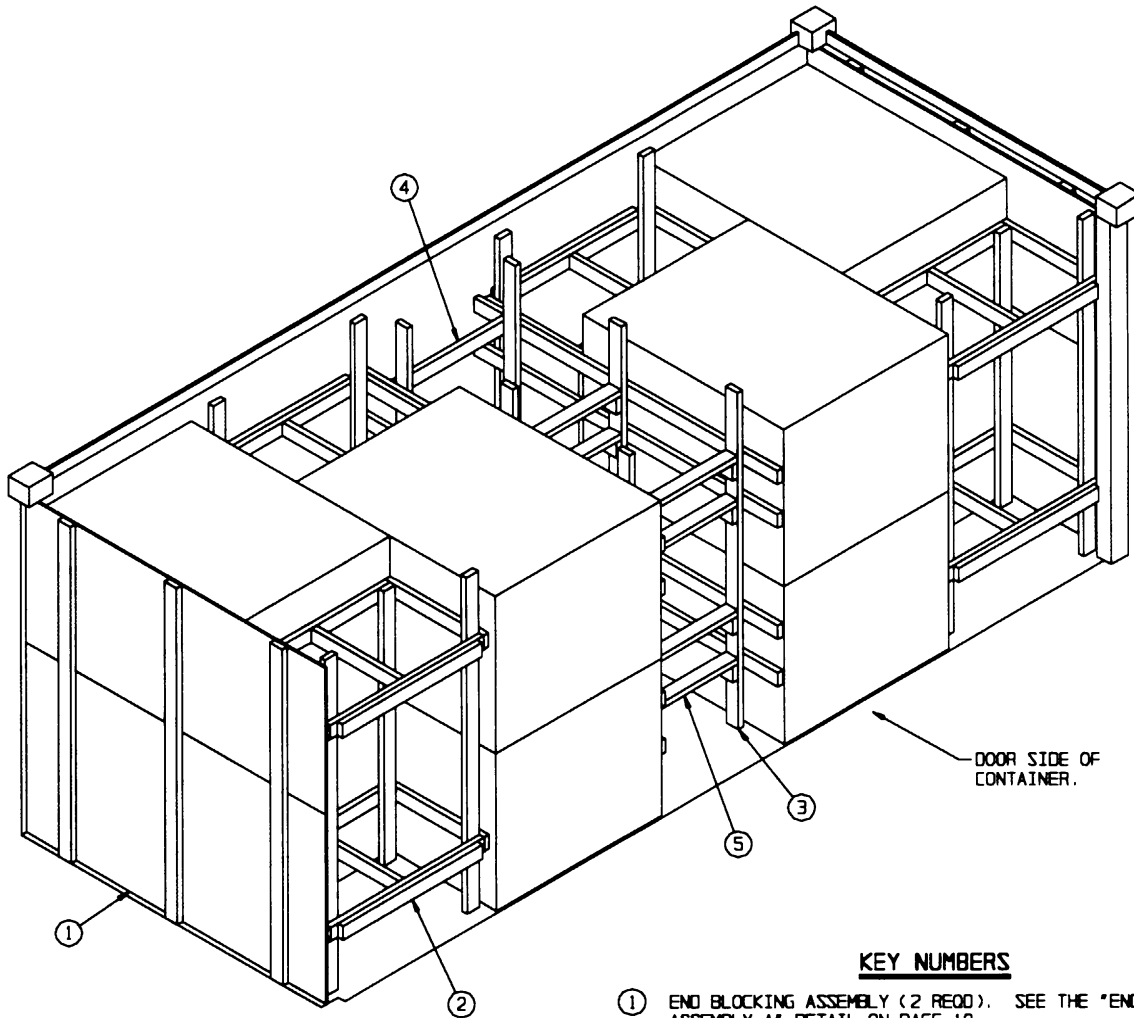
**PALLET UNIT (3-WIDE BY 4-HIGH)**

NUMBER OF CONTAINERS: -- 12  
 UNIT WEIGHT ----- 1,112 LBS (APPROX)  
 CUBE ----- 60.9 CU FT (APPROX)



**PALLET UNIT (4-WIDE BY 3-HIGH)**

NUMBER OF CONTAINERS: -- 12  
 UNIT WEIGHT ----- 1,126 LBS (APPROX)  
 CUBE ----- 64.3 CU FT (APPROX)



ISOMETRIC VIEW

KEY NUMBERS

- ① END BLOCKING ASSEMBLY (2 REQD). SEE THE "END BLOCKING ASSEMBLY A" DETAIL ON PAGE 10.
- ② CRIB FILL ASSEMBLY (4 REQD). SEE THE "CRIB FILL ASSEMBLY A" DETAIL ON PAGE 12.
- ③ CENTER GATE (2 REQD). SEE THE DETAIL ON PAGE 13.
- ④ STRUT, 2" X 4" BY CUT-TO-FIT (REF: 33") (2 REQD). POSITION AT THE SAME HEIGHTS AS THE TOP AND BOTTOM HORIZONTAL PIECES OF PIECE MARKED ③ AND NAIL TO THE VERTICALS OF PIECE MARKED ③ 1/2-10d NAILS AT EACH END.
- ⑤ STRUT, 2" X 4" BY CUT-TO-FIT (REF: 30") (8 REQD). NAIL TO PIECE MARKED ③ 1/2-10d NAILS AT EACH END.

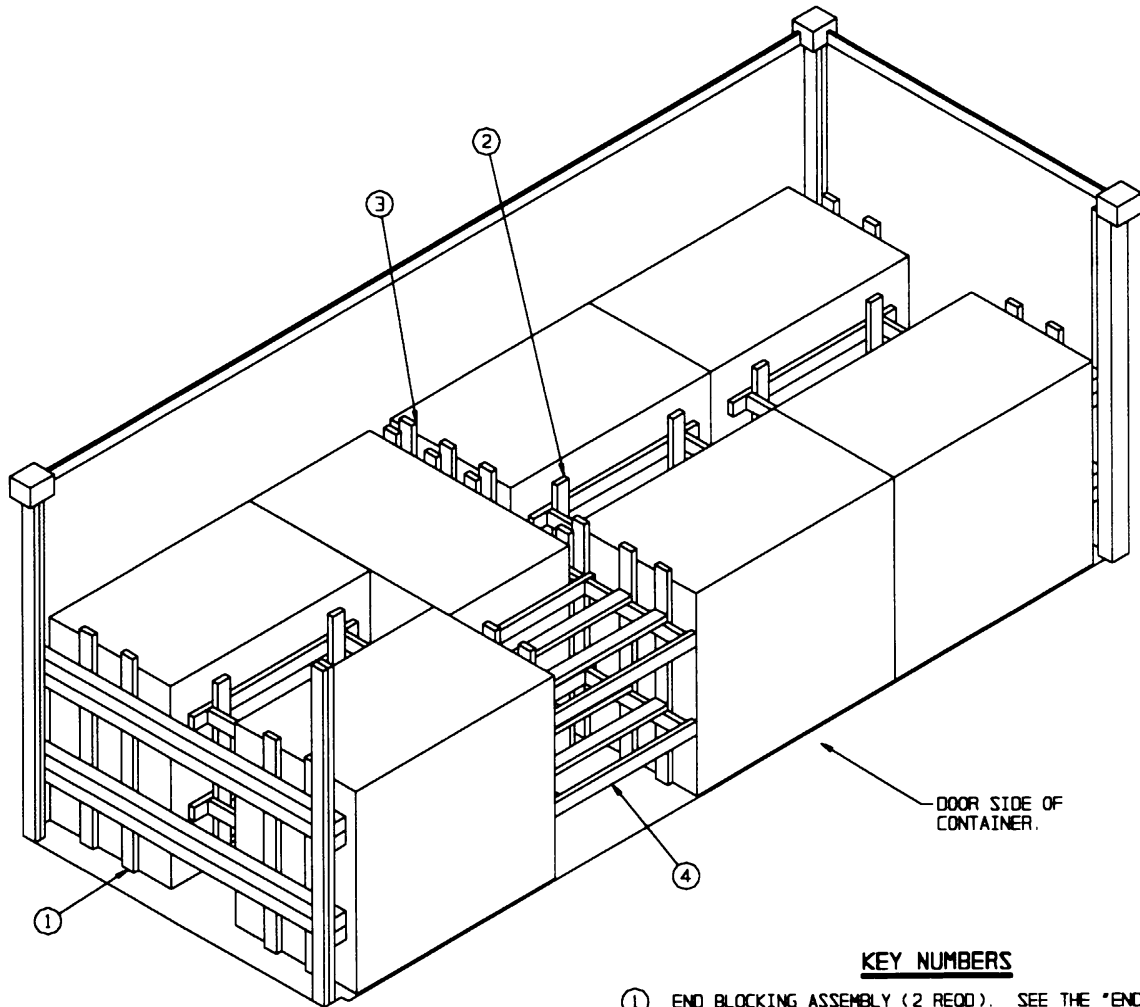
**RECOMMENDED SEQUENTIAL LOADING PROCEDURES**

1. PREFABRICATE TWO END BLOCKING ASSEMBLIES A, FOUR CRIB FILL ASSEMBLIES A AND TWO CENTER GATES.
2. INSTALL ONE END BLOCKING ASSEMBLY, LOAD TWO PALLET UNITS AND INSTALL ONE CRIB FILL ASSEMBLY.
3. REPEAT STEP 2.
4. INSTALL ONE CRIB FILL ASSEMBLY AND LOAD TWO PALLET UNITS.
5. REPEAT STEP 4.
6. INSTALL TWO CENTER GATES WITH STRUTS.

BILL OF MATERIAL		
LUMBER	LINEAR FEET	BOARD FEET
2" X 4"	420	280
NAILS	NO. REQD	POUNDS
6d (2")	60	1/2
10d (3")	316	5
PLYWOOD, 1/2" - - - 101.53 SQ FT REQD - - 139.60 LBS		

**LOAD AS SHOWN**

ITEM	QUANTITY	WEIGHT (APPROX)
PALLET UNIT	8	9,008 LBS
DUNNAGE		705 LBS
CONTAINER		6,050 LBS
TOTAL WEIGHT		15,763 LBS (APPROX)



ISOMETRIC VIEW

KEY NUMBERS

- ① END BLOCKING ASSEMBLY (2 REQD). SEE THE "END BLOCKING ASSEMBLY B" DETAIL ON PAGE 10.
- ② FILLER ASSEMBLY (3 REQD). SEE THE DETAIL ON PAGE 11.
- ③ SPACER ASSEMBLY (1 REQD). SEE THE "SPACER ASSEMBLY A" DETAIL ON PAGE 13.
- ④ CRIB FILL ASSEMBLY (1 REQD). SEE THE "CRIB FILL ASSEMBLY B" DETAIL ON PAGE 12.

**RECOMMENDED SEQUENTIAL LOADING PROCEDURES**

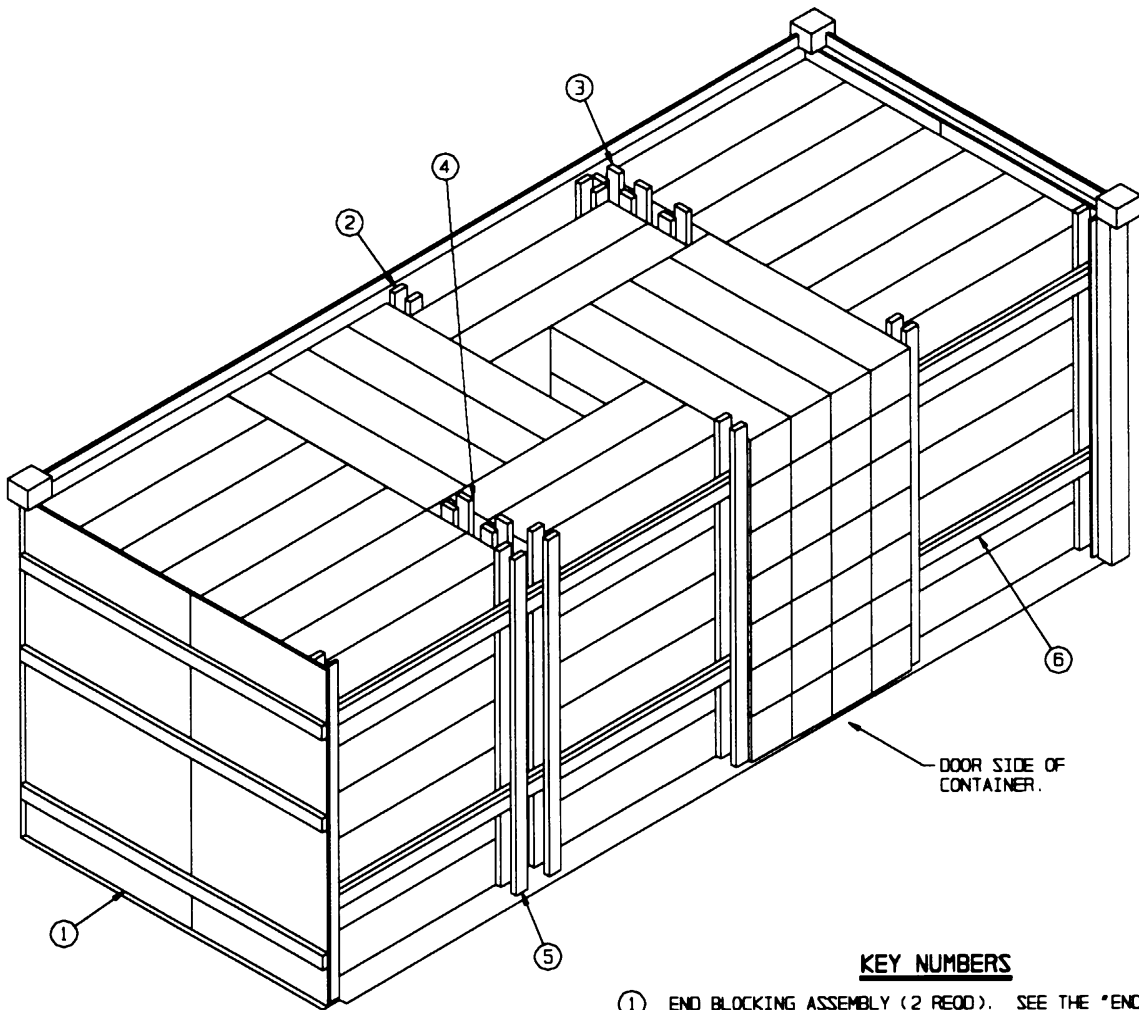
1. PREFABRICATE TWO END BLOCKING ASSEMBLIES B, THREE FILLER ASSEMBLIES, ONE SPACER ASSEMBLY A AND ONE CRIB FILL ASSEMBLY B.
2. INSTALL ONE END BLOCKING ASSEMBLY, LOAD TWO PALLET UNITS AND ONE FILLER ASSEMBLY.
3. REPEAT STEP 2.
4. LOAD TWO PALLET UNITS AND ONE FILLER ASSEMBLY.
5. LOAD ONE PALLET UNIT AND INSTALL THE SPACER ASSEMBLY AND CRIB FILL ASSEMBLY.

BILL OF MATERIAL		
LUMBER	LINEAR FEET	BOARD FEET
2" X 4"	333	222
4" X 4"	57	76
NAILS	NO. REQD	POUNDS
10d (3")	382	6

**LOAD AS SHOWN**

ITEM	QUANTITY	WEIGHT (APPROX)
PALLET UNIT	7	7,784 LBS
DUNNAGE		602 LBS
CONTAINER		6,050 LBS
TOTAL WEIGHT		14,436 LBS (APPROX)

**PALLETIZED LOAD (3-WIDE BY 4-HIGH UNIT)**



**ISOMETRIC VIEW**

**KEY NUMBERS**

- ① END BLOCKING ASSEMBLY (2 REQD). SEE THE "END BLOCKING ASSEMBLY C" DETAIL ON PAGE 11.
- ② SIDE FILL ASSEMBLY (1 REQD). SEE THE "SIDE FILL ASSEMBLY A" DETAIL ON PAGE 15.
- ③ SPACER ASSEMBLY (1 REQD). SEE THE "SPACER ASSEMBLY B" DETAIL ON PAGE 14.
- ④ SPACER ASSEMBLY (1 REQD). SEE THE "SPACER ASSEMBLY C" DETAIL ON PAGE 14.
- ⑤ SIDE FILL ASSEMBLY (1 REQD). SEE THE "SIDE FILL ASSEMBLY B" DETAIL ON PAGE 15.
- ⑥ SIDE FILL ASSEMBLY C (1 REQD). SEE THE "SIDE FILL ASSEMBLY A" AND "NOTE ▲" ON PAGE 15.



**RECOMMENDED SEQUENTIAL LOADING PROCEDURES**

1. PREFABRICATE TWO END BLOCKING ASSEMBLIES C, ONE SIDE FILL ASSEMBLY A, ONE SPACER ASSEMBLY B, ONE SPACER ASSEMBLY C, ONE SIDE FILL ASSEMBLY B AND ONE SIDE FILL ASSEMBLY C.
2. INSTALL ONE END BLOCKING ASSEMBLY AND LOAD FORTY-NINE WIREBOUND CONTAINERS.
3. REPEAT STEP 2.
4. LOAD TWENTY-EIGHT WIREBOUND CONTAINERS.
5. INSTALL SIDE FILL ASSEMBLY A, LOAD FOURTEEN WIREBOUND CONTAINERS AND INSTALL SPACER ASSEMBLY B.
6. LOAD FORTY-TWO WIREBOUND CONTAINERS AND INSTALL SPACER ASSEMBLY C.
7. INSTALL SIDE FILL ASSEMBLIES B AND C.

BILL OF MATERIAL		
LUMBER	LINEAR FEET	BOARD FEET
1" X 4"	14	5
2" X 4"	327	218
NAILS	NO. REQD	POUNDS
6d (2")	80	1/2
10d (3")	189	3
PLYWOOD, 3/4" - - - 101.53 SQ FT REQD - - - 209.40 LBS		

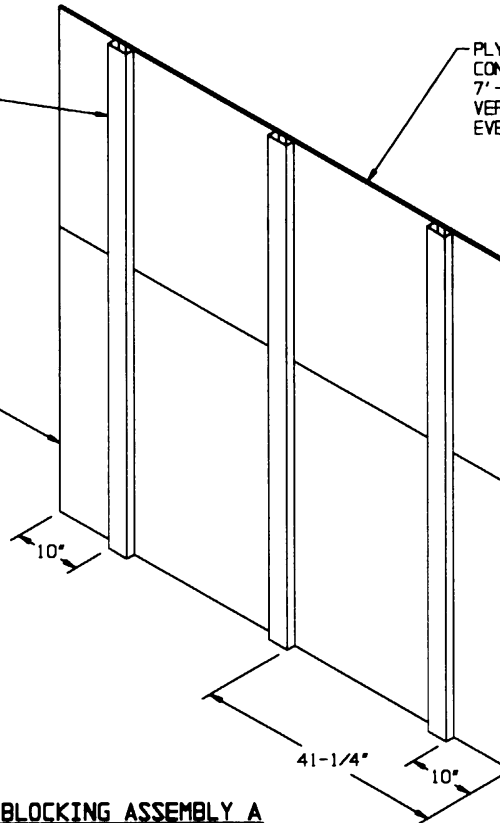
**LOAD AS SHOWN**

ITEM	QUANTITY	WEIGHT (APPROX)
WIREBOUND CONTAINER	- 182 - - - - -	15,834 LBS
DUNNAGE	- - - - -	659 LBS
CONTAINER	- - - - -	6,050 LBS
TOTAL WEIGHT - - - - -		22,543 LBS (APPROX)

VERTICAL PIECE, 2" X 4" BY  
INSIDE CONTAINER HEIGHT  
MINUS 1" (REF: 7'-1")  
(3 REQD).

PLYWOOD, 1/2" X 37" BY INSIDE  
CONTAINER WIDTH MINUS 1" (REF:  
7'-2") (1 REQD). NAIL TO THE  
VERTICAL PIECES W/1-6d NAIL  
EVERY 8". CLINCH AS REQUIRED.

PLYWOOD, 1/2" X 48" BY INSIDE  
CONTAINER WIDTH MINUS 1" (REF:  
7'-2") (1 REQD). NAIL TO THE  
VERTICAL PIECES W/1-6d NAIL  
EVERY 8". CLINCH AS REQUIRED.

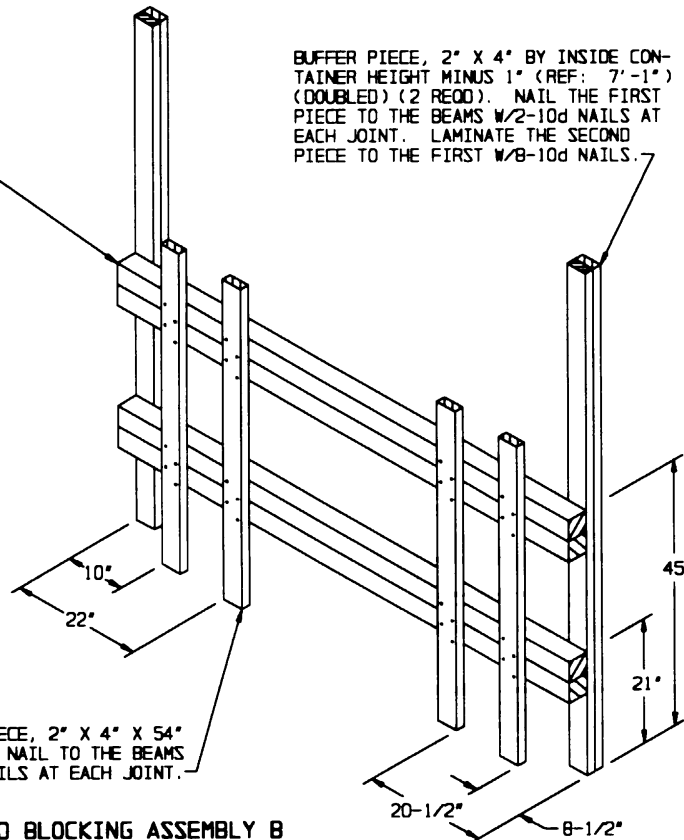


**END BLOCKING ASSEMBLY A**

BEAM, 4" X 4" BY INSIDE  
CONTAINER WIDTH MINUS 1"  
(REF: 7'-2") (4 REQD).

BUFFER PIECE, 2" X 4" BY INSIDE CON-  
TAINER HEIGHT MINUS 1" (REF: 7'-1")  
(DOUBLED) (2 REQD). NAIL THE FIRST  
PIECE TO THE BEAMS W/2-10d NAILS AT  
EACH JOINT. LAMINATE THE SECOND  
PIECE TO THE FIRST W/8-10d NAILS.

BEARING PIECE, 2" X 4" X 54"  
(4 REQD). NAIL TO THE BEAMS  
W/2-10d NAILS AT EACH JOINT.



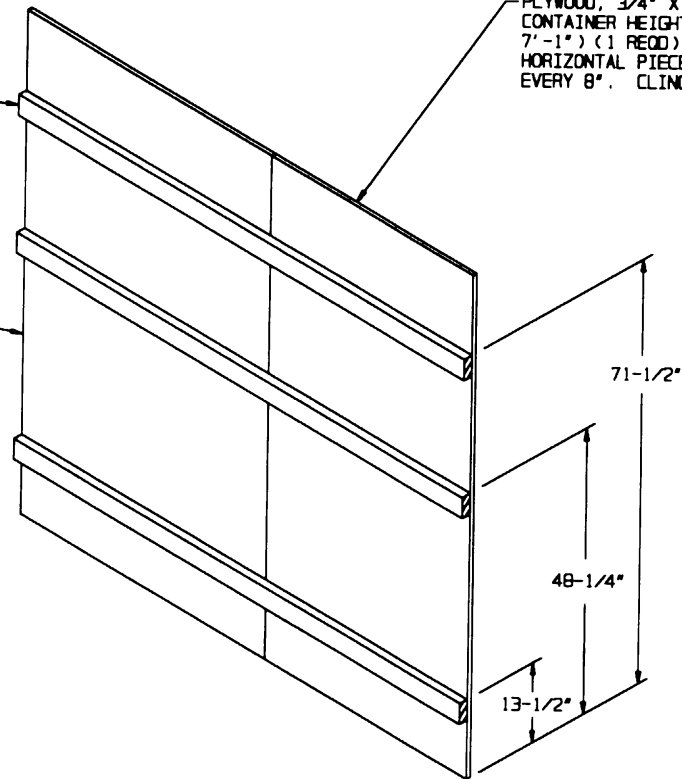
**END BLOCKING ASSEMBLY B**

A "RIGHT HAND" END BLOCKING ASSEMBLY IS DEPICTED.  
A "LEFT HAND" ASSEMBLY IS ALSO REQUIRED.

HORIZONTAL PIECE, 2" X 4" BY INSIDE CONTAINER WIDTH MINUS 1" (REF: 7'-2") (3 REQD).

PLYWOOD, 3/4" X 38" BY INSIDE CONTAINER HEIGHT MINUS 1" (REF: 7'-1") (1 REQD). NAIL TO THE HORIZONTAL PIECES W/1-6d NAIL EVERY 8". CLINCH AS REQUIRED.

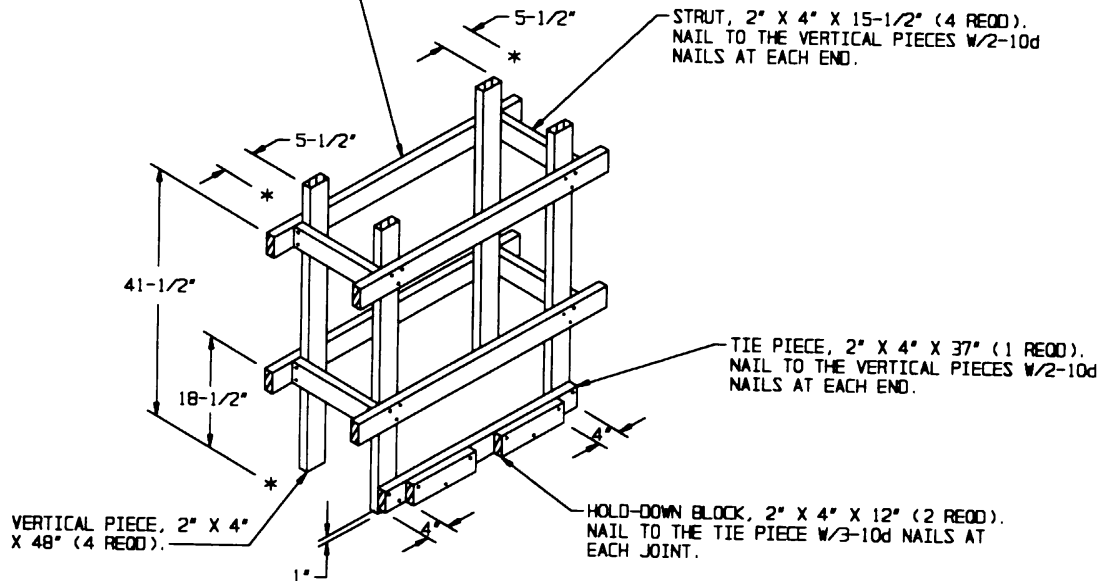
PLYWOOD, 3/4" X 48" BY INSIDE CONTAINER HEIGHT MINUS 1" (REF: 7'-1") (1 REQD). NAIL TO THE HORIZONTAL PIECES W/1-6d NAIL EVERY 8". CLINCH AS REQUIRED.



**END BLOCKING ASSEMBLY C**

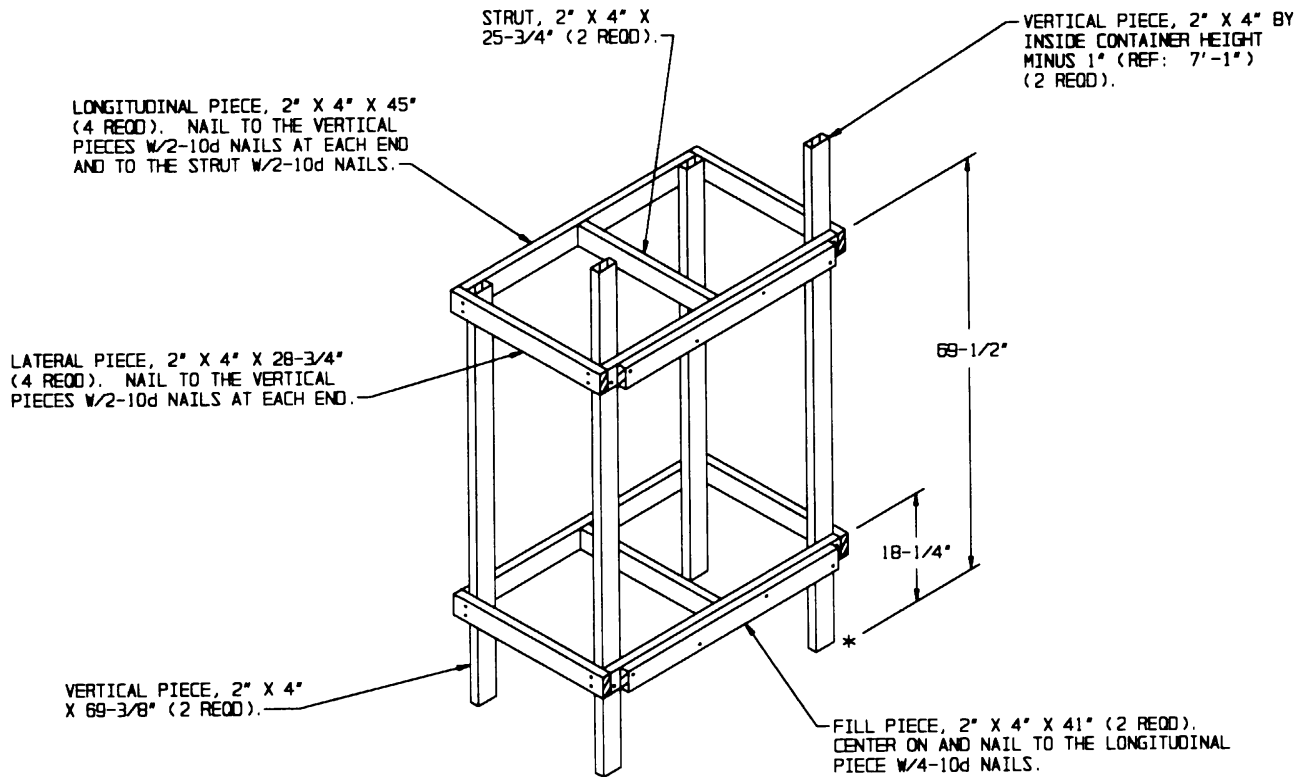
BEARING PIECE, 2" X 4" X 48" (4 REQD). NAIL TO THE VERTICAL PIECES W/3-10d NAILS AT EACH JOINT.

STRUT, 2" X 4" X 15-1/2" (4 REQD). NAIL TO THE VERTICAL PIECES W/2-10d NAILS AT EACH END.

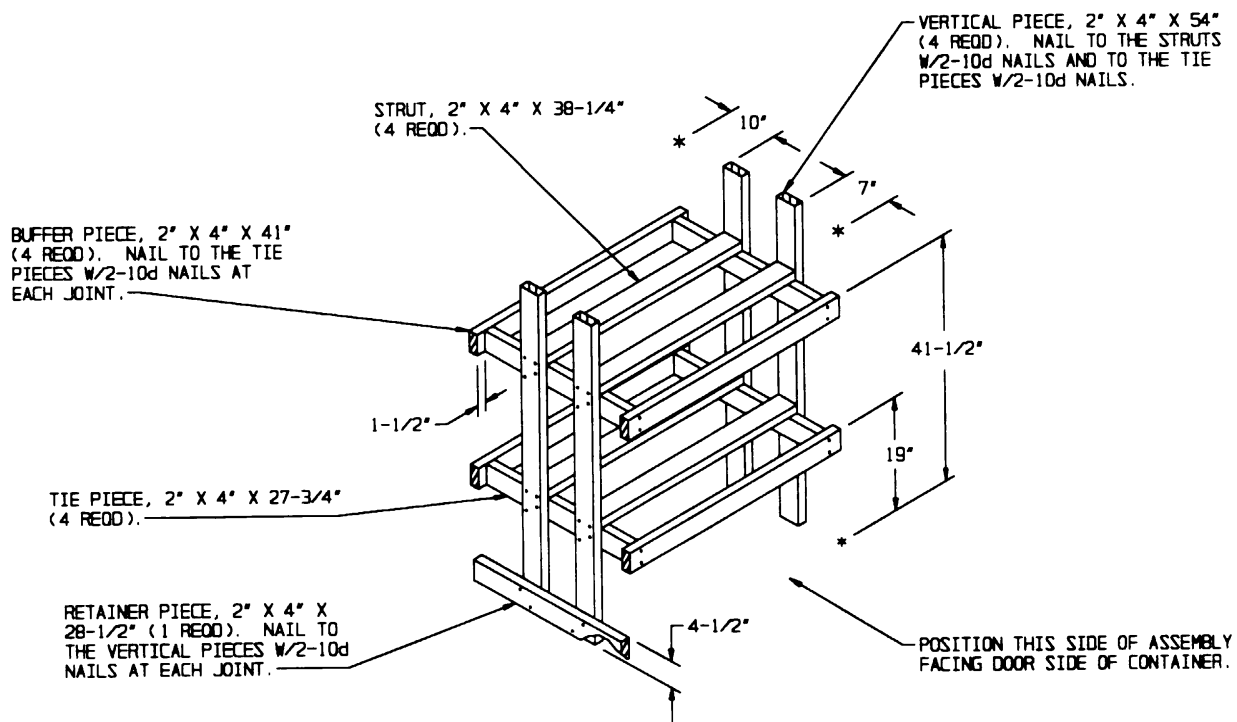


**FILLER ASSEMBLY**

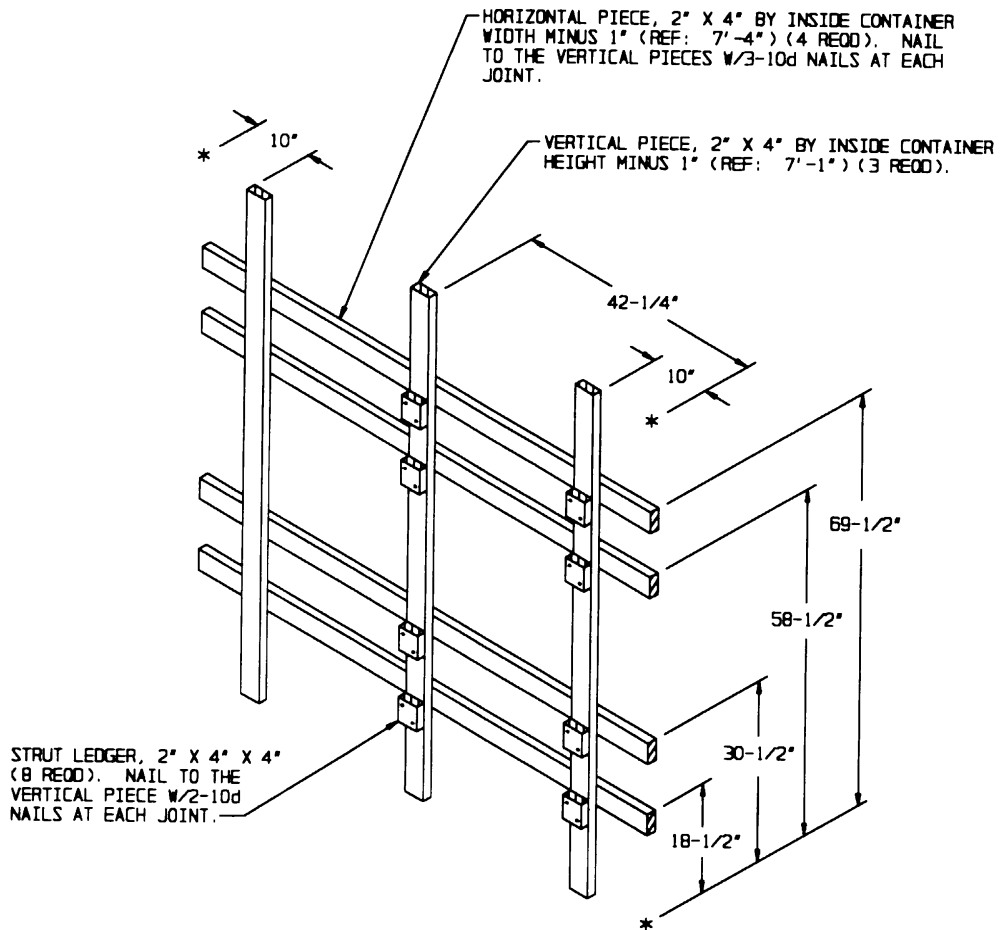
**DETAILS**



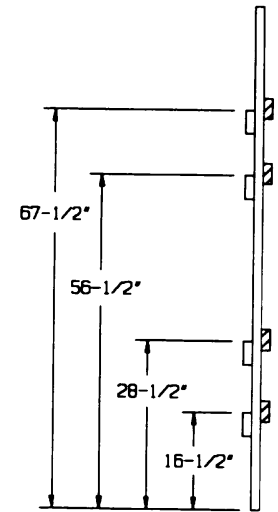
**CRIB FILL ASSEMBLY A**



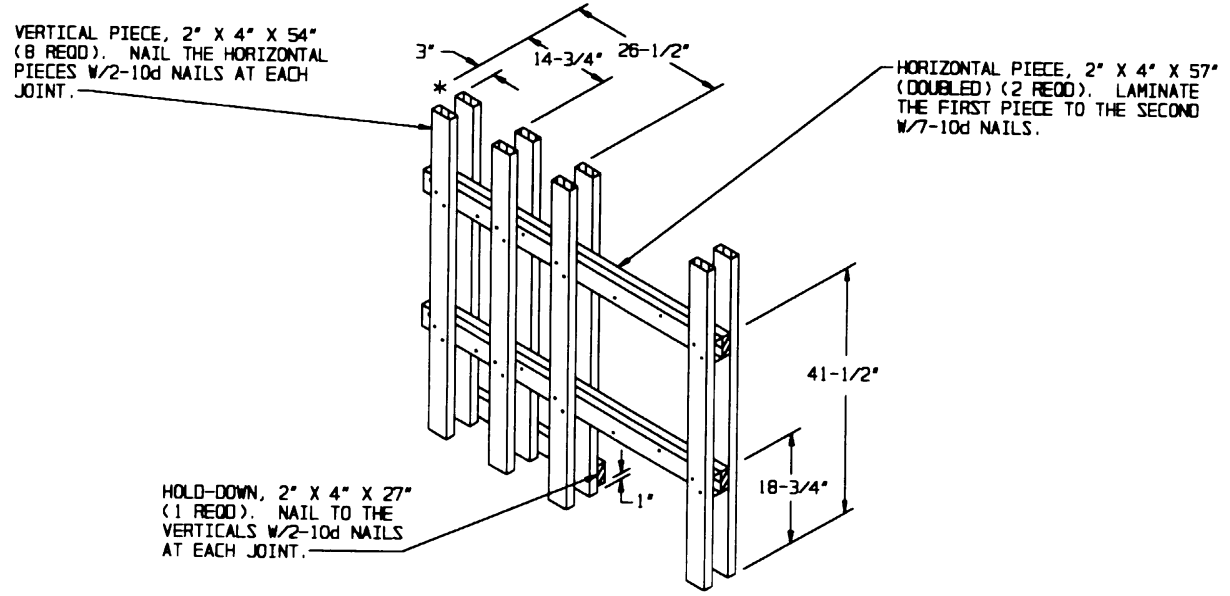
**CRIB FILL ASSEMBLY B**



**CENTER GATE**



**SIDE VIEW**

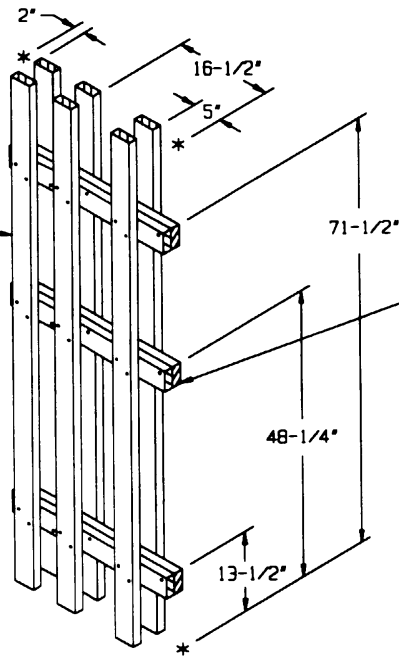


**SPACER ASSEMBLY A**

**DETAILS**

POSITION THIS END OF ASSEMBLY  
TOWARD WALL SIDE OF CONTAINER.

VERTICAL PIECE, 2" X 4" INSIDE  
CONTAINER HEIGHT MINUS 1" (REF:  
7'-1") (6 REQD). NAIL TO THE  
FILL PIECES W/2-10d NAILS AT  
EACH JOINT.

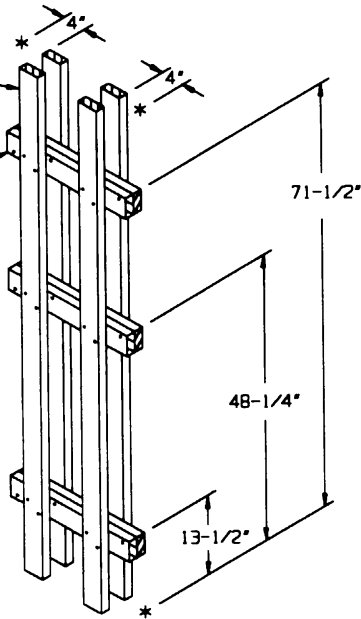


FILL PIECE, 2" X 4" X 30"  
(DOUBLED) (3 REQD). LAMI-  
NATE THE FIRST PIECE TO  
THE SECOND W/5-10d NAILS.

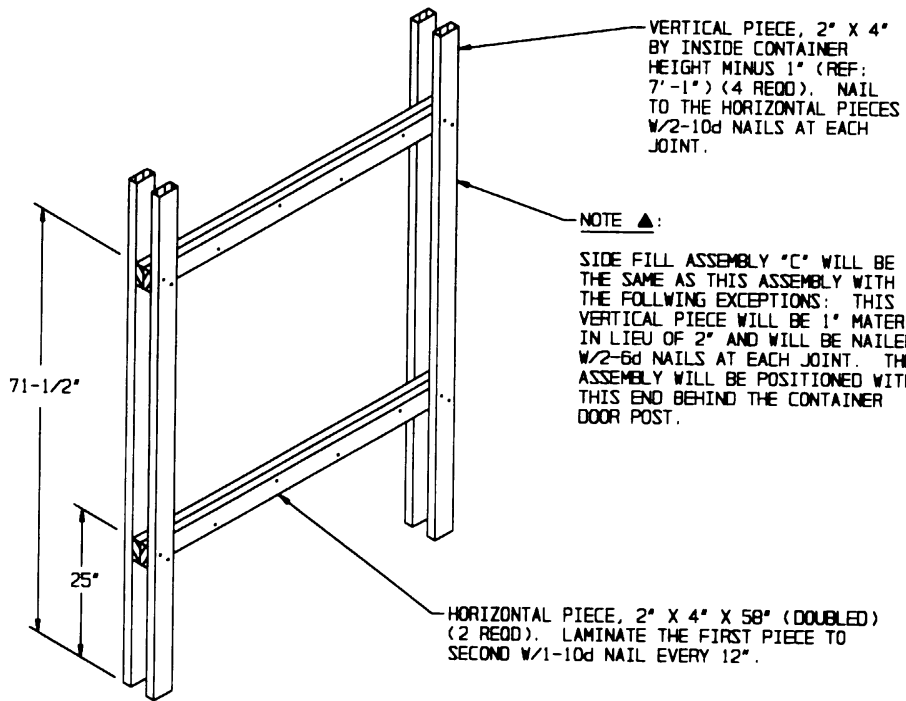
**SPACER ASSEMBLY B**

VERTICAL PIECE, 2" X 4" INSIDE  
CONTAINER HEIGHT MINUS 1" (REF:  
7'-1") (4 REQD). NAIL TO THE  
FILL PIECES W/2-10d NAILS AT  
EACH JOINT.

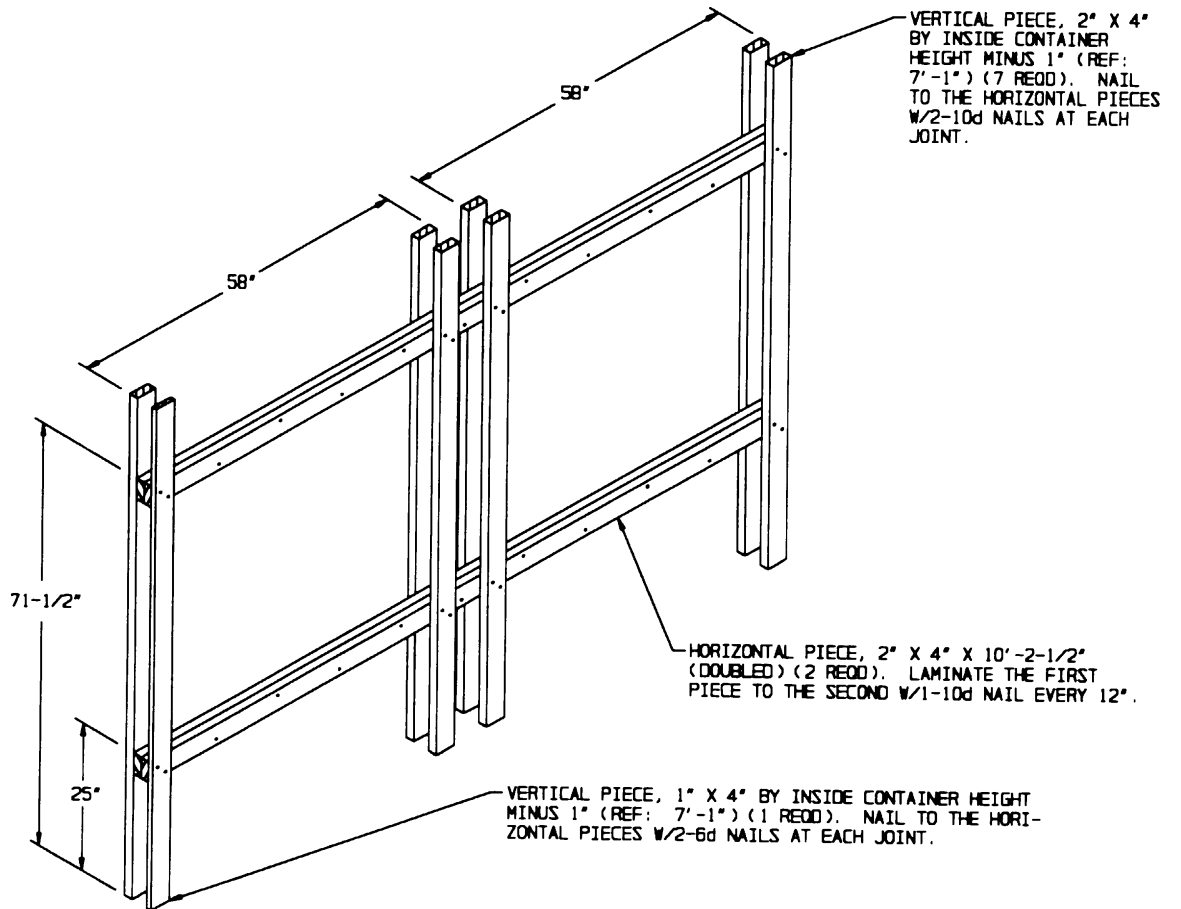
FILL PIECE, 2" X 4" X 23"  
(DOUBLED) (3 REQD). LAMI-  
NATE THE FIRST PIECE TO  
THE SECOND W/4-10d NAILS.



**SPACER ASSEMBLY C**



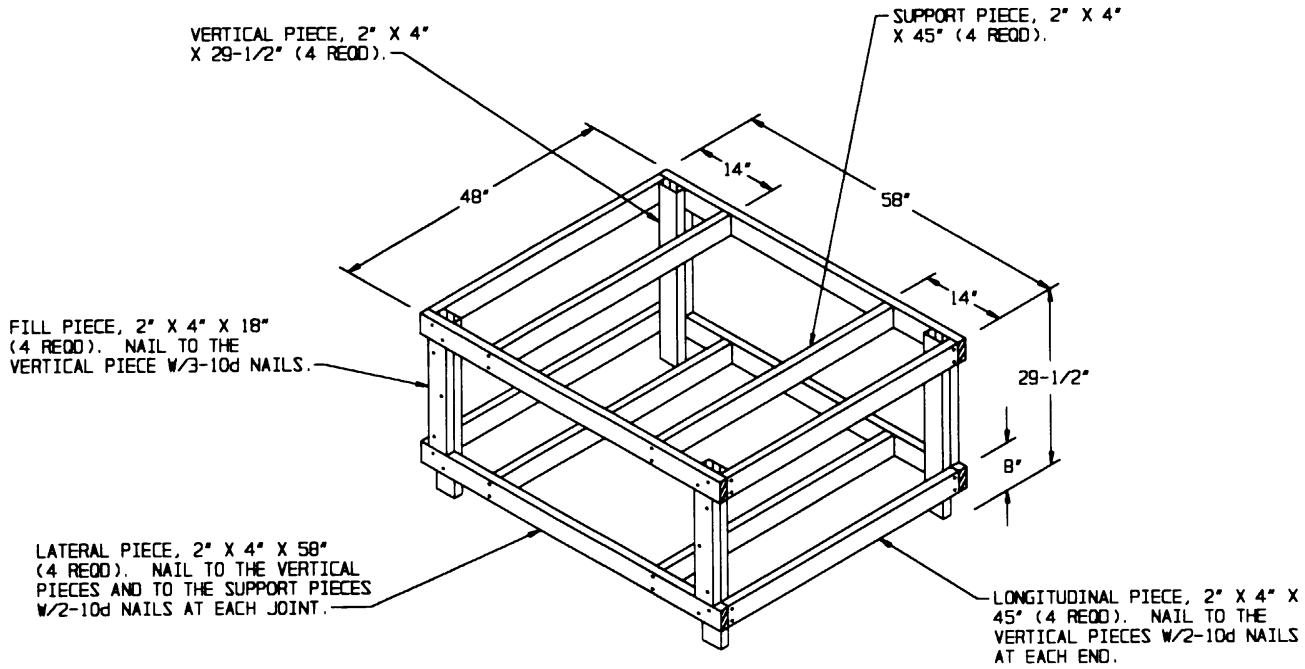
**SIDE FILL ASSEMBLY A**



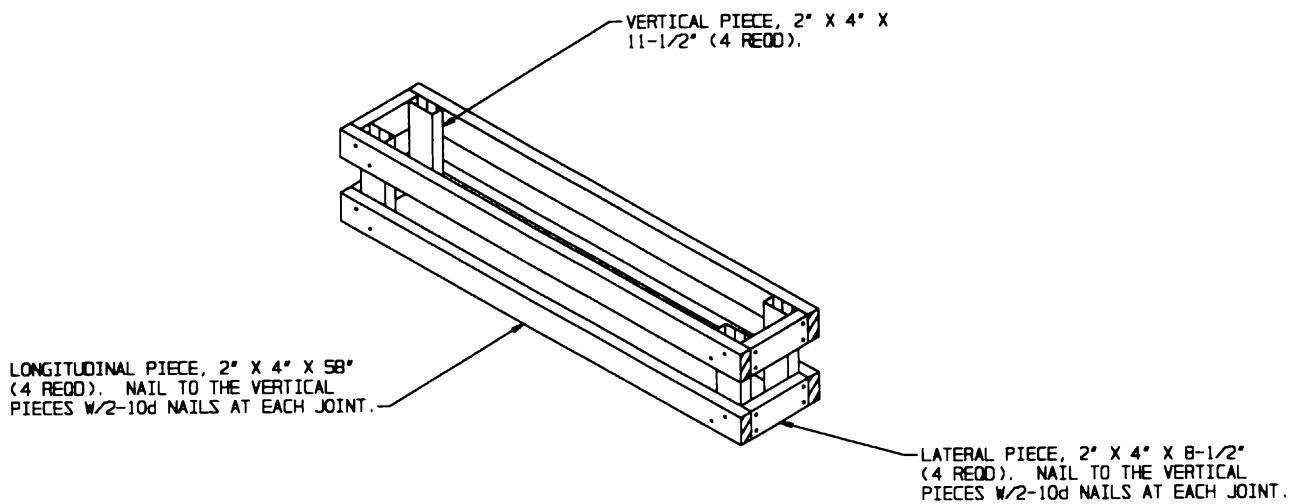
POSITION THIS END OF ASSEMBLY BEHIND CONTAINER DOOR POST

**SIDE FILL ASSEMBLY B**

**DETAILS**



**OMITTED UNIT ASSEMBLY A**



**OMITTED CONTAINER ASSEMBLY B**