

APPROVED BY
BUREAU OF EXPLOSIVES

J.A. Fleishman

DATE 5/13/94

STINGER

LOADING AND BRACING • WITH WOODEN DUNNAGE IN SIDE OPENING ISO CONTAINERS OF THE COMPLETE ROUND PACKED IN WIREBOUND AND/OR ALUMINUM CONTAINERS (UNITIZED AND SINGLE OR PALLETIZED AND AND SINGLE)

INDEX

<u>ITEM</u>	<u>PAGE(S)</u>
GENERAL NOTES AND MATERIAL SPECIFICATIONS - - - - -	2
TYPICAL CONTAINER AND UNIT DETAILS - - - - -	3, 4
UNITIZED AND SINGLE WIREBOUND CONTAINER LOAD CONFIGURATIONS - - - - -	6-9
PALLETIZED AND SINGLE ALUMINUM CONTAINER LOAD CONFIGURATIONS - - - - -	10-13
DETAILS - - - - -	14-18
TYPICAL REDUCED LOAD PROCEDURES - - - - -	19

- LOADING AND BRACING SPECIFICATIONS SET FORTH WITHIN THIS DRAWING ARE APPLICABLE TO LOADS THAT ARE TO BE SHIPPED BY TRAILER/CONTAINER-ON-FLATCAR (T/COFC) RAIL CARRIER SERVICE. THESE SPECIFICATIONS MAY ALSO BE USED FOR LOADS THAT ARE TO BE MOVED BY MOTOR OR WATER CARRIERS.

U.S. ARMY MATERIEL COMMAND DRAWING

APPROVED, U.S. ARMY MISSILE COMMAND

David R. Long
Alme

DRAFTSMAN

TECHNICIAN

ENGINEER

G. GUAY

APPROVED BY ORDER OF COMMANDING GENERAL, U.S. ARMY MATERIEL COMMAND

William L. Boyd

U.S. ARMY DEFENSE AMMUNITION CENTER AND SCHOOL

VALIDATION
ENGINEERING
DIVISION

TRANSPORTATION
ENGINEERING
DIVISION

LOGISTICS
ENGINEERING
OFFICE

JAK

W. Inerich

WJ Ernst

MARCH 1994

CLASS

DIVISION

DRAWING

FILE

19

48

8203

GM15SR3

DO NOT SCALE

GENERAL NOTES

(GENERAL NOTES CONTINUED)

- A. THIS DOCUMENT HAS BEEN PREPARED AND ISSUED IN ACCORDANCE WITH AR 740-1 AND AUGMENTS TM 743-200-1 (CHAPTER 5).
- B. THE OUTLOADING PROCEDURES SPECIFIED IN THIS DRAWING ARE APPLICABLE TO LOADS OF THE STINGER GUIDED MISSILE PACKED IN WIREBOUND CONTAINER AND/OR ALUMINUM CONTAINER. SUBSEQUENT REFERENCE TO CONTAINER MEANS WIREBOUND AND/OR ALUMINUM CONTAINER WITH CONTENTS. ALSO, SUBSEQUENT REFERENCE TO SKIDDED UNIT MEANS THE SKIDDED UNIT OF NINE (9) WIREBOUND CONTAINERS WITH CONTENTS AND SUBSEQUENT REFERENCE TO PALLETIZED UNIT MEANS THE PALLETIZED UNIT OF NINE (9) ALUMINUM CONTAINERS WITH CONTENTS. CAUTION: REGARDLESS OF THE QUANTITY OF UNITS TO BE SHIPPED, THE "MAXIMUM GROSS WEIGHT" OF THE CONTAINER MUST NOT BE EXCEEDED.
- C. FOR DETAILS OF THE WIREBOUND CONTAINER, SEE US ARMY MISSILE COMMAND DRAWING NO. 11509503 AND "WIREBOUND CONTAINER" DETAIL ON PAGE 3.

CONTAINER DIMENSIONS - - - 67-1/4" LONG X 13-1/8" WIDE X 10-1/2" HIGH (APPROX).
GROSS WEIGHT - - - - - 77 POUNDS (APPROX).
CUBE - - - - - 5.4 CUBIC FEET
- D. FOR DETAILS OF THE ALUMINUM CONTAINER, SEE US ARMY MISSILE COMMAND DRAWING NO. 11486952 AND "ALUMINUM CONTAINER" DETAIL ON PAGE 4.

CONTAINER DIMENSIONS - - - 65-9/16" LONG X 13" WIDE X 13-3/8" HIGH (APPROX).
GROSS WEIGHT - - - - - 86 POUNDS (APPROX).
CUBE - - - - - 6.6 CUBIC FEET
- E. FOR DETAILS OF THE UNITIZED WIREBOUND CONTAINERS, SEE US ARMY DARCOM DRAWING NO. 19-48-5239-GM2OSR1 AND "SKIDDED UNIT" DETAIL ON PAGE 3.

SKIDDED UNIT
DIMENSIONS - - - - - 39-3/8" LONG X 67-1/4" WIDE X 36-1/2" HIGH (APPROX).
GROSS WEIGHT - - - - - 749 POUNDS (APPROX).
CUBE - - - - - 55.9 CUBIC FEET
- F. FOR DETAILS OF THE PALLETIZED ALUMINUM CONTAINERS, SEE US ARMY DARCOM DRAWING NO. 19-48-5239-GM2OSR1 AND "PALLETIZED UNIT" DETAIL ON PAGE 4.

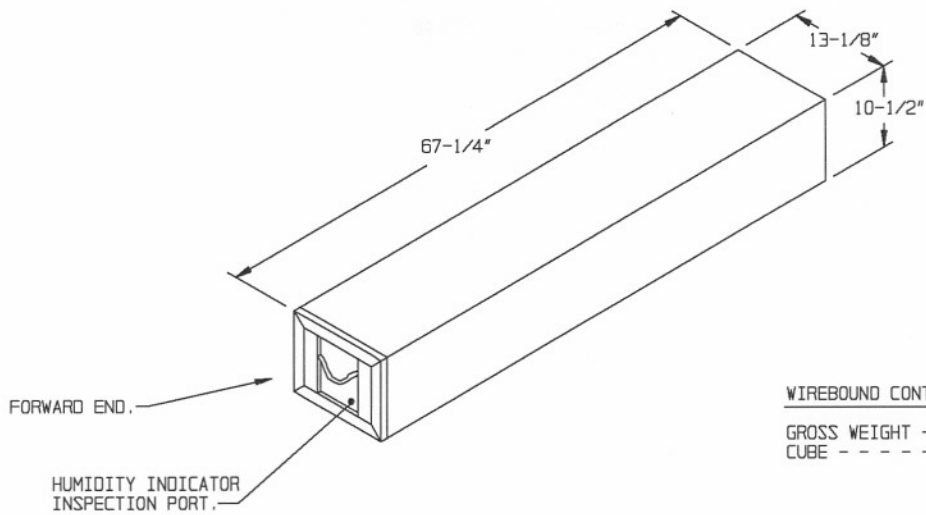
PALLETIZED UNIT
DIMENSIONS - - - - - 42" LONG X 67-1/4" WIDE X 45-5/8" HIGH (APPROX).
GROSS WEIGHT - - - - - 952 POUNDS (APPROX).
CUBE - - - - - 73.8 CUBIC FEET
- G. THE LOADS AS SHOWN ARE BASED ON 6,050 POUND 20' LONG BY 8' WIDE BY 8'-6" HIGH SIDE OPENING ISO CONTAINER WITH INSIDE DIMENSIONS OF 19'-4" LONG BY 89" WIDE BY 88" HIGH AND A MAXIMUM GROSS WEIGHT OF 52,910 POUNDS. THE LOAD IS DESIGNED FOR TRAILER/CONTAINER-ON-FLATCAR (T/COFC) SHIPMENT, HOWEVER, THE LOAD AS DESIGNED CAN ALSO BE MOVED BY MOTOR OR WATER CARRIERS. NOTICE: OTHER CONTAINERS OF THE SAME DESIGN CONFIGURATION CAN ALSO BE USED.
- H. WHEN LOADING THE UNITS, THEY ARE TO BE POSITIONED SO AS TO ACHIEVE A TIGHT LOAD (TIGHT AGAINST THE DUNNAGE ASSEMBLIES). THE UNBLOCKED SPACE ACROSS THE WIDTH OF A LOAD BAY IS NOT TO EXCEED 1-1/2". EXCESSIVE SLACK CAN BE ELIMINATED FROM A LOAD BY LAMINATING ADDITIONAL PIECES OF APPROPRIATE THICKNESS TO THE SIDE FILL ASSEMBLIES. NAIL EACH ADDITIONAL PIECE TO THE VERTICAL PIECE W/1 APPROPRIATELY SIZED NAIL EVERY 12". ADDITIONALLY, THE THICKNESS AND QUANTITY OF THE DUNNAGE LUMBER USED MAY BE ADJUSTED AS REQUIRED TO FACILITATE VARIANCE IN THE SIZE OF THE LADING UNIT.

(CONTINUED AT RIGHT)

MATERIAL SPECIFICATIONS

- LUMBER - - - - - : SEE TM 743-200-1 (DUNNAGE LUMBER) AND FED SPEC MM-L-751.
- NAILS - - - - - : FED SPEC FF-N-105; COMMON.
- PLYWOOD - - - - - : COMMERCIAL ITEM DESCRIPTION A-A-55057, TYPE A, CONSTRUCTION AND INDUSTRIAL PLYWOOD, INTERIOR WITH EXTERIOR GLUE, GRADE C-D. IF SPECIFIED GRADE IS NOT AVAILABLE, A BETTER INTERIOR OR AN EXTERIOR GRADE MAY BE SUBSTITUTED.

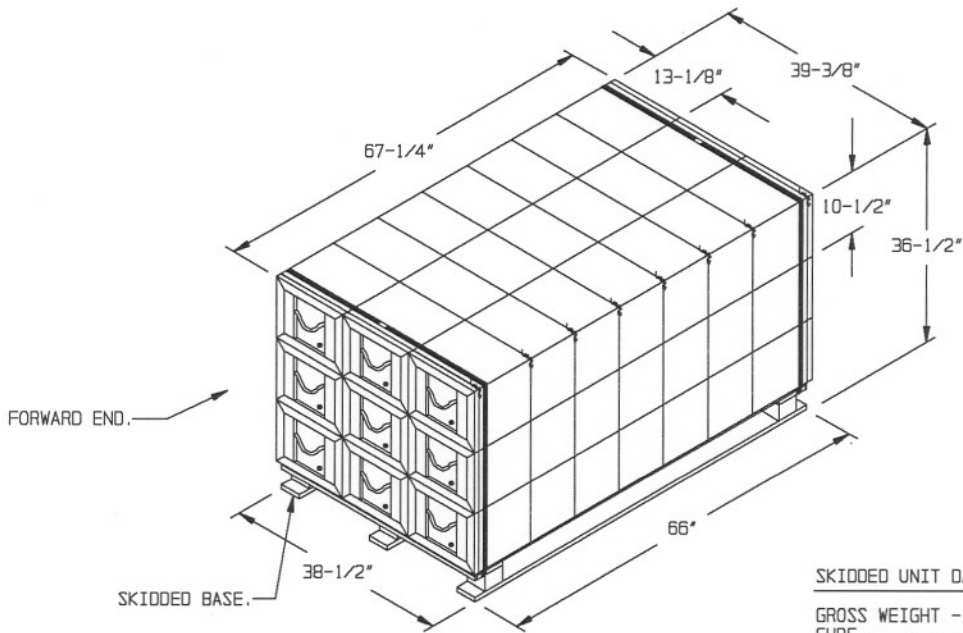
- J. DUNNAGE LUMBER SPECIFIED IS OF NOMINAL SIZE. FOR EXAMPLE, 1" X 4" MATERIAL IS ACTUALLY 3/4" THICK BY 3-1/2" WIDE AND 2" X 6" MATERIAL IS ACTUALLY 1-1/2" THICK BY 5-1/2" WIDE.
- K. A STAGGERED NAILING PATTERN WILL BE USED WHENEVER POSSIBLE WHEN NAILS ARE DRIVEN INTO JOINTS OF DUNNAGE ASSEMBLIES OR WHEN LAMINATING DUNNAGE. ADDITIONALLY, THE NAILING PATTERN FOR AN UPPER PIECE OF LAMINATED DUNNAGE WILL BE ADJUSTED AS REQUIRED SO THAT A NAIL FOR THAT PIECE WILL NOT BE DRIVEN THROUGH ONTO OR RIGHT BESIDE A NAIL IN A LOWER PIECE.
- L. IN SOME CONTAINERS THERE IS A SLOT AT THE CORNERS OF THE ENDWALLS. A PIECE OF DUNNAGE MATERIAL MUST BE LAMINATED TO THE BUFFER PIECES OF THE END BLOCKING ASSEMBLY TO PROVIDE A FLAT SURFACE FOR THE 1" X 4" OR 2" X 4" BUFFER PIECES. A PIECE OF 2" X 4", 2" X 3", OR A SPECIAL WIDTH PIECE CUT-TO-FIT CAN BE USED. THIS FILL PIECE WILL BE NAILED WITH ONE APPROPRIATELY SIZED NAIL EVERY 12". THIS PIECE IS NOT REQUIRED WHEN THE ENDWALL OF THE CONTAINER IS SMOOTH AND FLAT.
- M. CAUTION: DO NOT NAIL DUNNAGE MATERIAL TO THE CONTAINER WALLS OR FLOOR. ALL NAILING WILL BE WITHIN THE DUNNAGE.
- N. PORTIONS OF THE CONTAINER DEPICTED WITHIN THIS DRAWING, SUCH AS THE SIDE DOORS, HAVE NOT BEEN SHOWN IN THE LOAD VIEW FOR CLARITY PURPOSES.
- O. CONVERSION TO METRIC EQUIVALENTS: DIMENSIONS WITHIN THIS DOCUMENT ARE EXPRESSED IN INCHES AND WEIGHTS ARE EXPRESSED IN POUNDS. WHEN NECESSARY, THE METRIC EQUIVALENTS MAY BE COMPUTED ON THE BASIS OF ONE INCH EQUALS 25.4MM AND ONE POUND EQUALS 0.454 KG.
- P. REQUIREMENTS CITED WITHIN THE BUREAU OF EXPLOSIVES PAMPHLET 6C APPLY WHEN THE SHIPMENT MOVES BY TRAILER/CONTAINER-ON-FLATCAR (T/COFC). SPECIAL T/COFC NOTES FOLLOW:
 - 1. A LOADED CONTAINER MUST BE ON A CHASSIS EQUIPPED WITH TWO BOGIE ASSEMBLIES WHEN BEING MOVED IN TOFC SERVICE.
 - 2. THE LOAD LIMIT OF A T/COFC RAILCAR MUST NOT BE EXCEEDED, NOR WILL A CAR BE LOADED SO THAT THE TRUCK UNDER ONE END OF THE CAR CARRIES MORE THAN ONE-HALF OF THE LOAD LIMIT FOR THAT CAR.
- Q. DURING INTRASTATE AND/OR INTERSTATE MOVES BY MOTOR CARRIER, A PROPER CHASSIS OR MODIFIED FLATBED TRAILER MUST BE USED TO PRECLUDE VIOLATION OF ONE OR MORE "WEIGHT LAWS" APPLICABLE TO THE STATE OR STATES INVOLVED.
- R. THE QUANTITY OF LADING UNITS SHOWN IN THE LOADS MAY BE REDUCED FOR SHIPMENT, IF DESIRED. WHEN A CONTAINER IS TO BE LOADED WITH A REDUCED QUANTITY OF LADING UNITS, THE LENGTHWISE CENTER OF GRAVITY OF THE LOAD MUST BE WITHIN 12", IN EITHER DIRECTION, OF THE MID-POINT OF THE CONTAINER.
 - 1. IF THE LOAD ON PAGE 4 IS TO BE REDUCED, SEE THE "OMITTED UNIT ASSEMBLY A" DETAIL ON PAGE 5. LADING UNITS NORMALLY MAY BE ELIMINATED FROM THE CENTER OF THE LOAD. IF THE LOADS ON PAGES 8 AND 12 ARE TO BE REDUCED, SEE THE "OMITTED CONTAINER ASSEMBLY A" DETAIL ON PAGE 5. CONTAINERS MUST BE OMITTED FROM THE TOP LAYERS ONLY FOR THE LOADS ON PAGES 4, 8 AND 12.
 - 2. IF THE LOAD ON PAGE 10 IS TO BE REDUCED, SEE THE "TYPICAL REDUCED LOAD PROCEDURES" ON PAGE 19.
 - 3. THE DEPICTED PROCEDURES WILL BE FOLLOWED AS CLOSELY AS POSSIBLE, MAKING ONLY THOSE ADJUSTMENTS TO THE DUNNAGE WHICH ARE REQUIRED TO ACCOMMODATE THE NUMBER OF UNITS TO BE SHIPPED.



WIREBOUND CONTAINER DATA:

GROSS WEIGHT - - - - - 77 LBS (APPROX)
 CUBE - - - - - 5.4 CU FT (APPROX)

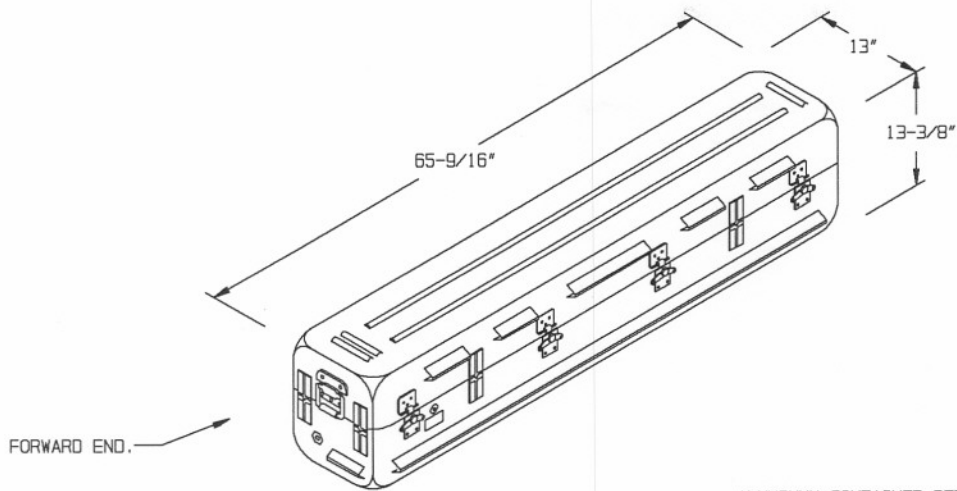
WIREBOUND CONTAINER



SKIDDED UNIT DATA:

GROSS WEIGHT - - - 749 LBS (APPROX)
 CUBE - - - - - 55.9 CU FT (APPROX)

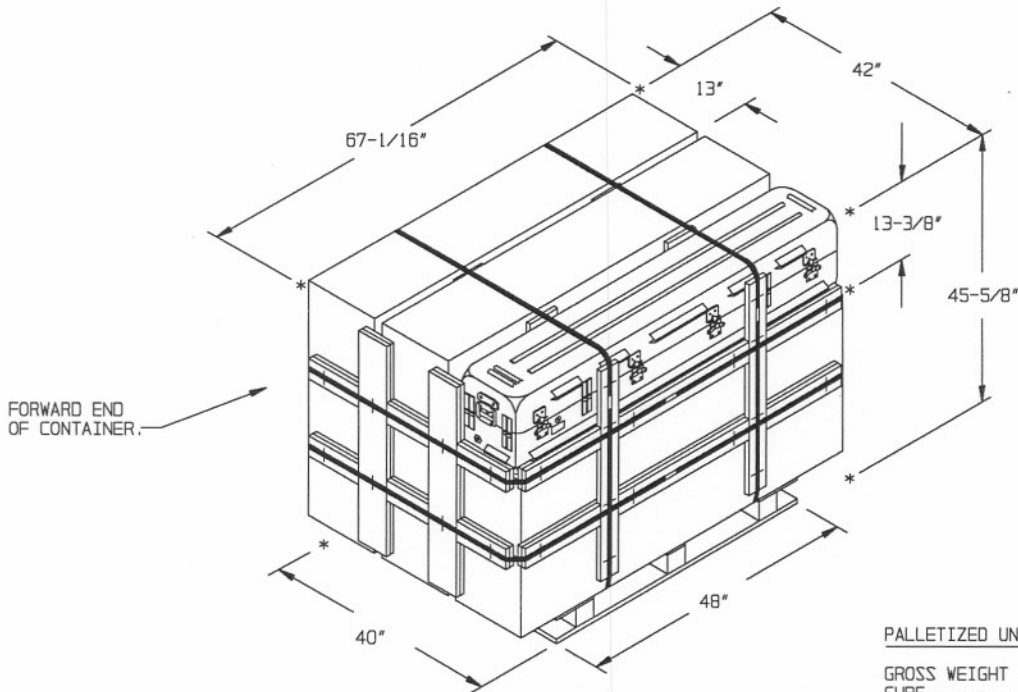
SKIDDED UNIT OF NINE (9) GUIDED MISSILES,
 PACKED ONE (1) PER WIREBOUND (WOODEN) BOX



ALUMINUM CONTAINER DETAIL

GROSS WEIGHT - - - 86 LBS (APPROX)
 CUBE - - - - - 6.6 CU FT (APPROX)

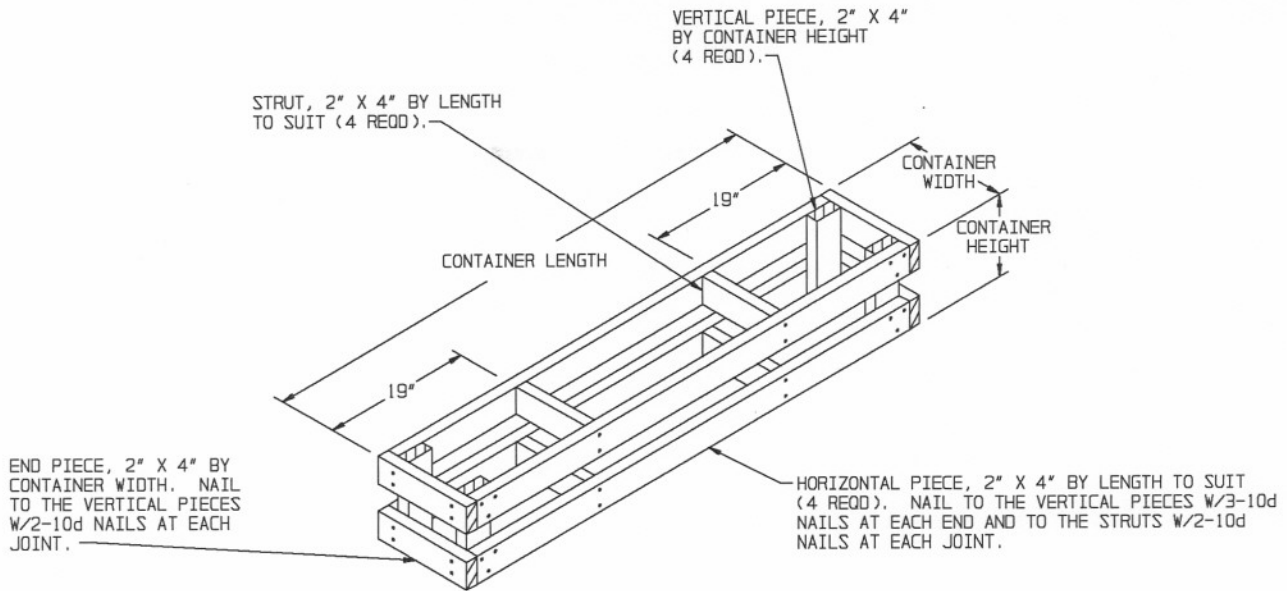
ALUMINUM CONTAINER



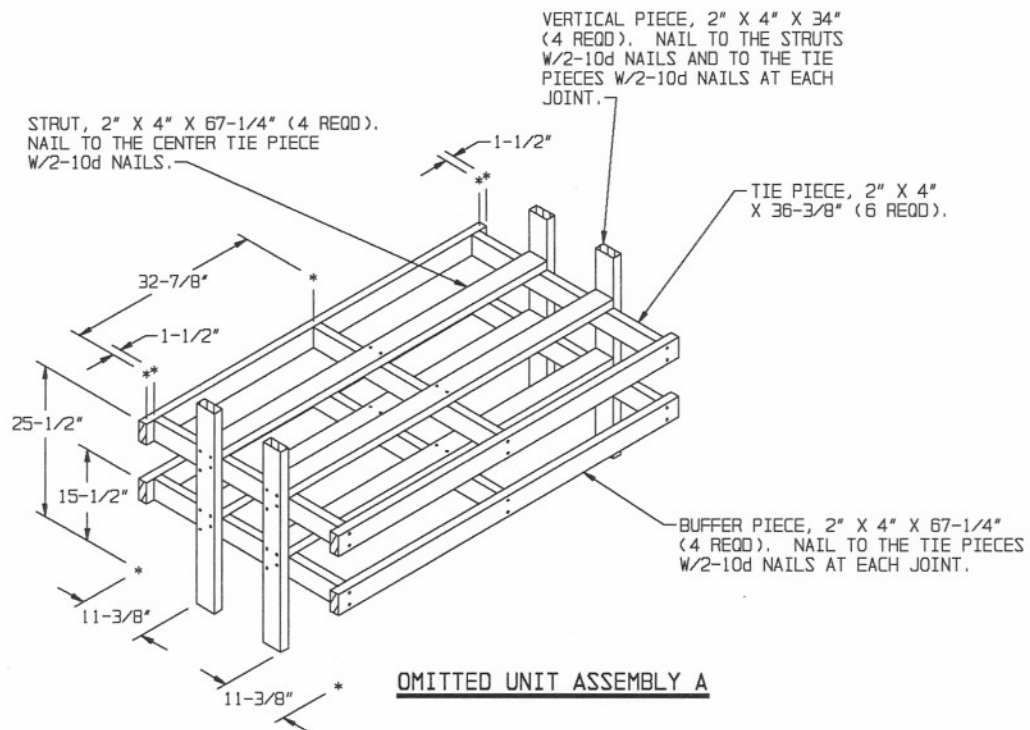
PALLETIZED UNIT DATA:

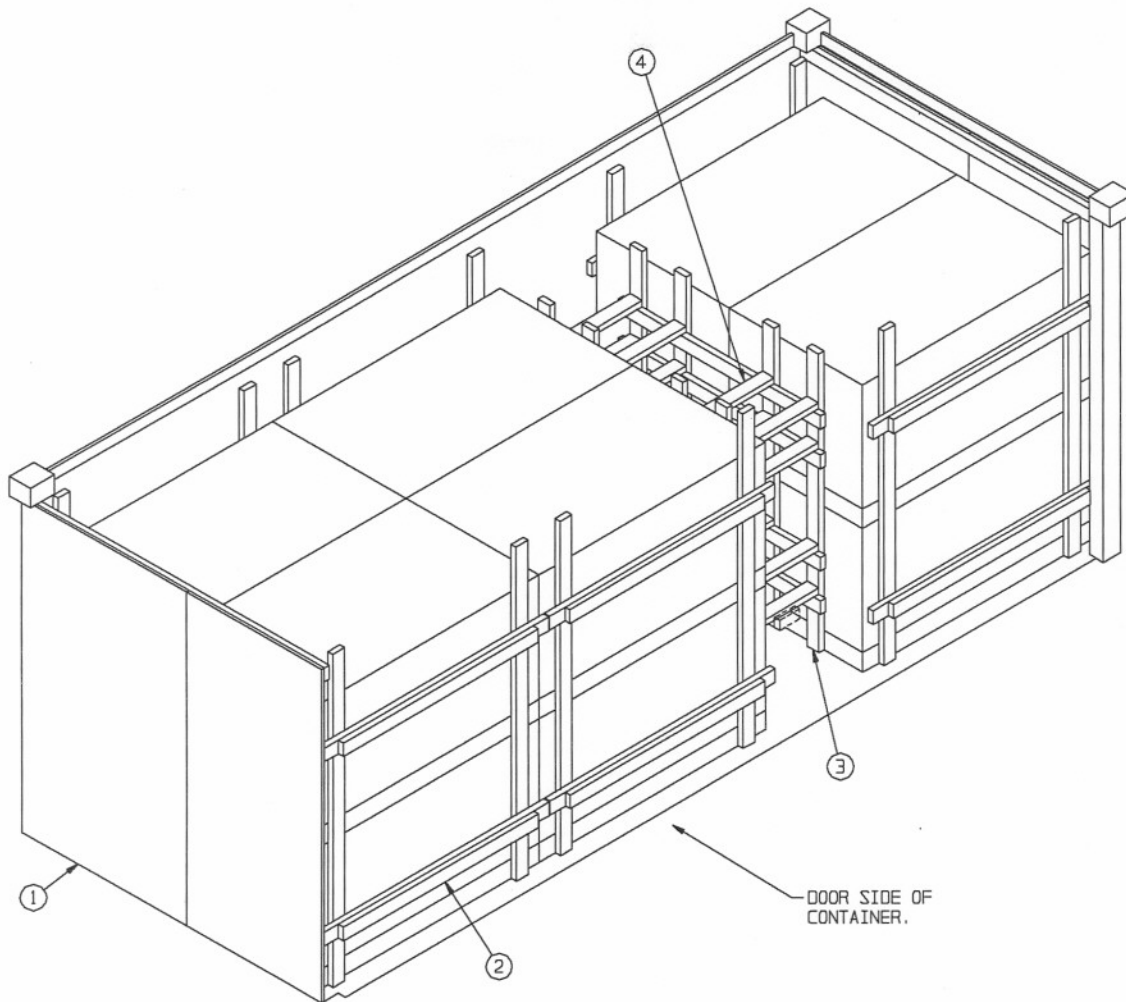
GROSS WEIGHT - - - 952 LBS (APPROX)
 CUBE - - - - - 73.8 CU FT (APPROX)

PALLETIZED UNIT OF NINE (9) GUIDED MISSILES
PACKED ONE (1) PER ALUMINUM CONTAINER



OMITTED CONTAINER ASSEMBLY A





ISOMETRIC VIEW

KEY NUMBERS

- ① END BLOCKING ASSEMBLY (2 REQD). SEE THE "END BLOCKING ASSEMBLY A" DETAIL ON PAGE 14.
- ② SIDE FILL ASSEMBLY (6 REQD). SEE THE "SIDE FILL A" DETAIL ON PAGE 17.
- ③ CENTER GATE (2 REQD). SEE THE "CENTER GATE A" DETAIL ON PAGE 18.
- ④ STRUT, 2" X 4" BY LENGTH TO SUIT (REF: 25-3/4") (16 REQD). NAIL TO PIECE MARKED ③ W/2-10d NAILS AT EACH JOINT.

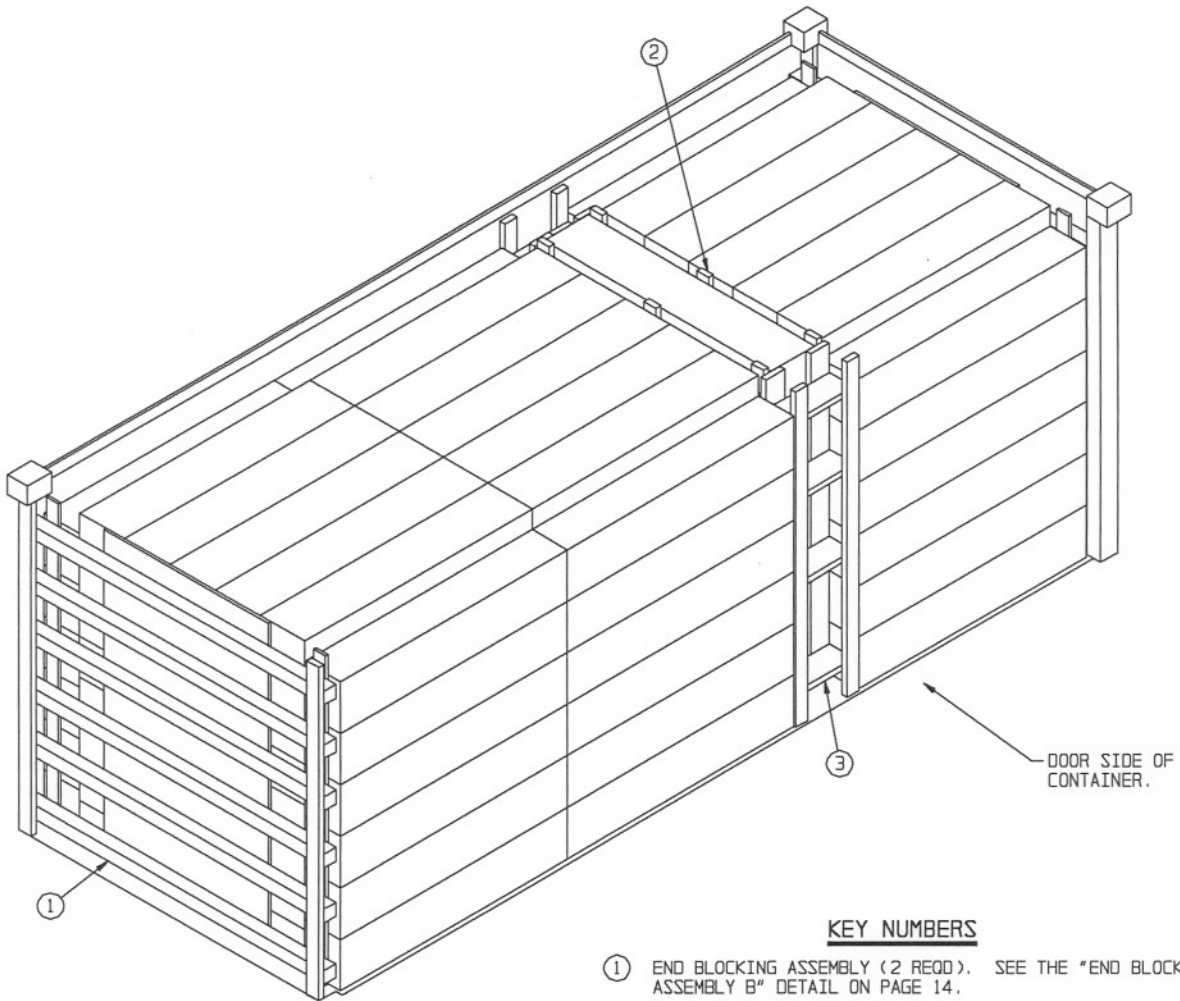
RECOMMENDED SEQUENTIAL LOADING PROCEDURES

1. PREFABRICATE TWO END BLOCKING ASSEMBLIES A, SIX SIDE FILL A ASSEMBLIES AND TWO CENTER GATE A ASSEMBLIES.
2. INSTALL ONE END BLOCKING ASSEMBLY, TWO SIDE FILL ASSEMBLIES AND LOAD EIGHT SKIDDED UNITS.
3. INSTALL ONE END BLOCKING ASSEMBLY, ONE SIDE FILL ASSEMBLY AND LOAD FOUR SKIDDED UNITS.
4. INSTALL THE TWO CENTER GATES, SIXTEEN STRUTS AND THREE SIDE FILL ASSEMBLIES.

BILL OF MATERIAL		
LUMBER	LINEAR FEET	BOARD FEET
2" X 4"	352	235
NAILS	NO. REQD	POUNDS
6d (2")	22	1/4
10d (3")	244	3-3/4
PLYWOOD, 3/4" - - - - 101.53 SQ FT REQD - - 209.41 LBS		

LOAD AS SHOWN

<u>ITEM</u>	<u>QUANTITY</u>	<u>WEIGHT (APPROX)</u>
SKIDDED UNIT - - - - -	12 - - - - -	8,988 LBS
DUNNAGE - - - - -	- - - - -	684 LBS
CONTAINER - - - - -	- - - - -	6,050 LBS
TOTAL WEIGHT - - - - -		15,722 LBS (APPROX)



ISOMETRIC VIEW

KEY NUMBERS

- ① END BLOCKING ASSEMBLY (2 REQD). SEE THE "END BLOCKING ASSEMBLY B" DETAIL ON PAGE 14.
- ② CENTER FILL ASSEMBLY (2 REQD). SEE THE "CENTER FILL A" DETAIL ON PAGE 16.
- ③ SIDE FILL ASSEMBLY (2 REQD). SEE THE "SIDE FILL B" DETAIL ON PAGE 17.

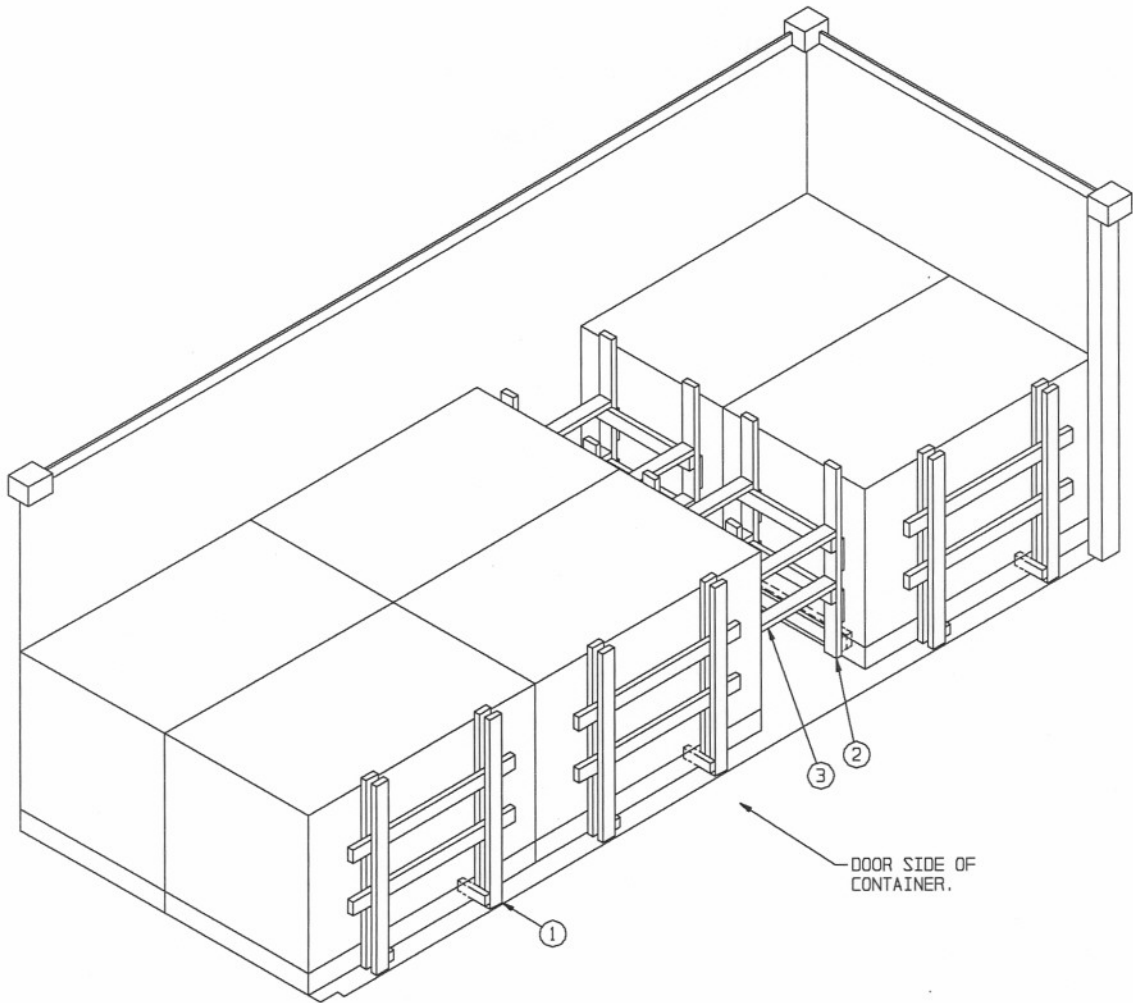
RECOMMENDED SEQUENTIAL LOADING PROCEDURES

1. PREFABRICATE TWO END BLOCKING ASSEMBLIES B, TWO CENTER FILL A ASSEMBLIES AND TWO SIDE FILL B ASSEMBLIES.
2. INSTALL ONE END BLOCKING ASSEMBLY AND LOAD ONE HUNDRED AND FOUR CONTAINERS.
3. INSTALL ONE END BLOCKING ASSEMBLY AND LOAD FIFTY-TWO CONTAINERS.
4. INSTALL ONE SIDE FILL ASSEMBLY, LOAD EIGHT CONTAINERS, INSTALL TWO CENTER FILL ASSEMBLIES AND ONE SIDE FILL ASSEMBLY.

BILL OF MATERIAL		
LUMBER	LINEAR FEET	BOARD FEET
1" X 4"	28	9
2" X 4"	98	65
2" X 6"	28	28
2" X 8"	12	16
4" X 4"	86	115
NAILS	NO. REQD	POUNDS
6d (2")	192	1-1/4
10d (3")	112	1-3/4
PLYWOOD, 1/2"	--- 44.67 SQ FT REQD	-- 61.42 LBS
PLYWOOD, 3/4"	--- 56.00 SQ FT REQD	-- 115.50 LBS

LOAD AS SHOWN

ITEM	QUANTITY	WEIGHT (APPROX)
CONTAINER	----- 164 -----	12,628 LBS
DUNNAGE	-----	646 LBS
CONTAINER	-----	6,050 LBS
TOTAL WEIGHT		----- 19,324 LBS (APPROX)



ISOMETRIC VIEW

KEY NUMBERS

- ① SIDE FILL ASSEMBLY (3 REOD). SEE THE "SIDE FILL C" DETAIL ON PAGE 18.
- ② CENTER GATE (4 REOD). SEE THE "CENTER GATE B" DETAIL ON PAGE 18.
- ③ STRUT, 2" X 4" BY LENGTH TO SUIT (REF: 27-1/2") (8 REOD). NAIL TO PIECE MARKED ② W/2-10d NAILS AT EACH END.

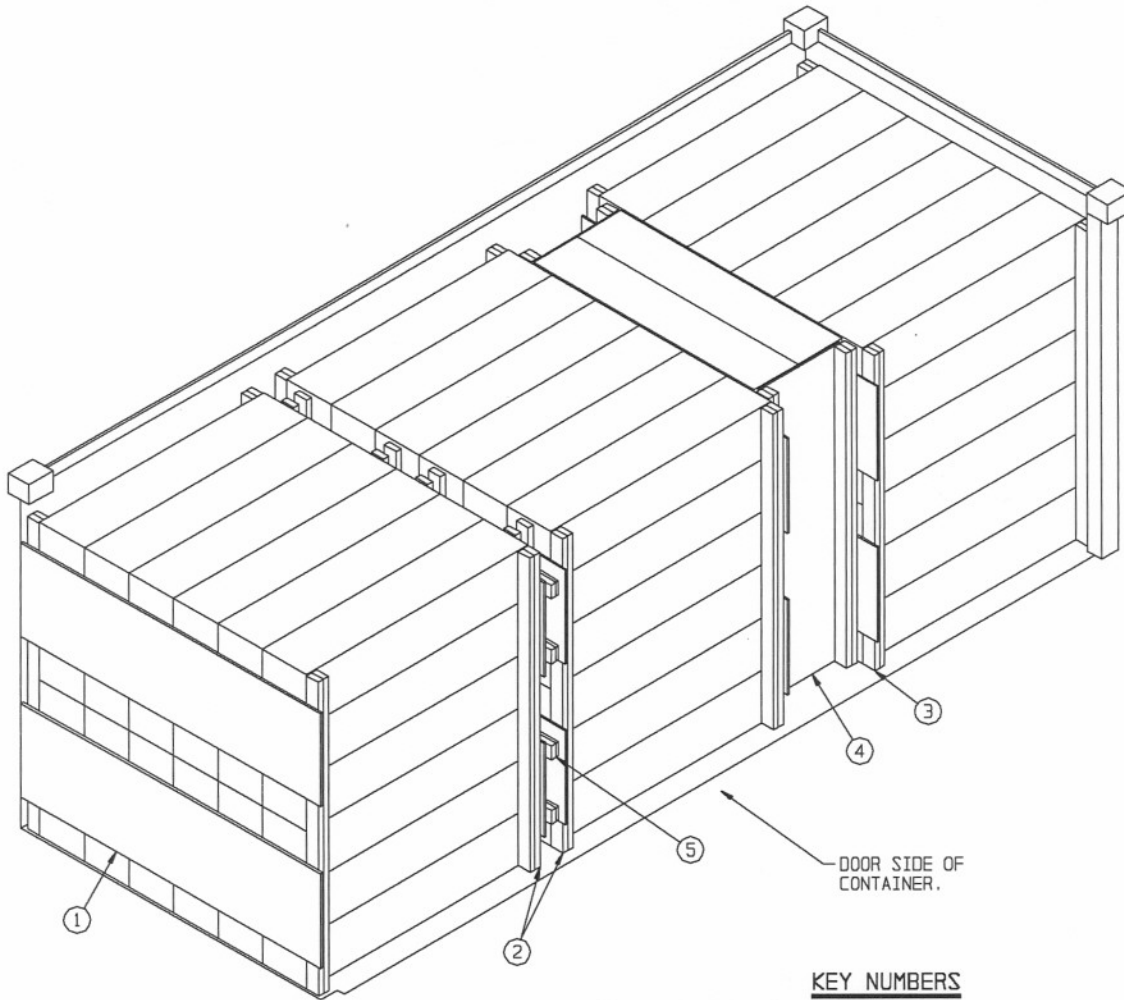
RECOMMENDED SEQUENTIAL LOADING PROCEDURES

1. PREFABRICATE THREE SIDE FILL C ASSEMBLIES AND FOUR CENTER GATE B ASSEMBLIES.
2. LOAD SIX PALLET UNITS AND INSTALL TWO CENTER GATES AND STRUTS.
3. INSTALL THREE SIDE FILL ASSEMBLIES.

BILL OF MATERIAL		
LUMBER	LINEAR FEET	BOARD FEET
2" X 4"	169	113
NAILS	NO. REQD	POUNDS
10d (3")	176	2-3/4

LOAD AS SHOWN

<u>ITEM</u>	<u>QUANTITY</u>	<u>WEIGHT (APPROX)</u>
PALLET UNIT	6	5,712 LBS
DUNNAGE		229 LBS
CONTAINER		6,050 LBS
TOTAL WEIGHT		11,991 LBS (APPROX)



ISOMETRIC VIEW

KEY NUMBERS

- ① END BLOCKING ASSEMBLY (2 REQD). SEE THE "END BLOCKING ASSEMBLY C" DETAIL ON PAGE 15.
- ② SEPARATOR ASSEMBLY A (2 REQD). SEE THE "END BLOCKING ASSEMBLY C" DETAIL AND "NOTE ●" ON PAGE 15.
- ③ SEPARATOR ASSEMBLY (2 REQD). SEE THE "SEPARATOR B" DETAIL ON PAGE 15.
- ④ FILL PIECE, PLYWOOD, 1/2" X 24" X 80" (2 REQD).
- ⑤ CENTER FILL ASSEMBLY (1 REQD). SEE THE "CENTER FILL B" DETAIL ON PAGE 16.

RECOMMENDED SEQUENTIAL LOADING PROCEDURES

1. PREFABRICATE TWO END BLOCKING ASSEMBLIES C, TWO SEPARATOR A ASSEMBLIES, TWO SEPARATOR B ASSEMBLIES AND ONE CENTER FILL B ASSEMBLY.
2. INSTALL ONE END BLOCKING ASSEMBLY AND LOAD THIRTY-SIX CONTAINERS.
3. INSTALL ONE END BLOCKING ASSEMBLY AND LOAD THIRTY-SIX CONTAINERS.
4. INSTALL ONE SEPARATOR B ASSEMBLY, POSITION ONE PLYWOOD FILL PIECE AGAINST RETAINER PIECE OF SEPARATOR B, LOAD TWELVE CONTAINERS AND INSTALL THE REMAINING PLYWOOD FILL PIECE.
5. INSTALL ONE SEPARATOR B ASSEMBLY AND LOAD ONE STACK OF SIX CONTAINERS AGAINST WALL SIDE OF CONTAINER.
6. INSTALL THE TWO SEPARATOR A ASSEMBLIES, LOAD THE REMAINING THIRTY CONTAINERS AND INSTALL THE CENTER FILL ASSEMBLY.

BILL OF MATERIAL

LUMBER	LINEAR FEET	BOARD FEET
1" X 4"	29	9
2" X 4"	296	197
NAILS	NO. REQD	POUNDS
6d (2")	128	3/4
10d (3")	144	2-1/4

LOAD AS SHOWN

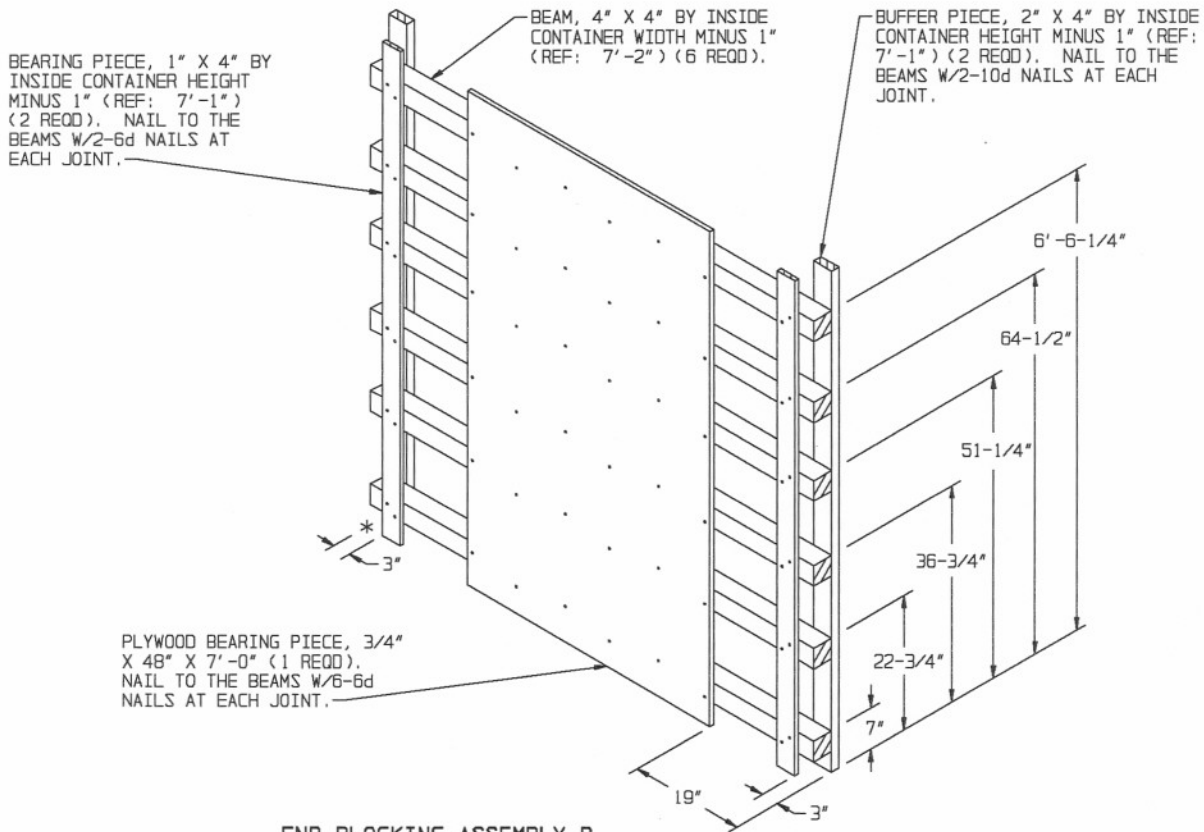
ITEM	QUANTITY	WEIGHT (APPROX)
CONTAINER	120	10,320 LBS
DUNNAGE		570 LBS
CONTAINER		6,050 LBS
TOTAL WEIGHT		16,940 LBS (APPROX)

TIE PIECE, 2" X 4" BY INSIDE
CONTAINER WIDTH MINUS 1"
(REF: 7'-2") (1 REQD).

PLYWOOD, 3/4" X 48" BY
INSIDE CONTAINER HEIGHT
MINUS 1" (REF: 7'-1")
(1 REQD). NAIL TO THE
HORIZONTAL PIECE W-1/6d
NAIL EVERY 8".

PLYWOOD, 3/4" X 38" BY
INSIDE CONTAINER HEIGHT
MINUS 1" (REF: 7'-1")
(1 REQD). NAIL TO THE
HORIZONTAL PIECE W-1/6d
NAIL EVERY 8".

END BLOCKING ASSEMBLY A



END BLOCKING ASSEMBLY B

DETAILS

RETAINER PIECE, 2" X 4" X 6'-8"
(DOUBLED) (2 REQD). LAMINATE
THE SECOND PIECE TO THE FIRST
W/5-10d NAILS.

3/4"

LOAD BEARING PIECE, PLYWOOD, 1/2"
X 24" BY INSIDE CONTAINER WIDTH
MINUS 1" (REF: 7'-2") (2 REQD).
NAIL TO THE DOUBLED RETAINER
PIECES W/3-6d NAILS AT EACH JOINT.

3/4"

73"

32"

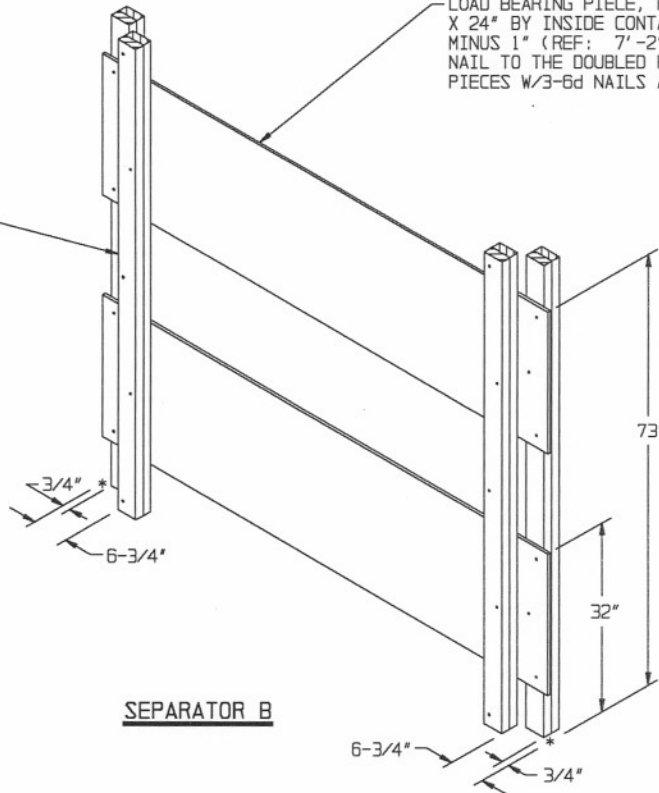
NOTE ●:

SEPARATOR A, PIECE MARKED ② ON
PAGE 12, WILL BE THE SAME AS *END
BLOCKING ASSEMBLY C* DETAILED AT RIGHT.

END BLOCKING ASSEMBLY C

RETAINER PIECE, 2" X 4" X 6'-8"
(DOUBLED) (4 REQD). LAMINATE
THE SECOND PIECE TO THE FIRST
W/5-10d NAILS.

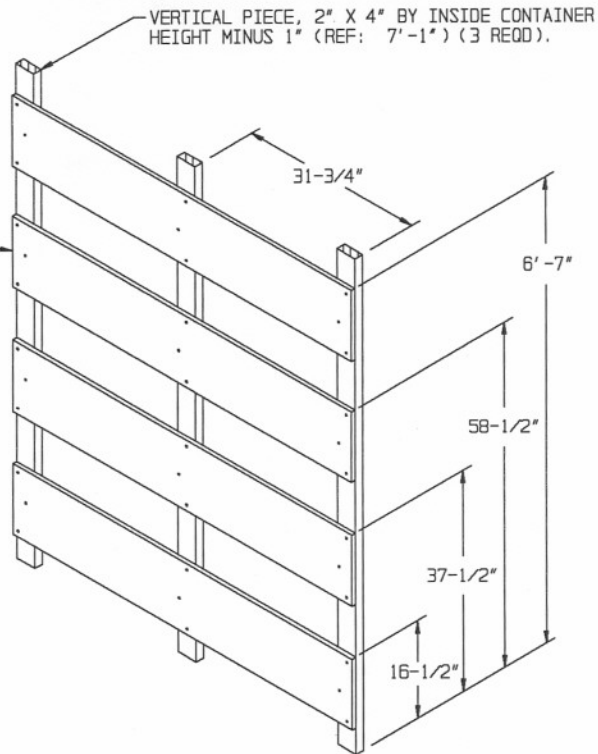
LOAD BEARING PIECE, PLYWOOD, 1/2"
X 24" BY INSIDE CONTAINER WIDTH
MINUS 1" (REF: 7'-2") (2 REQD).
NAIL TO THE DOUBLED RETAINER
PIECES W/3-6d NAILS AT EACH JOINT.



SEPARATOR B

DETAILS

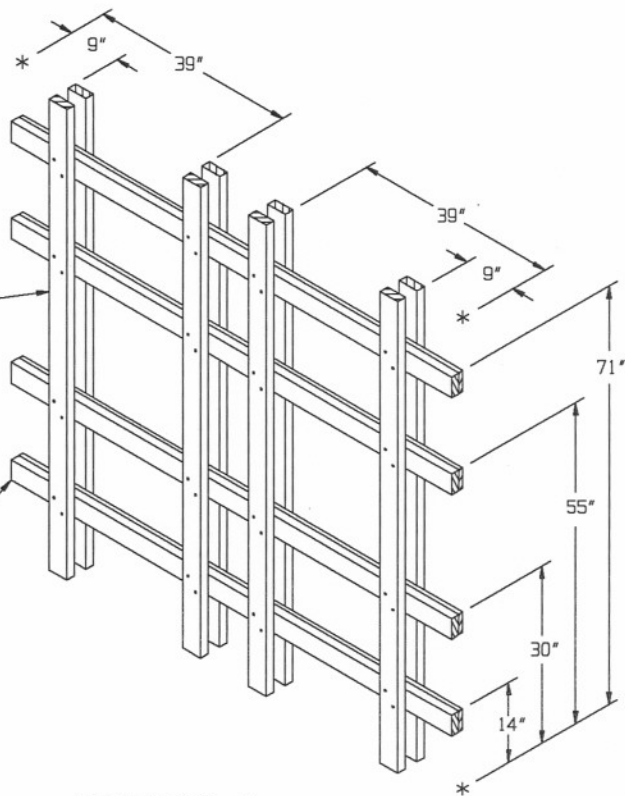
LOAD BEARING PIECE, PLYWOOD, 1/2" X 12" X 67" (4 REQD). NAIL TO THE VERTICAL PIECES W/3-6d NAILS AT EACH JOINT.



CENTER FILL A

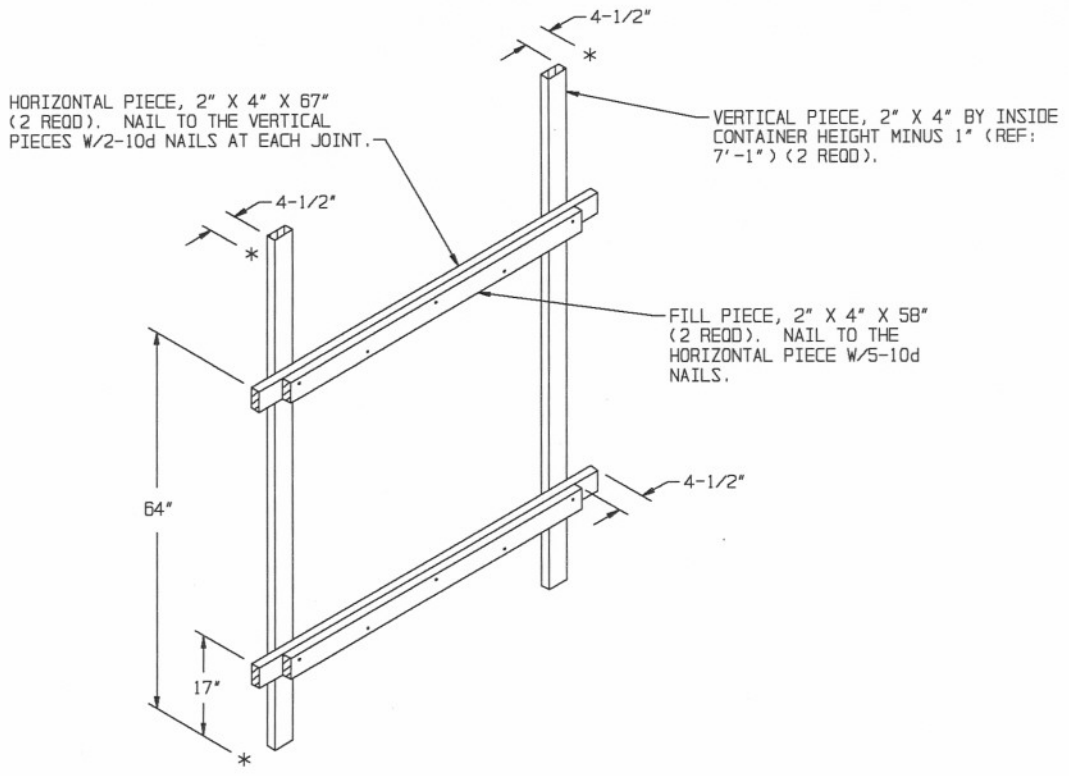
VERTICAL PIECE, 2" X 4" BY INSIDE CONTAINER HEIGHT MINUS 1" (REF: 7'-1") (8 REQD). NAIL TO THE HORIZONTAL PIECES W/2-10d NAILS AT EACH JOINT.

HORIZONTAL PIECE, 1" X 4" X 7'-4" (1 REQD) AND 2" X 4" X 7'-4" (1 REQD). NAIL THE 1" MATERIAL TO THE 2" MATERIAL W/8-6d NAILS.

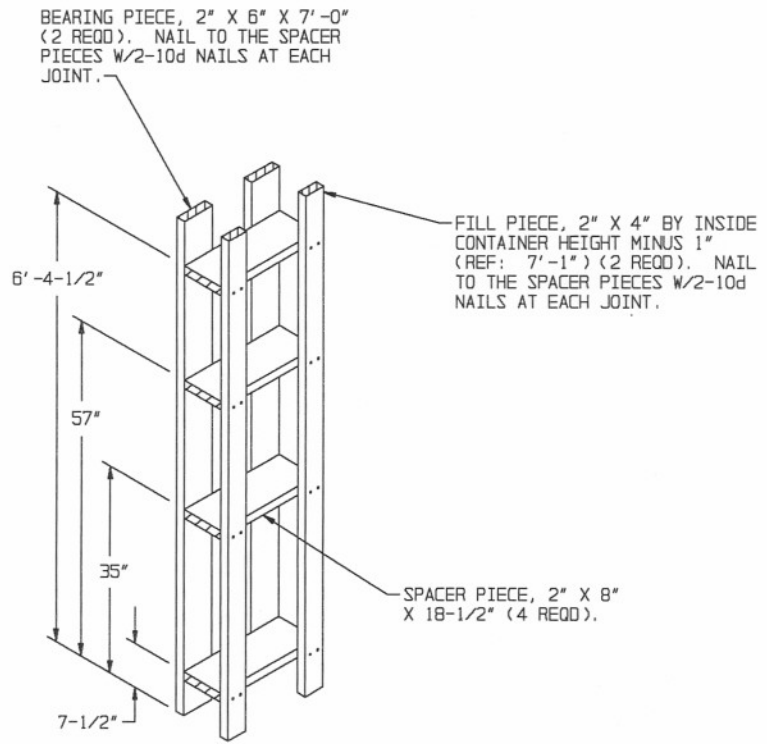


CENTER FILL B

DETAILS



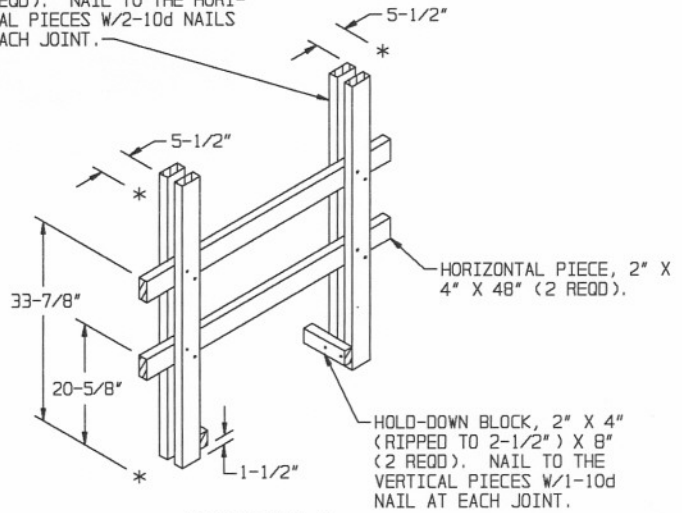
SIDE FILL A



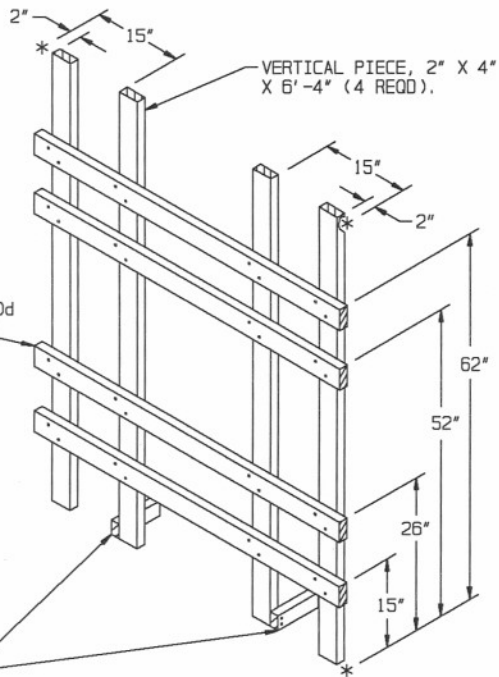
SIDE FILL B

DETAILS

VERTICAL PIECE, 2" X 4" X 48"
(4 REQD). NAIL TO THE HORIZONTAL
PIECES W/2-10d NAILS
AT EACH JOINT.



SIDE FILL C

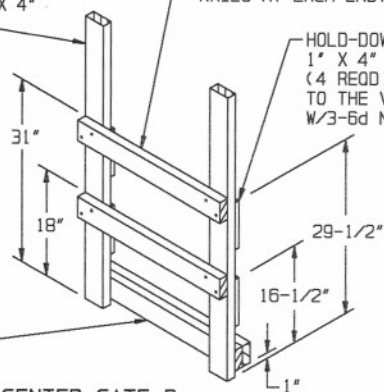


CENTER GATE A

VERTICAL PIECE, 2" X 4"
X 48" (2 REQD).

HORIZONTAL PIECE, 2" X 4"
X 28" (2 REQD). NAIL TO
THE VERTICAL PIECES W/2-10d
NAILS AT EACH END.

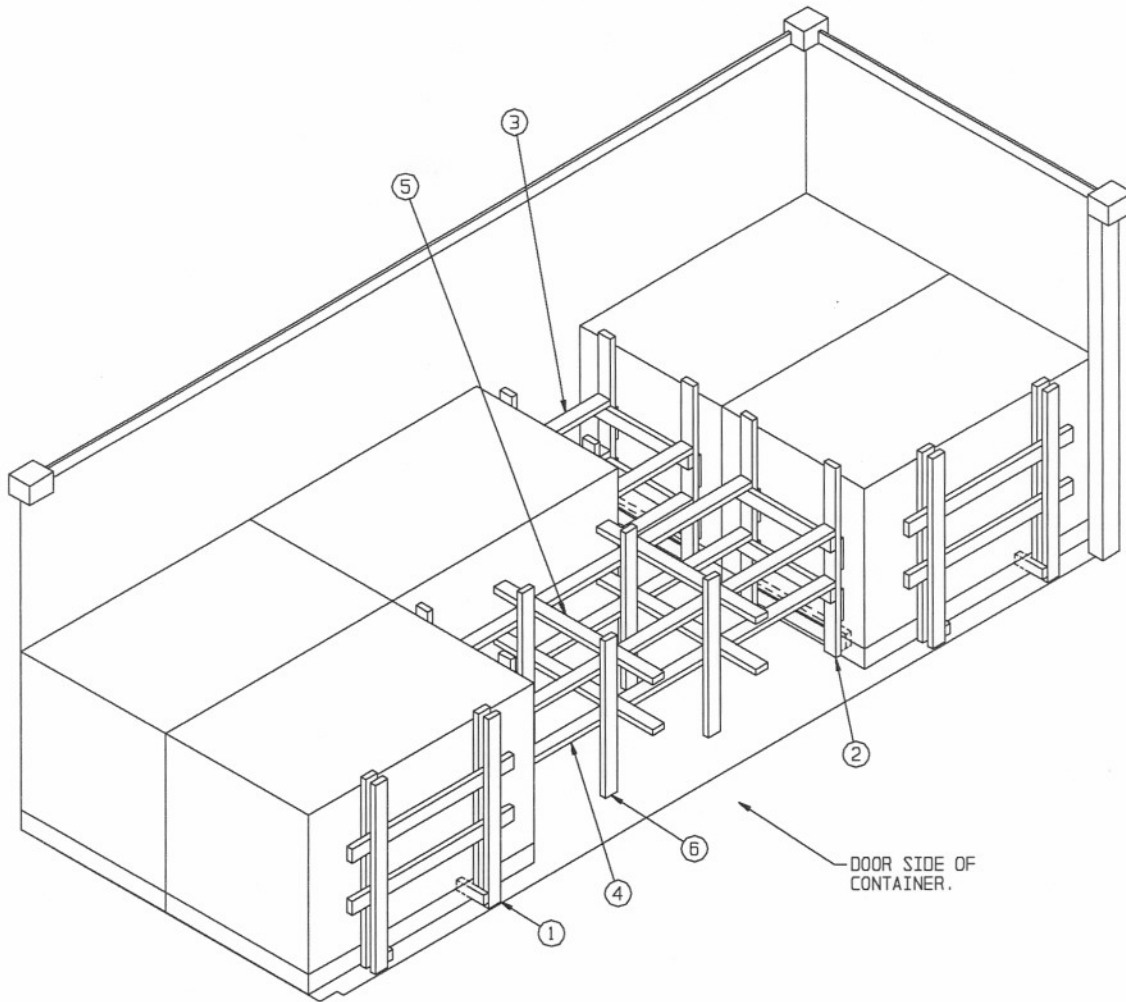
HOLD-DOWN BLOCK,
1" X 4" X 8"
(4 REQD). NAIL
TO THE VERTICAL PIECE
W/3-6d NAILS.



CENTER GATE B

HOLD-DOWN PIECE, 2" X 4"
X 28" (DOUBLED) (1 REQD).
NAIL THE FIRST PIECE
TO THE VERTICAL PIECES
W/2-10d NAILS AT EACH END.
NAIL THE SECOND PIECE TO
THE FIRST W/3-10d NAILS.

DETAILS



ISOMETRIC VIEW

KEY NUMBERS

- ① SIDE FILL ASSEMBLY (2 REQD). SEE PIECE MARKED ① ON PAGE 10.
- ② CENTER GATE (4 REQD). SEE PIECE MARKED ② ON PAGE 10.
- ③ STRUT, 2" X 4" BY LENGTH TO SUIT (REF: 27'-1/2") (4 REQD). NAIL TO PIECE MARKED ② W/2-10d NAILS AT EACH END.
- ④ STRUT, 2" X 4" BY LENGTH TO SUIT (REF: 7'-10") (4 REQD). NAIL TO PIECE MARKED ② W/2-10d NAILS AT EACH END.
- ⑤ HORIZONTAL STRUT BRACING, 2" X 4" BY LENGTH TO SUIT (REF: 47") (4 REQD). NAIL TO THE STRUTS, PIECE MARKED ④, W/2-10d NAILS AT EACH JOINT.
- ⑥ VERTICAL STRUT BRACING, 2" X 4" X 40" (4 REQD). NAIL TO PIECE MARKED ④ W/2-10d NAILS AT EACH JOINT.

TYPICAL REDUCED LOAD PROCEDURES FOR
PALLETIZED ALUMINUM CONTAINER LOAD

