
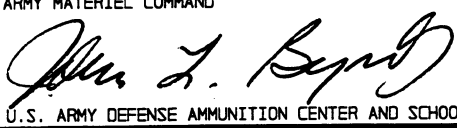



LOADING AND BRACING IN 45 FOOT INTERMODAL CONTAINER OF 105MM HOWITZER, M119

INDEX

<u>ITEM</u>	<u>PAGE(S)</u>
GENERAL NOTES AND MATERIAL SPECIFICATIONS - - - - -	2
BOX DETAILS - - - - -	3-5
LOADING AND BRACING PROCEDURES - - - - -	6-7
DUNNAGE DETAILS - - - - -	8-10

U.S. ARMY MATERIEL COMMAND DRAWING			
APPROVED, U.S. ARMY ARMAMENT, MUNITIONS AND CHEMICAL COMMAND 	DRAFTSMAN S. WILSON	TECHNICIAN	ENGINEER G. WILLIS
APPROVED BY ORDER OF COMMANDING GENERAL, U.S. ARMY MATERIEL COMMAND 	VALIDATION ENGINEERING DIVISION 	TRANSPORTATION ENGINEERING DIVISION W. Frenck	LOGISTICS ENGINEERING OFFICE W. Ernst
JULY 1994			
CLASS	DIVISION	DRAWING	FILE
19	48	8105	15WE1

DO NOT SCALE

GENERAL NOTES

- A. THIS DOCUMENT HAS BEEN PREPARED AND ISSUED IN ACCORDANCE WITH AR 740-1 AND AUGMENTS TM 743-200-1 (CHAPTER 5).
- B. THE LOAD AS SHOWN IS BASED ON A 45'-0" LONG BY 8'-0" WIDE BY 9'-6" HIGH END OPENING TYPE INTERMODAL CONTAINER WITH INSIDE DIMENSIONS OF 44'-4" LONG BY 92" WIDE BY 105" HIGH AND A TARE WEIGHT OF 8,800 POUNDS. THE LOAD AS SHOWN CAN BE SHIPPED BY RAIL IN A TRAILER-ON-FLATCAR (TOFC) OR CONTAINER-ON-FLATCAR (COFC) CONFIGURATION AND IS ALSO ACCEPTABLE FOR SHIPMENT BY HIGHWAY AND WATER MODES OF TRANSPORT.
- C. LADING DATA (AS CONFIGURED FOR SHIPPING):
ITEM DIMENSIONS - - 16'-4" LONG BY 6'-0" WIDE BY 53" HIGH.
ITEM GROSS WEIGHT - 4,350 POUNDS (APPROX).
- D. ONLY SERVICEABLE CONTAINERS CAPABLE OF SAFELY TRANSPORTING THE LADING TO DESTINATION WITHOUT DAMAGE WILL BE SELECTED. CONTAINERS SELECTED MUST HAVE "SOUND" FLOORS WHICH PROVIDE NAIL RETENTION PROPERTIES EQUAL TO OR BETTER THAN THE SPECIFIED DUNNAGE LUMBER.
- E. THE NUMBER OF LADING UNITS MAY BE ADJUSTED TO FIT THE SIZE OF THE CONTAINER TO BE LOADED OR THE QUANTITY TO BE SHIPPED. HOWEVER, THE APPROVED METHODS SHOWN MUST BE FOLLOWED AS CLOSELY AS POSSIBLE FOR BLOCKING, BRACING, AND STAYING OF THE DESIGNATED ITEMS. ADDITIONALLY, THE LADING ITEMS MUST BE POSITIONED SO THE LOAD WEIGHT IS DISTRIBUTED AS EVENLY AS POSSIBLE WITHIN THE CONTAINER.
- F. OTHER TYPES OF LADING UNITS MAY BE LOADED IN A CONTAINER WHICH IS PARTIALLY LOADED WITH THE DESIGNATED ITEM, PROVIDED THE TOTAL LOAD IS COMPATIBLE, EXISTING DIRECTIVES ARE NOT VIOLATED, AND THE OTHER LADING ITEMS ARE BLOCKED AND BRACED TO EQUAL THE BLOCKING AND BRACING CRITERIA SPECIFIED. CAUTION: REGARDLESS OF THE QUANTITY OF LADING ITEMS TO BE SHIPPED, THE "MAXIMUM GROSS WEIGHT" OF THE CONTAINER INCLUDING LADING AND DUNNAGE MUST NOT BE EXCEEDED.

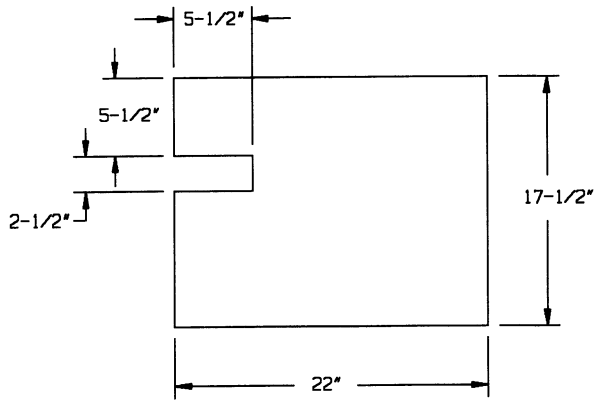
(CONTINUED AT RIGHT)

MATERIAL SPECIFICATIONS

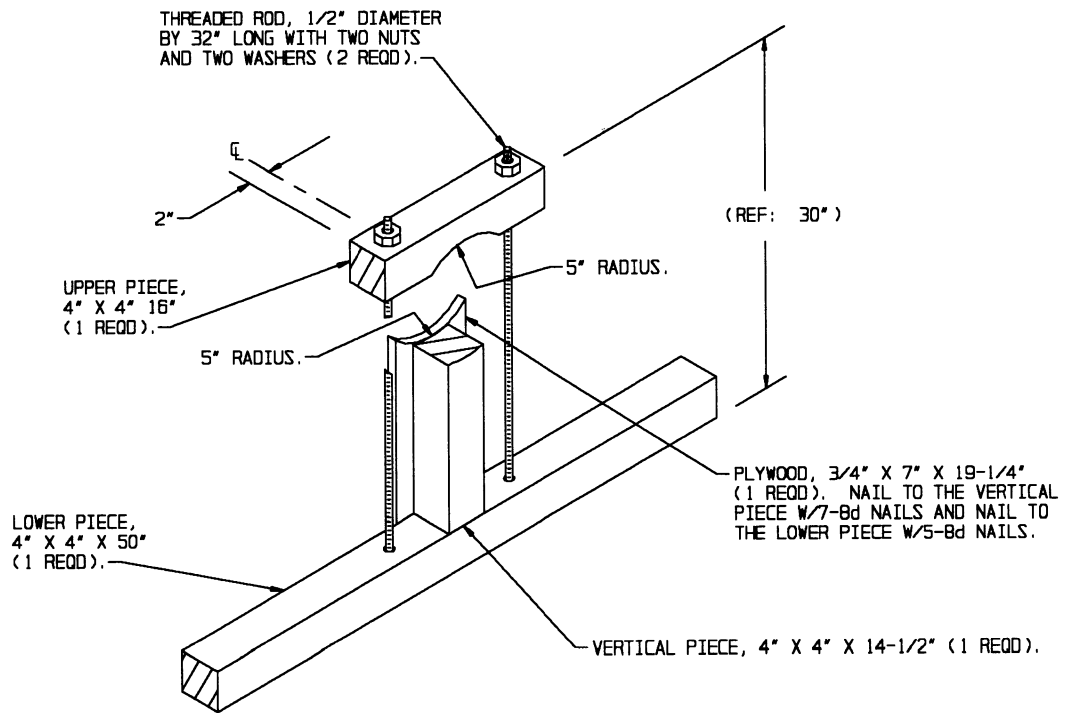
- LUMBER** - - - - - : FED SPEC MM-L-751; DOUGLAS FIR OR COMPARABLE LUMBER WITH STRAIGHT GRAIN AND FREE FROM MATERIAL DEFECTS.
- NAILS** - - - - - : FED SPEC FF-N-105; COMMON.
- PLYWOOD** - - - - - : COMMERCIAL ITEM DESCRIPTION A-A-55057, TYPE A, CONSTRUCTION AND INDUSTRIAL PLYWOOD, INTERIOR WITH EXTERIOR GLUE, GRADE C-D. IF SPECIFIED GRADE IS NOT AVAILABLE, A BETTER INTERIOR OR AN EXTERIOR GRADE MAY BE SUBSTITUTED.
- STRAPPING, STEEL** - - : ASTM D3953; FLAT STRAPPING, TYPE 1, HEAVY DUTY, FINISH A, B (GRADE 2), OR C.
- SEAL, STRAP** - - - - : ASTM D3953; CLASS H, FINISH A, B (GRADE 2), OR C, DOUBLE NOTCH TYPE, STYLE I, II, OR IV.
- ANTI-CHAFING MATERIAL** - - - - - : MIL-B-121 (OR EQUAL); NEUTRAL BARRIER MATERIAL.
- TAPE** - - - - - : COMMERCIAL GRADE; PRESSURE SENSITIVE FIBER TAPE.
- BARRIER MATERIAL** - - : FED SPEC PPP-B-1055; WATERPROOFED, FLEXIBLE, CLASS M1.
- STRAP ANCHOR PLATE** : NSN 5340-00-252-3014 (FOR 1-1/4" STRAP).
- STRAP ANCHOR PLATE NAIL** - - - - - : NSN 5340-00-290-7140; SIGNODE MICROLOCK NAIL, NO. 225, 2-1/4" LONG, 7 GAGE (OR EQUAL).
- WEB STRAP TIEDOWN ASSEMBLY** - - : WEBBING, UNIVERSAL TIEDOWN, NSN 5340-00-980-9277, PN10900880, OR NSN 1670-00-725-1437, PN1376-013, OR NSN 5340-01-089-4997, PN11669588, OR NSN 5340-01-204-3009, PN9392419.
- THREADED ROD, NUTS, WASHERS AND STAPLES** - : COMMERCIAL GRADE.

(GENERAL NOTES CONTINUED)

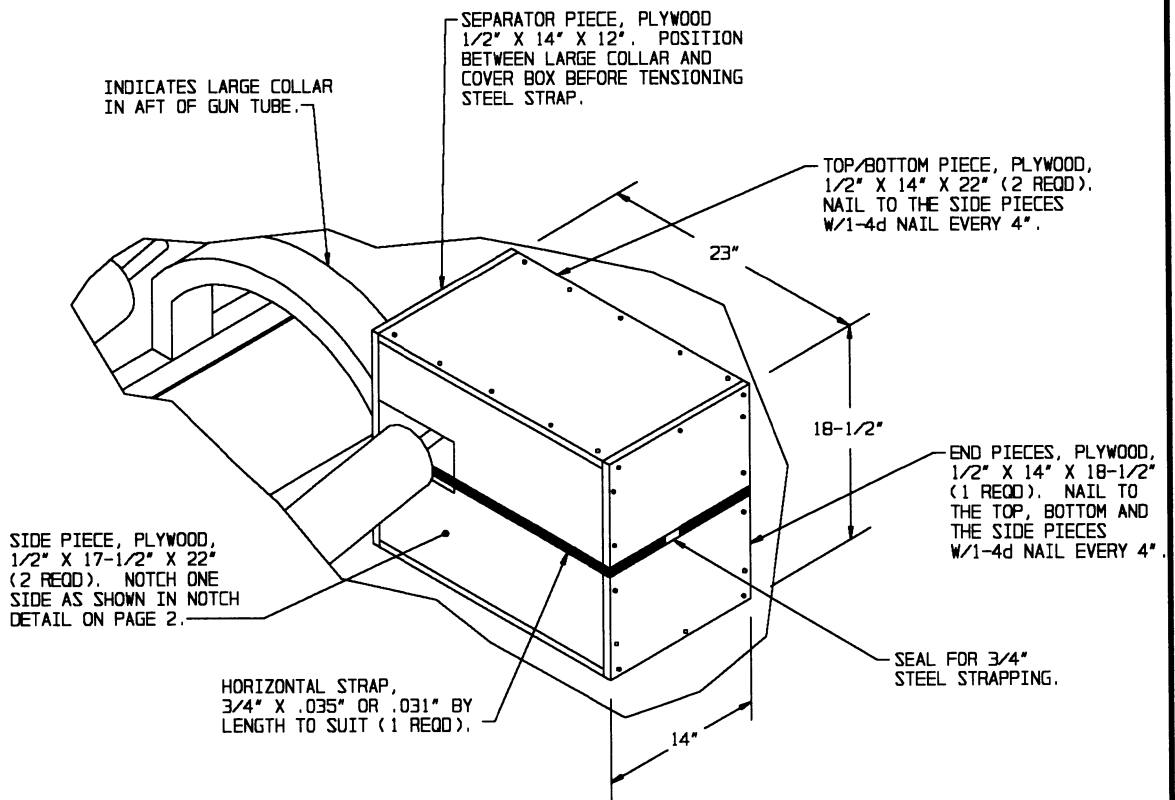
- G. HOLD-DOWN STRAPS WILL BE TENSIONED SUFFICIENTLY TO CAUSE SLIGHT DEPRESSION OF THE TRAILS. CAUTION: IT IS RECOMMENDED THAT THE HOLD-DOWN STRAPS BE INSTALLED TO APPROXIMATE THE ANGLE SHOWN; HOWEVER, IF RESTRICTED FLOOR SPACE OR THE LOCATION OF INTEGRAL TIEDOWN FACILITIES PREVENTS THIS, CARE MUST BE EXERCISED TO ENSURE THAT EACH PAIR OF HOLD-DOWN STRAPS ARE INSTALLED SO THEIR RETENTION FORCES ACT IN OPPOSING LONGITUDINAL DIRECTIONS.
- H. NOTICE: A STAGGERED NAILING PATTERN WILL BE USED WHEREVER POSSIBLE WHEN NAILS ARE DRIVEN INTO JOINTS OF DUNNAGE ASSEMBLIES. ALSO, A STAGGERED NAILING PATTERN WILL BE USED WHEN DUNNAGE IS NAILED TO THE FLOOR OF THE CONTAINER, OR WHEN LAMINATING DUNNAGE. THE NAILING PATTERN WILL BE ADJUSTED AS REQUIRED SO THAT A NAIL DOES NOT PENETRATE INTO OR NEAR A CRACK BETWEEN THE FLOOR BOARDS. ADDITIONALLY THE NAILING PATTERN FOR AN UPPER PIECE OF LAMINATED DUNNAGE WILL BE ADJUSTED AS REQUIRED SO THAT A NAIL FOR THAT PIECE WILL NOT BE DRIVEN THROUGH ONTO OR RIGHT BESIDE A NAIL IN A LOWER PIECE.
- J. DUNNAGE LUMBER SPECIFIED THROUGHOUT THIS PROCEDURAL DRAWING IS OF NOMINAL SIZE UNLESS OTHERWISE DIMENSIONED. FOR EXAMPLE, 2" X 6" MATERIAL IS ACTUALLY 1-1/2" THICK BY 5-1/2" WIDE AND 2" X 10" MATERIAL IS ACTUALLY 1-1/2" THICK BY 9-1/4" WIDE.
- K. WHEN ANY STEEL STRAP IS SEALED AT AN END-OVER-END LAP JOINT, A MINIMUM OF ONE SEAL WITH TWO PAIR OF NOTCHES WILL BE USED TO SEAL THE JOINT WHEN A NOTCH-TYPE SEALER IS BEING USED. A MINIMUM OF TWO SEALS, BUTTED TOGETHER, WITH TWO PAIR OF CRIMPS PER SEAL WILL BE USED TO SEAL THE JOINT WHEN A CRIMP-TYPE SEALER IS BEING USED. REFER TO THE "STRAP JOINT A" AND "STRAP JOINT B" DETAILS ON PAGE 4 FOR GUIDANCE.
- L. IF THE CONTAINER FURNISHED FOR SHIPMENT OF THIS ITEM IS EQUIPPED WITH INTEGRAL TIE DOWN FACILITIES EITHER IN THE PERIMETER OF THE FLOOR OR AT THE BASE OF THE SIDEWALLS, WEB STRAP TIEDOWN ASSEMBLIES MAY BE USED AS AN ALTERNATE TO THE STEEL HOLD-DOWN STRAPS AND ANCHOR PLATES. SEE SPECIAL NOTE 3 ON PAGE 7 AND THE MATERIAL SPECIFICATIONS FOR WEB STRAP TIEDOWN ASSEMBLIES ON PAGE 2. NOTE: TO BE ACCEPTABLE FOR USE, THE CONTAINER TIE DOWN FACILITIES MUST BE ABLE TO WITHSTAND A MINIMUM OF 2,000 POUNDS PULLING FORCE WITHOUT DEFORMING.
- M. CONVERSION TO METRIC EQUIVALENTS: DIMENSIONS WITHIN THIS DOCUMENT ARE EXPRESSED IN INCHES, AND WEIGHTS ARE EXPRESSED IN POUNDS. WHEN NECESSARY, THE METRIC EQUIVALENTS MAY BE COMPUTED ON THE BASIS OF ONE INCH EQUALS 25.4 MM AND ONE POUND EQUALS 0.45 KG.
- N. FOR ADDITIONAL GUIDANCE, ATTENTION IS DIRECTED TO THE "SPECIAL NOTES" SECTION WHICH IS IMMEDIATELY ADJACENT TO THE DEPICTED OUTLOADING METHOD ON PAGE 7.



NOTCH DETAIL

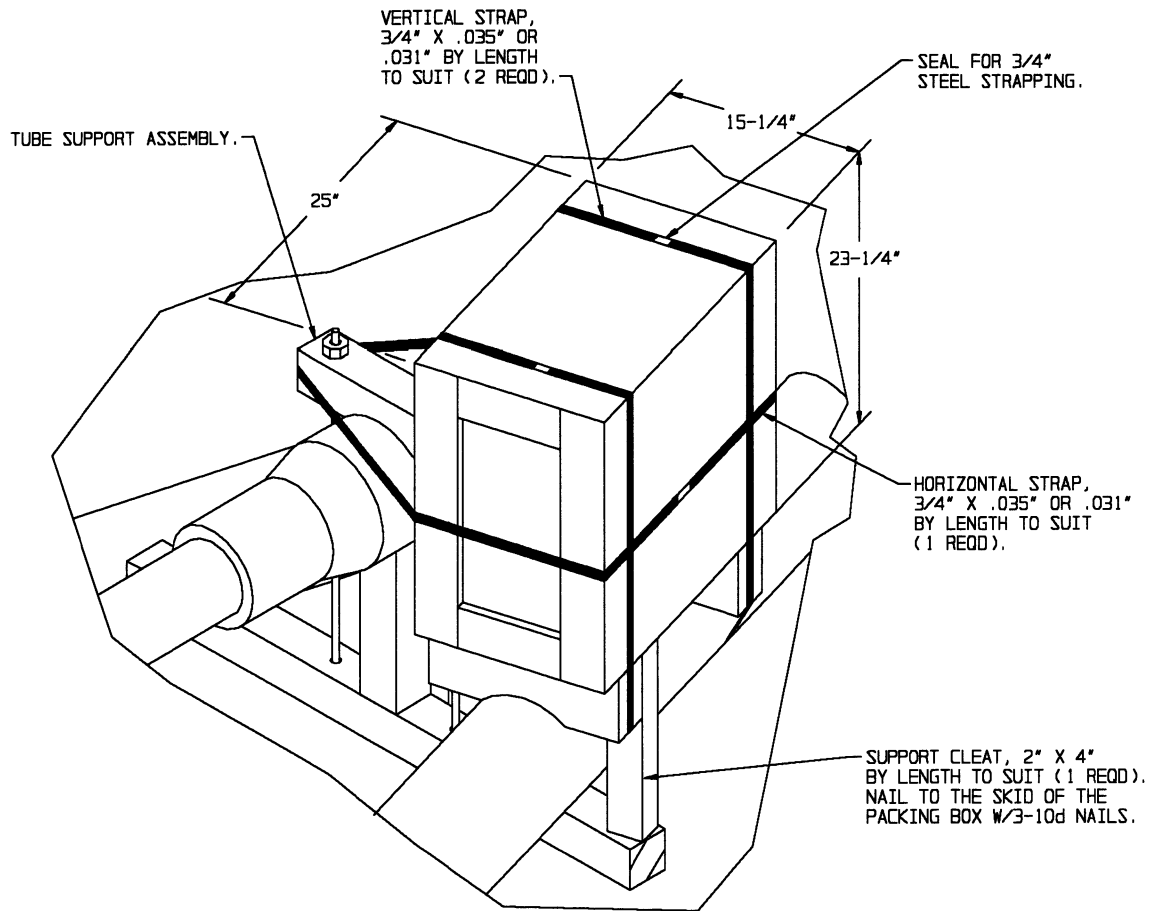


TUBE SUPPORT ASSEMBLY



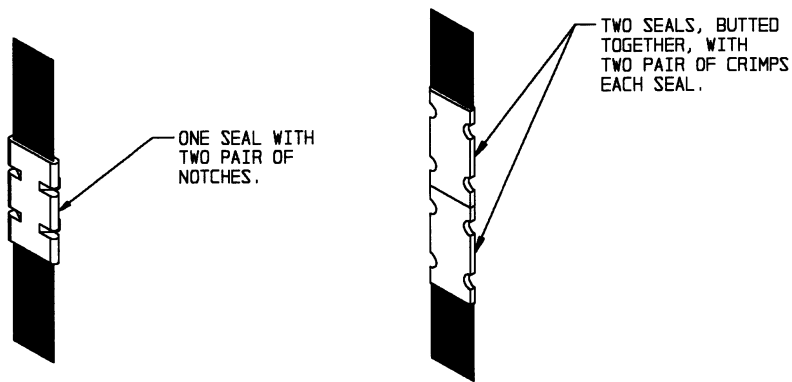
COVER BOX DETAIL

NOTE: CONSTRUCT COVER BOX WITH APPROPRIATE
NOTCHES TO FIT AROUND HARDWARE.



SECUREMENT OF PACKING BOX

NOTE: WEIGHT OF PACKING BOX AND ITS CONTENTS IS INCLUDED IN THE ITEM GROSS WEIGHT IDENTIFIED IN NOTE "C" ON PAGE 2.



STRAP JOINT A

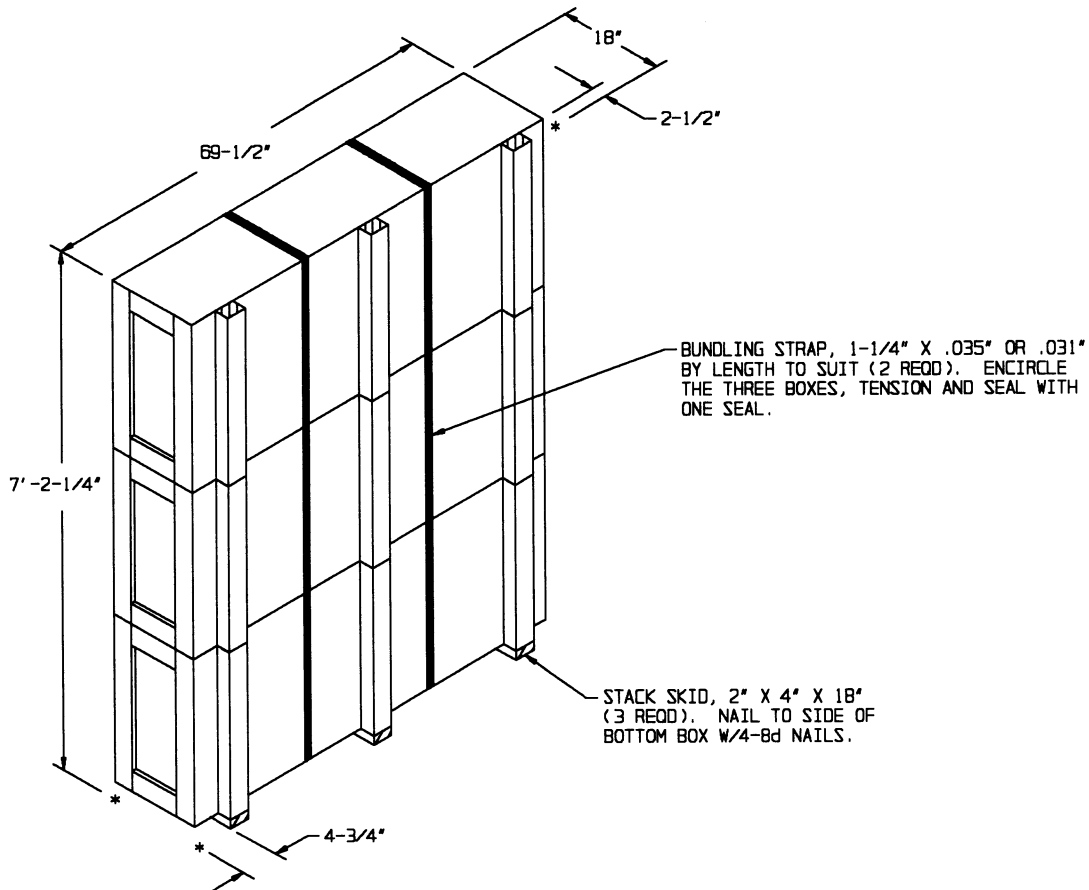
METHOD OF SECURING A STRAP JOINT WHEN USING A NOTCH-TYPE SEALER.

STRAP JOINT B

METHOD OF SECURING A STRAP JOINT WHEN USING A CRIMP-TYPE SEALER.

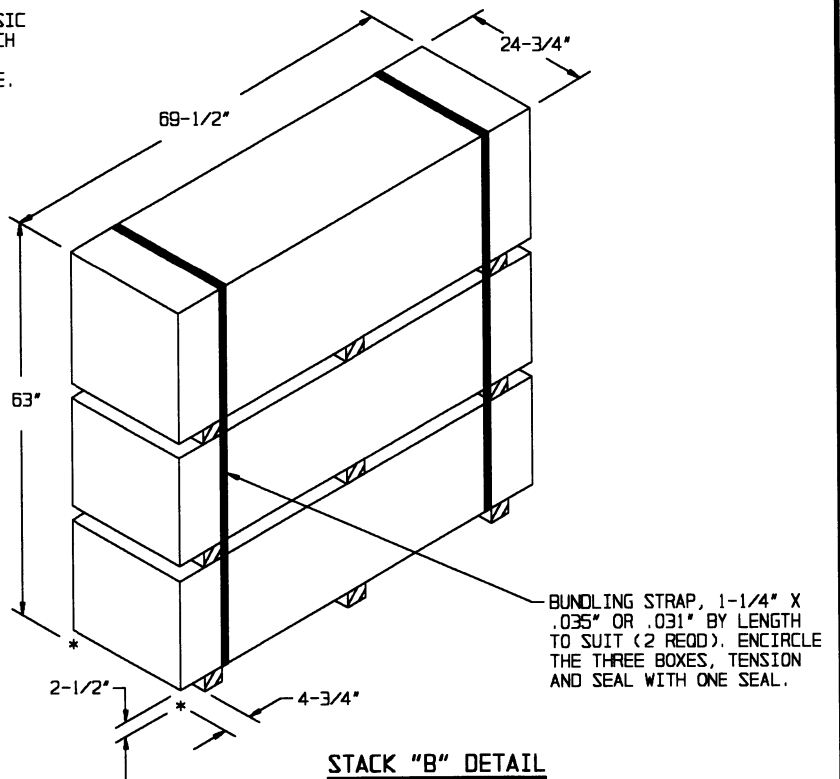
END-OVER-END LAP JOINT DETAILS

DETAILS



STACK "A" DETAIL

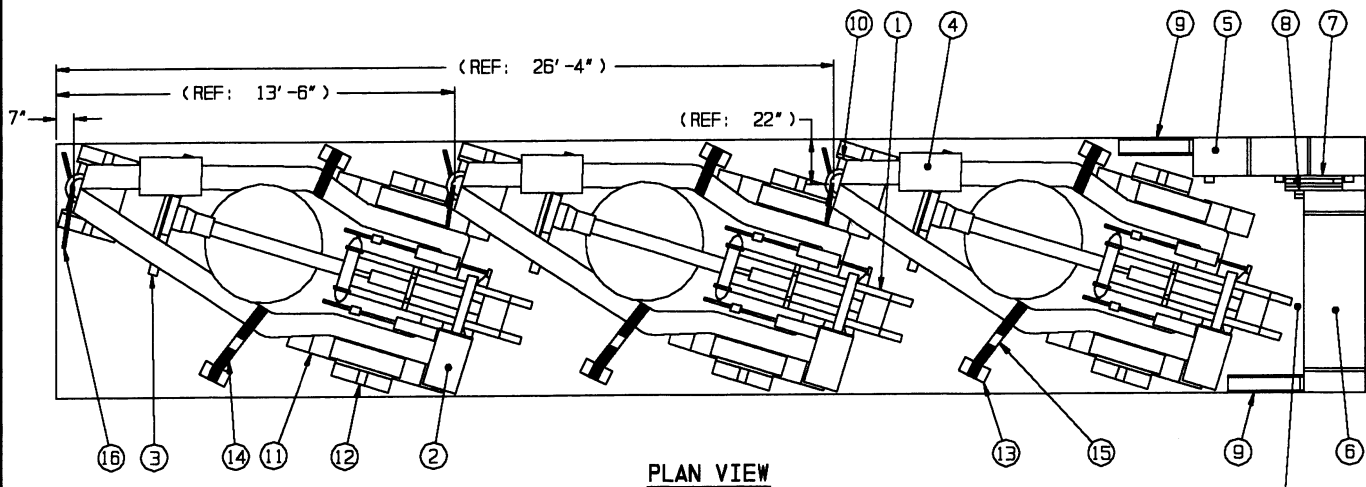
NOTE: STACK "A" CONTAINS THREE BOXES OF BASIC ISSUE ITEMS IDENTIFIED AS "BOX 1 OF 2". EACH BOX IS 69-1/2" X 28-1/4" X 18" AND WEIGHS 238 POUNDS. EACH BOX IS STACKED ON ITS SIDE.



STACK "B" DETAIL

NOTE: STACK "B" CONTAINS THREE BOXES OF BASIC ISSUE ITEMS IDENTIFIED AS "BOX 2 OF 2". EACH BOX IS 69-1/2" X 24-3/4" X 21" AND WEIGHS 287 POUNDS. EACH BOX IS STACKED UPRIGHT.

NOTE: REFERENCE DIMENSIONS ARE MEASURED TO THE CENTER OF THE LUNETTE.



PLAN VIEW

3" MINIMUM CLEARANCE
REQUIRED BETWEEN AFT
END OF HOWITZER AND
STACK "B".

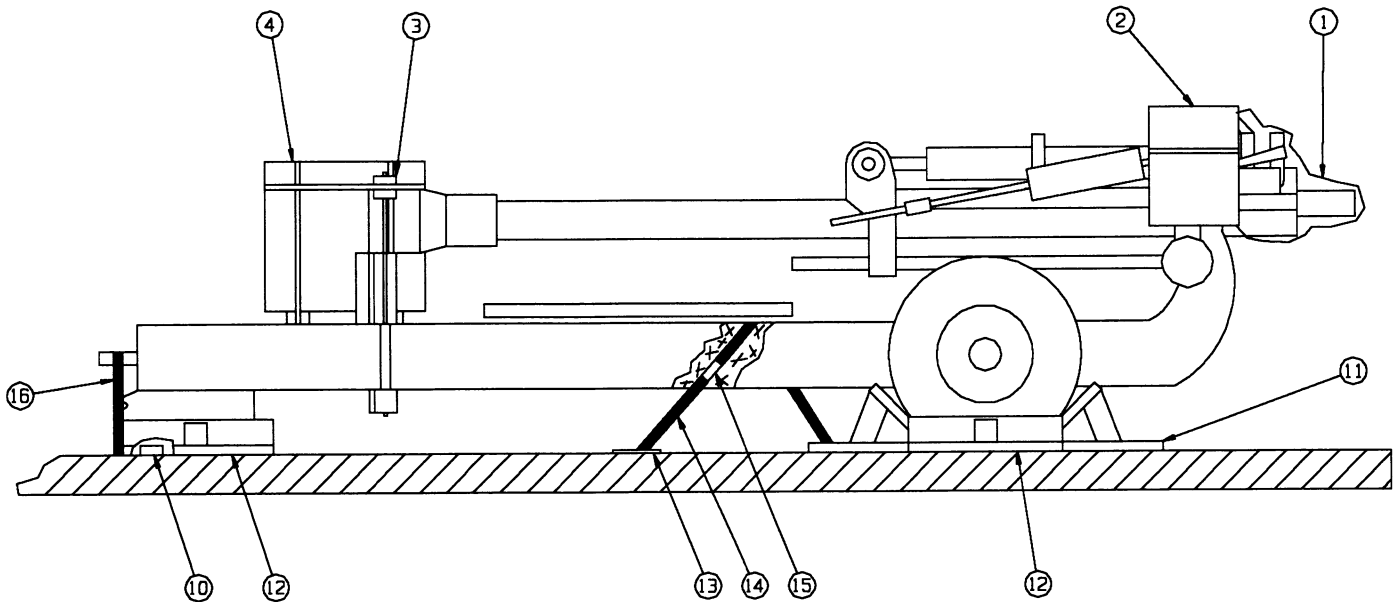
(KEY NUMBERS CONTINUED)

- ⑫ SIDE BLOCKING (12 REQD). SEE THE SIDE BLOCKING DETAIL ON PAGE 10. POSITION AGAINST SIDE OF A TIRE OR AGAINST SIDE OF TOWING HITCH AND NAIL FLOOR CLEAT TO THE CONTAINER FLOOR W/4-10d NAILS.
- ⑬ STRAP ANCHOR PLATE (6 REQD). ATTACH HOLD-DOWN STRAP TO THE STRAP ANCHOR PLATE. NAIL TO THE CONTAINER FLOOR W/6 ANCHOR PLATE NAILS. SEE THE "STRAP ANCHOR PLATE" DETAIL ON PAGE 10.
- ⑭ HOLD-DOWN STRAP, 1-1/4" X .035" OR .031" BY LENGTH TO SUIT STEEL STRAPPING (6 REQD). ENCIRCLE TUBULAR TRAIL ARM OF HOWITZER, CONNECT AND TENSION ENDS OF STRAP. SEE GENERAL NOTE "G" ON PAGE 2 AND SPECIAL NOTES 2 AND 3 ON PAGE 7.
- ⑮ SEAL FOR 1-1/4" STRAPPING (6 REQD, 1 PER STRAP). CRIMP EACH SEAL WITH TWO PAIR OF NOTCHES. SEE GENERAL NOTE "K" ON PAGE 2.
- ⑯ STEEL STRAP, PERFORATED, 1-1/4" X .035" X 4'-0" (3 REQD). INSTALL THROUGH EYE OF LUNETTE AND NAIL EACH END TO CONTAINER FLOOR W/4 APPROPRIATELY SIZE ANNULAR RING LOCK NAILS.

KEY NUMBERS

- ① FLEXIBLE BARRIER MATERIAL, GREASEPROOF AND WATERPROOF (3 REQD). FORM TO ENCIRCLE BREECH MECHANISMS AND TAPE IN PLACE. CUT 2" LONG SLIT IN MATERIAL AT LOWEST POINT UNDERNEATH TO PROVIDE DRAINAGE FOR CONDENSATION.
- ② COVER BOX, 14" X 23" X 18-1/2" (3 REQD). SEE DETAIL ON PAGE 3. CONSTRUCT FROM 1/2" THICK PLYWOOD AND INSTALL TO PROTECT SIDE BRACKETS ON AFT END. SECURE IN PLACE WITH ONE 3/4" WIDE STEEL STRAP THREADED THROUGH LARGE COLLAR BRACKET AND AROUND THE COVER BOX.
- ③ TUBE SUPPORT ASSEMBLY (3 REQD). SEE DETAIL ON PAGE 3. AFTER ENGAGING TRAVEL LOCK, INSTALL TUBE SUPPORT BETWEEN MUZZLE AND TRAILS.
- ④ PACKING BOX, 25" X 15-1/4" X 23-1/4" (1 REQD). PACK WITH SIGHT COMPONENTS BELONGING WITH HOWITZER. SECURE IN PLACE WITH ONE HORIZONTAL 3/4" WIDE STEEL STRAP WRAPPED AROUND UPPER PIECE OF TUBE SUPPORT ASSEMBLY AND TWO VERTICAL 3/4" STEEL STRAPS WRAPPED AROUND THE TRAIL. SEE DETAIL ON PAGE 4 FOR SECUREMENT OF PACKING BOX.
- ⑤ STACK "A" (1 REQD). SEE STACK "A" DETAIL ON PAGE 5.
- ⑥ STACK "B" (1 REQD). SEE STACK "B" DETAIL ON PAGE 5.
- ⑦ SPACER ASSEMBLY (1 REQD). SEE THE DETAIL ON PAGE 8. POSITION AGAINST STACK "A" BEFORE POSITIONING STACK "B".
- ⑧ RETAINER PIECE, 2" X 4" X 72" (2 REQD). POSITION TIGHT AGAINST STACK "B". NAIL FIRST PIECE TO BEARING PIECES OF THE SPACER ASSEMBLY W/2-10d NAILS AT EACH JOINT. NAIL SECOND PIECE TO THE FIRST W/6-10d NAILS.
- ⑨ KNEE BRACE (2 REQD). SEE THE DETAIL ON PAGE 8. POSITION TIGHT AGAINST A STACK OF BOXES. NAIL FLOOR CLEAT TO CONTAINER FLOOR W/6-10d NAILS.
- ⑩ SUPPORT PIECE, 2" X 4" X 24" (3 REQD). POSITION UNDER BASE OF TOWING HITCH. NAIL TO THE CONTAINER FLOOR W/1-10d NAIL AT EACH END.
- ⑪ CHOCK BLOCK (12 REQD). SEE THE CHOCK BLOCK DETAIL ON PAGE 9. LOCATE THE BEVELED END OF BLOCK AGAINST A TIRE AND NAIL TO THE CONTAINER FLOOR W/5-10d NAILS. NOTE: SEE ALTERNATE CHOCK BLOCK DETAIL ON PAGE 9 IF RESTRICTED FLOOR SPACE PREVENTS PROPER INSTALLATION OF THE PREFERRED CHOCK BLOCK.

(CONTINUED AT LEFT)



ELEVATION VIEW

(ONE HOWITZER SHOWN)

SPECIAL NOTES:

1. CAUTION: BEFORE SHIPPING, ALL WHEEL BRAKES MUST BE FULLY SET AND ALL TRAVEL LOCKS MUST BE SECURELY ENGAGED.
2. ANTI-CHAFING MATERIAL SHOULD BE USED BETWEEN STEEL STRAPPING AND POINTS OF CONTACT WITH THE LADING. ENSURE STRAIGHT ALIGNMENT OF STRAPPING AND AVOID CONTACT WITH ANY SHARP EDGES, BRACKETS, OR OTHER APPURTENANCES.
3. IF THE CONTAINER FURNISHED FOR SHIPMENT OF THIS ITEM IS EQUIPPED WITH INTEGRAL TIE DOWN FACILITIES, WEB STRAP TIEDOWN ASSEMBLIES MAY BE USED IN LIEU OF THE STEEL HOLD-DOWN STRAPS AND ANCHOR PLATES, PIECES MARKED ③, ④ AND ⑤ ON PAGE 6. THE WEB STRAP ASSEMBLIES MUST CONFORM TO THE MATERIAL SPECIFICATIONS IDENTIFIED ON PAGE 2 AND THE CONTAINER TIE DOWN FACILITIES MUST BE CAPABLE OF WITHSTANDING A MINIMUM OF 2,000 POUNDS PULLING FORCE WITHOUT DEFORMING. WEB STRAP ASSEMBLIES MUST BE INSTALLED SO WEBBING LAYS FLATLY OVER THE LADING WITHOUT "TWISTS" AND/OR "KNOTS". NOTE: PRIOR TO RATCHETING THE STRAP ASSEMBLIES TIGHT, ENOUGH SLACK LENGTH OF WEBBING MUST REMAIN TO FORM AT LEAST ONE-HALF BUT NOT MORE THAN ONE AND ONE-HALF WRAPS OF WEBBING ON THE RATCHET TAKE-UP SPOOL, AFTER INITIAL WEB-TO-WEB CONTACT HAS BEEN MADE.

BILL OF MATERIAL		
LUMBER	LINEAR FEET	BOARD FEET
2" X 4"	47	32
2" X 6"	59	59
2" X 10"	34	57
4" X 4"	13	17
4" X 6"	9	18
NAILS	NO. REQD	POUNDS
8d (2-1/2")	64	1-1/2
10d (3")	104	1-3/4
12d (3-1/4")	60	1
16d (3-1/2")	108	2-1/2
STEEL STRAPPING, 3/4"	32' REQD	2-1/4 LBS
SEAL FOR 3/4" STRAPPING	4 REQD	NIL
STEEL STRAPPING, 1-1/4"	108' REQD	15-1/2 LBS
SEAL FOR 1-1/4" STRAPPING	10 REQD	1/2 LB
PLYWOOD, 3/4"	15.2 SQ FT REQD	31-1/4 LBS
PLYWOOD, 1/2"	13.4 SQ FT REQD	18-1/2 LBS
STRAP ANCHOR PLATE	6 REQD	1-1/2 LBS
ANCHOR PLATE NAILS	36 REQD	1/4 LB

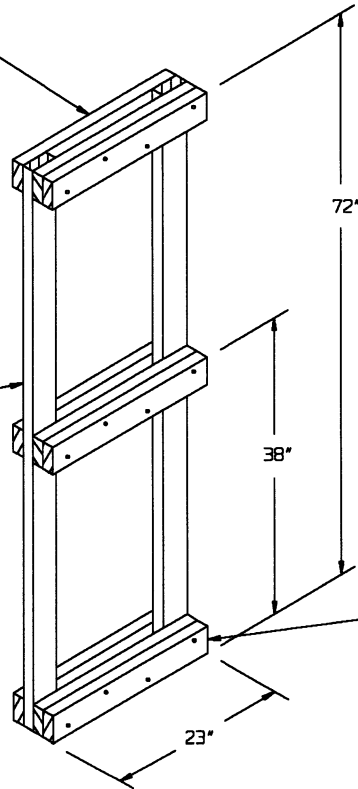
LOAD AS SHOWN

ITEM	QUANTITY	WEIGHT (APPROX)
* M119 HOWITZER	3	13,050 LBS
BOX 1 OF 2	3	714 LBS
BOX 2 OF 2	3	861 LBS
DUNNAGE		443 LBS
CONTAINER		8,800 LBS
TOTAL WEIGHT		23,868 LBS (APPROX)

* INCLUDES WEIGHT OF PACKING BOX AND ITS CONTENTS.

HORIZONTAL PIECE, 2" X 4" X 23"
(6 REQD). NAIL TO THE VERTICAL
PIECE W/2-10d NAILS AT EACH JOINT.

VERTICAL PIECE,
2" X 4" X 72"
(2 REQD).

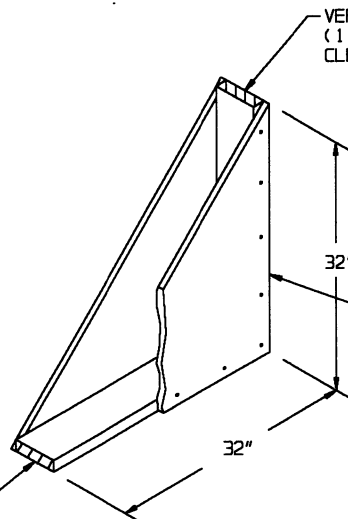


BEARING PIECE, 2" X 4" X 23"
(3 REQD). NAIL TO A HORIZONTAL
PIECE W/4-10d NAILS.

SPACER ASSEMBLY

VERTICAL PIECE, 2" X 6" X 32"
(1 REQD). NAIL TO THE BACK-UP
CLEAT W/2-10d NAILS.

BACK-UP CLEAT,
2" X 6" X 30-1/2"
(1 REQD).



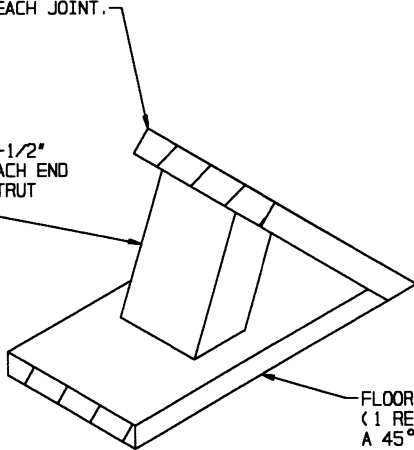
3/4" PLYWOOD, 32" X 32" (2 REQD).
NAIL TO THE VERTICAL PIECE AND
TO THE BACK-UP CLEAT W/5-8d NAILS
EACH.

KNEE BRACE

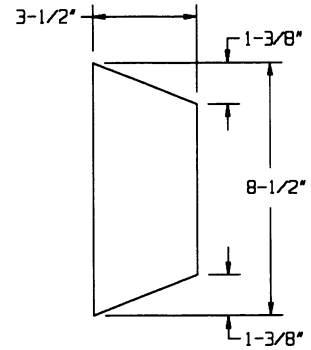
DETAILS

BEARING PIECE, 2" X 10" X 15"
(1 REQD). BEVEL ONE END AT A
45° ANGLE. NAIL TO THE STRUT
AND THE FLOOR CLEAT W/3-16d
NAILS AT EACH JOINT.

STRUT, 4" X 6" X 8-1/2"
(1 REQD). BEVEL EACH END
AS SHOWN BY THE "STRUT
BEVEL DETAIL".



FLOOR CLEAT, 2" X 10" X 19"
(1 REQD). BEVEL ONE END AT
A 45° ANGLE. NAIL TO THE
STRUT W/3-16d NAILS.

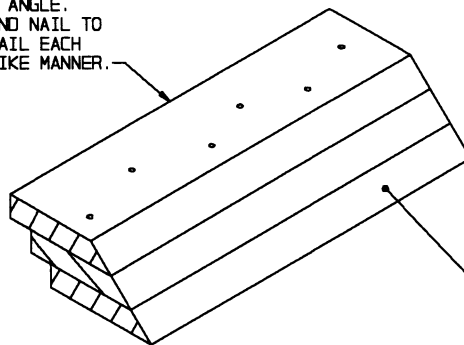


STRUT BEVEL DETAIL

CHOCK BLOCK

NOTE: TWO 4" X 4" X 8-1/2" PIECES MAY
BE SUBSTITUTED FOR EACH 4" X 6" X 8-1/2"
STRUT.

FLOOR CLEAT, 2" X 8" X 24" (3 REQD).
BEVEL ONE EDGE AT A 45° ANGLE.
POSITION AGAINST TIRE AND NAIL TO
FLOOR W/6-10d NAILS. NAIL EACH
ADDITIONAL PIECE IN A LIKE MANNER.



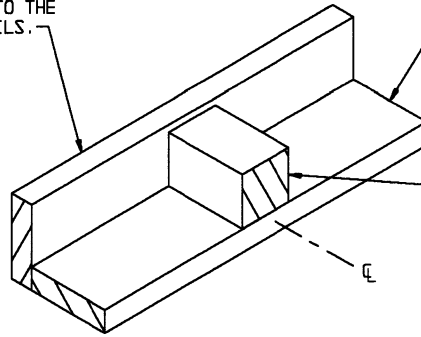
TIRE SIDE OF
ASSEMBLY.

ALTERNATE CHOCK BLOCK

NOTE: THIS ALTERNATE CHOCK BLOCK IS TO
BE USED ONLY WHEN RESTRICTED FLOOR SPACE
PREVENTS PROPER INSTALLATION OF THE
PREFERRED CHOCK BLOCK.

BEARING PIECE, 2" X 6" X 24"
(1 REQD). NAIL TO THE FLOOR
CLEAT W/5-10d NAILS AND TO THE
SUPPORT BLOCK W/2-12d NAILS.

FLOOR CLEAT, 2" X 6" X 24"
(1 REQD). NAIL TO THE SUPPORT
BLOCK W/3-12d NAILS.

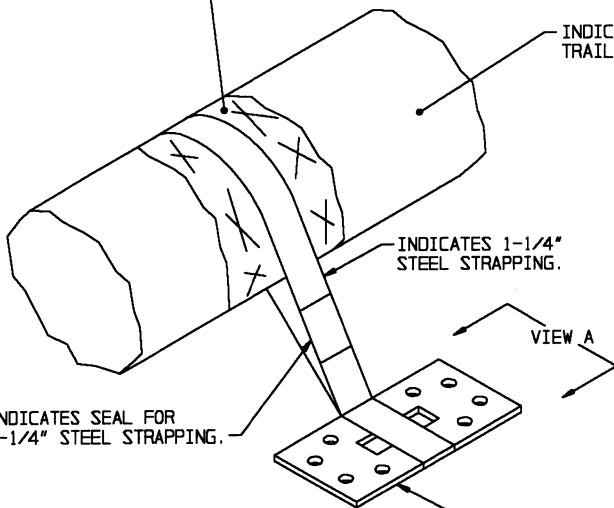


SUPPORT BLOCK,
4" X 4" X 5-1/2".
(1 REQD).

SIDE BLOCKING

INDICATES
ANTI-CHAFING
MATERIAL.

INDICATES PORTION OF TUBULAR
TRAIL ARM OF HOWITZER.

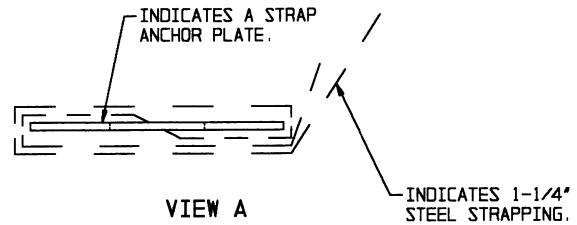


INDICATES 1-1/4"
STEEL STRAPPING.

INDICATES SEAL FOR
1-1/4" STEEL STRAPPING.

INDICATES A STRAP
ANCHOR PLATE.

ISOMETRIC VIEW



VIEW A

THIS VIEW SHOWS THE CORRECT WAY TO THREAD THE
STEEL STRAP THROUGH THE SLOT IN THE STRAP
ANCHOR PLATE. NOTE THAT THE STRAP WITH ANCHOR
PLATE IS BENT OVER ONTO ITSELF PRIOR TO NAILING TO FLOOR.

APPLICATION OF STRAPPING TO STRAP ANCHOR PLATE

DETAILS