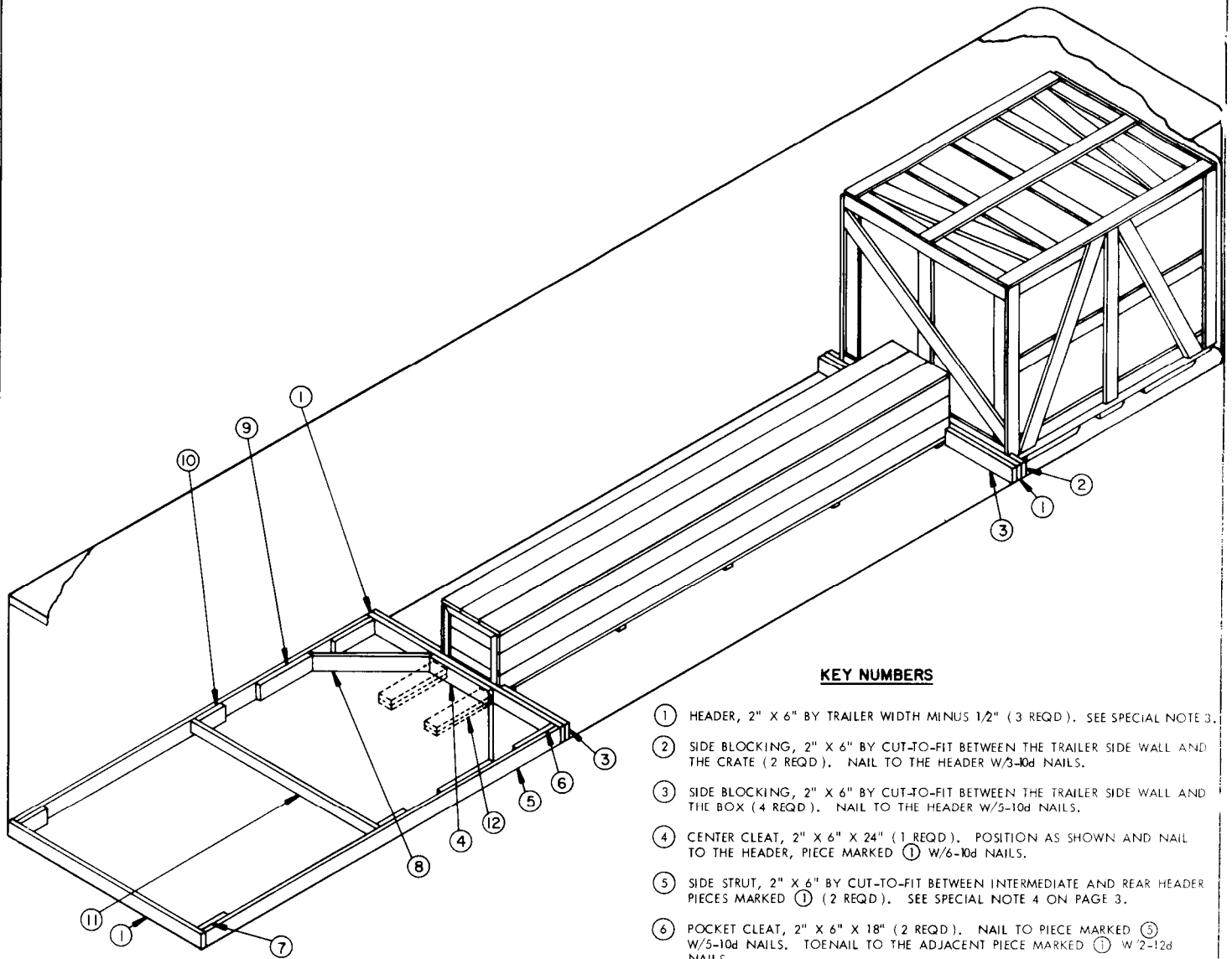


# LANCE

## LOADING AND BRACING IN CLOSED OR OPEN TOP VAN TRAILER OF HANDLING UNIT, GUIDED MISSILE, XM39E1

REVISIONS				DRAFTSMAN	PROJ ENG	ANCPM - LCSP
				<i>Wesley E. Gilleland</i>	<i>MWD/klw</i>	<i>GM</i>
				CHECKER	LOG ENGINE OFFICER	AMEMI - SP
				<i>RSH</i>	<i>John Byrd</i>	<i>11</i>
				APPROVED		
				<i>Wesley E. Gilleland</i>		
				U. S. ARMY MISSILE COMMAND		
				APPROVED BY ORDER OF COMMANDING GENERAL		
				U. S. ARMY MATERIEL COMMAND		
				<i>John L. Byrd</i>		
				USAMC AMMO CENTER		
				U. S. ARMY MATERIEL COMMAND		
				OCTOBER 1972		
				CLASS	DIVISION	DRAWING
				19	48	7577
						FILE
						GSE II LC 9

DO NOT SCALE



**ISOMETRIC VIEW**

**KEY NUMBERS**

- ① HEADER, 2" X 6" BY TRAILER WIDTH MINUS 1/2" (3 REQD). SEE SPECIAL NOTE 3.
- ② SIDE BLOCKING, 2" X 6" BY CUT-TO-FIT BETWEEN THE TRAILER SIDE WALL AND THE CRATE (2 REQD). NAIL TO THE HEADER W/3-10d NAILS.
- ③ SIDE BLOCKING, 2" X 6" BY CUT-TO-FIT BETWEEN THE TRAILER SIDE WALL AND THE BOX (4 REQD). NAIL TO THE HEADER W/5-10d NAILS.
- ④ CENTER CLEAT, 2" X 6" X 24" (1 REQD). POSITION AS SHOWN AND NAIL TO THE HEADER, PIECE MARKED ① W/6-10d NAILS.
- ⑤ SIDE STRUT, 2" X 6" BY CUT-TO-FIT BETWEEN INTERMEDIATE AND REAR HEADER PIECES MARKED ① (2 REQD). SEE SPECIAL NOTE 4 ON PAGE 3.
- ⑥ POCKET CLEAT, 2" X 6" X 18" (2 REQD). NAIL TO PIECE MARKED ③ W/5-10d NAILS. TOENAIL TO THE ADJACENT PIECE MARKED ① W/2-12d NAILS.
- ⑦ STRUT RETAINING BLOCK, 2" X 6" X 12" (2 REQD). NAIL TO PIECE MARKED ⑤ W/3-10d NAILS. TOENAIL TO THE REAR PIECE MARKED ① W/2-12d NAILS.
- ⑧ DIAGONAL BRACE, 2" X 6" BY CUT-TO-FIT (2 REQD). DOUBLE BEVEL EACH END WITH 45° CUTS. INSTALL AT A 45° ANGLE AS SHOWN AND TOENAIL TO THE ADJACENT PIECE MARKED ① AND TO THE PIECE MARKED ⑤ W/2-12d NAILS AT EACH END.
- ⑨ SIDE CLEAT, 2" X 6" X 24" (2 REQD). NAIL TO PIECE MARKED ⑤ W/8-10d NAILS.
- ⑩ STRUT BRACING SUPPORT PIECE, 2" X 6" X 12" (2 REQD). NAIL TO PIECE MARKED ⑤ W/3-10d NAILS. SEE SPECIAL NOTE 5 ON PAGE 3.
- ⑪ STRUT BRACING, 2" X 4" BY CUT-TO-FIT (1 REQD). NAIL TO PIECE MARKED ⑩ W/2-12d NAILS AT EACH END.
- ⑫ BACK-UP CLEAT, 2" X 6" X 24" (DOUBLED) (2 REQD). ALIGN WITH CONTAINER AND NAIL THE FIRST PIECE TO THE TRAILER FLOOR W/5-12d NAILS. NAIL THE SECOND PIECE TO THE FIRST PIECE IN A LIKE MANNER AND TOENAIL TO THE ADJACENT HEADER PIECE MARKED ① W/2-12d NAILS. SEE SPECIAL NOTE 2.

**SPECIAL NOTES:**

1. A 1-UNIT (2 PACKAGE) LOAD IS SHOWN. THESE OUTLOADING PROCEDURES DEPICT THE USE OF BOTH "K-BRACE" TYPE BLOCKING AND "NAILED-FLOOR-LINE" BLOCKING IN A 7'-6" WIDE (INSIDE DIMENSION) VAN TRAILER.
2. PIECES MARKED ② ARE FOR USE IN A TRAILER WHICH HAS A NAILABLE FLOOR AND MAY BE USED IN LIEU OF ONE HEADER PIECE MARKED ① AT THE REAR OF THE TRAILER AND PIECES MARKED ④ THRU ① WHICH APPLY TO TRAILERS HAVING NON-NAILABLE FLOORS.
3. IF A SQUARE-FRONT TRAILER IS OFFERED FOR SHIPMENT OF THE DESIGNATED ITEM, AN ADDITIONAL HEADER, PIECE MARKED ①, AND TWO (2) ADDITIONAL SIDE BLOCKING PIECES MARKED ② MUST BE USED AT THE FRONT WALL OF THE TRAILER.
4. IF DESIRED, EACH SIDE STRUT PIECE MARKED ⑤ MAY BE CUT FROM TWO (2) LENGTHS OF MATERIAL, BUTTED TOGETHER AND SPLICED WITH A 2" X 6" X 24" SPLICE PIECE, CENTERED ON THE JOINT AND NAILED W/4-10d NAILS AT EACH END.
5. THE STRUT BRACE SUPPORT PIECES MARKED ⑩ MUST BE POSITIONED SO THAT THE STRUT BRACING PIECE MARKED ⑪ WILL BE CENTERED BETWEEN THE INTERMEDIATE AND REAR HEADER PIECES MARKED ①.

**GENERAL NOTES**

- A. THIS DOCUMENT HAS BEEN PREPARED AND ISSUED IN ACCORDANCE WITH AMCR 740-13.
- B. THE OUTLOADING PROCEDURES SPECIFIED HEREIN ARE APPLICABLE TO THE BASE ASSEMBLY AND BOOM ASSEMBLY OF THE HANDLING UNIT, GUIDED MISSILE, XM39E1 WHEN PACKED IN THE WOODEN CRATE AND WOODEN BOX RESPECTIVELY.
- C. LADING DATA:  
 BASE ASSEMBLY (CRATED) --- 8'-1" LONG X 6'-4" WIDE X 6'-1" HIGH.  
 GROSS WEIGHT----- 1,298 POUNDS (APPROX).  
 BOOM ASSEMBLY (BOXED) --- 17'-3" LONG X 26" WIDE X 22" HIGH.  
 GROSS WEIGHT----- 843 POUNDS (APPROX).
- D. THE LOAD AS SHOWN IS BASED ON A 40'-0" LONG BY 7'-6" WIDE (INSIDE DIMENSION) CLOSED OR OPEN TOP VAN TRAILER WHICH HAS A WOOD, OR A WOOD AND METAL, OR A METAL FLOOR. THE DELINEATED OUTLOADING PROCEDURES ARE ALSO APPLICABLE TO TRAILERS WHICH ARE EIGHTY-NINE INCHES (89") THROUGH NINETY-THREE INCHES (93") IN WIDTH.
- E. THE GROSS WEIGHT AND AXLE DISTRIBUTION OF WEIGHT FOR A LOAD WILL BE THE RESPONSIBILITY OF THE CARRIER. THE CARRIER WILL ADVISE THE SHIPPER OF THE APPLICABLE LOADING REQUIREMENTS, AND THE SHIPPER WILL LOAD ACCORDINGLY.
- F. THE NUMBER OF LADING UNITS MAY BE ADJUSTED TO FIT THE SIZE OF THE TRAILER TO BE LOADED OR THE QUANTITY TO BE SHIPPED; HOWEVER THE APPROVED METHODS SHOWN HEREIN MUST BE FOLLOWED AS CLOSELY AS POSSIBLE FOR BLOCKING, BRACING, AND STAYING OF THE DESIGNATED ITEMS.
- G. OTHER TYPES OF LADING ITEMS MAY BE LOADED INTO TRAILERS WHICH ARE PARTIALLY LOADED WITH THE DEPICTED ITEM, PROVIDING THE TOTAL LOAD IS COMPATIBLE, EXISTING DIRECTIVES ARE NOT VIOLATED, AND THE OTHER LADING ITEMS ARE BLOCKED AND BRACED TO EQUAL THE BLOCKING AND BRACING CRITERIA SPECIFIED HEREIN.
- H. DUNNAGE LUMBER SPECIFIED THROUGHOUT THIS PROCEDURAL DRAWING IS OF NOMINAL SIZE. FOR EXAMPLE, 2" X 6" MATERIAL IS ACTUALLY 1-1/2" THICK BY 5-1/2" WIDE OR 1-5/8" THICK BY 5-5/8" WIDE.
- J. **NOTICE:** A STAGGERED NAILING PATTERN WILL BE USED WHEREVER POSSIBLE WHEN NAILS ARE DRIVEN INTO JOINTS OF DUNNAGE ASSEMBLIES. ALSO, A STAGGERED NAILING PATTERN WILL BE USED WHEN DUNNAGE IS NAILED TO THE FLOOR OF THE TRANSPORTING VEHICLE, OR WHEN LAMINATING DUNNAGE. ADDITIONALLY, THE NAILING PATTERN FOR AN UPPER PIECE OF LAMINATED DUNNAGE WILL BE ADJUSTED AS REQUIRED SO THAT A NAIL FOR THAT PIECE WILL NOT BE DRIVEN THROUGH ONTO OR RIGHT BESIDE A NAIL IN A LOWER PIECE.
- K. PORTIONS OF THE TRAILER BODY DEPICTED WITHIN THIS PROCEDURAL DRAWING, SUCH AS ONE OF THE SIDE WALLS, HAVE BEEN OMITTED FROM THE LOAD VIEWS FOR CLARITY PURPOSES.
- L. FOR ADDITIONAL GUIDANCE, ATTENTION IS DIRECTED TO THE "SPECIAL NOTES" AT THE LEFT.

BILL OF MATERIAL		
LUMBER	LINEAR FEET	BOARD FEET
2" X 4"	8	6
2" X 6"	84	84
NAILS	NO. REQD	POUNDS
10d (3")	70	1-1/4
12d (3-1/4")	20	1/2

**MATERIAL SPECIFICATIONS**

- LUMBER** -----: DOUGLAS FIR OR COMPARABLE LUMBER WITH STRAIGHT GRAIN AND FREE OF MATERIAL DEFECTS. REF: FED SPEC MM-L-751.
- NAILS** -----: COMMON, CEMENT-COATED OR CHEMICALLY ETCHED, REF: FED SPEC FF-N-105.  
 ALT: ANNULAR-RING TYPE NAIL OF SAME SIZE.

**LOAD AS SHOWN**

ITEM	QUANTITY	WEIGHT ( APPROX )
HANDLING UNIT ( IN 2 PACKAGES )	----- 1 -----	----- 2,41 LBS
DUNNAGE	-----	----- 227 LBS
TOTAL WEIGHT -----		----- 2,368 LBS