

# CHAPARRAL

## LOADING AND BRACING ON FLAT BED OR "LOW-BOY" TRAILER OF GUIDED MISSILE SYSTEM, INTERCEPT AERIAL, M54 AND M54AI

### INDEX

<u>ITEM</u>	<u>PAGE(S)</u>
GENERAL NOTES, AND MATERIAL SPECIFICATIONS -----	2
DETAILS -----	3
UNCRATED - MOUNTED ON ALUMINUM BLOCKS -----	4,5
UNCRATED - MOUNTED ON SKID BASE -----	6,7
CRATED -----	8,9

THIS DRAWING, INCLUDING REVISION 1, SUPERSEDES  
DRAWING 19-48-7566-GSE 11CH4, DATED 30 JANUARY 1970.

REVISIONS				DRAFTSMAN	PROJ. ENG.	DRSRI-SP
1	SEP 79	<i>[Signature]</i>	<i>[Signature]</i>	<i>P.A. / [Signature]</i>	<i>MWD / [Signature]</i>	<i>[Signature]</i>
				CHECKER	LSP ENGINE OFFICE	
				APPROVED, U.S. ARMY MISSILE COMMAND		
				<i>William J. Goguen</i>		
				APPROVED BY ORDER OF COMMANDING GENERAL, U.S. ARMY MATERIEL DEVELOPMENT AND READINESS COMMAND (DARCOM)		
				<i>John T. Boyd Jr.</i>		
				U.S. ARMY DEFENSE AMMUNITION CENTER AND SCHOOL		
				U.S. ARMY DARCOM DRAWING		
				SEPTEMBER 1979		
				CLASS	DIVISION	DRAWING
				19	48	7566
						GSE 11CH4

**DO NOT SCALE**

**GENERAL NOTES**

- A. THIS DOCUMENT HAS BEEN PREPARED AND ISSUED IN ACCORDANCE WITH AR 740-1.
- B. THE LOAD AS SHOWN IS BASED ON A FLAT BED OR "LOW-BOY" TRAILER, 8'-0" WIDE WITH A WOOD OR A WOOD AND METAL FLOOR. TRAILERS WITH ALL METAL FLOORS WILL NOT BE USED. ONLY ONE (1) UNIT OF LADING IS SHOWN; HOWEVER, MULTIPLES OF UNITS, AS SHOWN OR DISSIMILAR IN NATURE, MAY BE LOADED ON A TRAILER. THE NUMBER OF UNITS TO BE LOADED ON A TRAILER WILL BE DEPENDENT ON THE SIZE OF THE TRAILER USED OR THE QUANTITIES OF UNITS TO BE SHIPPED WITH THE VIEW OF FULL UTILIZATION OF CARRIER EQUIPMENT. CAUTION: THE LOADS AS SHOWN MAY REQUIRE "CLEARANCE" CONSIDERATION BECAUSE OF EXCESSIVE LADING SIZE.
- C. ONLY TRAILERS CAPABLE OF SAFELY TRANSPORTING THE LADING TO DESTINATION WITHOUT DAMAGE WILL BE SELECTED. TRAILERS SELECTED MUST HAVE "SOUND" FLOORS WHICH PROVIDE NAIL RETENTION PROPERTIES EQUAL TO OR BETTER THAN SPECIFIED DUNNAGE LUMBER, AND A SUFFICIENT NUMBER OF ANCHORING FACILITIES OF A STRENGTH EQUAL TO OR BETTER THAN SPECIFIED LADING TIEDOWN ASSEMBLIES. (SEE SPECIAL PROVISIONS OF GENERAL NOTE "G" BELOW).
- D. SHIPMENT GROSS WEIGHT, AXLE DISTRIBUTION OF LADING WEIGHT, AND OVERALL DIMENSIONS MUST MEET STATE LAW REQUIREMENTS.
- E. LADING DATA (UNCRATED-MOUNTED ON ALUMINUM BLOCKS):  
ITEM DIMENSIONS----10'-8-1/2" LONG BY 7'-10-3/8" WIDE BY 7'-3-3/4" HIGH.  
ITEM GROSS WEIGHT-- 9,720 POUNDS (APPROX).  
  
LADING DATA (UNCRATED-MOUNTED ON SKID BASE):  
ITEM DIMENSIONS----11'-10-3/4" LONG BY 8'-8" WIDE BY 7'-11-1/4" HIGH.  
ITEM GROSS WEIGHT---10,924 POUNDS (APPROX).  
  
LADING DATA (CRATED):  
ITEM DIMENSIONS----11'-11-3/4" LONG BY 8'-9" WIDE BY 8'-6-7/8" HIGH.  
ITEM GROSS WEIGHT--12,270 POUNDS (APPROX).
- F. WHEN STEEL STRAPPING IS SEALED AT AN END-OVER-END LAP JOINT, A MINIMUM OF TWO (2) SEALS, BUTTED TOGETHER, WITH TWO (2) PAIR OF CRIMPS PER SEAL MUST BE USED TO SEAL THE JOINT.
- G. IF THE STAKE POCKETS AND/OR ANCHOR DEVICES ON A TRAILER ARE NOT PROPERLY LOCATED TO PERMIT SECURING OF THE TWO INCH (2") STEEL STRAPPING AS SHOWN, OR IF THE POCKETS AND/OR ANCHOR DEVICES ARE NOT EQUAL TO OR GREATER THAN THE STRENGTH OF THE 2" TIEDOWN STRAPS, STRAPPING MAY BE APPLIED TO FORM A COMPLETE LOOP WHICH ENCOMPASSES BOTH THE LADING AND THE TRAILER FRAME AND/OR BED. CAUTION: WHEN INSTALLING A TIEDOWN STRAP WHICH ENCOMPASSES BOTH LADING AND TRAILER FRAME AND/OR BED, AVOID TRAILER WHEELS, FIFTH WHEEL PLATE, CONTROLS, AND APPURTENANCES; AND USE PADS ON ALL SHARP EDGES AS CUSHIONING FOR THE STRAPPING. NOTE: PROVISIONS OF GENERAL NOTE "F" ABOVE WILL ALSO APPLY.
- H. REFER TO ORD DWG 19-48-C-ORDJU-588, "WIRE ROPE AND ANNEALED WIRE APPLICATION METHODS FOR SECURING LADING ON RAIL & MOTOR CARRIER EQUIP", FOR PROPER TIE DOWN APPLICATION, EXCEPT NUTS ON CABLE CLIPS WILL BE TIGHTENED TO A TORQUE OF 35 TO 40 FOOT POUNDS.
- J. WIRE ROPE CABLE TENSIONING CAN BE ACCOMPLISHED BY EMPLOYING TWO (2) CABLE "GRIPPERS" AND AN APPLICABLY SIZED "COME-A-LONG" TYPE MECHANICAL HOIST.
- K. SEE THE "SPECIAL PROVISIONS" ON PAGES 5 AND 9 FOR SPECIFICATIONS WHICH MUST BE APPLIED IF CHAINS AND LOAD BINDERS ARE USED IN LIEU OF THE SPECIFIED HOLD-DOWNS.
- L. DUNNAGE LUMBER SPECIFIED THROUGHOUT THIS PROCEDURAL DRAWING IS OF NOMINAL SIZE. FOR EXAMPLE, 2" X 6" MATERIAL IS ACTUALLY 1-1/2" THICK BY 5-1/2" WIDE AND 6" X 6" MATERIAL IS ACTUALLY 5-1/2" THICK BY 5-1/2" WIDE.
- M. NOTICE: A STAGGERED NAILING PATTERN WILL BE USED WHEN DUNNAGE IS NAILED TO THE FLOOR OF THE TRANSPORTING VEHICLE, OR WHEN LAMINATING DUNNAGE. ADDITIONALLY, THE NAILING PATTERN FOR AN UPPER PIECE OF LAMINATED DUNNAGE WILL BE ADJUSTED AS REQUIRED SO THAT A NAIL FOR THAT PIECE WILL NOT BE DRIVEN THROUGH ONTO OR RIGHT BESIDE A NAIL IN A LOWER PIECE. SEE "APPLICATION OF STAGGERED NAILING PATTERN" ON PAGE 4.

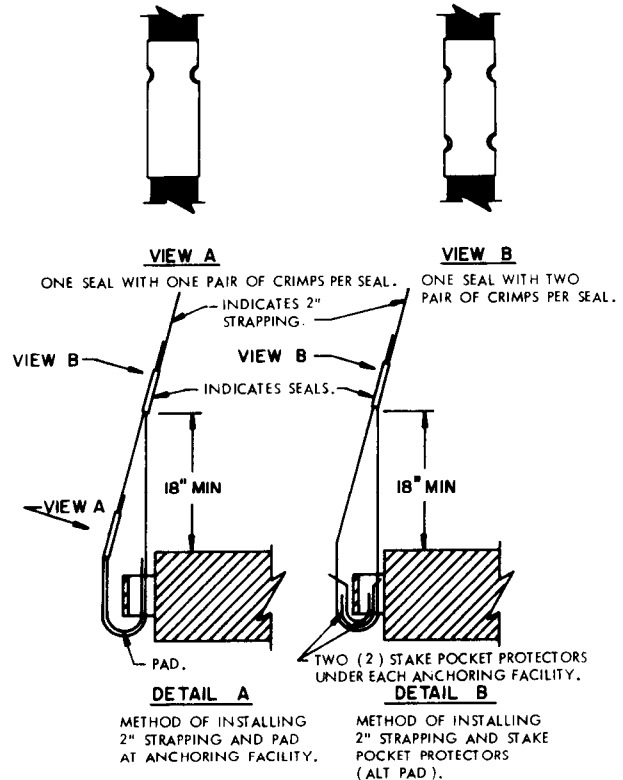
**REVISION**

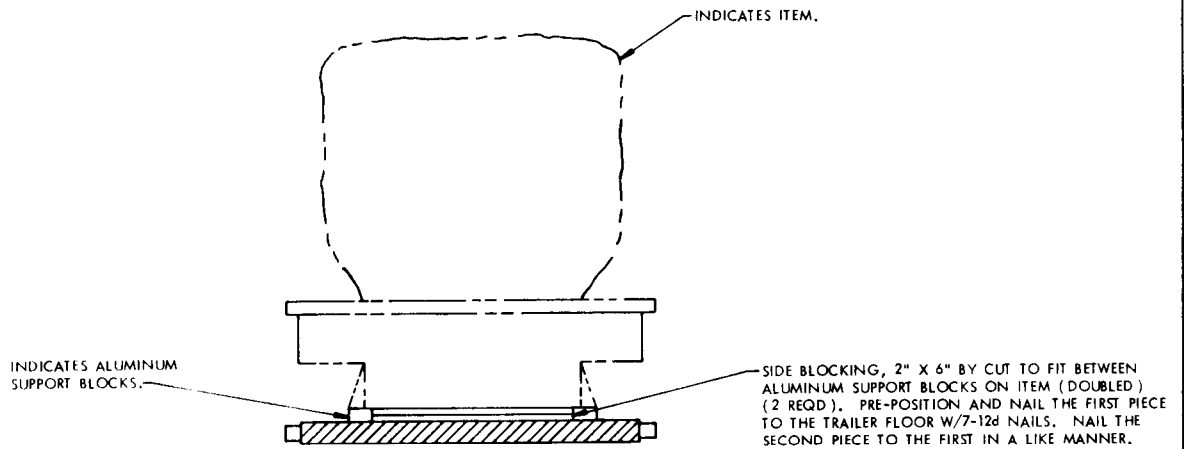
REVISION NO. 1, DATED SEPTEMBER 1979, CONSISTS OF:

1. DELETING X FROM XMS4.
2. ADDING M54A1 TO THE TITLE.
3. ADDING PROCEDURE FOR SHIPPING "CRATED" AND "UNCRATED-MOUNTED ON SKID BASE".
4. ADDING "SPECIAL PROVISIONS" FOR USE OF CHAINS AND LOAD BINDERS.
5. CHANGING PROCEDURES TO CONFORM TO CURRENT STANDARDS.

**MATERIAL SPECIFICATIONS**

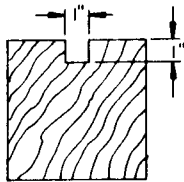
- LUMBER -----: DOUGLAS FIR OR COMPARABLE LUMBER WITH STRAIGHT GRAIN AND FREE OF MATERIAL DEFECTS. REF: FED SPEC MM-L-751.
- NAILS -----: COMMON. REF: FED SPEC FF-N-105.
- ROPE -----: STEEL WIRE, PLAIN, PREFORMED, REGULAR LAY, 6.56 TONS, 6 X 19, FLEXIBLE IWRC, MACWHYTE WIRE ROPE CO (OR EQUAL). REF: FED SPEC RR-W-410.
- CLIPS -----: "U" BOLT, CROSBY, HEAVY DUTY (OR EQUAL). REF: FED SPEC FF-C-450, TYPE I, CLASS 1.
- STRAPPING, STEEL ---: CLASS I, TYPE I, HEAVY DUTY, FINISH A, B (GRADE 2), OR C. REF: FED SPEC QQ-S-781.
- STRAP SEAL -----: TYPE D, STYLE I, II, OR IV, CLASS H. REF: FED SPEC QQ-S-781.
- STRAP STAPLE, STAKE POCKET PROTECTOR---: COMMERCIAL GRADE.





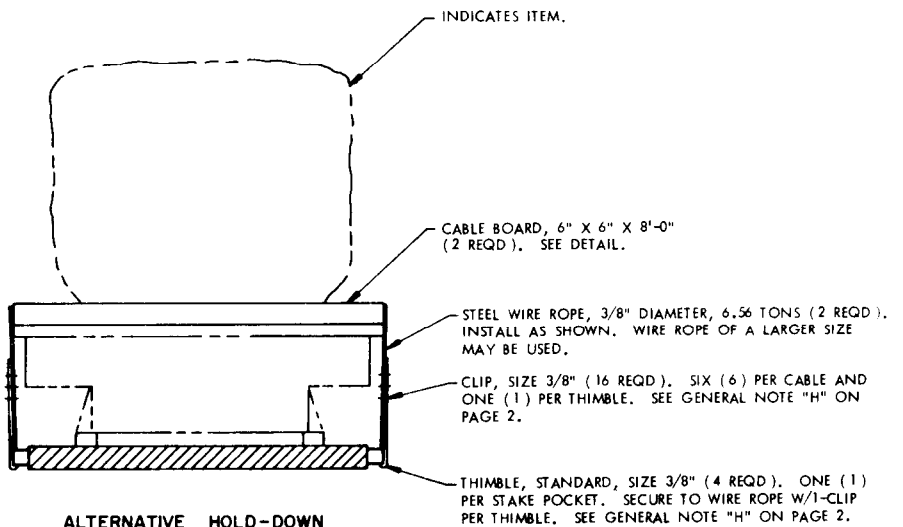
**ALTERNATIVE SIDE BLOCKING**

MAY BE USED IN LIEU OF PIECES MARKED ② ON PAGES 4 AND 5.



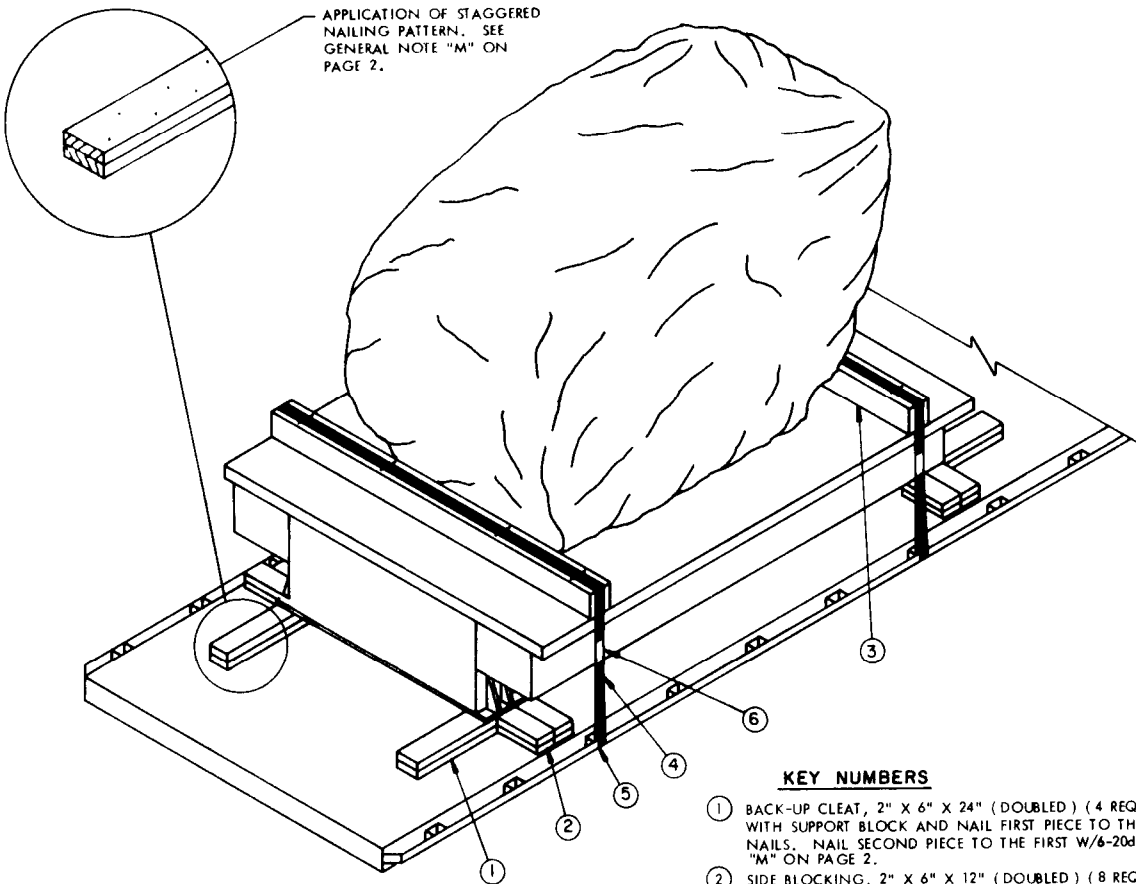
**CABLE BOARD**

6" X 6" MATERIAL. NOTCH AS SHOWN TO RETAIN CABLE.



**ALTERNATIVE HOLD-DOWN**

MAY BE USED IN LIEU OF PIECES MARKED ③, ④, ⑤ AND ⑥ ON PAGES 4 AND 5, AND PIECES MARKED ⑦, ⑧ AND ⑨ ON PAGES 6 AND 7.

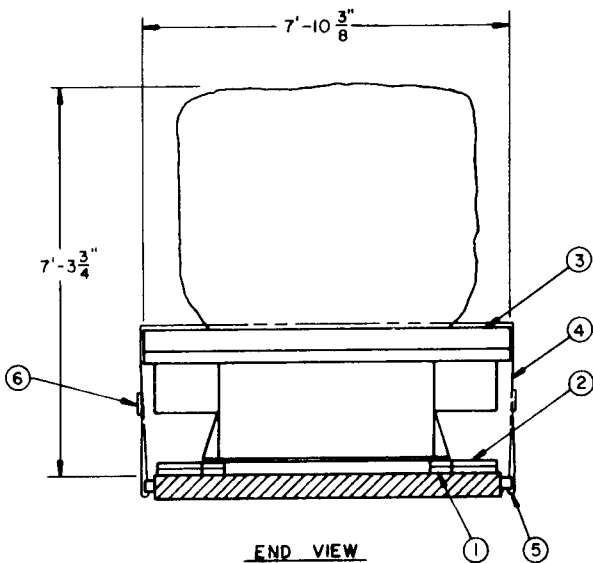


APPLICATION OF STAGGERED NAILING PATTERN. SEE GENERAL NOTE "M" ON PAGE 2.

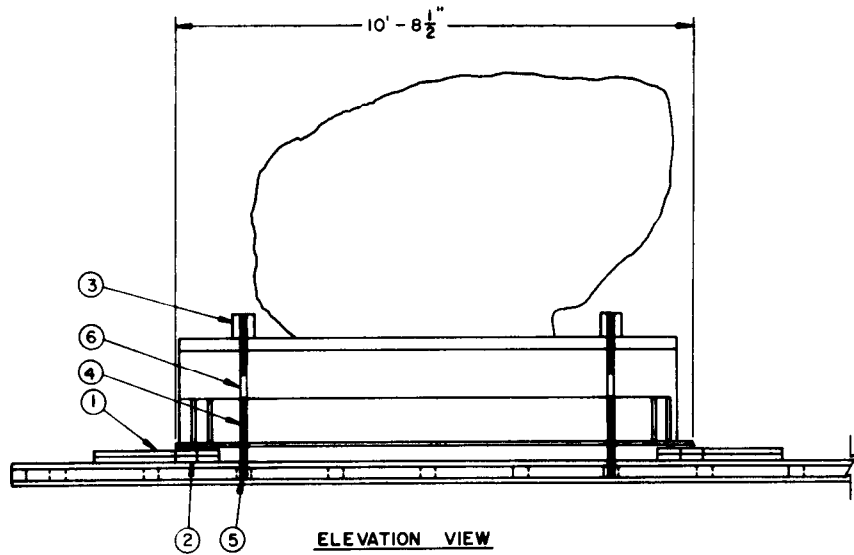
ISOMETRIC VIEW

**KEY NUMBERS**

- ① BACK-UP CLEAT, 2" X 6" X 24" (DOUBLED) (4 REQD). POSITION IN LINE WITH SUPPORT BLOCK AND NAIL FIRST PIECE TO THE TRAILER FLOOR W/6-12d NAILS. NAIL SECOND PIECE TO THE FIRST W/6-20d NAILS. SEE GENERAL NOTE "M" ON PAGE 2.
- ② SIDE BLOCKING, 2" X 6" X 12" (DOUBLED) (8 REQD). CENTER JOINT ON SUPPORT BLOCK AND NAIL FIRST PIECE TO THE TRAILER FLOOR W/3-12d NAILS. NAIL SECOND PIECE TO THE FIRST IN A LIKE MANNER. SEE SPECIAL NOTE 2 ON PAGE 5.
- ③ STRAPPING BOARD, 6" X 6" X 8'-0" (2 REQD).
- ④ HOLD-DOWN STRAP, 2" X .050" X 24'-0" STEEL STRAPPING (2 REQD). INSTALL EACH STRAP FROM ONE (1) PIECE OF STRAPPING; ANCHOR IT TO THE ANCHORING FACILITY ON ONE SIDE OF THE TRAILER, RUN IT OVER PIECE MARKED ③, PASS IT THROUGH THE ANCHORING FACILITY ON THE OPPOSITE SIDE OF THE TRAILER, AND BRING IT BACK UP ABOVE THE TRAILER FLOOR WHERE IT CAN BE TENSIONED AND SEALED. SEE SPECIAL NOTE 1 AND SPECIAL PROVISIONS ON PAGE 5 AND GENERAL NOTE "G" ON PAGE 2.
- ⑤ PAD, 2" X .050" STEEL STRAPPING 18" LONG (4 REQD). POSITION UNDER ANCHORING FACILITY AND SEAL TO HOLD-DOWN STRAP. SEE "DETAIL A" ON PAGE 2. ALT: STAKE POCKET PROTECTOR (8 REQD). USE TWO (2) UNDER EACH ANCHORING FACILITY WITH A HOLD-DOWN STRAP. SEE "DETAIL B" ON PAGE 2.
- ⑥ SEAL FOR 2" STRAPPING (8 REQD, 4 PER STRAP). DOUBLE CRIMP EACH SEAL EXCEPT THOSE USED TO SECURE THE PADS.



END VIEW



**ELEVATION VIEW**

**SPECIAL NOTES:**

1. 3/8" CABLE ( OR LARGER ) MAY BE USED IN LIEU OF 2" STRAPPING SHOWN AS PIECE MARKED ④ ON PAGE 4 OR PIECE MARKED ⑥ ON PAGE 6. SEE GENERAL NOTES "H" AND "J" ON PAGE 2. SEE "ALTERNATIVE HOLD-DOWN" DETAIL ON PAGE 3.
2. PRE-POSITIONED SIDE BLOCKING MAY BE USED IN LIEU OF PIECES MARKED ②. SEE "ALTERNATIVE SIDE BLOCKING" DETAIL ON PAGE 3.
3. ITEM MUST BE LOCATED ON TRAILER RELATIVE TO LOCATION OF STAKE POCKETS SO THAT WHEN PIECES MARKED ③ THROUGH ⑥ ON PAGE 4 AND PIECES MARKED ⑦ THROUGH ⑧ ON PAGES 6 AND 8 ARE APPLIED THEY WILL BE IN THE SAME GENERAL LOCATION RELATIVE TO THE ITEM AS SHOWN.

BILL OF MATERIAL		
LUMBER	LINEAR FEET	BOARD FEET
2" X 6"	32	32
6" X 6"	16	48
NAILS	NO. REQD	POUNDS
12d ( 3-1/4" )	72	1-1/4
20d ( 4" )	24	1
STEEL STRAPPING, 2" X .050"	54 REQD	18 LBS
SEAL FOR 2" STRAPPING	8 REQD	2 LBS
STAPLE FOR 2" STRAPPING	8 REQD	NIL

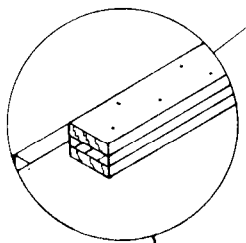
**SPECIAL PROVISIONS FOR INTERCEPT AERIAL ( ON ALUMINUM BLOCKS AND SKID BASE )**

LADING MAY BE SECURED BY CARRIER-OWNED CHAINS AND LOAD BINDERS IN LIEU OF SPECIFIED HOLD-DOWN STRAPPING DUNNAGE MATERIALS, PROVIDING THE FOLLOWING CONDITIONS ARE MET:

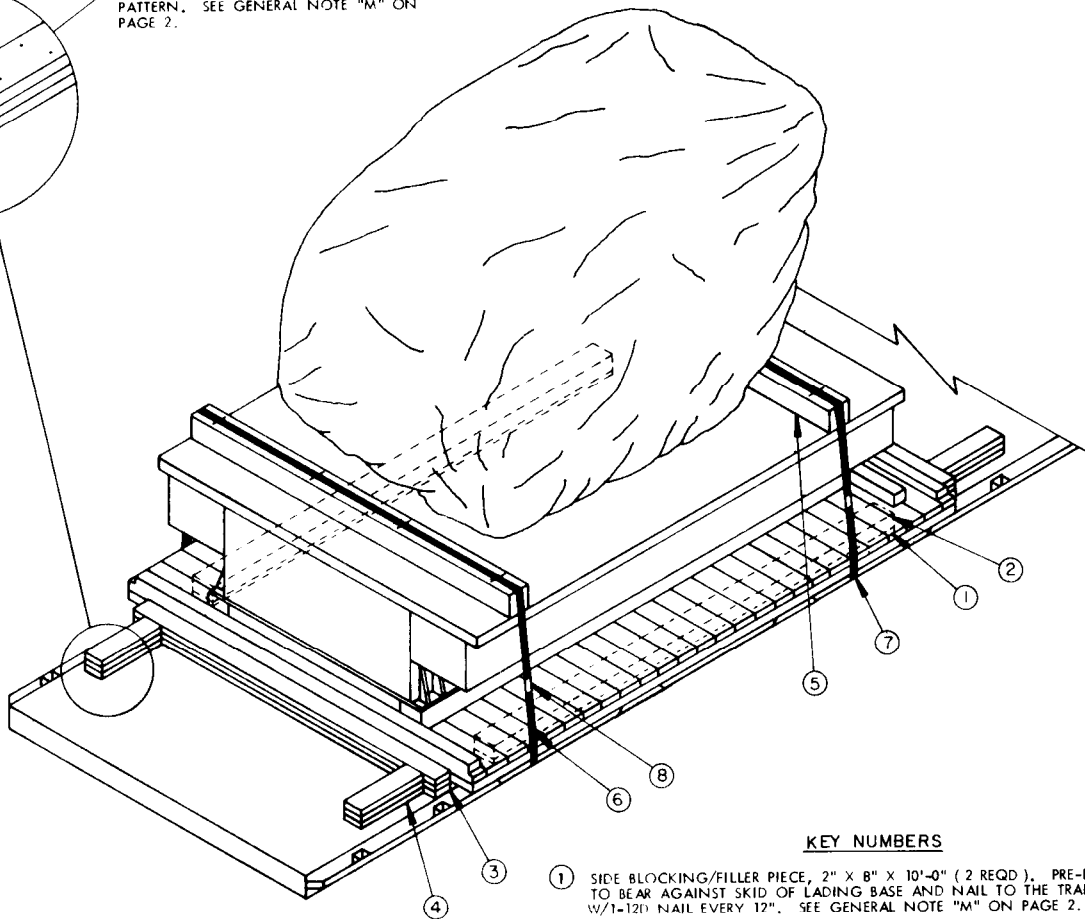
1. ONLY CHAINS AND LOAD BINDERS OF GOOD QUALITY SHOULD BE USED. CAUTION: EXTREME CARE MUST BE USED IN TENSIONING CHAINS TO PREVENT DAMAGE TO THE LADING.
2. IN LIEU OF EACH HOLD-DOWN STRAP MARKED ④ ON PAGE 4, AND ⑥ ON PAGE 6, ONE ( 1 ) LINE OF 1/4" CHAIN MAY BE USED. EACH CHAIN SHALL BE SECURED TO PIECE MARKED ③ ON PAGE 4 AND PIECE MARKED ⑤ ON PAGE 6 W/4-20d NAILS BY DRIVING EACH NAIL INTO THE BOARD THRU AN OPENING IN A CHAIN LINK AND BENDING IT OVER THE LINK.
3. IF DESIRED, CHAINS OF A LARGER SIZE THAN SPECIFIED ABOVE MAY BE USED.
4. BEFORE AND DURING INSTALLATION, THE CHAINS AND LOAD BINDERS SHALL BE INSPECTED FOR BENT HOOKS, STRETCH, GOUGES, BENT LINKS, WEAR, AND ANY OTHER NOTICEABLE DEFECTS. ANY DEFICIENCY SHALL BE CAUSE FOR REJECTION OF A CHAIN OR LOAD BINDER. CHAINS MUST NOT BE TWISTED DURING INSTALLATION.
5. THE TENSIONING DEVICE OF EACH LOAD BINDER MUST BE SAFETY-WIRE TIED TO PREVENT ACCIDENTAL OPENING OR LOOSENING IN TRANSIT.

**LOAD AS SHOWN**

ITEM	QUANTITY	WEIGHT ( APPROX )
INTERCEPT AERIAL ON ALUMINUM BLOCKS	-----	9,720 LBS
DUNNAGE	-----	182 LBS
TOTAL WEIGHT		----- 9,902 LBS



APPLICATION OF STAGGERED NAILING PATTERN. SEE GENERAL NOTE "M" ON PAGE 2.

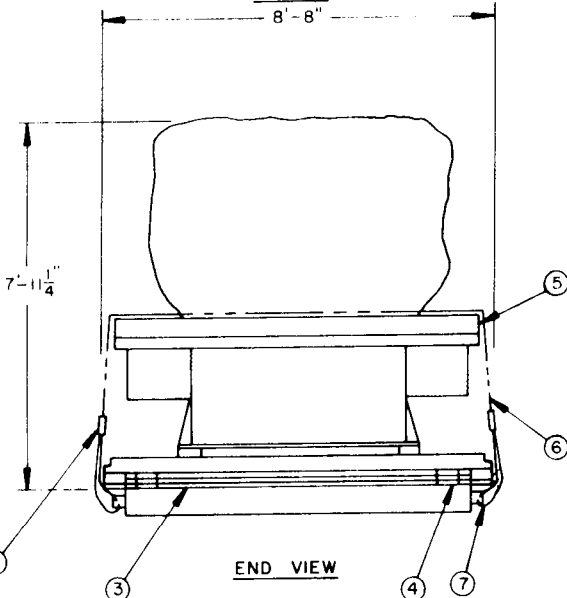


ISOMETRIC VIEW

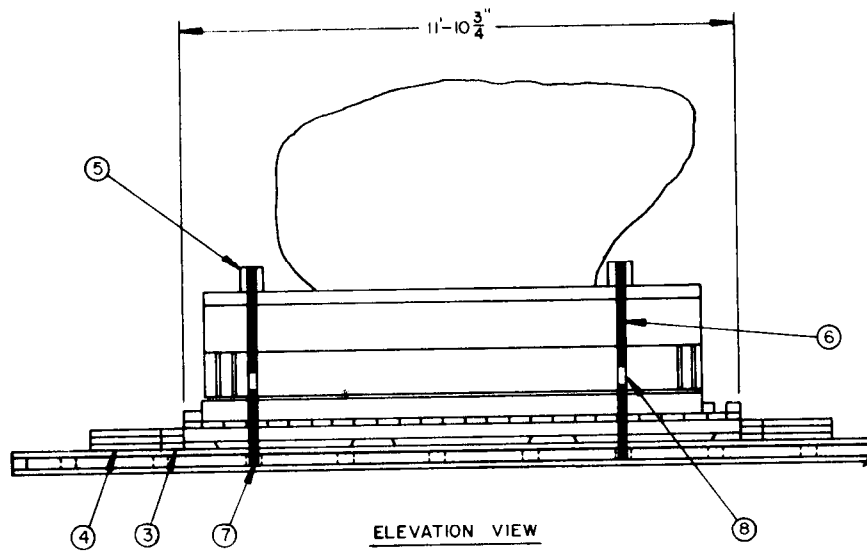
KEY NUMBERS

- ① SIDE BLOCKING/FILLER PIECE, 2" X 8" X 10'-0" (2 REQD). PRE-POSITION SO AS TO BEAR AGAINST SKID OF LADING BASE AND NAIL TO THE TRAILER FLOOR W/1-12D NAIL EVERY 12". SEE GENERAL NOTE "M" ON PAGE 2.
- ② SIDE BLOCKING/FILLER PIECE, 4" X 8" X 10'-0" (2 REQD). PRE-POSITION ON TOP OF AND NAIL TO PIECE MARKED ① W/1-40D NAIL EVERY 12".
- ③ HEADER, 2" X 6" X 7'-6" (TRIPLED) (2 REQD). NAIL THE FIRST PIECE TO THE TRAILER FLOOR W/1-12D NAIL EVERY 8". NAIL EACH ADDITIONAL PIECE W/1-20D NAIL EVERY 8".
- ④ BACK-UP CLEAT, 2" X 6" X 24" (TRIPLED) (4 REQD). POSITION 3" FROM THE END OF PIECE MARKED ③ AND NAIL THE FIRST PIECE TO THE TRAILER FLOOR W/6-12D NAILS. NAIL EACH ADDITIONAL PIECE W/6-20D NAILS.
- ⑤ STRAPPING BOARD, 6" X 6" X 8'-0" (2 REQD).
- ⑥ HOLD-DOWN STRAP, 2" X .050" X 26'-0" STEEL STRAPPING (2 REQD). INSTALL EACH STRAP FROM ONE (1) PIECE OF STRAPPING: ANCHOR IT TO THE ANCHORING FACILITY ON ONE SIDE OF THE TRAILER, RUN IT OVER PIECE MARKED ⑤, PASS IT THROUGH THE ANCHORING FACILITY ON THE OPPOSITE SIDE OF THE TRAILER, AND BRING IT BACK UP ABOVE THE TRAILER FLOOR WHERE IT CAN BE TENSIONED AND SEALED. SEE SPECIAL NOTE 1 AND SPECIAL PROVISIONS ON PAGE 5 AND GENERAL NOTE "G" ON PAGE 2.
- ⑦ PAD, 2" X .050" STEEL STRAPPING 18" LONG (4 REQD). POSITION UNDER ANCHORING FACILITY AND SEAL TO A HOLD-DOWN STRAP. SEE "DETAIL A" ON PAGE 2. ALT: STAKE POCKET PROTECTOR (8 REQD). USE TWO (2) UNDER EACH ANCHORING FACILITY WITH A HOLD-DOWN STRAP. SEE "DETAIL B" ON PAGE 2.
- ⑧ SEAL FOR 2" STRAPPING (8 REQD, 4 PER STRAP). DOUBLE-CRIMP EACH SEAL EXCEPT THOSE USED TO SECURE THE PADS.

CAUTION  
8'-8"



END VIEW

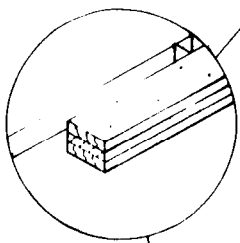


BILL OF MATERIAL		
LUMBER	LINEAR FEET	BOARD FEET
2" X 6"	69	69
2" X 8"	20	27
4" X 8"	20	54
6" X 6"	16	48
NAILS	NO. REQD	POUNDS
12d (3-1/4")	66	1-1/4
20d (4")	92	3-1/2
40d (5")	20	1-1/4
STEEL STRAPPING, 2" X .050"	58' REQD	20 LBS
SEAL FOR 2" STRAPPING	8 REQD	2 LBS
STAPLE FOR 2" STRAPPING	8 REQD	NIL

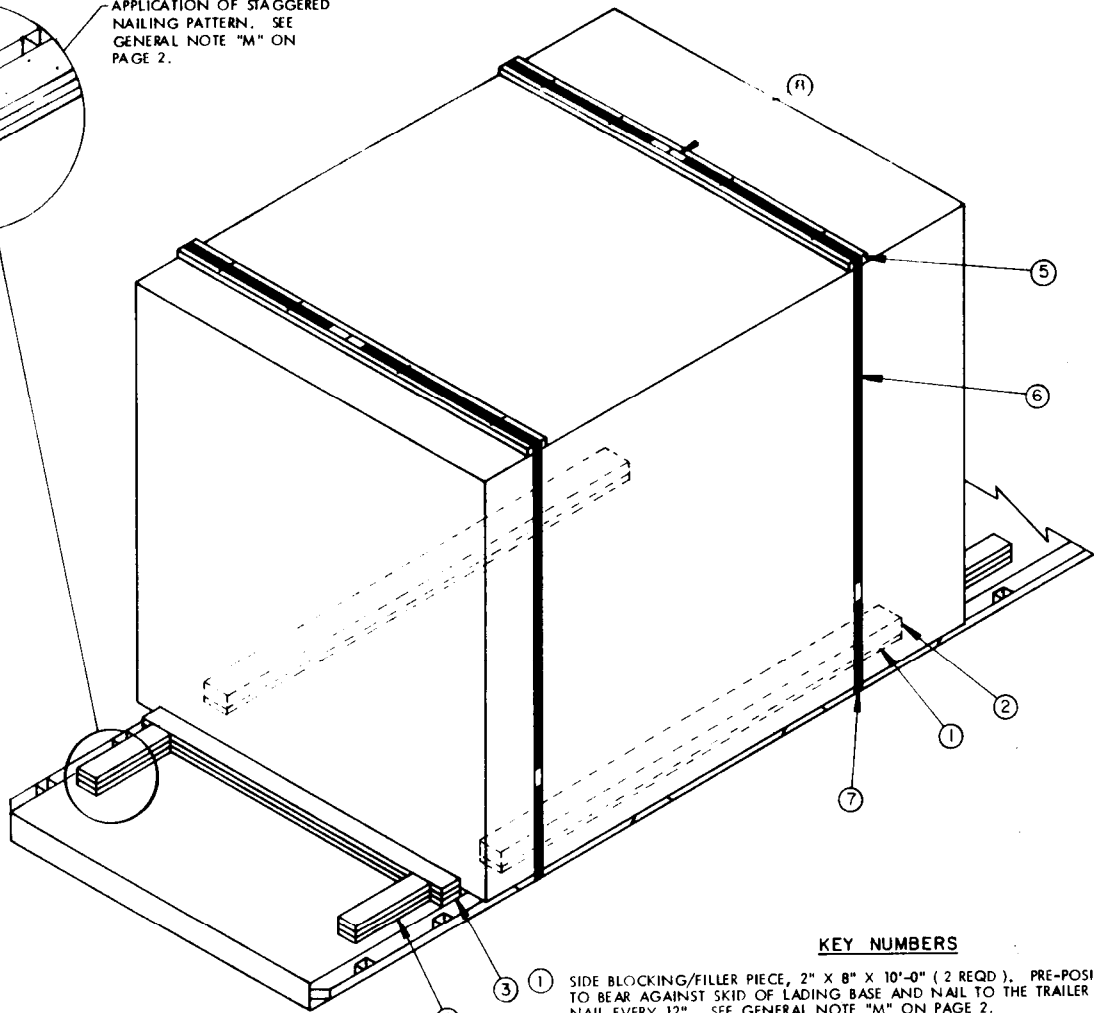
LOAD AS SHOWN

ITEM	QUANTITY	WEIGHT ( APPROX )
INTERCEPT AERIAL		
ON SKID BASE	1	10,924 LBS
DUNNAGE		424 LBS
TOTAL WEIGHT		11,348 LBS

UNCRATED - MOUNTED ON SKID BASE



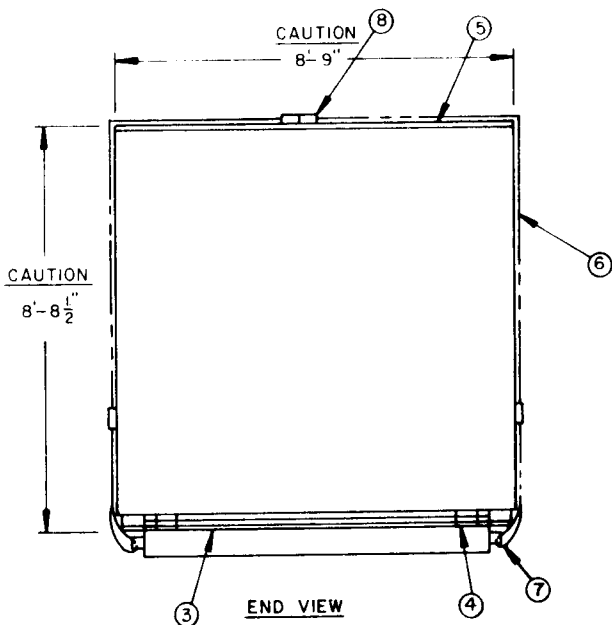
APPLICATION OF STAGGERED NAILING PATTERN. SEE GENERAL NOTE "M" ON PAGE 2.



ISOMETRIC VIEW

**KEY NUMBERS**

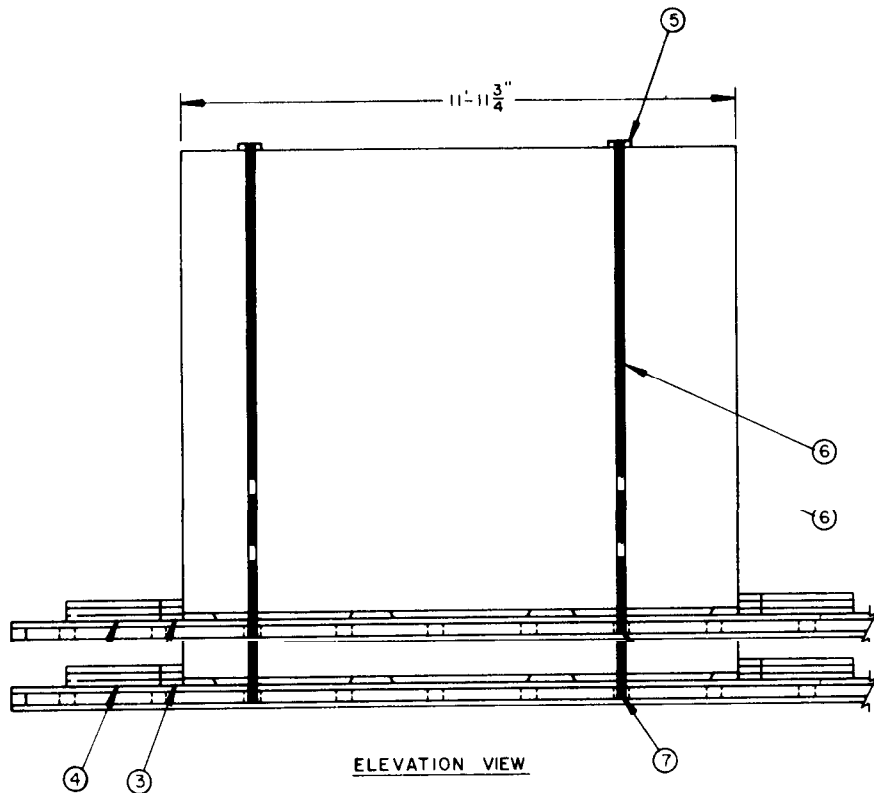
- ① SIDE BLOCKING/FILLER PIECE, 2" X 8" X 10'-0" ( 2 REQD ). PRE-POSITION SO AS TO BEAR AGAINST SKID OF LADING BASE AND NAIL TO THE TRAILER FLOOR W/1-12D NAIL EVERY 12". SEE GENERAL NOTE "M" ON PAGE 2.
- ② SIDE BLOCKING/FILLER PIECE, 4" X 8" X 10'-0" ( 2 REQD ). PRE-POSITION ON TOP OF AND NAIL TO PIECE MARKED ① W/1-40D NAIL EVERY 12".
- ③ HEADER, 2" X 6" X 7'-6" ( TRIPLED ) ( 2 REQD ). NAIL THE FIRST PIECE TO THE TRAILER FLOOR W/1-12D NAIL EVERY 8". NAIL EACH ADDITIONAL PIECE W/1-20D NAIL EVERY 8".
- ④ BACK-UP CLEAT, 2" X 6" X 30" ( TRIPLED ) ( 4 REQD ). POSITION 3" FROM THE END OF PIECE MARKED ③ AND NAIL THE FIRST PIECE TO THE TRAILER FLOOR W/8-12D NAILS. NAIL EACH ADDITIONAL PIECE W/8-20D NAILS.
- ④ BACK-UP CLEAT, 2" X 6" X 30" ( TRIPLED ) ( 4 REQD ). POSITION 3" FROM THE END OF PIECE MARKED ③ AND NAIL THE FIRST PIECE TO THE TRAILER FLOOR W/8-12D NAILS. NAIL EACH ADDITIONAL PIECE W/8-20D NAILS.
- ⑤ STRAPPING BOARD, 2" X 6" X CRATE WIDTH ( 2 REQD ).
- ⑥ HOLD-DOWN STRAP, 2" X .050" X 34'-0" STEEL STRAPPING ( 2 REQD ). INSTALL EACH STRAP FROM TWO ( 2 ) 17'-0" LONG PIECES. STAPLE TO PIECE MARKED ⑤ W/4-2" STAPLES. SEE SPECIAL PROVISIONS ON PAGE 9 AND GENERAL NOTE "G" ON PAGE 2.
- ⑦ PAD, 2" X .050" STEEL STRAPPING 18" LONG ( 4 REQD ). POSITION UNDER ANCHORING FACILITY AND SEAL TO A HOLD-DOWN STRAP. SEE "DETAIL A" ON PAGE 2. ALT: STAKE POCKET PROTECTOR ( 8 REQD ). USE TWO ( 2 ) UNDER EACH ANCHORING FACILITY WITH A HOLD-DOWN STRAP. SEE "DETAIL B" ON PAGE 2.
- ⑧ SEAL FOR 2" STRAPPING ( 12 REQD, 6 PER STRAP ). SEE GENERAL "F" ON PAGE 2.



END VIEW

**CRATED**





SPECIAL PROVISIONS FOR INTERCEPT AERIAL ( CRATED ) :

LADING MAY BE SECURED BY CARRIER-OWNED CHAINS AND LOAD BINDERS IN LIEU OF SPECIFIED HOLD-DOWN STRAPPING DUNNAGE MATERIALS, PROVIDING THE FOLLOWING CONDITIONS ARE MET:

1. ONLY CHAINS AND LOAD BINDERS OF GOOD QUALITY SHOULD BE USED. CAUTION: EXTREME CARE MUST BE USED IN TENSIONING CHAINS TO PREVENT DAMAGE TO THE CRATE.
2. IN LIEU OF EACH HOLD-DOWN STRAP MARKED (4), ONE (1) LINE OF 3/8" CHAIN OR TWO (2) LINES OF 1/4" CHAIN MAY BE USED. THE STRAPPING BOARD MARKED (5) MUST BE DOUBLED AND LAMINATED W/1-10d NAIL EVERY 12". EACH CHAIN SHALL BE SECURED TO LAMINATED BOARDS W/4-20d NAILS BY DRIVING EACH NAIL INTO THE BOARD THRU AN OPENING IN A CHAIN LINK AND BENDING IT OVER THE LINK.
3. IF DESIRED, CHAINS OF A LARGER SIZE THAN SPECIFIED ABOVE MAY BE USED.
4. BEFORE AND DURING INSTALLATION, THE CHAINS AND LOAD BINDERS SHALL BE INSPECTED FOR BENT HOOKS, STRETCH, GOUGES, BENT LINKS, WEAR AND ANY OTHER NOTICEABLE DEFECTS. ANY DEFICIENCY SHALL BE CAUSE FOR REJECTION OF A CHAIN OR LOAD BINDER.
5. CHAINS MUST NOT BE TWISTED DURING INSTALLATION.
6. THE TENSIONING DEVICE OF EACH LOAD BINDER MUST BE SAFETY-WIRE TIED TO PREVENT ACCIDENTAL OPENING OR LOOSENING IN TRANSIT.

BILL OF MATERIAL		
LUMBER	LINEAR FEET	BOARD FEET
2" X 6"	93	93
2" X 8"	20	27
4" X 8"	20	54
NAILS	NO. REQD	POUNDS
12d ( 3-1/4" )	74	1-1/4
20d ( 4" )	108	4
40d ( 5" )	20	1-1/4
STEEL STRAPPING, 2" X .050"	74 REQD	25 LBS
SEAL FOR 2" STRAPPING	12 REQD	3 LBS
STAPLE FOR 2" STRAPPING	8 REQD	NIL

LOAD AS SHOWN

ITEM	QUANTITY	WEIGHT ( APPROX )
INTERCEPT AERIAL ( CRATED )	1	12,270 LBS
DUNNAGE		383 LBS
<b>TOTAL WEIGHT</b>		<b>12,653 LBS</b>