

HAWK

LOADING, TIEDOWN, AND UNLOADING PROCEDURES FOR SHIPMENT OF MOBILE TEAM TRANSIT CASES, IN TACTICAL VEHICLES

NOTE:

PROCEDURES DEPICTED HEREIN SHOW TRANSIT CASES SEPARATED AND RETAINED IN THE CARGO BED OF 2½ AND 5 TON TRUCKS WITH THE USE OF WOOD DUNNAGE ASSEMBLIES AND/OR WEB STRAP TIE DOWN ASSEMBLIES.

THE SEPARATION OF THE CASES PERMITS EASY REMOVAL OF INDIVIDUAL CASES AND/OR PERMITS THE CASES TO BE OPENED WITHOUT REMOVAL FROM THE DUNNAGE ASSEMBLIES.

THE METHOD DEPICTED ON PAGE 3 SHOWS WOOD DUNNAGE MATERIAL RETAINING THE CASES.

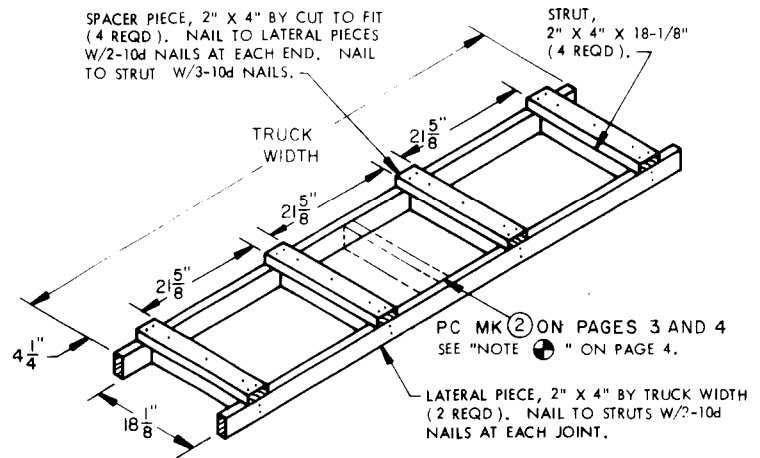
THE METHOD DEPICTED ON PAGE 4 SHOWS WOOD DUNNAGE MATERIAL AND WEB STRAP TIE DOWN ASSEMBLIES RETAINING THE CASES.

<small>DRAFTSMAN</small> <i>TRS/CBE</i>	<small>PROJ. ENG.</small> <i>GWP/AMM</i>	<small>ANALYST - SUPERVISOR</small> <i>R. Higgins</i>	<small>SUBMITTED</small> <i>W. H. Harding, Col.</i>	
<small>CHECKED</small> <i>NW</i>	<small>ARC. APPRO. CTR.</small> <i>John Boyd</i>	<small>ANALYST - SUPERVISOR</small> <i>EDL</i>	<small>COMMANDING OFFICER, SAVANNAH ARMY DEPOT</small>	
REVISIONS			<small>APPROVED</small> <i>James E. O'Connell</i>	
	/		<small>ARMY MISSILE COMMAND</small>	
	/		<small>APPROVED BY ORDER OF COMMANDING GENERAL, U. S. ARMY MATERIEL COMMAND</small>	
	/		<i>Paul Klamm</i>	
	/		U. S. ARMY MATERIEL COMMAND	
	/		12 MAY 1969	
			<small>CLASS</small>	<small>DIVISION</small>
			<small>DRAWING</small>	<small>FILE</small>
			19	48
			7559	GSE 17HA7

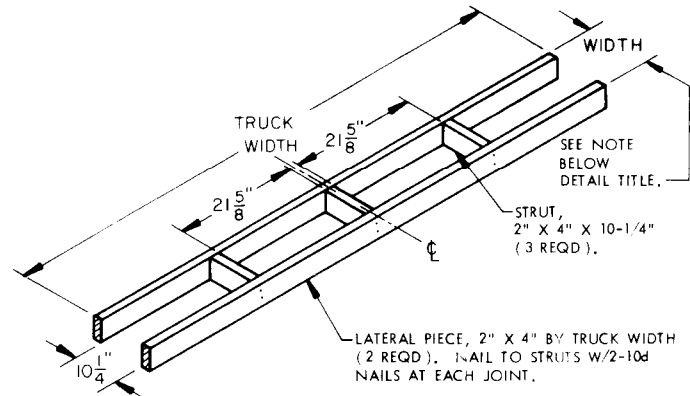
DO NOT SCALE

GENERAL NOTES

- A. THIS DOCUMENT HAS BEEN PREPARED AND ISSUED IN ACCORDANCE WITH AMCR 740-13.
- B. THIS DRAWING COVERS PROCEDURES APPLICABLE TO THE TRANSPORT OF THE MOBILE TEAM TRANSIT CASES FOR THE SELF PROPELLED HAWK SYSTEM IN TACTICAL TYPE VEHICLES. IF OTHER TYPES OF CARGO ITEMS ARE TRANSPORTED WITH THOSE SHOWN, A TOTAL LOAD MUST BE COMPATIBLE AND THE ADDED ITEMS MUST BE SECURED WITH WEB STRAPS OR DUNNAGE, AS REQUIRED TO PREVENT DISPLACEMENT DURING TRANSPORTATION.
- C. PAGE 4 PROCEDURES APPLY TO THE VEHICLES AS DESIGNATED HEREIN, MODIFIED TO INCLUDE THE UNIVERSALLY APPLICABLE "TIE DOWN KIT" WHICH CONSISTS OF THE TIE DOWN FITTINGS FOR INSTALLATION IN CARGO BEDS, AND WEB STRAP TIE DOWN ASSEMBLIES.
- D. WEB STRAP TIE DOWN ASSEMBLIES MUST BE SECURELY HOOKED INTO ANCHORING DEVICES ON THE TRANSPORTING VEHICLE, AND FIRMLY TENSIONED. EXERCISE CARE DURING STRAP APPLICATION; AVOID TWIST IN STRAPS, INSURE STRAIGHT LAY OF STRAP ON THE TAKE-UP SPOOL OF RATCHET WHEN TENSIONING, AND TIE BACK THE LOOSE END OF A STRAP AFTER TENSIONING IS COMPLETED. A TENSIONED STRAP MUST FORM AT LEAST ONE COMPLETE WRAP ON THE TAKE-UP SPOOL OF THE TENSIONING RATCHET.
- E. ADJUSTABLE SCUFF SLEEVES PROVIDED ON WEB STRAP ASSEMBLIES WILL BE LOCATED TO PROVIDE A PAD WHERE STRAPS PASS OVER SHARP EDGES OF CASES. METAL PARTS OF STRAP ASSEMBLY SHOULD BE LOCATED SO AS TO AVOID CONTACT WITH CASES.
- F. LOADING OF CASES COVERED HEREIN IS LIMITED TO ONE (1) LAYER IN HEIGHT SO THAT EACH CASE MAY BE OPENED OR REMOVED WITHOUT REMOVAL OF OTHER CASES.
- G. DETAILS OF MOBILE TEAM TRANSIT CASE:
 - CASE DIMENSIONS ---- 18" LONG X 21-1/2" WIDE X 23" HIGH.
 - GROSS WEIGHT ----- 100 LBS (APPROX).
- H. IT IS POSSIBLE THAT THE TRANSIT CASES BEING USED WILL BE A DIFFERENT SIZE THAN SHOWN HEREIN. IF SO, THE PROCEDURES SPECIFIED HEREIN CAN BE USED, PROVIDING THE WOOD DUNNAGE ASSEMBLIES ARE ADJUSTED TO FIT THE CASES INVOLVED. THE DELINEATED FABRICATING PRINCIPLES MUST BE RETAINED FOR THE "ADJUSTED" ASSEMBLIES.
- J. ONLY THE CARGO BODIES OF THE TACTICAL VEHICLES HAVE BEEN SHOWN HEREIN, TO PREVENT THE DISTRACTION FROM THE DELINEATED LOADING AND TIEDOWN PROCEDURES, AND ARE SHOWN IN OUTLINE FORM WITH STRUCTURAL PORTIONS OMITTED AS NECESSARY TO IMPROVE CLARITY OF THE DEPICTED PROCEDURES.
- K. FOURTEEN-UNIT LOADS ARE SHOWN HEREIN, HOWEVER, LOAD QUANTITIES CAN BE ADJUSTED TO SUIT THE NUMBER OF CASES TO BE MOVED. ADJUST THE QUANTITIES OF "SPACER" AND/OR "FILLER" AND/OR "REAR BLOCKING" OR "STRAP" ASSEMBLIES AS REQUIRED TO SUIT THE LOAD QUANTITY BEING LOADED.
- L. THE DESIGNATED LADING ITEMS MAY BE MANUALLY LOADED AND UN-LOADED FROM THE TRANSPORTING VEHICLE.

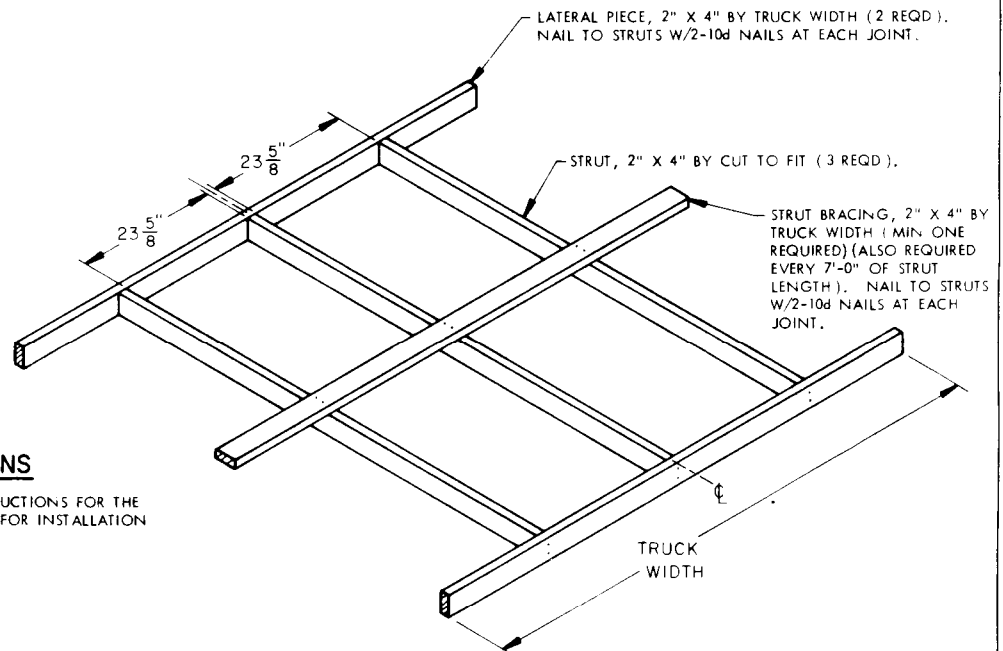


SPACER ASSEMBLY DETAIL



FILLER DETAIL

THE WIDTH OF THE FILLER ASSEMBLY MAY BE ADJUSTED TO PROVIDE PROPER WEB STRAP TIE DOWN APPLICATION OVER THE CENTER OF THE CASES. SEE "NOTE ②" ON PAGE 4.

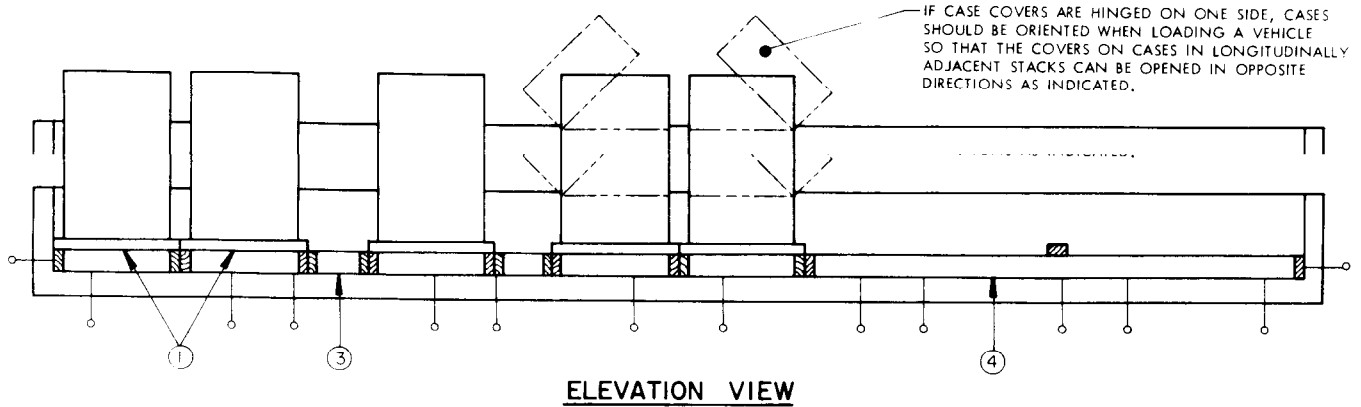
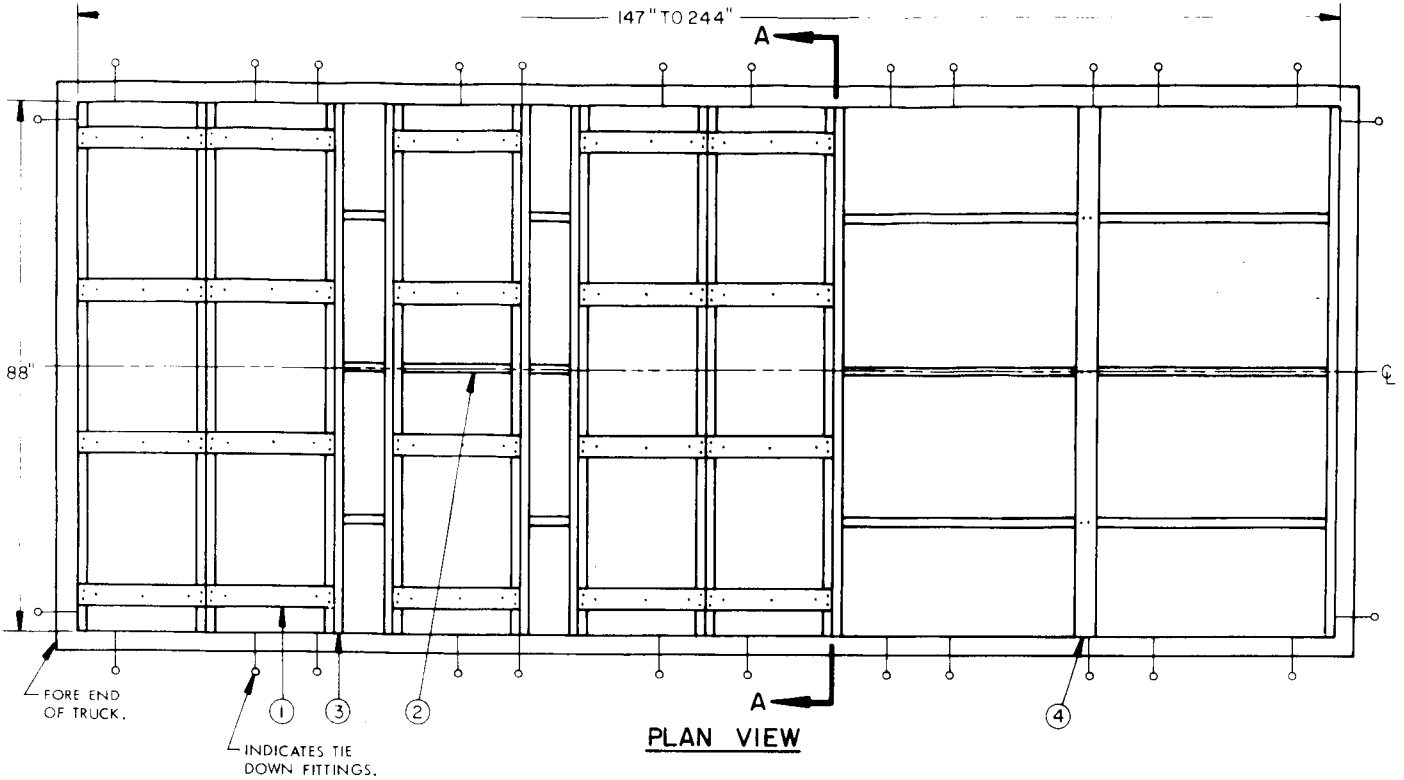


REAR BLOCKING DETAIL

MATERIAL SPECIFICATIONS

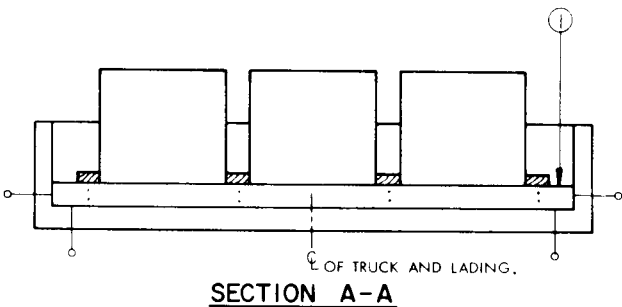
REFER TO TB 9-2300-280-30 FOR REQUISITIONING INSTRUCTIONS FOR THE TIEDOWN FITTINGS AND WEB STRAP ASSEMBLIES, AND FOR INSTALLATION GUIDANCE FOR THE FITTINGS.

COMMERCIAL GRADE LUMBER AND NAILS.



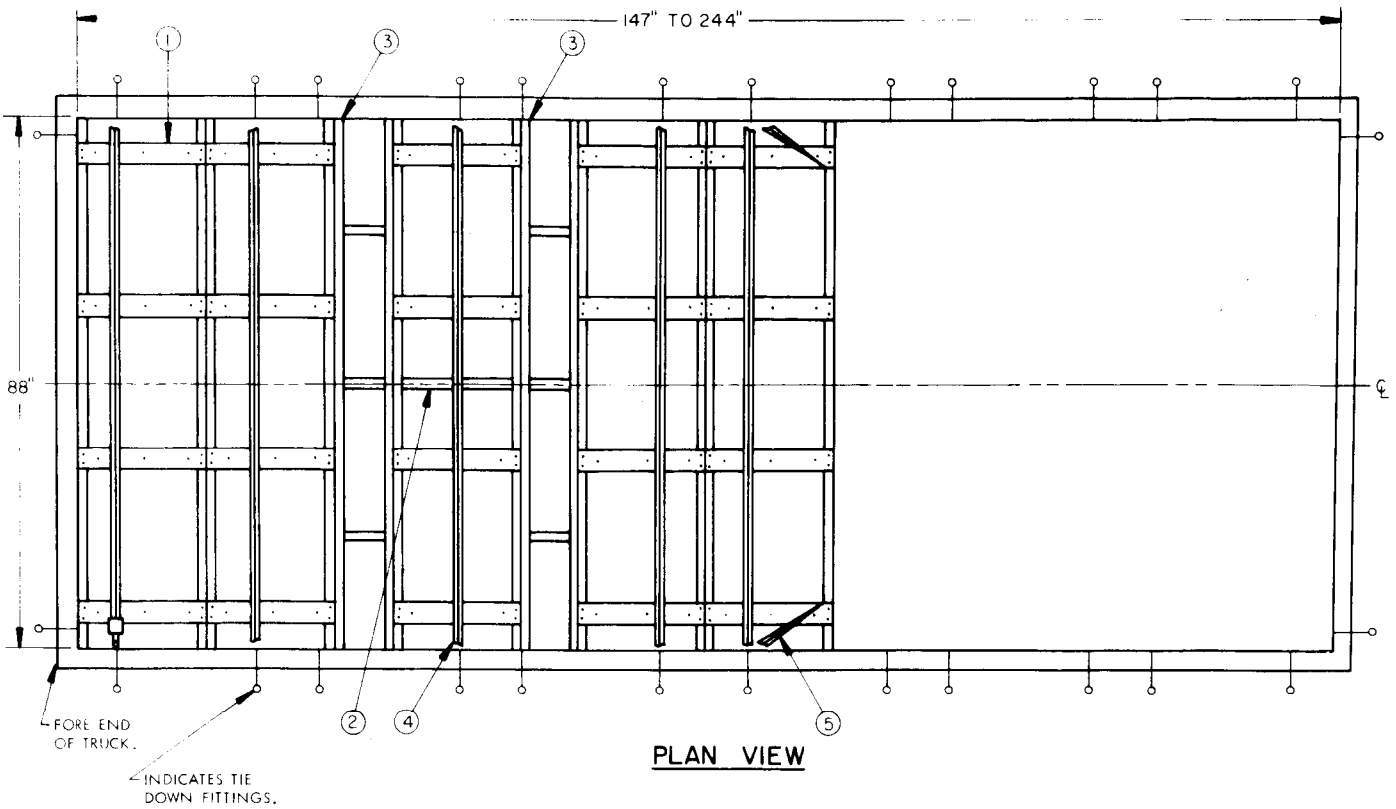
KEY NUMBERS

- ① SPACER ASSEMBLY (5 REQD). SEE DETAIL ON PAGE 2. NAIL TO AN ADJACENT SPACER ASSEMBLY OR A FILLER ASSEMBLY W/1-10d NAIL AT EACH END FROM EACH SIDE.
- ② STRUT FOR AN OMITTED-ITEM, 2" X 4" X 18-1/8" (1 REQD). NAIL THRU SPACER ASSEMBLY INTO STRUT W/2-10d NAILS AT EACH END. SEE "NOTE" ON PAGE 4.
- ③ FILLER ASSEMBLY (2 REQD). SEE DETAIL ON PAGE 2.
- ④ REAR BLOCKING (1 REQD). SEE DETAIL ON PAGE 2. NAIL FORWARD LATERAL PIECE TO ADJACENT "SPACER ASSEMBLY" W/2-10d NAILS AT EACH END.



LOAD AS SHOWN

ITEM	QUANTITY	WEIGHT (APPROX)
TRANSIT CASE	14	1,400 LBS

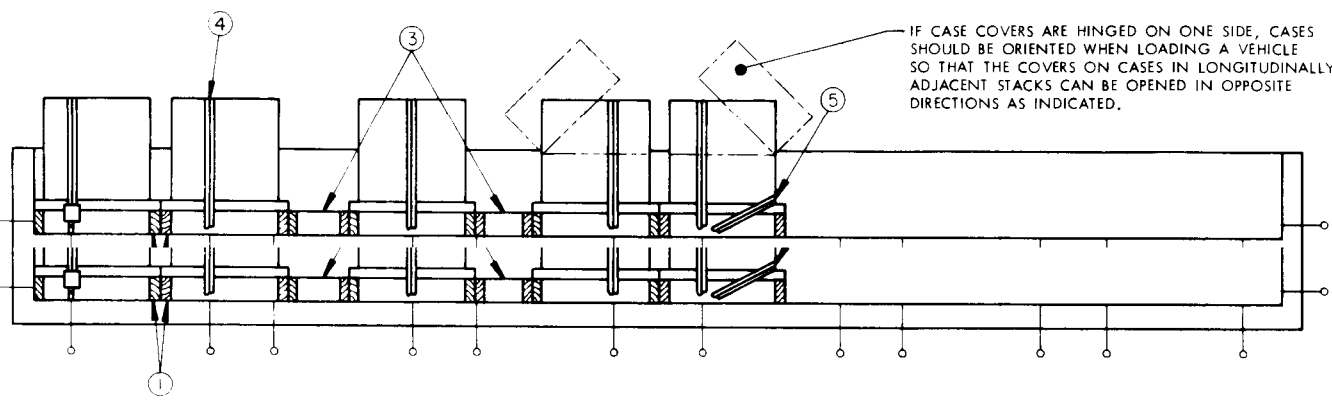


PLAN VIEW

INDICATES TIE DOWN FITTINGS.

FORE END OF TRUCK.

IF CASE COVERS ARE HINGED ON ONE SIDE, CASES SHOULD BE ORIENTED WHEN LOADING A VEHICLE SO THAT THE COVERS ON CASES IN LONGITUDINALLY ADJACENT STACKS CAN BE OPENED IN OPPOSITE DIRECTIONS AS INDICATED.



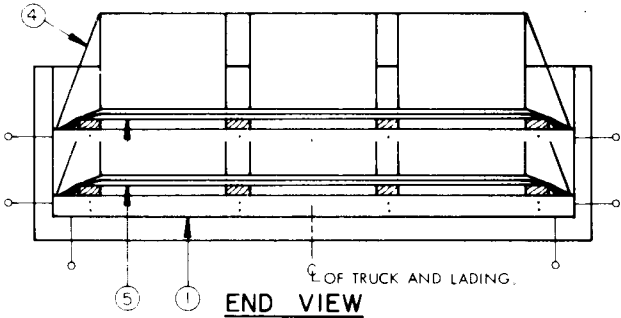
ELEVATION VIEW

NOTE

FOR A FOURTEEN-UNIT LOAD AS SHOWN, POSITION STRUT IN THE CENTER SPACE OF THE SPACER ASSEMBLY. FOR A THIRTEEN-UNIT LOAD, POSITION STRUTS IN THE TWO OUTWARD SPACES OF THE SPACER ASSEMBLY. FOR OTHER QUANTITIES AND/OR FOR TRUCKS WITH TIE DOWN FITTINGS LOCATED OTHER THAN SHOWN HEREIN, ADJUST THE QUANTITIES REQUIRED AND/OR THE WIDTH OF THE FILLER ASSEMBLY(IES) AS REQUIRED TO INSURE PROPER WEB STRAP TIE DOWN APPLICATION OVER THE CENTER AREA OF THE CASES, AS INDICATED WITHIN THE LOAD VIEWS ABOVE.

KEY NUMBERS

- ① SPACER ASSEMBLY (5 REQD). SEE DETAIL ON PAGE 2. NAIL TO AN ADJACENT SPACER OR FILLER ASSEMBLY W/1-10d NAIL AT EACH END FROM EACH SIDE.
- ② STRUT FOR AN OMITTED ITEM, 2" X 4" X 18-1/8" (1 REQD). NAIL THRU SPACER ASSEMBLY INTO STRUT W/2-10d NAILS AT EACH END. SEE "NOTE" AT LEFT.
- ③ FILLER ASSEMBLY (2 REQD). SEE DETAIL ON PAGE 2.
- ④ WEB STRAP TIE DOWN ASSEMBLY (5 REQD). INSTALL FROM A TIE DOWN FITTING ON ONE SIDE OF TRUCK, OVER THE TRANSIT CASES, TO TIE DOWN ON OTHER SIDE OF TRUCK.
- ⑤ WEB STRAP TIE DOWN ASSEMBLY (1 REQD). INSTALL FROM A TIE DOWN FITTING ON ONE SIDE OF TRUCK, OVER THE REAR SPACER ASSEMBLY, TO TIE DOWN FITTING ON OTHER SIDE OF TRUCK.
- ⑥ WEB STRAP TIE DOWN ASSEMBLY (1 REQD). INSTALL FROM A TIE DOWN FITTING ON ONE SIDE OF TRUCK, OVER THE REAR SPACER ASSEMBLY, TO TIE DOWN FITTING ON OTHER SIDE OF TRUCK.



END VIEW

LOAD AS SHOWN

ITEM	QUANTITY	WEIGHT (APPROX)
TRANSIT CASE	14	1,400 LBS