

HAWK

LOADING AND BRACING ON FLAT BED OR "LOW-BOY" TRAILER OF PULSE ACQUISITION RADAR SET, AN/MPQ-35 AND/OR AN/MPQ-50, TRAILER MOUNTED

● FOR TRAILERS EQUIPPED WITH A PNEUMATIC (AIR RIDE) SUSPENSION SYSTEM, SEE THE "ADDITIONAL SPECIAL PROVISIONS" ON PAGE 5.

THIS DRAWING, INCLUDING REVISION NO. 2, SUPERSEDES DRAWING 19-48-7404-GSE11HA16, DATED 12 JULY 1960, INCLUDING REVISION NO. 1 THERETO, DATED JUNE 1971.

DO NOT SCALE

REVISIONS				DRAFTSMAN	PROJ. ENG.
2	FEB 79	<i>JH</i>	<i>Wm J. Goguen</i>	BB / DAK	RWS / GTS
		<i>RM</i>	<i>John L. Byrd</i>	CHECKER	LOG ENGR. / MINT
				RSM	<i>BA Adell</i>
				APPROVED, U.S. ARMY MISSILE MATERIEL READINESS COMMAND	
				<i>William J. Goguen</i>	
				APPROVED BY ORDER OF COMMANDING GENERAL, U.S. ARMY MATERIEL DEVELOPMENT AND READINESS COMMAND (DARCOM)	
				<i>John L. Byrd</i>	
				U.S. ARMY DEFENSE AMMUNITION CENTER AND SCHOOL	
				U. S. ARMY DARCOM DRAWING	
				FEBRUARY 1979	
				CLASS	DIVISION
				19	48
				DRAWING	FILE
				7404	GSE 11HA16

GENERAL NOTES

- A. THIS DOCUMENT HAS BEEN PREPARED AND ISSUED IN ACCORDANCE WITH AMCR 740-13.
- B. THE LOAD AS SHOWN IS BASED ON A FLAT BED OR "LOW-BODY" TRAILER 8'-0" WIDE WITH A WOOD OR A WOOD AND METAL FLOOR. ONLY ONE UNIT OF LADING IS SHOWN; HOWEVER, MULTIPLES OF UNITS, AS SHOWN OR DISSIMILAR IN NATURE, MAY BE LOADED ON A TRAILER. THE NUMBER OF UNITS TO BE LOADED ON A TRAILER WILL BE DEPENDENT ON THE SIZE OF THE TRAILER USED OR THE QUANTITIES OF UNITS TO BE SHIPPED, WITH THE VIEW OF FULL UTILIZATION OF CARRIER EQUIPMENT.
- C. ONLY TRAILERS CAPABLE OF SAFELY TRANSPORTING THE LADING TO DESTINATION WITHOUT DAMAGE WILL BE SELECTED. TRAILERS SELECTED MUST HAVE "SOUND" FLOORS WHICH PROVIDE NAIL RETENTION PROPERTIES EQUAL TO OR BETTER THAN SPECIFIED DUNNAGE LUMBER, AND A SUFFICIENT NUMBER OF TIE DOWN FACILITIES OF A STRENGTH EQUAL TO OR BETTER THAN SPECIFIED LADING TIE DOWN ASSEMBLIES.
- D. SHIPMENT GROSS WEIGHT, AXLE DISTRIBUTION OF LADING WEIGHT AND OVERALL DIMENSIONS MUST MEET STATE LAW REQUIREMENTS.
- E. LADING DATA:

RADAR SET, TRAILER MOUNTED -----	16'-4-1/2" LONG BY 8'-1-1/2" WIDE BY 7'-8" HIGH.
GROSS WEIGHT -----	7,581 POUNDS (APPROX.).
1. CRATE, ANTENNA REFLECTOR (RIGHT) -	6'-0-5/8" LONG BY 63-5/8" WIDE BY 70-1/2" HIGH.
GROSS WEIGHT -----	714 POUNDS (APPROX.).
2. CRATE, ANTENNA REFLECTOR (LEFT) --	6'-0-5/8" LONG BY 63-5/8" WIDE BY 70-1/2" HIGH.
GROSS WEIGHT -----	823 POUNDS (APPROX.).
3. CRATE, ANTENNA REFLECTOR (CENTER) -	6'-2" LONG BY 37" WIDE BY 6'-1-5/8" HIGH.
GROSS WEIGHT -----	415 POUNDS (APPROX.).
4. CRATE, ANTENNA SUPPORT -----	9'-8" LONG BY 52" WIDE BY 47-1/4" HIGH.
GROSS WEIGHT -----	400 POUNDS (APPROX.).
5. CRATE, PALLET JACKS -----	50-1/2" LONG BY 32" WIDE BY 22-1/4" HIGH.
GROSS WEIGHT -----	391 POUNDS (APPROX.).
6. BOX, CABLE REEL -----	22-3/4" LONG BY 21" WIDE BY 11" HIGH.
GROSS WEIGHT -----	56 POUNDS (APPROX.).

- F. REFER TO ORD DWG 19-48-C-ORDJU-588, "WIRE ROPE AND ANNEALED WIRE APPLICATION METHODS FOR SECURING LADING ON RAIL & MOTOR CARRIER EQUIP", FOR PROPER TIE DOWN APPLICATION, EXCEPT THAT NUTS ON 3/8" CABLE CLIPS WILL BE TIGHTENED TO A TORQUE OF 35 TO 40 FOOT POUNDS. CAUTION: DURING WIRE ROPE INSTALLATION, AVOID CONTACT WITH ALL ELECTRICAL WIRING, VEHICLE CONTROLS AND OTHER APPURTENANCES. METAL FILLERS OR COMPARABLE CUSHIONING MATERIAL MUST BE USED BETWEEN TIE DOWN WIRES AND/OR CABLES AND ALL SHARP EDGES, AND ANTI-CHAFING MATERIAL MUST BE USED BETWEEN CONTACTING TIE DOWN WIRES AND LADING TIRES. ADDITIONALLY, LADING TIRES WILL BE INFLATED TO HIGHWAY OPERATING PRESSURE, AND ALL HAND BRAKES MUST BE "SET" WITH HAND LEVERS WIRE-TIED OR BLOCKED.
- G. SEE THE "SPECIAL PROVISIONS" AT RIGHT AND ON PAGE 5 FOR SPECIFICATIONS WHICH MUST BE APPLIED IF CHAINS AND LOAD BINDERS ARE USED.
- H. WIRE ROPE CABLE MUST BE TENSIONED SUFFICIENTLY TO CAUSE SLIGHT VEHICLE BODY DEPRESSION. TENSIONING CAN BE ACCOMPLISHED BY EMPLOYING TWO (2) CABLE GRIPPERS AND AN APPLICABLY SIZED "COME-A-LONG" TYPE MECHANICAL HOIST.
- J. CAUTION: IT IS RECOMMENDED THAT CABLE TIE DOWNS BE INSTALLED TO APPROXIMATE THE ANGLE SHOWN; HOWEVER, IF PLACEMENT OF TRANSPORTER TIE DOWN FACILITIES PREVENTS THIS, CARE MUST BE EXERCISED TO ENSURE THAT CABLE TIE DOWNS ON THE SAME SIDE OF THE LADING ARE INSTALLED SO THEIR RETENTION FORCES ACT IN OPPOSITE LONGITUDINAL DIRECTIONS.

(CONTINUED AT RIGHT)

MATERIAL SPECIFICATIONS

LUMBER -----	: DOUGLAS FIR OR COMPARABLE LUMBER WITH STRAIGHT GRAIN AND FREE FROM MATERIAL DEFECTS. REF: FED SPEC MM-L-751.
NAILS -----	: COMMON. REF: FED SPEC FF-N-105.
WIRE -----	: ANNEALED, BLACK. REF: FED SPEC QQ-W-461.
ROPE -----	: STEEL WIRE, PLAIN, PREFORMED, REGULAR LAY, 6.56 TONS, 6 X 19, FLEXIBLE IWRC, MACWHYTE WIRE ROPE CO. (OR EQUAL). REF: FED SPEC RR-W-410.
CLIP -----	: "U" BOLT, CROSBY, HEAVY DUTY (OR EQUAL). REF: FED SPEC FF-C-450, TYPE I, CLASS I.
STRAPPING, STEEL ---	: TYPE I, CLASS A, B, OR C. REF: FED SPEC QQ-S-781. (FOR FSN SEE SB-38-100).
STRAP SEAL; STRAP STAPLE; STAKE	
POCKET PROTECTOR	: COMMERCIAL GRADE.

GENERAL NOTES (CONTINUED FROM LEFT)

- K. DUNNAGE LUMBER SPECIFIED THROUGHOUT THIS PROCEDURAL DRAWING IS OF NOMINAL SIZE. FOR EXAMPLE, 2" X 4" MATERIAL IS ACTUALLY 1-1/2" THICK BY 3-1/2" WIDE AND 2" X 6" MATERIAL IS ACTUALLY 1-1/2" THICK BY 5-1/2" WIDE.
- L. NOTICE: A STAGGERED NAILING PATTERN WILL BE USED WHEN DUNNAGE IS NAILED TO THE FLOOR OF THE TRANSPORTING VEHICLE, OR WHEN LAMINATING DUNNAGE. ADDITIONALLY, THE NAILING PATTERN FOR AN UPPER PIECE OF LAMINATED DUNNAGE WILL BE ADJUSTED AS REQUIRED SO THAT A NAIL FOR THAT PIECE WILL NOT BE DRIVEN THROUGH INTO OR RIGHT BESIDE A NAIL IN A LOWER PIECE.
- M. WHEN ANY STRAP IS SEALED AT AN END-OVER-END LAP JOINT, A MINIMUM OF TWO (2) SEALS, BUTTED TOGETHER, WITH TWO (2) PAIR OF CRIMPS PER SEAL MUST BE USED TO SEAL THE JOINT.
- N. IF EDGE PROTECTORS FOR 2" STRAPPING ARE NOT COMMERCIALY AVAILABLE, THEY MAY BE FORMED FROM 387 MIN. GAGE SHEET STEEL 9" LONG BY 6" WIDE.

SPECIAL PROVISIONS (SEE CONDITION NO. 10 BELOW)

LADING MAY BE SECURED BY CARRIER-OWNED CHAINS AND LOAD BINDERS IN LIEU OF SPECIFIED WIRE ROPE CABLE AND/OR HOLD-DOWN STRAPPING DUNNAGE MATERIALS, PROVIDING THE FOLLOWING CONDITIONS ARE MET:

- ONLY CHAINS AND LOAD BINDERS OF GOOD QUALITY SHOULD BE USED. CAUTION: EXTREME CARE MUST BE USED IN TENSIONING CHAINS TO PREVENT DAMAGE TO THE ACCESSORY ITEMS OR DEFORMATION OF THE RADAR TRAILER TIE DOWN DEVICES.
- ONE (1) LINE OF 3/8" CHAIN OR TWO (2) LINES OF 1/4" CHAIN MAY BE SUBSTITUTED FOR EACH WIRE ROPE CABLE MARKED (13). CHAINS SHALL BE INSTALLED AT THE SAME LOCATIONS SHOWN FOR WIRE ROPE CABLES AND IN THE SAME MANNER AS DIRECTED IN GENERAL NOTE "J".
- IN LIEU OF THE STRANDED WIRE TIE DOWNS MARKED (12), TWO (2) LINES OF 1/4" CHAIN MAY BE SUBSTITUTED FOR SECURING THE LADING LUNETTE.
- FOR WHEEL SECUREMENT, IN LIEU OF TWO (2) STRANDED WIRE TIE DOWNS MARKED (11), ONE (1) LINE OF 1/4" CHAIN MAY BE USED. TO PREVENT DAMAGE TO THE LIGHTENING HOLES AND WHEELS OF THE LADING, AND TO FACILITATE THE APPLICATION OF CHAINS AND LOAD BINDERS, A CHAIN MAY BE INSTALLED FROM A FORWARD TIE DOWN FACILITY AT THE SIDE OF THE TRANSPORTER, PASSED BEHIND THE WHEEL AND OVER THE AXLE OF THE LADING, AND THEN TO A REARWARD TIE DOWN FACILITY ON THE SAME SIDE OF THE TRANSPORTER.
- ONE (1) LINE OF 1/4" CHAIN MAY BE SUBSTITUTED FOR EACH HOLD-DOWN STRAP MARKED (18) AND (19). AT EACH CONTAINER EDGE WHERE EDGE PROTECTORS ARE USED, A CONTAINER-LENGTH "L" SHAPED CAP ASSEMBLY MUST BE USED UNDER THE CHAINS. FABRICATE THIS CAP BY NAILING A 2" X 2" PIECE TO THE SIDE OF A 2" X 4" PIECE. SECURE A CHAIN TO A CAP BY DRIVING A 20d NAIL INTO THE CAP THRU AN OPENING IN A CHAIN LINK AND BENDING IT OVER THE LINK. CAUTION: DO NOT DRIVE NAILS INTO CONTAINERS.
- IF DESIRED, CHAINS OF A LARGER SIZE THAN SPECIFIED ABOVE MAY BE USED.
- BEFORE AND DURING INSTALLATION, THE CHAINS AND LOAD BINDERS SHALL BE INSPECTED FOR BENT HOOKS, STRETCH, GOUGES, BENT LINKS, WEAR, AND ANY OTHER NOTICEABLE DEFECTS. ANY DEFICIENCY SHALL BE CAUSE FOR REJECTION OF A CHAIN OR LOAD BINDER. CHAINS MUST NOT BE TWINED DURING INSTALLATION.
- THE TENSIONING DEVICE OF EACH LOAD BINDER MUST BE SAFETY-WIRE TIED TO PREVENT ACCIDENTAL OPENING OR LOOSENING IN TRANSIT.
- ANTI-CHAFING MATERIAL MUST BE PLACED AND SECURED BETWEEN THE CHAINS AND THE RADAR TRAILER AT ALL POINTS OF CONTACT, EXCEPT AT DEFINITIVE TIE DOWN POINTS.
- FOR TRAILERS EQUIPPED WITH A PNEUMATIC (AIR RIDE) SUSPENSION SYSTEM, SEE THE "ADDITIONAL SPECIAL PROVISIONS" ON PAGE 5, WHICH WILL APPLY.

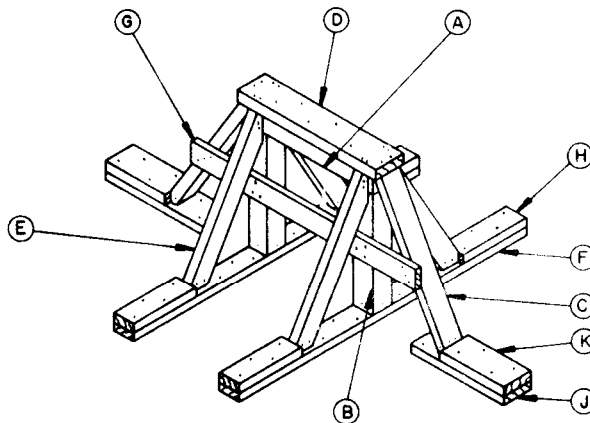
REVISIONS

REVISION NO. 1, DATED JUNE 1971, CONSISTS OF:

- CHANGES AS NECESSARY TO UPDATE DRAWING FORMAT.
- CHANGES AS NECESSARY TO UPDATE GENERAL NOTES.
- ADDITION OF "SPECIAL PROVISIONS" FOR THE USE OF CHAINS AND LOAD BINDERS.
- INCLUDING THE AN/MPQ-50 RADAR SET.

REVISION NO. 2, DATED FEBRUARY 1979, CONSISTS OF:

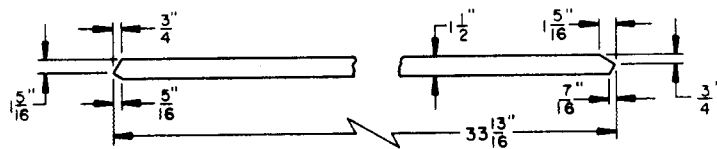
- CHANGES AS NECESSARY TO UPDATE DRAWING FORMAT.
- ADDITION OF "ADDITIONAL SPECIAL PROVISIONS" FOR THE USE OF CHAINS AND LOAD BINDERS.



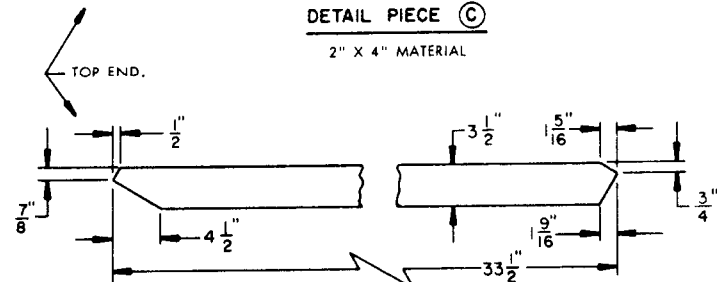
FORWARD BLOCKING

KEY LETTERS

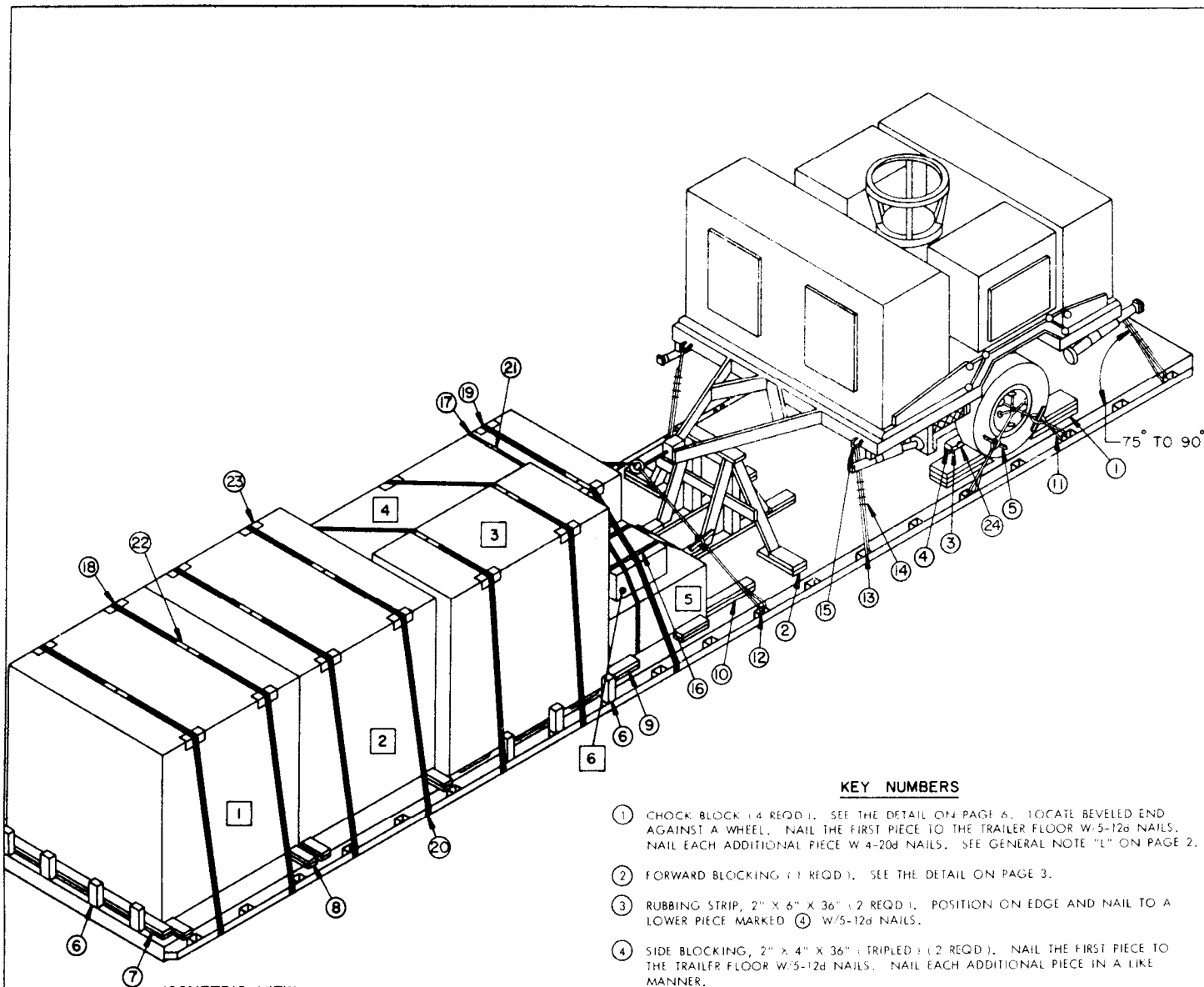
- (A) 4" X 4" X 24" (1 REQD.). POSITION ACROSS TOP OF PIECES MARKED (B).
- (B) 4" X 4" X 25-1/2" (2 REQD.). TOENAIL TO PIECES MARKED (A) AND (F) W/4-16d NAILS AT EACH END.
- (C) 2" X 4" X 33-13/16" (2 REQD.). DOUBLE BEVEL EACH END. SEE "DETAIL PIECE (C)" FOR BEVEL CUTS REQUIRED. TOENAIL TO PIECES MARKED (A) W/2-16d NAILS AND TO PIECE MARKED (J) W/4-16d NAILS AFTER PARTIAL ASSEMBLY (PIECES MARKED (A) THRU (C)) HAS BEEN LOCATED ON THE TRAILER AND PIECE MARKED (J) HAS BEEN NAILED TO THE TRAILER FLOOR.
- (D) 2" X 6" X 27" (1 REQD.). NAIL TO PIECE MARKED (A) W/5-12d NAILS AND TO PIECES MARKED (C) AND (E) W/2-12d NAILS EACH.
- (E) 2" X 4" X 33-1/2" (4 REQD.). DOUBLE BEVEL EACH END. SEE "DETAIL PIECE (E)" FOR BEVEL CUTS REQUIRED. TOENAIL TO PIECES MARKED (A) AND (F) W/4-16d NAILS AT EACH END.
- (F) 2" X 4" X 61-1/4" (2 REQD.). LOCATE PARTIAL ASSEMBLY (PIECES MARKED (A) THRU (C)) UNDER ITEM AND NAIL TO THE TRAILER FLOOR W/1-12d NAIL EVERY 8".
- (G) 2" X 4" X 42" (1 REQD.). NAIL TO PIECES MARKED (B) AND (C) W/3-12d NAILS AT EACH JOINT.
- (H) 2" X 4" X 12" (4 REQD.). POSITION AGAINST PIECE MARKED (E) AND NAIL TO PIECE MARKED (F) W/4-20d NAILS.
- (J) 2" X 6" X 18" (2 REQD.). NAIL TO THE TRAILER FLOOR W/5-12d NAILS.
- (K) 2" X 6" X 12" (2 REQD.). POSITION AGAINST PIECE MARKED (C) AND NAIL TO PIECE MARKED (J) W/4-20d NAILS.



DETAIL PIECE (C)
2" X 4" MATERIAL

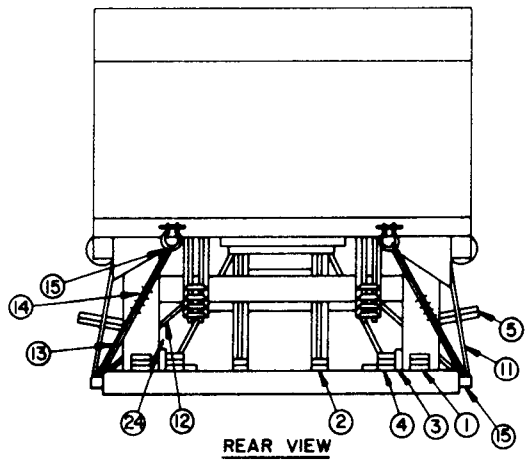


DETAIL PIECE (E)
2" X 4" MATERIAL



ISOMETRIC VIEW

THE NUMBERS SHOWN WITHIN THE SQUARES ON THE PACKAGES IDENTIFY THE ITEMS LISTED IN GENERAL NOTE "E" ON PAGE 2.

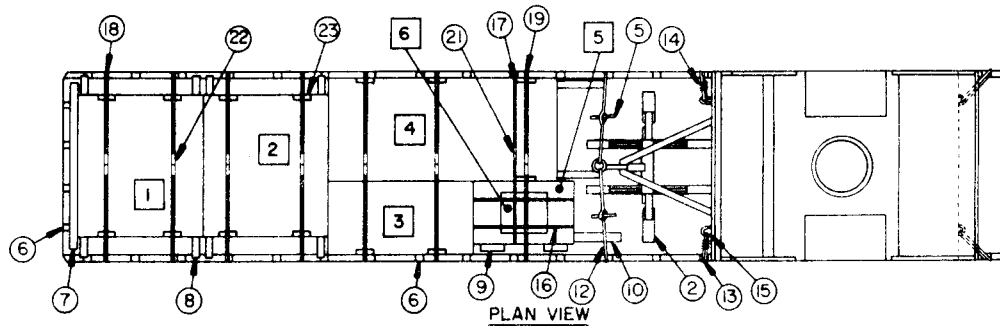


REAR VIEW

KEY NUMBERS

- ① CHOCK BLOCK (4 REQD.). SEE THE DETAIL ON PAGE 6. LOCATE BEVELED END AGAINST A WHEEL. NAIL THE FIRST PIECE TO THE TRAILER FLOOR W/5-12d NAILS. NAIL EACH ADDITIONAL PIECE W/4-20d NAILS. SEE GENERAL NOTE "E" ON PAGE 2.
- ② FORWARD BLOCKING (1 REQD.). SEE THE DETAIL ON PAGE 3.
- ③ RUBBING STRIP, 2" X 6" X 36" (2 REQD.). POSITION ON EDGE AND NAIL TO A LOWER PIECE MARKED ④ W/5-12d NAILS.
- ④ SIDE BLOCKING, 2" X 4" X 36" (TRIPLED) (2 REQD.). NAIL THE FIRST PIECE TO THE TRAILER FLOOR W/5-12d NAILS. NAIL EACH ADDITIONAL PIECE IN A LIKE MANNER.
- ⑤ WIRE TWISTER, 2" X 2" BY A LENGTH TO SUIT (6 REQD.). SEE GENERAL NOTE "F" ON PAGE 2.
- ⑥ STUB STAKE (10 REQD.). SIZE TO FIT STAKE POCKET. CUT TO EXTEND 9" ABOVE TRAILER FLOOR AND 3" BELOW STAKE POCKET. DRIVE ONE-12d NAIL INTO STAKE BELOW A STAKE POCKET ALLOWING APPROXIMATELY ONE INCH TO PROTRUDE.
- ⑦ HEADER, 2" X 4" X 7'-0" (DOUBLED) (1 REQD.). NAIL THE FIRST PIECE TO THE TRAILER FLOOR W/1-12d NAIL EVERY 8". NAIL THE SECOND PIECE TO THE FIRST W/1-20d NAIL EVERY 8".
- ⑧ SIDE BLOCKING, 2" X 4" X 10" (DOUBLED) (8 REQD.). ALIGN WITH CONTAINER SKID. NAIL THE FIRST PIECE TO THE TRAILER FLOOR W/3-12d NAILS. NAIL THE SECOND PIECE TO THE FIRST IN A LIKE MANNER.
- ⑨ SIDE BLOCKING, 2" X 4" X 12" (DOUBLED) (2 REQD.). ALIGN WITH CONTAINER SKID. NAIL THE FIRST PIECE TO THE TRAILER FLOOR W/3-12d NAILS. NAIL THE SECOND PIECE TO THE FIRST IN A LIKE MANNER.
- ⑩ BACK-UP CLEAT, 2" X 4" X 24" (DOUBLED) (3 REQD.). ALIGN WITH CONTAINER SKID. NAIL THE FIRST PIECE TO THE TRAILER FLOOR W/6-12d NAILS. NAIL THE SECOND PIECE TO THE FIRST W/6-20d NAILS.
- ⑪ EIGHT (8) STRANDS OF NO. 8 GAGE BLACK ANNEALED WIRE (4 REQD.). PASS THRU HOLES IN A WHEEL AND A TRANSPORTER TIE DOWN FACILITY TO FORM A COMPLETE LOOP. TWIST TAUT WITH PIECE MARKED ⑤. SEE GENERAL NOTE "F" ON PAGE 2, THE "WHEEL SECUREMENT" DETAIL ON PAGE 6, AND THE "SPECIAL PROVISIONS" ON PAGE 2 AND PAGE 5.
- ⑫ EIGHT (8) STRANDS OF NO. 8 GAGE BLACK ANNEALED WIRE (2 REQD.). PASS THRU LADING LUNETTE AND A TRANSPORTER TIE DOWN FACILITY TO FORM A COMPLETE LOOP. TWIST TAUT WITH PIECE MARKED ⑤. SEE GENERAL NOTE "F" ON PAGE 2 AND THE "SPECIAL PROVISIONS" ON PAGE 2 AND PAGE 5.
- ⑬ STEEL WIRE ROPE, 3/8" DIA, 6.56 TONS (4 REQD.). INSTALL CABLE TO APPROXIMATE THE ANGLE SHOWN AND TO FORM A COMPLETE LOOP FROM THE TIE DOWN FACILITY ON THE TRANSPORTER THRU THE LADING TIE DOWN DEVICE AND BACK TO THE TRANSPORTER TIE DOWN FACILITY. NOTE: CABLE OF A LARGER SIZE MAY BE USED. SEE "GENERAL NOTES "F", "H" AND "J" AND THE "SPECIAL PROVISIONS" ON PAGE 2 AND PAGE 5.

(CONTINUED ON PAGE 5)



(KEY NUMBERS CONTINUED FROM PAGE 4)

- 14 CLIP, SIZE 3/8" (24 REQD). FOUR (4) PER CABLE JOINT AND ONE (1) PER THIMBLE. SEE GENERAL NOTE "F" ON PAGE 2.
- 15 THIMBLE, STANDARD, SIZE 3/8" (8 REQD). USE ONE (1) PER TRANSPORTER TIE DOWN FACILITY AND ONE (1) PER LADING TIE DOWN DEVICE. SECURE TO WIRE ROPE MARKED 13 W/1-CLIP PER THIMBLE. A STANDARD THIMBLE, AS SPECIFIED, CAN BE SECURED TO A WIRE ROPE WITH A 3/8" CLIP. HOWEVER, IF DESIRED, OR IF THE THIMBLE BEING USED IS OF A TYPE WHICH CANNOT BE SECURED WITH A 3/8" CLIP, A 1/2" CLIP MAY BE USED. NOTE THAT AN "OPEN PATTERN" THIMBLE IS RECOMMENDED. SEE GENERAL NOTE "F" ON PAGE 2.
- 16 UNITIZING STRAP, 1-1/4" X .035" X 13'-0" LONG STEEL STRAPPING (2 REQD). SEE GENERAL NOTE "M" ON PAGE 2.
- 17 UNITIZING STRAP, 1-1/4" X .035" X 22'-0" LONG STEEL STRAPPING (1 REQD).
- 18 HOLD-DOWN STRAP, 2" X .050" X 27'-0" LONG STEEL STRAPPING (6 REQD). INSTALL EACH STRAP FROM TWO (2) 13'-6" LONG PIECES. SEE GENERAL NOTE "M" ON PAGE 2.
- 19 HOLD-DOWN STRAP, 2" X .050" X 23'-0" LONG STEEL STRAPPING (1 REQD). INSTALL FROM TWO (2) 11'-6" LONG PIECES.
- 20 PAD, 2" X .050" X 18" LONG STEEL STRAPPING (14 REQD). POSITION UNDER AND SEAL TO PIECES MARKED 18 AND 19. SEE "DETAIL A" ON PAGE 6. ALTERNATIVE: STAKE POCKET PROTECTOR (28 REQD). USE TWO (2) UNDER EACH TIE DOWN FACILITY WITH PIECES MARKED 18 AND 19. SEE "DETAIL B" ON PAGE 6.
- 21 SEAL FOR 1-1/4" STRAPPING (6 REQD, 2 PER STRAP).
- 22 SEAL FOR 2" STRAPPING (42 REQD, 6 PER STRAP).
- 23 EDGE PROTECTOR FOR 2" STRAPPING (14 REQD). SEE GENERAL NOTE "N" ON PAGE 2.
- 24 WATERPROOF PAPER OR BURLAP OF A SUFFICIENT SIZE TO POSITION UNDER AND EXTEND 2" ABOVE PIECE MARKED 3.

ADDITIONAL SPECIAL PROVISIONS:

FOR TRAILERS EQUIPPED WITH A PNEUMATIC (AIR RIDE) SUSPENSION SYSTEM, THE LADING MAY BE SECURED BY CARRIER-OWNED CHAINS AND LOAD BINDERS IN ACCORDANCE WITH NOTES 1, 6, 7, 8 AND 9 OF THE "SPECIAL PROVISIONS" ON PAGE 2, AND THE FOLLOWING CONDITIONS, WHICH WILL BE MET INSTEAD OF THOSE CONDITIONS SPECIFIED BY NOTES 2 THRU 5 ON PAGE 2:

1. IN LIEU OF THE TWO (2) STRANDED WIRE TIE DOWNS MARKED 12 ON PAGE 4, ONE (1) LINE OF 1/4" CHAIN MAY BE SUBSTITUTED FOR SECURING THE LADING LUNETTE. WHEN THE CHAIN IS INSTALLED IT SHALL BE THREADED TO ENCIRCLE ONE SIDE OF THE LUNETTE RING. THE ENDS OF THE CHAIN WILL BE SECURELY FASTENED AT OPPOSITE SIDES OF THE TRANSPORTER.
2. FOR WHEEL AND LADING SECUREMENT (ON ONE SIDE, IN LIEU OF THE TWO (2) STRANDED WIRE TIE DOWNS MARKED 11 ON PAGE 4 AND THE TWO (2) STEEL WIRE ROPE CABLES MARKED 13 ON PAGE 4, ONE (1) LINE OF 3/8" CHAIN MAY BE SUBSTITUTED. THE CHAIN MAY BE INSTALLED IN ONE OF THE FOLLOWING TWO WAYS. IT MAY RUN FROM A TRANSPORTER TIE DOWN FACILITY REAR OF THE LADING WHEEL, THRU A LIGHTENING HOLE WITHIN THE UPPER AND FORWARD PART OF THE LADING WHEEL, REARWARD AND BACK THRU AN ADJACENT LIGHTENING HOLE OF THE LADING WHEEL, AND FORWARD AND DOWN TO A TRANSPORTER TIE DOWN FACILITY IN FRONT OF THE LADING WHEEL. TO PREVENT DAMAGE TO THE LIGHTENING HOLES AND WHEELS OF THE LADING, A CHAIN MAY BE INSTALLED FROM A REARWARD TIE DOWN FACILITY AT THE SIDE OF THE TRANSPORTER, PASSED BEHIND THE LADING WHEEL AND OVER THE LADING AXLE, AND DOWN TO A FORWARD TIE DOWN FACILITY ON THE SAME SIDE OF THE TRANSPORTER.

BILL OF MATERIAL		
LUMBER	LINEAR FEET	BOARD FEET
2" X 2"	9	3
2" X 4"	112	75
2" X 6"	14	14
2" X 8"	17	23
4" X 4"	7	10
NAILS	NO. REQD	POUNDS
12d (3-1/4")	225	3-3/4
16d (3-1/2")	60	1-1/2
20d (4")	90	3-1/4
STEEL STRAPPING, 1-1/4" X .035" -----	48' REQD -----	7 LBS
STEEL STRAPPING, 2" X .050" -----	306' REQD -----	102 LBS
SEAL FOR 1-1/4" STRAPPING -----	6 REQD -----	NIL
SEAL FOR 2" STRAPPING -----	42 REQD -----	9 LBS
ROPE, STEEL WIRE, 3/8" DIA -----	48' REQD -----	12 LBS
CLIP, 3/8" -----	24 REQD -----	8 LBS
THIMBLE, STANDARD, 3/8" -----	8 REQD -----	2 LBS
WIRE, NO. 8 GAGE -----	200' REQD -----	19 LBS
EDGE PROTECTOR -----	14 REQD -----	3 LBS
WATERPROOF PAPER OR BURLAP -----	AS REQD -----	NIL
CLIP, 1/2" (ALT FOR 3/8") -----	8 REQD -----	4 LBS

LOAD AS SHOWN

ITEM	QUANTITY	WEIGHT (APPROX)
PULSE ACQUISITION RADAR SET -----	1 -----	7,581 LBS
ACCESSORY ITEMS -----	6 -----	2,799 LBS
DUNNAGE -----	-----	487 LBS
TOTAL WEIGHT -----		10,867 LBS